

## Assembly Instructions for 6,000lb GoHoist Unit

Step 1. Place two shoulder sections approximately 8 feet apart. Make sure that GoHoist decals are facing outwards.



Step 2. Insert two cross brace sections into the inside slots on shoulder sections, lining up pin holes and placing locking pins in both holes. Make sure both cross brace sections are similar, both male or female on the internal ends.



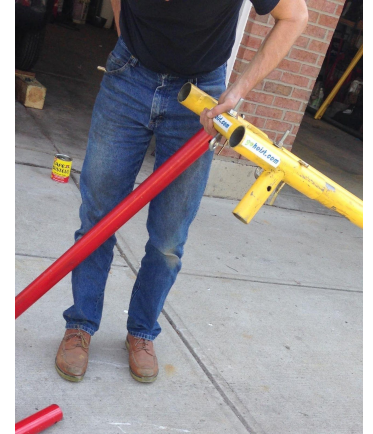
Step 3. Insert two more cross sections into the opposing shoulder section. These two sections will be either male or female internal and allow you to join sections in the middle, lining up the holes in inserting pins.



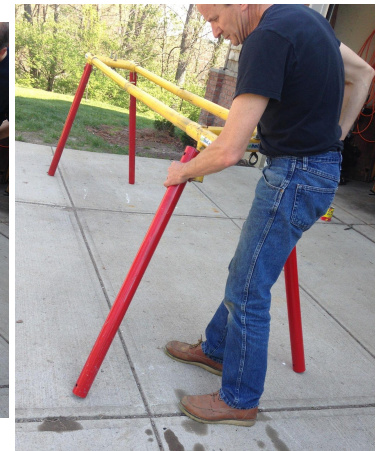
Insert locking pins with bend up, once in rotate down. To remove rotate bend up and pull out



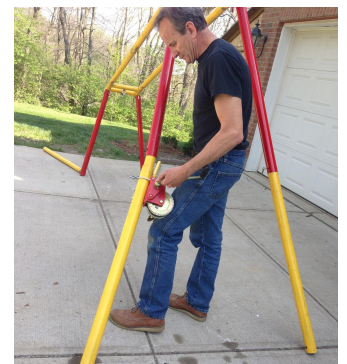
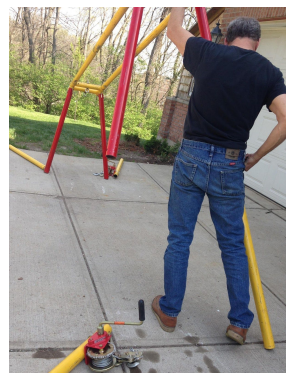
Step 4. Now lift one end of the cross brace assembly and insert the red top leg sections, lining up the pinholes and inserting pins.



Step 5. Insert the red top leg sections on the opposite side of the cross brace assembly.



Step 6. The middle leg sections are next. The left side section will have a winch, make sure the winch handle is facing out.

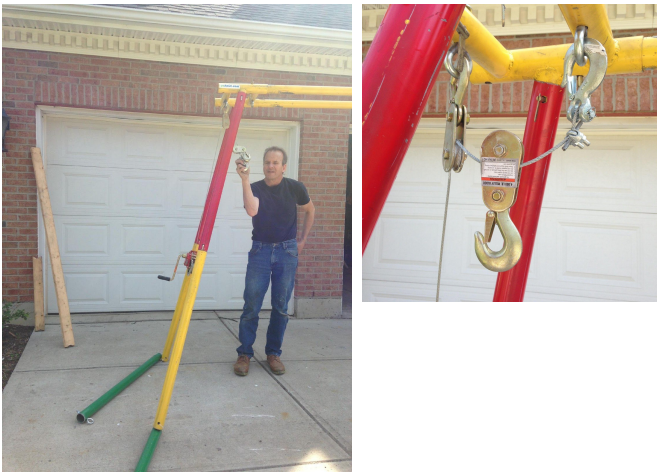




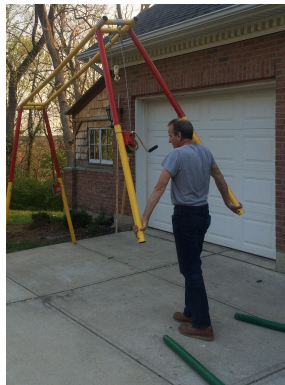
Step 7. Insert the middle way sections on the opposite side, once again the winch section going on the left with the handle facing out. Making sure you insert locking pins in each section.



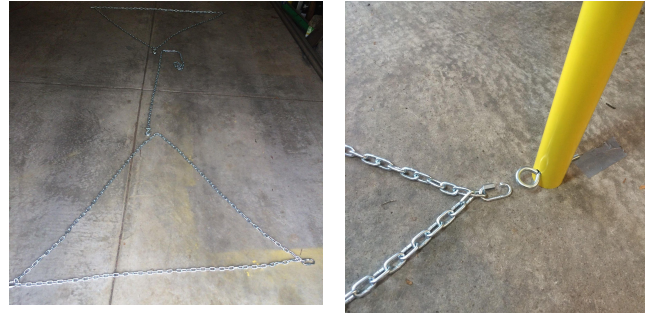
Step 8. Unwind the winch giving you slack on the snatch blocks and end hook. Attach the end hook onto the internal eyebolt on the shoulder, then attached the internal snatch block hook onto the external eyebolt on the shoulder unit. Do this for both winches on each end.



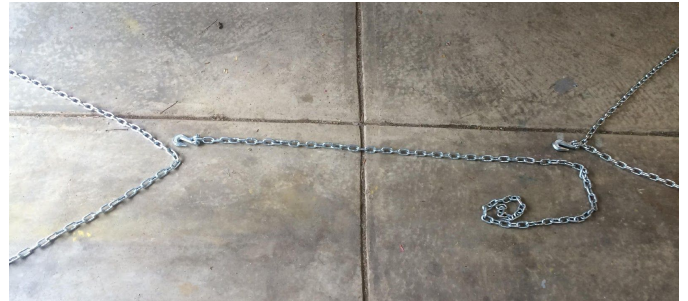
Step 9. Now insert the bottom leg segments making sure that the eyebolts on the bottom are facing inward so that tension chains can be attached. For this step two people are needed, one to hold the unit up, the other to insert the bottom leg segments.



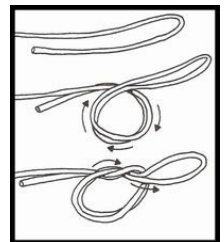
Step 10. The unit is now assembled and is ready to attach the tension chain between the four legs. The tension chain has three pieces. Two separate chain loops with two quick links that attached to the eyebolts on the bottom of the leg.



The two chain loops, now attached to the legs, pull the middle chain sections towards each other and attach the third chain segment, using the hook on one loop and hook on the middle chain as shown.



Step 11. Last step is to attach lifting strap to both winch hooks, with the straps under the boat hull. The lifting strap may need shortening to fit shallower hulls. Shorting the strap by adding a simple loop knot at one end of the strap and place the knotted loop end on the winch hook. Do not cut the lifting straps.



For newest GoHoist manuals and how-to videos go to [www.gohoist.com](http://www.gohoist.com)