

LED LINEAR LIGHT

With high quality components and a distinctive low profile housing, this linear light can be used as a pendant light or surface mounted. It delivers excellent performance in the most demanding commercial environments with a 200° beam angle and color temperatures ranging from 3000K-6000K. These linear lights can deliver optimal illumination in your garage, hospital, office building, school, or in a variety of other applications.



Features

- 200° Beam Angle
- Epistar Chip
- 5-Year Warranty
- L70 Rated: 50,000 Hours
- CCT: 3000K-6000K
- IP Rating: IP65
- Working Temperature: -20~+45°C

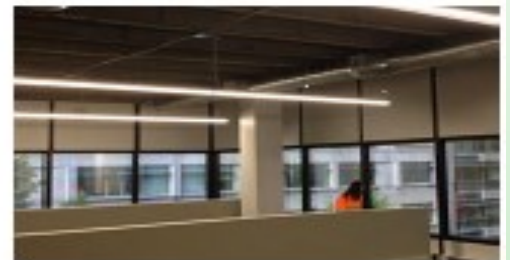


Specifications

Product Number	Watts	Length	Lumens	Beam Angle	Voltage	LED Chip	Dimensions	Rated Life	Certs
LC-LIN-20W-1030	20W	2'	2800LM	200°	AC100-277V	Epistar	23.62"x3.7"x2.7"	50,000 Hrs	UL/DLC
LC-LIN-30W-1031	30W	2'	4200LM	200°	AC100-277V	Epistar	23.62"x3.7"x2.7"	50,000 Hrs	UL/DLC
LC-LIN-40W-1032	40W	4'	5600LM	200°	AC100-277V	Epistar	47.24"x3.7"x2.7"	50,000 Hrs	UL/DLC
LC-LIN-50W-1033	50W	4'	7000LM	200°	AC100-277V	Epistar	47.24"x3.7"x2.7"	50,000 Hrs	UL/DLC
LC-LIN-50W-1034	50W	5'	7000LM	200°	AC100-277V	Epistar	59.06"x3.7"x2.7"	50,000 Hrs	UL/DLC
LC-LIN-60W-1035	60W	5'	8400LM	200°	AC100-277V	Epistar	59.06"x3.7"x2.7"	50,000 Hrs	UL/DLC

Applications

Offices, Educational, Business, Garages, Hospitals, and other Commercial buildings.



*Doing business by
The Golden Rule.*

FOURLEAF INDUSTRIES, LLC

Todd Smith

317-919-8560

Sales@Fourleafindustriesllc.com