

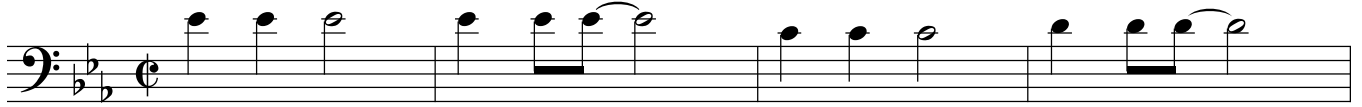
# SÃO PAULO

Baritone

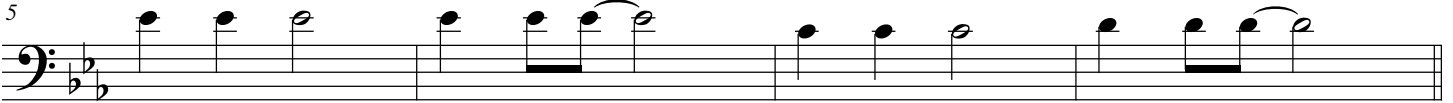
Brazilian March

Arthur Lemos

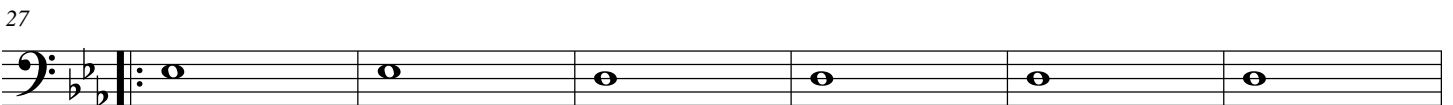
$\text{♩} = 128$



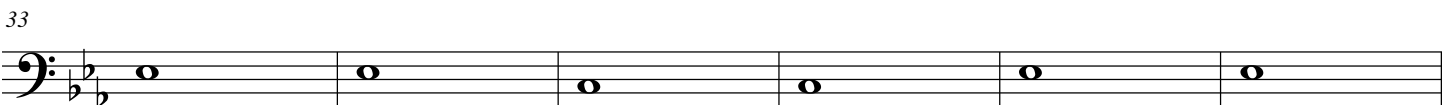
*ff*



*f*



*ff*



*f*

2 Baritone

SÃO PAULO

45 **Trio**

Musical staff for measures 45-50, featuring a bass clef, a key signature of two flats, and a 3/4 time signature. The melody consists of quarter and eighth notes.

Paul - o, São Paul - o, São Paul - o, Bra - sil. São Paul - o, São Paul - o, São

Musical staff for measures 51-56, continuing the melody from the previous system.

Paul - o, Bra - sil. São Paul - o, São Paul - o, São Paul - o, Bra - sil. São

Musical staff for measures 57-62, continuing the melody.

Paul - o, São Paul - o, São Paul - o, Bra - sil. São Paul - o, São Paul - o, São

Musical staff for measures 63-68, continuing the melody.

Paul - o, Bra - sil. São Paul - o, São Paul - o, São Paul - o, Bra - sil. São

Musical staff for measures 69-74, ending with a Coda symbol (⊕) and the text "To Coda".

Paul - o, São Paul - o, São Paul - o, Bra - sil. São Paul - o, São Paul - o, São

Musical staff for measures 75-82, featuring a double bar line and a dynamic marking of *ff*.

Paul - o, Bra - sil. *ff*

Musical staff for measures 83-90, consisting of a whole rest in each measure.

Musical staff for measures 91-96, starting with a Coda symbol (⊕) and the text "Coda", followed by a double bar line and a dynamic marking of *ff*.

*ff* D.S. al Coda

Fine