

# MEADOWVIEW

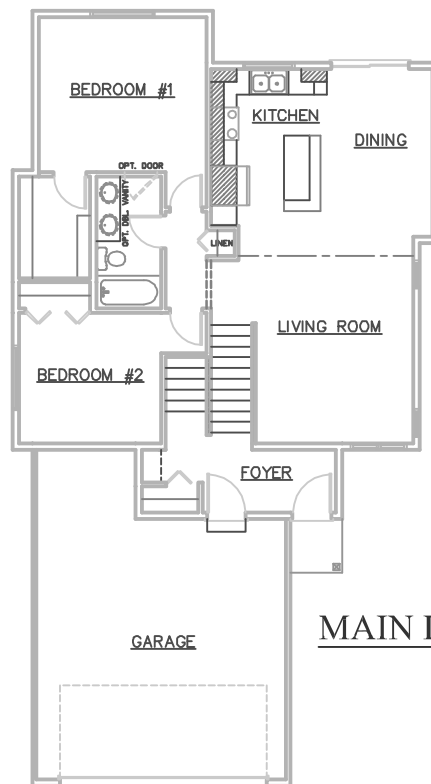
## 3475 ALDERWOOD DRIVE



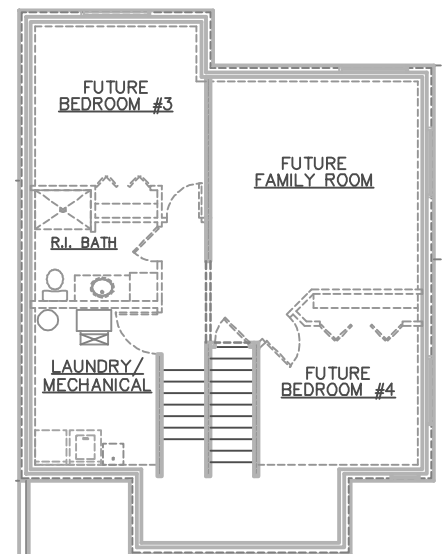
### ROOM SIZES

BEDROOM #1	13' X 12'
BEDROOM #2	11' X 10'-2"
LIVING ROOM	12' X 16'
DINING	8'-8" X 13'
KITCHEN	8'-6" X 13'
FUTURE FAMILY ROOM	15' X 15'/27'
FUTURE BEDROOM #3	12'-4" X 11'-6"
FUTURE BEDROOM #4	11'-6" X 10'

- \* 2-4 BEDROOMS, 1-2 BATHROOMS
- \* 1,094 - 1,770 SQUARE FEET
- \* OPEN FLOOR PLAN
- \* VAULTED CEILING
- \* WALK-IN-CLOSET
- \* COVERED ENTRY
- \* LARGE KITCHEN ISLAND



MAIN LEVEL



LOWER LEVEL



3475 Vermillion Street, Suite 101 ~ Hastings, MN 55033 ~ 651.437.3700 ~ [www.gregjhomes.com](http://www.gregjhomes.com)

Plans and specifications are subject to change without notice. Copyright Greg J Homes of Hastings Inc. 2025