

Competitive Credibility Data Program (CCDP)

VACBP OUTCOMES TRACKING PROJECT

Why CCDP?

- Started with October 2016 VACBP meeting
- The behavioral health delivery system is dramatically changing:
 - -From fee for service to Managed Care
 - -Credentialing of providers to join MCO network
- In order to survive and thrive in this new environment providers must show a commitment to quality and value!

Why CCDP?

- Is transformation of the system a threat or an opportunity?
 - If viewed as a threat we wait until change is imposed on us
 - If viewed as an opportunity we look for ways to be involved in process and system improvements

So We Need Data to Move Forward

- We started evaluating outcomes tracking software
- We worked with Magellan to help define outcomes to track and added agency performance metrics
- We selected ETO as our software provider to develop our reporting interface

Task 1



```
graph TD; Task1[Task 1] --> Task2[Task 2]; Task2 --> Task3[Task 3];
```

Task 2

Task 3

Building the CCDP

- Currently we have 18 providers involved in this project
- Each participating agency has named a project manager
- We are working together to create the system that will allow us to begin collecting agency and aggregated data



Task 1

A blue rounded rectangular box containing the text 'Task 1'. A white arrow points downwards from the bottom center of this box to the top center of the 'Task 2' box.



Task 2

A green rounded rectangular box containing the text 'Task 2'. A white arrow points downwards from the bottom center of this box to the top center of the 'Task 3' box.



Task 3

A red rounded rectangular box containing the text 'Task 3'.

Building the CCDP

- What consumer demographics will we track?
- The forms contain the fields that will become our database
- We will create reports to measure agency performance metrics, consumer outcomes, aggregated data
 - Reports can be customized for each payer

```
graph TD; A[Demographics] --> B[Forms]; B --> C[Reports];
```

Demographics

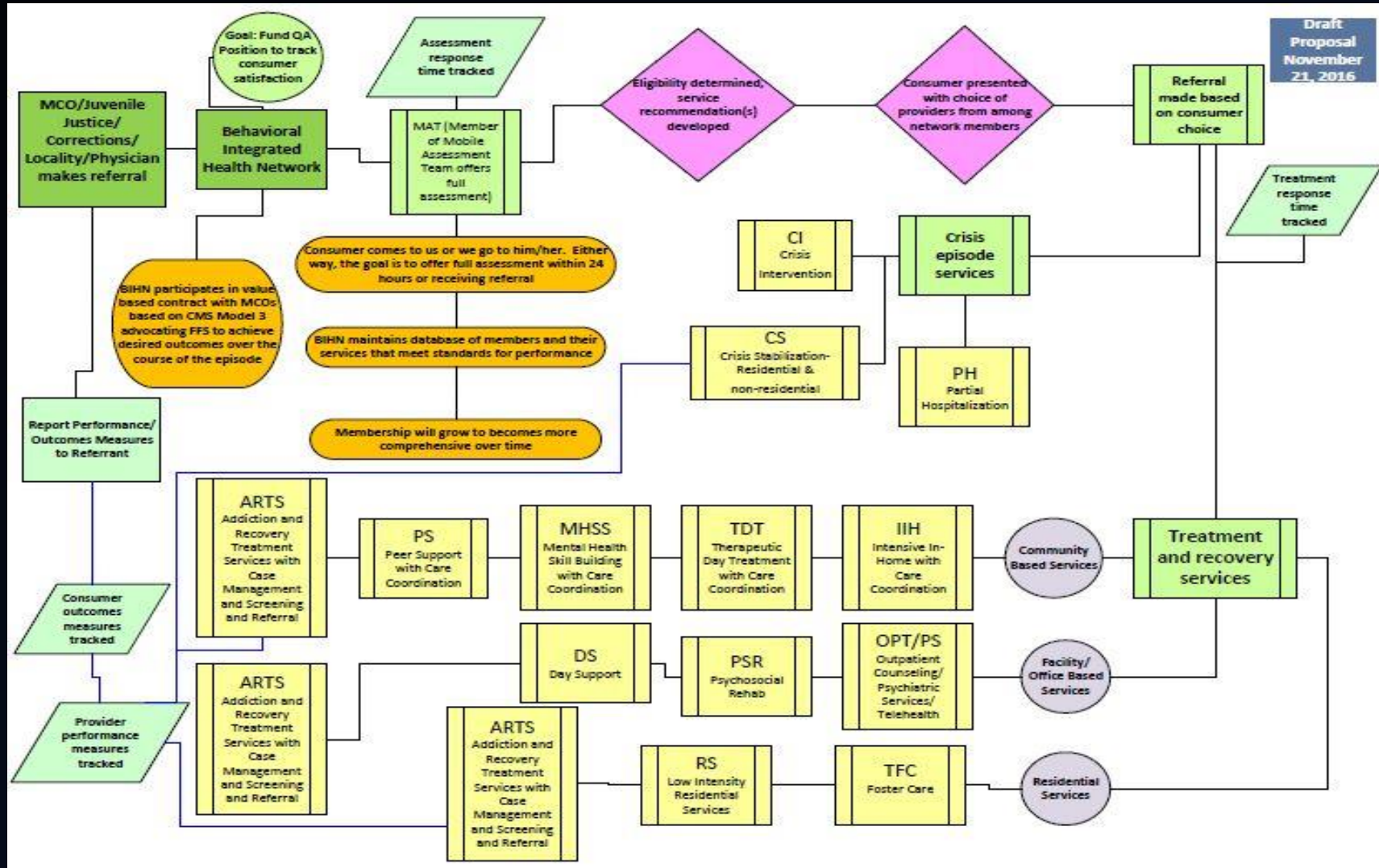
Forms

Reports

Where Do We Go From Here?

- We began talking about forming a Behavioral Integrated Health Network based on the following logic:
 - The state is seeking creative approaches to improved outcomes and methods for controlling costs.
 - If we have the best processes and the most comprehensive data sets, we have the opportunity to be a valued partner!
 - Beyond the CCDP we are looking at creation of an Integrated Behavioral Health Network

What Could a BIHN Look Like?



- Let's take a few minutes to discuss the demographics and our logic for the choices the project team has made.

DEMOGRAPHICS

We have completed the demographics discussion



WHAT ARE OUR GOALS?

Determine what changes are needed within each Provider's system to collect the data for project

- Launch CCDP website in January 2018
- Begin collecting data as Providers complete their system changes, train counselors and clinicians to enter the data
- Provider Reports-Agency data may need to be consumer specific
- VACBP Reports-All aggregated data will be de-identified



WHAT ARE OUR
GOALS?

Where do we go
from here?

- Standardized outcomes across MCOs?
- Possible electronic referral processes?
- Possible integrated consumer consent process?
- Possible integration between behavioral and medical outcomes tracking and reporting?



YOUR
THOUGHTS?