

AN 396 - Containerized DDC & Add'l 54" DDC

Container System

- 8' x 8' x 20' long container. 53,000 lb. load capacity
- 54' diameter, 12' 4" long, dual lock chamber. 6 ATA capable (Chamber pressure rating believed to be 100 psig, but not yet confirmed.)
- Chamber designed and built to ASME PVHO-1. Chamber built 1985
- Exterior lighting system
- HP compressor and very capable HP storage and SCUBA charging system
- Add'l info on General Arrangement Drawings provided separately
- Well maintained. Maintenance records available on request.

Separate Chamber

- 54' diameter, 12' 4" long, dual lock chamber, 100 psig rated
- Chamber designed and built to ASME PVHO-1. Built 1985 by Rowell Welding
- Exterior lighting system
- LP compressor (Quincy)
- Well maintained. Maintenance records available on request

SCBA Charging Station



Control Side of Chamber



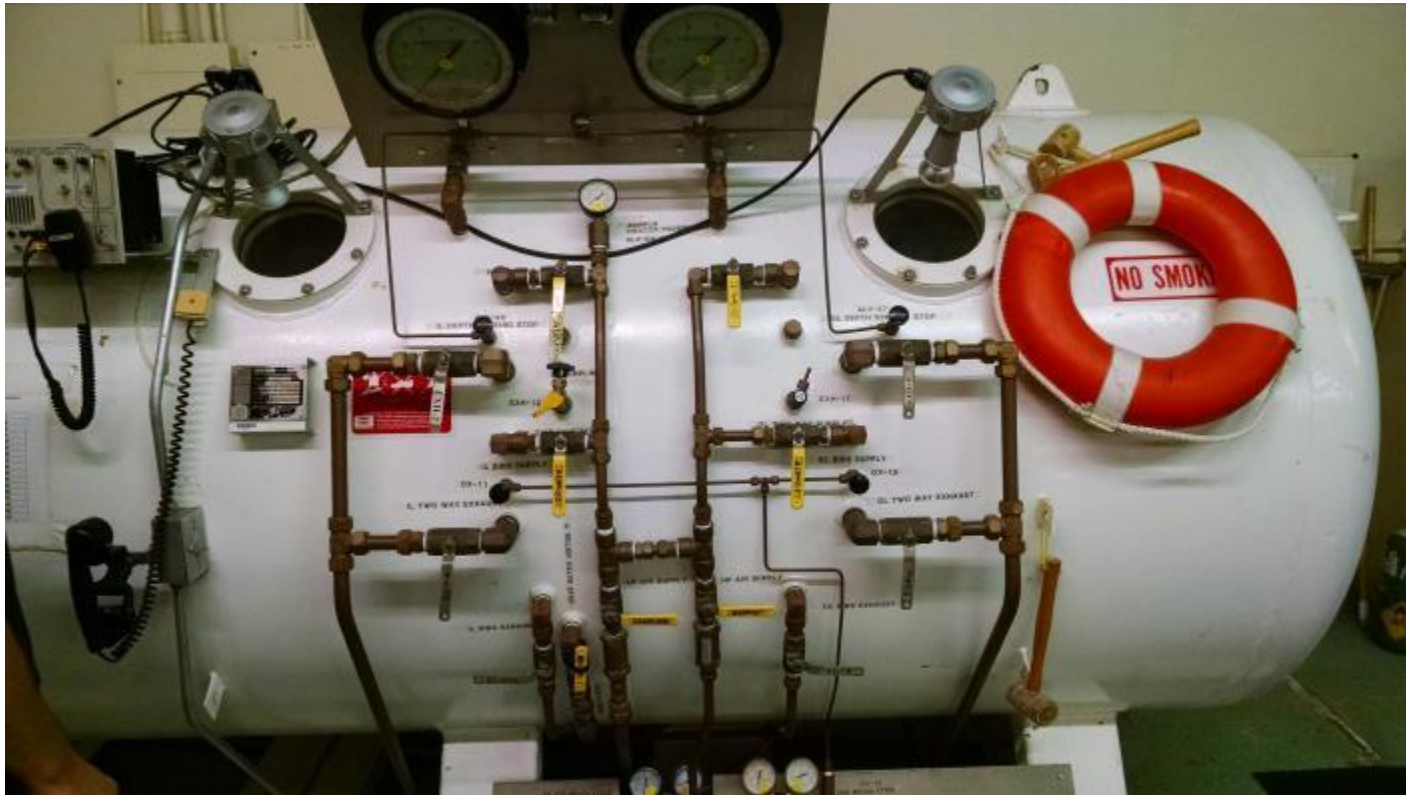
Main Chamber Entry



Chamber Interior (Container Chamber)



2nd Free Standing DDC Chamber in Container is Similar



Chamber Data Plates



← Data Plate on Free Standing DDC Built 1985 by Rowell Welding

Data Plate on DDC in Container, Built 1985 by Aqua-Air Industries, Inc. →



LP Air Compressor



LP Accumulator & Filtration Station



SCBA Charging Station



HP Air Storage and SCBA Charging Station



Misc. Items

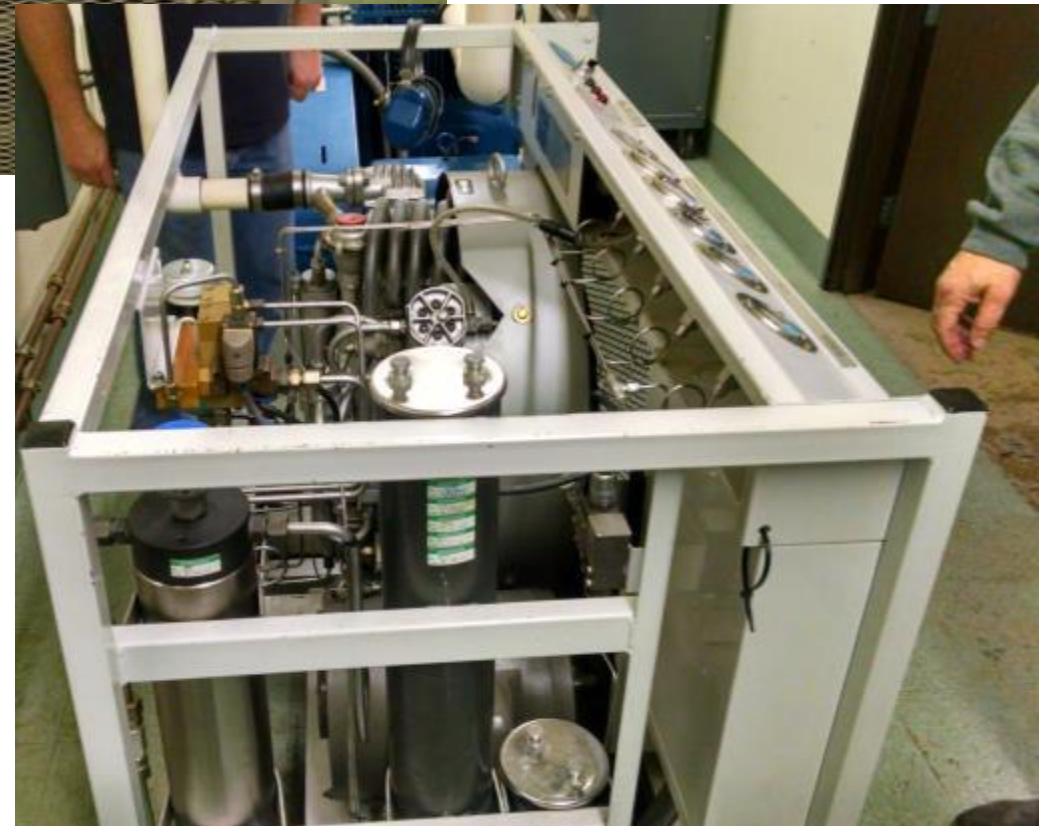
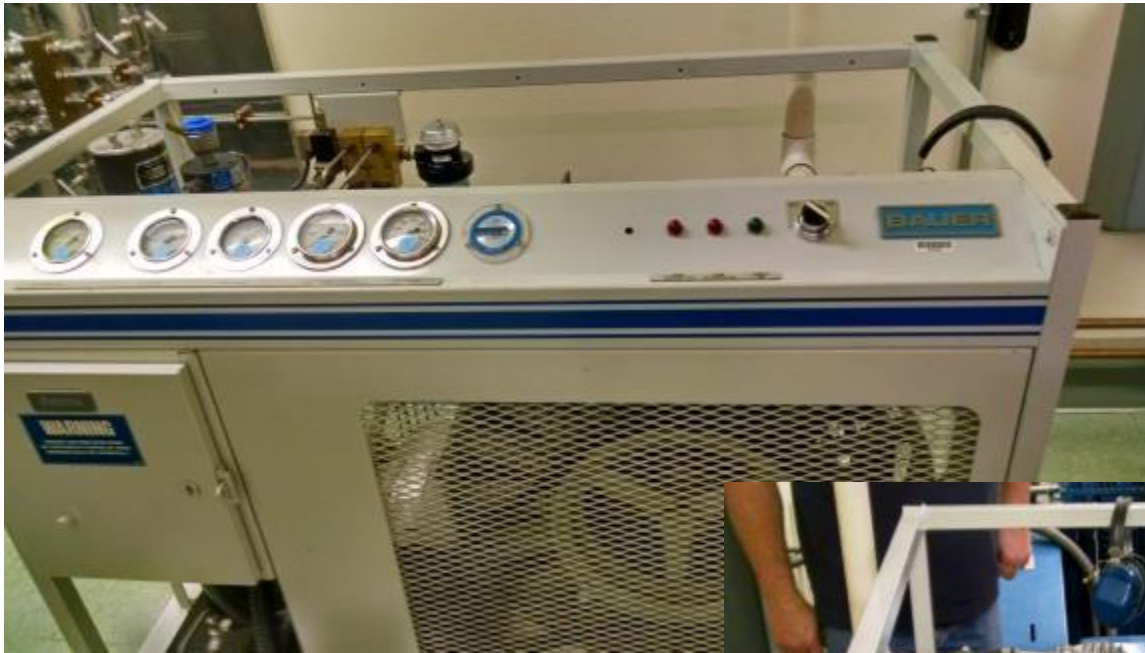


← Extra Oxygen Analyzers,
Each chamber has its own



Compressor Room Manifold →

HP Compressor (Bauer)



15 Hp, less than 500 hours

Additional Charging Stations (not in container)

