

# The January 2016 Newsletter Gardens Gate



## MEMBERSHIP HOLIDAY GATHERING - A HUGE SUCCESS ...

Friends hosted its Membership Holiday Gathering on Tuesday, December 8, 2015, with more than sixty signed up for the festivities. Members had a chance to show off their culinary skills or just buy something to share with others, or, they could make a donation at the door. They enjoyed the evening with their families and friends and Volunteers, all gathered together in the spirit of the Christmas Holidays enjoying fellowship in The Pavilion. There was even a door prize raffle along with a 50/50 raffle - both quite popular. The food was fabulous, the libations were delicious and the special entertainment preview of Friday's concert was beautiful. The night belonged to goodness! *Editor*

Continued on Pg 5



Pat Armstrong looking after the check-in table, including the door prize and 50/50 drawings...

## CONTENTS :

Board & Committees  
**Friends' Election 2016 Notice**  
Video of the Month  
Home for the Holidays Concert  
Membership Gathering Pictures  
Staging Kids Events  
Santa's Annual Gardens Visit

Pg2	January Calendar	Pg15
Pg2	Horticulture Happenings	Pg16
Pg2	Can You Dig It	Pg19
Pg3	HORTence	Pg20
Pg5	Happenings @ The Gardens	Pg21
Pg10	<b>BOTANICA 2016</b>	Pg22
Pg12	Supporters & Jazz Jams	Pg23

# Reminder

**FRIENDS' ANNUAL MEETING  
& BOARD ELECTION  
JANUARY 25TH • 5:30 - 7:00 PM**



**Port St. Lucie**

*Botanical Gardens*

2410 SE Westmoreland Blvd.

Port St. Lucie, FL 34952

Phone: 772.337.1959

Fax: 772.237.5952

E-mail: [info@pslbotanicalgardens.org](mailto:info@pslbotanicalgardens.org)

Web: [www.pslbotanicalgardens.org](http://www.pslbotanicalgardens.org)

Hours: Wednesday - Saturday 10am - 4pm

Sunday Noon - 4pm

Closed Monday, Tuesday & Holidays

Suggested Donations:

Adults \$5

Students \$2

Children 12 & Under Welcome

Members and Active Military

(with family) Welcome (IDs required)

### Officers & Directors . . .

President: Bill Manning

Vice President: Pat Armstrong

Treasurer

& Asst Secretary: Richard McAfoos

Directors: Illona Christie

Joleen King

Josephine Telenko

Ben Woodruff

### Standing Committee Chairs . . .

Strategic Planning Committee: Bill Manning

Horticulture Committee: Josephine Telenko

Finance Committee: Richard McAfoos

Membership & Volunteer

Committee: Illona Christie

Gift Shop Committee: TBD

Resource Development

Committee: Pat Armstrong

Election Committee: Brenda Gustafson

### Newsletter...

Editor: Richard McAfoos

Design: Mark Barnes

The Port St. Lucie Botanical Gardens is managed and operated by Friends of the Port St. Lucie Botanical Gardens, Inc. The Friends of the Port St. Lucie Botanical Gardens, Inc. receives no funding from any government agency. Your admission donations help us maintain and grow The Gardens.

# ATTENTION ALL MEMBERS

# SAVE THE DATE

JANUARY 25, 2016 5:30 – 7:00 PM

Friends of the Port St. Lucie Botanical Gardens will hold their Annual Meeting, Voting and Appointment of the 2016 Board.

The newly elected Board will then take office.



Look for your PSLBG Voting Package in the mail and email by 1/3/2016. The package includes, Proxy, Financial and last years' Annual Meeting reports and Candidate BIO's. Return or deliver to the Gardens in a sealed envelope marked BALLOT. The packet is also available on the PSLBG website, at the PSLBG office or contact:

Brenda Gustafson, Election Committee Chair  
[elections@pslbotanicalgardens.org](mailto:elections@pslbotanicalgardens.org).

**PLEASE VOTE!**

**VIDEO OF  
THE MONTH**

**NATIONAL  
GEOGRAPHIC  
IN THE WILD**

## HOME FOR THE HOLIDAYS BENEFIT CONCERT ...

Friends hosted the Home For The Holidays benefit concert on Friday, December 11, 2015. This well attended event, with more than 80 tickets sold, drew an enthusiastic crowd of music lovers. The duo, Don Meritt & Annette Moreau, have an extensive list of venues where they've performed over the years, from Broadway to nightclubs to television, which resulted in a wide variety of crowd pleasing selections. Their CDs remain on sale at the Gift Shop. During the performance they even received a couple standing ovations. They are interested in perhaps returning for future performances. The crowd's warm, enthusiastic reception laid the way for that.

*Editor*



Continued on Pg 4



And applause there was and was and was... What a fantastic concert!





Super-Duper food was in abundance...



The tasty appetizer table...



Tasty libations got them in the spirit...







Jessica - lady-in-blue...



## WHAT DOES IT TAKE TO STAGE A KIDS' EVENT ...

While we hold many children's events throughout each year, they don't just happen - each takes a lot of planning, coordination and management. Illona Christie has been looking after this responsibility for some time now, utilizing different volunteer teams to orchestrate the various events. While some of the events go more smoothly than others, when in any household with children is anything ever constant or predictable??? The teams vary in size & skills depending on each event's 'topic'. Two of our most successful recent annual events were BOOtanical Halloween (last newsletter) and the December Santa event. Each drew good crowds and maybe at times seemed chaotic, but in the end all went well because fun events with lots of kids need to be exciting - to say the least. We thank Illona & our valued Volunteers for making all of these events special & educational for the children – OUR GOAL! *Editor*

PS: This was the November Pine Cone Critters event.



Our Team: (L-R) Illona, Fran, Stephanie, Emily, Jessica, Khan, Emily...





Illona with some of the proud kids showing off their pine cone creations (really good!)

## SANTA'S ANNUAL VISIT TO THE GARDENS ...

Once again, Santa Claus found time out of his busy schedule to visit all the children at The Gardens. This annual event was Saturday, December 5, 2015. It was attended by well over 100 kids & their family's during the two hour open house. It was a sight to see with those little ones sizing up Santa, deciding if they wanted to sit on his lap or just partake of his candy. Once again, our valued Volunteers staffed the successful event. The photos speak for themselves! *Editor*







# January

## Calendar of Events

1 <sup>st</sup>	Closed for Holiday Weekend	Happy New Year to All!	
2 <sup>nd</sup>	Closed for Holiday Weekend		
3 <sup>rd</sup>	Closed for Holiday Weekend		
4 <sup>th</sup>	Board of Directors Meeting	5:00 – 6:00 pm	Members Welcome
6 <sup>th</sup>	Tai Chi for Health Classes	10:30 – 11:30 am	Fee info. call 772.408.6008
9 <sup>th</sup>	PSL Anglers Nautica Flea Market	8:00 am – 3:00 pm	All Welcome
12 <sup>th</sup>	PSL Orchid Society Meeting	11:00 am – 3:00 pm	All Welcome
13 <sup>th</sup>	Beginning Spanish Classes	10:00 – 11:30 am	Fee info. call 772.924.1002
13 <sup>th</sup>	Tai Chi for Health Classes	10:30 – 11:30 am	Fee info. call 772.408.6008
13 <sup>th</sup>	Bobbie's Jewelry Making Class	12:30 – 3:30 pm	Fee info. call 772.475.5593
13 <sup>th</sup>	Ft Pierce Jazz & Blues Jazz Jams	6:30 – 9:30 pm	\$5 Donation, Members \$4
20 <sup>th</sup>	Beginning Spanish Classes	10:00 – 11:30 am	Fee info. call 772.924.1002
20 <sup>th</sup>	Tai Chi for Health Classes	10:30 – 11:30 am	Fee info. call 772.408.6008
21 <sup>st</sup>	Hibiscus Society Meeting	10:30 – 1:00 pm	All Welcome
25 <sup>th</sup>	Rio Lindo Garden Club Meeting	12:45 – 4:00 pm	Members Welcome
25 <sup>th</sup>	Friends' Annual Meeting and Election	5:30 – 7:00 pm	Members Welcome
27 <sup>th</sup>	Beginning Spanish Classes	10:00 - 11:30 am	Fee info. call 772.924.1002
27 <sup>th</sup>	Tai Chi for Health Classes	10:30 - 11:30 am	Fee info. call 772.408.6008
27 <sup>th</sup>	Bobbie's Jewelry Making Class	12:30 – 3:30 pm	Fee info. call 772.475.5593
27 <sup>th</sup>	Ft Pierce Jazz & Blues Jazz Jams	6:30 – 9:30 pm	\$5 Donation, Members \$4

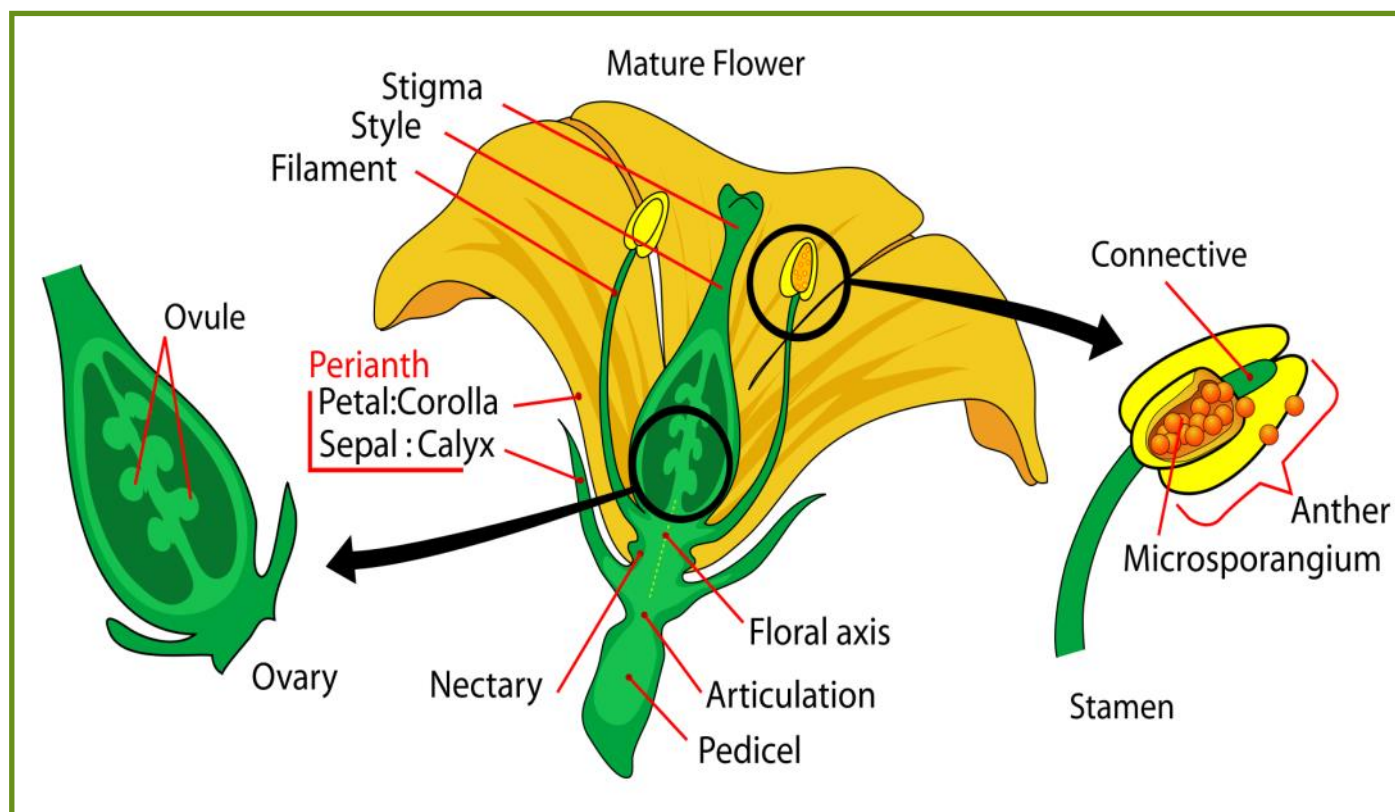
For more information on these & other events, please call 772.337.1959

# HORTICULTURE HAPPENINGS...

## Friends of the Port St. Lucie Botanical Gardens Horticulture Class Series 2015 Plant Sex Varieties



1. In order to breed new plants, we need to understand plant sex. It's much more complicated than mammals. They have different varieties of sexuality - flower sexuality, plant sexuality, population sexuality. Also, sexuality can be impacted by weather, time of day, etc.
2. Flower sexuality – There are two basic types; perfect (has all the parts); imperfect (missing some parts). Called complete and incomplete, they are also called hermaphroditic versus male and female. Imperfect (incomplete, male or female) may change sex based on a variety of factors.
3. Plant sexuality: There are four basic types – A. All complete flowers (hermaphrodites, many fruit trees, many vegetables); B. All male and all female flowers on each plant (monoecious, many evergreens such as pines, grasses such as corn); C. All male or all female flowers on separate plants (dioecious, papayas, hollies); D. Mixtures of complete, male and female (subdioecious or polygamous).
4. Population sexuality - Similar terms. There are 8 basic types but others possible; Hermaphrodites, monoecious, dioecious, androdioecious (males and hermaphrodites), gynodioecious (females and hermaphrodites), gynoecey (all females), polygamous

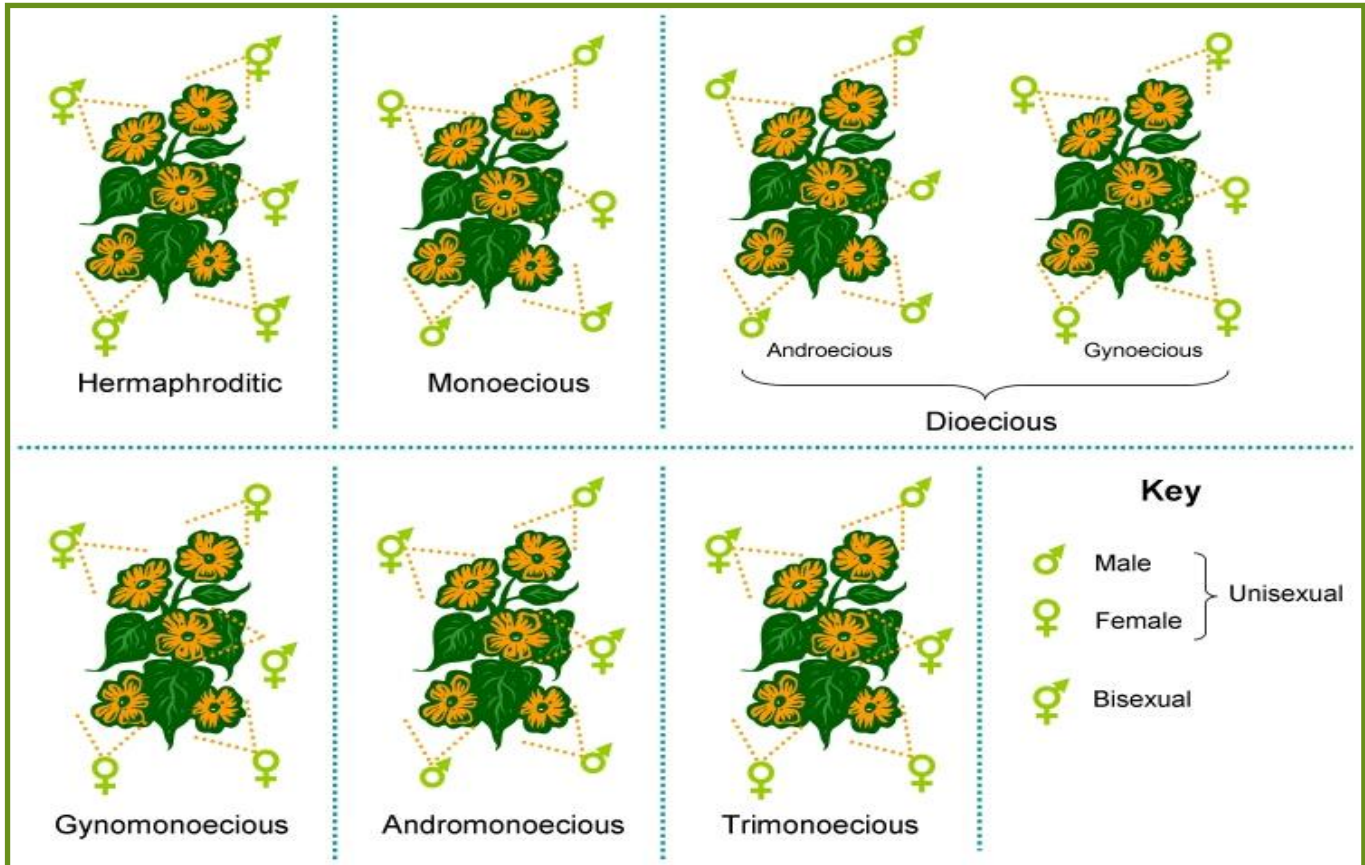


3. Plant sexuality: There are four basic types – A. All complete flowers (hermaphrodites, many (hermaphrodites and unisexual plants), polygamodioecious (hermaphrodites and males

on some plants and hermaphrodites and females on other plants).

5. Functions. Plants often use a variety of methods to limit reproduction. Even in complete flowers the timing of stigma receptivity may be different then the timing of pollen release. This prevents

number of "races" of avocado which may or may not be cross compatible. There are also plants which change sex over their lifetime being one sex when young and another when more mature, for example some arums. There are also plants which produce a different mixture of flowers depending on the time within



selfing and encourages outcrossing. Stigma receptivity is sensitive to chemical changes, air moisture, plant moisture, etc. This doesn't mean that the parts are not present, just that they are being controlled.

6. To further complicate matters, plants flower may change their sex over time, during the same day, and due to other stimuli. Most common example is avocados which generally have a double opening being female at one time of the day and male at another. In addition, there are a

the bloom season, for example early males and late females.

### Plant Sexuality

- Monoecious - separate flowers for male and female both on one plant - corn
- Dioecious - male and female plants are separate - separate sexes - ginkgo
- Perfect flower - flower has stamens and carpels – bisexual flowers
- Imperfect flower - lacks either stamens or carpels - will be staminate or carpellate (pistillate)
- Complete - has sepals, petals, stamens and carpels
- Incomplete - lacking one of the 4 main flower parts

## **GARDEN CLUBS CONTRIBUTE TO THE HOLIDAY SPIRIT ...**

Two of our garden club partners provided beautifully decorated Christmas Trees which adorned the lobby area of The Pavilion for the Holiday Season. Gigi Morelli & the St. Lucie West Garden Club shared with us their beautifully decorated Gold Tree. The Rio Lindo Garden Club shared with us their beautifully decorated Traditional Tree. Both trees deserved the Platinum Award for beauty by all who saw them. They were absolutely beautiful and Friends thanks both garden partners for their generous participation. *Editor*



Rio Lindo Garden Club tree...



St. Lucie West Garden Club tree...



# Can You Dig It?



## UNITED STATES BOTANIC GARDEN

The United States Botanic Garden is rooted in the nation's heritage. During the late 18th century, George Washington, Thomas Jefferson and James Madison shared the dream of a national botanic garden and were instrumental in establishing one on the National Mall in 1820.

The institution actually traces its beginning to 1816, when the constitution of the Columbian Institute for the Promotion of Arts and Sciences in Washington, D.C., proposed the creation of a botanic garden to collect, grow and distribute plants of this and other countries that might contribute to the welfare of the American people. The Institute's garden was established by Congress in 1820 to the west of the Capitol Grounds, from First Street to Third Street between Pennsylvania and Maryland Avenues. This facility functioned until shortly after the organization stopped holding meetings in 1837.

In 1842, the idea of a national botanic garden was reestablished when the United States Exploring Expedition to the South Seas (the Wilkes Expedition) brought a collection of living plants from around the globe to Washington, D.C. Initially placed in a specially constructed greenhouse behind the Old Patent Office Building, the plants were moved in late 1850 into a new structure on the site previously occupied by the Columbian Institute's garden.

In continuous operation and open to the public since 1850, the Botanic Garden moved to its present location in 1933, a complex located along the north and south sides of Independence Avenue bordered by First Street and Third Streets, SW. The Garden includes the Conservatory, which was renovated from 1997-2001; the National Garden, which opened in 2006; and Bartholdi Park, which was created in 1932. A plant production and support facility opened in Anacostia in 1993, which includes 85,000 square feet under glass divided into 34 greenhouse bays in addition to maintenance shops.

The U.S. Botanic Garden was formally placed under the jurisdiction of the Joint Committee on the Library of Congress in 1856 and has been administered through the Architect of the Capitol since 1934. The Architect of the Capitol has served as Acting Director of the U.S. Botanic Garden and is responsible for the maintenance and operation of the Garden and for any construction, changes or improvements made.



United States Botanic Garden

See more at: <http://www.usbg.gov>.

# HELPFUL HINTS (TIPS) FROM HORTENSE...



## Did you know:

If you get into the bottom of a well or a tall chimney and look up, you can see stars, even in the middle of the day.

When a person dies, hearing is the last sense to go. The first sense lost is sight.

In ancient times strangers shook hands to show that they were unarmed.



Strawberries are the only fruits whose seeds grow on the outside.

Avocados have the highest calories of any fruit at 167 calories per hundred grams.

The moon moves about two inches away from the Earth each year.

The Earth gets 100 tons heavier every day due to falling space dust.

Due to earth's gravity it is impossible for mountains to be higher than 15,000 meters.

Mickey Mouse is known as "Topolino" in Italy.

Soldiers do not march in step when going across bridges because they could set up a vibration which could be sufficient to knock the bridge down.

Everything weighs one percent less at the equator.

For every extra kilogram carried on a space flight, 530 kg of excess fuel are needed at lift-off.

The letter J does not appear anywhere on the periodic table of the elements.

\*HORTense takes no responsibility for her claims. And furthermore, she is penniless so don't try suing her...



**VISIT OUR  
WEBSITE**





# Annual NAUTICAL FLEA MARKET

Sponsored by Port St. Lucie Angler's Club  
and the Port St. Lucie Botanical Gardens

\*\*\*\*\* FREE ADMISSION \*\*\*\*\*

BOATING, FISHING GEAR & FOOD FOR SALE  
For information call Frank Gamber 772.237.2238

Vendor Application on club's website [WWW.PSLANGLERS.COM](http://WWW.PSLANGLERS.COM)

**January 9th, 2015**  
**Saturday • 8am - 3pm**



Port St. Lucie

*Botanical Gardens*  
Florida

## **Bobbie's** JEWELRY MAKING & REPAIR CLASS

**Pull out that broken brooch or droopy earring, reclaim that broken string of pretty beads, Bobbie can show you how to make everything like new again. Repair materials, tools and instruction and how to hands on will be provided.**

**Only \$20.00 per class! Register today and make or repair all those loved but in need of repair pretties.**

**Call 772.475.5593 to register  
or for further information.**

**Wednesday**  
**January 13, 2016**  
**& Wednesday**  
**January 27, 2016**  
**12:30 - 3:30 pm**





Port St. Lucie

*Botanical Gardens*  
Florida

2410 SE Westmoreland Blvd.  
Port Saint Lucie, FL 34952

February 13th & 14th, 2016

9 am - 4 pm • Saturday & Sunday



BOTANICA



GARDEN FESTIVAL

& Plant Sale



**FREE Parking • Plant carry out service available**

**FREE admission to the park & plant sale**

**A \$1 donation or more will help our Gardens  
to grow and is always gratefully appreciated.**

# S U P P O R T E R S

**POST INSURANCE**  
YOUR KEY TO PEACE OF MIND.



**Kathy Post**  
Agent/Owner

Insurance for:  
**Auto  
Home  
Business  
Life**

Post Insurance  
& Financial, Inc.  
**772.878.8184**

[www.InsureWithPost.com](http://www.InsureWithPost.com)

**The 19th Hole at the Saints**  
Restaurant & Banquet Hall



**772-337-0180**  
Carl Bussett/Rick Aslin  
Proprietors

**& Sandpiper Room**

2601 SE Morningside Blvd.  
Port St. Lucie, FL 34952



**BETH GRADY**  
REALTOR®

**SWEET LIFE**  
REALTY GROUP

718 SW PORT ST LUCIE BLVD #4  
PORT ST LUCIE, FL 34953

**DIRECT**  
**772.361.1447**

**E-MAIL**  
**BETH@SWEETLIFEREALTY.COM**

"Home values have increased, call me today for a free market evaluation."

*The service you deserve, the lifestyle you desire...*

RECREATION: (772) 807-4499 HOSPITALITY: (772) 807-4488  
HUMANA FITNESS & WELLNESS CENTER: (772) 204-7101

*Weekly Outdoor Market • Banquet Facilities  
Membership Specials • Special Events*



Port St. Lucie  
**Civic Center**  
Where the Research Coast Meets

9221 S.E. CIVIC CENTER PL  
PORT ST. LUCIE, FL 34952

Say I Do - Wedding Ceremonies  
[www.maureendavisweddingofficiantllc.com](http://www.maureendavisweddingofficiantllc.com)



Maureen Davis • Wedding Officiant  
Port Saint Lucie, Florida

772-323-0945 (c) 772-985-7946

Beach Weddings a Specialty  
Maureen Ahern Davis  
[ipronounceu@gmail.com](mailto:ipronounceu@gmail.com)

**Royal Green**  
LANDSCAPE & PEST MGMT INC.

831 N.E. Dixie Hwy Jensen Beach Florida 34957

EXPERT LAWN, TREE & SHRUB SPRAYING  
**(772) 334-1144**

Free Inspection & Estimates  
No Fine Print!!

**NEW CUSTOMER OFFER**  
**\$30 CREDIT**  
To Redeem Mention This AD

Visit our new website:  
[www.Royalgreenlandscapeandpest.com](http://www.Royalgreenlandscapeandpest.com)

- Rugose Spiraling White Fly Control
- Interior Pest Control
- Lawn, Tree & Shrub Fertilization
- Disease Control
- Insect & Weed Control
- Fungus Control
- Guaranteed Results
- Locally Owned and Operated Since 1996
- Preventative Grub Control
- Citrus & Palm Care
- Commercial and Residential

\* Licensed & Insured BMP State Certified Technicians



**THE SAINTS**  
At Port St. Lucie Golf Course  
[www.CityofPSL.com/Golf](http://www.CityofPSL.com/Golf)

2601 SE Morningside Blvd. • (772) 398-2901  
Port St. Lucie, FL 34952 • Fax: (772) 398-2778

**PORT ST. LUCIE PARKS & RECREATION**



**Mark Barnes Services**  
Making You And Your Business Look Great

**772.801.8800**  
[Mark@MarkBarnesMusic.com](mailto:Mark@MarkBarnesMusic.com)

Business Card Designs  
Logo Designs  
Graphic Designs  
Specialty Cards  
Real Estate Ads & Designs  
Video Home Tours  
Basic Web Sites  
Copyright Services  
ASCAP & Music Site Setup  
QR Code Design  
Video Bios and Resumes  
Power Point Presentations  
Virtual Assistant  
Real Estate Services

**Welcome to All Garden Goers...**


This month our Jazz Jams will be held on  
**January 13<sup>th</sup> & January 27<sup>th</sup>**  
starting at 6:30 pm

Donation \$5 per person.  
Gardens & Jazz Society Members \$4 per person.

**PUT YOUR AD HERE**

**Contact Mark Barnes**  
**at 772.801.8800**

**or e-mail NEWS@**  
**PSLBOTANICALGARDENS.ORG**



**JAZZ JAMS**

**At The Gardens**

Sponsored by the  
Fort Pierce Jazz  
& Blues Society

**Come Join US!**