

# Movie Night

Extra Credit Opportunity worth a substitute grade for the 2<sup>nd</sup> 9-weeks.

**Directions:** Rent/Purchase Lincoln, ...watch, and then create a poster summarizing the plot, the scenes, the historical accuracy. Write a review, collect relevant images and primary sources, and write your own prompt.

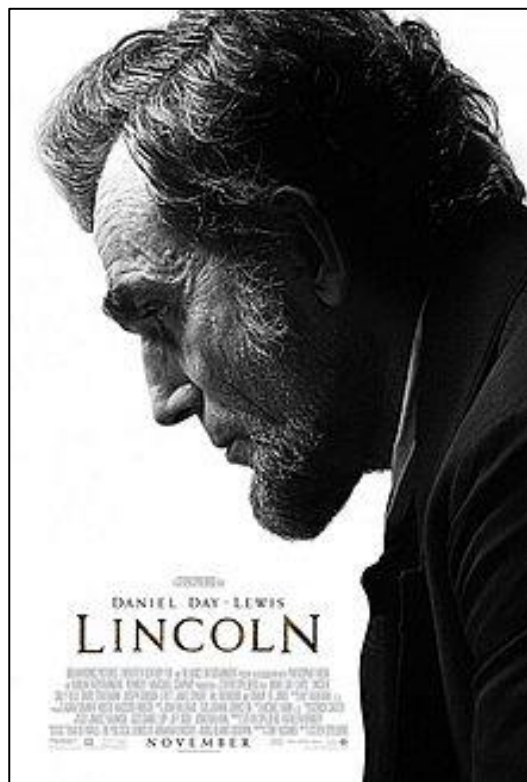
**Pay attention to the rubric to ensure a quality product.**

**DUE BY DECEMBER 2nd**

Name: \_\_\_\_\_ Class Period: \_\_\_\_\_

Date of viewing: \_\_\_/\_\_\_/\_\_\_

Parent Signature Verifying Movie Was Watched: \_\_\_\_\_



RUBRIC .....Components of Movie Review POSTER...	Points Possible	Points Earned
<b>Title Page/Rubric</b> → this page completed & turned in to your teacher by the due date	10 (all or nothing)	
<b>Summary of movie and Prompt</b> → Story Line/Plot and Main Characters summarized Historical themes clearly addressed in summary (10) Original Essay Prompt (10) (high quality, original, relevant free response essay prompt...use story line/plot/themes to construct prompt; make sure the prompt include themes)	20	
<b>Reflection on movie</b> → Portrayal of history; perspective; bias (5) Historical events/facts' factual accuracy (5) Quality of film, favorite scene(s), and personal recommendation (5) New historical information learned (5)	20	
<b>Presentation/Quality of Poster</b> → Poster is standard size, at least 22 x 28, Title of movie prominently displayed with free response essay prompt below or beside title	10 (all or nothing)	
<b>Aesthetics</b> → Neatly organized eye catching, components are framed/bordered, components are easy to read & understand NO STAPLES, no creases/wrinkles, no pencil	10 (all or nothing)	
<b>Primary sources</b> → 4 primary source documents that supplement the content of movie; sources are clear, legible, and relevant to both the movie and to the FRQ (5 points each)	20	
<b>Images</b> → 5 images showcasing movie; significant scenes, characters; pictures are clear, legible, and relevant (2 points each)	10	
<b>Total Points Earned:</b>	100	