

F800 CNC BACK GAUGE FOR FAB50 & FAB80 PRESS BRAKES

SECTION 1: X-Axis Back Gauge

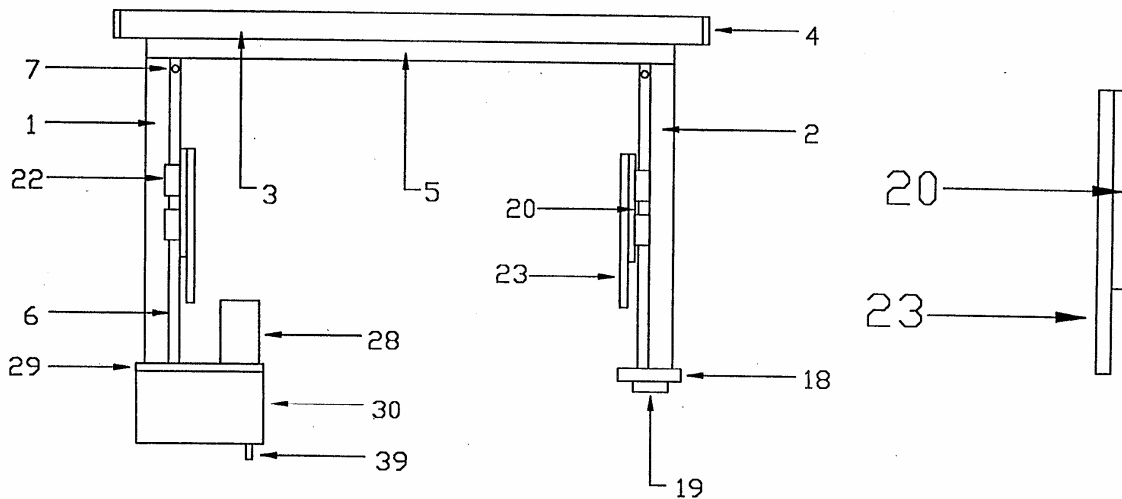
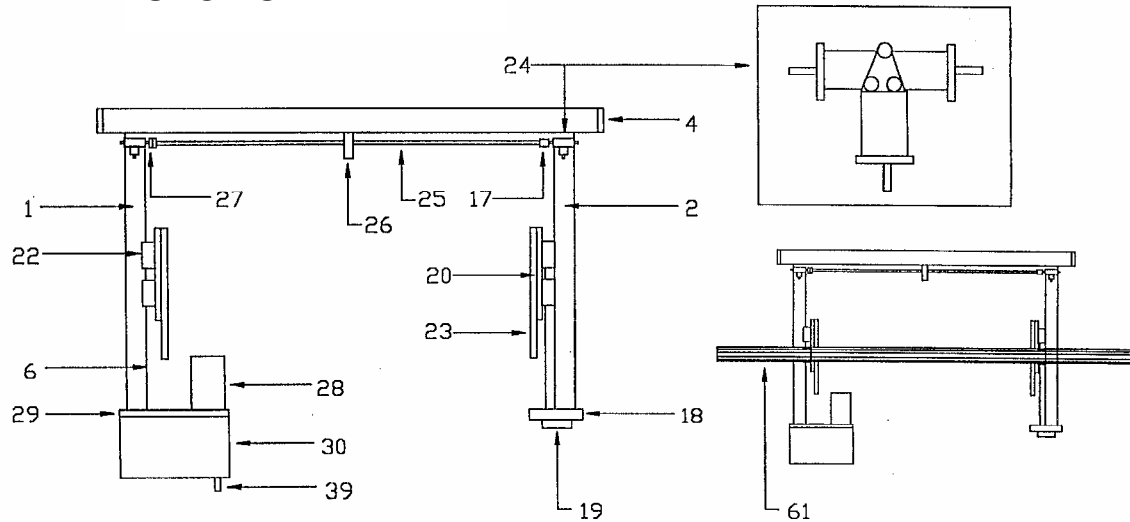
To order parts in this section, review the drawings and write down the item numbers of the parts that you require. Refer to the last page in this section for the matching item numbers, part numbers and description.

SECTION 2: Finger Assembly

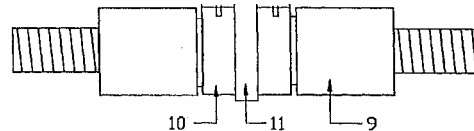
SECTION 3: Manual R-axis, Upright Assembly

Section 4: Programmable R-Axis Assembly

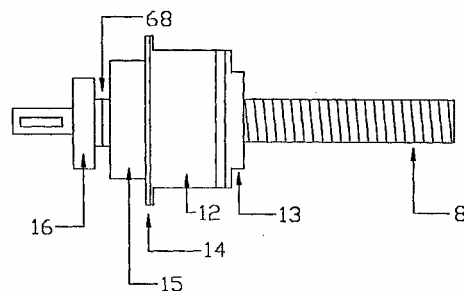
SECTION 1

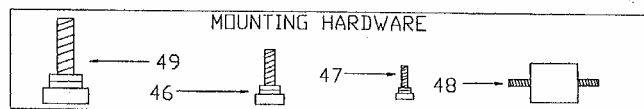
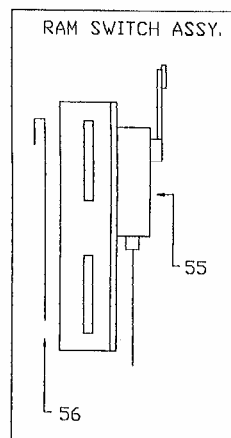
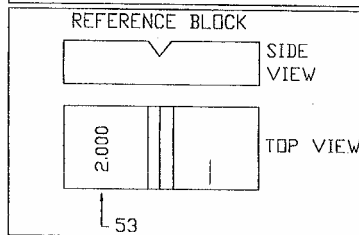
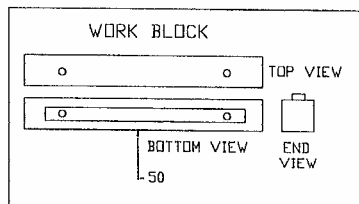
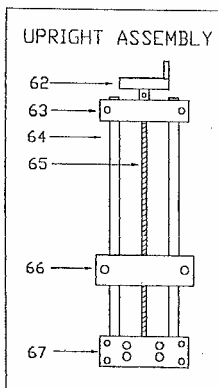
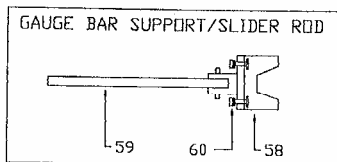
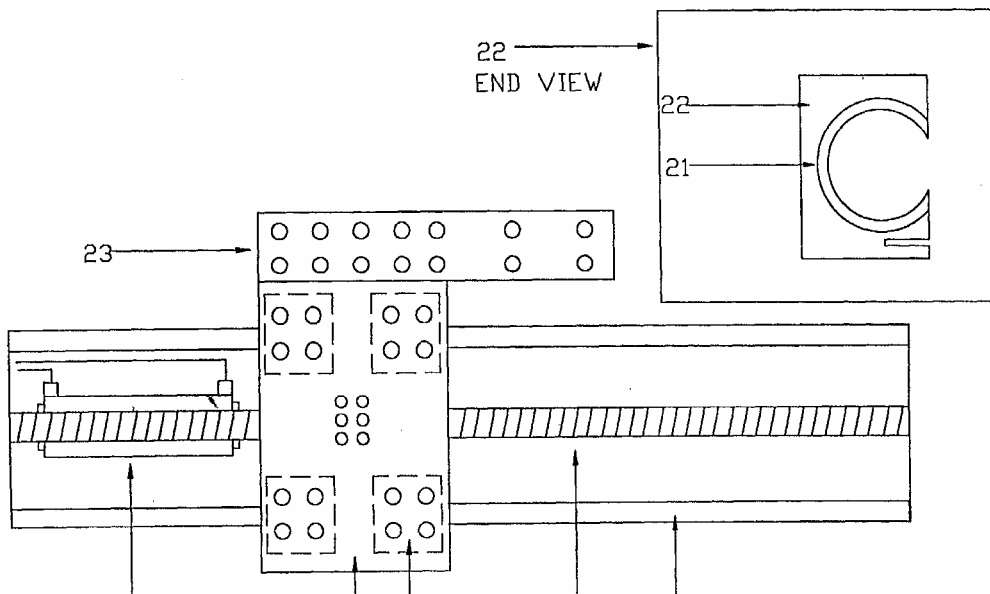
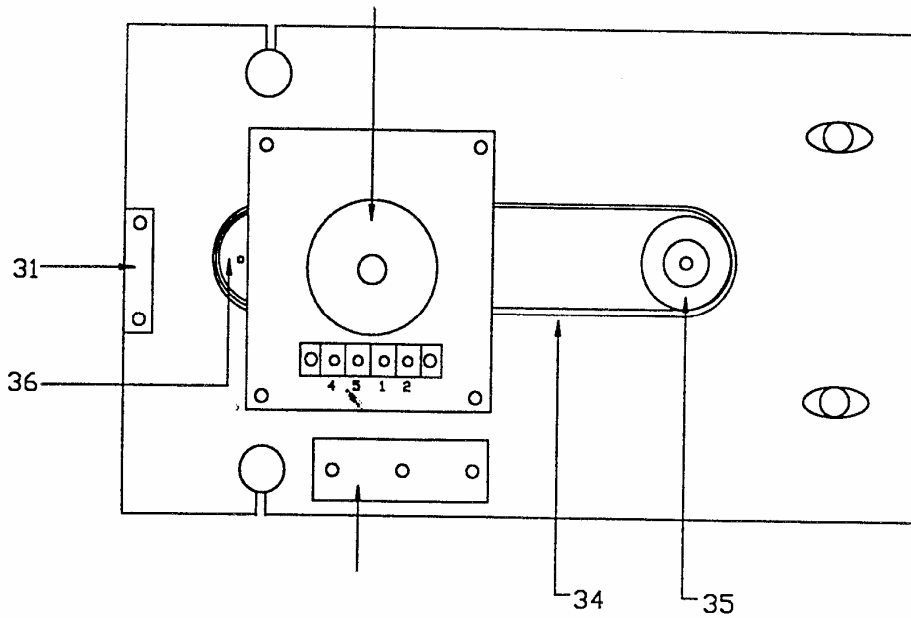


BALL NUT ASSEMBLY



BRAKE ASSEMBLY

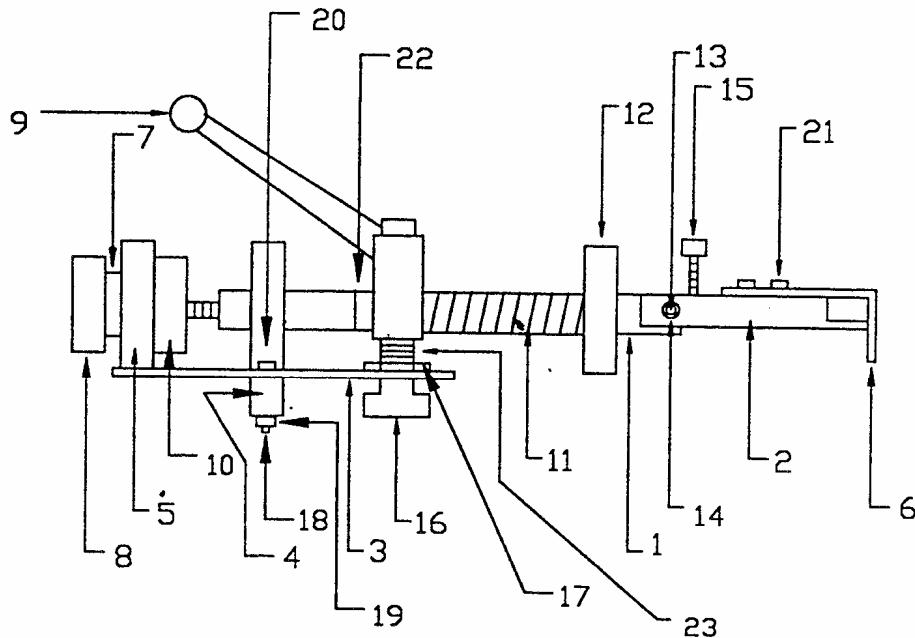




F800 X-AXIS BACK GAUGE

ITEM	PART NUMBER	DESCRIPTION
1	2236-001	LEFT CASTING
2	2236-002	RIGHT CASTING
3	2236-003	FRONT PLATE
4	2236-004-B	END CAP (G/24-B)
	2236-004-HD	END CAP (G/24-HD)
	2236-004-TD	END CAP (G/24-TD)
5	2236-005	BRAKE WIRE CHANNEL
6	2236-006	HARDENED WAY
7	2236-007	ROLL PIN
8	2236-008	BALL SCREW
9	2236-009	BALL NUT
10	2236-010	BALL NUT PLATE
11	2236-011	BALL NUT BLOCK
12	2236-012	BRAKE ARMATURE
13	2236-013	BRAKE DISC.
14	2236-014	BEARING RETAINER
15	2236-015	BEARING
16	2236-016	THD SHAFT COLLAR
17	2236-017	COUPLING, RIGID
18	2236-018	REAR PLATE
19	2236-019	REAR PLATE COVER
20	2236-020	CARRIER PLATE
21	2236-021	BALL BUSHING
22	2236-022	BALL BUSHING
23	2236-023	EXTENDER
24	2236-024	RIGHT ANGLE DRIVE CROWN
25	2236-025-B	CONNECTING ROD (G/24-B)
	2236-025-HD	CONNECTING ROD (G/24-HD)
	2236-024-TD	CONNECTING ROD (G/24-TD)
26	2236-026	ROD SUPPORT
27	2236-017	COUPLING, RIGID
28		MOTOR H-344-H-0802
29	2236-029	MOTOR BRACKET
29A		X-MOTOR ADAPTER
30	2236-030	MOTOR COVER
31	2236-031	COVER BLOCK
33	2236-033	LIMIT SWITCH
34	2236-034	DRIVE BELT
35	2236-035	DRIVE SPROCKET
36	2236-036	DRIVEN SPROCKET
46	2236-046	MOUNT. HARDWARE
47	2236-047	MOUNT. HARDWARE
48		MOUNT. HARDWARE CONT. BOX
49	2236-049	MOUNT HARDWARE
50	2236-050	WORK BLOCK
53	2236-053	REF. BLOCK
58	2236-058	GAUGE BAR SUPPORT
59	2236-059	SLIDER ROD
60	2236-060	TEE BOLT
61	2236-061-B	GAUGE BAR S.E. (G/24-B)
	2236-061-HD	GAUGE BAR S.E. (G/24-HD)
	2236-061-TD	GAUGE BAR S.E. (G/24-TD)

SECTION 2: GF-8 FINGER ASSEMBLY

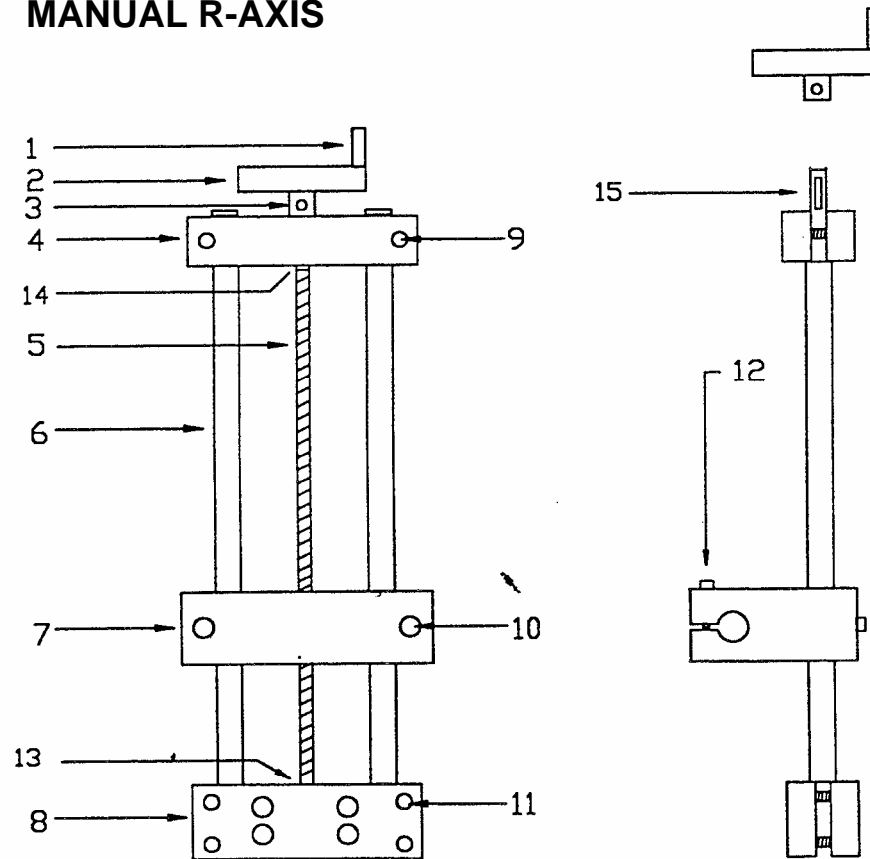


GF-8 FIG. BB PARTS LIST

ITEM	PART NUMBER	DESCRIPTION
1	2236-301	FINGER ROD
2	2236-302	FLIP FINGER
3	2236-303	FINGER PLATE
4	2236-304	FINGER KEY 1/2 X 5/8 X 3
5	2236-305	SHAFT COLLAR (MACHINED)
6	2236-306	TIP ADAPTER
7	2236-307	FLAT WASHER
8	2236-308	KNURLED HEAD SCREW
9	2236-309	RATCHET HANDLE
10	2236-310	KNURLED NUTS
11	2236-311	SPRING
12	2236-312	SHAFT COLLAR
13	2236-313	SOCKET SET SCREW
14	2236-314	LOCK RING
15	2236-315	CAP SCREW (PATCH)
16	2236-316	TEE NUT
17	2236-317	WASHER FLAT
18	2236-318	HALF DOG
19	2236-319	HEX NUT
20	2236-320	BUTTON HEAD CAP SCREW
21	2236-321	BUTTON HEAD CAP SCREW
22	2236-322	SNAP RING
23	2236-323	SOCKET SET SCREW

SECTION 3: MANUAL R-AXIS & FINGER ASSEMBLY

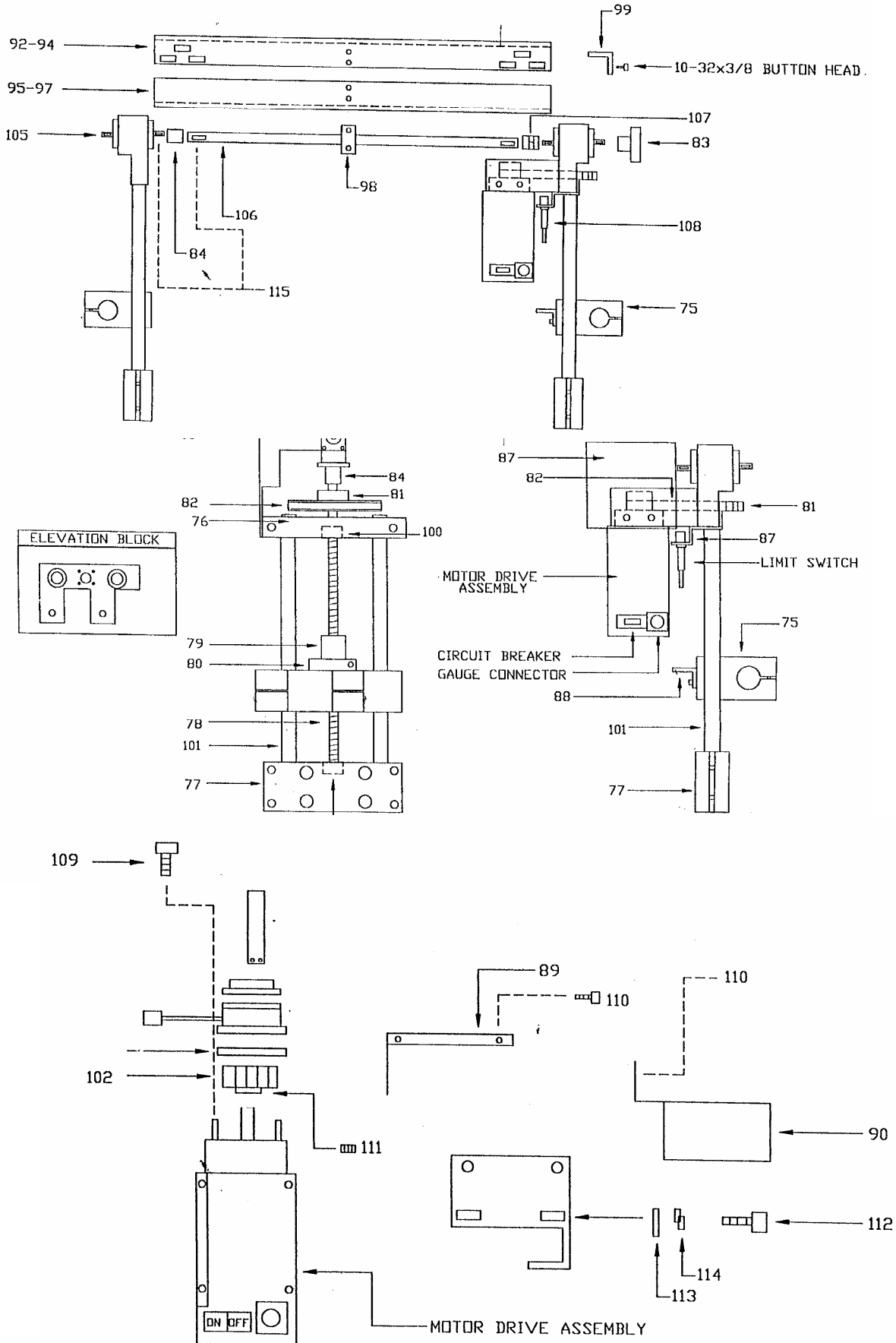
MANUAL R-AXIS



UPRIGHT ASSEMBLY FIG NN

ITEM	PART NUMBER	DESCRIPTION
1	2236-401	HAND
2	2236-402	HANDWHEEL
3	2236-403	SET SCREW
4	2236-404	TOP CLAMP
5	2236-405	VERTICAL LD.SC.
6	2236-406	VERTICAL SHAFT
7	2236-407	ELEVATION BLK.
8	2236-408	BOTTOM CLAMP
9	2236-409	SOC CAP SCREWW
10	2236-410	SOC CAP SCREW
11	2236-411	SOC CAP SCREW
12	2236-412	SHCS
13	2236-413	BALL
14	2236-414	WASHER
15	2236-415	WOODRUFF KEY

SECTION 4: PROGRAMMABLE R-AXIS



PROGRAMMABLE R-AXIS PARTS LIST

ITEM	PART NUMBER	DESCRIPTION
75	2236-075	ELEVATION BLOCK
76	2236-076	UPPER CLAMP
77	2236-077	LOWER CLAMP
78	2236-078	BALL SCREW
79	2236-079	BALL NUT
80	2236-080	BALL NUT PLATE
81	2236-081	SPROCKET
82	2236-082	BELT
83	2236-083	HAND WHEEL
84	2236-084	COUPLING
87	2236-087	32 AD MOTOR BKT
88	2236-088	SWITCH ACTUATOR
89	2236-089	MTR BKT COVER
90	2236-90	BELT GUARD
91	2236-91	G. BOX SUP. L&R
92	2236-092-HD	CHAN HD
93	2236-093-B	CHAN B
94	2236-094-TD	CHAN BPG
95	2236-095	CON ROD CVR (CHAN) HD
96	2236-096	CON ROD CVR (CHAN)B
97	2236-097	CON ROD CVR (CHAN) BPG
98	2236-098	CON ROD SUP (ALL SYS)
99	2236-099	CON ROD CVR
100	2236-100	BEARING
101	2236-101	SHAFT
102	2236-102	SPROCKET
105	2236-105	GEAR BOX
106	2236-106-B	CONNECTING ROD (G/24-B)
	2236-106-HD	CONNECTING ROD (G/24-HD)
	2236-106-TD	CONNECTING ROD (G/24-TD)
107	2236-107	FLEXIBLE COUPLING
108		LIMIT SWITCH
109	2236-109	SCREW (SHCS) (4)
110	2236-110	SCREW (BUTTON) (6)
111	2236-111	SCREW (SET) (2)
112	2236-112	SCREW (SHCS) (4)
113	2236-113	HEAVY F/W (4)
114	2236-114	LOCK WASHER (4)
115	2236-115	WOODRUFF KEY (3)