

# *ASB - Conestoga*

## Solid Wood Furniture



*2020*

Handcrafted in Canada

# ASB - Conestoga

## Solid Wood Furniture

### Table of Contents

Hardware Options . . . . .	2	"A" Series Office Desks . . . . .	55
Textures . . . . .	3	Bevel Top Office . . . . .	56
Textures . . . . .	4	Desks & Filing Cabinets . . . . .	57
The "A" Series Beaded Bedroom Set . . . . .	5	Student Desks . . . . .	58
Backwoods Bedroom Set . . . . .	7	"A" Series Bookcases & Storage Units . . . . .	59
Bevel Top Bedroom Series . . . . .	7	Dakota Bookcases & Storage Units . . . . .	60
Century Bedroom . . . . .	8	Farmhouse Bookcases & Storage Units . . . . .	61
The Dakota Bedroom Series . . . . .	9	JFB Bookcases & Storage Units . . . . .	62
More Dakota Bedroom Pieces . . . . .	10	Rustic Bookcases & Storage Units . . . . .	63
Dakota Beds . . . . .	11	Book Cases & Storage Units . . . . .	64
Dakota Bunk & Loft Beds . . . . .	12	Vanities . . . . .	65
The F4 Series Bedroom Set . . . . .	13	"A" Series Sideboards . . . . .	66
More F4 Series Bedroom Pieces . . . . .	14	"A" Series Sideboards & Corner Units . . . . .	67
Gatineau Bedroom . . . . .	15	Harvest Sideboard & Hutches & Buffets . . . . .	68
The Harvest Bedroom Series . . . . .	16	JFB Rustic Sideboards . . . . .	68
Homestead Bedroom . . . . .	17	JFB Rustic Sideboards . . . . .	69
Kennaway Bedroom . . . . .	18	JFB Rustic Sideboards & Corner Units . . . . .	70
Kennaway Bedroom . . . . .	19	JFB Rustic Buffets . . . . .	71
Kenora Bedroom . . . . .	20	Table Leg Options . . . . .	72
Kenora Bedroom . . . . .	21	The Backwoods Trestle Dining Suite . . . . .	73
The Klondike Bedroom . . . . .	22	The Backwoods Leg Dining Suite . . . . .	74
The Lakeshore Collection . . . . .	23	The Bevel Top Dining Suite . . . . .	75
The Nith River Bedroom . . . . .	24	Bevel Top Dining Pieces . . . . .	76
More Nith River Bedroom Pieces . . . . .	25	The Bonanza Dining Suite . . . . .	77
The Rideau Bedroom Set . . . . .	26	The Century Leg Dining Suite . . . . .	78
More Rideau Bedroom Pieces . . . . .	27	Century Pedestal Dining Suite . . . . .	79
Warehouse Bedroom . . . . .	28	More Century Dining Suite . . . . .	80
Yukon Turnbuckle Bedroom Series . . . . .	31	East Lakes Kitchen Islands . . . . .	81
Power Management For Nightstands . . . . .	32	The Dakota Breakfast Island and Bar Sets . . . . .	82
Cottage Slat Beds . . . . .	33	The Dakota Dining Suite . . . . .	83
Bookcase Beds . . . . .	33	The Dakota Double Pedestal Dining Suite . . . . .	84
Panel Beds . . . . .	34	Saddle Benches . . . . .	85
Mission Beds . . . . .	35	Millwright Dining Suite . . . . .	86
Poster Beds . . . . .	35	Homestead Dining Suite . . . . .	87
Beds Options . . . . .	36	Klondike Dining Suite . . . . .	88
Drawers For Beds . . . . .	37	Laventa Tables & Distillery Pub Table . . . . .	89
Entertainment Units . . . . .	38	Maxwell Dining Set . . . . .	90
Entertainment Stands . . . . .	39	The Nith River Dining Suite . . . . .	91
Entertainment Stands . . . . .	40	Nith River Dining Tables . . . . .	92
Dakota Entertainment . . . . .	41	Nith River Dining Tables . . . . .	93
Entertainment Units . . . . .	42	Palisade Dining Suite . . . . .	94
"A" Series Occasional Tables . . . . .	43	Live Edge Pillar Collection . . . . .	95
Backwoods & Century Occasional Tables . . . . .	44	Small Tables . . . . .	95
Balustrade and Distillery Occasional Tables . . . . .	45	The Live Edge Waterfall Dining Suite . . . . .	96
Country & Kennaway Occasional Tables . . . . .	46	Slab Top Turnbuckle Table & Bench . . . . .	97
Dakota Occasional Tables . . . . .	47	Yukon Turnbuckle Dining Room . . . . .	98
Dakota Occasional Tables . . . . .	48	More Yukon Dining Room . . . . .	99
Homestead Occasional Tables . . . . .	49	Yukon Turnbuckle Islands . . . . .	100
Console & Nesting Tables . . . . .	49	Simplicity Islands & Bars . . . . .	101
Live Edge Pillar & Laventa Occasional Tables . . . . .	50	More Simplicity Islands . . . . .	102
Millwright and Klondike Occasional Tables . . . . .	51	Solid Wood Chairs . . . . .	103
Nith River Occasional Tables . . . . .	52	Stools . . . . .	109
Live Edge Waterfall Collection . . . . .	53	Loveseats . . . . .	109
Yukon Turnbuckle Occasional Tables . . . . .	54	Love Seats & Hall Benches . . . . .	110
		Rocking Chairs . . . . .	111
		Barn Doors . . . . .	112
		Miscellaneous Items . . . . .	113

# Hardware Options



Wooden Knobs



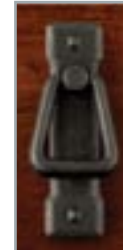
Harvest Cup Pulls & Knobs



Silver Knobs



Mission Drawer Pulls



Mission Door Pulls



Satin Black Rhapsody



Bronze Manor Knob



Manor Pull



Rustic Iron Pull



Rustic Iron Knob



Silver Cup Pull



7" Backwoods Pull



5" Bar Pull



10" Bar Pull



Rideau Knob & Pull



H17 Knob



Robinson Pull



Warehouse Pull



K9 Knob



12" Millwright Pull



Gatineau Pull

# Textures



Millsawn

## Millsawn Texture

Millsawn texture is our most rustic texture, creating a rugged, natural look and feel. Millsawn texture is created by using rough lumber, as it comes from the sawmill, with some handplaning and sanding over lamination joints and rough spots. It can contain rounded or straight saw marks or a combination of both. Millsawn is not a flat surface and can be uneven in some places. This isn't considered a defect, but rather a part of the Millsawn texture.



Random Handplaned

## Random Handplaned Texture

Random Handplaned texture with its irregular handplaning scrapes adds a distinctly rustic touch. It is used mainly on tops but can be applied to any flat surface.



Windswept

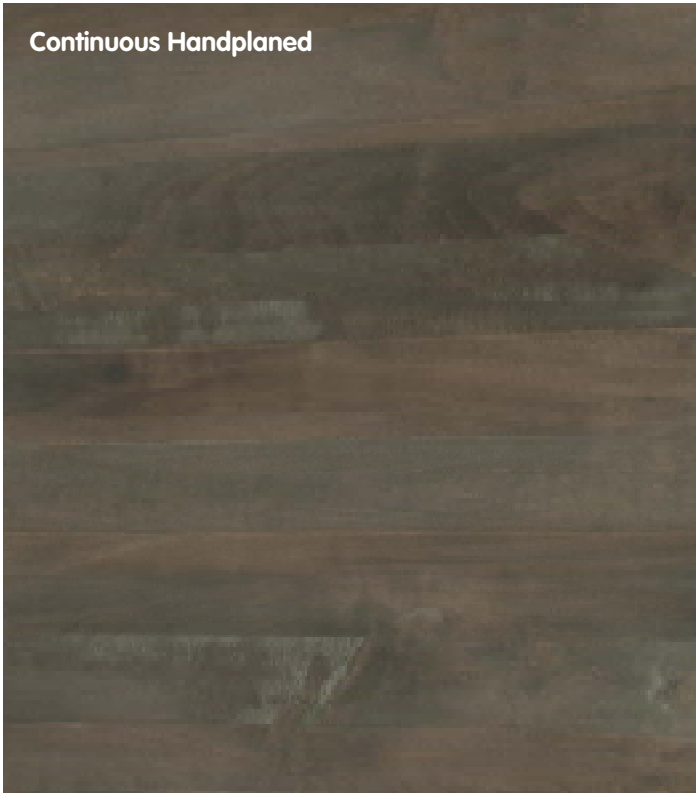
## Windswept Texture

Windswept texture makes new wood appear to be worn and weathered from years of exposure to the elements, imitating wind-worn barn boards. Windswept Texture can be done on any flat surface.

# Textures

## Vintage Texture

Vintage texture is machine planed with some sanding done. It is smoother but will have some slight texturing scattered throughout the surfaces.



## Continuous Handplaned Texture

Continuous Handplaned texture is a handplaning scrape from one end of the panel to the other in one continuous line. These scrapes are spaced out on the width of the panel as seen in picture, leaving a space between each scrape.



## Sawmarks Texture

Sawmarks are smaller rounded sawmarks, applied in a continuous uniform pattern. This texture makes a "rippled" surface with a rustic texture and feel, but unlike the millsawn texture, it is applied after the top is evened so it has a flat surface.

The standard texture for each bedroom or dining set is specified on each page.  
On most of our products we can customize to the texture of your choice from the list above.

# The "A" Series Beaded Bedroom Set



Texture: Smooth Sanded with Beading  
Standard Pulls: Wooden Knobs

**A A50** - Armoire  
2 Adjustable Shelves  
35"W x 24"D x 72"H

**B A10** - Nightstand  
24"W x 19"D x 28"H

**C 60HRA** - Queen Heavy "A" Series Bed  
Head 56"H Foot 30"H  
**78HRA** - King Bed  
**54HRA** - Double Bed  
**39HRA** - Single Bed

**D A15** - 5 Drawer Chest  
37"W x 19"D x 50"H

**E A17** - 7 Drawer Dresser  
62"W x 19"D x 35"H

**F AM90** - Landscape Mirror  
40"W x 36"H



**A60** - Blanket Box  
36½"W x 20½"D x 22"H



**A25** - 5 Drawer Lingerie  
24"W x 19"D x 50"H



**A13** - 3 Drawer Nightstand  
24"W x 19"D x 28"H

# THE Backwoods **BEDROOM**



**#BWMIR**  
Landscape Mirror  
41"Wx35"H



**#BWHBOY - 4 DRAWER HIBOY**  
18"D x 28"W x 47"H  
**#BWHBOY5 - 5 DRAWER HIBOY**  
18"D x 28"W x 57¾"H

**#60BW - PANEL BED**  
Headboard 56"H,  
Footboard 24"H



**#BWNS1 - 1 DRAWER  
OPEN NIGHTSTAND**  
18"D x 19"W x 25½"H

**#BWDR6 - 6 DRAWER DRESSER**  
18"D x 54½"W x 36"H  
**#BWARD - 3 DRAWER ARMOIRE**  
22"D x 35"W x 77"H  
2 Adjustable Shelves



**#BWBB - BLANKET BOX**  
18"D x 42"W x 20"H

**#BWNS2 - 2 DRAWER  
NIGHTSTAND**  
18"D x 19"W x 25½"H



**#BWDR8 - 8 DRAWER DRESSER**  
18"D x 58½"W x 47"H



**#BWNS3 - 3 DRAWER  
NIGHTSTAND**  
18"D x 19"W x 33"H

# Bevel Top Bedroom Series



Texture: Smooth Sanded  
Standard Pulls: Wood Knobs

**A BVWard** - Bevel Top 2 Piece Wardrobe  
2 Adjustable Shelves  
42"W x 22"D x 79"H

**B BVNS3** - Bevel Top 3 Drawer Nightstand  
30"W x 19"D x 31"H

**C 60BV** - Queen Size Bed  
Head 58"H Foot 22"H  
**78BV** - King Bed  
**54BV** - Double Bed  
**39BV** - Single Bed

**D BVHboy5** - Bevel Top 5 Drawer Hiboy  
36"W x 22"D x 52"H

**E BVDR6** - Bevel Top 6 Drawer Dresser  
64"W x 22"D x 36"H

**F BVMir** - Bevel Top Mirror  
47½"W x 40"H

**BVMir2**  
Mule Chest Mirror  
47½"W x 32½"H



**BVNStand** - Door/Drawer Nightstand  
30"W x 19"D x 31"H



**BVDR9** - 9 Drawer Dresser  
64"W x 22"D x 47"H




**BVBB** - Blanket Box  
with Cedar back & bottom  
46"W x 22"D x 22"H



# Century Bedroom


Texture: Millsawn  
Standard Pulls: H17




**MSWARD - 3 DRAWER ARMOIRE**  
36"W x 75½"H x 22½"D  
2 Adjustable Shelves



**MSMIR - LANDSCAPE MIRROR**  
36"H x 42"W




**MSDR6 - 6 DRAWER DRESSER**  
63"W x 36"H x 18½"D




**78MS - KING SIZE BED**  
Head 57"H x 91"W  
Platform Foot 14"H

**60MS - QUEEN BED - 74"W**  
**54MS - DOUBLE BED - 67"W**  
**39MS - SINGLE BED - 42"W**



**MSNS1 - 1 DRAWER/1 DOOR**  
20"W x 30"H x 18½"D



**MSHB4 - 4 DRAWER HIBOY**  
33"W x 47"H x 18½"D



**MSBB - BLANKET BOX**  
42"W x 20"H x 19"D



**MSNS3 - 3 DRAWER NIGHTSTAND**  
20"W x 30"H x 18½"D

# The Dakota Bedroom Series



Texture: Vintage with Sawmarked Tops  
Standard Pulls: Wooden Knobs

**A RFWard** - 2 Piece Armoire  
41"W x 24"D x 80"H  
2 fixed shelves

**B RFNstand** - Nightstand  
25"W x 19"D x 32"H  
one door, one drawer

**C 60RFP** - Queen Dakota Panel Bed  
Head 48"H Foot 32"H  
**78RFP** - King Bed  
**54RFP** - Double Bed  
**39RFP** - Single Bed

**D RFHboy4** - 4 Drawer Chest  
34"W x 20"D x 47"H

**E RFDr6** - 6 Drawer Dresser  
60"W x 20"D x 36"H

**F RFMirror** - Landscape Mirror  
44"W x 40"H



**RFLin-5** - Dakota  
Lingerie Chest  
24"W x 18"D x 58"H



**RF** - Dakota  
2 Drawer Nightstand  
25"W x 19"D x 26"H



**RF2246-B** - Dakota Blanket Box  
46"W x 22"D x 18"H

# More Dakota Bedroom Pieces



Texture: Vintage with Sawmarked Tops  
Standard Pulls: Wooden Knobs

**A RFMWard** - 2 Piece Mini Armoire  
35"W x 16"D x 65"H

**D RFHboy6** - 6 Drawer Chest  
34"W x 20"D x 58"H

**B RFNST3** - 3 Drawer Nightstand  
25"W x 19"D x 32"H

**E RFDR7** - 7 Drawer Dresser  
64"W x 20"D x 36"H

**C 60RFS** - Queen Sleigh Bed  
Head 48"H Foot 32"H  
**78RFS** - King Bed  
**54RFS** - Double Bed  
**39RFS** - Single Bed

**F RFMirror** - Landscape Mirror  
44"W x 40"H

**New Style Sleigh Bed!**



**More Dakota Beds  
on following pages**



**RFMirror2**  
Mule Chest Mirror  
54"W x 28"H

**RFDR-9** - Dakota 9 Drawer Dresser  
64"W x 20"D x 47"H

# Dakota Beds

Texture: Vintage with Sawmarked Tops  
Standard Pulls: Wood Knobs



**60RFX** - Dakota Platform Bed  
60"H Head, 16"H Foot  
King, Queen and Double beds have  
3 drawers each side. Single bed has  
drawers on one side only.

*Also available with low footboard  
on each end.*



**60RFT** - Dakota Shaker Bed  
Head 56"H, Foot 31"H



**60RF** - Queen Dakota Slat Bed  
47" Head, 31" Foot  
**78RF** - King Bed  
**54RF** - Double Bed  
**39RF** - Single Bed

# Dakota Bunk & Loft Beds

Texture: Vintage with Sawmarked Tops  
Standard Pulls: Wood Knobs



**39RFL** - Dakota Loft Bed,  
82"W x 43"D x 80"H  
Includes ladder, safety rail,  
posture board, 54½" to  
bottom of siderail



**54RFBunk**  
Single over Double  
Dakota Bunk Beds  
80" High  
Also Single over Single or  
Double over Double  
***Now Available in Queen over Queen!!***

# The F4 Series Bedroom Set



Texture: Smooth Sanded  
Standard Pulls: Wooden Knobs

**A 100** - Armoire  
39"W x 22"D x 72"H  
2 Adjustable Shelves

**B 401** - Nightstand  
24"W x 19"D x 26"H

**C 512** - Queen Iron Bed  
Head 53"H Foot 33"H  
**511** - King Bed  
**513** - Double Bed  
**514** - Single Bed

**D 203** - 4 Drawer Split Chest  
36"W x 19"D x 46"H

**E 209** - 7 Drawer Dresser  
67"W x 19"D x 35"H

**F 302** - Iron Mirror  
40"W x 41"H



**102** - F4 Crown Top  
2 Door Armoire  
42"W x 22"D x 69"H  
Hanger Bar & 2 Adjustable Shelves



**206** - F4 6 Drawer Dresser  
67"W x 19"D x 35"H



**107** - F4 Curve Top  
1 Drawer Armoire  
40"W x 22"D x 72"H  
Hanger Bar & 2 Adjustable Shelves

**300**

F4 Curved Mirror  
40"W x 43"H

# More F4 Series Bedroom Pieces



Texture: Smooth Sanded  
Standard Pulls: Wooden Knobs

**A** 101 - F4 Crown Top  
4 Door Armoire  
42"W x 22"D x 69"H  
3 Adjustable Shelves

**B** 400 - 2 Drawer Nightstand  
24"W x 19"D x 26"H



**600** - F4 Blanket Box  
43"W x 19"D x 18"H

**C** 501 - F4 Sleigh Bed  
Head 49"H Foot 32"H  
500 - King Bed  
502 - Double Bed  
503 - Single Bed

**D** 204 - 5 Drawer Chest  
36"W x 19"D x 55"H

**E** 207 - 8 Drawer Dresser  
67"W x 19"D x 35"H

**F** 305 - Wing Mirror  
59"W x 43"H



**200** - F4 3 Drawer Chest  
36"W x 19"D x 36"H



**201** - F4 3 Drawer Split Chest  
36"W x 19"D x 36"H



**202** - F4 4 Drawer Chest  
36"W x 19"D x 46"H

# Gatineau Bedroom



Texture: Millsawn  
Standard Pulls: Gatineau Pull

**A GTHB4** - 4 Drawer Highboy  
19"D x 34 1/4"W x 44 1/2"H

**B GTNS3** - 3 Drawer Nightstand  
17"D x 22 1/2"W x 30"H

**C 60GT** - Queen Bed  
Headboard 56"H Footboard 22"H

**D GTNST** - 1 Drawer 1 Door Nightstand  
17"D x 22 1/2"W x 30"H

**E GTDR7** - 7 Drawer Dresser  
19"D x 64"W x 35"H

**F GTMirror** - Mirror  
43"W x 35"H



**GTWARD**- 2 Drawer 2 Door Wardrobe  
22"D x 40"W x 73"H



# The Harvest Bedroom Series



Texture: Smooth Sanded, With Grooved Gables  
 Standard Pulls: Harvest Cup Pulls  
 Plain Gables available on special request

**A S927** - Armoire  
 43"W x 24"D x 74"H  
 2 Adjustable Shelves

**B S931** - 2 Drawer Nightstand  
 24"W x 19"D x 25"H

**C S921** - Queen Harvest Bed  
 Head 54"H Foot 35"H  
**S920** - King Bed  
**S922** - Double Bed  
**S923** - Single Bed

**D S929** - 6 Drawer Chest  
 37½"W x 19½"D x 51"H

**E S926** - 7 Drawer Dresser  
 67"W x 19½"D x 36½"H

**F S928** - Landscape Mirror  
 43"W x 44"H

**S925** - Harvest  
 Door/Drawer Nightstand  
 24"W x 19"D x 31"H



**S932** - Harvest 9 Drawer Dresser  
 67"W x 19½"D x 46"H



**S924** - Harvest  
 3 Drawer Nightstand  
 24"W x 19"D x 31"H



**S930** - Harvest Blanket Box  
 43"W x 19"D x 18"H

# Homestead Bedroom



Texture: Sawmarks All Over  
Standard Pulls: Robinson Pulls

**A HSHB4** - 4 Drawer Highboy  
19"D x 34"W x 43"H

**B HSNST** - 1 Drawer 1 Door Nightstand  
17"D x 25"W x 28 1/2"H

**C 60HS** - Queen Bed  
Headboard 50"H Footboard 22"H

**D HSNS3** - 3 Drawer Nightstand  
17"D x 25"W x 28 1/2"H

**E HSDR6** - 6 Drawer Dresser  
19"D x 60"W x 33"H

**F HSMirror** - Landscape Mirror  
44 3/8"W x 37 7/8" High



*Detail of Homestead Units*

# Kennaway Bedroom

Texture: Smooth  
Standard Pulls: Silver Knobs

**K90**  
Mirror  
42½"H x 34"W



**K26**  
6 Drawer Dresser  
54"W x 19"D x 30"H



**K9**  
1 Drawer Nightstand  
22"W x 17"D x 26"H



**K13**  
3 Drawer Nightstand  
22"W x 17"D x 26"H



**K16**  
7 Drawer Chest  
38"W x 19"D x 52"H



**K11**  
11 Drawer Chest  
64"W x 19"D x 56"H

# Kennaway Bedroom

Texture: Smooth  
Standard Pulls: Silver Knobs



Kennaway Panel Bed  
Head 46"H Foot 26"H  
**K78B** - King Bed  
**K60B** - Queen Bed  
**K54B** - Double Bed  
**K39B** - Single Bed



**K17**  
7 Drawer Dresser  
64"W x 19"D x 35"H



**K10**  
1 Drawer / 1 Door  
Night Stand  
24"W x 19"D x 30"H



**K14**  
4 Drawer Chest  
38"W x 19"D x 30"H



**K15**  
6 Drawer Chest  
38"W x 19"D x 45"H

# Kenora Bedroom



Texture: Millsawn  
Standard Pulls: Warehouse Pull

- A KNHB4** - 4 Drawer Hiboy  
31"W x 19"D x 44 "H
- B KNNS2** - 2 Drawer  
Nightstand  
22"W x 17"D x 25½"H
- C 60KNC** - Queen Condo Bed with 4 Drawers  
60" Head/16" Platform  
Also Available  
**78KNC** - King Condo Bed with 4 Drawers  
**54KNC** - Double Condo Bed with 4 Drawers  
**39KL** - Single Condo Bed with 3 Drawers
- D KNMIR** - Landscape Mirror  
38"H x 41½"W
- E KNDR6** - 6 Drawer Dresser  
18"D x 54"W x 36"H



*Flat Front and Gable Option*

# Kenora Bedroom



Texture: Millsawn  
Standard Pulls: Warehouse Pull

**A KNHB5** - 5 Drawer Hiboy  
34½"W x 18"D x 52"H

**B KNNST** - 1 Door /1 Drawer  
Nightstand  
22"W x 18"D x 31½"H

**C 60KN** - Queen Bed  
60" Head  
33" Foot  
Also Available  
**78KN** - King Bed  
**54KN** - Double Bed  
**39KN** - Single Bed

**D KNNS3** - 3 Drawer Nightstand  
22"W x 18"D x 31½"H

**E KNDR9** - 9 Drawer Dresser  
63"W x 18"D x 44"H



*Close Up of Metal Detail*

# The Klondike Bedroom



Texture: Millsawn  
Standard Pulls: Backwood Pulls

**A KLHB6** - 6 Drawer Hiboy  
31"W x 19"D x 51"H

**B KLNS3** - 3 Drawer  
Nightstand  
22"W x 17"D x 31"H

**C 60KL** - Queen Bed  
Head 56½"H  
Foot 22"H  
Also Available  
**78KL** - King Bed  
**54KL** - Double Bed  
**39KL** - Single Bed

**D KLDR7** - 7 Drawer Dresser  
57"W x 19"D x 36"H

**E KLMir** - Mirror  
42"W x 35"H



**KLHB4** - 4 Drawer Hiboy  
31"W x 19"D x 44"H



**KLNST** - Door Drawer  
Nightstand  
22"W x 17"D x 31"H

# The Lakeshore Collection



*Inspired by the cool breezes blowing off the water, the simple weathered charm of our new Lakeshore Collection captures the essence of the outdoors to grace your home or cottage year-round*

Texture: Windswept  
Standard Pulls: Rustic Iron

**A #LSNST** - Door/Drawer Nightstand  
17"D x 22"W x 30"H

**D #LSDR6** - 6 Drawer Dresser  
19"D x 57"W x 36"H

**B #60LS** - Bed  
Headboard 52"H, Footboard 22"H

**E #LSMir** - Landscape Mirror  
42"W x 34"H

**C #LSWard** - 3 Drawer Wardrobe  
23"D x 38"W x 74"H  
2 Adjustable Shelves

**#LSMir-2** - Mule Mirror  
42"W x 28"H



**LSHBOY4** - 4 Drawer Hiboy  
19"D x 31"W x 46"H



**#LSBOX** - Blanket Box  
21"D x 42"W x 19"H



**LSNST3** - 3 Drawer  
Nightstand  
17"D x 22"W x 30"H



**#LSDR8** - 8 Drawer Dresser  
19"D x 61"W x 45"H



# The Nith River Bedroom



Texture: Vintage with Random Handplaned Tops  
Standard Pulls: Wooden Knobs

**A RSTWard** - Armoire  
35"W x 21"D x 68"H  
2 fixed shelves

**B RSTNS3** - 3 Drawer Nightstand  
17"D x 26"W x 30"H

**C 60RSTS** - Rustic Sleigh Bed  
Head 49"H Foot 34"H  
**78RSTS** - King Bed  
**54RSTS** - Double Bed  
**39RSTS** - Single Bed

**D RSTHboy6** - 6 Drawer Chest  
36"W x 19"D x 52"H

**E RSTDR7** - 7 Drawer Dresser  
64"W x 19"D x 36"H

**F RSTM** - Landscape Mirror  
44"W x 40"H



**RSTBBOX** - Blanket Box  
42"W x 18"D x 19"H



**RSTLIN5**  
5 Drawer Lingerie Chest  
20"W x 16"D x 55"H

# More Nith River Bedroom Pieces



Texture: Vintage with Random Handplaned Tops  
Standard Pulls: Wooden Knobs

**A RSTDR54-6** - 6 Drawer Dresser  
19"D x 54"W x 36"H

**D RSTHBOY-4** - 4 Drawer Highboy  
19"D x 30"W x 43"H

**B RSTNSTAND** - Door/Drawer Nightstand  
16"D x 20"W x 32"H

**C 60BD** - Queen Barn Door Bed  
60" Head, 22" Foot  
**78BD** - King Bed  
**54BD** - Double Bed  
**39BD** - Single Bed



**RSTDR64-9** - 9 Drawer Dresser  
64"W x 19"D x 46"H

# The Rideau Bedroom Set



Texture: Smooth Sanded  
 Standard Pulls: Brass Hardware as shown  
 Foot Type on Case Goods: Bun Foot or Bracket Foot, Please Specify

**A R909** - Curved Armoire  
 43"W x 24"D x 75"H  
 2 Adjustable Shelves

**B R905** - 3 Drawer Nightstand  
 24"W x 18"D x 29"H

**C R901** - Queen Curved Rideau Bed  
 Head 54"H Foot 34"H  
**R900** - King Bed  
**R902** - Double Bed  
 Not Available in Single Size

**D R904** - 6 Drawer Chest  
 36"W x 19"D x 48"H

**E R903** - 7 Drawer Dresser  
 67"W x 19"D x 37"H

**F R906** - Wing Mirror  
 65"W x 43"H



**R921** - Door/Drawer Nightstand  
 24"W x 18"D x 29"H



**R922** - 9-Drawer Dresser  
 67"W x 19"D x 47"H



**R916** - Blanket Box  
 43"W x 19"D x 18"H

# More Rideau Bedroom Pieces



Texture: Smooth Sanded  
 Standard Pulls: Brass Hardware as shown  
 Foot Type on Case Goods: Bun Foot or Bracket Foot, Please Specify

**A R907** - Ladies Chest  
 43"W x 19"D x 56"H

**E R903** - 7 Drawer Dresser  
 67"W x 19"D x 37"H

**B R905** - 3 Drawer Nightstand  
 24"W x 18"D x 29"H

**F R913** - Crown Mirror  
 44"W x 43"H

**C R911** - Queen Rideau Sleigh Bed  
 Head 49"H Foot 32"H  
 R910 - King Bed  
 R912 - Double Bed  
 Not available in Single Size

**D R904** - 6 Drawer Chest  
 36"W x 19"D x 48"H



**R914** - Rideau 4 Drawer Chest  
 36"W x 18"D x 40"H



**R908** - Rideau Lingerie Chest  
 24"W x 19"D x 48"H



**R915** - Rideau Crown Top Armoire  
 43"W x 24"D x 75"H  
 2 Adjustable Shelves

# Warehouse Bedroom

Texture: Millsawn  
Standard Pulls: Warehouse Pull



**60W**  
Queen Bed  
Headboard 52"H, Footboard 22"H  
**78W** - King Bed  
**54W** - Double Bed  
**39W** - Single Bed



**W10**  
1 Drawer Open Night Stand  
18"W x 18"D x 24"H



**W15**  
5 Drawer Chest  
32"W x 19"D x 44"H



**W12**  
2 Drawer Nightstand  
18"W x 18"D x 24"H



**W90**  
Mirror  
40"W x 38"H



**W17**  
6 Drawer Dresser  
60"W x 19"D x 36"H

# Live Edge WATERFALL BEDROOM

**#60WF** - Queen Bed  
Headboard 52"H, Footboard 22"H  
**78WF** - King Bed  
**54WF** - Double Bed  
**39WF** - Single Bed

**#WFWARD**  
2 Drawer Wardrobe  
23"D x 35½"W x 74"H  
2 Adjustable Shelves



**#WFMIR** - Framed  
Mirror 44"W x 36"H



**#WFNST1**  
1 Drawer Nightstand  
17"D x 19½"W x 28"H



**#WFNST2**  
2 Drawer Nightstand  
17"D x 19½"W x 28"H



**#WFDR6** - 6 Drawer Dresser  
19"D x 54"W x 36"H

The continuous grain and live edge flows across the top then down the sides of this trendy set, hence the name "Waterfall".

# *Live Edge* WATERFALL BEDROOM



**#WFDR9** - 9 Drawer Dresser  
19"D x 54"W x 46"H



**#WFHBOY4** - 4 Drawer Hi-boy  
19"D x 28½"W x 46"H



**#WFBOX** - Blanket Box  
20"D x 42"W x 20"H

The continuous grain and live edge flows across the top then down the sides of this trendy set, hence the name "Waterfall".

# Yukon Turnbuckle Bedroom Series



Texture: Saw Marks all over  
Standard Pulls: Rustic Iron Pulls

- A** 60YT - Queen Yukon Bed  
Head 60"H Foot 22"H  
78YT - King Bed  
54YT - Double Bed  
39YT - Single Bed

- D** YTMIR-2 - Mule Mirror  
47½"W x 33½"H

- E** YTNS2 - 2 Drawer Nightstand  
28"W x 19½"D x 32"H

- B** YTHBOY4 - 4 Drawer Hilboy  
40"W x 19½"D x 52½"H

- C** YTDR9 - 9 Drawer Dresser  
56"W x 19½"D x 46"H



**YTBB** - Blanket Box  
46"W x 20"D x 22"H



**YTNS1** - 1 Door Nightstand  
28"W x 19½"D x 32"H



**YTDR6** - 6 Drawer Dresser  
56"W x 19½"D x 38"H

**YTMir** - Landscape Mirror  
48"W x 40"H



**YTWARD** - 2 Piece Wardrobe  
43"W x 25½"D x 80"H

**YTWBOT** - Wardrobe Bottom Only  
43"W x 25½"D x 33"H  
Hanger Bar & 2 Adjustable Shelves



# Power Management For Nightstands

Available As An Add-On On Most Nightstands



# Cottage Slat Beds

Texture: Smooth



## 54SLBunk

Single over Double  
Cottage Bunk Beds  
78" High

Also Single over Single or Double over Double  
**Now Available in Queen over Queen!!**



**60SL** - Cottage Slat Bed  
Head 47", Foot 31"

# Bookcase Beds

Texture: Smooth



**60BC** - Queen  
Basic Bookcase Head Board  
46" High



**60BCS** - Queen Bookcase Head Board  
With Sliding Doors - Head 54"H  
**60LF** - Low Footboard For Complete Bed  
Fits most styles of headboard

# Panel Beds

Texture: Smooth



**60LV** - Queen Louisville Panel Bed  
Head 55", Foot 33"



**60BB** - Bourbon Bed  
Head 52", Foot 30"



**60RPS** - Raised Panel Sleigh Bed  
Head 48", Foot 33"



**60RV** - Queen Revival Panel Bed  
Head 56", Foot 34"



**60RP** - Queen Raised Panel Bed  
Head 52", Foot 30"

# Mission Beds

Texture: Smooth



**60MISS** - Queen  
Mission Spindle Bed  
Head 52", Foot 32"



**60MSPF** - Queen  
Mission Bed with Split  
Footboard  
Head 52", Foot 32"

# Poster Beds

Texture: Smooth



**60CB-35** - Queen  
Cannonball Bed  
Head 52", Foot 40"



**60CR-35** - Queen  
Country Romance Bed  
Head 52", Foot 40"

# Beds Options

Texture: To Match Bed



**DRT** - Roll-away Trundle for under most beds.  
Fits single size mattress.  
9" high clearance inside



**DRUNIT** - 3 Drawer Unit  
To fit under most beds.  
*Shown with Cottage Slat Bed*



**60LF** - Low Footboard to Match  
any Headboard

# Drawers For Beds



**60UC** - Universal Condo Bed  
to match any style headboard  
4 large drawers  
Footboard 15" High  
Includes posture board at 13 $\frac{3}{4}$ " from floor

*Shown with Harvest Headboard  
Texture to Match Headboard*

No Headboard Included



**DRDEEP** - 3 Drawer Unit for 1 Side of Bed  
Large Drawer Space  
16" High  
9" High Drawer Face  
Pull type must be specified

# Entertainment Units

Texture: Smooth Sanded



## A74HTV

Entertainment Unit  
81"H x 74"W x 18"D  
42" TV Console  
Adjustable Shelves

## A74TV

Entertainment Stand Only  
30"H x 74"W x 18"D



## A48TV

Entertainment Stand  
30"H x 48"W x 18"D  
Adjustable Shelf



Also available with glass doors

**S939D** - Deluxe Harvest Entertainment Stand - Smooth  
65"W x 19½"D x 31"H  
Adjustable Shelves



## A60TV

Entertainment Stand  
30"H x 60"W x 18"D

## A53TV

1 Door 2 Drawer Entertainment  
30"H x 53"W x 18"D  
Adjustable Shelves

# Entertainment Stands



**YTENT** - Yukon Entertainment Stand  
Saw Marked Texture  
70"W x 20"D x 30"H  
Fixed Shelves



**YTVCR** - Yukon TV VCR Stand  
Saw Marked Texture  
50"W x 20"D x 30"H



**MSVCR** - 1 Door, 2 Drawer Century TV/VCR Stand  
Millsawn Texture  
48"W x 18"D x 30"H  
1 Adjustable Shelf



**MSENT** - Century Entertainment  
Millsawn Texture  
70"W x 18"D x 30"H  
Adjustable Shelves



# Entertainment Stands



**ZZ1650** - Staggered TV Stand  
Smooth Texture  
16"D x 50"W x 30"H

**RSTBent** - Rustic Bevel Top Entertainment Unit  
Smooth Texture  
64"W x 19½"D x 31 ½"H  
Adjustable Shelves



**BWENT** - Backwoods Entertainment Stand  
Millsawn Texture  
60"W x 18"D x 30"H  
Adjustable Shelves

**KLENT** - Klondike Entertainment  
72"W x 19"D x 30"H  
Millsawn Texture  
Adjustable Shelves



# Dakota Entertainment

Texture: Vintage with Sawmarked Tops  
Standard Pulls: Wood Knobs



**RF48TV** - Dakota TV Stand  
48"W x 19"D x 30"H  
1 adjustable shelf



**RFENT** - Dakota Entertainment Unit  
63"W x 19"D x 30"H  
Door openings 18"W  
2 adjustable shelves each side



**RFENT72** - Dakota Entertainment Unit  
72"W x 19"D x 30"H

# Entertainment Units

Texture: Smooth



**R48TV** - 48" TV Stand  
Smooth Texture  
29"H x 48"W x 17"D  
*Available With Glass Doors*

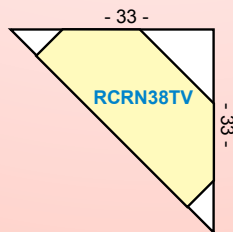


**R53TV** - 53" TV Stand  
29"H x 53"W x 17"D  
*Available With Glass Doors*

**R68TV** - 68" TV Stand  
29"H x 68"W x 17"D  
*Available With Glass Doors*



**RCRN38TV** - Corner TV Stand  
38"W x 29"H x 33" out from corner  
*Available With Glass Doors*



*Also Available:*

**RCRN48TV** - 48" Corner TV Stand  
48"W x 29"H x 40" out from corner  
*Available With Glass Doors*

**RCRN53TV** - 53" Corner TV Stand  
53"W x 29"H x 43" out from corner  
*Available With Glass Doors*

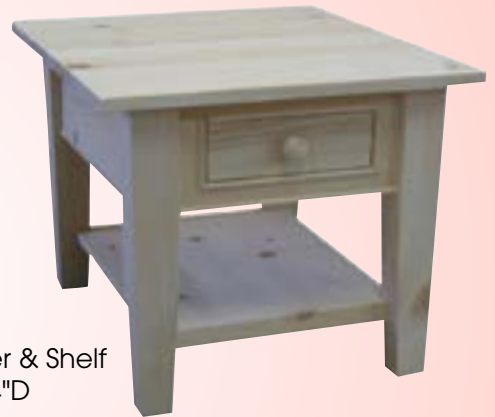
# "A" Series Occasional Tables

Texture: Smooth Sanded with Beading  
Standard Hardware: Wood Knobs



**A1748SD**  
2 Drawer Sofa Table W/Shelf  
30"H x 48"W x 17"D

All available with or without  
shelf and, or drawers



**A2421SD**  
End Table With Drawer & Shelf  
22"H x 21"W x 24"D



**A2448D**  
2 Drawer Coffee Table  
19"H x 48"W x 24"D

# Backwoods & Century Occasional Tables

Texture: Millsawn



**BW2448D**

Backwoods 2 Drawer Coffee Table with Shelf  
18"H x 48"W x 24"D



**BW2424D**

Backwoods End Table  
with Drawer & Shelf  
24"H x 24"W x 24"D



**BW1848D**

Backwoods Sofa Table  
with Drawers & Shelf  
30"H x 48"W x 18"D



**MS2448**

Century Coffee Table  
18"H x 48"W x 24"D



**MS2424**

Century End Table  
24"H x 24"W x 24"D



**MS1848**

Century Sofa Table  
30"H x 48"W x 18"D

# Balustrade and Distillery Occasional Tables

Texture: Continuous Handplaned Tops  
Distillery: Black Powder Coated Steel Pipe Bases



**BAL1660**  
Balustrade Sofa Table  
16"D x 60"W x 30"H



**#DIST-1848** - Sofa Table  
18"D x 48"W x 30"H



**BAL2424** - Balustrade End Table  
Hand-Planed Tops  
24"D x 24"W x 24"H



**#DIST-2424** - End Table  
24"D x 24"W x 24"H



**BAL4060** - Balustrade Coffee Table  
Hand-Planed Tops  
40"D x 60"W x 18"H  
**BAL3248** - 32"D x 48"W x 18"H



**#DIST-2448** - Coffee Table  
24"D x 48"W x 18"H

# Country & Kennaway Occasional Tables

Texture: Smooth Sanded



**T2305**  
Country End Table  
23"W x 23"H x 23"D

*Shown with optional Drawer & Shelf*



**K2421SD**  
Kennaway End Table With  
Shelf & Drawer  
24"W x 21"D x 22"H



**K2448SD**  
Kennaway Coffee Table  
With Shelf & Drawers  
48"W x 24"D x 19"H



**T4605**  
Country Coffee Table  
46"W x 17"H x 22"D

*Available With Shelf And No Drawer,  
Or With One Or Two Drawers*

**T3515**  
Country Coffee Table  
35"W x 17"H x 35"D

*Available With Shelf And None,  
One Or Two Drawers*



**K1748SD**  
Kennaway Sofa Table  
With Shelf & Drawers  
17"W x 48"D x 30"H

# Dakota Occasional Tables

Texture: Vintage with Sawmarked Tops  
Standard Pulls: Wood Knobs



**RF2648-D** - 4 Drawer Coffee Table  
48"W x 24"D x 18"H



**RF3636-S** - 36" x 36" Coffee Table  
w/optional Shelf

*Also available 46" x 46"*



**RF2448P** - Pop-Up Supper Table w/storage box  
48"W x 24"D x 18"H closed, 27"H open



**RF2448PD** - Pop-Up Supper Table w/2 Drawers  
48"W x 24"D x 18"H closed, 27"H open



# Dakota Occasional Tables

Texture: Vintage with Sawmarked Tops  
Standard Pulls: Wood Knobs

Also available with Live Edge Tops

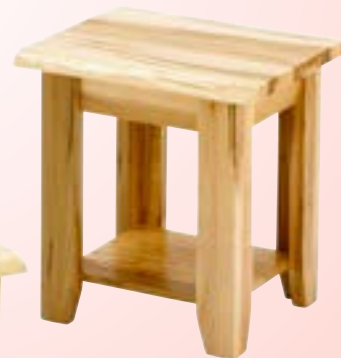
**RF2246-B** - Coffee Table / Box  
46"W x 22"D x 18"H  
*With Lift-up Lid*



**RF1848-S** - Sofa Table with Shelf & Drawer  
48"W x 18"D x 30"H  
*Shown with optional Live Edge Top*



**RF2246-S** - Coffee Table with Shelf  
46"W x 22"D x 18"H  
*Shown with optional Live Edge Top*



**RF2222-S** - End Table with Shelf  
22"W x 22"D x 23"H  
*Shown with optional Live Edge Top*

# Homestead Occasional Tables

Texture: Saw Marks All Over

Also Available with Live Edge Tops

Now with no tenons through Tops



**HS2448**  
Homestead Coffee Table  
48"W x 24"D x 18"H



**HS1848**  
Homestead Sofa Table  
48"W x 18"D x 30"H



**HS2424**  
Homestead End Table  
24"W x 24"D x 24"H

## Console & Nesting Tables

Texture: Smooth



**T113**  
26 x 14 Console Table  
26"W x 30"H x 14"D

**T115**  
32 x 14 Console Table  
32"W x 30"H x 14"D

**T110**  
46 x 14 Console Table  
46"W x 30"H x 14"D

**T180 3 Piece Nest Of Tables**  
Large: 22"W x 22"H x 17"D  
Medium: 17½"W x 18"H x 5¼"D  
Small: 3"W x 15"H x 13"D



# Live Edge Pillar & Laventa Occasional Tables

Texture: Smooth Live Edge  
Laventa Bases: Black Painted Metal



**PE2424** - Pillar End Table  
24"D x 24"W x 24"H



**PS1848** - Pillar Sofa Table  
18"D x 48"W x 30"H



**PC2448** - Pillar Coffee Table  
24"D x 48"W x 18"H



**LVE2424** - Laventa End Table  
24"W x 24"D  
1¾" Thick Tops



**LVS1848** - Laventa Sofa Table  
48"W x 18"D  
1¾" Thick Tops



**LVC4242** - Laventa Coffee Table  
42"W x 42"D  
1¾" Thick Tops

**LVC2448** - Laventa Coffee Table  
(not shown)  
48"W x 24"D  
1¾" Thick Tops

# Millwright and Klondike Occasional Tables

Texture: Millsawn

**KL3248** - Klondike Coffee Table  
32"D x 48"W x 18"H  
Also Available  
**KL2448** - Klondike Coffee Table  
24"D x 48"W x 18"H



**KL1848** - Klondike Sofa Table  
18"D x 48"W x 30"H



**KL2424** - Klondike End Table  
24"D x 24"W x 24"H



**MWC2448** - Millwright Coffee Table  
24"D x 48"W x 18"H  
Also Available

**MWC3248** - Millwright Coffee Table  
32"D x 48"W x 18"H



**MWS1848** - Millwright Sofa Table  
18"D x 48"W x 30"H



**MWE2424** - Millwright End Table  
24"D x 24"W x 24"H

# Nith River Occasional Tables

Texture: Vintage with Random Handplaned Tops  
Standard Pulls: Wood Knobs



**RSTCOFFEE** - Coffee Table  
46"W x 22"D x 18"H



**RSTEND** - End Table  
22"W x 22"D x 22"H



**RSTSOFA** - Sofa Table  
46"W x 18"D x 30"H



**RST2222** - Turned Leg End Table  
22"W x 22"D x 22"H



**RST1846** - Turned Leg Sofa Table  
46"W x 18"D x 30"H



**RST3546** - Chunky Coffee Table  
46"W x 35"D x 18"H  
Not Available With Shelf

# Live Edge Waterfall Collection

Texture: Smooth Sanded  
Standard Pulls: 10" Bar Pull



**WF1848SD** - Sofa Table with Drawers and Shelf  
18"D x 48"W x 30"H



**WF2424S** - End Table with Shelf  
24"D x 24"W x 24"H



**WF2424D** - End Table  
with Drawer  
24"D x 24"W x 24"H



**WF2448D** - Coffee Table with Drawers  
24"D x 48"W x 18"H



**WF2448S** - Coffee Table with Shelf  
24"D x 48"W x 18"H

# Yukon Turnbuckle Occasional Tables

Texture: Saw Marks all over  
Standard Hardware: Rustic Iron Pulls



**YTS1848D** - Yukon Sofa Table with 2 Drawers  
18"D x 48"W x 30"H



Yukon Pop Up Table  
24"D x 48"W x 18" Closed  
27"H Open  
False Fronts



**YTC2448D** - Yukon Coffee Table with 2 Drawers  
24"D x 48"W x 18"H



**YTE2424D** - Yukon End Table with Drawer  
24"D x 24"W x 22"H



**YTS1848** - Yukon Sofa Table  
48"W x 18"D x 30"H



**YTE2424** - Yukon End Table  
24"W x 24"D x 22"H



**YTC2448** - Yukon Coffee Table  
48"W x 24"D x 18"H

**Substitute wood shelf for turnbuckle on any Yukon table**  
**Also Available with 1¾" Live Edge Tops**

# "A" Series Office Desks

Texture: Smooth Sanded with Beading  
Standard Pulls: Wooden Knobs



**A3272LDH**  
Corner Desk With Hutch  
78"H x 72"W x 32"D  
Return  
30"H x 46"W x 22"D  
**A3272LD**  
Desk Only Option



**A2246DH**  
Desk With Hutch  
70"H x 46"W x 22"D  
**A2246D**  
Desk Only Option



**AL2D**  
2 Drawer Lateral Filing Cabinet  
31 3/4"H x 30"W x 20"D



**A3272DH**  
Desk With Hutch  
78"H x 72"W x 32"D  
**A3272D**  
Desk Only Option



**A2D**  
2 Drawer Filing Cabinet  
31 3/4"H x 22"W x 24"D

**A3D**  
3 Drawer Filing Cabinet  
45"H x 22"W x 24"D

**A4D**  
4 Drawer Filing Cabinet  
58"H x 22"W x 24"D



# Bevel Top Office

Texture: Smooth Sanded  
Standard Pulls: Wood Knobs



## **BVFC4**

Bevel Top 4 Drawer Filing Cabinet  
25"W x 25"D x 50"H

*Also available in 3 Drawer or 2 Drawer*



## **BVDesk**

Bevel Top Executive Desk  
76"W x 28"D x 30"H

*Shown with*

## **BVHutch**

Bevel Top Executive Hutch  
76"W x 12"D x 48"H

*Also Available*

## **BVSDesk**

Bevel Top Desk with Drawers  
1 side only  
58"W x 28"D x 30"H



**BV366** - Bevel Top Bookcase with Doors,  
Adjustable Shelves  
36"W body x 12"D x 48", 60", 72" or 84"H

# Desks & Filing Cabinets

Texture: Smooth Sanded  
Standard Pulls: Wooden Knobs



**3272LD**  
L-Shaped Desk  
Desk: 72"W x 30"H x 32"D  
Return Desk:  
48"W x 30"H x 24"D  
Raised Panels All Around



**F2D**  
2 Drawer Filing Cabinet  
19"W x 30"H x 28"D

**F3D**  
3 Drawer Filing Cabinet  
19"W x 43"H x 28"D

**F4D**  
4 Drawer Filing Cabinet  
19"W x 53"H x 28"D

Raised Panels All Around



**1940H**  
Desk & Hutch  
Desk: 40"W x 30"H x 19"D  
Hutch: 39"W x 39"H x 10"D

**1940**  
Student Desk Only  
40"W x 30"H x 19"D  
Raised Panel Gables Only



**2860**  
Double Desk  
60"W x 30"H x 28"D  
Raised & Gables and Back

**2450**  
Double Desk  
50"W x 30"H x 24"D  
Raised Panel Gables & Back

# Student Desks



**DK2656T** - Andrews Student Desk with Turned Legs  
Smooth Texture  
56"W x 26"D x 30"H



**DK2656** - Andrews Student Desk  
Smooth Texture  
56"W x 26"D x 30"H



**DK2661F**  
Andrew's Desk with File Drawers  
Smooth Texture  
61"W x 26"D x 30"H



**RFDESK** - Dakota Student Desk  
Vintage with Sawmark Top Texture  
48"W x 24"D x 30"H



**K2246D**  
Kennaway Kid's  
Desk Only  
46"W x 22"D

**K2246DH**  
Kennaway Kid's  
Desk & Hutch  
Smooth Texture

# "A" Series Bookcases & Storage Units

Texture: Smooth Sanded with Beading  
Standard Pulls: Wood Knobs



**A4850**

3 Door Jam Cupboard  
w/ 3 Adjustable Shelves  
48"H x 50"W x 16"D



**A4820**

1 Door Jam Cupboard  
w/3 Adjustable Shelves  
48"H x 20"W x 16"D



**A4836**

2 Door Jam Cupboard  
w/ 3 Adjustable Shelves  
48"H x 36"W x 16"D

**A6050**

3 Door Jam Cupboard  
w/ 3 Adjustable Shelves  
60"H x 50"W x 16"D

**A6020**

1 Door Jam Cupboard  
w/ 3 Adjustable Shelves  
60"H x 20"W x 16"D

**A6036**

2 Door Jam Cupboard  
w/ 3 Adjustable Shelves  
60"H x 36"W x 16"D



**A70B - "A" Series**  
Bookshelf With  
Adjustable Shelves  
70"H x 36"W x 14"D

*Also Available*  
48" & 60" High

**A48B**  
48"H x 36"W x 14"D

**A60B**  
60"H x 36"W x 14"D



**A70BD - "A" Series**  
Bookshelf With Doors  
& Adjustable Shelves  
70"H x 36"W x 14"D

# Dakota Bookcases & Storage Units

Texture: Vintage with Sawmarked Tops  
Standard Pulls: Wood Knobs



**RFDD325**  
Dakota Jelly  
Cupboards  
22" or 32"W x 12"D  
3', 4', 5', 6' or 7' Tall



**RFBC365**  
Dakota Bookcases  
22", 36", or 48"W x 12"D  
3', 4', 5', 6' or 7' Tall



**RFSD175**  
Dakota Jam Cupboards  
12"D x 17"W x 36" to 84" Tall



**RFBC** - Dakota Wide Bookcases  
12"D x 60", 72" or 84"W, 36" to 72" Tall



**RFShelf**  
28" or 40"W, 78"H

# Farmhouse Bookcases & Storage Units

Texture: Smooth Sanded  
Standard Pulls: Wood Knobs

**D20**  
Chimney Cupboard  
20" W x 60"H x 16"D



**603**  
F4 Jam Cupboard  
24"W x 72"H" x 18"D

**602**  
F4 Jam Cupboard  
24"W x 60"H x 18"D

**601**  
F4 Jam Cupboard  
24"W x 48"H x 18"D



**D51**  
3 Door Jam Cupboard  
51"W x 60"H x 16"D

**D34**  
2 Door Jam Cupboard  
34"W" x 60"H x 16"D



F4 Bookshelf  
36"Wide x 14"Deep  
**706** - 48" High  
**707** - 60" High  
**709** - 72" High



# JFB Bookcases & Storage Units

Texture: Smooth

Now with plywood backing instead of V match



**R6020** - 1 Door  
Jam Cupboard  
60"H x 20"W x 12"D  
3 Shelves



**R6036** - 2 Door  
Jam Cupboard  
60"H x 36"W x 12"D  
3 Shelves



**R6050** - 3 Door  
Jam Cupboard  
60"H x 50"W x 12"D  
3 Shelves



**R6044** - Bookshelf  
13½"D x 44"W x 60"H  
4 Adjustable Shelves

**R3644** - Bookshelf  
13½"D x 44"W x 36"H  
2 Adjustable Shelves

**R4844** - Bookshelf  
13½"D x 44"W x 48"H  
3 Adjustable Shelves



**R7044** - Bookshelf  
13½"D x 44"W x 70"H  
4 Adjustable Shelves  
Top Shelf Fixed

# Rustic Bookcases & Storage Units

Texture: Vintage  
Standard Pulls: Wood Knobs

Adjustable shelves available upon request



**SD12175** - Jam Cupboard  
17"W x 12" or 18"D x 60"H  
3', 4', 5', 6', or 7' Tall



**DD12325** - Jelly Cupboard  
22" or 32" W x 12" or 18"D x 60"H  
3', 4', 5', 6', or 7' Tall



**SB12326** - Split Bookcase with Crown  
24" or 32"W x 12"D  
4', 5', 6', or 7' Tall



**BC12365** - Bookcase  
22", 36" or 48"W x 12" or 18"D  
3', 4', 5', 6', or 7' Tall



**BC12723** - Rustic Wide Bookcases  
12"D x 60", 72" or 84"W, 36" to 72" Tall



# Book Cases & Storage Units

Texture: Smooth Sanded



**CS48** - Cubby Shelf  
48"W x 12"D x 18"H



**CB48** - Cubby Bench  
48"W x 16"D x 21"H



**ZZ366** - Staggered Bookshelf - Smooth  
12"D x 36" or 48"W  
36" to 84" tall finished  
Both sides are finished  
Can be used as a room divider



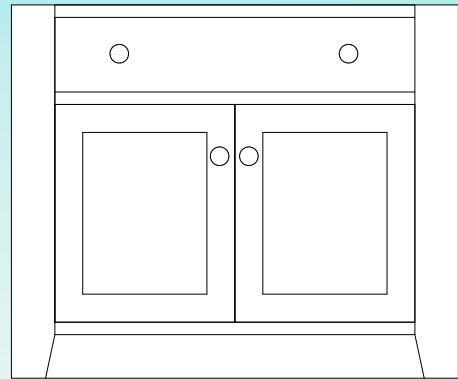
**AC2460** - Accent Shelf  
12"D x 24"W x 36" to 84"H

# Vanities

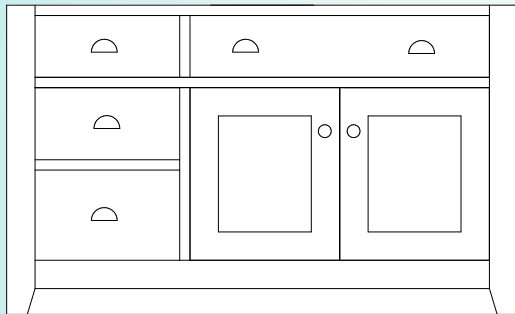
Harvest Smooth Texture  
Dakota Vintage Texture



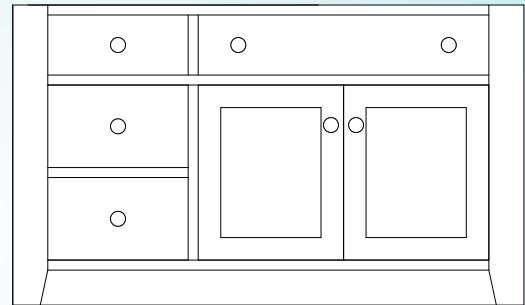
**S345V** - Harvest 2 Door Vanity  
21"D x 34"W x 30"H



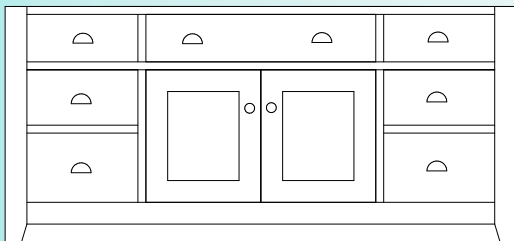
**RFV36** - Dakota 2 Door Vanity  
21"D x 36"W x 30"H



**S495V** - Harvest 2 Door  
3 Drawer Vanity  
21"D x 49"W x 30"H



**RFV51** - Dakota 2 Door  
3 Drawer Vanity  
21"D x 51"W x 30"H



**S345V** - Harvest 2 Door  
6 Drawer Vanity  
21"D x 64"W x 30"H



**RFV66** - Dakota 2 Door  
6 Drawer Vanity  
21"D x 66"W x 30"H

# "A" Series Sideboards

Texture: Smooth Sanded with Beading  
Standard Pulls: Wood Knobs



## **A38SDHG**

38" Sideboard With Glass  
Door Hutch  
84"H x 38"W x 18"D

## **A48SDHG**

48" Sideboard With Glass  
Door Hutch  
84"H x 48"W x 18"D

## **A38SD**

38" Sideboard With 2 Drawers & Doors  
34"H x 38"W x 18"D

## **A48SD**

48" Sideboard With 2 Drawers & Doors  
34"H x 48"W x 18"D



## **A53SDHG**

53" Sideboard With Glass  
Door Hutch  
84"H x 53"W x 18"D

## **A68SDHG**

68" Sideboard With Glass  
Door Hutch  
84"H x 68"W x 18"D

## **A53SD**

53" Sideboard With 3 Drawers & Doors  
34"H x 53"W x 18"D

## **A68SD**

68" Sideboard With 3 Drawers & Doors  
34"H x 68"W x 18"D

# "A" Series Sideboards & Corner Units

Texture: Smooth Sanded with Beading  
Standard Pulls: Wood Knobs



**AR32C**  
Mini Corner Unit  
77"H x 32"W x 16"D



**A60S**  
60" Sideboard With Glass Doors  
46"H x 60"W x 18"D



**A52S**  
52" Sideboard With Glass Doors  
46"H x 52"W x 18"D



**AR40C**  
Corner Unit  
77"H x 40"W x 18"D



**A42S**  
42" Sideboard With Glass Doors  
46"H x 42"W x 18"D

# Harvest Sideboard & Hutches & Buffets

Texture: Smooth  
Standard Pulls: Harvest Cup Pulls and Knobs



- S934** - Harvest 3 Door Hutch & Buffet - 60"W x 22"D x 80"H
- S935** - 3 Door Buffet Only - 60"W x 22"D x 36"H
- S936** - 4 Door Hutch & Buffet - 77"W x 22"D x 80"H
- S937** - 4 Door Buffet Only - 77"W x 22"D x 36"H
- S940** - 2 Door Hutch & Buffet - 42"W x 22"D x 80"H
- S941** - 2 Door Buffet Only - 42"W x 22"D x 36"H

**S938D** - Deluxe Harvest Sideboard  
67"W x 19½"D x 40"H



## JFB Rustic Sideboards

Texture: Smooth  
Standard Pulls: Wood Knobs



**RH54S**  
Sideboard With Glass Doors  
46"H x 54"W x 18"D

**RH44S**  
Sideboard With Glass Doors  
46"H x 44"W x 18"D



**RH62S**  
Sideboard With Glass Doors  
46"H x 62"W x 18"D

# JFB Rustic Sideboards

Texture: Smooth  
Standard Pulls: Wood Knobs

All Available with Open Hutch or Glass Door Hutch



**RH40SDH** - 40" Sideboard  
With Open Hutch  
82"H x 40"W x 18"D

**RH40SD** - 40"  
Sideboard Only  
34"H x 40"W x 18"D



**RH50SDHG** - 50" Sideboard  
With Glass Door Hutch  
82"H x 50"W x 18"D

**RH50SD** - 50"  
Sideboard Only  
34"H x 50"W x 18"D



**RH55SDH** - 55" Sideboard  
With Open Hutch  
82"H x 55"W x 18"D

**RH55SDH** - 55" Sideboard Only  
34"H x 55"W x 18"D



**RH70SDHG** - 70" Sideboard  
With Glass Door Hutch  
82"H x 70"W x 18"D

**RH70SD** - 70" Sideboard Only  
34"H x 70"W x 18"D

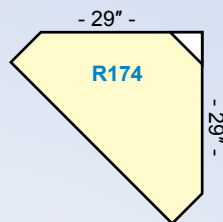
# JFB Rustic Sideboards & Corner Units

Texture: Smooth  
Standard Pulls: Wood Knobs

All Available with Open Hutch or Glass Door Hutch



**R172** - Mini Corner Cabinet  
72"H x 25"W x 21"  
out from corner



**R174** - Corner Cabinet  
72"H x 37"W x 29"  
out from corner



**R53SDHG** - 3 Door / 3 Drawer  
Sideboard With Glass Door Hutch  
82"H x 53"W x 17"D

**R53SD** - Sideboard Only  
With 3 Doors / 3 Drawers  
34"H x 53"W x 17"D

**R68SDHG** - 3 Door / 3 Drawer  
Sideboard With Glass Door Hutch  
82"H x 68"W x 17"D

**R68SD** - Sideboard Only  
34"H x 68"W x 17"D

**R38SDH** - 2 Door / 2 Drawer  
Sideboard With Hutch  
82"H x 38"W x 17"D

**R38SD** - Sideboard Only  
34"H x 38"W x 17"D

**R48SDH** - 2 Door / 2 Drawer  
Sideboard With Hutch  
82"H x 48"W x 17"D

**R48SD** - Sideboard Only  
34"H x 48"W x 17"D



# JFB Rustic Buffets

Texture: Smooth  
Standard Pulls: Wood Knobs  
All Available with Open Hutch



**RB38HG** - 38" Buffet With  
Glass Door Hutch  
83"H x 38"W x 18"D

**RB38** - Buffet Only  
35"H x 38"W x 18"D



**RB48HG** - 48" Buffet With  
Glass Door Hutch  
83"H x 48"W x 18"D

**RB48** - Buffet Only  
35"H x 48"W x 18"D



**RB53HG** - 53" Buffet With Glass Door Hutch  
83"H x 53"W x 18"D

**RB53** - Buffet Only  
35"H x 53"W x 18"D



**RB68HGC** - 68" Buffet With Hutch  
83"H x 68"W x 18"D

**RB68** - Buffet Only  
35"H x 68"W x 18"D



# Table Leg Options



**A** 3½" Turned

**B** 3½" Tapered

**C** 3½" Colonial

**D** 3½" Block

**E** 5½" Block

**F** 5½" Colonial

**G** 5½" Tapered

**H** 5½" Turned

# The Backwoods Trestle Dining Suite



Texture: Millsawn  
Standard Pulls: Backwood Pulls

- A BW426** - Backwoods Table  
42"W x 60" to 120" Long  
Available with 18" End Extensions
- B BWB6** - Backwoods Bench  
16"W x 48" to 96" Long
- C BWSB60** - Backwoods Sideboard  
60"W x 18"D x 40"H
- D 2220** - Ladderback Shaker Side Chair  
18"W x 16½"D x 43"H

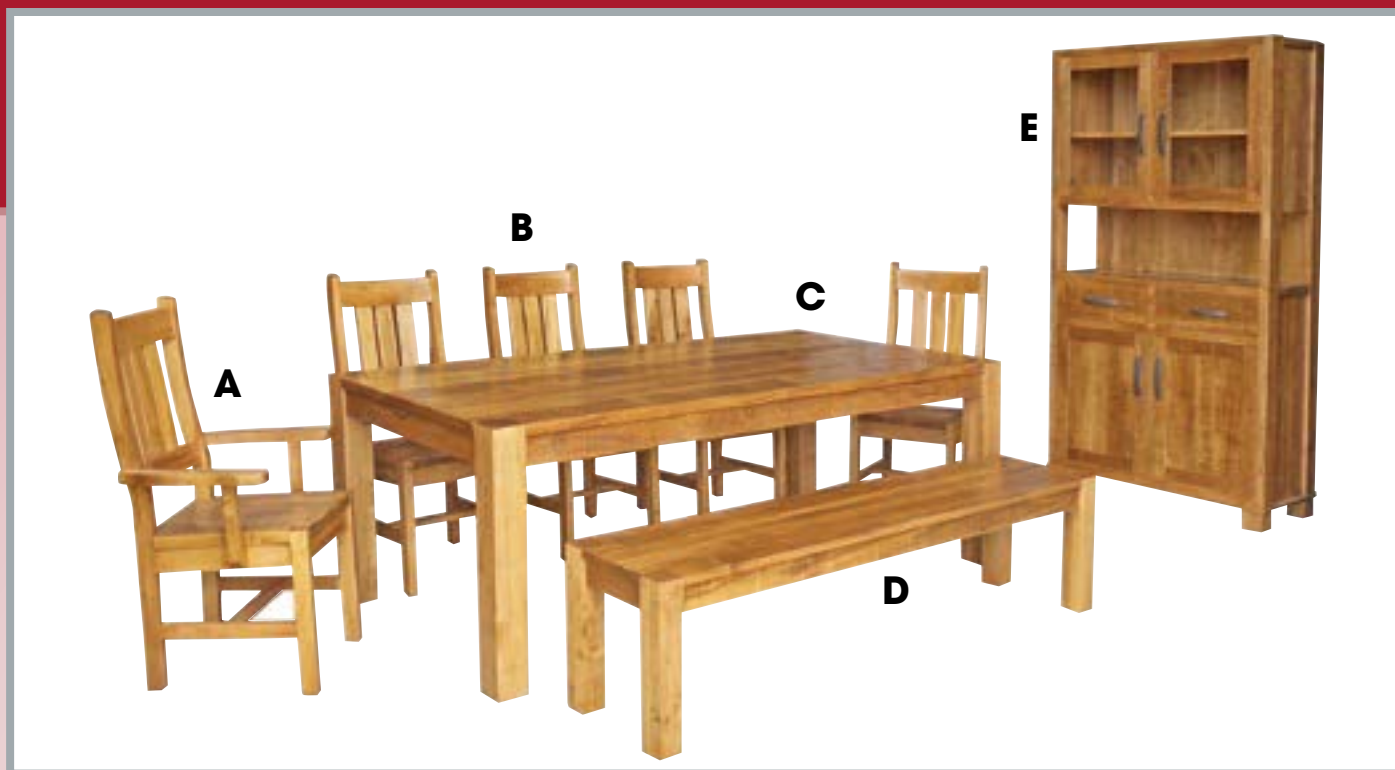


*Optional 18" End Leaf*



*Backwoods Trestle Base*

# The Backwoods Leg Dining Suite



Texture: Millsawn  
Standard Pulls: Backwood Pulls

**A BW30** - Backwoods Arm Chair  
22"W x 21"D x 42"H

**B BW20** - Backwoods Side Chair  
18"W x 21"D x 42"H

**C BWL427** - Backwoods Leg Table  
42 or 48"W x 48 - 120" Long

**D BWBL7** - Backwoods Leg Bench  
16"W x 48 - 108" Long

**E BWSB40HG** - Backwoods 2 Drawer 4 Door,  
One Piece Sideboard with Glass Door Hutch  
18"D x 40½"W x 80"H

Also Available as Sideboard Only **#BWSB40**  
18"D x 40½"W x 40"H



Above Table Shown with  
2-18" End Leaves Inserted

# The Bevel Top Dining Suite



Texture: Smooth  
Standard Pulls: Wood Knobs

**A RSTSV3** - 3 Glass Door Server  
72"W x 19"D x 36"H  
Also 2 door style 52"W

**B RSTC35P**  
35"W x 16"D x 78"H  
Corner Hutch w/Pie Shelf  
**RSTC35L**  
Corner Hutch w/full Length Doors

**C RSTB425** - Bevel Top Table with Dowels  
36" or 42" Wide  
4', 5', 6', 7', 8' or 9' Long  
Also available with turned legs

**D P2114** - Farmhouse Side Chair  
19"W x 19"D x 41"H

**E P3114** - Farmhouse Arm Chair  
21"W x 19"D x 41"H

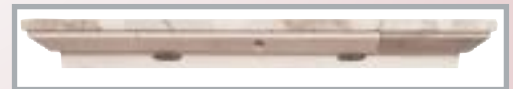
**F RSTB4** - Rustic Bench  
12"D x 18"H  
4', 5', 6', 7' or 8' long



Detail of Table Top



Colonial Leg Option  
for Servers



Available with 18" end leaves

# Bevel Top Dining Pieces

Texture: Smooth  
Standard Pulls: Wood Knobs



**RSTSVH3D** - Bevel Top 5 Drawer Server with Hutch  
72"W x 19"D x 79"H



**RSTSB72** - Bevel Top Tall Sideboard  
72"W x 20"D x 43"H plus 3½" Backsplash



**RBX365** - Bevel Top Extension Table  
36" or 42"W, 48", 60" or 72"L  
Comes with 2 centre leaves. 3rd leaf optional.

# The Bonanza Dining Suite

Texture: Millsawn  
Standard Pulls: Warehouse Pull



**BZX427** - Bonanza Center Extension  
42" or 48" x 60" to 84"L  
Plus 2-12" Center Leaves

**BZ427ST** - Bonanza Solid Top  
42" or 48" x 60" to 108"L

**BZ427** - Bonanza End Extension  
42" or 48" x 60" to 108" Plus 2-16"



**BZX427** - Shown With Center Leaves Inserted



**BZB166** - Bonanza Bench  
16" x 48" to 96"

**BZ30** - Bonanza Arm Chair  
24"W x 39"H



**BZ20** - Bonanza Side Chair  
18"W x 39"H



**BZBUFFET** - Bonanza Buffet  
54"W x 18"D x 36"H

# The Century Leg Dining Suite



Texture: Millsawn  
Standard Pulls: H17

**A MS33** - Upholstered Century Arm Chair  
22"W x 17"D x 43"H

**B MS22** - Upholstered Century Side Chair  
18"W x 17"D x 43"H

**C MSL427ST** - Century Leg Table  
Solid Top with Breadboard Ends  
42 or 48"W x 60 - 120" Long

**D MSLB7** - Century Leg Bench  
14"W x 48 - 108" Long

**E MSSB41HG** - Century 2 Drawer 2 Door Sideboard  
with Glass Door Hutch  
18"D x 41 1/2"W x 84"H (Hutch 13" Deep)

Also Available as Sideboard Only  
#MSSB41 - 18"D x 41 1/2"W x 36"H

*Table & Bench Available with Tapered,  
Turned, Colonial or Block Legs*



**MSL427** - Century Leg Table with  
16" Breadboard Leaves

# Century Pedestal Dining Suite

Texture: Millsawn  
Standard Pulls: H17



**MS426ST** - Century Pedestal Table  
42" Wide x 60" to 120" Long  
Solid Top or with 2-16" Leaves



16" Leaf Inserted



**MSB144** - Century Pedestal Bench  
14"W x 18"H  
48", 60", 72", 84" or 96" Long



**MS48R** - Round Century Pedestal Table  
42" to 60" Diameter  
Now Available with 2-12" Centre Leaves



**MSSB61** - Century Sideboard  
61"W x 18"D x 36"H



**MS20** - Century Slatback  
Side Chair  
20"D x 20"W x 44"H



**MS30** - Century Slatback  
Arm Chair  
20"D x 26"W x 44"H



# More Century Dining Suite

Texture: Millsawn  
Standard Pulls: H17



**MS3642R** - Pub Table  
36"-42" Diameter  
36" or 42" High



**MSI60** - Kitchen Island  
38"D x 60"W x 36"H  
2 Doors Each Side  
1 Drawer One Side



**IPT30** - 30"H Implement Bar Stools  
Smooth Texture

**IPT24** - 24"H Implement Bar Stools



**MSBAR60** - Century Split Level Bar  
60"W x 28"D  
Lower Top 36"H  
Upper Top 42" H  
Millsawn Texture

# East Lakes Kitchen Islands

Texture: Vintage with 2" Dowel Tops  
Standard Pulls: Harvest Cup Pull

Also available with Live Edge Tops



**RFELT**  
East Lakes Side Table  
72"W x 18"D x 36"H



**RFWRACK** - Dakota Wine Rack  
39"W x 14"D x 36"H  
Stores 31 Bottles



**RFELI**  
East Lakes Kitchen Island  
54"W x 36"D x 36"H



**RFELM**  
East Lakes Mini Island  
32"W x 36"D x 36"H  
Drawer on Both Sides

# The Dakota Breakfast Island and Bar Sets

Texture: Vintage with Sawmarked Tops  
Standard Pulls: Wood Knobs

**RFIsland4** - 48"W Dakota Island  
**RFIsland5** - 60"W Dakota Island  
38"D x 36" High with 4 Doors

**RF4124** - 24" Ladderback Bar Chair  
**RF4130** - 30" Ladderback Bar Chair  
18"W x 16"D with back 19"H



**RFBar4** - 48" Dakota Bar  
**RFBar5** - 60" Dakota Bar

**RF4024** - 24" Slat Back Bar Chair  
**RF4030** - 30" Slat Back Bar Chair  
18"W x 16"D with back 19"H

# The Dakota Dining Suite



Texture: Vintage with Sawmarked Tops  
 Standard Pulls: Wood Knobs  
 Chair Textures: Vintage

**A RFHB60** - Hutch & Buffet  
 60"W x 18"D x 80"H  
**RFB60** - Buffet Only  
 18"D x 36"H

**B RFB144** - Bench with Drawer  
 14"W x 18"H  
 36", 48", 60", 72" or 84" long

**C RF20** - Slatback Side Chair  
 20"W x 20"D x 44"H  
 Also available in smaller size  
**RF20S** - Side Chair  
 19"W x 40"H  
**RF30S** - Side Chair  
 25"W x 40"H

**D RF30** - Slatback Arm Chair  
 26"W x 20"D x 44"H

**E RF385** - Dakota Table  
 Standard widths 42" and 46"  
 48", 60", 72", 84", 96", 108" long  
 Also available with turned legs

Example of Dakota Table  
 and 4 Legged Bench with  
 Optional Live Edge

Optional 18" End Extensions



# The Dakota Double Pedestal Dining Suite



Texture: Vintage with Sawmarked Tops  
 Standard Pulls: Wood Knobs  
 Chair Textures: Vintage

- A RF31** - Dakota Ladder Back Arm Chair  
25"W x 21"D x 40"H
- B RF21** - Dakota Ladder Back Side Chair  
19"W x 21"D x 40"H
- C RFC35P** - Dakota Corner Hutch  
with Pie Shelf  
35"W x 18"D x 80"H

- D RFHB60G** - Dakota 3 Drawer, 3 Door Buffet with  
Glass Door Hutch  
60"W x 18"D x 80"H
- RFB60G** - Dakota 3 Drawer-3 Door Buffet Only  
60"W x 18"D x 36"H
- E RFBL7** - Dakota 4 Legged Bench  
14"D x 18"H x 48-96"L
- F RFD427** - Dakota Double Pedestal Table  
42 or 48"W x 60 - 120"L



*Bench also available with  
Turned or Colonial Legs*



*Dakota Double Pedestal Table Shown  
With Optional End Leaves Inserted*

# Saddle Benches

Texture: Vintage

Benches also available with flat seats



**RFSS543**  
Dakota 3 Seat Saddle Bench  
12"W x 18"H x 54" Long



**RFSS724**  
Dakota 4 Seat Saddle Bench  
12"W x 18"H x 72" Long



**RFSS362** - Dakota 2 Seat Saddle Bench  
12"W x 18"H x 36" Long



# Millwright Dining Suite



Texture: Millsawn  
Standard Pull: Millwright Pull

**A MW30** - Arm Chair  
26"W x 20"D x 44"H

**B MW20** - Side Chair  
20"W x 20"D x 44"H

**C MW426** - Dining Table  
42-48"W x 60-120" Long  
optional 16" End Leaves

**D MWSB72** - 2 Door 3 Drawer Sideboard  
19"D x 72"W x 40"H

**E MWB166** - Bench  
16"D x 48-120 Long



*Millwright Table Shown  
With Optional End Leaves Inserted  
Also Available without Metal Inlay in top*

# Homestead Dining Suite



Texture: Saw Marks all over  
Standard Pull: Robinson Pull

**A HS30** - Arm Chair  
24"W x 40"H

**B HS20** - Side Chair  
18"W x 40"H

**C HS426** - Dining Table  
42-48"Wide x 60-120"Long  
12" Overhang on Ends

**D HSSB72** - 2 Glass Door  
4 Drawer Sideboard  
19"D x 72"W x 42"H

**E HSB145** - Bench  
14"D x 48-120"L

**Now with no tenons through tops**



*Detail of Homestead Sideboard*



# Klondike Dining Suite



**Texture: Millsawn**  
**Standard Pull: Backwoods Pull**

**A KL20** - Upholstered Side Chair  
18"W x 40"H

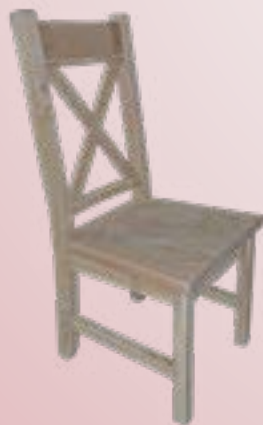
**B KLB5** - Klondike Bench  
16"W x 48" to 96" Long

**C KLSB57** - Klondike 3 Drawer Sideboard  
57"W x 19"D x 40"H

**D KL425ST** - Solid Top Klondike Table  
42" or 48"W x 60" to 120"L

**E KLX426** - Klondike Centre Extension Table  
42" or 48"W x 60" to 84"L  
Plus 2-12" Centre Leaves

**F KL425** - Klondike Table  
42" or 48"W x 60" to 120"L  
with 2-16" Breadboard End Leaves



**KL22** - Klondike Side  
19"W x 40"H  
Millsawn Texture



**KL23** - Klondike Arm  
25"W x 40"H  
Millsawn Texture



**E**



**F**

# Laventa Tables

## Live Edge Tops with Metal Base

Texture: Smooth Sanded  
with Black Painted Base

**LV426** - Laventa Harvest Table  
42" or 48" W x 60", 72", 84", 96", 108" or 120" Long  
1 3/4" Thick Tops



**LV166** - Laventa Bench  
16" W x 48", 60", 72", 84", 96", 108" Long  
1 3/4" Thick Seats

## Distillery Pub Table

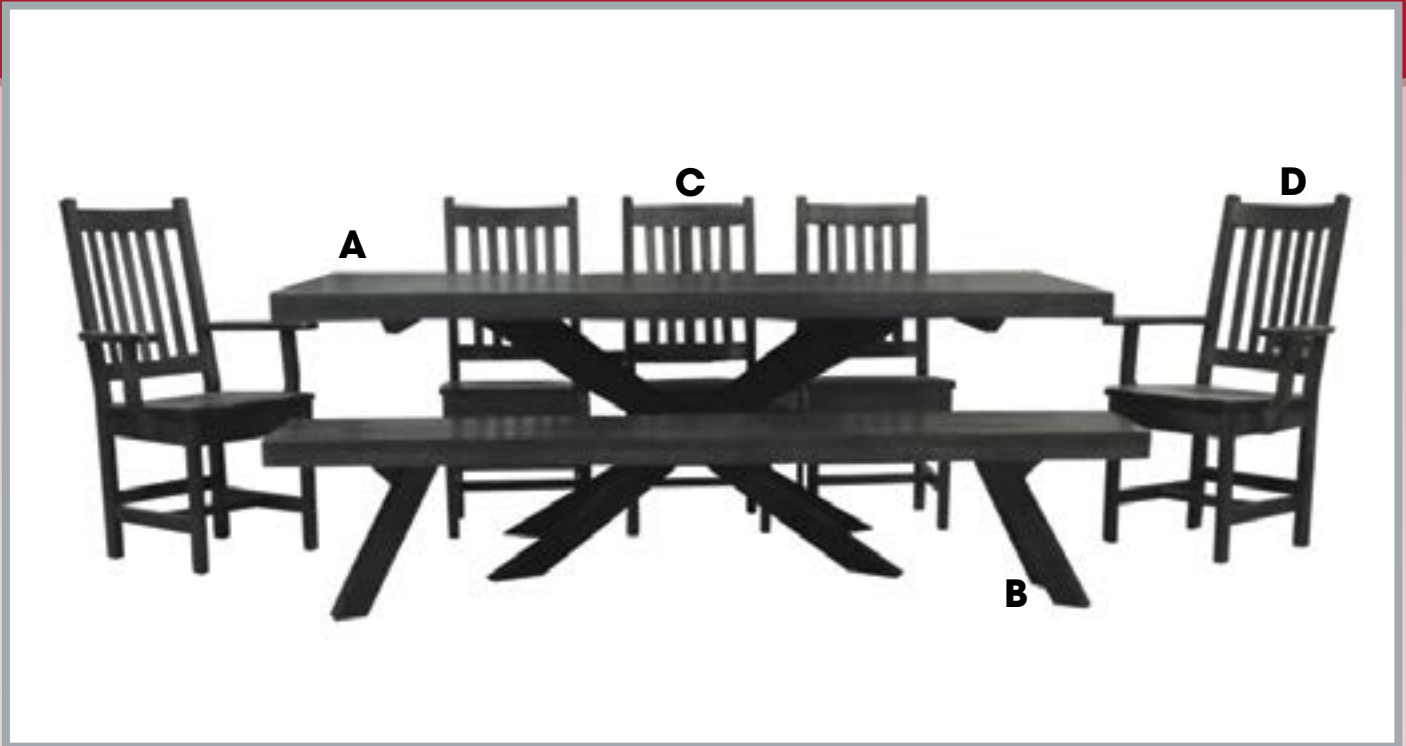
2 3/4" Continuous Handplaned Top

**Dist-Pub** - Pub Table  
24" x 48" x 36" or 42" High



**Dist-24** - 24" Stool  
**Dist-30** - 30" Stool

# Maxwell Dining Set with Metal Bases



Texture on Table and Bench Tops: Millsawn  
Chairs: Smooth

- A MX427** - Maxwell Dining Table  
42-48" Wide x 60-96" Long  
Solid Tops Only
- B MXB7** - Maxwell Bench  
16"Deep x 48-96" Long
- C 2120L** - Low Back Shaker Side Chair  
18"W x 39"H
- D 3120L** - Low Back Shaker Arm Chair  
25"W x 39"H



# The Nith River Dining Suite



Texture: Vintage with Random Handplaned Tops  
Standard Pulls: Wood Knobs

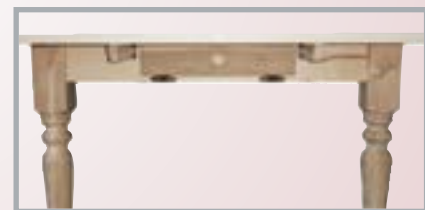
**A RSTHB52** - Hutch & Buffet  
52"W x 22"D x 79"H  
**RSTB52** - Buffet Only 36"H  
Also 2 door style 36"W  
4 door style 72"W

**B RSTS365** - Self-Storing End Leaf Table  
36" or 42"W  
60", 72", 84" or 96" long

**C BC12366** - Rustic Bookcase  
22", 36" or 48"W x 12"D  
36", 48", 60", 72" or 84"H

**D RSTSide** - Rustic Side Chair  
19"W x 19"D x 41"H

**E RSTArm** - Rustic Arm Chair  
21"W x 19"D x 41"H



Leaf is Hidden Away Inside False Drawer



2 Door version of  
above Hutch & Buffet  
Also Available

3 Door, 52"W and 4 Door, 72"W



12" End Leaf Inserted



Quick and Easy Setup

# Nith River Dining Tables

Texture: Vintage Base with Random Handplaned Tops



**RST2446** - Nith River Heavy Top Harvest Table  
Shown With Highback Mini Mission Chairs  
1 3/4" Top with 5 1/2" Tapered Legs  
42-48"W x 48-120"L



**RST366** - Nith River Harvest Table  
Shown With Mini Mission Chairs  
1 1/16" Top and 3 1/2" Tapered Legs  
36-48"W x 48-120" Long



*Both Tables Available with 18" End Leaves*

# Nith River Dining Tables

Texture: Vintage Base with Random Handplaned Tops



**RSTX425** - NithRiver Center Extension Harvest Table  
Shown With Shaker Chairs  
1 1/4" Top and 3 1/2" Tapered Legs  
36-42"W x 48-84" Long



*Table Shown with  
2 Center Leaves inserted*



**RSTSP42** - 42x42 Nith River Pedestal Table  
Shown With Royal Ladderback Chairs  
1 1/4" Top



**RSTSP422** - 42x42  
Single Pedestal Table with  
2 Center Leaves

*Also Available 36x36  
Single Ped 48x48 Single  
Ped 60x60 Single Ped*

# Palisade Dining Suite



Texture: Smooth  
Standard Pull: 5" Silver Bar Pull

**A PL30** - Palisade Arm Chair  
23"W x 42"H

**B PL20** - Palisade Side Chair  
19"W x 42"H

**C PLSB72** - Palisade 3 Drawer Sideboard  
72"W x 20"D x 40"H

**D PL426** - Palisade Solid Top Table  
42"W x 60" to 108"L

**E PLX426** - Palisade Center  
Extension Table  
42"W x 60" to 84"  
Plus 2-12" Centre Leaves



**E**



**PLB6** - Palisade Bench  
15"W x 48-96"L

# Live Edge Pillar Collection

Tops: 1¾" Thick  
Texture: Smooth Sanded  
Standard Pulls: Harvest Cup



**PT427** - 1¾" Thick Tops  
5" Thick Pillars  
42" or 48" Wide  
60" to 120" Long

**PB167** - Pillar Bench  
1¾" Thick Seat  
4" Pillars  
16"W, 48" to 120" Long



**P20** - Pillar Side Chair  
with Live Edge Seat  
20"D x 44"H x approx 22"W



**P30** - Pillar Arm Chair  
with Live Edge Seat  
20"D x 44"H x approx 26"W

## Small Tables

Texture: Smooth Sanded



**TS42R**  
42" Solid Top  
Pedestal Table

*Also Available:*  
**TS38R**  
38" Solid Top  
Pedestal Table



**T42R**  
42" Drop Leaf  
Pedestal Table  
*Also Available:*  
**T38R**  
38" Drop Leaf  
Pedestal Table

**Also Available with Square Tops**



# The Live Edge Waterfall Dining Suite

Texture: Smooth Sanded



**WFT428** - Waterfall Trestle Table  
42" or 48" Wide x 60" to 120" Long

**WFTB8** - Waterfall Trestle Bench  
16"W x 48-96"L



**WFS58** - Waterfall Sideboard  
57½"W x 20"D x 36"H



**WFC426** - Waterfall Cascade Table  
42" or 48" Wide x 60" to 120" Long

*Shown with Optional 18" End Leaves Inserted*



**WFCB6** - Waterfall Cascade Bench  
16"D x 18"H x 48" to 96" Long



**P23** - Panelback Side Chair  
19"W x 40"H



**P33** - Panelback Arm Chair  
23"W x 40"H

# Live Edge Tables

*Tables as unique as  
the trees they grow from!*

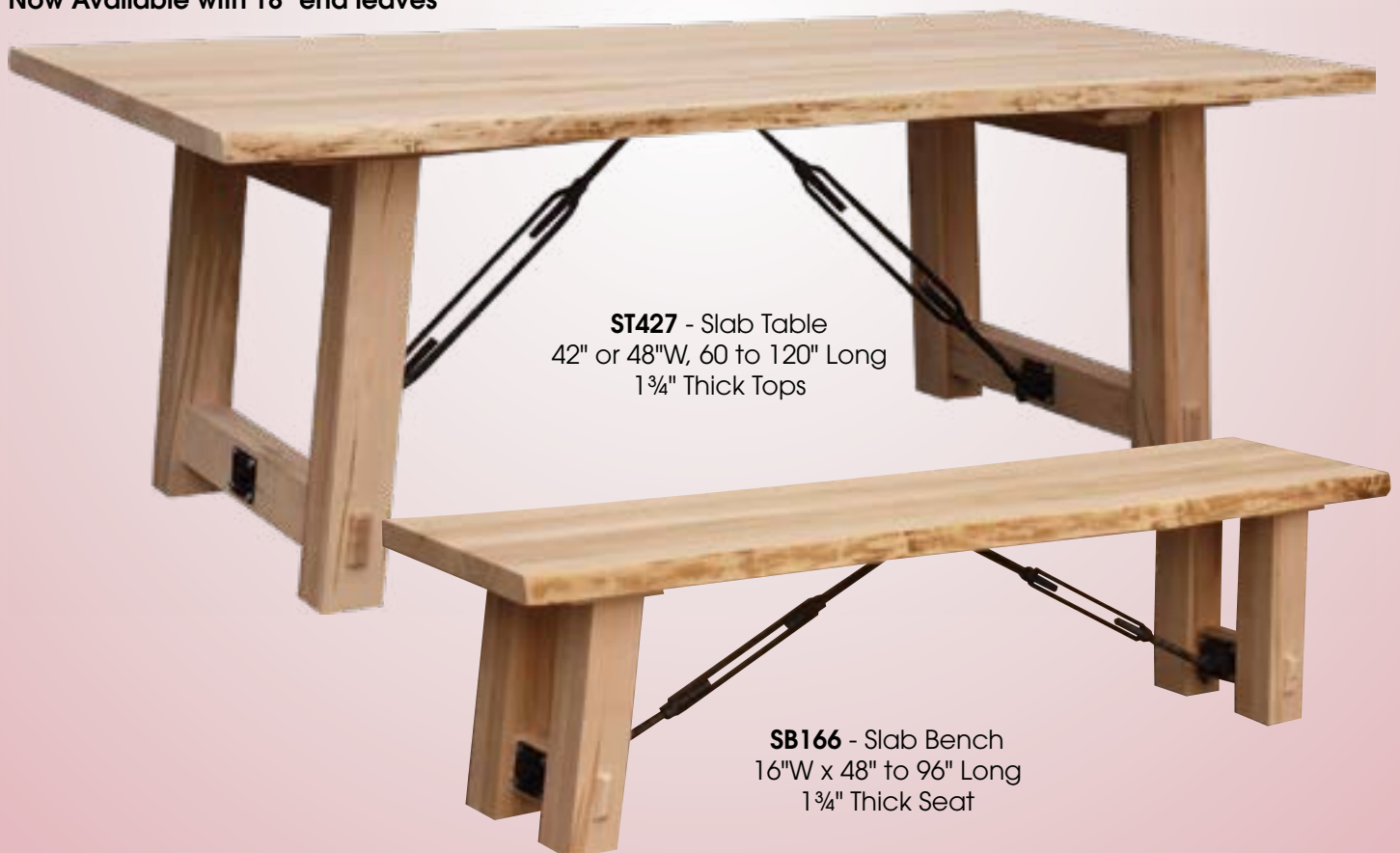
The edge of the table is an actual slice of the tree trunk...No two will be identical...EVER!

**Slab Top Turnbuckle Table & Bench**

**Smooth Tops, Vintage base**

Now Standard With Live Edge

Now Available with 18" end leaves



**ST427** - Slab Table  
42" or 48"W, 60 to 120" Long  
1 3/4" Thick Tops

**SB166** - Slab Bench  
16"W x 48" to 96" Long  
1 3/4" Thick Seat

# Yukon Turnbuckle Dining Room



Texture: Saw Marks All Over  
Standard Pulls: Rustic Iron

**A YT30** - Yukon Arm Chair  
26"W x 20"D x 44"H

**B YT426** - Yukon Turnbuckle Table  
with 2 12" leaves  
42"W x 60", 72", 84", 96", 108" or 120" long  
Shown with 2 12" end leaves inserted,  
also available as solid tops

**C YTB165** - Yukon Turnbuckle bench  
16"W x 18"H x 48", 60", 72", 84", 96"  
or 108" long

**D YT20** - Yukon Side Chair  
20"W x 20"D x 44"H

**E YT2252GH** - Yukon Turnbuckle Sideboard with  
Glass Door Hutch  
52"W x 22"D x 80"H



**YT21** - Yukon Ladderback Side Chair  
19"W x 21"D x 40"H



Close up view of surface texture



**YT2252OH**  
Yukon Sideboard With Open Hutch  
52"W x 22"D x 80"H

# More Yukon Dining Room

Texture: Saw Marks All Over  
Standard Pulls: Rustic Iron



**YT22**  
Yukon Block Chair  
18"W x 44"H



**YTP427** - Yukon Pedestal Table  
42"W x 60", 72", 84", 96", 108" or 120" Long  
*Now available with end leaves*



**YT32**  
Yukon Block Arm Chair  
27"W x 44"H



**YT2270**  
3 Door/3 Drawer Sideboard  
70"W x 22"D x 40"H  
Plus 3½" Backsplash



**YT22705** - 5 Drawer / 2 Door Sideboard  
70"W x 22"D x 40"H  
Plus 3½" Backsplash



**YT2252** - 2 Door Sideboard  
52"W x 22"D x 40"H  
Plus 3½" Backsplash, Half shelf inside

# Yukon Turnbuckle Islands

Texture: Saw Marks All Over  
Standard Pulls: Rustic Iron



**YTI3848** - Shown with End Leaf Option



**YTI3848** - Yukon 4 Door Island  
48"W x 38"D x 36"H  
2 Doors on both sides  
Seating all around



**YTI3262** - Yukon Seating Island  
9" Seating area at back and ends  
62"W x 32"D x 36"H



**YT424242** - Yukon Turnbuckle  
Pub Table 42"D x 42"W x 42"H

**YT424236** - Yukon Turnbuckle  
Pub Table 42"D x 42"W x 36"H

**YT4230** - 30" Block Bar Chair

**YT4224** - 24" Block Bar Chair



**YTSS24**  
24" Yukon Saddle Stool  
Seat 12" x 18"

**YTSS30**  
30" Yukon Saddle Stool  
Seat 12" x 18"

*Now Available with Swivel*



**YT4024**  
24" Yukon Bar Chair  
18"W x 16"D back 19"H

**YT4030**  
30" Yukon Bar Chair  
18"W x 16"D back 19"H

*Now Available with Swivel*

# Simplicity Islands & Bars

Texture: Smooth with Beading

Also available with Live Edge Tops



**SPW60** - Simplicity Wine Bar  
60"W x 28"D x 42"H  
Standard with wine lattice, glass rack,  
fridge compartment and foot rail



**SPS72** - Simplicity Split Level Bar  
72"W x 30"D x 42"H  
Standard with 3 inner drawers and foot rail,  
1 adjustable shelf



**SP72** - Simplicity 3 Door Island  
72"W x 30"D x 36"H  
Also Available: **SP50** - 2 Door Island 50"W  
**SP92** - 4 Door Island 92"W



# More Simplicity Islands

Texture: Smooth with Beading

Also available with Live Edge Tops



**SP66**  
Simplicity Seating Island with Feet  
66"W x 30"D x 36"H



**SP66T**  
Simplicity Split Level Island  
66"W x 30"D x 42"H



# Solid Wood Chairs



**LBSC** - Royal Ladderback  
Side Chair  
19"W x 43"H



**LBAC** - Royal Ladderback  
Arm Chair  
24"W x 43"H



**OSAC** - Old South Arm Chair  
25"W, 43"H



**2114** - Farm House Side Chair  
19"W, 41"H



**3114** - Farm House Arm Chair  
21"W, 41"H



**OSSC** - Old South Side Chair  
18"W, 43"H



**RSTIDE** - Rustic Side Chair  
19"W, 41"H

*This row available in Pine or Wormy Maple only*



**RSTARM** - Rustic Arm Chair  
21"W, 41"H



**RSTB30** - Rustic Swivel  
Bar Chair  
16"W, Back 20"H



**B3014** - Farm House  
Swivel Bar Chair  
16"W, Back 20"H



Also available with Leather or Upholstered Seats



**2119** - Mini Mission Side Chair  
19"W, 40"H



**3119** - Mini Mission Arm Chair  
23"W, 40"H



**B3019** - Mission Bar Chair  
17"W, Back 16"H



**2119H** - Hi Back Mini Mission Side Chair  
19"W, 42"H



**3119H** - Hi Back Mini Mission Arm Chair  
23"W, 42"H



**B3019S** - Mission Swivel Bar Chair  
17"W, Back 16"H



**WB20** - Westbrooke Side  
18"W x 39"H  
Smooth Texture



**WB30** - Westbrooke Arm  
23"W x 39"H  
Smooth Texture

Also available with Leather or Upholstered Seats



**BW20** - Backwoods Side  
18"W x 42"H



**BW30** - Backwoods Arm  
22"W x 42"H



**MS22** - Century Side  
Upholstered  
18"W x 43"H



**MS33** - Century Arm  
Upholstered  
22"W x 43"H



**2120** - Shaker Side Chair  
18"W, 43"H



**3120** - Shaker Arm Chair  
25"W, 43"H



**B3020** - Shaker Bar Chair  
18"W, Back 21"H



**2120L** - Low Shaker Side Chair  
18"W x 39"H



**3120L** - Low Shaker Arm Chair  
25"W x 39"H



**2220** - Shaker Ladder Back  
18"W x 43"H

Also available with Leather or Upholstered Seats



**BZ20** - Bonanza Side  
18"W x 39"H  
Millsawn Texture



**BZ30** - Bonanza Arm  
24"W x 39"H  
Millsawn Texture



**HS20** - Homestead Side  
18"W x 40"H  
Sawmarks Texture



**HS30** - Homestead Arm  
26"W x 40"H  
Sawmarks Texture



**MW20** - Millwright Side  
20"W x 44"H  
Vintage Texture



**MW30** - Millwright Arm  
26"W x 44"H  
Vintage Texture



**MS20** - Century Side  
20"W x 44"H  
Millsawn Texture



**MS30** - Century Arm  
26"W x 44"H  
Millsawn Texture



**P22** - Panelback Side  
19"W x 40"H  
Smooth Texture



**P33** - Panelback Arm  
23"W x 40"H  
Smooth Texture



**P20** - Pillar Side Chair  
with Live Edge Seat  
20"D x 44"H x approx 22"W



**P30** - Pillar Arm Chair  
with Live Edge Seat  
20"D x 44"H x approx 26"W

Also available with Leather or Upholstered Seats



**YT22** - Yukon Block Side  
18"W x 44"H  
Sawmark Texture



**YT33** - Yukon Block Arm  
27"W x 44"H  
Sawmark Texture



**YT20** - Yukon Slat Side  
20"W x 44"H  
Sawmark Texture



**YT30** - Yukon Slat Arm  
26"W x 44"H  
Sawmark Texture



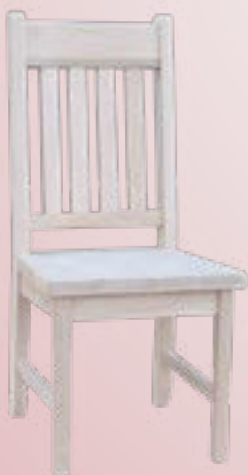
**YT21** - Yukon Ladder Back  
19"W x 40"H  
Sawmark Texture



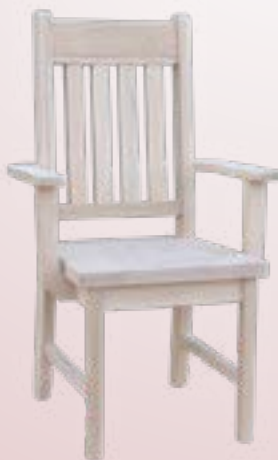
**YT4024** - Yukon Slat Bar Chair  
18"W x 16"D - Back 19"H  
24-30"H Seat  
Sawmark Texture



**YT4224** - Yukon Block Bar Chair  
18"W - Back 19"H  
24-30"H Seat



**RF20S** - Dakota Small  
Slat Side  
19"W x 40"H  
Vintage Texture



**RF30S** - Dakota  
Small Slat Arm  
25"W x 40"H  
Vintage Texture



**RF21** - Dakota  
Ladder Back Side  
19"W x 40"H  
Vintage Texture



**RF31** - Dakota  
Ladder Back Arm  
25"W x 40"H  
Vintage Texture

Also available with Leather or Upholstered Seats



**RF20** - Dakota Slat Side  
20"W x 44"H  
Vintage Texture



**RF30** - Dakota Slat Arm  
26"W x 44"H  
Vintage Texture



**RF4024** - Dakota Slat  
Bar Chair  
18"W - Back 19"H  
24-30" to seat



**RF4124** - Dakota Ladder Back  
Bar Chair  
18"W - Back 19"H  
24-30" to seat



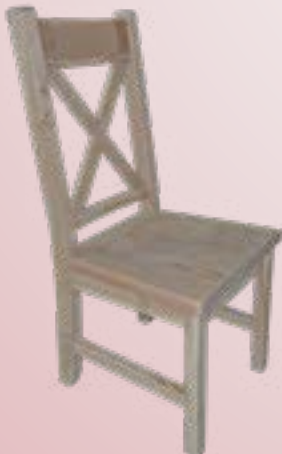
**RF4030S** - Dakota Swivel  
Bar Chair  
18"W - Back 19"H  
Vintage Texture



**PL20** - Pallisade Side  
19"W x 42"H  
Smooth Texture



**PL30** - Pallisade Arm  
23"W x 42"H  
Smooth Texture



**KL22** - Klondike Side  
19"W x 40"H  
Millsawn Texture



**KL23** - Klondike Arm  
25"W x 40"H  
Millsawn Texture



**KL20** - Klondike Side  
19"W x 40"H  
Millsawn Texture



**KL20** - Back View

# Stools



**SS24** - 24" Saddle Stool  
**SS26** - 26" Saddle Stool  
**SS30** - 30" Saddle Stool  
 Seat 13" x 16"  
**SS18** - 18" Saddle Stool



**SH30**  
 Round Top Stool  
 Seat 15" Round,  
 24", 26" or 30"H  
*Also available w/  
 swivels*



**RST24** - 24"H Rustic  
 Plain Stool  
**RST30** - 30"H



**YTSS24**  
 Yukon Saddle Stool  
 Seat 12" x 18"  
 24" to 30"H



**IPT24**  
 Implement Stool  
 13"D x 17"W  
 24" to 30"H



**DIST30**  
 Distillery Saddle Stool  
 Seats  
 2¾" x 13" x 16"  
 24" or 30"H

# Loveseats



**8120** - Shaker Storage Bench  
 42"L, 44"H

**8114** - Farmhouse Love Seat  
 42"L, 42"H



**8119** - Mission Love Seat  
 42"L, 40"H

# Love Seats & Hall Benches



**HB1830** - Dakota Hall Bench with Mirrors  
30"W x 18"D x 78"H  
Saw Marks All Over



**R36H** - 36" Hall Seat



**RF80HS** - Dakota Hiback Storage Bench  
48"L x 24"D x 56"H  
Lift-up lid and Cedar Bottom



**DD-LE52** - Live Edge  
Hall Bench  
21"D x 54"W x 52"H



**DD-LE72** - Live Edge  
Hall Bench with Mirror  
21"D x 54"W x 72"H



**RF81** - Ladderback Loveseat  
48"L x 21"D x 40"H



**RF80** - Slat Back Love Seat  
48"L x 22"D x 44"H

# Rocking Chairs

Available in Oak, Maple, or Pine, unless specified otherwise



**RGRAMPA#** Grampa Rocker  
24"W x 42"H  
*Not available in Pine*



**R3120** - Shaker Rocking Chair  
25"W x 40"H



**RBOS** - Boston Rocker  
26"W x 44"H  
*Not available in Pine*



**OSR** - Old South  
Rocker  
25½" W x 44"H



# Barn Doors

Preferred texture must be specified when ordering



**BD1 Style #1**



**BD2 Style #2**



**BD3 Style #3**



**BD4 Style #4**

**BDTH** - Black Horseshoe Trolleys



**BD5 Style #5**

Shown in Double Door Style



**BDTS** - Black Rustic Strap Trolleys

Black Track Available in 2 Meter, 2.5 Meter and 3 Meter Lengths.

Track can be joined together for longer lengths.

Due to the various doorway opening sizes, there are no standard door sizes listed. Size must be specified when ordering.

# Miscellaneous Items



**RSTMRack** - Rustic Magazine Rack  
25"H x 21"W x 14"D



**C Chest**  
Cedar, Oak, Maple or Pine  
With or without stars & diamonds  
40"W x 20"D x 22"H



**RHORSE** - Rocking Horse  
32"W x 11"D x 26"H



**HTWH** - Hall Tree  
w/ Gold Hooks  
Base 22" x 22", 70"H



**RF24CT** - Dakota Coat Tree  
w/Wood Hooks  
Base 24" x 24", 70"H  
Post 4" x 4"



**RSTKTC** - Kids Table Set with 4 Chairs 36"W x 22"D x 21"H



