

TENSIONING SOLUTIONS Inc.

"Your simple, low-cost banner Stretching System"

Newsletter - March 26, 2015

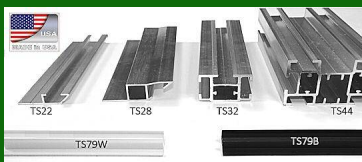
IN THIS ISSUE:

- [Banner Stretching Frames](#)
- [TS22 - One Front Channel](#)
- [TS28 - One Rear Channel](#)
- [TS32 - 3 Channels](#)
- [TS44 - 6 Channels](#)

SO MANY
APPLICATIONS...



REALIZED WITH A HAND-
FULL OF EXTRUSIONS

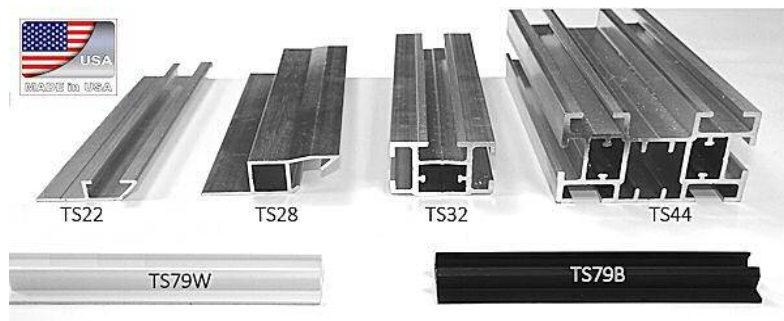


KEEP IN TOUCH...

Welcome To Our Newsletter

Banner Stretching Frames Review

Our different aluminum extrusions have different numbers of channels where the graphics can be inserted and stretched.



Let's review the possibilities we have with each extrusion.

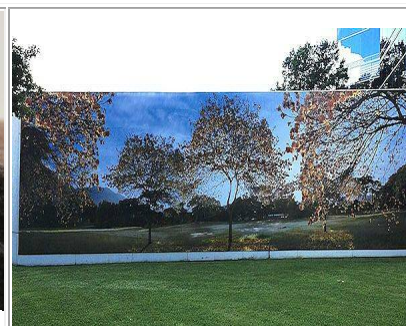
[Top of Page](#)

TS22 - ONE FRONT CHANNEL

The TS22 aluminum extrusion has one channel on the front. This means that the white or black PVC strip will be visible all around the frame.



TS22 Extrusion fixed on a brick with a Tapcon screw.



TS22 6'X60' Wall Frame - Houston, TX

Phone: (800) 436-8242



[Gallery](#)

Web: www.tensols.com



[Send us an Email](#)

[Subscribe To Our
Newsletter](#)



All our aluminum and
PVC extrusions are
100% recyclable.



Our entire aluminum and PVC
extrusion product line is
designed and manufactured in
the USA.

How does it work?
Have a look to our video...



THE COMPANY

Tensioning Solutions mission
is to propose to sign
professionals a product line
of aluminum extruded bars of
the highest quality. Designed
to Stretch Banners for many
applications, and which are
easy to install, versatile and
very cost effective.



TS22 frame on box trucks and
trailers



TS22 aluminum extrusion with a
white PVC strip (TS79W)

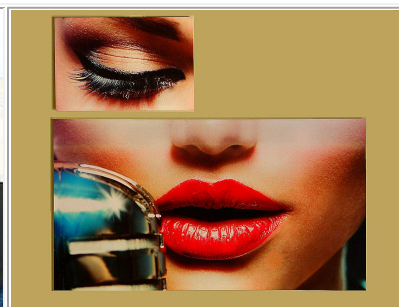
[Top of Page](#)

TS28 - ONE REAR CHANNEL

The TS28 has only one channel in the rear of the extrusion.
It is designed to fabricate interior Art frame to decorate Hallways,
Conference rooms, branches and also museums, exhibits, galleries...



Rear corner of a TS28 frame.
Screwing the PVC corner is not
mandatory. The PVC corner can be
glued with excellent results.



The result is a stunning slim frame
hung to the wall like a painting.

[Top of Page](#)

TS32 - 3 CHANNELS

The graphics can be stretched with the PVC locking strip inserted to the
front, the side and the rear of the extrusion
When the graphic is fixed from the rear, it wraps entirely the frame.

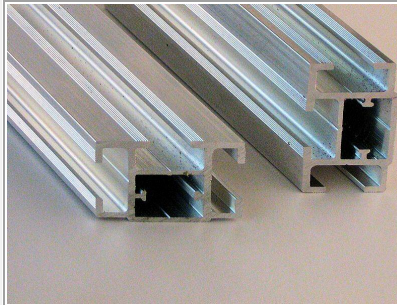
Designed for medium and large size framed banners and signs for:

- Advertising
- Construction sites
- Architectural applications (Walls, ceiling...)
- Sports Events
- Shops, malls decorations

Tensioning Solutions Inc.

January 2014

Ask For A Free Quote



TS32 Extrusions



TS32 Frame - 12ft x 40ft Graphic on fluted metallic building



TS32- Two Parking Garage Banners-6.5ft X 40ft

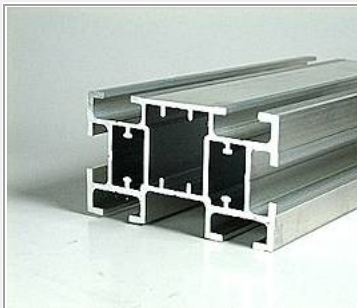


TS32-82inch. x 56inch. Wrapped Frame

Top of Page

TS44 - 6 CHANNELS

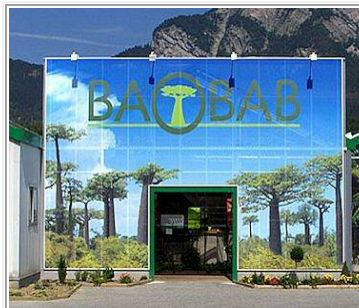
Our sturdiest extruded aluminum bar is designed for medium, large and very large (> 5,000 Sq ft) framed stretched banners and signs. It is also used for building structures such as exhibition booths, and 3D signs.



TS44 Extrusion



Entire building covered with printed Vinyl graphics



Storefront covered with mesh vinyl



Huge graphics can be stretched too!

Top of Page



**TENSIONING
SOLUTIONS**

Tensioning Solutions Inc.

EASY TO INSTALL FOR ANY FRAME SHAPES AND SIZES,