

The image displays a collection of memorabilia from the Holmenkollen Ski Festival. At the top left is a red and white race bib for the year 1978, featuring the number 4594 and the text "VITAPLEX", "HOLMENKOLLEN", and "HOLMENKOLMARSIEN". A small blue sticky note is attached to the bib. To its right is a newspaper clipping from 1978 with the headline "Glatt både på langs og tvers i fire mil" (Smooth both lengthwise and crosswise in four miles), showing a group of skiers. Below the bib is another newspaper clipping titled "Holmenkoll-marsjen" (Holmenkollen March), featuring a photo of a large group of skiers and text about the event. To the right of the newspaper is another red and white race bib for the year 1978, featuring the number 3264 and the text "VITAPLEX", "HOLMENKOLLEN", "SKI FESTIVAL", and "Holmenkollmarsjen". Below the newspaper is a photo album page titled "HOLMENKOLLMARSIEN SKI RACE, OSLO" with three photos of participants. The first photo shows a skier in a blue suit, the second shows a skier in a red suit, and the third shows a skier in a pink suit. The page also includes text about the race and a list of participants.



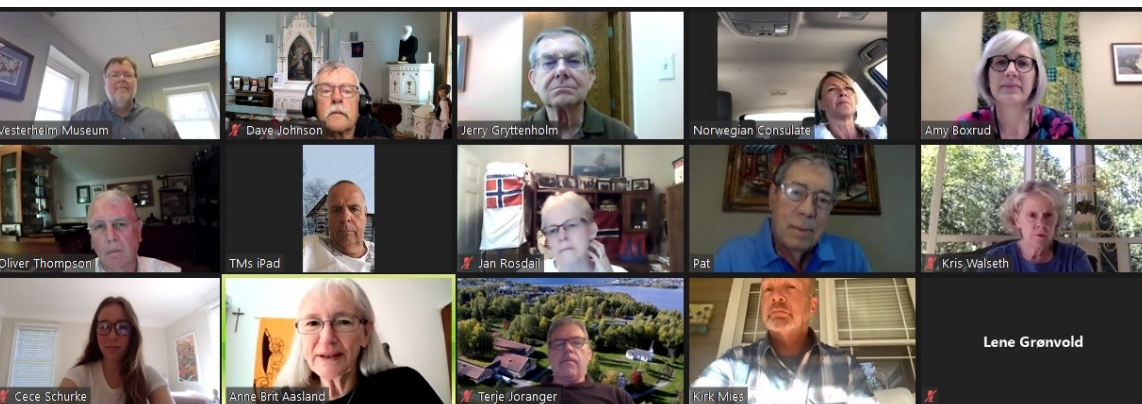
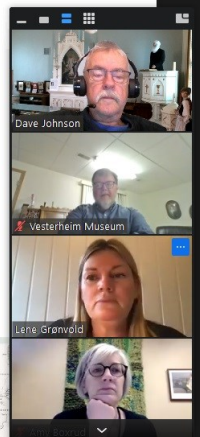
NORSK MUSEUM



President Calvin Coolidge in 1925

2025 update Norway

- No funding secured from the Ministry of Culture in the National Budget 2022
- The Emigrant Museum is still prepared to continue as Coordinator
- National Committee already more than 50 NGOs and institutions encouraged to reflect on how they can contribute to the event
- Working groups and communication channels
- Exchange of best practice with other large events



2025 Bicentennial
Zoom meeting with
committee mem-
bers from around
the world.

NORSK MUSEUM



**Busy
throughout
the summer.**

NORSK MUSEUM

HOLIDAY MAGIC LIGHTED SANTA PARADE & LIGHT UP KNUDSON PARK
SATURDAY, DECEMBER 4TH

Questions? Call 815-795-2414.

Food for Purchase

Rudolph joins Santa in Marseilles!

Girl Scout Troop 1667
Singing Christmas Carols!

Parade Route
North on Main St. to Clark St.
West on Clark St. to Sycamore St. to Commercial St. Head East to Main St., East on Broadway St. to Chicago St. rounding the curve by the school, West on Lincoln St. to Knudson Park for the lighting ceremony & pictures with Santa.

Candy Bar Snowman handed out by Marseilles Lions Club (while supplies last)

Craft Booths!
TNT Hot Cider Fundraiser
Magic Mark 6 pm - 7:30 pm
Santa Polar Express! Train Rides 6 pm - 8 pm

Line up at 4:30 pm.
Parade leaves IV Cellular, 200 Riverfront Dr., at 5:30 pm.

Brookfield 4-H Aces
Hot cocoa for donations and collecting for crayons, colored pencils, markers, adult coloring books, large print word searches to be donated to Aperia Care-Marseilles.

Visiting/pictures with Santa will take place in the park under the bandstand. It will be done standing next to Santa, not sitting on his lap.

LETTERS TO SANTA
Put your letters in the box next to Santa.
DON'T FORGET TO INCLUDE YOUR MAILING ADDRESS!
Marseilles Tourism and Park Committee & City of Marseilles



On the parade circuit,
even in December
Marseilles Illinois

NORSK MUSEUM

Gone but not forgotten



Lou Wise



Pat Hayes



Phyllis Benson



Bennie Helland



Orion Carlson

NORSK MUSEUM

2022 plans / wish list

- ♦ Stabbur project completed
- ♦ Recruit more docents
- ♦ Get article published in Viking magazine
- ♦ NTA Dinner theatre (3rd meeting of the Norway Temperance Association)
- ♦ Norway Temperance building donated to us??
- ♦ Teresa's Nordic documentary puts us on the map!!
- ♦ Strengthen ties between Stavanger Norway and our community
- ♦ Preparation for the Sloop 200th Anniversary
- ♦ Get the Cleng Peerson children's book published



Donations

- ♦ Polar Star lodge \$100 + volunteer hours = priceless!!
- ♦ Cleng Peerson Lodge (\$20,000 to date) + volunteer hours = priceless!!
- ♦ Verdandi lodge \$1,750 (\$5,250 to date)
- ♦ Exelon volunteers \$700 (\$3,500 to date)
- ♦ Gjovik auto sales (\$2,000 to date)
- ♦ David Holt \$250 (\$500 to date)
- ♦ Don Harsted donate \$50 ancestry (\$100 to date)
- ♦ Dennis Beckmann \$100 (\$200 to date)
- ♦ Pat Hayes memorial \$750
- ♦ Petra Luke \$500
- ♦ Linda Anderson \$200 (\$500 to date)
- ♦ Edward Aldrich \$125
- ♦ Floyd & Ruthann Dierzen memorial \$125
- ♦ Norway Cruise \$100 (\$600 to date)
- ♦ Ralph & Lynnette Johnson \$100
- ♦ Laurie Gage \$100
- ♦ Jerry & Carole Johnson \$100
- ♦ Tom & Lynn Sove Maxson [too much to list here]
- ♦ Art & Nancy Andersen [too much to list here]
- ♦ Plus many more in membership donations.....

Mange takk!

NORSK MUSEUM

Wayne "Buck" Borchsenius is 101 on Jan 18th!

Buck is the patriarch of the Norway Store, Mr. Norway, a veteran who served our country in World War II, the first president and founding member of the Norsk Museum, and much more. Thank you for all you do and Happy Birthday.



Happy Birthday!

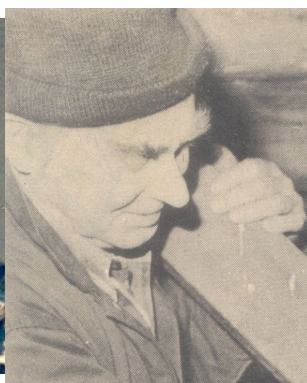


NORSK MUSEUM

Norsk Museum Board Member Memorial



This Spring, plan to attend our Memorial Tree Dedication. A Norwegian Spruce tree and a plaque to honor past board members who made our museum what it is today. Details to follow.



NORSK MUSEUM

Dist 5 virtual history class began January 23 2021 via Zoom - Norwegian-American settlement history

Our faculty are District 5 members who are expert in different areas of Norwegian-American history. Bill Injerd, Dave Johnson and Mike Palecek have all published books on Norwegian-American history, Dana Kelly has worked on producing a documentary video, Dave and Ruth Amundson have created the HistoryAlive foundation to educate school-children about their Norwegian-American ancestors past.

The collage features several historical images and text elements. At the top, there are two black and white photographs of sailing ships. Below these, the text "Beginnings in 1925: Slooper Society of America" is displayed. Further down, the text "Norwegians in Illinois" is shown. Below that, the text "Lay Preachers" is visible. At the bottom, a red box contains the following text: "5. LARS LARSEN JEILANE was on a prison ship for 7 years (1807 - 1814)", "6. Prisoners were aided by Quakers", and "7. Lars stayed in England for 1 year after the war and worked among the Quakers". Overlaid on the right side of the collage are several Zoom video feeds of participants, including Michael Palecek, Bill Injerd, Kirk Miles, Dave Johnson, Dana Kelly, and David Amundson.

I only had a small part in this History Course, but the research introduced me to dozens more resources for my future "Cleng Peerson" book. This was a magical experience in Norwegian History. Below is the link, to see for yourself: *Dave Johnson*

[Norwegian American History | Sons of Norway District 5 \(sonsofnorway5.com\)](http://sonsofnorway5.com)

NORSK MUSEUM

ABBA—Norway's Nazi Secret



Anni-Frid Lyngstad popular known as Frida Lyngstad, was one of the four members of the Swedish group ABBA. Frida Lyngstad was born on November 15, 1945, in Bjørkåsen, a little hamlet in Ballangen, northern Norway, to a young Norwegian girl and a German soldier, Alfred Haase just after the end of the Second World War and the German occupation of Norway.

Just like Frida, there were as many as 14,000 children borne out of liaisons between Nazi soldiers and Norwegian women. Offspring were produced by RSS chief Heinrich Himmler's Lebensborn ('fountain of life') plan to produce a race of blond-haired Aryans. Special homes were established throughout Germany and its occupied places in Europe, including Norway; where SS officers had intercourse with selected women. Frida was the product of one such affair.

.In 1943, three years after Germany attacked Norway, a 24 year old Nazi sergeant Alfred Haase who was posted to Ballangen was taken by the sight of the beautiful 18 year old Synni Lyngstad. Ballangen is a little town, 20 miles from the Narvik Port, where the SS had set up the Lebensborn stud home was built. Haase wooed Lyngstad with a sack of potatoes that was scarce in wartime Norway. One thing led to the other, and the two became intimate and had a physical relationship.

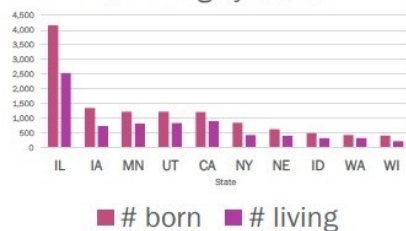
Synni was subject to ridicule and insults for having slept with a German man. Enough of taunts and ridicule, Synni and her widowed mother Agny (Arntine Lyngstad) left Norway to come to Sweden. Agny left first and Synni followed her mother two years later. Though Synni took the job of a waitress to take care of her family, she didn't live long. She died of kidney failure at a young age of 21, when Frida was just 2 years old.

NORSK MUSEUM

**Dave Johnson
was Presenter
for the Annual
Slooper Meet-
ing in October**



Number Sloopers born,
still living by 'State'



Slooper
descendants
are in every
state



KIND OF FOOD ON WHICH A HUNDRED GENERATIONS
OF NORWAY SEAMEN

Flatbrød and mylsa and brim and prim and bresta



Elling Eielsen was the
classic Circuit Preacher

- Came to Fox River in 1839 and built the first Norwegian Lutheran Church in America



Rev. C. L. Clatten.



Rev. J. W. C. Dahlgren.

Church conflicts

- Bishop Jacob Neumann (1772-1848) was a Norwegian bishop

NORSK MUSEUM

Mary is the Gr-granddaughter of both William Randolph Hearst [the newspaper giant] and Charles Nelson Thompson [the circus giant] and Slooper descendant.

MARY
"BUNNY"
HEARST IVES
1953-2004



Slooper descendants

JOSEPH SHERRARD
KEARNS
(FEBRUARY 12, 1907
– FEBRUARY 17,
1962) ("MR. WILSON")



Gr-grandson of Sarah Nelson of Mormon President Canute Peterson. Gr-Gr-Grandson of Cornelius Nilsen Hersdal of Kari Pedersdatter, sister of Kleng Pedersen (Cleng Peerson)

NORSK MUSEUM

January 2021 in the news...

After more than 125 years on the city's West Side, **Norwegian American Hospital** is changed its name to **Humboldt Park Health** to better reflect the diverse community it serves.

The 200-bed hospital in the city's Humboldt Park neighborhood was **founded in 1894** by a group of Norwegians. In addition to Humboldt Park, it serves Logan Square.

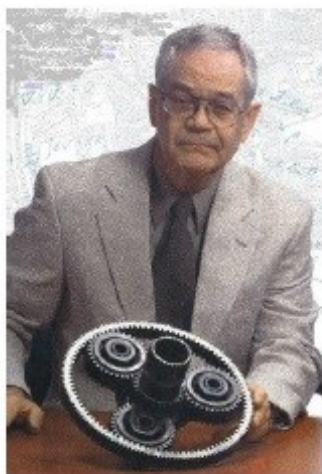
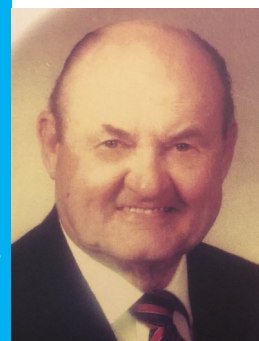


NORSK MUSEUM



Holger Nelson Toftoy was born just north of Marseilles, Illinois. He made national attention in 1946 by predicting space travel to the moon. In 1944 Toftoy recruited 100 Nazi scientists including Dr. Wernher von Braun to work for America. The results gave us our military lead, the space program and so many technological advantages that we now all enjoy.

Russel J. Benson, Born Oct. 12, 1920, in Earlville, he was the son of Stanley and Mabel (Kirkhus) Benson. He married Phyllis Knutson on May 17, 1942, in Lee. He was a veteran of the U.S. Army Air Corps. He was a civilian instructor for the Air Force at Chanhute Field in Rantoul, Ill. He was employed by Martin-Marietta, working on the Titan missile project in Denver, CO.



Norwegian Contributions to Space

Did you know that six of our astronauts were Norwegian-Americans?

Astronauts of Norwegian descent:

1. William Alison "Bill" Anders
2. Michael Edward Fossum
3. Mark Charles Lee USAF Colonel
4. Karen LuJean Nyberg
5. Sally Kristen Ride (1951 - 2012)
6. Donald Kent "Deke" Slayton (1924 - 1993), (Major, USAF)



David Brewe [Local Notable Norwegian]

Born in Lisbon, Illinois, above the Brewe Grocery Store

Graduated Newark High School

Illinois Institute of Technology (physics)

Career: Tribology (lubrication in bearing and gears)

NASA rockets 1962-72

Army Abrams M1A 1/2 Tank

Aerospace engineer

Instructor at West Point 1995-96

NERVA [Nuclear Engines for Rocket Vehicle Applications]

Hydrodynamic computer code "Elrod Cavitation Algorithm"

Newark High School

DAVID BREWE
Radio Club 4; Secretary 4; "Trail of the Lonesome Pine" 3; Boys' Chorus 1, 2; Mixed Chorus 1, 2; Student Council 3, 4; New-ark-o-Stall 4; Basketball 3, 4; Baseball 1, 2, 3, 4; "Adams' Evening" 4.



Walter S. Fruland Jr. - (8/24/1920 - 9/30/2013), born in Danway, Lasalle County, Illinois, USA. A Sloopier descendant of Daniel Rossedal Rosdail. Fruland joined the Protocol Branch under Frank Hickey, making people more aware of what NASA was and their role at Houston before there was a Manned Spacecraft Center. He then joined the Special Events group, in charge of visitors. This was a two-prong assignment. The second prong being support representatives to the astronauts and their families during missions.

A national spokesman for space launches.



NORSK MUSEUM

Board members:

Dave Johnson [President]

Charleen Seville [Vice Pres]

Rich Gunderson [Treasurer]

Linda Anderson [Secretary]

Lynnette Johnson [Membership]

Roald Berg [plus NNL & Polar Star]

Wayne Borchsenius [Charter President]

Rob Borchsenius [plus NIL President]

Steve Tanda [plus NNL & Polar Star]

Laurie Gage [plus Cleng Peerson Lodge]

Ed Hatteberg [plus Polar Star]

Ralph Johnson [plus Cleng Peerson Lodge]

Sheila Gunderson [plus Cleng Peerson Lodge]



Mange takk to you our members, supporters who serve as docents throughout the summer, all the volunteers who man our fundraisers.

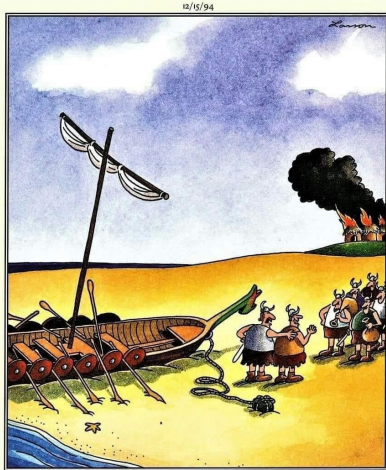
Special thanks of Sons of Norway lodges:

Cleng Peerson Lodge

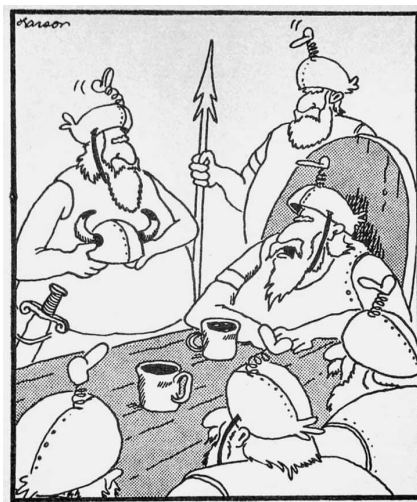
Polar Star Lodge

NORSK MUSEUM

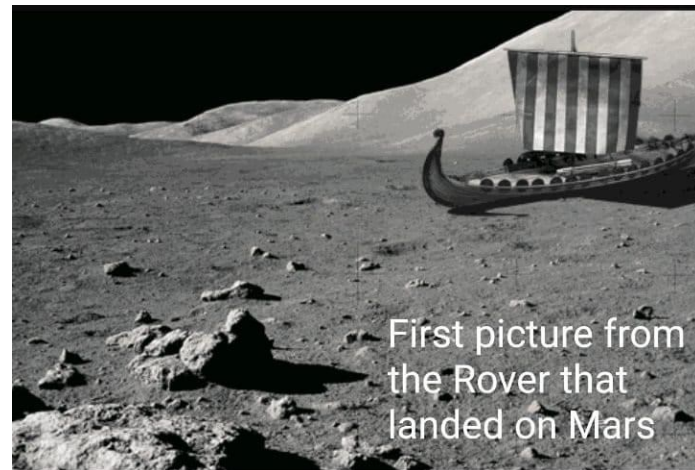
12/16/94



"Everyone can just put down their loot and plunder, and Sven here—yes, old Sven, who was in charge of reading the tide chart—has something to say to us all."



"Now on to other business... Ole Johnson here has a new helmet design to show us!"

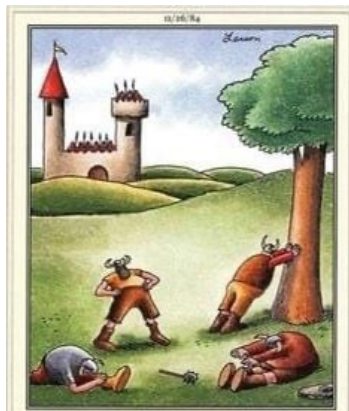


First picture from the Rover that landed on Mars

Norsk Museum on Facebook.

957 likes and growing. Sharing news from the past and present, honoring Notable Norwegians, learning language and fun.

12/16/94



The Vikings, of course, knew the importance of stretching before an attack.

LOOSE PARTS

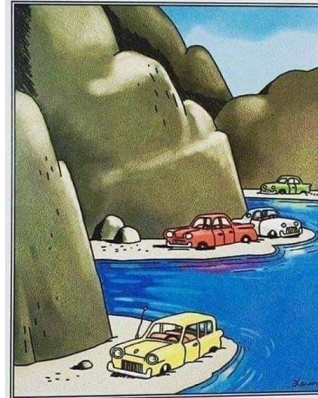
DAVE BLAZEK

10-10

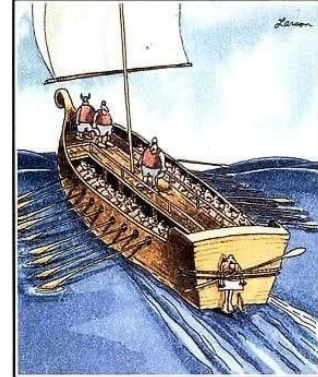


"Let us attack with the fierceness of the beasts whose spirits we... ummm... errr... Olafsen, can I have a word with you?"

11/25/85



The Fords of Norway



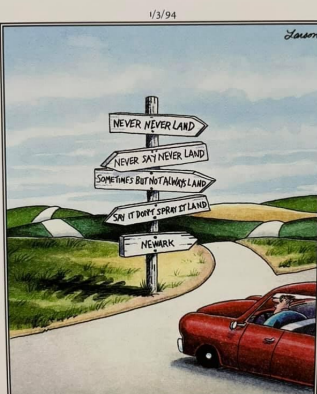
The better-equipped slave ships, of course, always carried a spare.



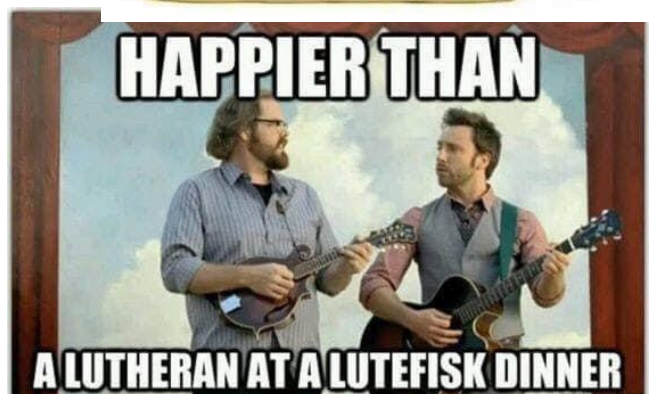
Acupuncture in different cultures



1/3/94



Crucial decisions along life's highway



Become a Member of the Norsk Museum

Membership Benefits:

- ◆ A free private tour of the museum
- ◆ 10% discount at our gift shop
- ◆ Annual member dinner and meeting
- ◆ The satisfaction of helping to preserve the oldest Norwegian church in America

Annual Memberships:

- ☐ Individual \$25
- ☐ Family \$35
- ☐ Bronze Corporate \$100
- ☐ Silver Corporate \$250
- ☐ Gold Corporate \$500

Your additional donation supports continued restoration and enjoyment of this historic landmark.

☐ Cash \$ _____

⇒all contributions are tax deductible

I/We have included Norwegian Center Incorporated [Norsk Museum]

- ☐ In my/our will/trust
- ☐ In other estate plans

Personal Contact Information:

Name/Business _____

Address _____

City/State/Zip _____

Phone _____

Email _____

Please send this form and your membership donation to:

Norwegian Center Incorporated
415 Lewis St.
Marseilles, IL 61341

