

LEGEND
 (APPLICABLE TO ALL SHEETS)
 ○ SET 5/8" REBAR & PLASTIC CAP, L5931450
 ● FOUND REBAR AND CAP PER PLAT OF PHASE 1 & 2
 ● FOUND MONUMENT AS NOTED
 ① RECORD DEED DIMENSION
 ○ COUNTY DESIGNATED PARCEL ADDRESS
 A.P.# COUNTY ASSESSOR'S PARCEL NUMBER
 A.F.# COUNTY AUDITOR'S REFERENCE NUMBER

BASIS OF BEARINGS:
 WASHINGTON STATE PLANE GRID NORTH ZONE, BASED ON STATE DUAL FREQUENCY GPS TIES TO AT LEAST THREE N.G.S. CORS STATIONS.
 CONVERGENCE ANGLE = -00'23.79"
 ALL MEASURED DISTANCES ARE ROTATED TO GRID DISTANCES, MULTIPLY BY 1.000113 TO OBTAIN ACTUAL GROUND DISTANCE.

EQUIPMENT & PROCEDURES
 SURVEYING EQUIPMENT: TOPCON HABER AND LEICA E 608 REFLECTOR, RAINCO R6000 AND A TDS RECORDING DATA COLLECTION SYSTEM.
 PROCEDURES: REAL TIME KINEMATIC SURVEY WITH DOUBLE OBSERVATION OF NEW AND OLD POINTS. INTERMEDIATE POINTS WERE USED FOR BETTER OBSERVATION WITH AN APPROXIMATE PRESSION OF 10.00 FEET.
 SURVEY DATES: INITIAL CONTROL SURVEY IN MARCH AND APRIL 2005.
 SET MONUMENTATION: AUGUST 2005.

**OVERALL LAYOUT PLAT
 CLOS CHEVALLE P.D.
 PHASE 3**

Pinnacle Surveying
 Tim Hollingsworth, PLS
 601 W. Woodin Ave, P.O. Box 1107 - Chelan Washington, 98816
 509.682.2266 - tollfree@pinnacle.com
 LAYOUT: SHEET 2
 DATE: 5-16-06
 FILE: 200027 P2S1-22MG
 PROJECT: H: 1206027/DWG/FINAL

NOTICE:
 CENTER OF SECTION COMPUTED FROM SURVEY B.S. 5, P.C. 4 AND B.S. 34, P.G. 1, 1/2" PIRE NOT FOUND. A TRIPKICK, NO CAP, FOUND. FROM COMPACTED CORNER.

STATE HIGHWAY SR-97A
 SEE SHEET 9 OF PLAT OF PHASE 1 & 2, A.F. #2218221 FOR DETAILS

REBAR AND CAP MONUMENT ESTABLISHED FOR
 REBAR AND CAP MONUMENT ESTABLISHED FOR SURVEY B.S. 5, P.C. 4 & 5, AND B.S. 34, P.G. 1, 1/2" PIRE NOT FOUND. FROM COMPACTED CORNER.

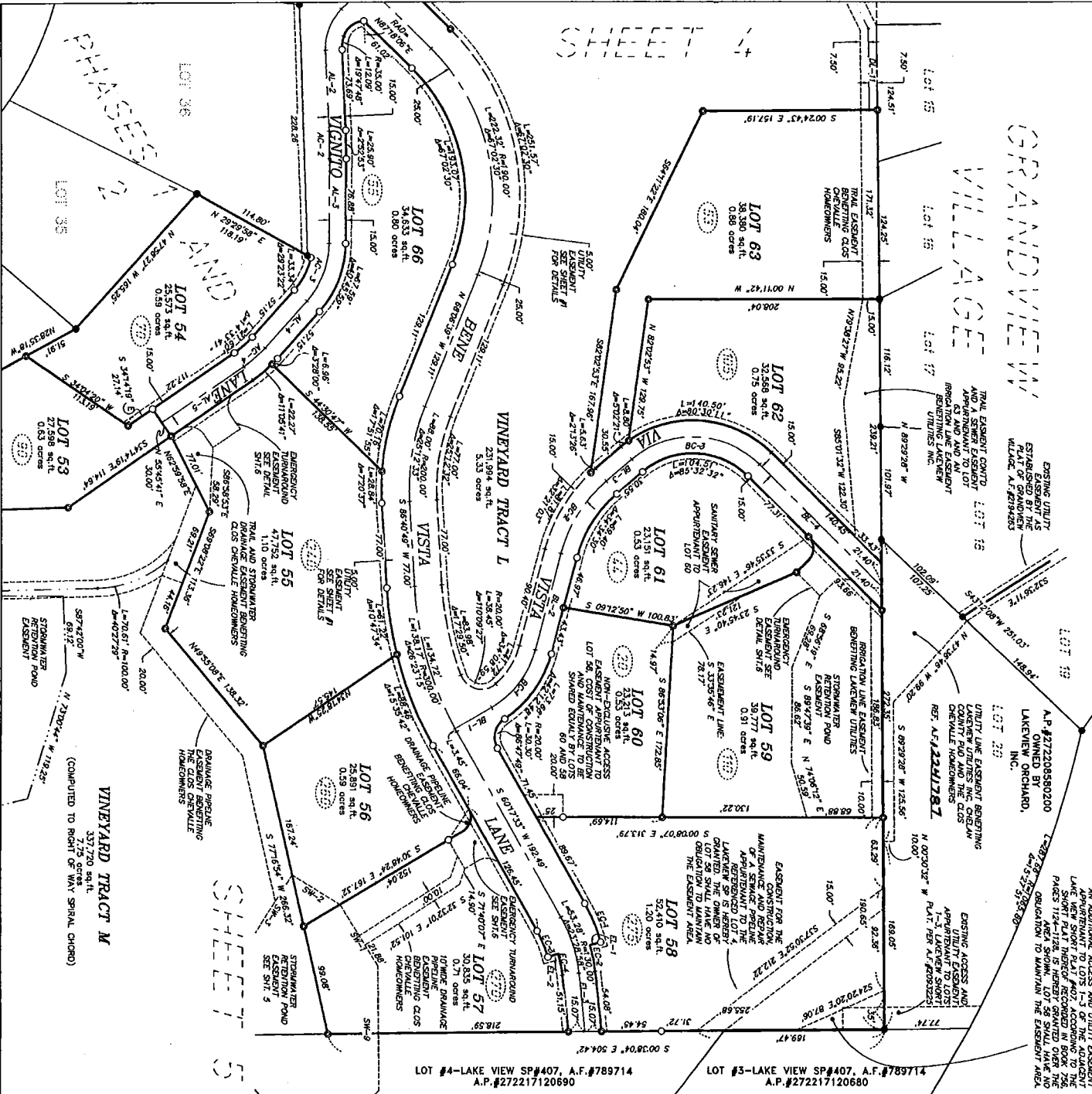
US POSTAL MAIL SERVICE
 FOR ALL LOTS
 SEE SHEET #1 OF CLOS CHEVALLE P.D. FOR DETAILS

REBAR AND CAP MONUMENT ESTABLISHED FOR
 REBAR AND CAP MONUMENT ESTABLISHED FOR SURVEY B.S. 5, P.C. 4 & 5, AND B.S. 34, P.G. 1, 1/2" PIRE NOT FOUND. FROM COMPACTED CORNER.

REBAR AND CAP MONUMENT ESTABLISHED FOR
 REBAR AND CAP MONUMENT ESTABLISHED FOR SURVEY B.S. 5, P.C. 4 & 5, AND B.S. 34, P.G. 1, 1/2" PIRE NOT FOUND. FROM COMPACTED CORNER.

REBAR AND CAP MONUMENT ESTABLISHED FOR
 REBAR AND CAP MONUMENT ESTABLISHED FOR SURVEY B.S. 5, P.C. 4 & 5, AND B.S. 34, P.G. 1, 1/2" PIRE NOT FOUND. FROM COMPACTED CORNER.

SHT	2
OF	6



LEGEND

- (APPLIES TO ALL SHEETS)
- SET 5/8" REBAR & 2.5" LUMINUM CAP, 15#X150
- SET 5/8" REBAR & PLASTIC CAP, 15#X150
- FOUND REBAR AND CAP PER PLAT OF PHASE 1 & 2
- FOUND MONUMENT AS NOTED
- COUNT DESIGNATED PARCEL ADDRESS

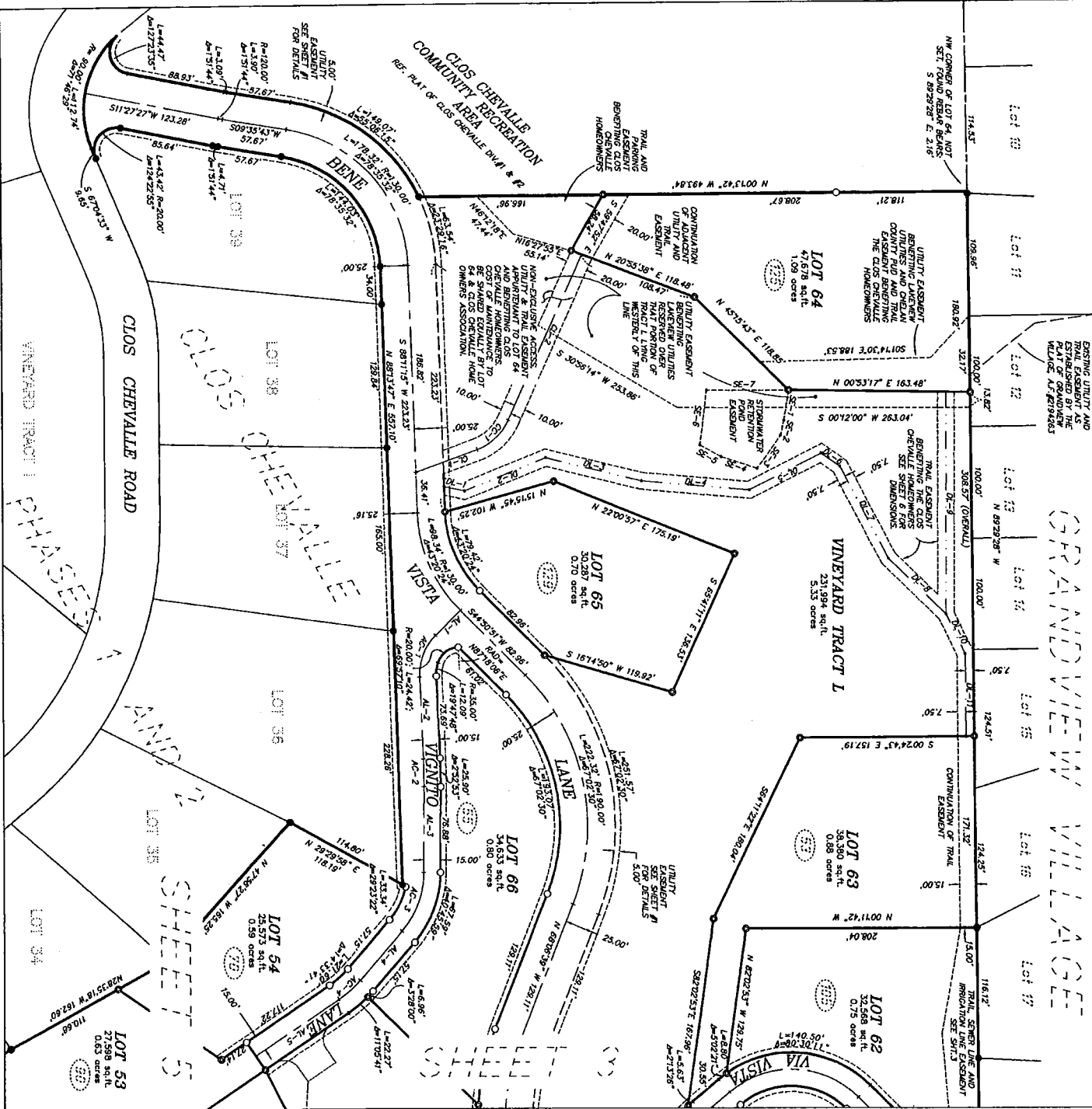
LOT DETAIL SHEET
PHASE 3
LOTS 54-63

Pinnacle Surveying
Tim Bollingerworth, PLS
601 W. Woodin Ave., P.O. Box 1107 - Chelan Washington, 98816
509.682.2266 - hollyj@pinnacle.com

DRAWN BY: JH
DATE: 5-16-06
FILE: 206027 PSL/SLC
PROJECT: K1208027/DMC/PLM

SHT 3 OF 6

30/87



LOT DETAIL SHEET
CLOS CHEVALLE P.D.
PHASE 3
 LOTS 53-66

Pinnacle Surveying
 Tim Hollingsworth, PLS
 601 W. Woodruff Ave., P.O. Box 1107, Chula Vista, Washington, 98016
 360.662.2266 - holly@pinnacle.net

DATE: 5-14-08
 DRAWN BY: JH
 LAYOUT: SHEET 4
 FILE: 206027 PSS/LAMS
 PROJECT: # 1206027/DMS/VINAL

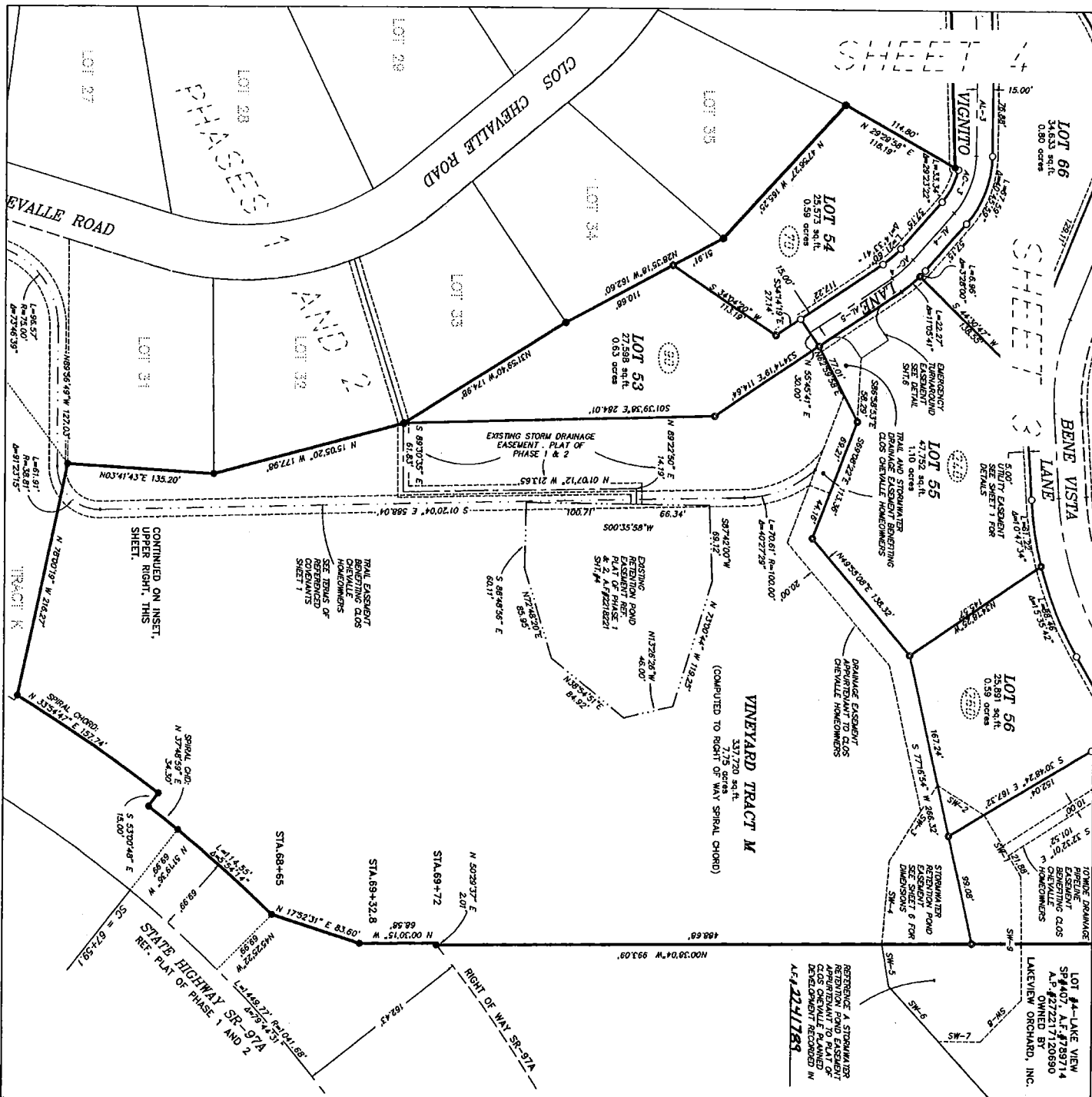
SHT 4 OF 6

LEGEND

- (APPLIES TO ALL SHEETS)
- SET 5/8" REBAR & 2.5" ALUMINUM CAP LSPN1450
- SET 5/8" REBAR & PLASTIC CAP LSPN1450
- ROUND REBAR AND CAP PER PLAT OF PHASE 1 & 2
- FOUND MONUMENT AS NOTED
- COUNTY DESIGNATED PARCEL ADDRESS

SCALE: 1" = 60'

NORTH



LOT DETAIL SHEET
CLOS CHEVALLE P.D.
 PHASE 3
 LOTS 53-55

LOT 53
 27,258 sq. ft.
 0.63 acres

LOT 54
 2,071 sq. ft.
 0.09 acres

LOT 55
 47,752 sq. ft.
 1.10 acres

LOT 56
 25,591 sq. ft.
 0.59 acres

LOT 66
 34,633 sq. ft.
 0.80 acres

LEGEND
 (APPLIES TO ALL SHEETS)
 ● SET 5/8" REBAR & 25" ALUMINUM CAP, L5801450
 ○ SET 5/8" REBAR & PLASTIC CAP, L5801450
 ● FOUND REBAR AND CAP PER PLAT OF PHASE 1 & 2
 ⊕ FOUND MONUMENT AS NOTED
 (Z) COUNTY DESIGNATED PARCEL ADDRESS

TRAIL EASEMENT BRACKETING CLOS CHEVALLE HOMEOWNERS

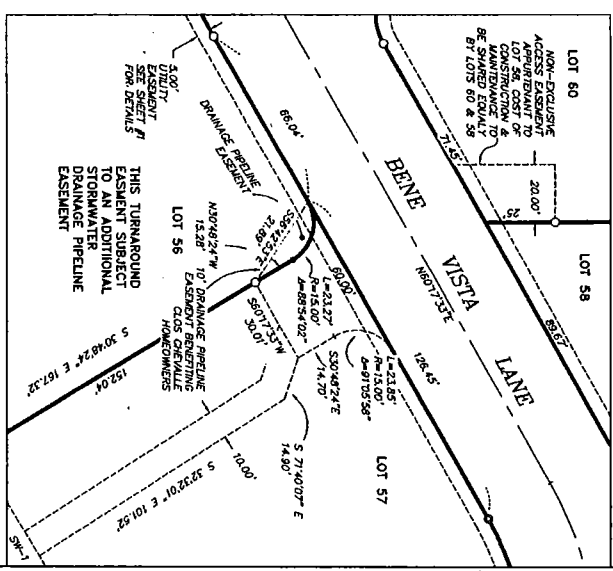
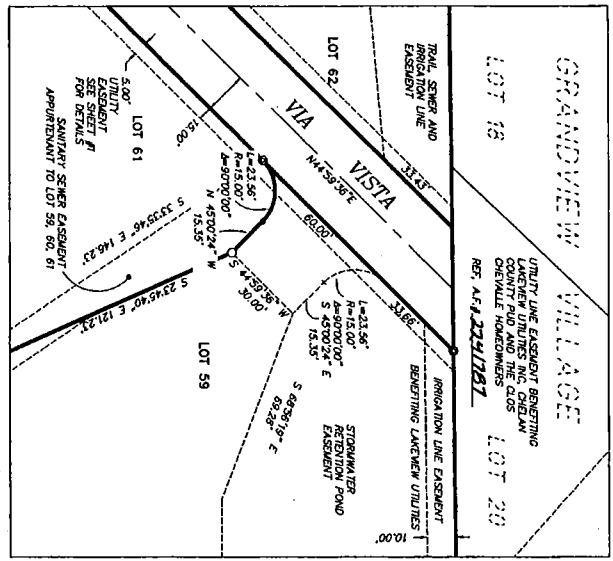
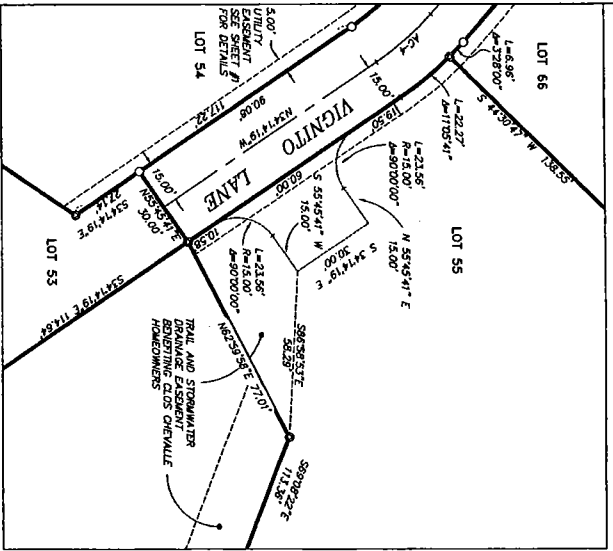
NORTH
 SCALE 1" = 60'
 0 30' 60' 120' 180'

Pinnacle Surveying
 Tina Robinson, PLS
 601 W Woodin Ave., P.O. Box 1107, Chula Vista, CA 92016
 619.422.2266 tina@pinnacle.com

DATE: 5-16-06 FILE: 206027_PSSLOM
 DRAWN BY: TR LAYOUT: SHEETS
 PROJECT: H:\206027\DWG\FINAL

EMERGENCY TURNAROUND EASEMENT DETAILS

LOTS 55, 54 & 53 TURNAROUND; REFER TO SHEET #3
 LOTS 59, 61 & 62 TURNAROUND; REFER TO SHEET #3
 LOTS 56, 57 REFER TO SHEET #3



VIGNITTO LANE: CENTERLINE

(REFER TO SHEET #3)

LINE NO.	BEARING	LINE	LENGTH	DELTA ANG.
VI-1	S84°02'00"E	VI-1	317.2	0
VI-2	S89°11'59"E	VI-2	78.88	89.12
VI-3	S84°42'00"E	VI-3	57.15	0
VI-4	S21°41'58"E	VI-4	50.08	108.88
VI-5	S82°49'02"E	VI-5	50.00	0
VI-6	S82°33'30"E	VI-6	41.27	4727.43
VI-7	S82°17'31"E	VI-7	50.00	0
VI-8	S82°01'30"E	VI-8	50.00	0
VI-9	S81°45'30"E	VI-9	50.00	0
VI-10	S81°29'30"E	VI-10	50.00	0

TRAIL EASEMENT: TRACT L

(REFER TO SHEET #4)

LINE NO.	BEARING	LINE	LENGTH	DELTA ANG.
TL-1	S89°02'27"E	TL-1	11.38	0
TL-2	S89°02'27"E	TL-2	11.38	0
TL-3	S89°02'27"E	TL-3	11.38	0
TL-4	S89°02'27"E	TL-4	11.38	0
TL-5	S89°02'27"E	TL-5	11.38	0
TL-6	S89°02'27"E	TL-6	11.38	0
TL-7	S89°02'27"E	TL-7	11.38	0
TL-8	S89°02'27"E	TL-8	11.38	0
TL-9	S89°02'27"E	TL-9	11.38	0
TL-10	S89°02'27"E	TL-10	11.38	0
TL-11	S89°02'27"E	TL-11	11.38	0

TRACT M STORMWATER POND

(REFER TO SHEET #4)

LINE NO.	BEARING	LINE	LENGTH	DELTA ANG.
SM-1	S89°02'27"E	SM-1	11.38	0
SM-2	S89°02'27"E	SM-2	11.38	0
SM-3	S89°02'27"E	SM-3	11.38	0
SM-4	S89°02'27"E	SM-4	11.38	0
SM-5	S89°02'27"E	SM-5	11.38	0
SM-6	S89°02'27"E	SM-6	11.38	0
SM-7	S89°02'27"E	SM-7	11.38	0
SM-8	S89°02'27"E	SM-8	11.38	0
SM-9	S89°02'27"E	SM-9	11.38	0
SM-10	S89°02'27"E	SM-10	11.38	0
SM-11	S89°02'27"E	SM-11	11.38	0

TRACT L STORMWATER POND

(REFER TO SHEET #4)

LINE NO.	BEARING	LINE	LENGTH	DELTA ANG.
SL-1	S89°02'27"E	SL-1	11.38	0
SL-2	S89°02'27"E	SL-2	11.38	0
SL-3	S89°02'27"E	SL-3	11.38	0
SL-4	S89°02'27"E	SL-4	11.38	0
SL-5	S89°02'27"E	SL-5	11.38	0
SL-6	S89°02'27"E	SL-6	11.38	0
SL-7	S89°02'27"E	SL-7	11.38	0
SL-8	S89°02'27"E	SL-8	11.38	0
SL-9	S89°02'27"E	SL-9	11.38	0
SL-10	S89°02'27"E	SL-10	11.38	0
SL-11	S89°02'27"E	SL-11	11.38	0

LOT 64 DRIVEWAY EASEMENT

(REFER TO SHEET #4)

LINE NO.	BEARING	LINE	LENGTH	DELTA ANG.
LD-1	N02°02'25"W	LD-1	53.04	0
LD-2	N65°39'21"W	LD-2	153.55	89.12

VIA VISTA LANE: CENTERLINE

(REFER TO SHEETS #3 & 4)

LINE NO.	BEARING	LINE	LENGTH	DELTA ANG.
VI-1	N15°47'28"W	VI-1	10.00	0
VI-2	S15°47'28"E	VI-2	10.00	180
VI-3	N81°46'31"E	VI-3	32.61	90
VI-4	S72°59'31"W	VI-4	18.18	180

TRACT M STORMWATER POND

(REFER TO SHEET #4)

LINE NO.	BEARING	LINE	LENGTH	DELTA ANG.
SM-1	S89°02'27"E	SM-1	11.38	0
SM-2	S89°02'27"E	SM-2	11.38	0
SM-3	S89°02'27"E	SM-3	11.38	0
SM-4	S89°02'27"E	SM-4	11.38	0
SM-5	S89°02'27"E	SM-5	11.38	0
SM-6	S89°02'27"E	SM-6	11.38	0
SM-7	S89°02'27"E	SM-7	11.38	0
SM-8	S89°02'27"E	SM-8	11.38	0
SM-9	S89°02'27"E	SM-9	11.38	0
SM-10	S89°02'27"E	SM-10	11.38	0
SM-11	S89°02'27"E	SM-11	11.38	0



Pinnacle Surveying
 Tim Hollingsworth, PLS
 401 W Woodin Ave, P.O. Box 1107, Chicka Washington, 98814
 509.662.2966 - hollyp@pinnacle.com

DIMENSION TABLES AND DETAIL SHEET
CLOS CHEVALLIE P.D.
PHASE 3

SCALE: 1" = 30'
 0 15' 30' 60' 90'

DATE: 5-16-06
 DRAWN BY: TH
 FILE: 206027-4355.DWG
 PROJECT: H:120027-DWG/VNML