

# PLAYBILL

ON PITCH PERFORMING ARTS

#THEATRE MATTERS

## IT'S ONLY A PLAY



FIRST  
COMMUNITY  
BANK

Funded by  
Utah Legislature  
Utah Division of  
Arts & Museums

Rocky Mountain Power  
Foundation

Sylvan  
Learning<sup>sm</sup>

LINK  
EDUCATION  
LEAGUE

HOME<sup>2</sup>  
SUITES BY HILTON



Our Purpose...

# Building our Communities

As a local bank, we build our communities one dream at a time. When you open a checking account, you receive a **\$25 donation token** that can go towards a **bank-sponsored charity**.

**Bank Local**

🏛️ Get your \$25 Donation token today!



## All the tools you need

Every new personal checking account includes...

- ✓ Free Standard VISA® Debit Card
- ✓ Free Mobile Banking
- ✓ Free Mobile Check Deposit
- ✓ Free Thank You \$25 Give
- ✓ Free Online Banking & Bill Pay
- ✓ Free eStatements with check images
- ✓ Free Check Images
- ✓ \$25 Buy Back of old checks/debit cards from another institution

## Bank-sponsored charities

We work with **16 different charities** in Utah. Check out our website **fcbutah.com** to learn more!

**Support Local**

🏛️ Get your \$25 Donation token today!



Unless specified otherwise, customer purchases checks. Other fees such as overdraft, continuous overdraft, etc. may apply. See fee schedule for details. Free \$25 Give to bank-sponsored charities given at the time of account opening. Ask us for details. Bank rules and regulations apply. \$25 for checks and debit cards from another financial institution. Your account will be credited at the time the checks/debit cards are presented.





**IT'S ONLY  
A PLAY  
CAST LIST**

**PETER AUSTIN - ADAM LIVINGSTON**

**JULIA BUDDER - LESLIE BARRETT**

**IRA DREW - DAVID BARRETT**

**FRAKLIN FINGER - ADAM BONE**

**VIRGINIA NOYERS - KRISTIE POST WALLACE**

**JAMES WICKER - MITCH DALEY**

**GUS P. HEAD - PARKER THOMPSON**







**LEGACY** ★  
**PEDIATRIC DENTISTRY**  
 DR. SCOTT FOLKMAN



3225 West Gordon Ave, Suite G; West Layton

**801.544.3400**

Call for an appointment today!



[www.legacypediatricdentistry.com](http://www.legacypediatricdentistry.com)

**A dentist your kids will be excited to go to!**

- ★ Awesome "outer-space" themed office & FUN kid-friendly staff
- ★ TV's above chairs streaming **NETFLIX** for kids
- ★ Specialist in infants, children, teens, special-needs children/adults
- ★ Full range of services, including sedation
- ★ Most insurance accepted, please call with questions
- ★ Check out our Reviews on **Google** & **facebook**.

**\*New Patient Gift**



**\$5 Gift Card**  
of your choice!

\*Must present this coupon on your first visit to receive gift card. Not valid with free Toddler Exam.

**No Insurance Special**

**\$79**

Includes exam,  
X-rays, cleaning,  
& fluoride.

Insurance will be billed, if available, maximum out-of-pocket.

**free toddler exam**  
for kids 2 & under



No out-of-pocket expense.  
Insurance will be billed, if available.



**LEGACY** ★  
**PEDIATRIC DENTISTRY**  
 DR. SCOTT FOLKMAN



# MEET THE CAST



ADAM LIVINGSTON  
PETER AUSTIN



LESLIE BARRETT  
JULIA BUDDER



DAVID BARRETT  
IRA DREW



ADAM BONE  
FRANKLIN FINGER



KRISTIE POST WALLACE  
VIRGINIA NOYES



MITCH DALEY  
JAMES WICKER



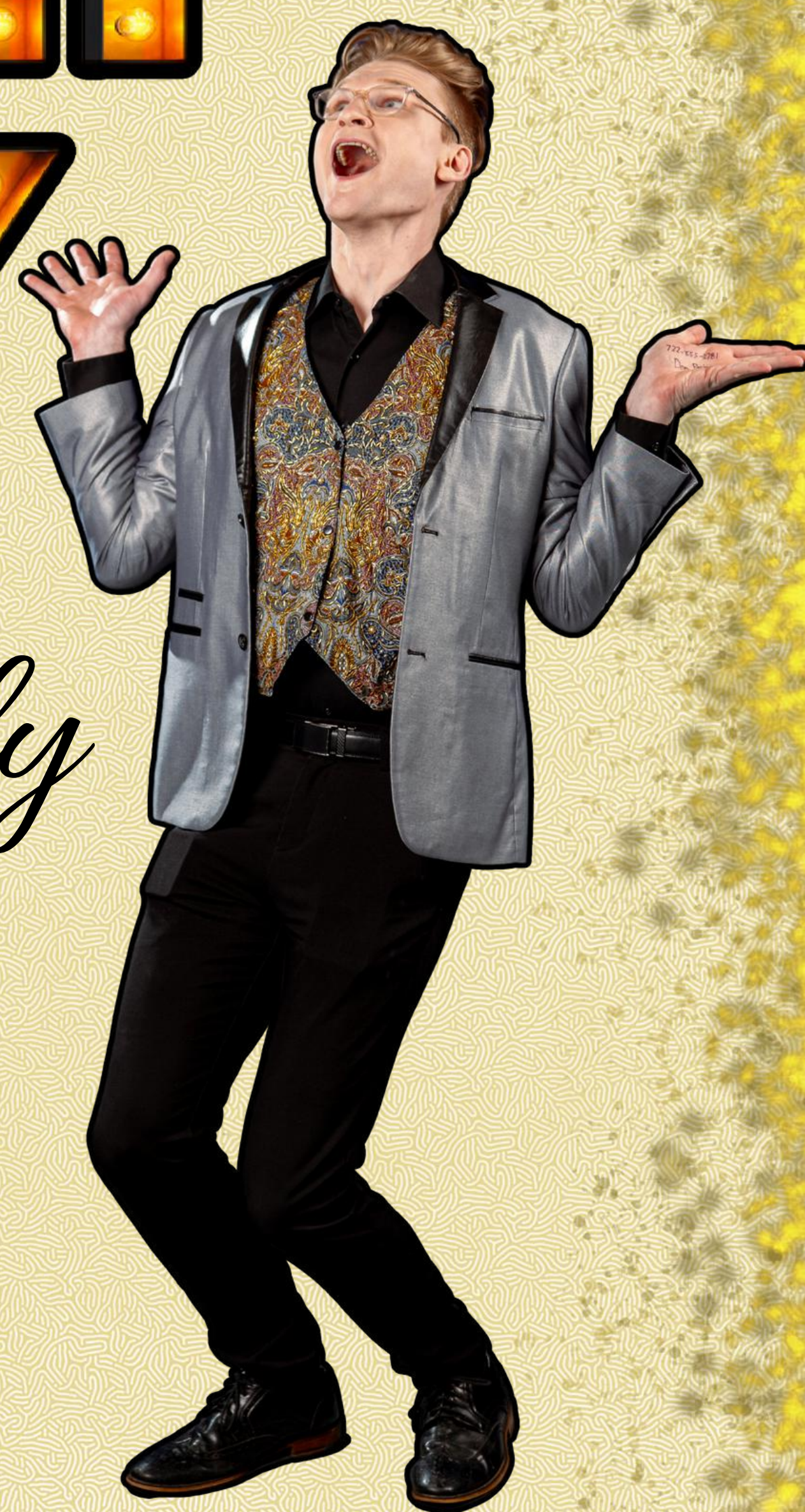
PARKER THOMPSON  
GUS P. HEAD





ON PITCH PERFORMING ARTS PRESENTS:

# IT'S ONLY A PLAY



Written By:

*Terrence McNally*

Direction

*Heather Jackson*

Stage Manager

*Colton Wimmer*

Light Design

*Matt Fewkes*

Sound Design

*Josh Rice*

Costume Design

*Chip Castleton*

Set Design

*Hunter Williams*

Set Build/Paint

*Heather Poulsen*

Props Design

*Tyler Neil*

## OPPA! STAFF

Executive Director

*Brandon Stauffer*

Admin. Coordinator

*Leslie Barrett*

Production Management

*Kennedy Miller*

Education Director

*Ashley Ramsey*

Costume Shop Manager

*Amanda Larsen*

**It's Only a Play Is presented through special arrangement with Dramatists.**

**All authorized performance materials are also supplied by Dramatists.**

**The videotaping or other video or audio recording of this production is strictly prohibited**



Utah  
**REAL**  
Estate.homes

**MATT HAWKES**  
**REAL ESTATE**  
— 801.869.0268 —



**WE SOLD ANOTHER  
HOME IN YOUR AREA!**

**Visit**

***UtHomeValues.com***

**for your Home Value!**

*or scan QR code*



real  
REAL BROKER LLC



# THE SETTING:

It's the opening night of the play *The Golden Egg* on Broadway, and the wealthy producer is throwing a lavish party in her Manhattan townhouse. Downstairs the celebrities are pouring in, but the real action is upstairs in the bedroom, where a group of insiders have staked themselves out to await the reviews. The result? A hilarious combination of narcissism, ambition, childishness, and just plain irrationality that infuse this glimpse behind the scenes.

# DIRECTOR'S NOTE:

They say the best comedy is the comedy you connect with. For those of us in the theatre world—whether it be as directors, actors, critics, or audience members—I don't think there could be a more accurate example than *It's Only a Play*. From the first time I read the script, I was hooked.

Despite being set in the modern era, this play somehow transports me to another time—the Golden Age of Broadway, where shows such as *Oklahoma*, *West Side Story*, and *My Fair Lady* were all the rage and stars like Ethel Merman and Julie Andrews became household names. Even though I never experienced this period of time in theatre history, I am astounded at how little it has changed. The opening night jitters still exist. Producers still cheer on their actors. And the reviews still keep us pacing the floor. I hoped to convey these ever-present highs and lows of theatre in our production, with plenty of comedy along the way!

I've been honored with the title of "director" for this show, but none of this could have happened without the phenomenal production team and cast I was blessed to work with. Most directors could only dream of working with designers, crew members, and actors as talented as these. I want to thank each of them for their patience, their dedication, and the many, many hours they spent both in and outside rehearsal to make this show a success.

I want to thank my family for supporting my passion and sacrificing hours with me so I could focus on the show. I love you! Thank you to On Pitch Performing Arts for the opportunity to bring this show to the stage. And finally, thanks to all of you for attending!

*Heather Ann Jackson*







# LINK EDUCATION LEAGUE

Helping students become:

CREATIVE

COLLABORATIVE

COMPASSIONATE

CRITICAL THINKERS

What does learning at Link Education League look like?

Scan the QR code to see it in action!



LEARN MORE & APPLY AT [LINKEDUCATIONLEAGUE.COM](https://LINKEDUCATIONLEAGUE.COM)



EDUCATION  
FOR THEIR FUTURE  
NOT OUR PAST

NOW ENROLLING!



# A CHORUS LINE



*OPPA!*  
On Pitch Performing Arts

Main Stage APRIL 11 – APRIL 27, 2024



# INTO THE WOODS

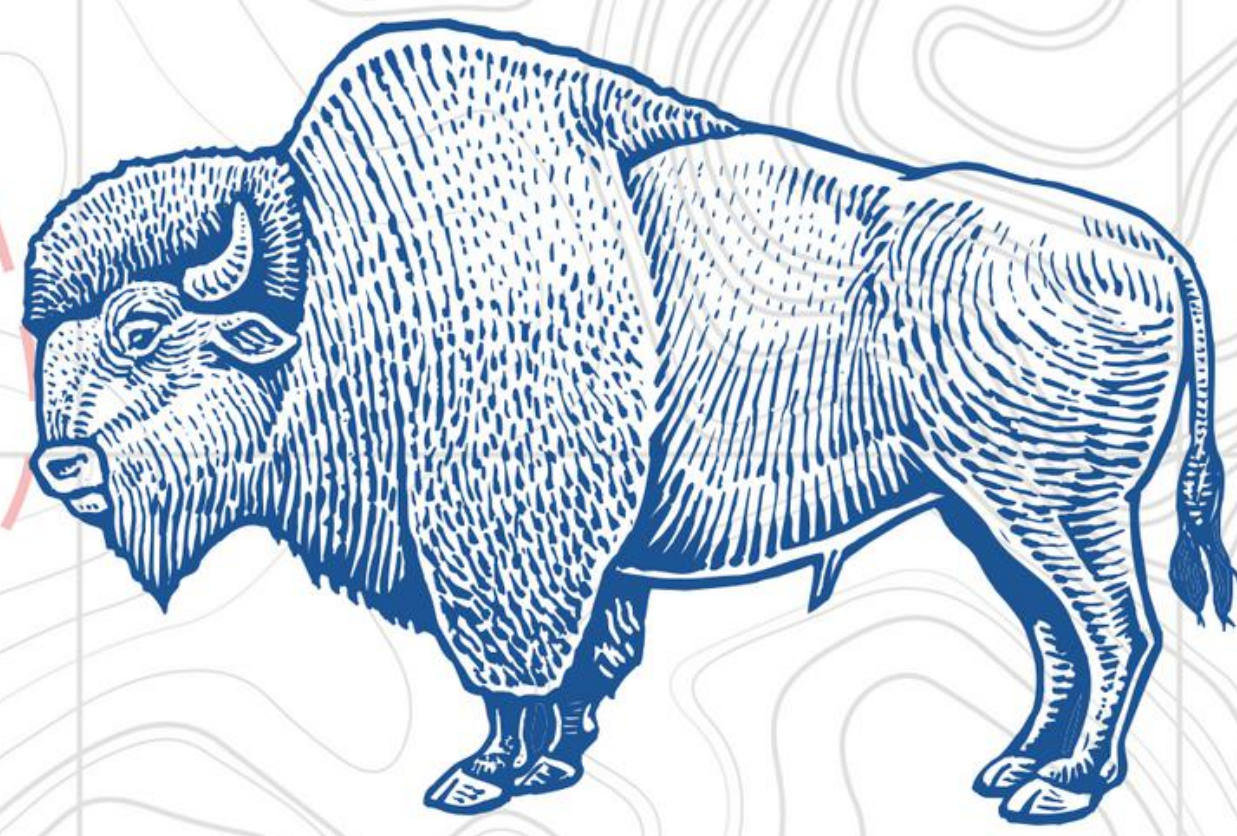


*OPPA!*  
On Pitch Performing Arts

Main Stage

JUNE 21 - JULY 13, 2024





## **FOUND IN DAVIS COUNTY**

**Intermountain expertise with Davis County convenience is now available right in your backyard.**

**Layton Hospital provides a comprehensive complement of services, including:**

### **EMERGENCY**

Trauma Level III  
Stroke Receiving Center  
Observation Unit  
TeleHealth Integration  
Accelerated Care Model

### **WOMEN'S HEALTH**

Labor & Delivery  
Simply Birth  
NICU  
Outpatient Lactation  
24/7 Laborist Coverage

### **SURGICAL**

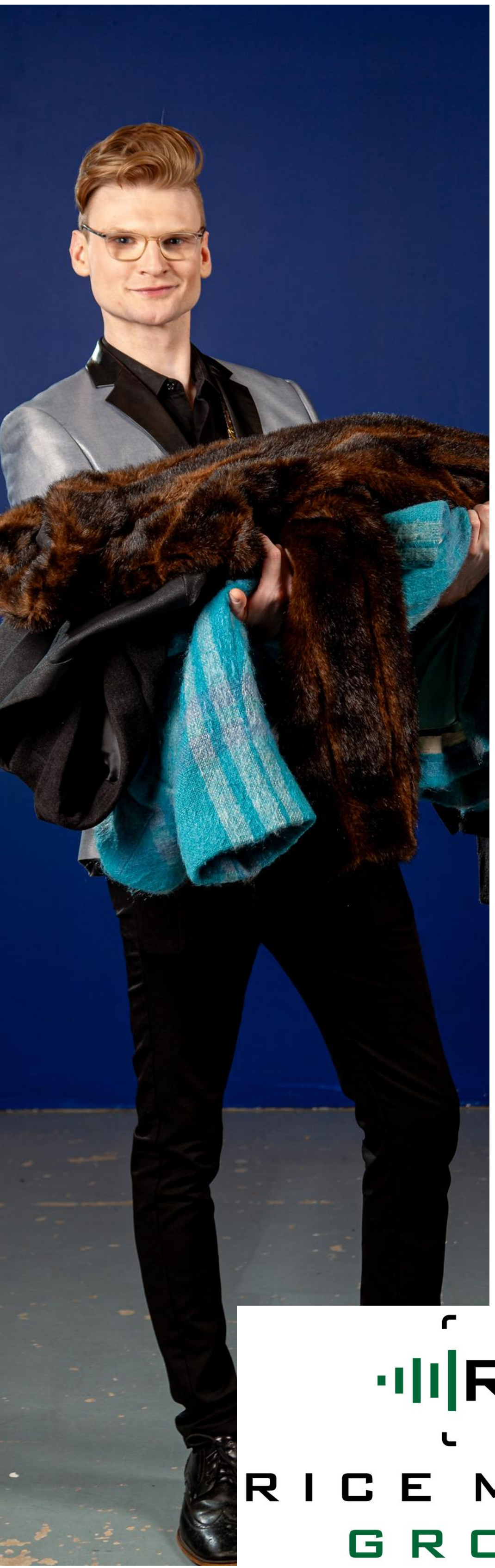
Robot Assisted Surgeries  
Orthopedics  
General Surgery  
Same Day/Endo/GI  
GYN Surgeries


To learn more about our services or find a provider, visit  
*[LaytonHospital.org](http://LaytonHospital.org)*



**Intermountain<sup>®</sup>  
Layton Hospital**





  
RICE MEDIA  
GROUP







# HOME 2 SUITES LAYTON


803 Heritage Park Blvd  
Layton, UT 84041

## OUR HOTEL FACILITIES

---

- ✓ Extended Stay Hotel
  - ✓ Swimming pool
  - ✓ Kitchenettes
  - ✓ 24 Hour Fitness Room
  - ✓ Outdoor BBQ Grills
  - ✓ Much More
- 

CONTACT US

 801-820-9222



# KEEP MOVING FORWARD with Sylvan!



## SYLVAN HAS EXACTLY WHAT YOU NEED

More than 7 million parents have trusted Sylvan to deliver results. No matter what your family's needs are, we have solutions to help. And we've adapted to the new ways kids are learning.

### IN CENTER TUTORING

Personalized support from our great teachers!

- Get personalized attention with in person, face-to-face sessions
- Get guided support that is personalized to your child.
- Work on skill gaps
- Get ahead and master new skills

Mention "OPPA"  
for a 20%  
discount

### Online Classes

Same great teachers, from the comfort of your home.

- Teachers lead live, small group classes ( 1 Teacher to 2 students)
- Skills and confidence growth to be ready for the next school year
- Interactive and fun activities to keep kids engaged and spark a love of learning

Classes start with a monthly as low as **\$299/mo.**

### Homework Support

Valid only at Sylvan Learning of Layton or Bountiful

Core 4 ( up to 4 hrs. a month)  
Basic 8 ( up to 8 hrs. a month)  
Super 16 ( up to 16 hrs. a month)

Monthly packages starting @  
**\$200 a month**

### Sylvan of Layton

575 N Main Street

**801-543-4400**

layton.ut@sylvanlearning.com

### Sylvan of Bountiful

845 S Main Street Ste. B5

**801-543-4400**

Layton.ut@sylvanlearning.com



# Our exclusive Creators Club

## **PATRON:**

Amanda Larsen

Amy Shaffer

Danielle Bendinelli

Dave Green

Michelle Green

Eric Ludlow

Glenda & Rob Smith

Heather Ann Jackson

Joshua Rice

Kelly Silvester

Leslie Barrett

Mandie Harris

Teresa Howell

Jeff Duncan

## **SUPPORTER:**

Anne Jones

Ashley Ramsey

Terry Davis

Caitlin Olsen

Chelsea Morris

Matt Higgins

Natalee Stuart

Sommer Ellsworth

Tyler Neil

Anonymous

## **ADMIRER:**

Chris & Jen Morgan

## **ENTHUSIAST:**

Rachel Helwig

Dan Tate

Creator Club Members are our most passionate supporters, and their monthly giving ensures that our mission will continue.

The support we receive from the Creators Club allows us to create children's theatre, community theatre, produce new works, and expand the arts in our community.

Select perks may include: Priority performance seating, Exclusive Creator Club events, Advance ticketing opportunities, Autographed cast memorable, gift shop discounts and VIP invitations.

All club members receive complimentary access to select performances of shows in our Creator's Stage series.

**OPPA!**  
On Pitch Performing Arts

**Thank You is never enough.**



# CAST AND CREW

*Adam Bone  
(Franklin Fingers)*



Adam is ecstatic to do his second play with On Pitch Performing Arts. He is very excited to be on the stage again after his last role as Steve in *Almost, Maine* at Heritage Theater last year. In his spare time he enjoys cooking, growing sprouts, and watching horror movies.

*Adam Livingston  
(Peter Austin)*



Adam had been passionate about theatre his whole life and is so grateful (and thrilled) to be back on stage. He never feels more alive than when he is performing. Some of his favorite roles include Mortimer Brewster (*Arsenic and Old Lace*) and Jack Worthing (*The Importance of Being Earnest*). He could not do any of this without the support of his amazing wife, Kayla, whom he loves beyond measure.

*David Barrett  
(Ira Drew)*



After decades of supporting his amazingly talented family in their endeavors, David has found his love for the stage. This will be his fifth production with OPPA! and his third show performing alongside his lovely wife.

*Kristie Post Wallace  
(Virginia Noyes)*



Kristie Post Wallace is a Salt Lake City-based theatre artist and works as an actor, writer, and director and is dedicated to theatre that inspires a world of curiosity, community, and inclusion, focusing on stories that center on women and marginalized people. Kristie is grateful and jazzed to be on stage again, especially at OPPA! Notable roles include Dotty/Mrs. Clackett (*Noises Off!*), Helsa Wensel (*The Musical Comedy Murders of the 1940s*), Heidi (*Fuddy Meers*), and Maria (*Twelfth Night*). Kristie has an MFA in Directing from the University of Washington School of Drama and is an Associate Member of SDC. Contact at [www.kristiepostwallace.com](http://www.kristiepostwallace.com). ∞]BEB

*Leslie Barrett  
(Julia Budder)*



Leslie is thrilled to be able to do this production with so many talented actors, including her husband! She is so grateful for the loving support of her 5 children and the OPPA! Family. She has always loved performing and hopes to continue to do so for years to come.

*Mitch Daley  
(James Wicker)*



Mitch is thrilled to embody James, "the miserable no-talent sitcom fruit," and hopes his portrayal brings some laughter into your life. Some of Mitch's favorite previous roles include: Man in Chair (*The Drowsy Chaperone*), Norman Bassett (*Cash on Delivery*), and Puck (*A Midsummer's Night Dream*). Beyond the stage, Mitch extends his gratitude to Sunshine, whose unwavering support and positivity serve as a beacon of light, illuminating even his darkest days.

*Parker Thompson  
(Gus)*



After over 5-years of being away from the stage, Parker is excited to be back on the stage in this hilarious play.



# CAST AND CREW

*Chip Castleton*  
*Costume Designer*



Chip is an icon who has been creating random stuff since the day their mother popped them out of the womb. They have a passion for all things gay and all things design. They live laugh love theatre and would like to thank their fiancée Zendaya and their little sister Kiersti for helping them get to where they are today.

*Colton Wimmer*  
*Stage Manager*



This is Colton's first time being on the production staff for OPPA. He was last seen on stage in OPPA's Little Mermaid in the ensemble. He's extremely excited to be the Stage Manager of Its Only A Play

*Heather Ann Jackson*  
*Director*



Heather is delighted to be back in the director's seat for OPPA's production of It's Only a Play. She loves watching a story come to life on stage. When she's not at the theater, Heather moonlights as a high school English teacher and young adult author. She wants to thank her friends and family for their support, especially her husband, Philip, and their children.

*Hunter Williams*  
*Set Designer*



Hunter Williams attended DaVinci Academy of Science and the Arts, moving through his time at school in many leadership and performance positions in his schools theatre dept. After high school, Hunter graduated and was accepted into Cornish College for the Arts in Seattle Washington. Hunter then began persuing choreography and performance opportunities at On Pitch Performing Arts where his dedication, talent, and work ethic earned him a position as an Ambassador for the theatre, in which he has remained for the past 3 years. Hunter is so excited for you to see the show! Thank you for being a part of my creative journey!

*Josh Rice*  
*Sound Design*



Josh has enjoyed working on this production and hopes you enjoy the show!

*Matthew Jewkes*  
*Lighting Designer*



Matt is a big fan of all things theatre and is excited to help you see the action!

*Tyler Neil*  
*Props Designer*



Tyler has enjoyed working on this production and hopes you enjoy the show!