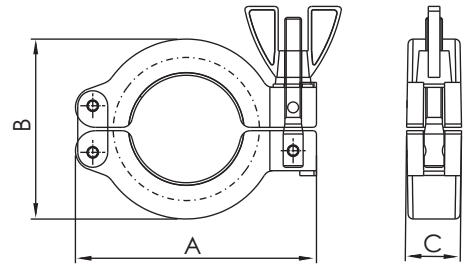


KF Hardware & Seals

KF WING-NUT CLAMPS TYPE 1

*Die-Casting Aluminum Clamp

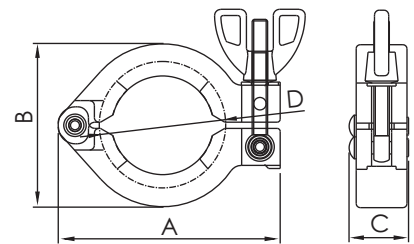


Part Number	Size	A	B	C
KF-WC1-16	KF10/16	62.00	42.00	16.50
KF-WC1-25	KF25	72.00	53.50	16.50
KF-WC1-40	KF40	89.50	69.50	16.50
KF-WC1-50	KF50	113.00	90.00	20.00

**KF
DN**

KF WING-NUT CLAMPS TYPE 2

*Die-Casting Aluminum Clamp



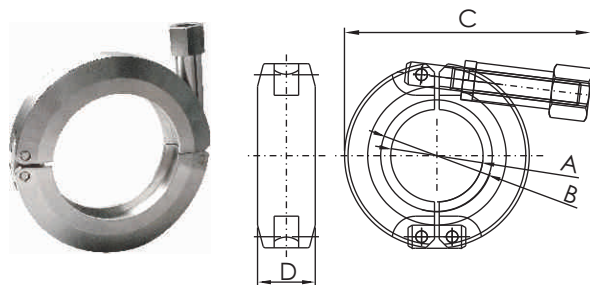
Part Number	Size	A	B	C	D
KF-WC2-16	KF10/16	62.70	41.40	19.30	32.60
KF-WC2-25	KF25	72.00	53.10	19.30	42.00
KF-WC2-40	KF40	90.00	70.20	19.30	58.80
KF-WC2-50	KF50	113.40	93.40	22.80	79.60

KF Hardware & Seals

KF CNC SS304 CLAMPS

*CNC Machined Clamp Manufactured from SS304 for Extra Rigid Strength and Durability.

*Integral Latching Mechanism can Prevent Unintentional Opening.



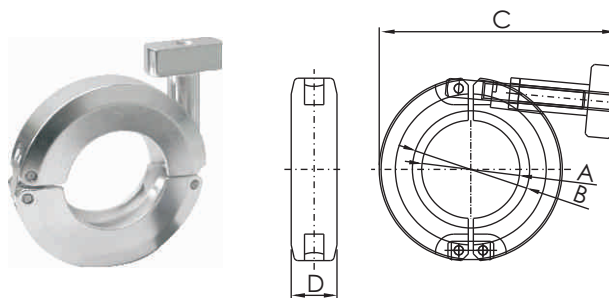
Part Number	Size	A	B	C	D
KF-CC-16	KF10/16	25.40	30.80	68.00	15.90
KF-CC-25	KF25	34.12	40.94	80.63	15.90
KF-CC-40	KF40	49.40	55.70	87.20	15.90
KF-CC-50	KF50	69.00	75.60	109.30	15.90

KF CNC ALUMINUM CLAMPS

*CNC Machined Clamp Manufactured from Aluminum Solid Bar for Extra Rigid Strength and Durability.

*3 Times Tensile Strength than Die-Casting Clamps.

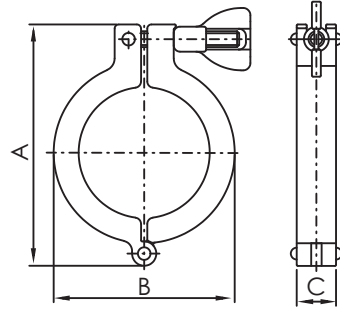
*Integral Latching Mechanism can Prevent Unintentional Opening.



Part Number	Size	A	B	C	D	Max Pressure
KF-CC-16-AL	KF10/16	25.40	30.80	70.20	15.90	300 PSI
KF-CC-25-AL	KF25	34.12	40.94	82.66	15.90	270 PSI
KF-CC-40-AL	KF40	49.40	55.70	90.80	15.90	250 PSI
KF-CC-50-AL	KF50	69.00	75.60	113.00	15.90	-

**K F
D N**

KF Hardware & Seals

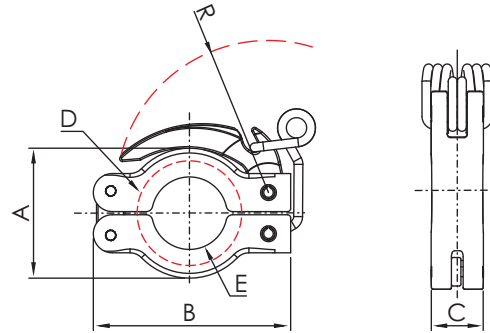


KF NW CLAMPS

*Clamp Material: SS304

Part Number	Size	A	B	C
KF-WC1-16-04	KF10/16	59.5	33.5	16.0
KF-WC1-25-04	KF25	73.0	48.0	16.0
KF-WC1-40-04	KF40	89.0	63.0	16.0
KF-WC1-50-04	KF50	112.5	80.0	20.0

**KF
DN**



KF QUICK CLAMPS

*Clamp Material: Aluminum

Part Number	Size	A	B	C	D	E	R
KF-QC-16	KF10/16	41.00	62.30	16.50	16.50	11.94	48.00
KF-QC-25	KF25	54.00	72.40	16.50	22.00	16.64	56.00
KF-QC-40	KF40	69.00	89.70	16.50	29.00	24.26	72.37

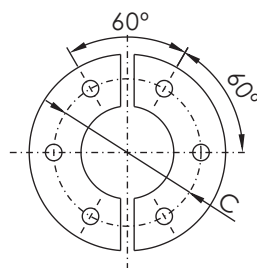


Figure 1

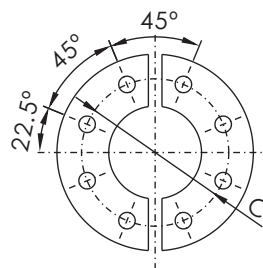
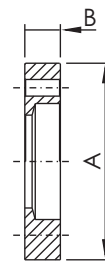


Figure 2



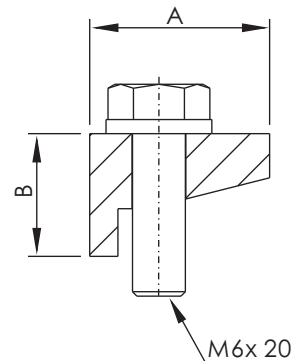
KF BULKHEAD (Clamps) SETS

*Clamp Material: Aluminum

Part Number	Size	Figure	A	B	C	Bolt Hole Size	No of Bolt Holes	Bolt Size
KF-BCS-16	KF10/16	1	50.80	9.20	38.10	4.30	6	10-32UNF-15.9L
KF-BCS-25	KF25	1	60.30	9.90	48.00	5.30	6	10-32UNF-15.9L
KF-BCS-40	KF40	1	74.60	9.30	62.00	5.30	6	10-32UNF-15.9L
KF-BCS-50	KF50	2	95.20	10.30	82.55	5.30	8	10-32UNF-15.9L

KF WALL CLAMPS

*Material: Aluminum

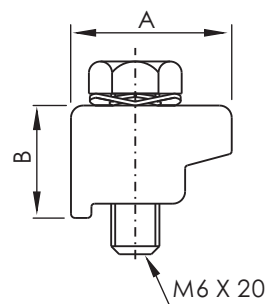


Part Number	Size	A	B
-------------	------	---	---

KF-WC2-1650	KF16~KF50	20.40	13.90
-------------	-----------	-------	-------

KF WALL CLAMPS with BOLTS

*Die-Casting Aluminum Clamp



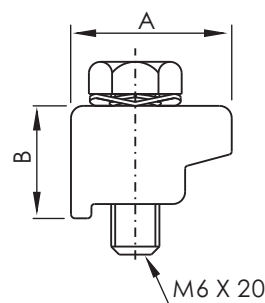
Part Number	Size	A	B
-------------	------	---	---

KF-WC1-1650	KF16~KF50	20.00	15.00
-------------	-----------	-------	-------

KF SINGLE CLAW CLAMP KIT

*Material: SS 304

*4pcs in 1 pack



Part Number	Size	A	B
-------------	------	---	---

KF-SC-1650	KF16~KF50	20.00	14.00
------------	-----------	-------	-------

**KF
DN**