

**WYSONG HM SERIES
HYDRA-MECHANICAL
SQUARING SHEARS**

1010 HM

**INSTRUCTIONS FOR
INSTALLATION, CARE AND USE**

MODEL NUMBER: _____

SERIAL NUMBER: _____

Before installing your shear, it is recommended that the operation, maintenance and production personnel become familiar with all safety guidelines, operating details and construction of the shear.

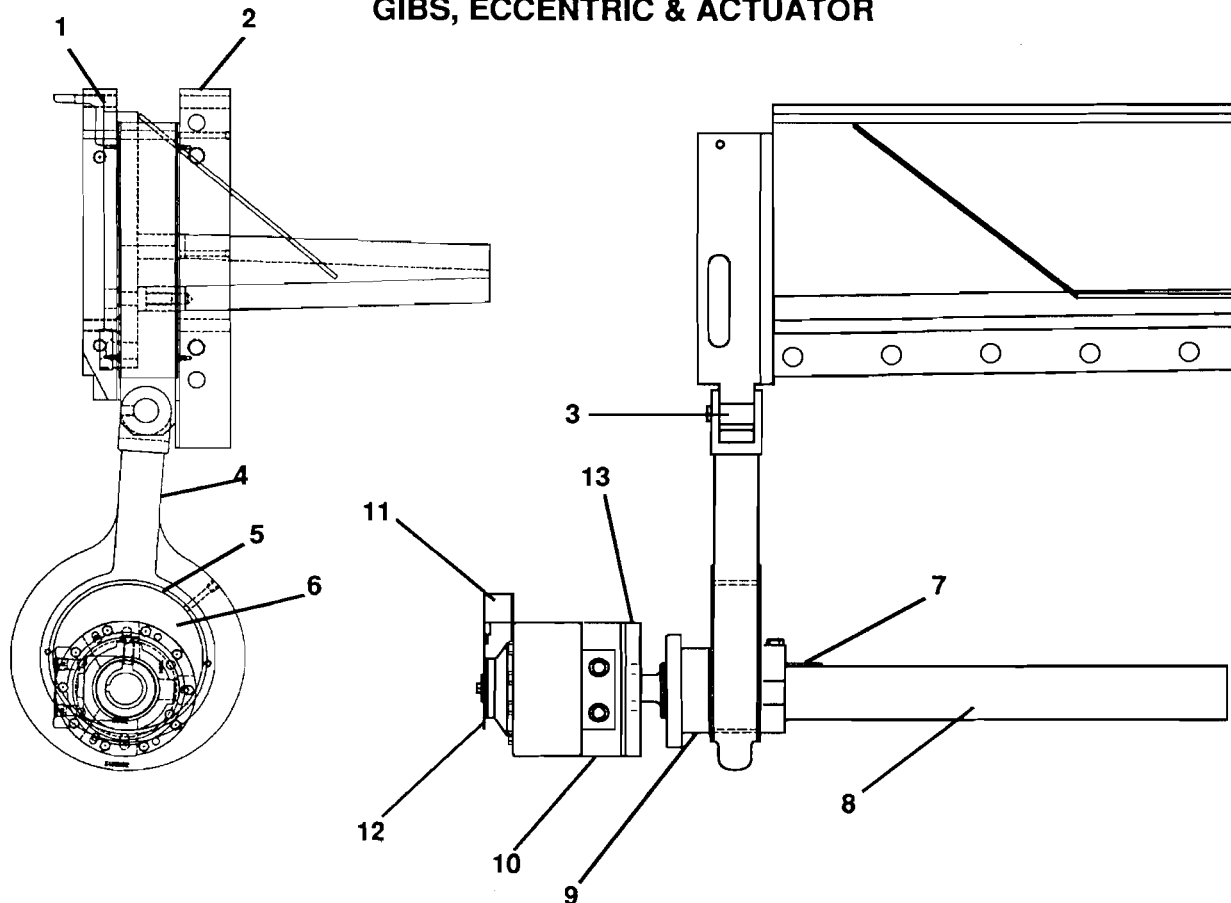
This manual outlines general installation, operation and maintenance of your shear. For safety procedures, refer to the Wysong Shear Safety Manual.

In writing or calling us for information, please refer to your shear by model and serial number. These can be found on the metal name plate on the front of the holddown, and the stamping on the right hand end of the bed.

If a problem arises that is not covered in the manual, contact our Customer Service Department.

WYSONG & MILES COMPANY
4820 U.S. 29 NORTH • POST OFFICE BOX 21168
• GREENSBORO, NC 27420-1168
• FAX: 919-375-6187
• TELEPHONE: 919-621--3960

GIBS, ECCENTRIC & ACTUATOR



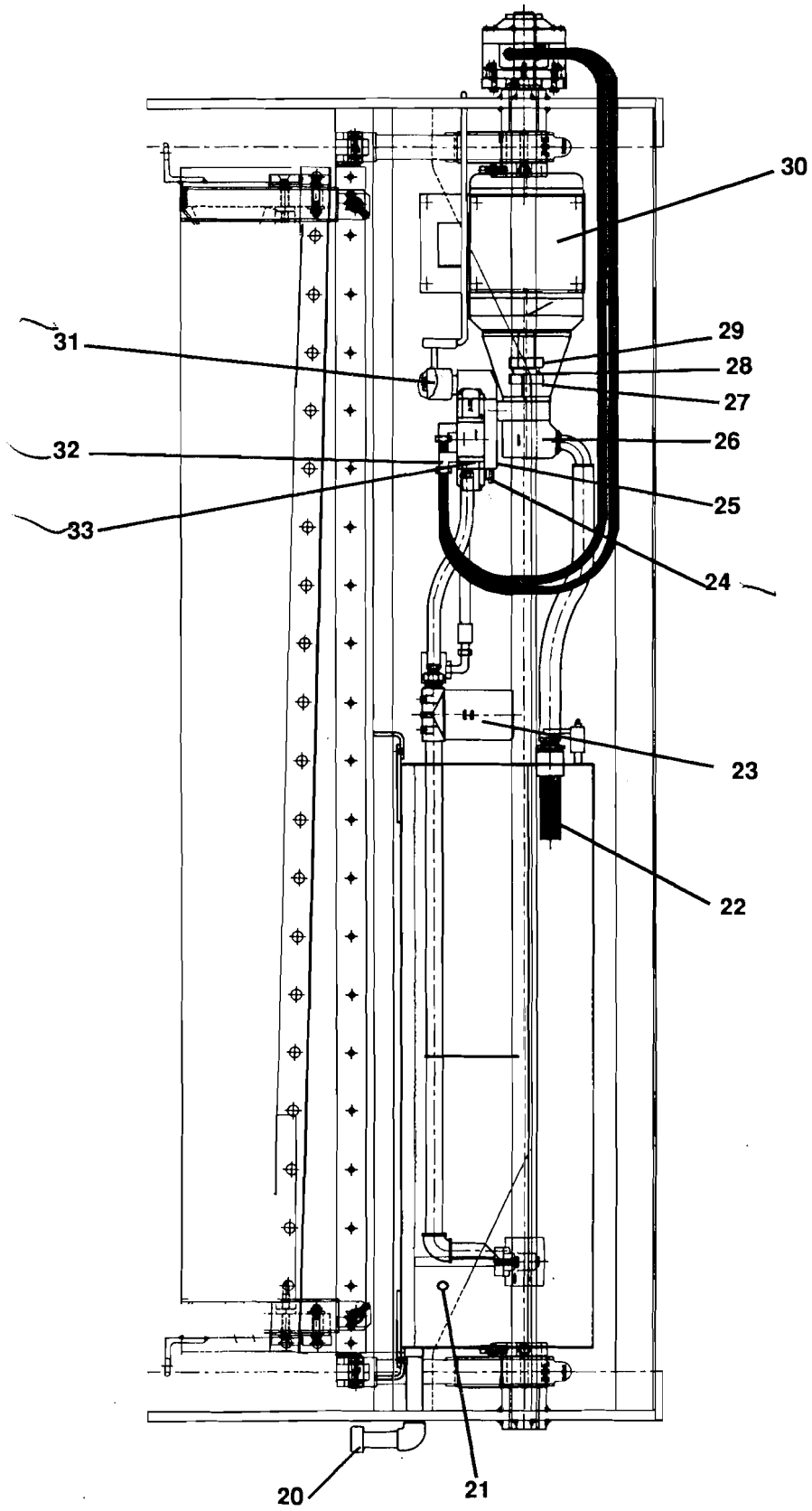
GIBS, ECCENTRIC & ACTUATOR

ITEM	DESCRIPTION	QUANTITY
1	Take-up Gib	2
2	Rear Gib	2
3	Connecting Pin	2
4	Strap, Eccentric	2
5	Bushing	2
6	Eccentric	2
7	Key	2
8	Shaft, Eccentric	1
9	Bearing, Eccentric Shaft	2
10	Actuator	2
11	Switch	1
12	Trip	1
13	Plate, Actuator Mounting	1

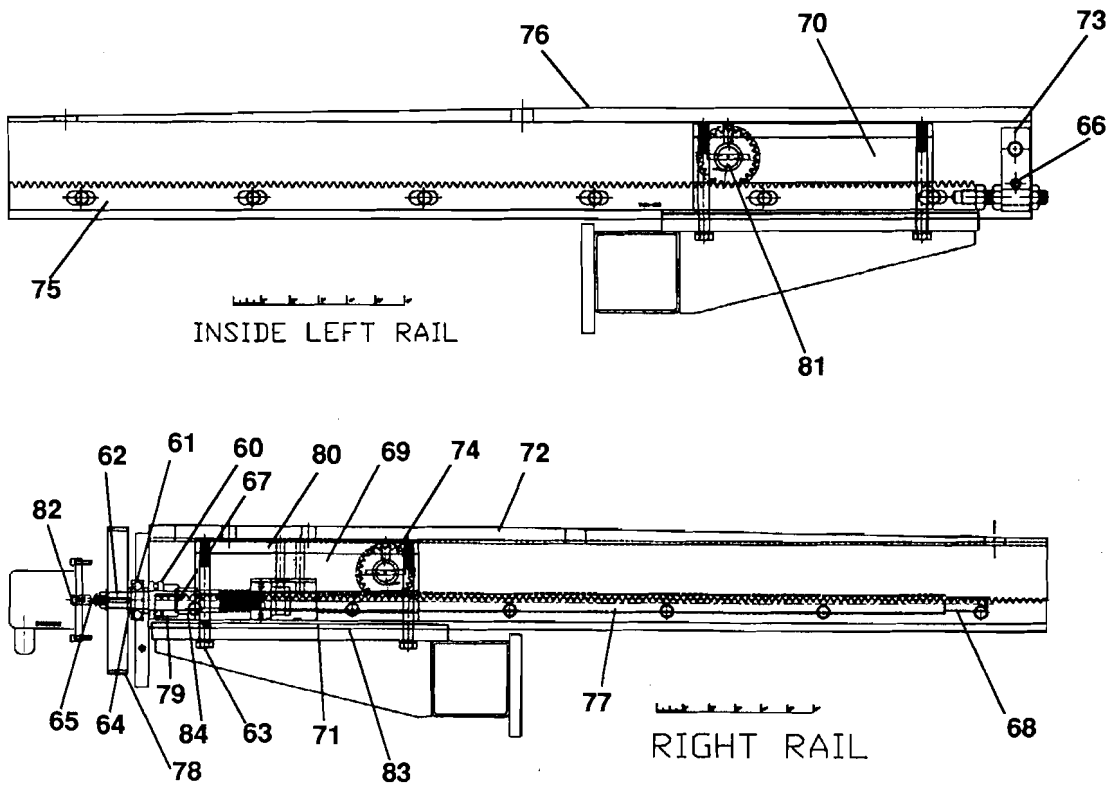
HYDRAULIC GROUP

ITEM	DESCRIPTION	QUANTITY
20	Breather Cap	1
21	Oil sight Gauge	1
22	Filter, Suction	1
23	Filter, Return	1
24	Valve, Relief	1
25	Manifold	1
26	Pump	1
27	Coupling, Pump	1
28	Insert	1
29	Coupling, Motor	1
30	Motor	1
31	Valve, Two Way	1
32	Valve	1
33	Valve, C'Bal	1

HYDRAULIC GROUP

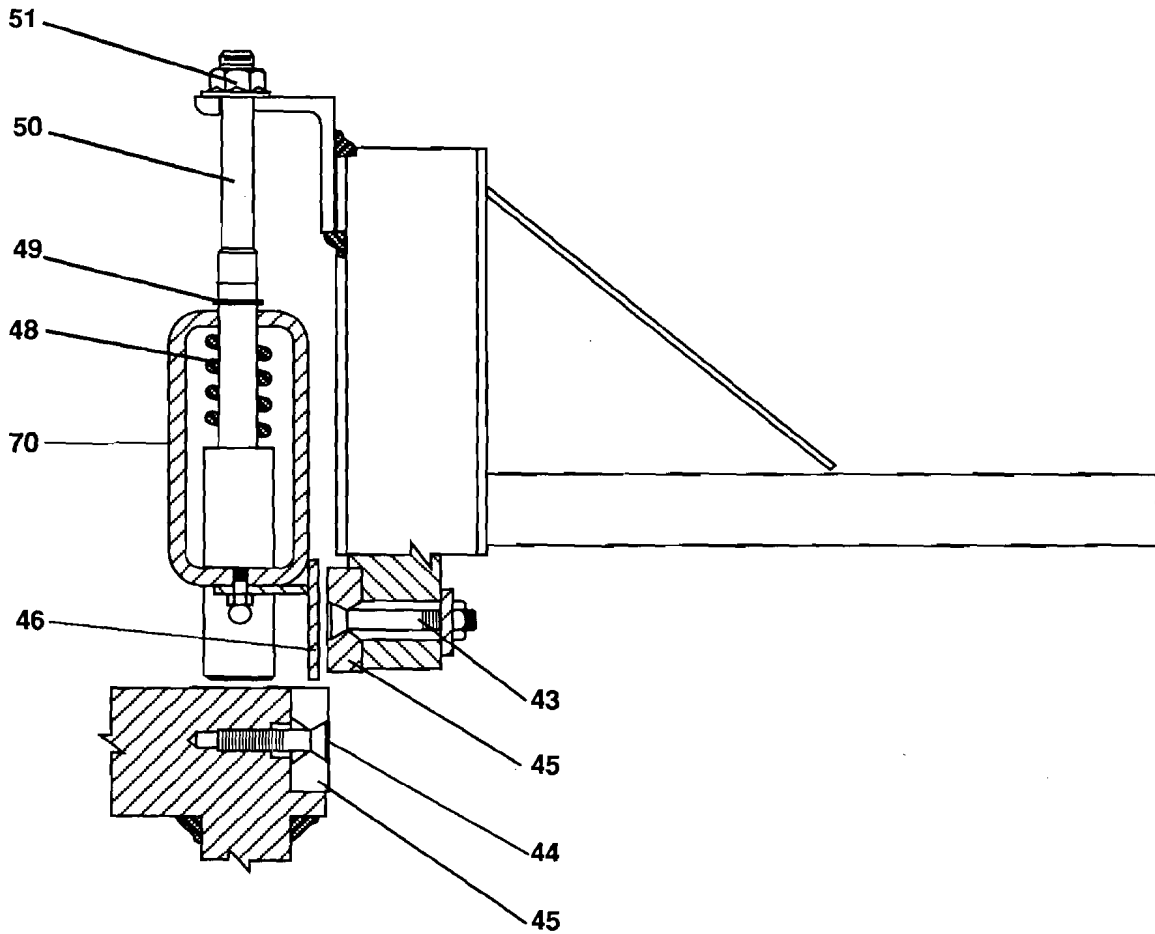


POWER BACK GAUGE



ITEM	DESCRIPTION	QUANTITY
60	Bearing Thrust	1
61	Bearing	1
62	Key	1
63	Spacer	1
65	Pin, Roll	1
66	Pin, Dowel	1
67	Ring	1
68	Screw, Back Gauge	1
69	Micarta Slide, R.H.	1
70	Micarta Slide, L.H.	1
71	Micarta, Spacer	1
72	Rail, R.H. Belt Drive	1
73	Block, Rack Adj.	1
74	Pinion	1
75	Rack L.H.	2
76	Rail, L.H.	1
77	Rack, R.H.	1
78	Pulley, Drive, 48 T	1
79	Washer, Retaing Ring	1
80	Bar, Slide Clamp	1
81	Shaft, Back Gauge Pinion	2
82	Shaft, Encoder	1
83	Shim,	2
84	Bumper	1

HOLDDOWN & BLADES



ITEM	DESCRIPTION	QUANTITY
43	Bolt, Blade Upper	21
44	Bolt, Blade Lower	21
45	Blade	2
46	Guard, Holddown Finger	1
47	Holddown	1
48	Spring	18
49	Ring, Retaining	18
50	Pin, Holddown	18
51	Nut, Lock	18