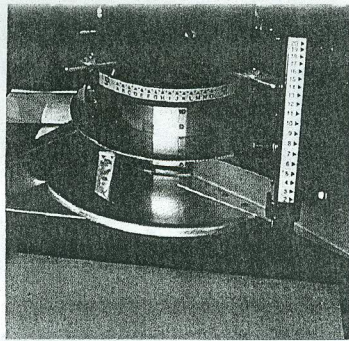


NORDSTEN

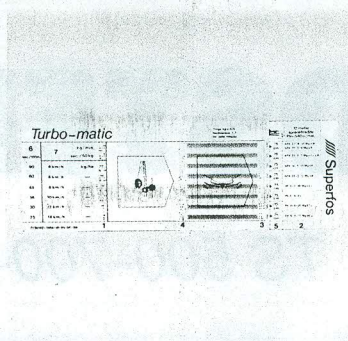
Turbo-matic TS 500-700-800-1000-1200



- Remote control of distribution rate, left/right distribution and cut-off is standard equipment on the cable controlled model.
- Built-in precision. - Developed especially for tramline work.
- »Tailored« to 10/12 m spreading width with a possibility of easy adjustment to 15 m.
- Wide low-profile hopper for easy filling.
- Easily operated and maintained.
- Robust and functional design with dosing cup and spinning disc in rustless materials.
- The spreading width can be maintained irrespective of distribution rate and fertilizer type.
- 5 models available from 500 - 1200 kg capacities.



Precision is decisive when using tramlines. Therefore, the NORDSTEN Turbo-matic is made for 10, 12 and 15 m spreading width respectively, which is maintained irrespective of fertilizer rate and type. Dosing cup and spinning disc are made of rustless materials. Easy cleaning due to simple disassembling of dosing cup and spinning disc.



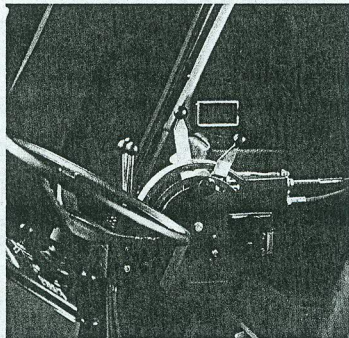
Each Turbo-matic is supplied with Thrige Agro's slide table, which simplifies correct adjustment for the fertilizer types generally used.

The table is based on experiments and tests carried out in Thrige Agro's own test laboratory.

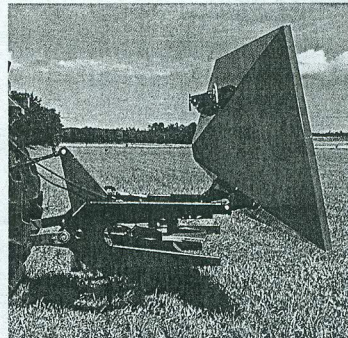


The sieve removes lumps, stones etc. from the fertilizer and thus you avoid incorrect dosing and damage to the spreading unit.

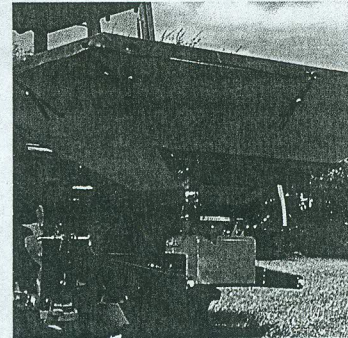
A wide, low-profile hopper makes filling easy, whether carried out manually or mechanically.



Remote cable operation allows left/right distribution and complete cut-off to be controlled from the tractor cab.



Tilting hopper gives full access for cleaning and for mounting of spreader.



From the wide range of optionals: cover protecting the fertilizer against humidity and dirt, and application rate test equipment facilitating test of rate adjustment.

Technical specifications for the Nordsten Turbo-matic:

	TS 500	TS 700	TS 800	TS 1000	TS 1200
Length, cm	130	130	145	145	145
Width, cm	174	174	195	195	195
Filling height, cm	82	91	90	96	103
Weight, empty, kg	145	157	159	168	174
Contents l/approx. kg	483/500	684/700	709/800	891/1000	1073/1200
Distribution rate kg/min.	10-200				
Distribution rate control	Remote or manual				
Left/right distribution	Remote or manual				
Hitch pins (2 sets of holes)	Cat. I/II				
PTO revs./minute	540				
Centre of gravity from lift eye, cm - cat. I/II	65.5/56.5				
Required lift capacity at lift eye, kg	8-900	10-1100	12-1300	14-1500	17-1800

Standard equipment:

- Dosing device for 10/12 m distribution width
- PTO drive shaft
- Instruction manual + spreading tables (slide-table) for 10 and 12 m distribution width

Standard equipment for TS cable model only:

- Remote control of rate and left/right distribution
- DS holder for handles in the tractor
- DS holder for handles on the machine

Optional equipment:

- Hopper extension for 700 kg capacity for TS 500
- Hopper extension for 1000 kg capacity for TS 800
- Hopper extension for 1200 kg capacity for TS 800
- Cover for TS 500 and TS 700
- Cover for TS 800, TS 1000 and TS 1200
- Sieve
- Trailer hitch
- Application rate test equipment
- High lift hitch - lifts the machine 30 cm - for late application
- Dosing cup 15 m + slide table
- PTO guard
- Lift bracket kit, 95 mm back
- Lift bracket kit, 150 mm up
- Lift bracket kit, 80 mm back, 150 mm up
- Extra lever bracket holder in tractor cab
- Wide-angle PTO drive shaft
- AGRO PLUS 2000 - fieldcomputer

We reserve the right to make modifications.

Dealer:

THRIGE AGRO

Export, Europe:
Gyrovej 1-5 • 7800 Skive
Denmark
Tel.: +45 7 52 15 00
Telex: 66725 gyro dk
Fax: +45 7 51 00 51

Export, overseas:
Nordstensvej 1-7 • 3400 Hilleroed
Denmark
Tel.: +45 2 26 55 22
Telex: 42126 nordst dk
Fax: +45 2 26 06 32