

NORO Summer Tee Knit Along

featuring patterns from NORO Magazine issue 22



Amami

<https://www.ravelry.com/patterns/library/amami-3>



Bisect

<https://www.ravelry.com/patterns/library/bisect>



Cape Manzamo

<https://www.ravelry.com/patterns/library/cape-manzamo>



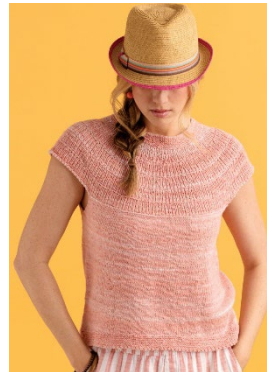
Elevation

<https://www.ravelry.com/patterns/library/elevation-4>



Filigree

<https://www.ravelry.com/patterns/library/filigree-18>



Riven

<https://www.ravelry.com/patterns/library/riven-5>



More Than One Direction

<https://www.ravelry.com/patterns/library/more-than-one-direction>



Tsunoshima

<https://www.ravelry.com/patterns/library/tsunoshima>

Begins Sunday, April 7th at 1pm Additional meet dates 4/14, 21 and 28, May 5th and 19 \$60