

Area Closure Notice: Section of Red Deer Trail Red Loop

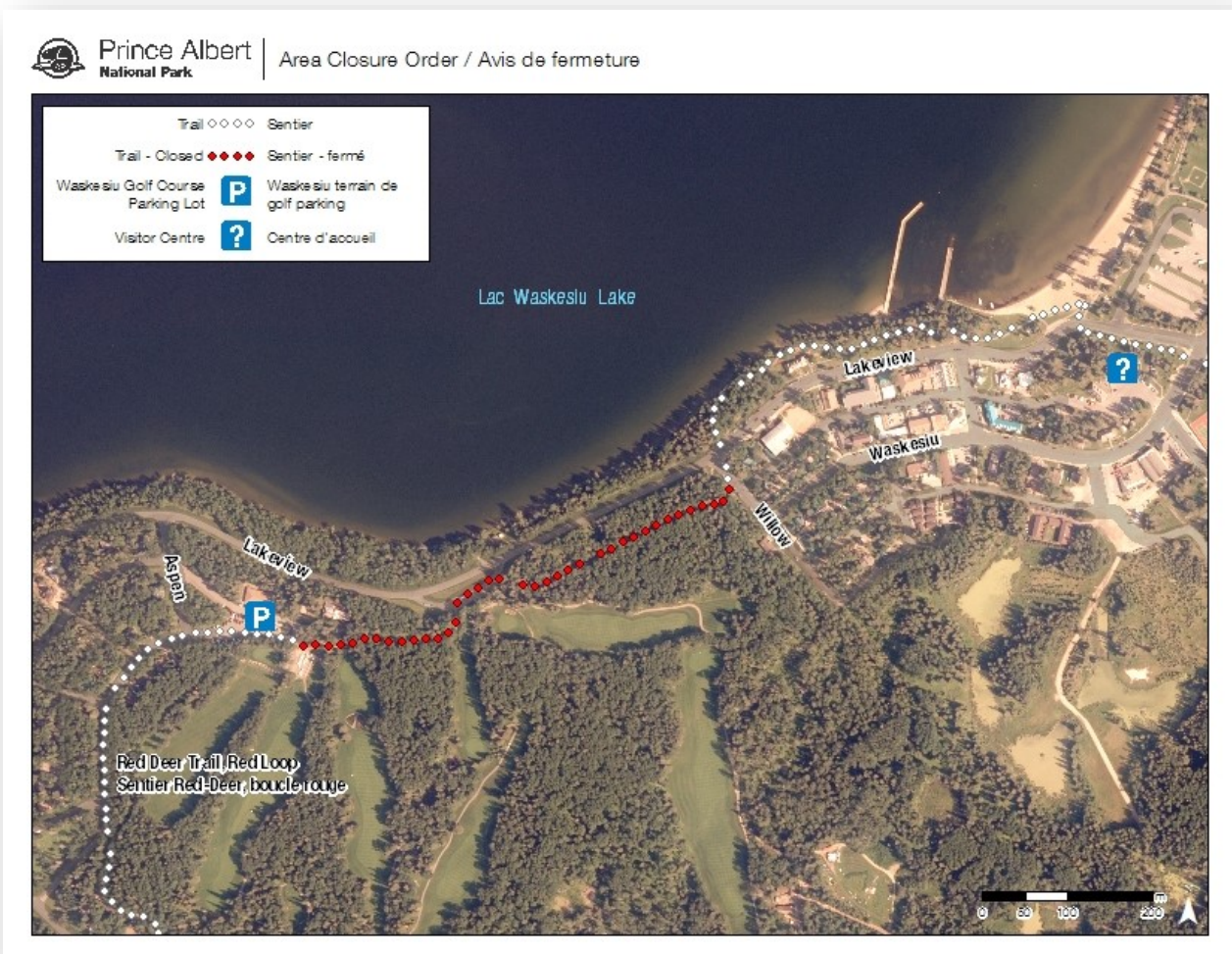
For your information – please see the area closure and map for the Red Deer Trail Red Loop from Willow Street to the Waskesiu Golf Course parking lot below.

The area closure is in effect until March 31 to ensure visitor and staff safety in the FireSmart Demonstration Area, a section of land adjacent to the Waskesiu Golf Course and Highway 263. During this time frame, crews are actively limbing and falling trees, and burning brush piles in the closed area according to the fuel management strategies outlined in the FireSmart program.

To learn more about the FireSmart program, visit www.FireSmartCanada.ca or pick-up a FireSmart homeowners manual at the Visitor Centre.

For more information about the FireSmart Demonstration Area and wildfire risk reduction work in the park, visit: https://www.pc.gc.ca/en/pn-np/sk/princealbert/nature/feux-fire/feux-fire_6

For any questions or concern, please contact :
Bronwyn Craig
Project Coordinator, Prince Albert National Park
Parks Canada - Government of Canada
Box 100 Waskesiu Lake SK S0J2Y0
Cell: 306-914-6289
bronwyn.craig@canada.ca





AREA CLOSURE ORDER AVIS DE FERMETURE

PURSUANT TO SECTION 36(1) OF THE NATIONAL PARKS GENERAL REGULATIONS THE FOLLOWING AREA IS HEREBY CLOSED AND RESTRICTED TO AUTHORIZED PERSONNEL ONLY BY ORDER OF THE SUPERINTENDENT, NORTHERN PRAIRIES FIELD UNIT:

Red Deer Trail Red Loop from Willow Street to Waskesiu Golf Course parking lot


Will be closed:

Friday, February 1, 8:00 a.m. –
Sunday, March 31, 5:00 p.m.

Due to:

**TREE REMOVAL ALONG
POWER LINES AND
FIRESMART OPERATIONS**

For more information please call
306-663-4522.


David Britton
Field Unit Superintendent,
Northern Prairies

EN VERTU DU PARAGRAPHE 36(1) DU RÈGLEMENT SUR LES PARCS NATIONAUX, LE SECTEUR MENTIONNÉ CI-DESSOUS EST FERMÉ ET RÉSERVÉ AU PERSONNEL AUTORISÉ PAR ORDRE DU DIRECTEUR DE L'UNITÉ DE GESTION DU NORD DES PRAIRIES :

Boucle rouge du sentier Red Deer, de la rue Willow au stationnement du terrain de golf de Waskesiu

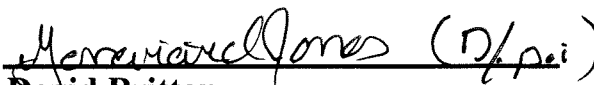
Ce secteur sera fermé :

Du vendredi 1^{er} février à 8 h au
dimanche 31 mars à 17 h

Raison :

**ABATTAGE D'ARBRES LE
LONG DES LIGNES
ÉLECTRIQUES ET TRAVAUX
RELATIFS AU PROGRAMME
INTELLI-FEUS**

Pour en savoir plus, composez le
306-663-4522


David Britton
Directeur, Unité de gestion du Nord
des Prairies

