

ECHO

JAN. 13, 2017

Alamo Rec-Veh Park • 1320 W. Frontage Rd. • Alamo, TX 78516 • webpage: alamorecvehpark.com Vol. 2, Issue 11
Activity Office (956) 783 5440 • General Manager (956) 787-8221 or (956) 703-8025 or (956) 602-9056
Editors: Barb Zanetti (Taetsch) 586-438-5115 and Colleen Benoit 262-914-7100 • Email: echo1320@att.net
(Please place upcoming announcements in the Main Office "ECHO" Box by TUESDAY at 5 p.m. OR use the Echo email.)

DEFIBRILLATORS: The defibrillators are currently located in the East Laundry Room, north section of the Main Hall, and in the Laundry next to the Pool Hall.

FROM THE MAIN OFFICE

Dear Alamo Rec-Veh Residents,

We have several new park residents, along with returning ones. Our hope is that everyone is enjoying the activities we have planned for you. As the month goes on, everyone should have more and more entertainment opportunities.

For those attending the RV Show at the Livestock Grounds in Mercedes, stop by our Alamo Rec-Veh booth and say hello to your neighbors, who are representing us and helping to greet potential park residents.

At two of our January Wednesday morning Activity Meetings, we have sponsored two helicopter drawings. To sign up for these drawings, you must be at the meeting and agree to go to the following Tuesday morning's RC Quad & Copter flight training in the Rec Hall.

Remember that on Monday, Jan. 16, we start our Special Jam & Dance with a Rock 'n Roll theme. Join Jay & Tammy for a fun afternoon.

Our RC Quad/Copter Event runs Tuesdays at 9 a.m. Check out the action. A Fishing Contest begins Thursday, Jan. 19 thru Sat., Jan. 21.

Our RC and Pellet Gun Swap Meet / Craft Show is a can't miss event on Sat., Jan. 21. H.E.B. will be here with Wine Tasting from 11-12:30, plus many other vendor displays, RC demos, minnow racing and so much more!

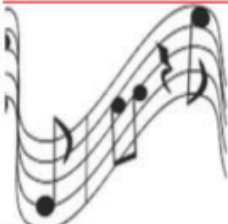
On Jan 28, we will be hosting an Open House for the park. I'm hoping you will all come to help and to enjoy the day. If you have anything from your group that you'd like to display that day, please contact me.

We have a busy January planned! We are so proud to have all of you here enjoying your winter with us.

If we can help you in any way, please let us know.

Respectfully, Barb Hamel, Park Manager

Note: IT IS A VIOLATION TO TAMPER WITH METER BOARDS BY MIXING UP NUMBERS.



JAY & TAMMY are hosting
JAMS & DANCE. This week's theme: **Rock 'N Roll.**
MON., JAN. 16. (Lunch at 11 a.m. \$5,
followed by Jam at 12:30 a.m.)
MENU: Smoked Pork Loin, Sandwiches, Chips, Dessert,
Coffee or Iced Tea. Sponsored by Activity Club.

THE RANGE IS CLOSED
until Wednesday of next week.
(DUE TO ELECTRICAL PROBLEM.)

TUES., JAN. 17 (6:30 p.m.) Cost: \$6

BILLY CHRASTEL

WEDS., JAN. 18 (1:30-3:30 p.m.) \$7

BERNIE & RED

THURS., JAN. 19 (7 p.m.) \$5 (DANCE)

REGAN JAMES

TICKETS AVAILABLE IN ACTIVITY OFFICE

Upcoming Events

- SAT., JAN. 14 – BREAKFAST** (7:30-9 a.m.) in Rec Hall. Serving omelets, pancakes and sausage patties. Sponsored by RC Off-Road Track. Kitchen help is appreciated. Sign-up sheets near kitchen.
- SAT., JAN. 14 – MEMORIAL SERVICE** (1 p.m.) in Rec Hall. (*This memorial service recognizes those Alamo Rec-Veh Park residents who have died during 2016.*)
- MON., JAN. 16 – BIKE GROUP RIDE** (*Gather at 8:45 a.m. in front of Lot A19 -- East Gate, Leave park at 9 a.m.*). Ride from Bentsen State Park thru Butterfly Gardens to Conroy and back.
- MON., JAN. 16 – SPECIAL JAM & DANCE.** (Lunch 11 a.m.; Jam & Dance 12:30 p.m.) in Rec Hall. Theme: Rock 'N Roll.
- TUES., JAN. 17 – SPANISH CLASSES** (1:30 p.m.) in Annex. First class FREE. Sign-up sheets near kitchen.
- TUES., JAN. 17 – BILL CHRASTEL SHOW** (6:30 p.m.) in Rec Hall. Cost: \$6. (*Entertainer*)
- WED., JAN. 18 – TOUR: GREYHOUND RACING.** (Cost: \$15) includes reserved seating and a complete buffet during races. Sign up soon to secure seats. (Leave park at 12 noon.)
- WED., JAN. 18 – BERNIE & RED** (1:30-3:30 p.m.) in Rec Hall. Cost: \$7. Advanced ticketholders receive Reserved Seating.
- THURS., JAN. 19-21 – FISHING CONTEST** (*Ends at 4 p.m. on Sat., Jan. 21*). Lay down your ruler next to fish and take a picture of your measurement with cell phone or camera. Then, show it to Gary Morin.
- THURS., JAN. 19 – REGAN JAMES** (7 p.m.) in Rec Hall. Cost: \$5.
- THURS., JAN. 19 – TOUR: WETLAND & CAMPFIRE COOKING.** (Leave park at 5 p.m.) Cost: \$6.
- SAT., JAN. 21 – RC & PELLET GUN SWAP MEET & CRAFT SHOW** (9 a.m.-3 p.m.) Bring your RC vehicles, pellet guns and fishing poles to swap or sell. (*See ad on pg. 4.*) Vendors include HobbyTown and New Sun Racing with RC demos, Engert Farms with citrus samples, as well as fresh orange juice samples, RV Supply Center with a

Events . . .

drawing for a motion detector RV light (\$100 value online), H.E.B. Wine Tasting from 11-12:30, plus park resident crafts and more!

SAT., JAN. 21 – PATIO SALE (8 a.m.-Noon).

MON., JAN. 23 – SPECIAL JAM & DANCE.

(Lunch 11 a.m.; Jam & Dance 12:30 p.m.)

Theme: Western.

TUES., JAN. 24 – GORDY & AGGIE SPECIAL DINNER (5 p.m.) in Rec Hall. Cost: \$7. Menu: Chicken Cordon Bleu, Baked Potato, Medley Mixture, Dessert, Coffee or Tea. Tickets in Activity Office.

WEDS., JAN. 25 – CRAZY T-SHIRT DAY.

Please decorate them any way you'd like.

Some are choosing to order one with something funny on it. It's up to each of you.

SAT., JAN. 28 – ALAMO REC-VEH PARK

OPEN HOUSE (10 a.m. - 2 p.m.).

SAT., FEB. 4 – OLD-TYME RADIO DINER THEATER w/DANCE. (Seating at 6 p.m.; Sit-Down Dinner 6:30 p.m.) in Rec Hall. Cost: \$12.50. *Tickets available in Tour Office exclusively at Alamo Rec-Veh Park until Tues., Jan. 17.* After Jan. 17, remaining tickets will go on sale to general public.

SUPER BOWL POOL

See Bea at Lot 306. Call (956) 566-1182 to make sure she is home. The pool will be played as it has been in previous years.

Happiness is...

when what you think, what you say, and what you do are in harmony. – MAHATMA GHANDI

PARKING

Please don't park cars and trucks in spots designated for Golf Carts. *There is a limited amount of golf cart parking.*

CARDS (in Annex)

COURT WHIST: Sat., 6:30 p.m.

SPADES: Tues. & Thurs., 6:30 p.m.

SAVVY STITCHERS

Knitting and Crocheting Group – Tues., Jan. 17 at 1 p.m. in North Hall. Bring any project you're working on. For more info, contact Janice Davis at (231) 690-3681.

HELPING HANDS

Quilt & Hobby Show

THURS., FEB. 2

(9 a.m.-1 p.m.) In Rec Hall

HELPING HANDS invites all residents to consider entering the "Quilt & Hobby Show."

Registration will be on Wed., Feb. 1 in the Rec Hall between 4-6 p.m. If you have a hobby such as woodworking, jewelry making, knitting, crochet, quilting, painting, etc., please enter these items in our Park Show.

We always have a great day with refreshments served and many door prizes distributed. A quilt will be given away. *Contact Judi Swanda, Vera Welty or Jan Mathias if you have questions.*



VALENTINE PARTY

COWBOY POET ENTERTAINMENT

WITH

MODIFIED BOX SOCIAL

SAT., FEB. 11, 2017 from 5-9 P.M.

How it works:

- LADY (or Partner 1) brings BOXED MEAL** (Cold -- not hot – food) **FOR TWO**
(MINIMUM VALUE \$10)
- MAN (or Partner 2) brings Mega Cash** (at least \$10) **To Bid on a Box** (to share with Partner 1)
- BOXES to arrive by 4:30 p.m.**
(Boxes should be concealed in cloth or garbage bag.)
- EVERYONE is WELCOME** (Couples & singles)
Coffee, Iced Tea and Water will be provided or BYOB.

Please write ticket number on your box inside your bag.

TICKETS: \$2.50 per person

GET YOUR TICKETS EARLY at the Activity Office. (ONLY 150 AVAILABLE!)



RESIDENT INFO FORMS DUE

Please turn these forms in **AS SOON AS POSSIBLE.** This important information helps us to update our office records. *If you've already completed them, thank you!*

MAIL FORWARDING LABELS

Please check with the office to see if you have correct mail forwarding labels. These labels will help us forward your mail back home when it's time for you to leave Alamo Rec-Veh Park.

PACKAGE DELIVERY INFO

When ordering anything to be delivered to your lot here, be sure to use the correct lot number. If you're on the blacktop use an A before your lot number. Use an F for F section, and B for B section.

REMEMBER: Speed limit in the park is 10 mph. Keep our residents safe!

2016-17 CALENDAR CHANGES

• **SAT., JAN. 21 – RC, PELLET GUN, AND FISHING SWAP MEET** replaces Mystery Dinner, which is postponed until March. (Date TBA)

13-MONTH (Dec. to Dec.) CALENDAR

\$5 Donation

featuring even more
coupons than last year!

AVAILABLE IN MAIN OFFICE

MORE ALAMO REC-VEH PARK SPECIAL EVENTS
listed in this calendar. Check out fun photos of your
friends and neighbors. *Plus, money-saving coupons!*

Old-Tyme Radio Dinner Theater

FOLLOWED BY DANCE



SAT., FEB. 4

Seating at 6 P.M.
Dinner at 6:30 P.M.

**TICKETS LIMITED TO 125
BY RESERVATION ONLY**

**(Tickets MUST be
purchased in advance
at Tour Office.)**

Only **\$1250**
per person

MENU: SALAD, HAM, CHEESY POTATOES, GREEN BEANS, ROLL, BUTTER,
DESSERT and RASPBERRY ICED TEA, COFFEE or WATER.

LOCATION: ALAMO REC-VEH PARK
1320 W. Frontage Road • Alamo, TX

Tickets will be available exclusively at Alamo Rec-Veh Park until Tues., Jan. 17
ON JAN. 17, ANY REMAINING TICKETS WILL GO ON SALE TO GENERAL PUBLIC. NO TICKETS WILL BE SOLD AFTER FEB. 1.

RED HATTERS

MON., JAN. 16 – STYLE SHOW at Trophy Gardens Park. Correction: Entertainment by Randy Parks from Oxford, Kansas. Tickets sales are over.

CREATIVE EXPRESSIONS

- **MON., JAN. 16 – ID HOLDER** – Linda Albin. Bring 1 fat quarter, 1- 5" x 3 3/4" clear 8 or 10 gauge plastic, 1- 7" zipper matching the fat quarter. I have some clear plastic I will bring and share.
- **MON., JAN. 23 – SHORT-SLEEVE SWEATSHIRT** – Candy Schuster. Bring one sweatshirt in your own size, 4 large buttons (at least 1" in diameter), 4 smaller buttons (1/2" to 3/4" size) 3 small pieces of coordinating fabric (at least 8"x8" size), small piece of double-sided fusible interfacing such as Heat and Bond.

The Church Corner



Pastor Cathy Graham

*Salt and Light Community
of Alamo Rec-Veh Park*

Tele: (956) 524-4913

Email: 2dlbug@msn.com

"You are the salt of the earth ...
You are the light of the world, a city
that is set on a hill cannot be hidden ...
Let your light so shine before man, that
they may see your good works and glorify
your Father in heaven."

Mark 5: 13-15

- Church services on Sundays at 9 a.m.
- **CHOIR PRACTICE** resumes Friday, Jan. 13 at 1 p.m..
- **BIBLE STUDIES** on Wednesdays at 10 a.m. (after Park Meeting).
- **MINDFUL COLORING** follows Wednesday Bible Studies.
- Please check Church Bulletin Board for info about future events.
- Special services will be held on Ash Wednesday, Good Friday and Easter Sunday.
- Go to Schwans-Cares.com enter #30812 to order food online, which helps church expenses and charities. Will continue through Jan. 28, 2017.
- Sun., Jan. 15 after Service – 1st annual Congregational Meeting. Everyone welcome.

SALT & LIGHT COMMUNITY PATIO SALE

Looking for donations for the Sat., Jan. 21 patio sale. This is a fundraising event to defray printing costs, etc. We will set up on Friday, Jan. 20. Everyone is welcome to bring their items at that time. **Location: On patio near exercise room (across from main office.)**

LIBRARY NEWS

Come in and check out our new book additions in the library. We recently received more than three large bags of books. Note that shelves had to be rearranged. Please place incoming books into baskets, and we will shelve them. Thank you for your cooperation. *Dean and Karen Starks*

BUSY BEE QUILTERS

Busy Bee Quilters meet on Friday from 1:30-3:30 p.m. in Annex. **Thurs., Jan. 19 all-day sewing project: Sweatshirt jacket.** SEE US ON FRIDAYS FOR MORE INFORMATION OR TO JOIN US IN QUILTING AND FRIENDSHIP.

POP TABS • CAMPBELL SOUP LABELS • EDUCATION COUPONS

We're saving POP TABS for Ronald McDonald House. In addition, we're saving Campbell Soup labels, along with Education coupons from Campbell products. Collection containers for both items are in Card Room.

HELPING HANDS

From 8-11:30 a.m. on Tuesdays in Annex, Helping Hands invites everyone to make quilts for the needy here in the Valley. You do not have to sew. Lots of quilts need tying, etc. *Both guys & gals needed!*

POOL NEWS

Fun Night every Wed. night at 6:30 p.m. sharp. Friday is League. Everyone is welcome. We need players and scorekeepers. See you in the pool hall!

**COMBINATION ON FLEA MARKET
GATE HAS BEEN CHANGED.**

Please stop at office to get new code.

The following groups NEED participants, players, spectators, etc. *Go to a meeting, game, or activity just to see if it's a good fit for you.*

Group Leaders: You will need to submit info for this column by Tuesday at 5 p.m. every week. Please be brief. Copy will be edited.

RC Racing and Range Activities Started!

- Fri., Jan. 13 -- 1 p.m., Oval Track Racing in front of Main Office (11 a.m. - Practice, Noon - Lunch) Bring your RC cars or just come down to watch.
- Sat., Jan. 14 -- Off-Road Track: (1 p.m.)
- Sun., Jan. 15 -- Sailboat Racing (1 p.m.); Lunch at 12 noon: Hot dogs, chips, brownies, and soda.
- Tues., Jan. 17 -- Quadcopter Racing in Rec Hall. (9 a.m.) Bring your 'copters and drones. *Bakery fare and coffee on sale during Tuesday morning races.*
- Thurs., Jan. 19 -- Fun Shoot at The Range.

2016-17 REMOTE CONTROL RACING AND RIFLE RANGE DONATIONS:

(The following donations give you access to ALL RC and Gun Range competitions and activities for the 2016-17 season.

There's NO separation for individual activities.) Please get your donations in soon. Donations help to fund RC, Gun Range and Fishing events.

Annual Couple:
\$50 donation

OR ...

Annual Single:
\$35 donation

Monthly Couple:
\$20 donation

OR ...

Monthly Single:
\$15 donation

Donations and paperwork for RC&R name cards are handled in Main Office. See Dave Langseth for info.

UPCOMING TOURS

Sign-up for all tours in Tour Office or in Main Hall on Bulletin Board so you don't miss out on opportunities. *(Once a tour is filled, you LOSE your chance to go.)* Meet in the Rec Hall before the tour unless otherwise indicated. Watch for new tours (posted) because last-minute opportunities often open for park residents. *For info, call Tour Directors Marion Peterson at (651) 307-3104 or JoAnn Langseth at (612) 719-0350.*

- WED., JAN. 18 – GREYHOUND RACING. (Cost: \$15) includes reserved seating and a complete buffet during races. Sign up as soon as possible to secure seats. (Leave park at 12 noon.)
- THURS., JAN. 19 – WETLAND & CAMPFIRE COOKING. (Cost: \$6) Leave park at 5 p.m.
- FRI., JAN. 20 – ADOBE HOUSE in McAllen. (Cost: \$3) Leave park at 9:15 a.m.
- SUN., JAN. 22 – BLOODLESS BULLFIGHTING. (Cost: \$31) Leave park at 12:30 p.m. Sign up in Tour Office.
- THURS., JAN. 26 – COSMETOLOGY SCHOOL in McAllen. Spa day to get haircuts, manicures, facials, etc. See flyer in Tour Office for prices.



RC & PELLET GUN Swap Meet & Craft Show

ALAMO REC-VEH PARK in REC HALL
1320 W. Frontage Road • Alamo, TX 78516

SAT., JAN. 21 from 9 a.m. to 3 p.m.

Featuring ...

- RAFFLES: RC Car, RC Quadcopter, and Fishing Pole
 - RC Copter and Car & Truck Demos
 - Minnow Racing
 - RC Car, Trucks, Boats and Copters for sale (BOTH NEW & USED)
 - Pellet Gun and Fishing Equipment for sale
- Bring your RC Trucks, Cars, Boats, Copters, Accessories and Equipment, as well as Pellet Guns and Fishing Equipment. . . TO SELL OR TRADE.*

\$5 a table • For more info, call (262) 914-7100.

CRAFT SALE

with park resident crafts and outside vendors

such as ...
H.E.B. Wine-tasting
and Engort Farms' fruit and juice samples,
... PLUS MORE.

FOR SALE
LUNCH and BAKERY TREATS

• PUBLIC INVITED! •

