

# FOR LEASE

## OFFICE SPACE AVAILABLE

712 & 714 S. Barstow, Eau Claire, WI

Approximately  
880 SF

Approximately  
1,200 SF



- Approximately 1,200 & 880 SF For Lease on Main Level
- Lower Level Available For Storage/Additional Offices
- Highly Visible with Street Signage
- Off Street Parking
- Competitive Rates/Build To Suit

[www.midstatesdevelopment.com](http://www.midstatesdevelopment.com)

### **Mid States Development, Inc.**

475 Chippewa Mall Dr., Ste. 335  
Chippewa Falls, WI 54729



### **Contact::**

**DAVID SANDERS**

**715-723-2223 ext 12**

[dsanders@midstatesdevelopment.com](mailto:dsanders@midstatesdevelopment.com)

*"Your Commercial Real Estate*

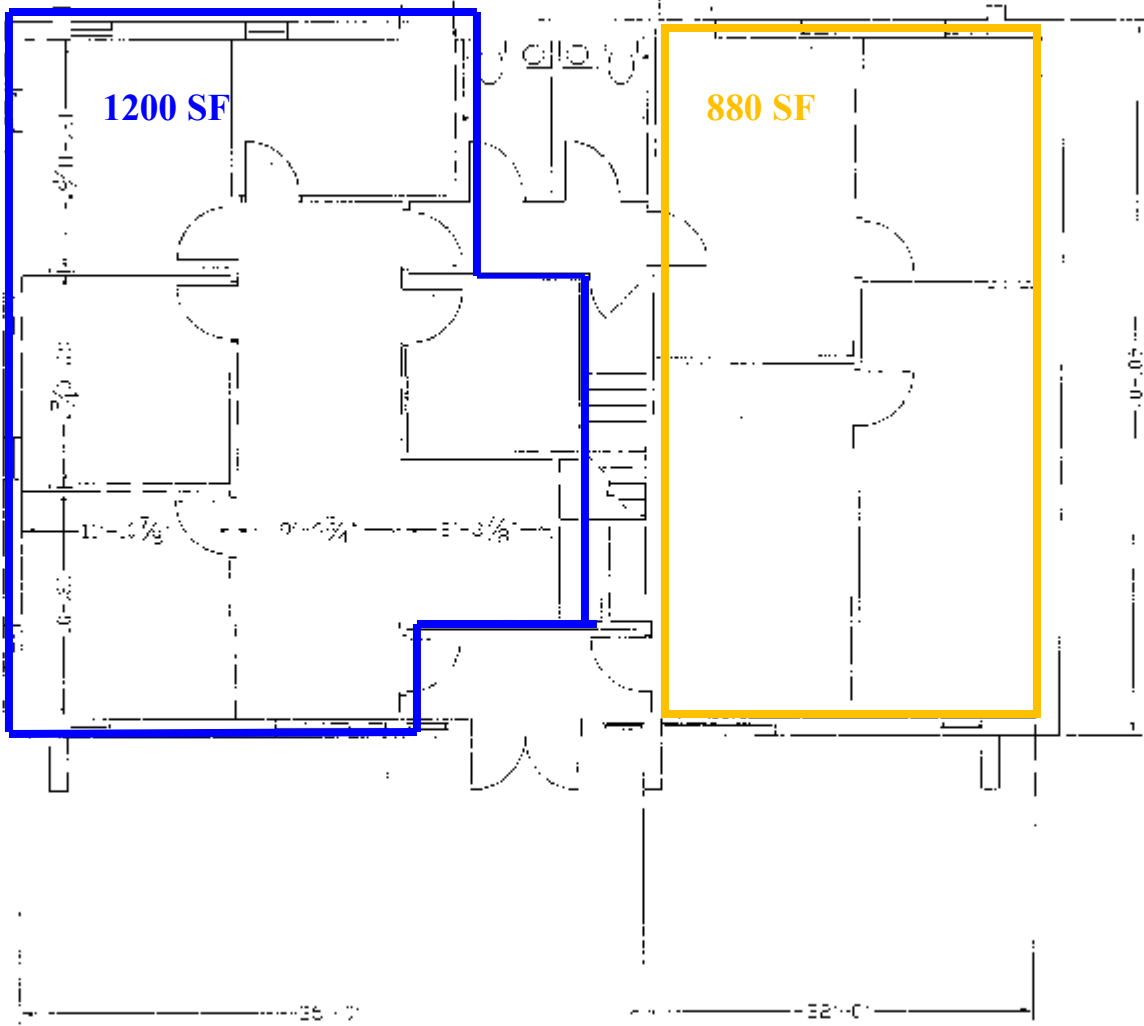
# Building Floor Plan

## OFF-STREET PARKING -BACK OF BUILDING

712 S. Barstow Street

714 S. Barstow Street

DRIVEWAY →



← South Barstow →



[dsanders@midstatesdevelopment.com](mailto:dsanders@midstatesdevelopment.com)