

MILFORD HIGH SCHOOL THEATRE COMPANY 2021


THE MILFORD HIGH SCHOOL THEATRE COMPANY PROUDLY PRESENTS . . .




Once Upon a
MATTRESS



Music By: Mary Rodgers
Lyrics By: Marshall Barer



Book by: Jay Thompson,
Dean Fuller & Marshall Barer



November 19, 2021 – 7:00pm
November 20, 2021 – 1:00pm & 7:00pm

MHS Center for the Performing Arts

TICKETS & INFORMATION:

www.MHSPERFORMINGARTS.com

Presented by arrangement with Concord Theatricals

www.ConcordTheatricals.com

WHY DO THE MUSICAL AT MHS?

1. Oral Communication Skills
2. Creative Problem-Solving Abilities
3. Motivation
4. A Willingness to Work Cooperatively
5. The Ability to Work Independently
6. Time Management Skills
7. Initiative
8. Promptness & Respect for Deadlines
9. Acceptance of Rules
10. The Ability to Learn Quickly
11. Respect for Colleagues
12. Respect for Authority
13. Adaptability
14. The Ability to Work Under Pressure
15. A Healthy Self-Image
16. Acceptance of Disappointment
17. Perseverance
18. Self-Discipline
19. A Goal-Oriented Approach to Work
20. Concentration
21. Dedication
22. Patience
23. A Willingness to Accept Responsibility
24. Leadership Skills
25. Self-Confidence

EXPECTATIONS & RULES

1. Be EARLY for every rehearsal!!!
2. Excused Absences (as few as possible)
3. Dress Appropriately (mask)
4. Bring Script/Music & Pencil
5. No Food, Gum or Drink in CPA
6. Hair out of face
7. No Visitors (Closed Rehearsals)
8. No excessive talking
9. Use time productively (HOMEWORK!)
10. RESPECT – of space & each other
11. NO Cell Phones - Rehearsal or Performance



The Who and What

Director: **Megan Weeks**

Staging, Schedule, Props, Set

Music Director: **Brittany Miller**

Music & Orchestra Conductor

Technical Director: **Sarah Martin**

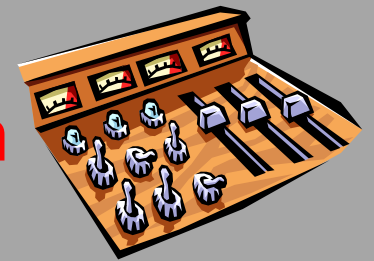
Lighting & Sound

Asst. Music Director: **Brenda Granroth**

Accompanist, Music & Orchestra

Choreographer: **Suzanne Jonna**

Dance & Staging



The Who and What

Costume Director:
(Including Hair & Make-Up)

Melinda Mihail

Acting Consultant:

Michelle White

Photographer:

Tara Johnson

Business Manager:

Dawn Herman

Stage Manager:

Mia Rice & Lachlan Beesley

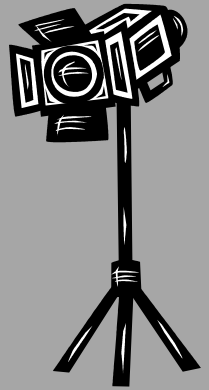
Student Tech Dir:

Rachel Martin



THE SCHEDULE

1. 99% Mandatory Sept/Oct
2. 100% Mandatory November
3. Communication is KEY
4. Make up missed information
5. 3+ Unexcused = Removal

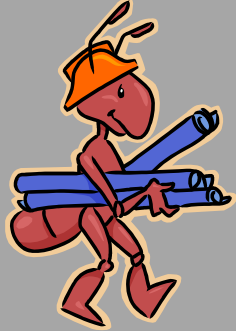


Missing a rehearsal may mean you



will NOT be in that number!!

VOLUNTEERS!!



SET BUILDING & PAINTING

Evenings/Weekends from now until November

Come when you can

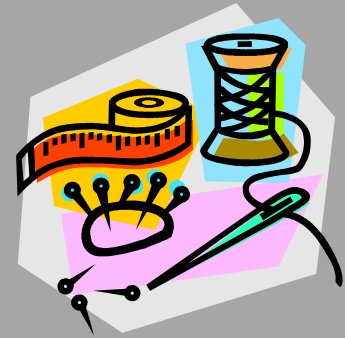
Builders, Engineers, Destroyers & Painters (any skill)

COSTUMING/SEWING

Alterations & Sizing

Creating: skirts, dresses, etc

Organizing, Cleaning & Repairing



HAIR/MAKE-UP

Must be able to commit to several trainings and ALL of Show Week
No part-time volunteering in this area.

Parents will fill in IF we have gaps. Student crew will fill it first.
Cannot style your own child.

VOLUNTEERS!!

FOOD



Coordinators and Workers for:
Show Week Potlucks
Friday - Cast Luncheon
Saturday - Between Shows



PUBLICITY

Coordinators: **Dawn Herman & Jill Mondrush**
Getting the Word Out - Newspapers, Bulletins, Posters
Yard Signs, Banners, etc.
EVERYONE: Emails to Friends & Family



VOLUNTEERS!!

PARENT VOLUNTEER COORDINATOR

Becky Kanak (looking for an asst. to train)

Organizes and oversees all parent volunteers areas.

HOUSE MANAGER

Oversees Lobby/House for a Show

Ensures each area has what they need (supplies, money, etc)

Helps with set-up & take down of areas & getting audience into seating at start & after intermission



PROGRAM ADS

Forms Available - Start Now

Need to raise \$2000 to cover cost of program

Dawn Herman



VOLUNTEERS!!

WEEKEND HELP

Ticket Sales
Ushering!!!!
Water Sales
Cookie Table



(all participants will need to bring in 2 dozen cookies)

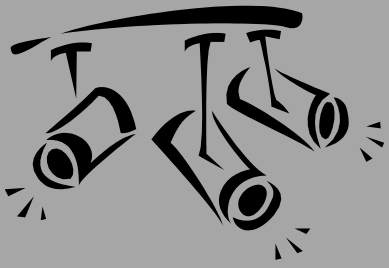
Children's Room Coordinator/Helper
Middle School Room Coordinator/Helper
Flower Sales (& Set-Up)



CPA CLEAN-UP

Sunday, Nov. 21st - 1-4 pm

The more hands on deck, the less time it will take!!
HIGHLY ENCOURAGED but not mandatory



COSTS



MANDATORY

Production Fee: \$110 per participant

**Covers costuming, cast party, some food, photo access,
& other staging needs**

Includes ONE show t-shirt

Script Deposit: \$40 (will not be cashed/spent)

ONLY needed from those who are issued personal scripts.

Money used ONLY if scripts are lost or damaged

OPTIONAL

Additional Show T-Shirt: \$13

Sweatshirt: \$25

High Quality Print Photos: Varies





COSTS



Make-Up

We will supply most of it but ALL students need their own eyeliner & mascara

MAYBE BUT CHEAP

Home, Family & Friends

Personal Costuming Items:

Undergarments, socks/tights, character shoes or dress shoes

Personal Hair Items:

Combs/Brushes, Hairspray/Gel, Bobby pins, curling irons, etc.



COSTS



TICKETS

Online Oct. 4th at 8am
to Nov. 19th at 4pm

\$12 ALL

(Ticket/Credit Card processing fees)



AT-THE-DOOR:

\$15 Adults

\$12 Students/Seniors/Children



PHOTOGRAPHY

TARA JOHNSON

Photo Release is Opt Out

If you do NOT want your child
photographed, you need to see us
tonight!!

Otherwise, it is assumed consent.





VM INFO...



SHOES & TIGHTS

Thursday, Sept. 30

After school/during Reh – Miller

**Miss Melinda will also have ordering
for tights/spanks/body suits soon.**

NEXT UP...

VOLUNTEER SIGN UPS

PAYING FEES

QUESTIONS ANSWERED