

FALCON SERIES



FALCON 2-70



- Capacity pump 100 m³/h
- Machine cycle 15-40 sec.
- Dimensions 1260 x 1010 x 1070 mm
- Weight 319 kg
- Voltage 400V-3-50Hz (other voltages available)
- Power 3,0 - 5,0 KW

FALCON SERIES

FAST AND ROBUST VACUUM PACKAGING MACHINES WITH WORLD WIDE REPUTATION

- Robust single and double chamber vacuum packaging machines
- Full range for vacuum and MAP packaging options
- Extensive program choices for specific packaging requirements
- Industrial machines for an attractive price
- User friendly and low maintenance supplied with complete service program
- Long term advantages: efficiency and optimal operational profit due to professional packaging

NON-FOOD PRODUCTS

*Electronics - Semi-conductors - Metal - Textiles
- Pharmaceutical Products - Laboratories etc.*

- Moisture free packaging
- Air and dust-free packaging
- Volume reducing packaging
- Scrapes and scratches free solution
- Fraud resistant packaging
- Sterile and contamination free packaging
- Antistatic packaging (ESD)

FOOD PRODUCTS

*Industrial Production - Wholesale - Export Packaging
(meat, poultry, fish, cheese, vegetables etc.)*

- Longer shelf life / Optimal product and storage hygiene
- No contamination, hermetically sealed
- No loss of product (prevents drying out, moulds and freeze burn)
- Improved product quality (product maturing in packaging, no loss of aroma)
- Cost savings due to longer shelf life (larger purchasing amounts, re-packaging)
- Increased turnover due to longer shelf life (broader market, more variation in product range)
- Optimal packaging contributes to food safety and HACCP standards

SPECIFICATIONS

GENERAL

- Single and double chamber floor models
- Stainless steel housing
- Aluminium vacuum chamber
- Aluminium lid with sightglass
- Easily removable silicon holders
- Sealing mechanism mounted in lid
- Insert plates for adjusting vacuum chamber height

PACKAGING FUNCTIONS

- **Vacuum Optimal**
Final vacuum 99,98% (0,2 Mbar)
- **Gas-flush**
Injecting neutral gas for product protection and longer shelf life
- **Soft-air**
Controlled ventilation for protection of product and packaging

SEALING SYSTEMS

- **Double Seal**
2 x 3,5 mm convex sealing wires for product remains elimination and strong hermetic seals (double protection)
- **Cut-off seal**
1 x 3,5 mm convex sealing wire + 1 x 1.1 mm round cutting wire / One time setting (cut off remaining flap)
- **1-2 Cut-off seal**
1 x 3,5 mm convex sealing wire + 1 x 1.1 mm round cutting wire / Independent time setting (shrink bags)
- **Wide Seal**
1 x 8.0 mm flat sealing wire
- **Bi-Active Seal**
Upper and lower sealing bars with 1 x 5.0 mm flat sealing wire (thick and aluminium vacuum bags)

OPERATIONAL CONTROL FUNCTIONS

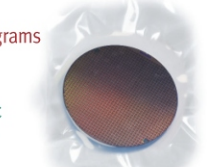
- **Digital Control**
Time control / Automatic programming / 10 default programs
- **Sensor Control**
Set percentage pressure for vacuum and gas functions for accurate and constant packaging results / Automatic programming / 10 default programs / Vacuum plus time
- **Quick stop H₂O Sensor**
Set percentage pressure for vacuum and detect boiling point of the product. For fast cycle and better food protection

SUPPORT CONTROL FUNCTIONS

- STOP button for partial/full cycle interruption
- Digital maintenance program for pump / Operating hours counter / Service indicator programs / Sleeper function etc.

OPTIONAL FUNCTIONS / ACCESSORIES

- Inclined insert plate for packaging liquid products
- Service kit for standard maintenance
- Special machine adaptations for specific products and/or production environments
- ESD configuration



For Sales and
Service Contact

Dussen Pty Ltd
3/70 Andrew St Wynnum.
Brisbane, QLD 4178

PH: 07 3393 6552
FAX: 07 3393 6352
sales@dussen.com.au
www.dussen.com.au

Dussen
Pty Ltd

Delivering Quality at the Right Price



■ *Optional*
■ *Standard*