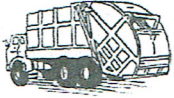


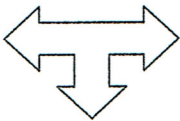
LAKE PERRY TRASH AND RECYCLING

--WHAT YOU NEED TO KNOW--



Trash

1. Only about 20% of household refuse is "trash;" the rest is recyclable.
2. Prohibited in our dumpsters are the following: electronics, tires, batteries, hazardous chemicals, construction waste, yard waste, furniture, appliances and other large metal objects.
3. The more we recycle, the lower our cost for trash collection.



Multi-Stream Recycling

Perry County does "multi-stream recycling" because it has a better profit margin. This requires us to separate recyclable items by kind. Please empty your own collection bags.



What You Can Recycle at Lake Perry

1. Aluminum and glass: deposit in specified containers at the gates.
2. Cardboard and pasteboard: deposit in the white cardboard trailer at the main gate.
3. Plastics (#1 & 2 only), tin cans, newspaper, phone books, magazines and junk mail: separate into appropriate bins in the **green recycling trailer** at the main gate.
4. Oil (cooking oil, motor oil, antifreeze): leave outside of green trailer in sealed containers.
5. Large metal items (not appliances): call Maintenance Supervisor Bob Welden (573-513-9271) during work hours.
6. Shredded office paper: Bag it and set it inside the green trailer.



What You Can Recycle in Perryville

1. Plastics #3 through #7: bring to the collection bins at the Knights of Columbus Hall in Perryville on the second Saturdays of January, April, July and October.
2. Plastic grocery bags: put in collection box at Walmart.
3. Appliances and electronics: take to Perry County Recycling Center. See www.perrycountymo.org for details.
4. Hazardous chemicals: bring to a Perry County Household Hazardous Waste Collection. See www.perrycountymo.org for details.
5. Usable household items and clothing: take to your favorite charity. There is a St. Vincent DePaul Thrift Store in Perryville as well as a shop called Treasures, whose proceeds go to cancer research.