



**ATTENTION:
Annual Membership Meeting Rescheduled
Tentatively for July 8, 2020**

8.a.m-11:30 a.m.

Tehama County Farm Bureau
275 Sale Lane Red Bluff, CA 96080

Coffee and Continental Breakfast will be provided

STWEC members are encouraged to attend the Annual Board of Directors Meeting:

- Election of the Board of Directors - Two (2) Directors will be elected. There are two nominee for re-election. If you are interested in becoming a board member please be prepared to introduce yourself with a brief description. If you are interested in more information please contact Emmy at (530) 527-4208 or info@stwec.org.
- Attending this meeting satisfies your 2020 educational requirement. This requirement can be met by attending the annual meeting, workshops, reading the newsletters or reviewing the website.
The full agenda will be posted the week of the meeting at www.stwec.org

STWECIDMT



Shasta-Tehama Watershed Education Coalition - Data Management Tool

**Have You Completed Your Annual Reporting?
Log in and Report NOW!!
www.stwec.org**

Shasta-Tehama
Watershed Education
Coalition

Sign in to use the Data Management Tool

Enter Username



Enter Password



Sign In

[I forgot my username or password](#)

**Thank you to all those
members who have
reported!!**

*** 87% have completed
their Farm
Evaluation**
*** 95% have completed
their Nitrogen
Management Plan
Summary Report. Thank You!!**

87% 

Farm Evaluation

95% 

NMP Management

Permethrin found in surface water testing at Anderson Creek!!
Read and follow label instructions and be cautious during application to avoid a mandated Water Quality Management

Surface water quality monitoring in Shasta and Tehama counties is currently being performed at Anderson Creek in Anderson, CA for the Shasta Tehama Watershed Education Coalition, to meet requirements of the **Irrigated Lands Regulatory Program (ILRP)**. Surface water quality monitoring began in 2005 and in January of 2018 the Regional Water Quality Control Board mandated monitoring for Pyrethroids. Pyrethroids were detected at Anderson Creek at Ash Creek Road within the 9/26/2019 monitoring event (Review this information at the ILRP tab at www.stwec.org).

What is Permethrin? A manufactured insecticide in the pyrethroid family. Pyrethroids are synthetic chemicals very similar in structure and act like pyrethrin an organic compound found in chrysanthemum flowers that naturally provide insecticidal activity. Pyrethroids are generally more toxic to insects, fish and mammals, and last longer in the environment than pyrethrin. Pyrethroids insecticides are a chemical class of active ingredients found in many insecticides including the majority of household insecticides.
 => Permethrin usage in agriculture include food and feed crops, walnuts, alfalfa, corn and others.
 => Shasta County’s “Pesticide Use Reports” indicate Permethrin usage reported in the Anderson Area.

How can this cost the STWEC membership? When a water quality trigger limit is exceeded twice in a three year period for the same constituent at a monitoring location where irrigated agriculture may have caused or contributed to the exceedances, a **Water Quality Management Plan** will be mandated. Mandated Management Plans require additional water monitoring, mandatory outreach, continuing education, mandatory workshops, response to all special surveys, and potential to implement additional best management practices (BMP’s) protective of water quality **resulting in additional cost to membership.**



The Advantages



- Only apply the herbicide that is required to do the job.
- Use less chemicals than other alternative applicators.
- Apply herbicide to the most effective part of the plant.
- Apply herbicide specifically to the targeted weeds.
- No drift or spray!
- Water Quality Friendly

The Rotowiper uses a unique carpeted drum which rotates in the opposite direction of travel. You select the height to target a select weed group.



California Farm Bureau Compliance Chart -Surface Water Measuring

COMPLIANCE GUIDE

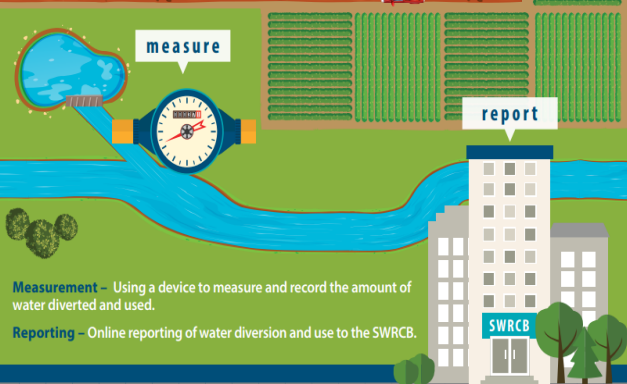
surface water measurement & reporting



Senate Bill 88 (2015) required the State Water Resources Control Board to adopt new **Water Diversion Measurement and Reporting** regulations for surface water diversions.

Water users have been required to report diversions since 1966, but these regulatory changes added requirements and increased penalties.

For information on consultants and devices, see the sponsors on the back.



Measurement – Using a device to measure and record the amount of water diverted and used.

Reporting – Online reporting of water diversion and use to the SWRCB.

COMPLIANCE CHART

surface water measurement & reporting



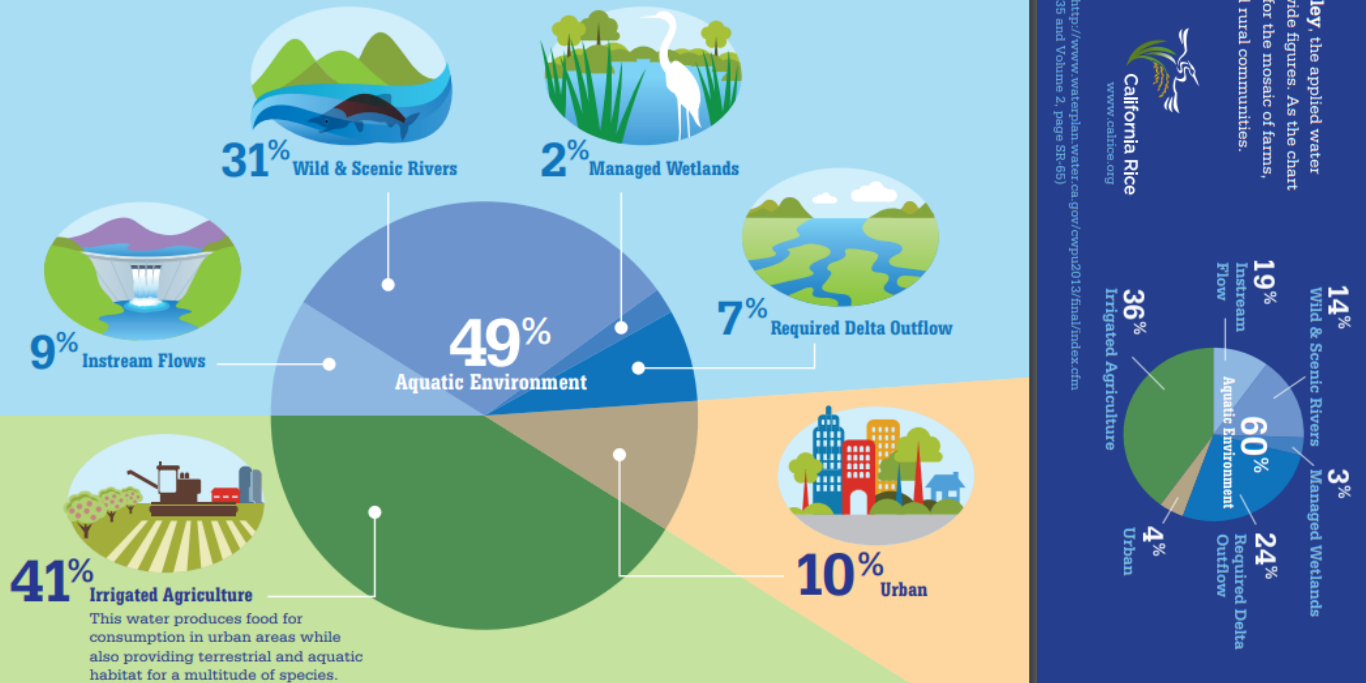
Diversion Type		Deadlines			Requirements		
Failing to file can result in a \$1,000 fine plus \$500 for each day of violation.							
Direct Diversion	Storage	Device Installation	Annual Water Use Reporting (of prior year's use)	File for One of the Special Provisions (see below)	Accuracy (must recertify every 5 years)	Measurement Frequency	Qualifications of Installer & Certifier
≥1,000 af/year	≥1,000 af/year	1/1/17	April 1 for: - Permits - Licenses - Registrations - Certificates	4/1/17 (Permits and Licenses) 7/1/17 (Statements)	10%*	Hourly	Engineer/ Contractor/ Professional/ UCCE Course* **A diverter can become qualified by completing a UC Cooperative Extension water measurement training class, available in 2018. http://bit.ly/2NlCnQq
≥100 af/year	≥200 af/year	7/1/17		7/1/17		Daily	
≥10 af/year	≥100 af/year	1/1/18	July 1 for: - Statements	1/1/18	15%	Weekly	Individual experienced with measurement & monitoring
	>10 af/year					Monthly	
≤10 af/year		Not required		-	-	Monthly (estimated)	None

*Devices installed prior to January 1, 2016 may have 15% accuracy. More information from SWRCB at: <http://bit.ly/2ly124W>

More Information and Tips for Reporting found at: www.cfbf.com/top-issues/?tab=Water

Water Use in California

The new edition of the California Water Plan (Bulletin 160-13) was recently finalized by the California Department of Water Resources, including information on statewide water use in an average water year. The chart below shows how applied water is used in California. Water is managed in California for each of these important beneficial uses, which provides the quality of life we expect.



In the Sacramento Valley, the applied water uses differ from the statewide figures. As the chart shows, water is managed for the mosaic of farms, refuges, fish and tiles and rural communities.

Source: California Water Plan at: <http://www.waterplan.water.ca.gov/cwpu2013/final/index.cfm> (Volume 1, pages 3-31 through 3-35 and Volume 2, page SR-65)

NCWA
Northern California Water Association
www.ncwawater.org

California Rice
www.calrice.org

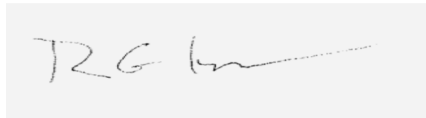
Message from the President

With the recent turn of events, our counties, as well as the rest of the world have been reeling from the changes to our communities. Due to the COVID –19 guidelines our staff is working remotely from home and we have tentatively moved the Annual STWEC Meeting to July 2020 to comply with state distancing guidelines. We are doing our best to continue to support your reporting and invoicing needs. You can continue to reach STWEC staff at 530-527-4208 by leaving a message or by email at: info@stwec.org.

Times like these emphasize the support and highlight the strength and resilience of ranchers and farmers across the country. Agriculture and those that support it continue to be on call 24/7. We are grateful and appreciative for all that agriculture does for our communities. Without you, your families, and employees our great county, state and communities would not be able to produce the wide variety of crops found right here in Shasta and Tehama counties.

I truly wish you and your family good health and continued safety.

Ron Keown,
President STWEC Board of Directors



Shasta Tehama Watershed Education Coalition

PO Box 933
Red Bluff CA 96080

Phone: 530-527-4208

«IDNo»
«Fname» «Lname»
«ADDR1»
«CITY», «ST» «ZIP10»

Up Coming Board Meeting:

Bi-Monthly Meeting –Held by teleconference (call in# 339-209-4637)

Wednesday, May 13, 2020 at 8 am | Conference Call Only –in person meeting cancelled due to Covid-19 Guidelines