

Green Apple
LIGHTING USA

Product Catalog



Efficiency Lighting Solutions



Green Apple Lighting USA's mission is to provide LED lighting and sustainability product solutions that can replace and outperform their existing general lighting needs in energy savings, durability, life and practicality.

Green Apple Lighting USA (GALUSA) is an energy consulting and lighting distributor located in Manhattan, where we have a team of experts in the energy services industry.

GALUSA pioneered the LED lighting industry in New York City when its founder discovered that the LED industry in the Big Apple was in its infantile stages. In 2009, GALUSA's founder embarked on a mission to bring LED lighting technology to New Yorkers which has resulted in energy efficiency, cost reduction and the creation of green jobs.

Through our Partner Firm, GALUSA specializes in Energy Procurement, Demand Response and obtaining NYSERDA grants for numerous commercial energy efficiency projects. Our affiliate company, has generated over \$60M in NYSERDA cash incentives to our clients and \$90M year-over-year in energy savings!



TABLE OF CONTENTS

LED TUBES

LED T8 4FT TUBE BALLAST COMPATIBLE.....	4
LED T8 4FT TUBE DIRECT REPLACEMENT.....	5
LED T8 2FT TUBE BALLAST COMPATIBLE.....	6
LED T5 4FT SINGLE INTEGRATED TUBE.....	7
LED T5 5FT SINGLE INTEGRATED TUBE.....	8
LED T5 4FT TUBE.....	9
LED T5 3FT TUBE.....	10
LED T5 2FT TUBE.....	11

LED PANELS

LED ULTRA SLIM ROUND PANEL.....	12
LED 5" WIDE FLAT LINEAR PANEL (4FT).....	13
LED 5" WIDE FLAT LINEAR PANEL (6FT).....	14
LED LINEAR FIXTURE.....	15
LED LINEAR BOX.....	16
LED 2x2 PANEL.....	17
LED 2x4 PANEL.....	18
LED 1x4 PANEL.....	19
LED 1x4 LINEAR DIRECT/INDIRECT PANEL.....	20
LED 1x4 RECESSED TROFFER PANEL.....	21
LED 1x4 TROFFER PANEL.....	22
LED 2x2 LINEAR DIRECT/INDIRECT PANEL single basket.....	23
LED 2X2 LINEAR DIRECT/INDIRECT PANEL dual basket.....	24
LED 2x2 RECESSED TROFFER PANEL.....	25
LED 2x2 TROFFER PANEL.....	26
LED 2x2 LINEAR DIRECT/INDIRECT RETROFIT KIT.....	27
LED 2x4 LINEAR DIRECT/INDIRECT PANEL single basket.....	28
LED 2x4 LINEAR DIRECT/INDIRECT PANEL dual basket.....	29
LED 2X4 LINEAR DIRECT/INDIRECT RETROFIT KIT.....	30
LED 2x4 RECESSED TROFFER PANEL.....	31
LED 2x4 TROFFER PANEL.....	32
LED 2x2 PANEL.....	33
LED 2x4 PANEL.....	34
LED 2x2 TROFFER PANEL.....	35
LED 2x4 TROFFER PANEL.....	36

LED FIXTURES

LED SHOE BOX AREA LIGHT.....	37
LED CANOPY LIGHT.....	38
LED ROUNDED CANOPY LIGHT.....	39
LED WALLPACK LIGHT.....	40
LED FLOOD-A LIGHT.....	41
LED AREA-B LIGHT.....	42
LED FLOOD-C LIGHT.....	43
LED CIRCULAR AREA LIGHT.....	44
LED LINEAR HIGH BAY.....	45
LED LINEAR HIGH BAY LIGHT.....	46
LED HIGH BAY LIGHT.....	47
LED LOW BAY LIGHT.....	48
LED WALLPACK LIGHT.....	49
LED GARDEN LIGHT.....	50
LED HIGH BAY INDUSTRIAL LIGHT.....	51
LED DUAL SENSOR BI-LEVEL FIXTURE.....	52
LED BI-LEVEL FIXTURE.....	53

LED DOWNLIGHTS

LED 6" COMMERCIAL DOWNLIGHT RETROFIT.....	54
LED 6" COMMERCIAL DOWNLIGHT RETROFIT.....	55
LED 8" COMMERCIAL DOWNLIGHT RETROFIT.....	56
LED 10" COMMERCIAL DOWNLIGHT RETROFIT.....	57

LED BULBS

LED A 19 LAMP 6W.....	58
LED A 19 LAMP 8.5W.....	59
LED R 20 LAMP.....	60
LED BR 30 LAMP.....	61
LED BR 40 LAMP.....	62
LED PAR 20 LAMP.....	63
LED PAR 30 LAMP.....	64
LED CANDLE LAMP 4.5W.....	65
LED CANDLE LAMP 7W.....	66
LED GLOBE LAMP 8W.....	67
LED GLOBE LAMP 5W CLEAR.....	68
LED MR 16 LAMP.....	69
LED MR 16 LAMP.....	70
LED BIG E LAMP.....	71

ARCHITECTURAL FIXTURES

LED LINEAR VAPOR TIGHT.....	72
LED 4FT STRIP.....	73
LED 8FT STRIP.....	74
LED ROUNDED CEILING FIXTURE.....	75
LED ART DECO CEILING FIXTURE.....	76
LED ART DECO CEILING FIXTURE 24.....	77
LED ROUND PANEL LIGHT.....	78
LED UNDER CABINET.....	79
LED LINEAR FIXTURE CURVE.....	80
LED LINEAR BOX FIXTURE.....	81

ACCESSORIES

EASTRON SDM630.....	82
RETROFIT KIT.....	83
EMERGENCY DRIVER.....	84





LED T8 4FT TUBE BALLAST COMPATIBLE

LED T8 INTERNAL and EXTERNAL DRIVER TUBE SERIES has been designed for an indoor environment and damp locations, suitable for restaurants and hotels, shopping malls, retails and groceries, show rooms, airports, project galleries and hospitals. With an exceptional durability and a life span of 50,000 hours. LED tubes have inherent directional beam of 120° which focuses more light downward, high brightness 110 Lm/W and high PF>0.99 and replace 36W fluorescent tubes.

FEATURES

- Internal driver
- Ballast compatible T8 connects to existing electronic or magnetic ballast
- Not dimmable
- High Power Factor > 0.9
- Wire input: Two end
- High Efficiency up to 110 Lm/W
- Standard lifetime 50,000 hours
- High CRI > 80
- Aluminum base and housing
- Working temperature: -4°F~+122°F
- Input power: 100 - 277VAC without the ballast or 100 - 347VAC with ballast



5 Years Warranty

COMPATIBLE BALLAST TYPE

- All instant Start Ballast, Rapid Start Ballast, Programme Start Ballast and Magnetic Ballast



Manufactured by:



Model	Watts	CTT	Lumens	CRI	Size	PF	Cover
GAI-07-BA-T8-4-15W-BI	15	2700K, 3000K, 3500K 4000K, 4500K, 5000K	1800	>80	47.12"	>0.9	Frosted Clear
GAI-07-BA-T8-4-18W-BI	18	2700K, 3000K, 4000K, 5000K	2100				



LED T8 4FT TUBE DIRECT REPLACEMENT

LED T8 DIRECT REPLACEMENT TUBE SERIES has been designed for an indoor environment and damp locations, suitable for restaurants and hotels, shopping malls, retails and groceries, show rooms, airports, project galleries and hospitals. LED T8 tube plug and play has been designed for direct replacement of T8 fluorescent tubes, it is compatible with existing ballasts. Simple and easy installation without rewiring.

FEATURES

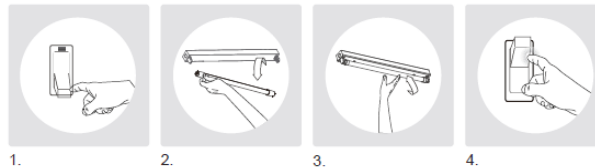
- Direct Replacement - Plug and Play
- Compatible with most brands Electronic Ballast
- Works only with existing ballast
- Beam Angle 150°
- High Power Factor > 0.9
- Standard lifetime 50,000 hours
- High CRI > 80
- Working temperature: -4°F~+122°F
- Input power: 120 - 277VAC



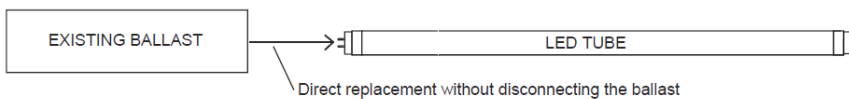
INSTALLATION

Cost Effective Installation without Rewiring
(Input: AC 120-277V, 347V)

1. Turn off power
2. Remove fluorescent tube
3. Install Led tube into fixture
4. Turn on power



5 Years Warranty



Manufactured by:



Model	Watts	CTT	Lumens	CRI	Size	PF	Cover
GAI-01-LDF-T8-4-14.5W-SB	14.5	3500K, 4500K	1600	>80	47.12"	>0.9	Frosted



LED T8 2FT TUBE BALLAST COMPATIBLE

LED T8 BALLAST COMPATIBLE TUBE SERIES has been designed for an indoor environment and damp locations, suitable for restaurants and hotels, shopping malls, retails and groceries, show rooms, airports, project galleries and hospitals. With an exceptional durability and a life span of 50,000 hours. LED T8 Ballast Compatible tube delivers exceptional performance and can directly replace a fluorescent tube without changing wiring or fixtures.

FEATURES

- Internal driver
- Ballast compatible T8 connects to existing electronic or magnetic ballast
- Not dimmable
- High Power Factor > 0.9
- Wire input: Two end
- High Efficiency up to 110 Lm/W
- Standard lifetime 50,000 hours
- High CRI > 80
- Aluminum base and housing
- Working temperature: -4°F~+122°F
- Input power: 100 - 277VAC without the ballast or 100 - 347VAC with ballast



5 Years Warranty

COMPATIBLE BALLAST TYPE

- All instant Start Ballast, Rapid Start Ballast, Programme Start Ballast and Magnetic Ballast



BI: INTERNAL DRIVER



Manufactured by:



Model	Watts	CTT	Lumens	CRI	Size	PF	Cover
GAI-07-BA-T8-2-15W-BI	15	2700K, 3000K, 3500K 4000K, 4500K, 5000K	2032	>81	25.13"	>0.9	Frosted Clear



LED T5 4FT SINGLE INTEGRATED TUBE

LED T8 DIRECT REPLACEMENT TUBE SERIES has been designed for an indoor environment and damp locations, suitable for restaurants and hotels, shopping malls, retails and groceries, show rooms, airports, project galleries and hospitals. LED T8 tube plug and play has been designed for direct replacement of T8 fluorescent tubes, it is compatible with existing ballasts. Simple and easy installation without rewiring.

FEATURES

- Good color uniformity
- High-grade pc cover with light transmittance up to 95%
- 1mm thickness Oxidation housing with good heat dissipation performance
- Internal insulated driver with overload and short circuit protection
- High intensity and brightness
- 50,000 hours lifespan
- Material: PC cover and Aluminum housing
- 4Ft and 5Ft lengths available
- High Power Factor > 0.94
- High Efficiency up to 120 Lm/W
- High CRI >80
- Working temperature: -4°F~+122°F



3 Years Warranty



Manufactured by:



Model	Watts	CTT	Lumens	CRI	Size	PF	Cover
GAI-06-LED-T5-4-15W-X	15	2700K, 3000K, 3500K, 4000K, 4500K, 5000K	1600	83	47.12"	>0.94	Frosted



LED T5 5FT SINGLE INTEGRATED TUBE

LED T5 SINGLE INTEGRATED TUBE has been designed for an indoor environment and damp locations, suitable for restaurants and hotels, shopping malls, retails and groceries, show rooms, airports, project galleries and hospitals. Is the latest in New technology, it replaces the T5 fluorescent tube as a direct fit and allows it to be mounted as a retrofit or as a linear fixture. It is up to 40% more efficient in energy savings compared to the standard fluorescent tube.

FEATURES

- Good color uniformity
- High-grade pc cover with light transmittance up to 95%
- 1mm thickness Oxidation housing with good heat dissipation performance
- Internal insulated driver with overload and short circuit protection
- High intensity and brightness
- 50,000 hours lifespan
- Material: PC cover and Aluminum housing
- 4Ft and 5Ft lenghts available
- High Power Factor > 0.94
- High Efficiency up to 120 Lm/W
- High CRI > 80
- Working temperature: -4°F~+122°F



3 Years Warranty



Manufactured by:



Model	Watts	CTT	Lumens	CRI	Size	PF	Cover
GAI-06-LED-T5-5-20W-X	20	3000K, 3500K, 4000K, 4500K, 5000K	1800	80	60"	>0.9	Frosted



LED T5 4FT TUBE

LED T5 EXTERNAL DRIVER TUBE SERIES delivers exceptional performance in a low-profile design. General illumination for homes, offices, restaurants, hotels, malls, buses, trains, warehouses, parking lots, hospitals, airports. Task lighting for cabinets, cupboards or any other places where accent lighting is required. Retail display lighting for the articles in stores and shops; back lighting for square billboards or advertisement boards.

FEATURES

- External driver
- High Power Factor > 0.99
- High Efficiency up to 106 Lm/W
- Standard lifetime 50,000 hours
- High CRI > 80
- Aluminum base and housing
- Working temperature: -4°F~+122°F
- Input power: 100 - 277VAC

OPTIONS

- BO: external driver
- NT: non dimmable two side connections
- NS: non dimmable single side connection
- DT: dimmable two side connections
- DS: dimmable single side connection



5 Years Warranty



Manufactured by:



Model	Watts	CTT	Lumens	CRI	Size	PF	Cover
GAI-07-LED-T5-4-15W-X	15	2700K, 3000K, 3500K 4000K, 4500K, 5000K	1650				
GAI-07-LED-T5-4-22W-X	22	3000K, 3500K 4000K, 4500K, 5000K	2397	>80	47.12"	>0.99	Frosted Clear
GAI-07-LED-T5-4-25W-X	25	3000K, 3500K 4000K, 4500K, 5000K	2680				
GAI-07-LED-T5-4-30W-X	30	3000K, 3500K 4000K, 4500K, 5000K	2961				



LED T5 3FT TUBE

LED Ballast Compatible T5 TUBE delivers exceptional performance and can directly replace a fluorescent tube without changing wiring or fixtures. High output, LED chips provide uniform and energy efficient illumination to replace any existing T5 tubes. Ballast Compatible LED T5 TUBE is UL and cUL certified and lasts 50,000 hours.

FEATURES

- Internal drive
- High CRI >8
- High Efficiency, up to 85 Lm/W
- Ballast Compatible T5 connects to existing electronic ballast
- Aluminum casing
- Dimmable
- Single end power
- Two prong mounting pins
- Working temperature : -20°C~+45°C
- UL/cUL Certified



5 Years Warranty



Manufactured by:



Model	Watts	CTT	Lumens	CRI	Beam	PF	Cover
GAI-12-LED-T5-3-15W-X	15	3000K, 3500K 4000K, 5000K	1650	>80	260°	>0.9	Frosted



LED T5 2FT TUBE

LED T5 EXTERNAL DRIVER TUBE SERIES delivers exceptional performance in a low-profile design. General illumination for homes, offices, restaurants, hotels, malls, buses, trains, warehouses, parking lots, hospitals, airports. Task lighting for cabinets, cupboards or any other places where accent lighting is required. Retail display lighting for the articles in stores and shops; back lighting for square billboards or advertisement boards.

FEATURES

- External driver
- High Power Factor > 0.99
- High Efficiency up to 115 Lm/W
- Standard lifetime 50,000 hours
- High CRI > 81
- Aluminum base and housing
- Working temperature: -4°F~+122°F
- Input power: 100 - 277VAC

OPTIONS

- BO: external driver BI: internal driver
- NT: non dimmable two side connections
- NS: non dimmable single side connection
- DT: dimmable two side connections
- DS: dimmable single side connection



5 Years Warranty



Manufactured by:



Model	Watts	CTT	Lumens	CRI	Size	PF	Cover
GAI-07-LED-T5-2-15W-X	15	2700K, 3000K, 3500K 4000K, 4500K, 5000K	1683	>81	23.15"	>0.99	Frosted Clear



LED ULTRA SLIM ROUND PANEL

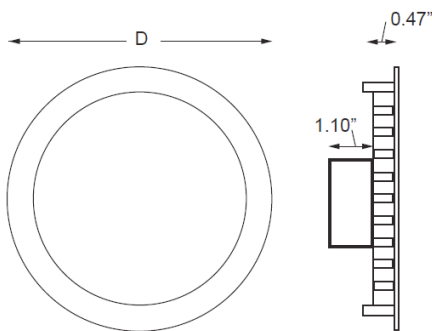
LED ULTRA SLIM ROUND PANEL LIGHT SERIES adopts qualified super bright LED as light source, which is stable, long life and no UV & IR emission. The anodized aluminum frame is stylish and fashionable with everlasting color. It is powered by low voltage constant current driver, which is safety, energy saving and long life.

FEATURES

- Ultra slim design
- Different frame designs and colors are available
- Easy and various installation styles
- Dimmable compatible with Dali
- Lighting sensors and motion sensor are optional
- Emergency battery pack lasts for 3 hours
- CRI > 80, ErP compatible
- PF > 0.95
- Beam Angle 120°
- 3 years warranty for the driver



5 Years Warranty



Manufactured by:
 **Green Apple**
INTERNATIONAL

Model	Watts	CTT	Lumens	CRI	Size	Diffuser
GAI-21-RPL-4-8W-X	8	3000K, 4000K, 5000K	500	>80	Ø 4"	Frosted
GAI-21-RPL-6-15W-X	15	3000K, 4000K, 5000K	1000	>80	Ø 6"	
GAI-21-RPL-8-24W-X	24	3000K, 4000K, 5000K	1650	>80	Ø 8"	

Lower Profile means
HIGHER CEILING HEIGHTS!!!



LED 5" WIDE FLAT LINEAR PANEL (4 FT)

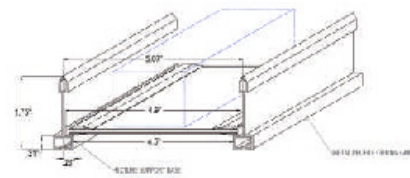
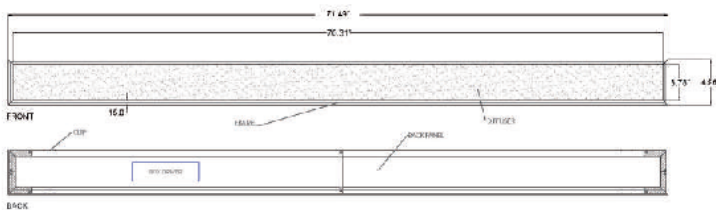
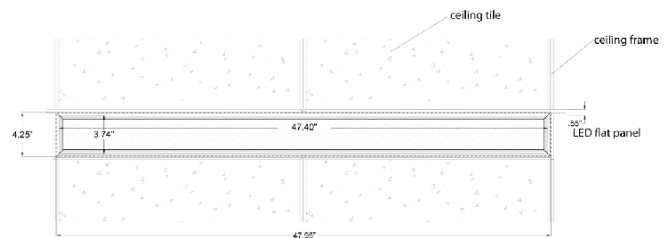
LED 4ft x 5" PANELS are designed for indoor environments, damp locations, hotels, retails, conference rooms, hospital and high-end office space. It delivers high lumens of exceptional CRI + 80. It is a perfect solution for new construction or retrofitting existing fluorescent troffer fixtures. Its low profile design was designed for high-end office spaces.

FEATURES

- Diffused lens gives an evenly illuminated appearance
- Luminous efficiency 87 Lm/W
- Professional thermal design
- Special processing for surface
- Elegant and superior appearance
- Contains no lead, glass or mercury
- High Power Factor > 0.9
- Standard lifetime 50,000 hours
- Aluminum base and housing
- Input power: 100 - 277VAC
- Dimming
- Fits safely underneath ceiling duct



5 Years Warranty



Model	Watts	CTT	Lumens	CRI	Size	PF	Cover
GAI-30-LED-PAN-4-20W-X	20	3500K, 4000K, 5000K	1740	>80	47.7"x4.96"	>0.9	Frosted

Lower Profile means
HIGHER CEILING HEIGHTS!!!



LED 5" WIDE FLAT LINEAR PANEL (6 FT)

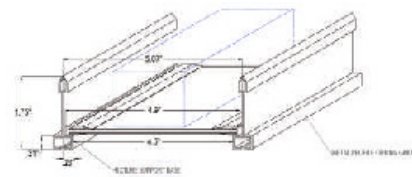
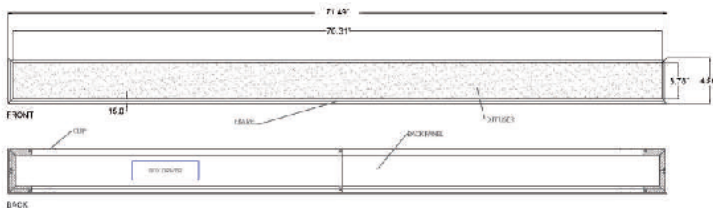
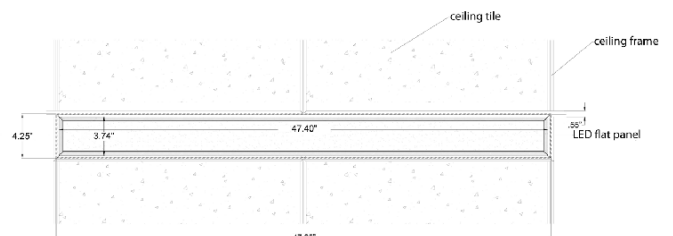
LED 6ft x 5" PANELS are designed for indoor environments, damp locations, hotels, retails, conference rooms, hospital and high-end office space. It delivers high lumens of exceptional CRI + 80. It is a perfect solution for new construction or retrofitting existing fluorescent troffer fixtures. Its low profile design was designed for high-end office spaces.

FEATURES

- Diffused lens gives an evenly illuminated appearance
- Luminous efficiency 87 Lm/W
- Professional thermal design
- Special processing for surface
- Elegant and superior appearance
- Contains no lead, glass or mercury
- High Power Factor > 0.9
- Standard lifetime 50,000 hours
- Aluminum base and housing
- Input power: 100 - 277VAC
- Dimming
- Fits safely underneath ceiling duct



5 Years Warranty



Model	Watts	CTT	Lumens	CRI	Size	PF	Cover
GAI-30-LED-PAN-6-30W-X	30	3500K, 4000K, 5000K	2610	>80	72"x4.96"	>0.9	Frosted



LED LINEAR FIXTURE (pendant)

LED LINEAR FIXTURE is an all new panel light specially designed for suspended installation. Thanks to its solid structure that LED LINEAR does not bend like normal panel light when suspended. The LED LINEAR FIXTURE is also designed to give direct, indirect light towards the ceiling and the ground, creating a harmonious and mood pleasing lighting experience.

FEATURES

- Ultra modern, stylish and Innovative design
- It's designed for suspended up/down lighting
- Transparent
- No UV or IR emissions
- Durable with life span over 50,000 hours
- Simple and convenient installation
- Available in white or black

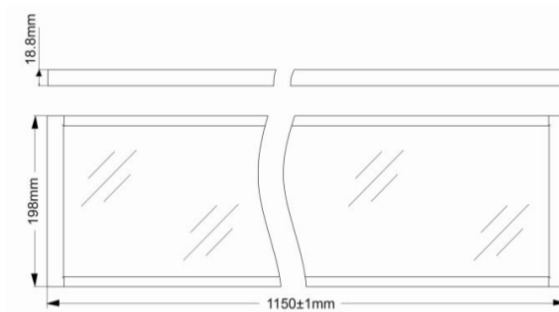


APPLICATIONS

Meets the general and decoration lighting Optics Opal/Micro Prismatic environment such as:

- Offices
- Hotels
- Shopping Malls
- Schools
- Hospitals
- Meeting Rooms
- Restaurants

5 Years Warranty



Manufactured by:



Model	Watts	CTT	Lumens	CRI	Size	PF	Cover
-------	-------	-----	--------	-----	------	----	-------

GAI-21-LED-PAN-40W-XX	40	3000K, 4000K, 6000K	3400	>80	45.3"x7.8"x0.7"	>0.95	Prismatic
-----------------------	----	---------------------	------	-----	-----------------	-------	-----------



LED LINEAR BOX

LED LINEAR BOX have a elegant and stylish modern design with fine workmanship. This Ideal design for office and commercial lighting. LINEAR BOX is used widely in government buildings, commercial centers, boutique stores and home decorations.

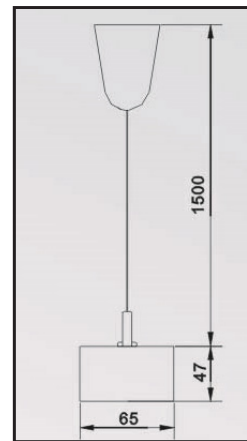
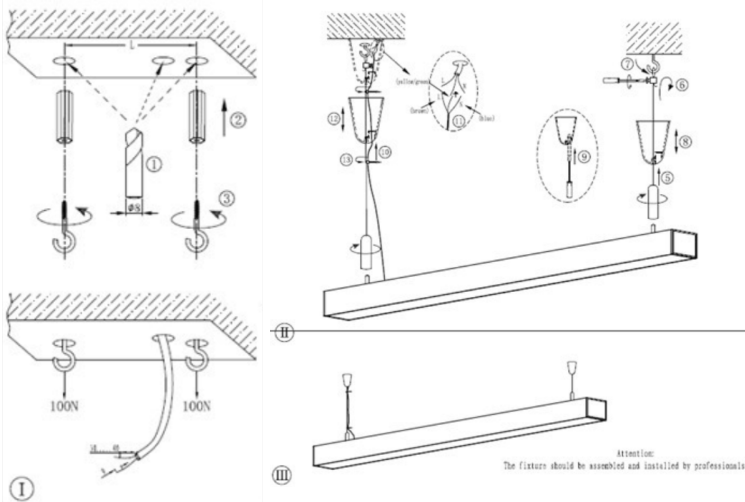
FEATURES

- Single pendant luminaire with diffused lighting
- With LED strips inside
- Beam Angle: 120°
- Extruded aluminium body with anodized finish
- Diffuser in opaline PMMA
- Supplied with suspension kit and power feed cable 1.5M
- LED driver build-in
- Direct light
- Operating time: 35,000 hours



3 Years Warranty

INSTALLATION



Manufactured by:
 Green Apple INTERNATIONAL

Model	Watts	CTT	Lumens	CRI	Size	PF	Cover
GAI-18-LED-BOX-14.4W-X	14.4	3000K, 4000K, 6000K	1296	>80	24.45"x2.56"x1.85"	0.9	
GAI-18-LED-BOX-21.6W-X	21.6	3000K, 4000K, 6000K	1944	>80	36.26"x2.56"x1.85"	0.9	Diffuser
GAI-18-LED-BOX-28.8W-X	28.8	3000K, 4000K, 6000K	2592	>80	48.07"x2.56"x1.85"	0.92	
GAI-18-LED-BOX-36W-X	36	3000K, 4000K, 6000K	3240	>80	59.88"x2.56"x1.85"	0.95	



LED 2x2 PANEL

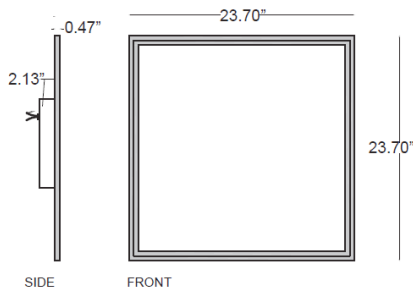
LED 2x2 PANEL SERIES has been designed for indoor environments, damp locations, hotels, retails, conference rooms, hospitals. It delivers high lumens of exceptional CRI + 80. It is a perfect solution for new construction or retrofitting existing fluorescent troffer fixtures. Its clean design allows it to be installed in different applications.

FEATURES

- Diffused lens gives an evenly illuminated appearance
- Luminous efficiency 91 Lm/W
- Professional thermal design
- Special processing for surface
- Elegant and superior appearance
- Contains no lead, glass or mercury
- High Power Factor > 0.9
- Standard lifetime 50,000 hours
- High CRI > 80
- Aluminum base and housing
- Working temperature: -4°F~+122°F, IP 65
- Input power: 100 - 277VAC
- Input power: 100 - 277VAC



5 Years Warranty



Manufactured by:



Model	Watts	CTT	Lumens	CRI	Size	PF	Lens
GAIVS22-DM	50	4000K, 5000K	3600	>80	23.7"x23.7"	>0.9	Diffused
GAIVS22-DH	50	4000K, 5000K	4900				



LED 2x4 PANEL

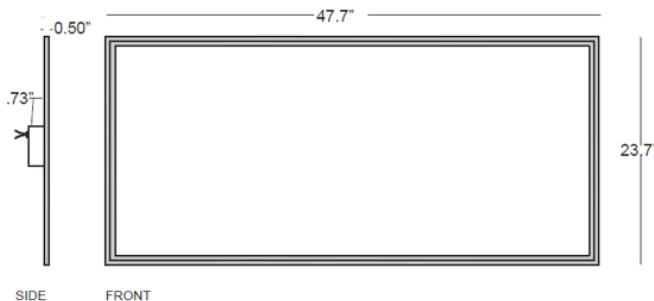
LED 2x4 PANEL SERIES has been designed for indoor environments, damp locations, hotels, retails, conference rooms, hospitals. It delivers high lumens of exceptional CRI + 80. It is a perfect solution for new construction or retrofitting existing fluorescent troffer fixtures. Its clean design allows it to be installed in different applications.

FEATURES

- Diffused lens gives an evenly illuminated appearance
- Luminous efficiency 91 Lm/W
- Professional thermal design
- Special processing for surface
- Elegant and superior appearance
- Contains no lead, glass or mercury
- High Power Factor > 0.9
- Standard lifetime 50,000 hours
- Dimming 0-10V
- Aluminum base and housing
- Working temperature: -4°F~+122°F, IP 65
- Input power: 100 - 277VAC



5 Years Warranty



Manufactured by:



Model	Watts	CTT	Lumens	CRI	Size	PF	Lens
GAIVS24-DM40	50	4000K	4200	>82	47.7"x23.7"	>0.9	Diffused
GAIVS24-DM50	50	5000K	4200				
GAIVS24-DH40	63	4000K	5500	>82	47.7"x23.7"	>0.9	Diffused
GAIVS24-DH50	63	5000K	5500				



LED 1x4 PANEL

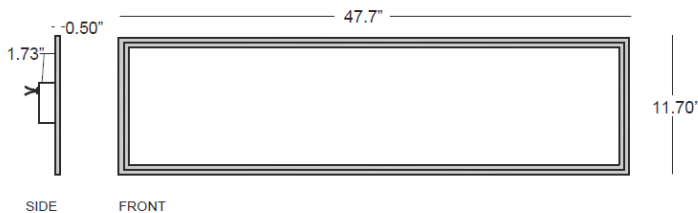
LED 1x4 PANEL SERIES has been designed for indoor environments, damp locations, hotels, retails, conference rooms, hospitals. It delivers high lumens of exceptional CRI + 80. It is a perfect solution for new construction or retrofitting existing fluorescent troffer fixtures. Its clean design allows it to be installed in different applications..

FEATURES

- Diffused lens gives an evenly illuminated appearance
- Luminous efficiency 87 Lm/W
- Professional thermal design
- Special processing for surface
- Elegant and superior appearance
- Contains no lead, glass or mercury
- High Power Factor > 0.9
- Standard lifetime 50,000 hours
- Dimming 0-10V
- Aluminum base and housing
- Working temperature: -4°F~+122°F, IP 65
- Input power: 100 - 277VAC



5 Years Warranty



Manufactured by:



Model	Watts	CTT	Lumens	CRI	Size	PF	Lens
GAIVS14-DH40	40	4000K	4377	>80	47.7"x11.7"	>0.9	Diffused
GAIVS14-DH50	50	5000K	4377				

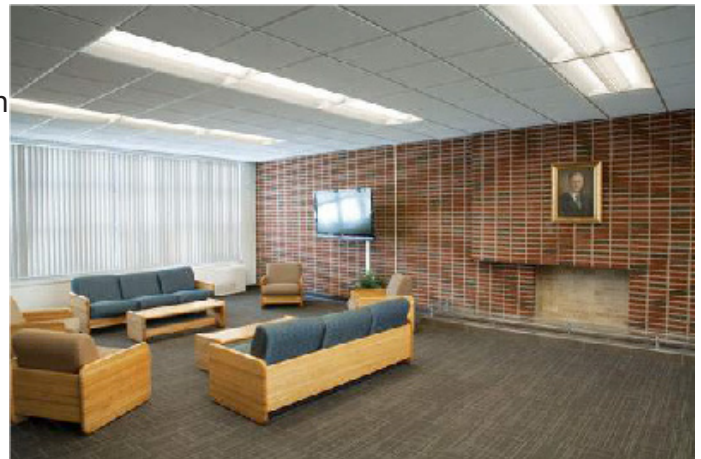


LED 1x4 LINEAR DIRECT/INDIRECT PANEL

LED 1x4 LINEAR DIRECT/INDIRECT PANEL SERIES is a shallow dual center basket LED recessed direct/indirect, more energy saving, longer lifespan, and a better CRI compare to the T5/T8 tubes lighting system. This LED fixture is ideal for all commercial and industrial building requiring general illumination with recessed configurations. High performance and high transparency diffuser provides white translucent inlay for visual comfort, more light and a fresh look.

FEATURES

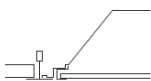
- Die formed of 24 gauge cold-rolled steel body
- High reflectance baked white acrylic matte paint finish
- High reflectance white interior reflector
- Easy relamping and maintenance
- Fully recessed luminaire fits standard T-Grid ceilings
- 2 pcs 2 ft long LED modules
- Luminous efficiency 104 Lm/W
- High Power Factor > 0.9
- Standard lifetime 50,000 hours
- High CRI > 80
- Working temperature: -4°F~+122°F, IP 65
- Input power: 100 - 277VAC



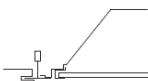
5 Years Warranty

INSTALLATION

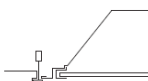
G
Grid / Lay-in
Standard



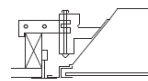
G
Concealed T



G
Slot Grid



F
Flange Trim
With Supporting
Swing Gates



* Standard G (Grid) Type Fixtures can be field converted by adding trim kits.

*** When ordering Flange Kit for installation in drywall ceilings, see options and accessories compatibility section and ordering logic.

Ceiling Type	Trim Type
Exposed Grid	G
Concealed T	G
Slot Grid	G
Flange	G***



Manufactured by:



Model	Watts	CTT	Lumens	CRI	Size	PF	Lens
GAI-04-LDI-1X4-36W-HS	36	3000K, 3500K, 4000K	3701	>80	48"x11.8"x4.1"	>0.9	Diffused
GAI-04-LDI-1X4-24W-LS	24	3000K, 3500K, 4000K	2431				



LED 1x4 RECESSED TROFFER PANEL

LED 1x4 RECESSED TROFFER PANEL SERIES has been designed for all commercial and industrial building requiring general illumination with recessed configurations. The troffer series is more energy saving and longer lifespan compared to T5/T8 lighting system. High performance and high transparency diffuser provides white translucent inlay for visual comfort, more light and a fresh look.

FEATURES

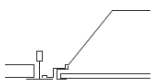
- Die formed of 24 gauge galvanised steel
- High reflectance baked white acrylic matte paint finish
- Smooth edges for easy handling
- High reflectance white interior reflector
- Easy relamping and maintenance
- Fully recessed luminaire fits standard T-Grid ceilings
- Luminous efficiency 102 Lm/W
- High Power Factor > 0.9
- Standard lifetime 50,000 hours
- High CRI > 80
- Working temperature: -4°F~+122°F, IP 65
- Input power: 100 - 277VAC



5 Years Warranty

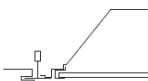
INSTALLATION

G
Grid /Lay-in
Standard

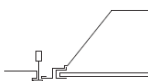


* Standard G (Grid) Type Fixtures can be field converted by adding trim kits.

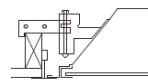
G
Concealed T



G
Slot Grid



F
Flange Trim
With Supporting
Swing Gates



*** When ordering Flange Kit for installation in drywall ceilings, see options and accessories compatibility section and ordering logic.

Ceiling Type	Trim Type
Exposed Grid	G
Concealed T	G
Slot Grid	G
Flange	G***



Manufactured by:



Model	Watts	CTT	Lumens	CRI	Size	PF	Lens
-------	-------	-----	--------	-----	------	----	------

GAI-04-TR-1X4-42W-X	42	3000K, 3500K, 4000K	4365	>80	48"x11.8"x3.3"	>0.9	Diffused
---------------------	----	---------------------	------	-----	----------------	------	----------



LED 1x4 TROFFER PANEL

LED 1x4 TROFFER PANEL SERIES has been designed for all commercial and industrial building requiring general illumination with recessed configurations. The troffer series is more energy saving and longer lifespan compared to T5/T8 lighting system. High performance and high transparency diffuser provides white translucent inlay for visual comfort, more light and a fresh look.

FEATURES

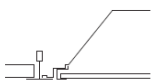
- Die formed of 24 gauge gold-rolled steel body
- High reflectance baked white acrylic matte paint finish
- Smooth edges for easy handling
- High reflectance white interior reflector
- Easy relamping and maintenance
- Fully recessed luminaire fits standard T-Grid ceilings
- Luminous efficiency 92 Lm/W
- High Power Factor > 0.9
- Standard lifetime 50,000 hours
- High CRI > 80
- Working temperature: -4°F~+122°F, IP 65



5 Years Warranty

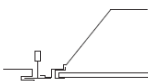
INSTALLATION

G
Grid /Lay-in
Standard

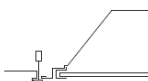


* Standard G (Grid) Type Fixtures can be field converted by adding trim kits.

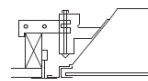
G
Concealed T



G
Slot Grid



F
Flange Trim
With Supporting
Swing Gates



*** When ordering Flange Kit for installation in drywall ceilings, see options and accessories compatibility section and ordering logic.

Ceiling Type	Trim Type
Exposed Grid	G
Concealed T	G
Slot Grid	G
Flange	G***



Manufactured by:



Model	Watts	CTT	Lumens	CRI	Size	PF	Lens
GAI-04-TP-1X4-40W-H	40	3000K, 3500K, 4000K	3725	>80	48"x11.8"x3.3"	>0.9	Diffused
GAI-04-TP-1X4-35W-L	35	3000K, 3500K, 4000K	3089				



LED 2X2 LINEAR DIRECT/INDIRECT PANEL (Single Basket)

LED 2X2 LINEAR DIRECT/INDIRECT PANEL is a fixture that adopts the latest in optical and LED technology for use in many commercial applications. Provides a single pleasant volumetric soft light that fills any interior space, giving it a larger, brighter, and more productive ambiance. The delivered comfortable and evenly distributed light eliminates surface shadows and ensures a glare-free environment perfect for offices, schools, multipurpose rooms, hospitals and most interior spaces.

FEATURES

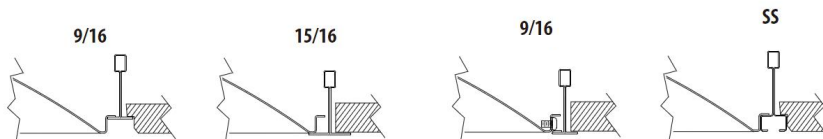
- Efficacy: >110LPW
- Input Voltage 120-277VAC
- The well-designed luminaire structure with excellent heat-dissipation features ensures the steady performance and durable lifetime
- Temperature Limited: -20°C 55°C
- Standard Lifetime: Designed minimum 50,000 hours
- Mounting: Grid/Lay-in Standard
- The LDI is powered with standard a 0-10V continuous dimming driver ranging from 10%-100% that works with 0-10V control/dimmer
- Suitable for Damp Location, Type IC



5 Years Warranty



INSTALLATION



Manufactured by:



Model	Watts	CTT	Lumens	CRI	Size	PF	Lens
GAI-04-LDI-2x2-36W-HS	36	3000K, 3500K, 4000K	3563	>80	23.8"x23.8"x4.1"	>0.9	Diffused
GAI-04-LDI-2x2-24W-LS	24	3000K, 3500K, 4000K	2378				



LED 2x2 LINEAR DIRECT/INDIRECT PANEL (Dual Basket)

LED 2x2 LINEAR DIRECT/INDIRECT PANEL SERIES is a shallow dual center basket LED recessed direct/indirect, more energy saving, longer lifespan, and a better CRI compare to the T5/T8 tubes lighting system. This LED fixture is ideal for retails, conference rooms, hotels, offices, school facilities and hospitals. High performance and high transparency diffuser provides white translucent inlay for visual comfort, more light and a fresh look.

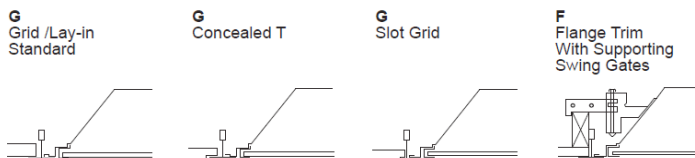
FEATURES

- Die formed of 24 gauge cold-rolled steel body
- High reflectance baked white acrylic matte paint finish
- High reflectance white interior reflector
- Easy relamping and maintenance
- Fully recessed luminaire fits standard T-Grid ceilings
- 2 pcs 2 ft long LED modules
- Luminous efficiency 102.9 Lm/W
- High Power Factor > 0.9
- Standard lifetime 50,000 hours
- High CRI > 80
- Working temperature: -4°F~+122°F, IP 65
- Input power: 100 - 277VAC



5 Years Warranty

INSTALLATION



* Standard G (Grid) Type Fixtures can be field converted by adding trim kits.

*** When ordering Flange Kit for installation in drywall ceilings, see options and accessories compatibility section and ordering logic.

Ceiling Type	Trim Type
Exposed Grid	G
Concealed T	G
Slot Grid	G
Flange	G***



Manufactured by:



Model	Watts	CTT	Lumens	CRI	Size	PF	Lens
GAI-04-LDI-2x2-36W-H	36	3000K, 3500K, 4000K	3637	>80	23.8"x23.8"x4.1"	>0.9	Diffused
GAI-04-LDI-2x2-24W-L	24	3000K, 3500K, 4000K	2400				

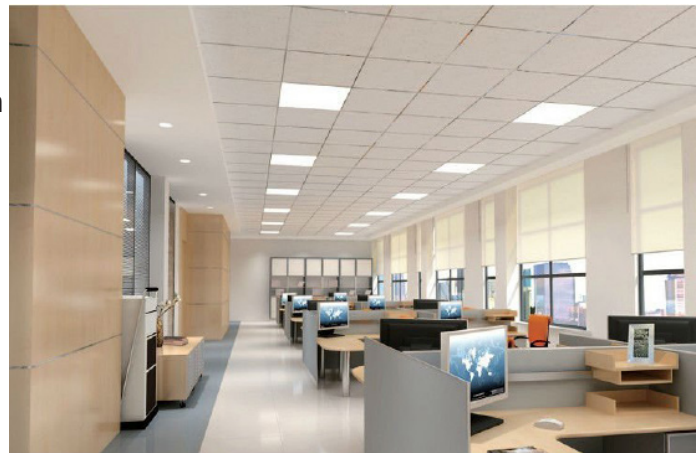


LED 2x2 RECESSED TROFFER PANEL

LED 2x2 RECESSED TROFFER PANEL SERIES has been designed for all commercial and industrial building requiring general illumination with recessed configurations. The troffer series is more energy saving and longer lifespan compared to T5/T8 lighting system. High performance and high transparency diffuser provides white translucent inlay for visual comfort, more light and a fresh look.

FEATURES

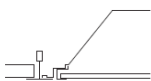
- Die formed of 24 gauge galvanised steel
- High reflectance baked white acrylic matte paint finish
- Smooth edges for easy handling
- High reflectance white interior reflector
- Easy relamping and maintenance
- Fully recessed luminaire fits standard T-Grid ceilings
- Luminous efficiency 99 Lm/W
- High Power Factor > 0.9
- Standard lifetime 50,000 hours
- High CRI > 80
- Working temperature: -4°F~+122°F, IP 65
- Input power: 100 - 277VAC



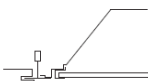
5 Years Warranty

INSTALLATION

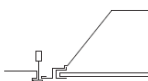
G
Grid /Lay-in
Standard



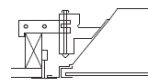
G
Concealed T



G
Slot Grid



F
Flange Trim
With Supporting
Swing Gates



* Standard G (Grid) Type Fixtures can be field converted by adding trim kits.

*** When ordering Flange Kit for installation in drywall ceilings, see options and accessories compatibility section and ordering logic.

Ceiling Type	Trim Type
Exposed Grid	G
Concealed T	G
Slot Grid	G
Flange	G***



Manufactured by:



Model	Watts	CTT	Lumens	CRI	Size	PF	Lens
GAI-04-TR-2x2-24W-X	24	3000K, 3500K, 4000K	2368	>80	23.8"x23.8"x3.3"	>0.9	Diffused
GAI-04-TR-2x2-32W-X	32	3000K, 3500K, 4000K	3276				
GAI-04-TR-2x2-42W-X	42	3000K, 3500K, 4000K	4367				

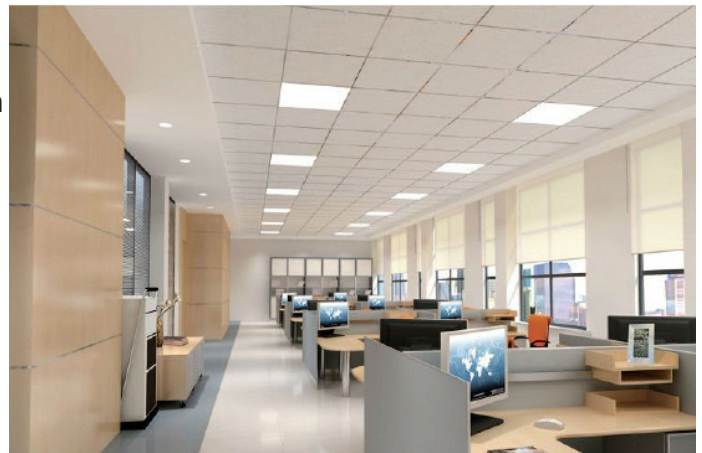


LED 2x2 TROFFER PANEL

LED 2x2 TROFFER PANEL SERIES has been designed for all commercial and industrial building requiring general illumination with recessed configurations. The troffer series is more energy saving and longer lifespan compared to T5/T8 lighting system. High performance and high transparency diffuser provides white translucent inlay for visual comfort, more light and a fresh look.

FEATURES

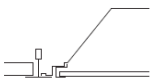
- Die formed of 24 gauge cold-rolled steel body
- High reflectance baked white acrylic matte paint finish
- Smooth edges for easy handling
- High reflectance white interior reflector
- Easy relamping and maintenance
- Fully recessed luminaire fits standard T-Grid ceilings
- Luminous efficiency 98 Lm/W
- High Power Factor > 0.9
- Standard lifetime 50,000 hours
- High CRI > 80
- Working temperature: -4°F~+122°F, IP 65
- Input power: 100 - 277VAC



5 Years Warranty

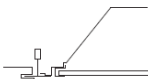
INSTALLATION

G
Grid /Lay-in
Standard

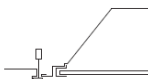


* Standard G (Grid) Type Fixtures can be field converted by adding trim kits.

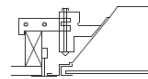
G
Concealed T



G
Slot Grid



F
Flange Trim
With Supporting
Swing Gates



*** When ordering Flange Kit for installation in drywall ceilings, see options and accessories compatibility section and ordering logic.

Ceiling Type	Trim Type
Exposed Grid	G
Concealed T	G
Slot Grid	G
Flange	G***



Manufactured by:



Model	Watts	CTT	Lumens	CRI	Size	PF	Lens
GAI-04-TP-2x2-40W-H	40	3000K, 3500K, 4000K	3848	>80	23.8"x23.8"x3.3"	>0.9	Diffused
GAI-04-TP-2x2-35W-L	35	3000K, 3500K, 4000K	3400				

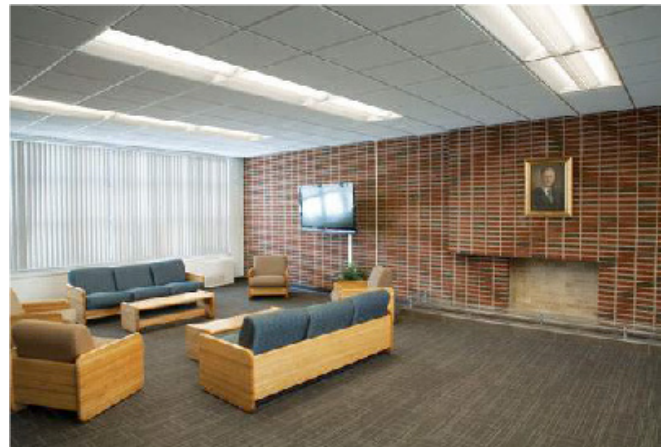


LED 2X2 LINEAR DIRECT/INDIRECT RETROFIT KIT

LED 2x2 LED RETROFIT KIT provides the perfect method for converting inefficient troffers to efficient, long-life LED. The kit is completely assembled, allowing fast and accurate installation. This LED fixture is ideal for retail, conference rooms, hotels, offices, school facilities and hospitals. High performance and high transparency diffuser provides white translucent inlay for visual comfort, more light and a fresh look.

FEATURES

- Die formed of 24 gauge cold-rolled steel body
- All steel surface are painted after fabrication with high gloss baked white matte powder painted.
- Tool-less and easy accessibility to light engine for convertibility, maintenance and for next generation components.
- Temperature Limited: -20°C 55°C
- Input Voltage: 120-277V
- The LDI is powered with standard a 0-10V continuous dimming driver ranging from 10%-100% that works with 0-10V control/dimmer
- Standard lifetime 50,000 hours

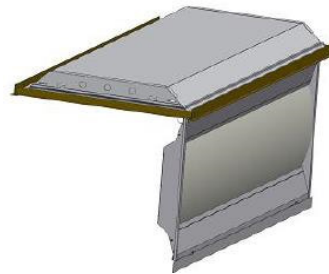


5 Years Warranty



INSTALLATION STEPS

1. Turn off power; remove existing lens or louver,
2. Remove existing lamps and ballast cover, then disconnect power.
3. Install supplied brackets and then the completely assembled in bracket holes and reconnect wiring.
4. Close the lens and secure latches shut.



Manufactured by:



Model	Watts	CTT	Efficacy lm/w	CRI	Size	PF
GAI-04-TRK-2x2-18W-LS-X	18		125			
GAI-04-TRK-2x2-24W-LS-X	24		118			
GAI-04-TRK-2x2-27W-HS-X	24	3000K, 3500K, 4000K, 5000K	125	>80	22.48"x20.63"x2.76"	>0.9
GAI-04-TRK-2x2-30W-HS-X	27		122			
GAI-04-TRK-2x2-34W-HS-X	30		120			



LED 2X4 LINEAR DIRECT/INDIRECT PANEL (Single Basket)

LED 2X4 LINEAR DIRECT/INDIRECT PANEL is a fixture that adopts the latest in optical and LED technology for use in many commercial applications. Provides a single pleasant volumetric soft light that fills any interior space, giving it a larger, brighter, and more productive ambiance. The delivered comfortable and evenly distributed light eliminates surface shadows and ensures a glare-free environment perfect for offices, schools, multipurpose rooms, hospitals and most interior spaces.

FEATURES

- Efficacy:>110LPW
- Input Voltage 120-277VAC
- The well-designed luminaire structure with excellent heat-dissipation features ensures the steady performance and durable lifetime
- Working Ambient Temperature: -20°C 55°C
- Standard Lifetime:Designed minimum 50,000 hours
- Mounting: Grid/Lay-in Standard
- The LDI s powered with standard a 0-10V continuous dimming driver ranging from 10%-100% that works with 0-10V control/dimmer
- Suitable for Damp Location,Type IC



5 Years Warranty



INSTALLATION



Manufactured by:



Model	Watts	CTT	Efficacy lm/w	CRI	Size	PF
GAI-04-LDI-2x4-27W-SS	27		125			
GAI-04-LDI-2x4-30W-SS	30		120			
GAI-04-LDI-2x4-34W-SS	34		117			
GAI-04-LDI-2x4-36W-LS	36	3000K, 3500K, 4000K, 5000K	126	>80	47.71"x23.78"x3.62"	>0.9
GAI-04-LDI-2x4-42W-LS	42		120			
GAI-04-LDI-2x4-50W-HS	50		130			
GAI-04-LDI-2x4-60W-HS	60		126			
GAI-04-LDI-2x4-68W-HS	68		117			



LED 2x4 LINEAR DIRECT/INDIRECT PANEL (Dual Basket)

LED 2x4 LINEAR DIRECT/INDIRECT PANEL SERIES is a shallow dual center basket LED recessed direct/indirect, more energy saving, longer lifespan, and a better CRI compare to the T5/T8 tubes lighting system. This LED fixture is ideal for retails, conference rooms, hotels, offices, school facilities and hospitals. High performance and high transparency diffuser provides white translucent inlay for visual comfort, more light and a fresh look.

FEATURES

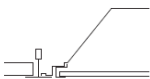
- Die formed of 24 gauge cold-rolled steel body
- High reflectance baked white acrylic matte paint finish
- High reflectance white interior reflector
- Easy relamping and maintenance
- Fully recessed luminaire fits standard T-Grid ceilings
- 2 pcs 2 ft long LED modules
- Luminous efficiency 104 Lm/W
- High Power Factor > 0.9
- Standard lifetime 50,000 hours
- High CRI > 80
- Working temperature: -4°F~+122°F, IP 65



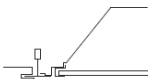
5 Years Warranty

INSTALLATION

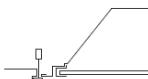
G
Grid /Lay-in
Standard



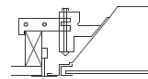
G
Concealed T



G
Slot Grid



F
Flange Trim
With Supporting
Swing Gates



* Standard G (Grid) Type Fixtures can be field converted by adding trim kits.

*** When ordering Flange Kit for installation in drywall ceilings, see options and accessories compatibility section and ordering logic.

Ceiling Type	Trim Type
Exposed Grid	G
Concealed T	G
Slot Grid	G
Flange	G***



Manufactured by:



Model	Watts	CTT	Lumens	CRI	Size	PF	Lens
GAI-04-LDI-2x4-68W-H	68	3000K, 3500K, 4000K	7261	>80	47.8"x23.8"x3.3"	>0.9	Diffused
GAI-04-LDI-2x4-42W-L	42	3000K, 3500K, 4000K	4568				



LED 2X4 LINEAR DIRECT/INDIRECT RETROFIT KIT

LED 2x4 LED RETROFIT KIT provides the perfect method for converting inefficient troffers to efficient, long-life LED. The kit is completely assembled, allowing fast and accurate installation. This LED fixture is ideal for retail, conference rooms, hotels, offices, school facilities and hospitals. High performance and high transparency diffuser provides white translucent inlay for visual comfort, more light and a fresh look.

FEATURES

- Die formed of 24 gauge cold-rolled steel body
- All steel surface are painted after fabrication with high gloss baked white matte powder painted.
- Tool-less and easy accessibility to light engine for convertibility, maintenance and for next generation components.
- Temperature Limited: -20°C 55°C
- Input Voltage: 120-277V
- The LDI is powered with standard a 0-10V continuous dimming driver ranging from 10%-100% that works with 0-10V control/dimmer
- Standard lifetime 50,000 hours

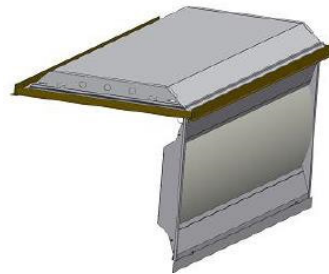


5 Years Warranty



INSTALLATION STEPS

1. Turn off power; remove existing lens or louver,
2. Remove existing lamps and ballast cover, then disconnect power.
3. Install supplied brackets and then the completely assembled in bracket holes and reconnect wiring.
4. Close the lens and secure latches shut.



Manufactured by:



Model	Watts	CTT	Efficacy lm/w	CRI	Size	PF
GAI-04-TRK-2x4-24W-X	24		127			
GAI-04-TRK-2x4-27W-X	27		123			
GAI-04-TRK-2x4-30W-X	30		120			
GAI-04-TRK-2x4-36W-X	36	3000K, 3500K, 4000K, 5000K	126	>80	46.65"x20.63"x2.76"	>0.9
GAI-04-TRK-2x4-38W-X	38		97.36			
GAI-04-TRK-2x4-44W-X	44		122			
GAI-04-TRK-2x4-45W-X	45		97.77			



LED 2x4 RECESSED TROFFER PANEL

LED 2x4 RECESSED TROFFER PANEL SERIES has been designed for all commercial and industrial building requiring general illumination with recessed configurations. The troffer series is more energy saving and longer lifespan compared to T5/T8 lighting system. High performance and high transparency diffuser provides white translucent inlay for visual comfort, more light and a fresh look.

FEATURES

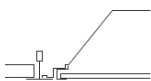
- Die formed of 24 gauge galvanised steel
- High reflectance baked white acrylic matte paint finish
- Smooth edges for easy handling
- High reflectance white interior reflector
- Easy relamping and maintenance
- Fully recessed luminaire fits standard T-Grid ceilings
- Luminous efficiency 108 Lm/W
- High Power Factor > 0.9
- Standard lifetime 50,000 hours
- High CRI > 80
- Working temperature: -4°F~+122°F, IP 65
- Input power: 100 - 277VAC



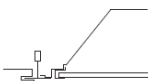
5 Years Warranty

INSTALLATION

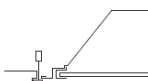
G
Grid /Lay-in
Standard



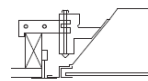
G
Concealed T



G
Slot Grid



F
Flange Trim
With Supporting
Swing Gates



* Standard G (Grid) Type Fixtures can be field converted by adding trim kits.

*** When ordering Flange Kit for installation in drywall ceilings, see options and accessories compatibility section and ordering logic.

Ceiling Type	Trim Type
Exposed Grid	G
Concealed T	G
Slot Grid	G
Flange	G***



Manufactured by:



Model	Watts	CTT	Lumens	CRI	Size	PF	Lens
-------	-------	-----	--------	-----	------	----	------

GAI-04-TR-2x4-42W-L	42	3000K, 3500K, 4000K	4612	>80	27.6"x23.8"x3.3"	>0.9	Diffused
---------------------	----	---------------------	------	-----	------------------	------	----------



LED 2x4 TROFFER PANEL

LED 2x4 TROFFER PANEL SERIES has been designed for all commercial and industrial building requiring general illumination with recessed configurations. The troffer series is more energy saving and longer lifespan compared to T5/T8 lighting system. High performance and high transparency diffuser provides white translucent inlay for visual comfort, more light and a fresh look.

FEATURES

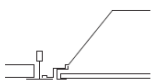
- Die formed of 24 gauge cold-rolled steel body
- High reflectance baked white acrylic matte paint finish
- Smooth edges for easy handling
- High reflectance white interior reflector
- Easy relamping and maintenance
- Fully recessed luminaire fits standard T-Grid ceilings
- Luminous efficiency 116 Lm/W
- High Power Factor > 0.9
- Standard lifetime 50,000 hours
- High CRI > 80
- Working temperature: -4°F~+122°F, IP 65
- Input power: 100 - 277VAC



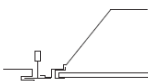
5 Years Warranty

INSTALLATION

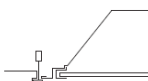
G
Grid / Lay-in
Standard



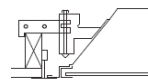
G
Concealed T



G
Slot Grid



F
Flange Trim
With Supporting
Swing Gates



* Standard G (Grid) Type Fixtures can be field converted by adding trim kits.

*** When ordering Flange Kit for installation in drywall ceilings, see options and accessories compatibility section and ordering logic.

Ceiling Type	Trim Type
Exposed Grid	G
Concealed T	G
Slot Grid	G
Flange	G***



Manufactured by:



Model	Watts	CTT	Lumens	CRI	Size	PF	Lens
GAI-04-TP-2x4-45W-L	45	3000K, 3500K, 4000K	5168	>80	48"x23.8"x3.3"	>0.9	Diffused
GAI-04-TP-2x4-55W-H	55	3000K, 3500K, 4000K	6273				



LED 2x2 PANEL

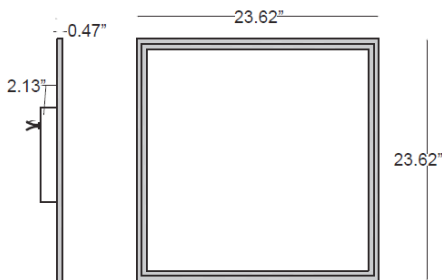
LED 2x2 PANEL SERIES has been designed for indoor environments, damp locations, hotels, retails, conference rooms, hospitals. It delivers high lumens of exceptional CRI + 80. It is a perfect solution for new construction or retrofitting existing fluorescent troffer fixtures. Its clean design allows it to be installed in different applications.

FEATURES

- Diffused lens gives an evenly illuminated appearance
- Luminous efficiency 89.41 Lm/W
- Professional thermal design
- Special processing for surface
- Elegant and superior appearance
- Contains no lead, glass or mercury
- High Power Factor > 0.9
- Standard lifetime 50,000 hours
- High CRI > 80
- Aluminum base and housing
- Working temperature: -4°F~+122°F, IP 65
- Input power: 100 - 277VAC



5 Years Warranty



Manufactured by:



Model	Watts	CTT	Lumens	CRI	Size	PF	Lens
GAI-07-P-2x2-40W-X	40	3500K, 4000K	3366	>80	23.62"x23.62"	>0.9	Diffused



LED 2x4 PANEL

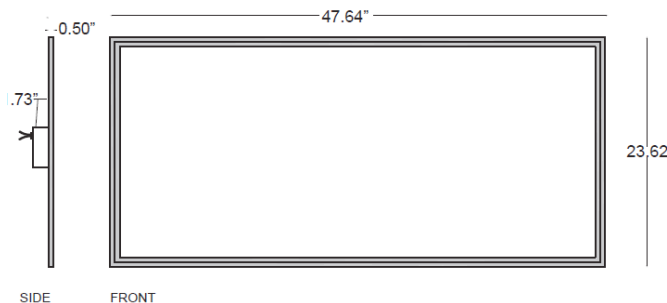
LED 2x4 PANEL SERIES has been designed for indoor environments, damp locations, hotels, retails, conference rooms, hospitals. It delivers high lumens of exceptional CRI + 80. It is a perfect solution for new construction or retrofitting existing fluorescent troffer fixtures. Its clean design allows it to be installed in different applications.

FEATURES

- Diffused lens gives an evenly illuminated appearance
- Luminous efficiency 95.57 Lm/W
- Professional thermal design
- Special processing for surface
- Elegant and superior appearance
- Contains no lead, glass or mercury
- High Power Factor > 0.9
- Standard lifetime 50,000 hours
- High CRI > 80
- Aluminum base and housing
- Working temperature: -4°F~+122°F, IP 65
- Input power: 100 - 277VAC



5 Years Warranty



Manufactured by:



Model	Watts	CTT	Lumens	CRI	Size	PF	Lens
GAI-07-P-2x4-50W-X	50	3500K	4571	>80	47.64"x23.62"	>0.9	Diffused



LED 2x2 TROFFER PANEL

LED 2x2 TROFFER PANEL SERIES is a recessed direct/indirect LED fixture, more energy saving, longer lifespan, and a better CRI compare to the T5/T8 tubes lighting system. This LED fixture is ideal for retails, conference rooms, hotels, offices, school facilities and hospitals. High performance and high transparency diffuser provides white translucent inlay for visual comfort, more light and a fresh look.

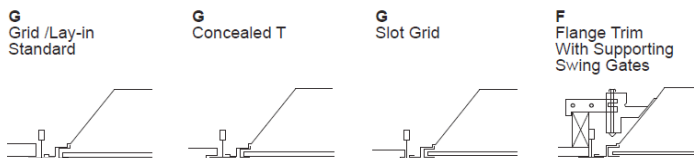
FEATURES

- Die formed of 24 gauge cold-rolled steel body
- High reflectance baked white acrylic matte paint finish
- High reflectance white interior reflector
- Fully recessed luminaire fits standard T-Grid ceilings
- Efficiency
- High Power Factor > 0.9
- Standard lifetime 50,000 hours
- High CRI > 80
- Aluminum base and housing
- Working temperature: -4°F~+122°F, IP 65
- Input power: 100 - 277VAC



5 Years Warranty

INSTALLATION



* Standard G (Grid) Type Fixtures can be field converted by adding trim kits.

*** When ordering Flange Kit for installation in drywall ceilings, see options and accessories compatibility section and ordering logic.

Ceiling Type	Trim Type
Exposed Grid	G
Concealed T	G
Slot Grid	G
Flange	G***



Manufactured by:



Model	Watts	CTT	Lumens	CRI	Size	PF	Lens
GAI-05-T-2x2-27W-D	27	4000K	2810	>83.9	23.7"x23.7"	>0.9	Diffused
GAI-05-T-2x2-40W-D	40	4000K	4560	>83.8			

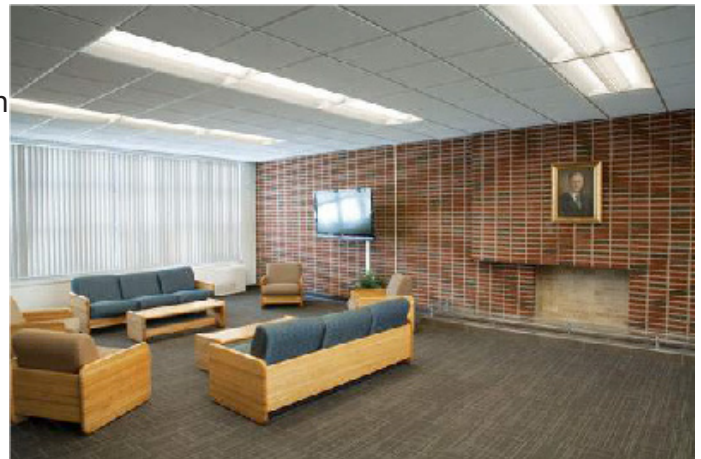


LED 2x4 TROFFER PANEL

LED 2x4 TROFFER PANEL SERIES is a recessed direct/indirect LED fixture, more energy saving, longer lifespan, and a better CRI compare to the T5/T8 tubes lighting system. This LED fixture is ideal for retails, conference rooms, hotels, offices, school facilities and hospitals. High performance and high transparency diffuser provides white translucent inlay for visual comfort, more light and a fresh look.

FEATURES

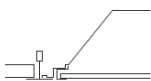
- Die formed of 24 gauge cold-rolled steel body
- High reflectance baked white acrylic matte paint finish
- High reflectance white interior reflector
- Easy relamping and maintenance
- Fully recessed luminaire fits standard T-Grid ceilings
- Efficiency 106.28 Lm/W (40W) 108.58 Lm/W (65W)
- High Power Factor > 0.9
- Standard lifetime 50,000 hours
- High CRI > 80
- Working temperature: -4°F~+122°F, IP 65
- Input power: 100 - 277VAC



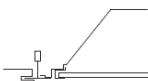
5 Years Warranty

INSTALLATION

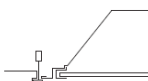
G
Grid / Lay-in
Standard



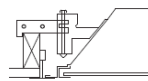
G
Concealed T



G
Slot Grid



F
Flange Trim
With Supporting
Swing Gates



* Standard G (Grid) Type Fixtures can be field converted by adding trim kits.

*** When ordering Flange Kit for installation in drywall ceilings, see options and accessories compatibility section and ordering logic.

Ceiling Type	Trim Type
Exposed Grid	G
Concealed T	G
Slot Grid	G
Flange	G***



Manufactured by:



Model	Watts	CTT	Lumens	CRI	Size	PF	Lens
GAI-05-T-2x4-40W-D	40	4000K	4235	>83.9	48"x23.8"	>0.9	Diffused
GAI-05-T-2x4-65W-D	65	4000K	7010	>84			



LED SHOE BOX AREA LIGHT

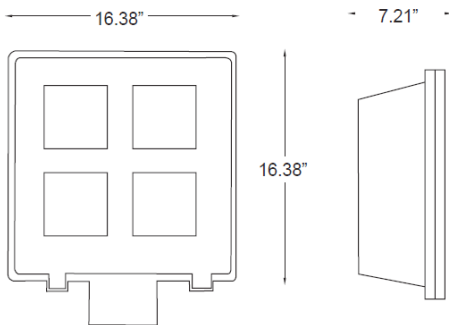
LED SHOE BOX AREA LIGHT SERIES is efficient, energy saving replacement for metal halide and high-pressure sodium fixture, containing an universal voltage driver.

FEATURES

- Using Aluminum fins heat sinks design, it's good for lamp heat dissipation and ensure LED's long lifetime
- Green, energy saving, long and reliable life of 50,000 hours
- Environment friendly, energy saving 80%
- Popular, ballast free, easy installation
- Beam Angle 140°
- Efficacy: 83 Lm/W (100W) 91 Lm/W (120W)
- Power Factor > 0.9
- CRI: 72
- Working temperature: - 4° F ~ 122° F



5 Years Warranty



Manufactured by:



Model	Watts	CTT	Lumens	CRI	Size AxBxC	PF	Cover
GAI-02-LED-SBOX-X-100W	100	4500K	8000	82	16.38"x16.38"x7.21"	>0.9	Clear
GAI-02-LED-SBOX-X-120W	120	4500K, 5500K	10800	82			



LED CANOPY LIGHT

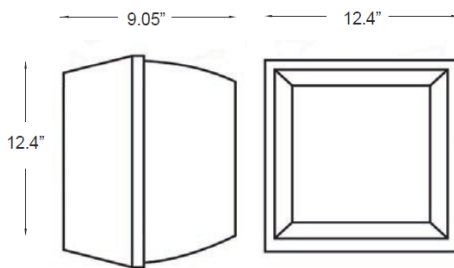
LED CANOPY LIGHT SERIES is useful for applications requiring a higher concentration of light. Such applications can include laboratories, basements, workshops, garages and storage facilities - any place where the ceilings are low but require bright illumination.

FEATURES

- Shell material: Aluminum and PC
- Green, energy saving, long and reliable life of 50,000 hours
- Environment friendly, energy saving 80%
- Prismatic Acrylic Refractor/Lens
- Beam Angle 180°
- Efficacy: 83 Lm/W (100W) 91 Lm/W (120W)
- Power Factor > 0.9
- CRI > 80
- Working temperature: - 4° F ~ 122° F
- 100-277V Rated Voltage



5 Years Warranty



Manufactured by:



Model	Watts	CTT	Lumens	CRI	Size AxBxC	PF	Cover
GAI-02-LB-BOX-X-60W-X*	60	4000K, 4500K 5000K, 5700K	4700	>80	9.05"x12.4"x12.4"	>0.9	Prismatic
GAI-02-LB-BOX-X-40W-X	40	4000K, 4500K 5000K, 5700K	3500				

* Also available 120VAC only (4500K)



LED ROUNDED CANOPY LIGHT

LED CANOPY LIGHT SERIES is useful for applications requiring a higher concentration of light. such applications can include laboratories, basements, workshops, garages and storage facilities - any place where the ceilings are low but require bright illumination.

FEATURES

- Shell material: Aluminum and PC
- Green, energy saving, long and reliable life of 50,000 hours
- Environment friendly, energy saving 80%
- Prismatic Acrylic Refractor/Lens
- Beam Angle 180°
- Efficacy: 93 Lm/W (30W), 87.5 Lm/W (40W), 86 Lm/W (50W), 78 Lm/W (60W)
- Power Factor > 0.9
- CRI > 80
- Working temperature: - 4° F ~ 122° F
- 100-277V Rated Voltage
- 100-277V Rated Voltage



5 Years Warranty



Manufactured by:



Model	Watts	CTT	Lumens	CRI	Size	PF	Cover
GAI-02-LB-CANO-X-30W-X	30	4500K, 5500K	2800				
GAI-02-LB-CANO-X-40W-X	40	4500K, 5500K	3500	>80	14.5"x11.4"	>0.9	Prismatic
GAI-02-LB-CANO-X-50W-X	50	4500K, 5500K	4300				
GAI-02-LB-CANO-X-60W-X	60	4500K, 5500K	4700				



LED WALLPACK LIGHT

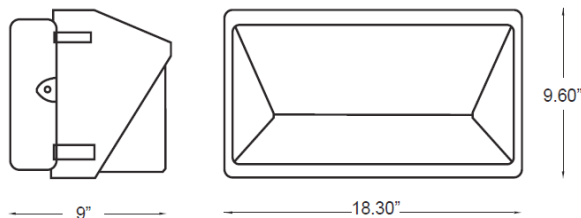
LED WALLPACK LIGHT SERIES is used to illuminate a variety of areas such as: lighting building facades, parking areas, garages, loading areas and any other space requiring reliable safety and security. High lumen output, energy-efficient optical control and easy universal installation.

FEATURES

- Shell material: Aluminum and PC
- Green, energy saving, long and reliable life of 50,000 hours
- Environment friendly, energy saving 70 - 80%
- Prismatic Acrylic Refractor/Lens
- Beam Angle 120°
- Efficacy: 93 Lm/W (30W), 78.6 Lm/W (60W), 74 Lm/W (80W), 75 Lm/W (100W)
- Power Factor > 0.9
- CRI > 80
- Working temperature: - 4° F
- 100-277V Rated Voltage
- Working temperature: - 4° F ~ 122° F
- 120-277V Rated Voltage



5 Years Warranty



Manufactured by:



* Available only 120VAC

Model	Watts	CTT	Lumens	CRI	Size	PF	Cover
GAI-02-OWL-PAC-X-30W-X*	30	4500K, 5500K	2800				
GAI-02-OWL-PAC-X-60W-X	60	4500K, 5500K	4716	>80	18.3"x9.60"x9"	>0.9	Prismatic
GAI-02-OWL-PAC-X-80W-X	80	4500K, 5500K	5920				
GAI-02-OWL-PAC-X-100W-X	100	4500K, 5500K	7500				



LED FLOOD-A LIGHT

LED FLOOD LIGHT are high-intensity lights used to illuminate outdoor areas. You can position your flood lights to provide added security and light where needed. They are often used to illuminate outdoor playing fields while an outdoor sports event is being held during low-light conditions. Equipped with the 3030 SMD LED, UL listed Meanwell Power Supply, Aluminum die-casting heat sinks, it easily outperforms conventional fixtures.

FEATURES

- Aluminum fins heat sinks is good for heat dissipation.
- It's major to replace traditional flood lighting.
- Green, energy saving, long and reliable life of 50,000 hours.
- No RF interference, No IR/UV radiation, no mercury pollution.
- Wide colour availability in degrees Kelvin(K), 2700-6700K.
- Environment friendly, energy saving (70~80%).
- Streamline exterior design, beautiful appearance.
- Special circuit design, each LED work separately, avoiding the single broken LED influence problem.

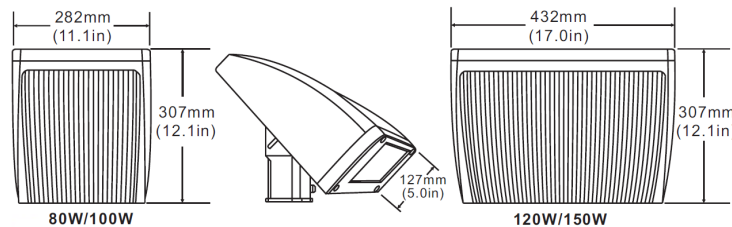


5 Years Warranty



APPLICATION

- Large areas lighting.
- Building facades lighting.
- Multiple applications.



Manufactured by:



Model	Watts	CTT	Lumens	CRI	Size	PF	Cover
GAI-02-FL-80W-A-X	80	2700K - 3500K (WW)	5958	71.1	266x127x280 mm	>0.95	Transparent
GAI-02-FL-100W-A-X	100	4000K - 5000K (NW)	6855	76.3			
GAI-02-FL-120W-A-X	120	5500K - 6000K (CW)	9905	74.7			
GAI-02-FL-150W-A-X	150		13182	73.0			



LED AREA-B LIGHT

LED AREA LIGHTING provides excellent illuminative solutions to parking areas, airports, roadways, campuses and streetscapes. LED Area Light provides glare free, uniform illumination while providing a safe and comfortable visual experience. Equipped with the 3030 SMD LED, UL listed Meanwell Power Supply, Aluminum die-casting heat sinks, it easily outperforms conventional fixtures.

FEATURES

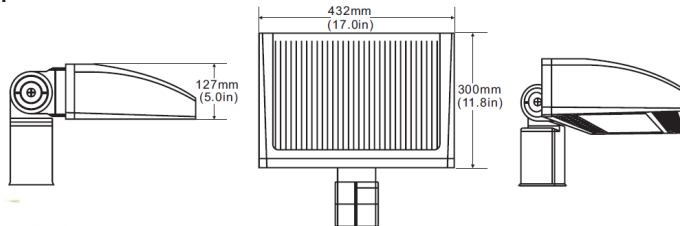
- Aluminum fins heat sinks is good for heat dissipation.
- It's major to replace traditional area lighting. Green, energy saving, long and reliable life of 50,000 hours.
- No RF interference, No IR/UV radiation, no mercury pollution.
- Wide colour availability in degrees Kelvin(K), 2700-6700K.
- Environment friendly ,energy saving (70~80%).
- Streamline exterior design, beautiful appearance.
- Special circuit design, each LED work separately, avoiding the single broken LED influence problem.



5 Years Warranty

APPLICATION

- Energy saving up to 70%-80%.
- Multiple applications.
- Environmentally friendly.
- Integrated die casting pure aluminum radiator.
- Landscapes lighting.



Manufactured by:



Model	Watts	CTT	Lumens	CRI	Size	PF	Cover
GAI-02-FL-80W-B-X	80	2700K - 3500K (WW)	9956	70.7	12.20"x5.0 "x17.07 "	>0.95	Transparent
GAI-02-FL-100W-B-X	100	4000K - 5000K (NW)	11299	71.4			
GAI-02-FL-120W-B-X	120	5500K - 6000K (CW)	13656	71.8			
GAI-02-FL-150W-B-X	150		16747	72.5			



LED FLOOD-C LIGHT

LED Flood light are high-intensity lights used to illuminate outdoor areas. You can position your flood lights to provide added security and light where needed. They are often used to illuminate outdoor playing fields while an outdoor sports event is being held during low-light conditions. Equipped with the 3030 SMD LED, UL listed Meanwell Power Supply, Aluminum die-casting heat sinks, it easily outperforms conventional fixtures.

FEATURES

- Aluminum fins heat sinks is good for heat dissipation.
- It's major to replace traditional flood lighting.
- Green, energy saving, long and reliable life of 50,000 hours.
- No RF interference, No IR/UV radiation, no mercury pollution.
- Wide colour availability in degrees Kelvin(K), 2700-6700K.
- Environment friendly, energy saving (70~80%).
- Streamline exterior design, beautiful appearance.
- Special circuit design, each LED work separately, avoiding the single broken LED influence problem.

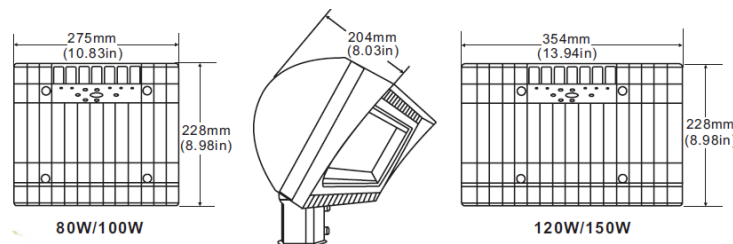


5 Years Warranty



APPLICATIONS

- Large areas lighting.
- Building facades lighting.
- Signs lighting.
- Landscapes lighting.



Manufactured by:



Model	Watts	CTT	Lumens	CRI	Size	PF	Cover
GAI-02-FL-80W-C-X	80	2700K - 3500K (WW)	9328	70.7	8.93"x7.28"x10.74"	>0.95	Transparent
GAI-02-FL-100W-C-X	100	4000K - 5000K (NW)	10407	71.0			
GAI-02-FL-120W-C-X	120	5500K - 6000K (CW)	13240	71.0			
GAI-02-FL-150W-C-X	150		15586	72.4			



LED CIRCULAR AREA LIGHTS

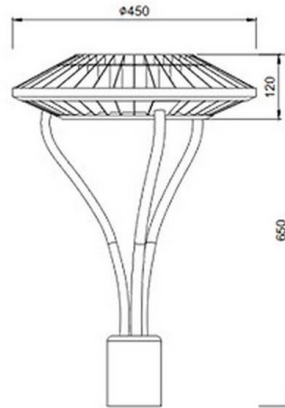
LED CIRCULAR AREA LIGHTS provides glare free, uniform illumination while providing a safe and comfortable visual experience. Equipped with the 3030 SMD LED, Aluminum die-casting heat sinks, it easily outperforms conventional fixtures.

FEATURES

- Die cast aluminum house, excellent thermal control
- Voltages: 100-277Vac
- Dimmable: 1-10VDC/PWM/Resistor (3 IN 1)
- CRI: 70+
- IP65
- Operating Temp: -30 °C to +50 °C
- Operating Humidity: 20% to 90%RH
- Power Fact(PF): 0.986
- Power Supply Efficiency: > 90%
- Light from the top
- Mounting made simple
- Design air-flow fins that drive air through the fixture using convection to achieve maximum heat dissipation
- It's major to replace traditional area lighting
- Streamline exterior design, beautiful appearance
- Application in Area roadway/lighting, Parking areas lighting, airports lighting, streetscapes lighting, Campuses lighting



5 Years Warranty



Manufactured by:



Model	Watts	CTT	Lumens	CRI	Beam	Size	PF	Cover
GAI-02-LD-100W-AR-X	100	3000K, 4000K	115	>70	80°	17.71"x17.7"x25.59"	>0.95	Frosted
GAI-02-LD-180W-AR-X	180	5000K, 5700K	105					



LED LINEAR HIGH BAY

LED LINEAR HIGH BAY is the superior replacement for traditional High bay luminaires such as HID, Fluorescent systems, LED LINEAR HIGH BAY can dramatically save 50% power consumptions. Precision-designed optics, multiple distributions, and a choice of lumen outputs and color temperatures make the energy-efficient LED HIGH BAY the ideal solution for industrial, commercial and other high bay applications.

FEATURES

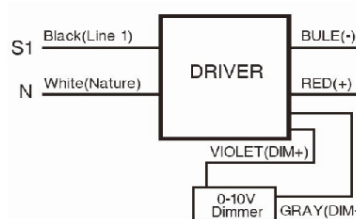
- Chip: LG 5730 G4
- CRI: Ra>80
- CCT Options: 4000K, 5000K, 5700K
- The HB is powered with standard a 0-10V continuous dimming driver ranging from 10%-100% that works with 0-10V control/dimmer. The driver efficiency up to 85%.
- PF:>0.9
- Segregated driver chamber ensures steady performance and long lifetime
- Working Ambient Temperature: -20°C 55°C
- Standard Lifetime: Designed minimum 50,000
- Mounting: Surface Mounting
- Standard Warranty: 5 Years
- 110W can replace 4 lamps T5HO
- 155W can replace 6 lamps T5HO
- 220W can replace 8 lamps T5HO



5 Years Warranty



Wiring Diagram



V-Clips

Manufactured by:



Model	Watts	CTT	Lumens	CRI	Size	PF
GAI-04-HB-2FT-110W-XX	110		13006		23.8"x12.6"x3.62"	
GAI-04-HB-2FT-155W-XX	155	4000K, 5000K, 5700K	19382	>80	23.8"x17.3"x3.62"	>0.9
GAI-04-HB-4FT-220W-XX	220		25960		45.9"x12.6"x3.62"	



LED LINEAR HIGH BAY LIGHT

LED LINEAR HIGH BAY LIGHT SERIES is an excellent industrial and architectural light source for task lighting and illuminating areas with medium to ceiling height. It is extremely efficient LED luminaire replacing fluorescent system in retail and industrial applications accomodates an integral wireguard or high transparency doorframe/diffuser to provide even light output.

FEATURES

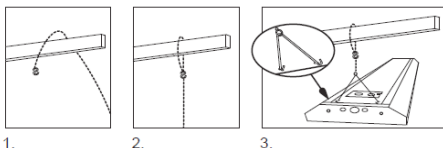
- Die formed of 22 gauge galvanised steel, rigidly fabricated louver aperture on the top of housing for heat dissipation. Modules are attached to high reflectance specular panel gear tray can be fast opened for replacing drivers
- All steel surfaces are painted after fabrication with high gloss baked white enamel, applied over iron phosphate pre-treatment for maximum adhesion and rust esistance
- Designed for pendant or chain mounting, adjustablecable
- 6pcs, 8pcs, 12pcs, 2 ft long LED modules
- Efficacy:73 Lm/W (150W) 83 Lm/W (200W)
- Power Factor > 0.9



5 Years Warranty



INSTALLATION



1. Thread the cable into Grippler Express and pull cable trough.
2. Loop around the ceiling or the service attachment point, pass the tail end of the cable to the desired length or service height.
3. Use the desired holes to mount the fixture. Remove the v-hook if you intend to mount the inner pair of the mounting holes.

Manufactured by:



Model	Watts	CTT	Lumens	CRI	Size	PF	Cover
GAI-04-HB-48x10-104W-X	104	3000K, 3500K	12615	>80	48"x10"x4.2"	>0.9	Frame
GAI-04-HB-48x10-4-140W-X	140	4000K, 5000K	16625				Diffuse



LED HIGH BAY LIGHT

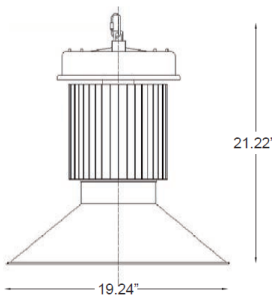
LED HIGH BAY LIGHT SERIES is widely used in indoor or half indoor lighting, like mechanical or electronic processing workshops, storage warehouses, steel mills, gas stations, toll booths, waiting rooms, indoor stadiums, and flower cultivating tents, etc.

FEATURES

- CREE second generation XML-B LED, high luminous efficiency and long life
- Meanwell High Efficiency LED Driver, 90-305 VAC
- Excellent lampshade design, greatly improve the light utilization and evenness
- The hook card embedded installation, easy to install, safety and firm
- Shell material: Heat pipe and cooling fins aluminum alloy
- Beam Angle 90°
- Efficacy: 73 Lm/W (150W) 83 Lm/W (200W)
- Power Factor > 0.9
- CRI > 70
- Working temperature: - 4° F ~ 122° F
- 100-277V Rated Voltage



5 Years Warranty



Manufactured by:



Model	Watts	CTT	Lumens	CRI	Size	PF	Diffuser
GAI-03-HB-X-X-150W	150	5000K	11000	73	19.4"x21.22"	>0.9	NA
GAI-03-HB-X-X-200W	200	5500K	16600	73			



LED LOW BAY LIGHT

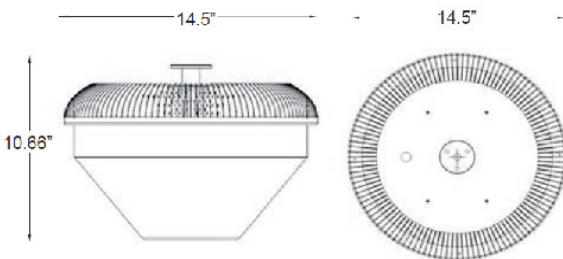
LED LOW BAY LIGHT SERIES is useful for applications requiring a higher concentration of light. such applications can include laboratories, basements, workshops, garages and storage facilities any place where the ceilings are low but require bright illumination.

FEATURES

- Shell material: 1070 Aluminum & PC
- Green, energy saving, long and reliable life of 50,000 hours
- Meanwell High Efficiency LED Driver
- Prismatic Acrylic Refractor/Lens
- Available 0 - 10V dimmability
- Surface mounting
- Beam Angle 140°
- Efficacy: 85 Lm/W (60W) 91 Lm/W (90W)
- Power Factor > 0.9
- CRI > 80
- Working temperature: - 4° F ~ 122° F
- 100-277V Rated Voltage



5 Years Warranty



Manufactured by:



Model	Watts	CTT	Lumens	CRI	Size	PF	Diffuser
GAI-02-LB-X-X-60W-X	60	4000K, 5000K	5100	>80	14.5"x10.66"	>0.9	Prismatic
GAI-02-LB-X-X-90W-X	90	4000K, 5000K	8200				



LED WALLPACK LIGHT

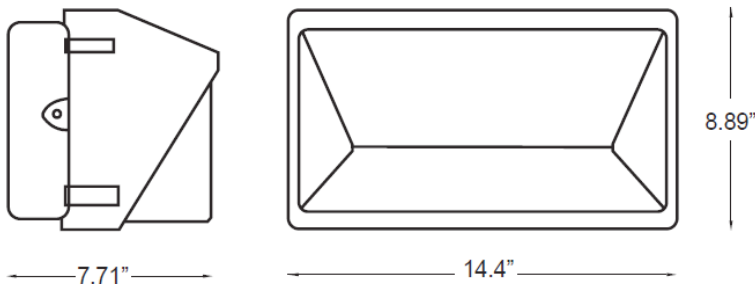
LED WALLPACK LIGHT SERIES is used to illuminate a variety of areas such as: lighting building facades, parking areas, garages, loading areas and any other space requiring reliable safety and security. High lumen output, energy-efficient optical control and easy universal installation.

FEATURES

- Shell material: Aluminum and PC
- Green, energy saving, long and reliable life of 50,000 hours
- Environment friendly, energy saving 70 - 80%
- Prismatic Acrylic Refractor/Lens
- Beam Angle 90°
- Efficacy: 83 Lm/W
- Power Factor > 0.9
- CRI > 80
- Working temperature: - 4° F ~ 122° F
- 120-277V Rated Voltage



5 Years Warranty



Manufactured by:



Model	Watts	CTT	Lumens	CRI	Size	PF	Cover
GAI-03-WP-X-X-100W-X	100	4000K, 5000K	8300	>80	14.4"x8.89"x7.71"	>0.9	Prismatic



LED GARDEN LIGHT

LED GARDEN LIGHT SERIES is efficient, energy saving replacement for metal halide and high-pressure sodium fixtures, containing an universal voltage driver. It is suitable for squares, parks, gardens and other internal roads.

FEATURES

- Replaces up to 175W pulse start metal halide
- 50,000 Hour Lifespan (L70)
- Heavy duty cast aluminum housing is polyester powder coated and sealed from dirt
- Silicone sealed for a high dustproof and waterproof performance
- Dark finish
- Power Efficiency: >88%
- Aluminum alloy lamp housing
- Constructed without any hazardous materials
- Efficacy: 89.55 Lm/W
- Power Factor > 0.9
- CRI: 70.5
- Working temperature: - 4° F ~ 122° F
- 100-240V Rated Voltage



5 Years Warranty



Manufactured by:



Model	Watts	CTT	Lumens	CRI	Size	PF	Diffuser
GAI-16-GL-02-X-30W	30	5000K	2700	70.5	17.7"x23.81"	>0.9	Frosted

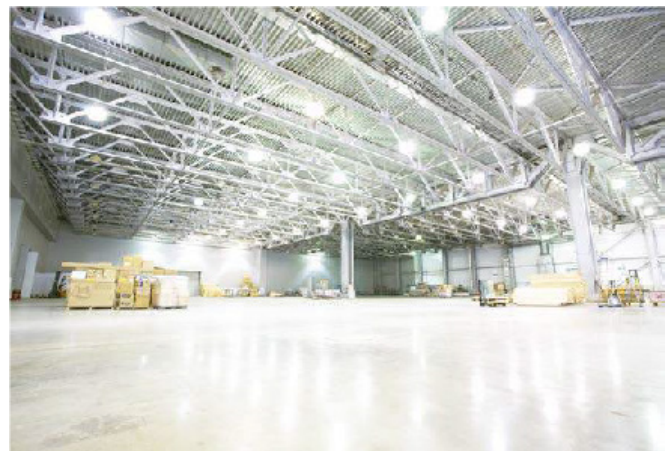


LED HIGH BAY INDUSTRIAL LIGHT

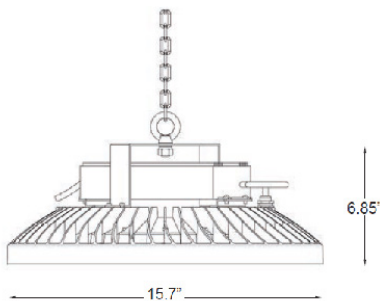
LED HIGH BAY INDUSTRIAL LIGHT SERIES is widely used in indoor or half indoor lighting, like mechanical or electronic processing workshops, storage warehouses, steel mills, gas stations, toll booths, waiting rooms, indoor stadiums, and flower cultivating tents, etc.

FEATURES

- Shell material: Magnesium alloy
- Green, energy saving, long and reliable life of 50,000 hours
- Light source: SMD LED
- Pendant mounting
- Clear and frosted lens available
- Beam Angle 110°
- Efficacy: 95 Lm/W
- Power Factor > 0.9
- CRI > 82
- Working temperature: - 4° F ~ 122° F
- 120-277V Rated Voltage



5 Years Warranty



Manufactured by:



Model	Watts	CTT	Lumens	CRI	Size	PF	Diffuser
GAI-15-HB-X-X-200W	200	5000K	19000	>82	6.85"x15.7"	>0.9	Frosted, Clear



LED DUAL SENSOR BI-LEVEL FIXTURE

LED DUAL SENSOR BI-LEVEL FIXTURE SERIES is a unique luminaire suitable for ceiling or wall mounting. Ideal for stairwells, restrooms, laundry rooms.

FEATURES

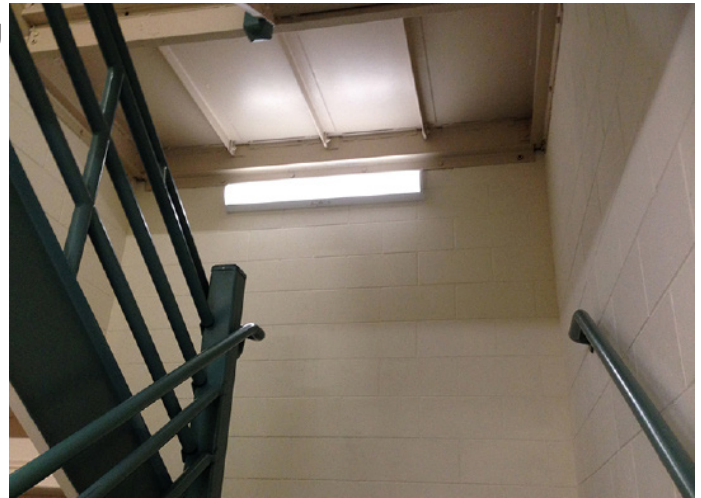
- Infrared motion sensor designed to provide safe, dependable illumination while conserving energy
- Bi-level fixtures operate at 20% standby light level offering safety and security with full light output instantly upon occupancy with areas fully lit only as needed
- All electrical components are UL listed

SENSOR

- High sensitive infrared sensors, 140° angle
- 360° 26' detection zone
- Motion sensor range may be set to 20', 30' or 40' using optional remote control
- Time delay adjustable to 1,5 or 15 minutes using optional remote control

OPTIONS

- Universal 120 - 277V
- 20% standby light level
- Power coated white finish
- Frosted acrylic diffuser
- Emergency pack available minimum 90 min illumination during power outages



5 Years Warranty



Manufactured by:



Model	Watts	CTT	Lumens	CRI	Size	PF	Diffuser
GAI-11-DS-48-4-23.5W-X	23.5	5000K	119.14	>82	50.37"x3.43"	>0.9	Frosted



LED BI-LEVEL FIXTURE

LED BI-LEVEL FIXTURE SERIES is a unique luminaire suitable for ceiling or wall mounting. Ideal for stairwells, restrooms, laundry rooms.

FEATURES

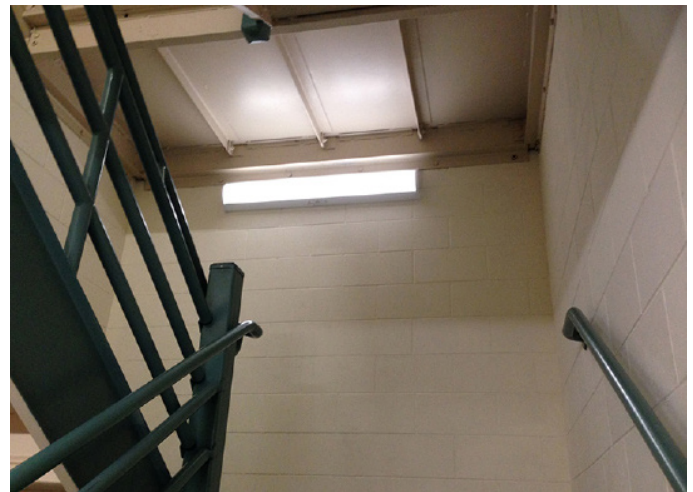
- Ultra sonic motion sensor designed to provide safe, dependable illumination while conserving energy
- Bi-level fixtures operate at a low standby light level offering safety and security with full light output instantly upon occupancy with areas fully lit only as needed
- All electrical components are UL listed

SENSOR

- High frequency, sensitive ultra sonic, internally mounted
- LED status indicator
- Fail-safe feature switches light level to high (100%) if sensor is physically damaged
- 5 minutes walk-test feature easy-set time and sensitivity controls
- Time delay adjustable to 5, 10, 15 or 30 minutes

OPTIONS

- Universal 120-277V
- AS User selectable stand by options 5, 10 & 30%
- Nominal Light Output
- Low, Medium Power
- FA Frosted acrylic diffuser
- Emergency Pack
- Power: Low (L), Medium (M)



5 Years Warranty



Type	Standby Options AS
24"	3W/4W/5W (L) 4W/5W/8W (M)
48"	6W/8W/10W (L) 8W/10W/16W (M)

** AS shown as 5%,10% and 30% dim

Manufactured by:



Model	Watts	CTT	Lumens	CRI	Size	PF	Diffuser
GAI-11-VO-23.5-2-X-X	15(L) 23.5(M)	4000K	1356(L) 2127(M)	>82	24"x8"	>0.9	Frosted
GAI-11-VO-48-4-X-X	24.5(L) 43(M)	4000K	2615(L) 4182(M)	>82	48"x8"	>0.9	Frosted



LED 6" COMMERCIAL DOWNLIGHT RETROFIT

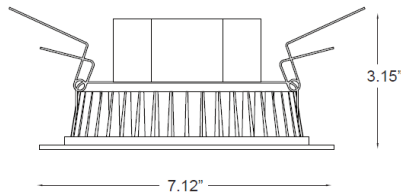
LED 6" LED COMMERCIAL DOWNLIGHT SERIES has been designed and engineered for commercial application, retrofitting existing recessed 6" can housing as well as new construction application. It has a CRI > 80 with high system efficiency. It is suitable for offices, retails, hospitals and hotels.

FEATURES

- Unique combination of reflective and refractive optical components
- Comfortable diffused light
- Beam Angle: 30°
- Fire-rated junction box
- Efficacy: 95 Lm/W (14W) 90.4 Lm/W (18W)
- Not Dimmable
- High Power Factor > 0.9
- Standard lifetime 35,000 hours
- High CRI > 80
- Working temperature: -4°F~+122°F
- Input Voltage 277VAC
- Working temperature: - 4° F ~ 122° F
- 100-277V Rated Voltage



5 Years Warranty



Manufactured by:



Model	Watts	CTT	Lumens	CRI	Size	PF	Lens
GAIC6-14W-XXX-277	14	3000K, 3500K, 4000K, 5000K	1330	>80	7.12"x3.15"	>0.9	Diffuse
GAI-05-CD-C6-X-18W	18	3000K, 4000K, 5000K	1628				



LED 6" COMMERCIAL DOWNLIGHT

LED 6" LED COMMERCIAL DOWNLIGHT SERIES has been designed and engineered for commercial application, retrofitting existing recessed 6" can housing as well as new construction application. It has a CRI > 80 with high system efficiency. It is suitable for offices, retails, hospitals, hotels, schools, warehouses and factories.

FEATURES

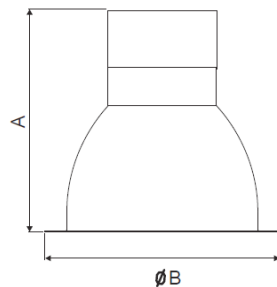
- Superior quality white LED light
- Driver efficiency > 85%
- Aluminum heat sink
- Comfortable diffused light
- High thermal conductivity
- Efficacy > 75 Lm/W
- Dimmable
- High Power Factor > 0.9
- Standard lifetime 50,000 hours
- High CRI > 80
- Working temperature: -4°F~+122°F
- Input Voltage 100-277VAC



OPTIONS

- TRIM - white or other color
- Reflector - Specular or Matte diffuse
- Diffuser - Frosted or Opal

5 Years Warranty



Manufactured by:



Model	Watts	CTT	Lumens	CRI	Size	PF	Cover
GAI-04-RD-6-20W-X	20	2700K, 3000K, 3500K, 4000K	1500	>80	(A)7.68"x(B)7.48"		
GAI-04-RD-6-29W-X	29	2700K, 3000K, 3500K, 4000K	2000	>80	(A)7.68"x(B)7.48"	>0.9	Frosted Opal
GAI-04-RD-6-34W-X	34	2700K, 3000K, 3500K, 4000K	2500	>80	(A)8.46"x(B)7.48"		
GAI-04-RD-6-40W-X	40	2700K, 3000K, 3500K, 4000K	3000	>80	(A)8.46"x(B)7.48"		

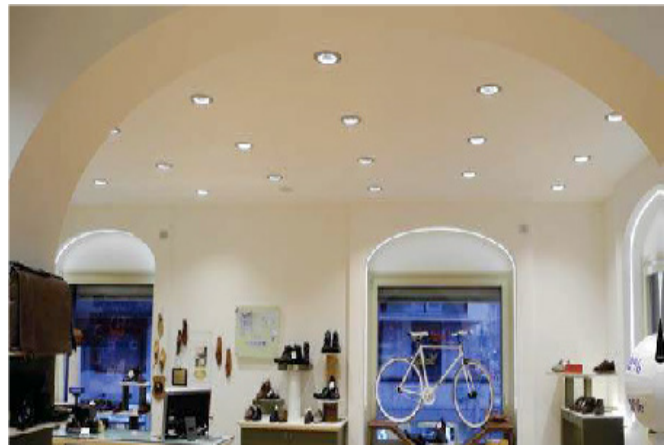


LED 8" COMMERCIAL DOWNLIGHT

LED 8" LED COMMERCIAL DOWNLIGHT SERIES has been designed and engineered for commercial application, retrofitting existing recessed 8" can housing as well as new construction application. It has a CRI > 80 with high system efficiency. It is suitable for offices, retails, hospitals, hotels, schools, warehouses and factories.

FEATURES

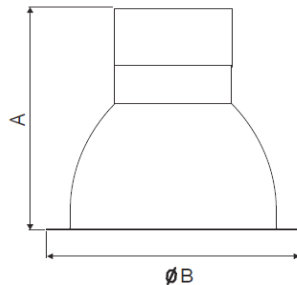
- Superior quality white LED light
- Driver efficiency > 85%
- Aluminum heat sink
- Comfortable diffused light
- High thermal conductivity
- Efficacy > 75 Lm/W
- Dimmable
- High Power Factor > 0.9
- Standard lifetime 50,000 hours
- High CRI > 80
- Working temperature: -4°F~+122°F
- Input Voltage 100-277VAC



OPTIONS

- TRIM - white or other color
- Reflector - Specular or Matte diffuse
- Diffuser - Frosted or Opal

5 Years Warranty



Manufactured by:



Model	Watts	CTT	Lumens	CRI	Size	PF	Cover
GAI-04-RD-8-20W-X	20	2700K, 3000K, 3500K, 4000K	1500	>80	A)8.19"x(B)9.29"	>0.9	Frosted Opal
GAI-04-RD-8-29W-X	29	2700K, 3000K, 3500K, 4000K	2000	>80	(A)8.19"x(B)9.29"		
GAI-04-RD-8-34W-X	34	2700K, 3000K, 3500K, 4000K	2500	>80	(A)8.89"x(B)9.29"		
GAI-04-RD-8-40W-X	40	2700K, 3000K, 3500K, 4000K	3000	>80	(A)8.89"x(B)9.29"		
GAI-04-RD-8-42W-X	42	2700K, 3000K, 3500K, 4000K	3500	>80	(A)8.89"x(B)9.29"		



LED 10" COMMERCIAL DOWNLIGHT

LED 10" LED COMMERCIAL DOWNLIGHT SERIES has been designed and engineered for commercial application, retrofitting existing recessed 10" can housing as well as new construction application. It has a CRI > 80 with high system efficiency. It is suitable for offices, retails, hospitals, hotels, schools, warehouses and factories.

FEATURES

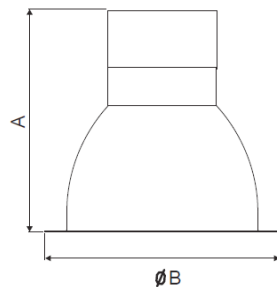
- Superior quality white LED light
- Driver efficiency > 85%
- Aluminum heat sink
- Comfortable diffused light
- High thermal conductivity
- Efficacy > 75 Lm/W
- Dimmable
- High Power Factor > 0.9
- Standard lifetime 50,000 hours
- High CRI > 80
- Working temperature: -4°F~+122°F
- Input Voltage 100-277VAC



OPTIONS

- TRIM - white or other color
- Reflector - Specular or Matte diffuse
- Diffuser - Frosted or Opal

5 Years Warranty



Manufactured by:



Model	Watts	CTT	Lumens	CRI	Size	PF	Cover
GAI-04-RD-10-34W-X	34	2700K, 3000K, 3500K, 4000K	2500	>80	(A)8.89"x(B)10.98"		
GAI-04-RD-10-40W-X	40	2700K, 3000K, 3500K, 4000K	3000	>80	(A)9.21"x(B)10.98"	>0.9	Frosted Opal
GAI-04-RD-10-42W-X	42	2700K, 3000K, 3500K, 4000K	3500	>80	(A)9.21"x(B)10.98"		
GAI-04-RD-10-50W-X	50	2700K, 3000K, 3500K, 4000K	4000	>80	(A)9.21"x(B)10.98"		

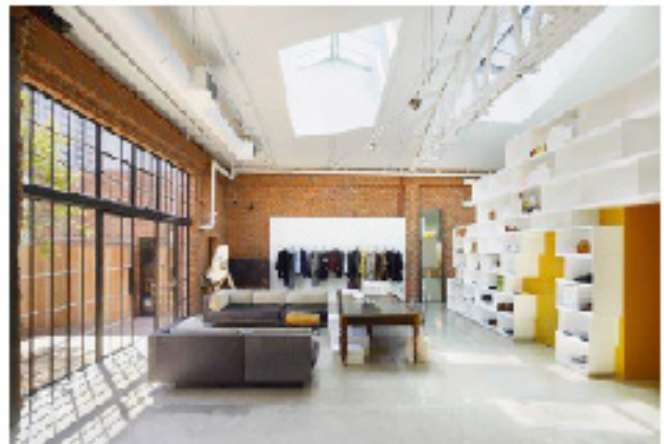


LED A 19 LAMP 6W

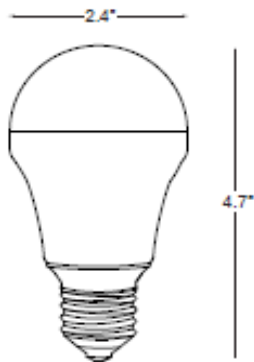
LED A19 LAMP SERIES is a dimmable LED A type lamp for table fixtures, floor fixtures, ceiling fixtures and decorative chandeliers.

FEATURES

- 120v/60Hz E26 base
- Replaces 40W incandescent
- Efficacy: 75 Lm/W
- Beam angle: 330°
- 25,000 Hour life (L70)
- CRI > 80
- Proprietary housing for thermo heat protection
- Damp location rated
- Color matched LEDs
- Dimmable down to 10%
- Operating temperature -4° to 113° F
- Saves up to 90% on energy and operating costs



5 Years Warranty



Manufactured by:



Model	Watts	CTT	Lumens	CRI	Size	PF	Base
GAI-10-LM-A19-E26-6W-X	6	2700K, 4000K, 5000K	450	>80	2.4"x4.7"	1.0	E26

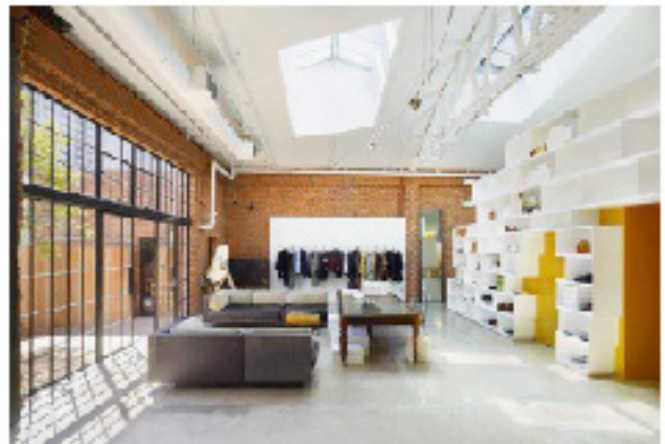


LED A 19 LAMP 8.5W

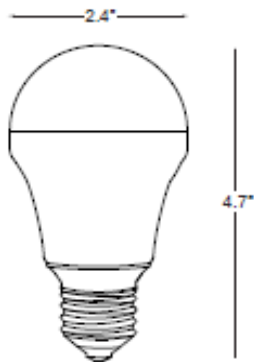
LED A19 LAMP SERIES is a dimmable LED A type lamp for table fixtures, floor fixtures, ceiling fixtures and decorative chandeliers.

FEATURES

- 120v/60Hz E26 base
- Replaces 60W incandescent
- Efficacy: 94 Lm/W
- Beam angle: 330°
- 25,000 Hour life (L70)
- CRI > 80
- Proprietary housing for thermo heat protection
- Damp location rated
- Color matched LEDs
- Dimmable down to 10%
- Operating temperature -4° to 113° F
- Saves up to 90% on energy and operating costs



5 Years Warranty



Manufactured by:



Model	Watts	CTT	Lumens	CRI	Size	PF	Base
GAI-10-LM-A19-E26-8.5W-X	8.5	2700K, 3000K, 4000K, 5000K	450	>80	2.4"x4.7"	1.0	E26



LED R 20 LAMP

LED R 20 SERIES has been designed for commercial applications, it is suitable for general, recessed and accent lighting. With a high efficacy and an evenly diffused beam spread, this lamp saves money without sacrificing light quality. At just 8W, this LED lamp replaces a 45W incandescent but lasts 40 times longer.

FEATURES

- 120v/60Hz E26 base
- Replaces 45W Incandescent
- Beam Angle: 120°
- Efficacy: 56 Lm/W
- No glare, anti-punch, anti-quake
- Suitable for fully enclosed applications
- Dimmable 10-100%
- High Power Factor: 1.0
- Standard lifetime 25,000 hours
- High CRI > 80
- Working temperature: -4°F~+122°F



5 Years Warranty



Manufactured by:



Model	Watts	CTT	Lumens	CRI	Size	PF	Base
GAI-10-LM-R20-E26-8W-X	8	2700K	450	>80	2.5"x3.66"	0.9	E26



LED BR 30 LAMP

LED BR 30 SERIES has been designed for commercial applications, it is suitable for general, recessed and accent lighting. With a high efficacy and an evenly diffused beam spread, this lamp saves money without sacrificing light quality. At just 12W, this LED lamp replaces a 65W incandescent but lasts 40 times longer.

FEATURES

- 120v/60Hz E26 base
- Replaces 65W Incandescent
- Beam Angle: 120°
- Efficacy: 62.5 Lm/W
- No glare, anti-punch, anti-quake
- Suitable for fully enclosed applications
- Dimmable 10-100%
- High Power Factor: 0.9
- Standard lifetime 25,000 hours
- High CRI > 80
- Working temperature: -4°F~+122°F



5 Years Warranty



Manufactured by:



Model	Watts	CTT	Lumens	CRI	Size	PF	Base
GAI-10-BR30-E26-12W-X	12	2700K	750	>80	3.7"x5.35	0.9	E26



LED BR 40 LAMP

LED BR 40 SERIES has been designed for commercial applications, it is suitable for general, recessed and accent lighting. With a high efficacy and an evenly diffused beam spread, this lamp saves money without sacrificing light quality. At just 17.5W, this LED lamp replaces a 85W incandescent but lasts 40 times longer.

FEATURES

- 120v/60Hz E26 base
- Replaces 85W Incandescent
- Beam Angle: 120°
- Efficacy: 63 Lm/W
- No glare, anti-punch, anti-quake
- Die-casting aluminum alloy housing for good heat dissipation
- Dimmable 10-100%
- High Power Factor: 0.9
- Standard lifetime 25,000 hours
- High CRI > 80
- Working temperature: -4°F~+122°F



5 Years Warranty



Manufactured by:



Model	Watts	CTT	Lumens	CRI	Size	PF	Base
GAI-10-LM-BR40-E26-17.5W-X	17.5	2700K	1100	>80	4.72"x6.18"	0.9	E26



LED PAR 20 LAMP

LED PAR 20 SERIES has been designed for commercial applications, it is suitable for track, recessed and security lighting. All PAR lamps feature passive cooling system which extends lifetime and lumen maintenance, as well as the lens which optimizes beam distribution and reduces glare. At just 7.5W, this LED lamp replaces a 50W halogen but lasts 40 times longer.

FEATURES

- 120v/60Hz E26 base
- Replaces 35W Halogen
- Beam Angle: 40°
- Efficacy: 53 Lm/W
- No glare, anti-punch, anti-quake
- Built-in current control driver
- Dimmable 5-100%
- High Power Factor: 0.9
- Standard lifetime 35,000 hours
- High CRI > 80
- Working temperature: -4°F~+122°F



5 Years Warranty



Manufactured by:



Model	Watts	CTT	Lumens	CRI	Size	PF	Base
GAI-10-LM-PR20-E26-7.5W-X	7.5	3000K	400	>80	3.46"x3.74"	0.9	E26



LED PAR 30 LAMP

LED PAR 30 SERIES has been designed for commercial applications, it is suitable for track, recessed and security lighting. All PAR lamps feature passive cooling system which extends lifetime and lumen maintenance, as well as the lens which optimizes beam distribution and reduces glare. At just 10.5W, this LED lamp replaces a 60/75W halogen but lasts 40 times longer.

FEATURES

- 120v/60Hz E26 base
- Replaces 60W Halogen - 75W Halogen (long neck)
- Beam Angle: 40°
- Efficacy: 57 Lm/W - 55.6 Lm/W (long neck)
- No glare, anti-punch, anti-quake
- Built-in current control driver
- Dimmable 5-100%
- High Power Factor: 0.9
- Standard lifetime 35,000 hours
- High CRI > 80
- Working temperature: -4°F~+122°F



5 Years Warranty



Manufactured by:



Model	Watts	CTT	Lumens	CRI	Size	PF	Base
GAI-10-LM-PR30-E26-10.5W	10.5	3000K, 5000K	600	>80	3.70"x3.54"	0.9	E26
GAI-10-LM-PR30-E26-13.5W-L LONG NECK	13.5	3000K	750	>80	3.70"x4.52"		

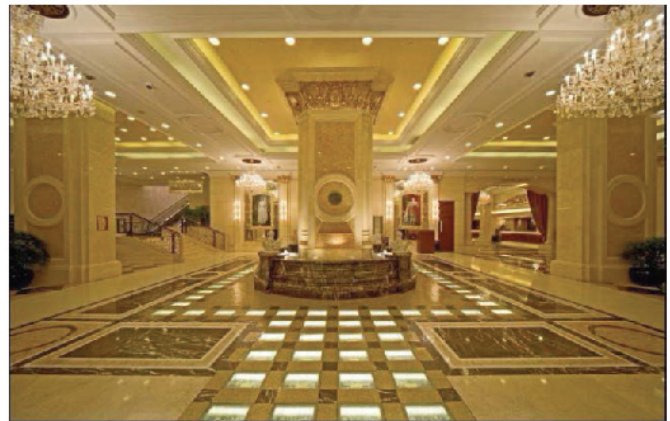


LED CANDLE LAMP 4.5W

LED CANDLE LAMP SERIES has been designed for commercial and residential applications, it is suitable for multi socket ornamental fixtures and decorative chandeliers.

FEATURES

- 120v/60Hz E26 - E12 base
- Replaces 25W Incandescent
- Efficacy: 77 Lm/W
- Illumination uniformity
- No glare, anti-punch, anti-quake
- Suitable for totally enclosed fixtures
- Dimmable 5-100%
- High Power Factor: 0.9
- Standard lifetime 25,000 hours
- High CRI > 80
- Working temperature: -4°F~+122°F



5 Years Warranty



Manufactured by:



Model	Watts	CTT	Lumens	CRI	Size	PF	Base
GAI-10-LM-CC-EX-4.5W-X	4.5	2700K	350	>80	1.50"x4.60"	0.9	E12, E26

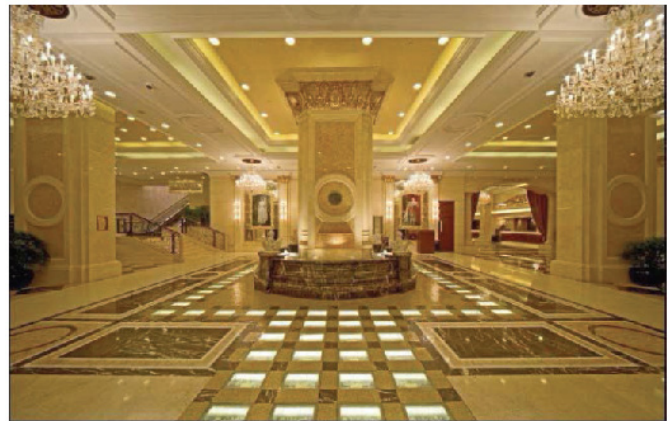


LED CANDLE LAMP 7W

LED CANDLE LAMP SERIES has been designed for commercial and residential applications, it is suitable for multi socket ornamental fixtures and decorative chandeliers.

FEATURES

- 120v/60Hz E26 - E12 base
- Replaces 60W Incandescent
- Efficacy: 71.4 Lm/W
- Illumination uniformity
- No glare, anti-punch, anti-quake
- Suitable for totally enclosed fixtures
- Dimmable 5-100%
- High Power Factor: 0.9
- Standard lifetime 25,000 hours
- High CRI > 80
- Working temperature: -4°F~+122°F



5 Years Warranty



Manufactured by:



Model	Watts	CTT	Lumens	CRI	Size	PF	Base
GAI-10-LM-CC-EX-7W-X	7	2700K	500	>80	1.69"x4.44"	0.9	E12, E26



LED GLOBE LAMP 8W

LED GLOBE LAMP SERIES has been designed indoor applications it is suitable for vanity, bath bar and pendant fixtures. It consumes only 8W and replaces a 60W incandescent bulb.

FEATURES

- 120v/60Hz E26 base
- Replaces 60W Incandescent
- Efficacy: 62.5 Lm/W
- Illumination uniformity
- No glare, anti-punch, anti-quake
- Suitable for totally enclosed fixtures
- Dimmable 5-100%
- High Power Factor: 0.9
- Standard lifetime 25,000 hours
- High CRI > 80
- Working temperature: -4°F~+122°F



5 Years Warranty



Manufactured by:



Model	Watts	CTT	Lumens	CRI	Size	PF	Base
GAI-10-LM-GC-E26-8W-X	8	2700K	500	>80	3.14"x4.48"	0.9	E26



LED GLOBE LAMP 5W CLEAR

LED GLOBE LAMP SERIES has been designed indoor applications it is suitable for vanity, bath bar and pendant fixtures. It consumes only 5W and replaces a 40W incandescent bulb.

FEATURES

- 120v/60Hz E26 - E12 base
- Replaces 40W Incandescent
- Efficacy: 78 Lm/W
- Illumination uniformity
- No glare, anti-punch, anti-quake
- Suitable for totally enclosed fixtures
- Dimmable 5-100%
- High Power Factor: 0.9
- Standard lifetime 25,000 hours
- High CRI > 80
- Working temperature: -4°F~+122°F



5 Years Warranty



Manufactured by:



Model	Watts	CTT	Lumens	CRI	Size	PF	Base
GAI-10-LM-GC-EX-4.5W-X	4.5	2700K	350	>80	3.14"x4.48"	0.9	E12, E26



LED MR 16 LAMP

LED MR 16 LAMP SERIES has been designed for commercial applications that demand accurate color representation. It is suitable for track, recessed lighting for home, office and retail.

FEATURES

- 120v/60Hz
- Beam angle: 35°
- 7W replaces 45W halogen
- 6W replaces 35W halogen
- Efficacy: 71Lm/W (7W), 58 Lm/W (6W)
- Illumination uniformity
- No glare, anti-punch, anti-quake
- Suitable for totally enclosed fixtures
- Dimmable 5-100%
- High Power Factor: 0.9
- Standard lifetime 25,000 hours
- High CRI > 80
- Working temperature: -4°F~+122°F



5 Years Warranty



Manufactured by:



Model	Watts	CTT	Lumens	CRI	Size	PF	Base
GAI-10-LM-MR16-GU5.3-6W-X	6	3000K	350	>80	1.97"x1.87"	0.9	GU 5.3
GAI-10-LM-MR16-GU5.3-7W-X	7	3000K	500				



LED MR 16 LAMP

LED MR 16 LAMP SERIES has been designed for commercial applications that demand accurate color representation. It is suitable for track, recessed lighting for home, office and retail.

FEATURES

- 120v/60Hz
- Beam angle: 35°
- 6.5W replaces 50W halogen
- 5.5W replaces 35W halogen
- Efficacy: 77Lm/W (6.5W), 64 Lm/W (5.5W)
- Illumination uniformity
- No glare, anti-punch, anti-quake
- Suitable for totally enclosed fixtures
- Dimmable 5-100%
- High Power Factor: 0.9
- Standard lifetime 25,000 hours
- High CRI > 80
- Working temperature: -4°F~+122°F



5 Years Warranty



Manufactured by:



Model	Watts	CTT	Lumens	CRI	Size	PF	Base
GAI-10-LM-MR16-GU10-5.5W-X	5.5	3000K	350	>80	1.97"x2.12"	0.9	GU 10
GAI-10-LM-MR16-GU10-6.5W-X	6.5	3000K	500				



LED BIG E LAMP

LED BIG E LAMP SERIES is a direct replacement for 400 watt metal halide lamps. Simply screw the bulb into the fixture with no need to bypass the ballast. Additional advantages against a regular metal halide are higher lumen maintenance, instant on and restrike, no color change, better color temperature, higher color rendition index (CRI) and cooler running temperature.

FEATURES

- No need to bypass ballast
- Instant start-up and restrike
- Beam angle: 95°
- 400W metal halide lamp replacement
- Efficacy: 104Lm/W (110W) 100 Lm/W (150W)
- Illumination uniformity
- Cool running lamp
- Directional light output producing a much brighter work area
- High Power Factor: 0.9
- Standard lifetime 50,000 hours
- High CRI: 80
- Working temperature: -4°F~+131°F
- 120V to 480V



5 Years Warranty



Manufactured by:



Model	Watts	CTT	Lumens	CRI	Size	PF	Base
GAI-10-LED-HID-X-110W-X	110	5000K	11500	>80	12.83"x7.48"	0.9	EX 39
GAI-10-LED-HID-X-150W-X	150	5000K	15000				



LED LINEAR VAPOR TIGHT

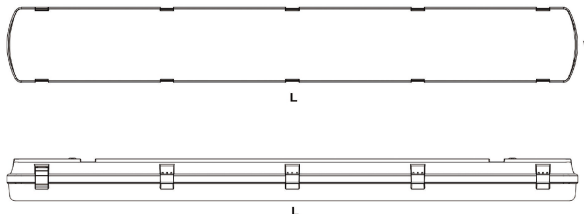
LED LINEAR VAPOR TIGHT are engineered for powerful lighting in harsh environments. A vapor tight housing protects the light source from water and dirt, while new generation LEDs and drivers provide higher efficacy and greater energy savings. The IP66-rated fixtures are designed to replace less-efficient fluorescent strip lights in car wash operations, airports, tunnels, maintenance areas, parking garages and stairwells.

FEATURES

- Unique three piece that allows effortless assembly without any tools
- 100% UV stabilized polycarbonate housing, liquid silicone perimeter gasket.
- Milky white polycarbonate lens with inside ribbing
- Non corrosive white glass reinforced polyester body protects the LED light source from water and dirt from vehicular traffic and natural elements
- Operates on 120- to 277-volt systems
- Constructed with LED chips with high-ranked binning that ensures color uniformity and produces accurate color rendering.
- 0-10V standard dimming
- Standard Lifetime: Designed minimum 50,000
- Mounting: Surface Mounting
- Standard Warranty: 5 Years



5 Years Warranty



Manufactured by:



Model	Watts	CTT	Efficacy lm/w	CRI	Size	PF	Cover
GAI-04-LVP-4-42W-X	42	3000K, 3500K,	103	>80	50.2"x6.6"x3.6"	>0.9	Diffuser
GAI-04-LVP-4-68W-X	68	4000K, 5000K					



LED 4FT STRIP

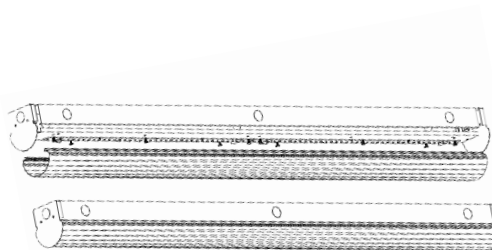
LED 4FT STRIP is an ideal choice for size restricted architectural applications. LED Strip Series can be the illumination solution in commercial, industrial, retail and residential applications. Fixtures can be used in storage/utility ares, coves, display cases, shops, task and general area lighting.

FEATURES

- Efficacy >110LPW
- CRI: Ra>80
- The STR fixture is powered with standard a 0-10V continuous dimming driver ranging from 10%-100% that works with 0-10V control/dimmer. The driver efficiency up to 85%
- THD: <20%
- The well-designed luminaire structure with excellent heat-dissipation features ensures the steady performance and durable lifetime. Tool-free to access drivers for maintenance
- The Espen Driver ensures steady performance and long lifetime
- Temperature Limited: -20°C 55°C
- Standard Lifetime: Designed for 50,000 hours
- Mounting: Fixture may be surface, pendant or tandem-mounted is available well
- Also available with occupancy sensors
- Standard Warranty: 5 years



5 Years Warranty



Manufactured by:



Model	Watts	CTT	Lumens	CRI	Size	PF	Cover
GAI-04-STR-4-24W-XX	24	3000K, 3500K	2520	>80	48"x3.2"x3.4"	>0.9	Frosted
GAI-04-STR-4-36W-XX	36	4000K, 5000K	3780				

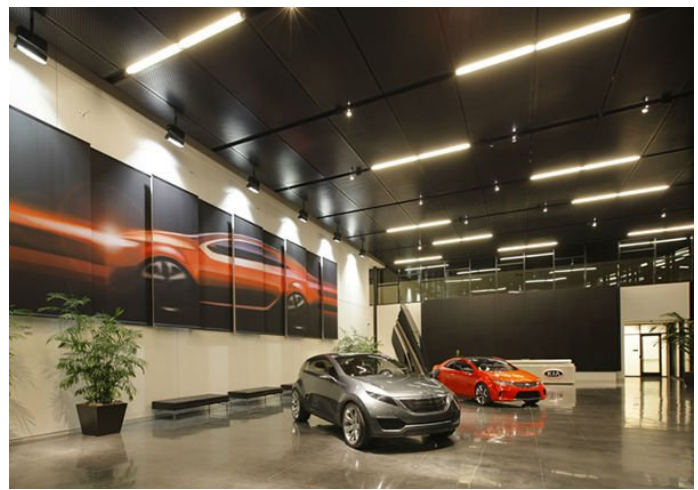


LED 8FT STRIP

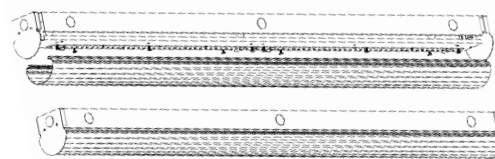
LED 8FT STRIP is an ideal choice for size restricted architectural applications. LED Strip Series can be the illumination solution in commercial, industrial, retail and residential applications. Fixtures can be used in storage/utility ares, coves, display cases, shops, task and general area lighting.

FEATURES

- Efficacy >110LPW
- CRI: Ra>80
- The STR fixture is powered with standard a 0-10V continuous dimming driver ranging from 10%-100% that works with 0-10V control/dimmer. The driver efficiency up to 85%
- THD: <20%
- The well-designed luminaire structure with excellent heat-dissipation features ensures the steady performance and durable lifetime. Tool-free to access drivers for maintenance
- The Espen Driver ensures steady performance and long lifetime
- Temperature Limited: -20°C 55°C
- Standard Lifetime: Designed for 50,000 hours
- Mounting: Fixture may be surface, pendant or tandem-mounted is available well
- Also available with occupancy sensors
- Standard Warranty: 5 years



5 Years Warranty



Manufactured by:



Model	Watts	CTT	Lumens	CRI	Size	PF	Cover
GAI-04-STR-8-42W-XX	42	3000K, 3500K	2520	>80	48"x3.35"x3.56"	>0.9	Frosted
GAI-04-STR-8-68W-XX	68	4000K, 5000K	3780				



LED ROUNDED CEILING FIXTURE

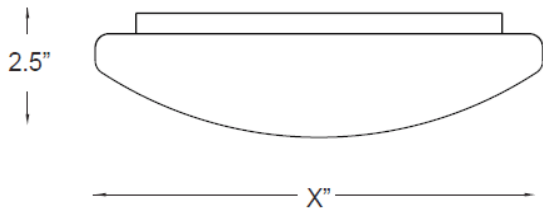
LED ROUNDED CEILING SERIES is suitable in every indoor environment. This low profile luminaire has contoured diffuser in three sizes and is for wall and ceiling mounting.

FEATURES

- Continuous dimmer
- Green, energy saving, long and reliable life of 35,000 hours
- Environment friendly, energy saving 80%
- Translucent, UV stabilized white acrylic
- Diffuser molded in the familiar round puff shape and provides a uniform thickness throughout
- Efficacy: 82.3 Lm/W (13W), 82.8 Lm/W (18W), 70.4 Lm/W (32W)
- Power Factor > 0.9
- CRI > 80
- Working temperature: -4°F~+122°F
- 100-277V Rated Voltage



5 Years Warranty



Manufactured by:



Model	Watts	CTT	Lumens	CRI	Size	PF	Diffuser
GAI-10-LED-AC-9R-X-13W-X	13	4000K	900	85	9"x2.5"	>0.9	White Acrylic
GAI-10-LED-AC-13R-X-18W-X	18	4000K	1300	85	13"x2.5"		
GAI-10-LED-AC-19R-X-32W-X	32	4000K	2000	87	19"x2.5"		



LED ART DECO CEILING FIXTURE

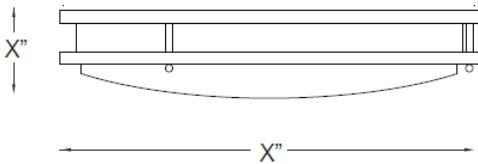
LED ART DECO CEILING SERIES is suitable in every indoor environment. This low profile luminaire has contoured diffuser in two sizes and is for wall and ceiling mounting. Art deco design with a modern flair for any contemporary interior.

FEATURES

- Continuous dimmer
- Green, energy saving, long and reliable life of 50,000 hours
- Environment friendly, energy saving 80%
- White glass diffuser
- Efficacy: 74 Lm/W (15W), 67.3 Lm/W (23W)
- Power Factor > 0.9
- CRI > 80
- Working temperature: -4°F~+122°F
- Optional transformer (TS27-12) to convert to 120V from 277V input



5 Years Warranty



Manufactured by:



Manufactured by:



Model	Watts	CTT	Lumens	CRI	Size	PF	Diffuser
GAI-17-CFM-312-15W-X	15	2700K	988	81	12"x3"	>0.9	White Glass or Acrylic
GAI-17-CFM-314-23W-X	23	3000K 3500K	1403	81	14"x4"		
GAI-17-CFM-317-34W-X	34	4000K	2000	81	17"x4"		



LED ART DECO CEILING FIXTURE 24"

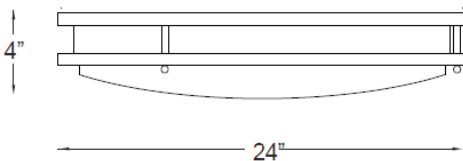
LED ART DECO CEILING SERIES is suitable in every indoor environment. This low profile luminaire has contoured diffuser and is for wall and ceiling mount. Art deco design with a modern flair for any contemporary interior.

FEATURES

- Cold rolled 20 GA steel, formed with spinning and die punch tooling. The assembly also features machined steel spacers and is assembled with brass hardware
- Translucent, UV stabilized white acrylic. The diffuser is injection molded allowing for a uniform standard thickness of 0.06" throughout
- 12LED 1303 lumens - 108 lumens per watt
- Max ambient temperature - 40° C / 104° F
- Mounting directly to j-box (by others)
- CRI 80
- 54,000 hours lifespan (L70)
- Dimming Driver (100-277V)
- Working temperature: -4°F~+122°F



5 Years Warranty



Manufactured by:



Model	Watts	CTT	Lumens	CRI	Size	PF	Diffuser
GAI-23-LED-AC-24R-X-12W-X	12	3000K, 4000K	1275	>80	24"x4"	>0.9	White Acrylic

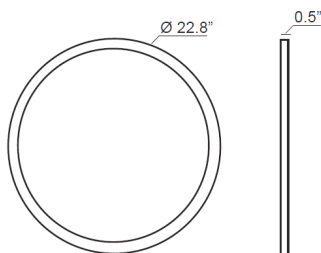


LED ROUND PANEL LIGHT

LED ROUND PANEL LIGHT SERIES adopts qualified super bright LED as light source, which is stable, long life and no UV & IR emission. The anodized aluminum frame is stylish and fashionable with everlasting color. It is powered by low voltage constant current driver, which is safety, energy saving and long life. LED Round Panel Light is the ideal replacement for traditional grid lights and fluorescent tubes.

FEATURES

- Ultra slim design
- Modern stylish and innovative design
- Uniform light output
- Up/Down lighting optional
- Anti glare UGR19 optional
- Transparent optional
- White, Black, silver finishing available
- Life Span over 50,000 hours
- Suspended and ceiling mounted options
- Beam angle: 120°
- CRI > 80
- PF > 0.95
- Input Voltage: 100-277V



5 Years Warranty

Manufactured by:



Model	Watts	CTT	Lumens	CRI	Size	Diffuser
GAI-21-RP-2-40W-X	40	3000K, 4000K, 5000K	3400	>80	Ø22.8"	Frosted



LED UNDERCABINET LIGHT

LED UNDERCABINET LIGHT SERIES is an energy efficient solution for under cabinet lighting. It features a white finish and a clear diffuser. The LED lamp offers ample, long-lasting light. Compact 0.92" profile is nearly invisible under counters and most cabinets. Easy-reach on/off and low switch. Linkable connection available.

FEATURES

- Ultra slim design
- White finish LED undercabinet light
- Acrylic frosted diffuser
- 35,000 hours lifetime
- 4 lengths available, 9", 12", 18", 24"
- End to end connection
- 3 Position Switch High, Off, Low
- Under counter, under cabinet style
- CRI > 80
- PF > 0.9
- Beam angle: 90°
- Input Voltage: 120V

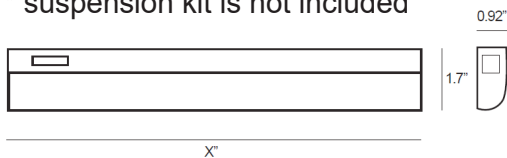
SPECIFICATIONS

Housing: Aluminum Optics: Opal Input

Voltage: 100-277V/AC

Installation: Suspension* / Surface Mounted

* suspension kit is not included



5 Years Warranty



Manufactured by:



Model	Watts	CTT	Lumens	CRI	Size	Diffuser
GAI-28-UC-9-3.5W-X	3.5	3000K, 3500K, 4000K	280	>80	9"	Frosted
GAI-28-UC-12-4.5W-X	4.5	3000K, 3500K, 4000K	360	>80	12"	
GAI-28-UC-18-6.8W-X	6.8	3000K, 3500K, 4000K	530	>80	18"	
GAI-28-UC-21-7.9W-X	7.9	3000K, 3500K, 4000K	610	>80	21"	
GAI-28-UC-24-9W-X	9	3000K, 3500K, 4000K	685	>80	24"	
GAI-28-UC-36-12.4W-X	12.4	3000K, 3500K, 4000K	930	>80	36"	
GAI-28-UC-48-16.7W-X	16	3000K, 3500K, 4000K	1230	>80	48"	



LED LINEAR FIXTURE (curve)

LED LINEAR FLAT PANEL adopts qualified super bright LED as light source, which is stable, long life and no UV & IR emission. The anodized aluminum frame is stylish and fashionable with everlasting color. It is powered by low voltage constant current driver, which is safety, energy saving and long life. LED LINEAR FLAT PANEL light is the ideal replacement for traditional grid lights and fluorescent tubes. Moreover, LED LINEAR FLAT PANEL light creates extremely harmonious and uniform lights, which conventional light never achieved.

FEATURES

- Edge lit technology, soft and uniform light distribution
- Built-in driver, direct connect to the mains
- Super fast installation, suspended or surface mounted
- Competitive price
- Modern, stylish, excellent surface treatment
- Durable with life span over 50,000 hours
- 3 Years Guarantee
- Ideal replacement to T5/T8 fixture
- No UV or IR emissions



SPECIFICATIONS

Housing: Aluminum

Optics: Opal

Input Voltage: 200-240V/AC

Installation: Suspension / Surface Mounted



5 Years Warranty



Manufactured by:



Model	Watts	CTT	Lumens	CRI	Beam	Size AxBxC	PF	Diffuser
GAI-21-LED-PAN-20W-X	20	3000K	1300	80	120°	45.3"x1.77"x1.37"	>0.95	Polycarbonate
		4000K	1500					
		6000K	1700					



LED LINEAR FIXTURE

LED LINEAR BOX FIXTURE is a unique and innovative product, which is the first edge lit linear panel with built-in driver. A hybrid of edge lit technology, with its extremely high efficiency and well controlled UGR, the LED LINEAR BOX FIXTURE is suitable to be used as a linear high-bay for work place and offices.

FEATURES

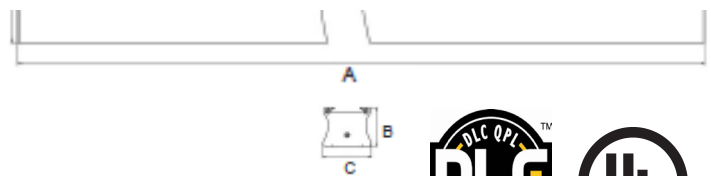
- High lighting efficiency, upto 100 Lm/W
- Powerful light output, upto 1500 Lm/Meter
- Built-In Driver
- UGR<19, ideal light distribution for Office Lighting
- Super fast installation, suspended or surface mounted
- Connectable. Fast installation, suspended or surface mounted
- Modern, stylish, excellent surface treatment
- Durable with life span over 50,000 hours
- 3 years guarantee

SPECIFICATIONS

Housing: Aluminum

Input Voltage: 100-277V/AC

Installation: Suspension / Surface Mounted



Manufactured by:



Model	Watts	CTT	Lumens	CRI	Beam	Size AxBxC	PF	Diffuser
GAI-21-LED-BOX-26W-X	26	3000K	2400	80	120°	45.3" x 2.2" x 2.6"	>0.95	Polycarbonate
		4000K	2600					
		6000K	2800					
GAI-21-LED-BOX-30W-X	30	3000K	2800	80	120°	57.1" x 2.2" x 2.6"	>0.95	Polycarbonate
		4000K	3000					
		6000K	3200					



EASTRON SDM630

The unit is a Single and Three Phase multi-function meter. The unit measures and displays: voltage, frequency, current, power, active and reactive energy, imported or exported. Energy is measured in terms of kWh, kVarh. Demand current can be measured over preset periods of up to 60 minutes.

In order to measure energy, the unit requires voltage and current inputs in addition to the supply required to power the product. The requisite current input(s) are obtained via current transformers (CT). This meter can be configured to work with a wide range of CTs, giving the unit a wide range of operation. Built-in interfaces provide Output pulses. Configuration is password protected.

FEATURES

The Unit can measure and display:

- Line voltage and THD% (total harmonic distortion) of all phases
- Line Frequency
- Currents, Current demands and current THD% of all phases
- Power, maximum power demand and power factor
- Active energy imported and exported
- Reactive energy imported and exported

The unit provides two outputs that indicate real-time energy measurement:

- A RS485 serial port with Modbus RTU protocol
- A two pulse output that clocks up measured active and reactive energy.



The first screen lights up all display segments and can be used as a display check.



The second screen indicates the firmware installed in the unit and its build number.

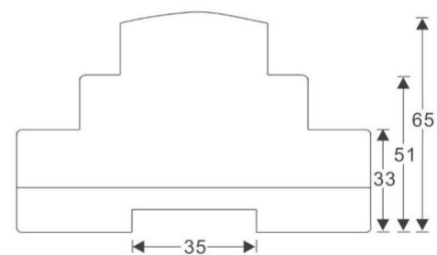
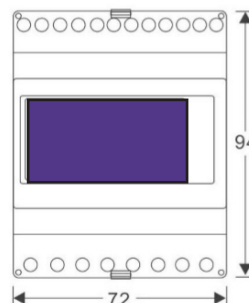


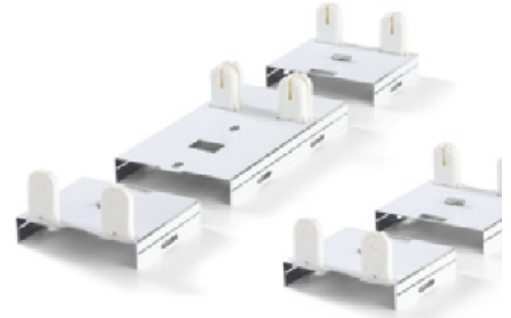
The interface performs a self-test and indicates the result if the test passes.

Model

Size

GAI-38-MET-3PH-X





T8 RETROFIT CONVERSION KIT

Converts older 4-foot and 8-foot T8 or T12 strip light fixtures into energy efficient T8 light fixtures. Each kit includes:

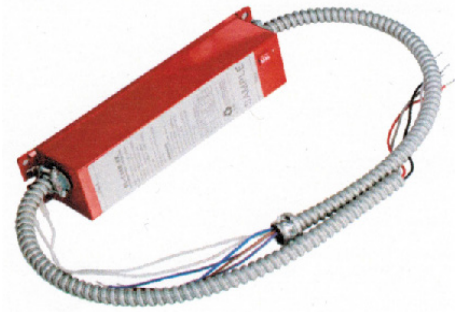
- T8 Bi-Pin Lamp Sockets, T8 RetroFit Bracket Socket Plates and Self-Tapping Screws
- Complies with UL Standard 1598B and 1598C
- Pre-wired conversion kit bracket; the installer only needs to complete the bracket installation and ballast lead terminations
- Pre-painted with smooth, glossy, highly reflective white paint
- Includes pre-drilled holes for installing Ballast Cover or Reflectors

FEATURES

- Easily retrofits existing T12 fluorescent light fixtures to energy efficient and high lumen output T8 light fixtures
- Suitable for use with all manufacturers' T8 lamps
- Lowers maintenance costs due to less frequent T12 lamp replacement
- High efficiency T8 lamps use 40% fewer watts, produce 40% less heat, and output 10% more lumens when compared to older magnetic T12 light fixtures

Building owners and facility managers can significantly increase their energy savings by:

- Reducing your kWh consumption to 40% or more. More over they can reduce the demand (kW) charge, where applicable, which in many cases can account for 50% of the monthly electrical bill
- Reducing the HVAC costs by removing a significant amount of the excess heat generated by existing inefficient T12 fluorescent lighting
- Reduces the negative side effects of poor light quality. Worker productivity can increase 9-16% or more as the result of improved light quality
- P/Ns: 14070 and 14076 may be suitable for use with Linear LED Retrofit Lighting.
- These designated RetroFit Conversion Kits part numbers fitted with "non-shunted" lamp holders are suitable for use with linear LED engines (T8 shaped LED tubes) as long as the LED engine is classified per UL 1598C.



LED EMERGENCY EQUIPMENT (LED Product With External Driver)

The LED Emergency from Green Apple is a UL Recognizer LED Emergency Equipment that allows the same LED fixture to be used for both normal and emergency operation. In the event of power failure, the LED Emergency Equipment switches to the emergency mode and operates the existing fixture for 90 minutes. The unit contains a battery, charger, and converter circuit in a single can and is available in different mounting configurations for individual fixture requirements.

FEATURES

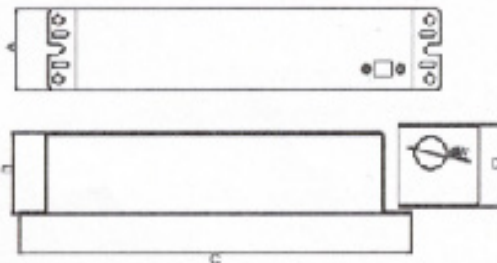
- Dial the code to suitable rated voltage of luminaire.
- Long life high temperature recyclable NI-Cad Battery.
- Includes test switch and charger indicator accessory kit.
- For use with switched or unswitched fixtures
- Meets or exceeds all National Electrical Code and Life Safety Code Emergency Lighting

TECHNICAL SPECIFICATIONS (GAI-05-EDXXX-XX(U/G))

Model(U/G)	ED8W-XXU	ED12W-XXU	ED25W-XXU
Input Voltage	100-277VAC, 50-60Hz		
Input Current	55mA (max)	95mA (max)	80mA (max)
Input Power	4.8 Watts (max)	4.8 Watts (max)	6 Watts (max)
Output Voltage	12V-48VDC	12V-48VDC	18V-48VDC
Max. Connected Load	0.5 A	0.75 A	1.04 A
Output Power	8W (max)	12W (max)	25W (max)
Emergency Operation	≥ 90 minutes		
Battery	High Temp Nickel-Cadmium 24 Hour Recharge 7-10 Year Life Expectancy		
UL Conditions of Acceptability	Must be factory wired Battery temperature must not exceed 50°C		
Model(U/G/U)	ED8W-XXG	ED12W-XXG	ED25W-XXG
Input Voltage	120-250VAC, 50-60Hz		
Input Current	55mA (max)	95mA (max)	80mA (max)
Input Power	4.8 Watts (max)	4.8 Watts (max)	6 Watts (max)
Output Voltage	12V-48VDC	12V-48VDC	18V-48VDC
Max. Connected Load	0.5 A	0.75 A	1.04 A
Output Power	8W (max)	12W (max)	25W (max)
Emergency Operation	≥ 90 minutes		
Battery	High Temp Nickel-Cadmium 24 Hour Recharge 7-10 Year Life Expectancy		
UL Conditions of Acceptability	Must be factory wired Battery temperature must not exceed 50°C		

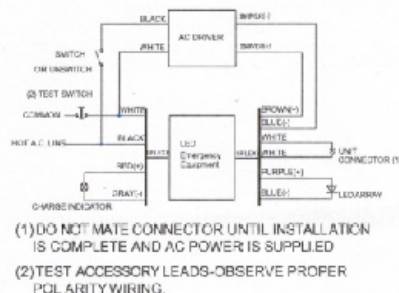
Model	Emergency Power	Switch select	Voltage	Current
ED8W-XXU ED8W-XXG	8W	1	12-16V	0.5A
		2	16-24V	0.33A
		3	24-36V	0.22A
		4	36-48V	0.16A
ED12W-XXU ED12W-XXG	12W	1	12-16V	0.75A
		2	16-24V	0.5A
		3	24-36V	0.33A
		4	36-48V	0.25A
ED25W-XXU ED25W-XXG	25W	1	18-24V	1.040A
		2	24-36V	0.7A
		3	36-42V	0.8A
		4	42-48V	0.52A

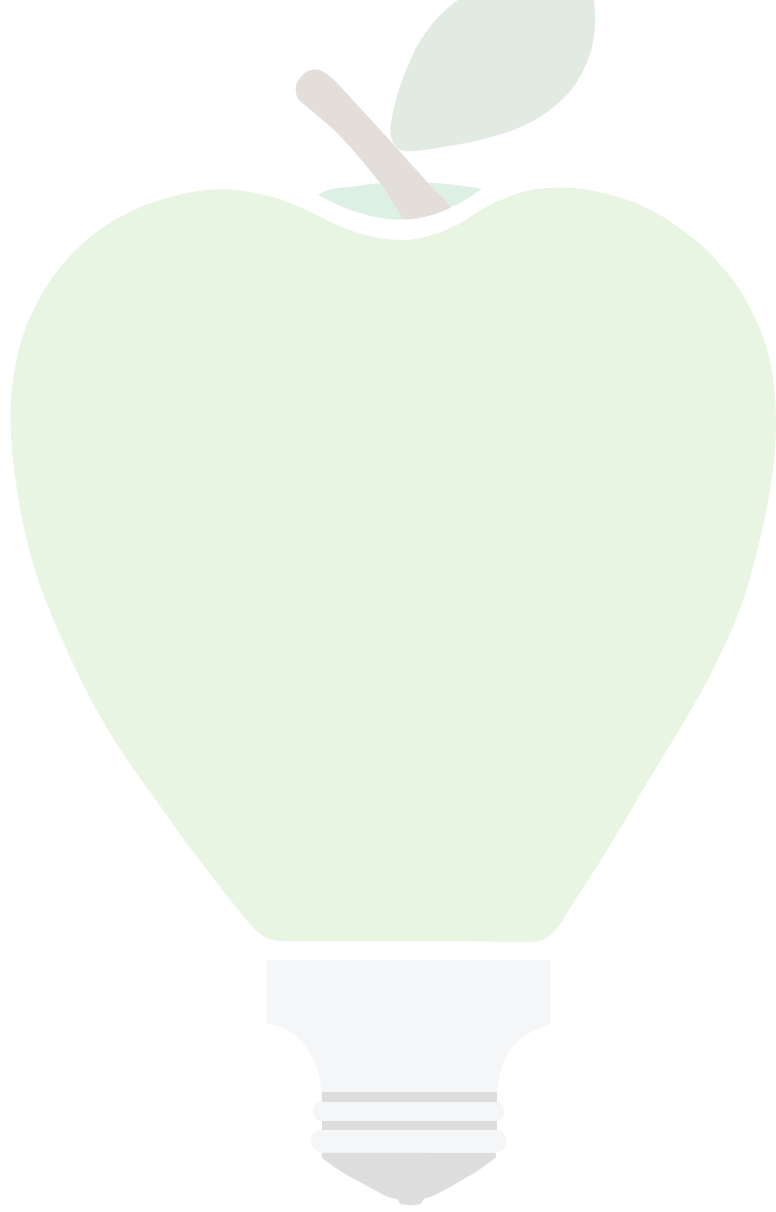
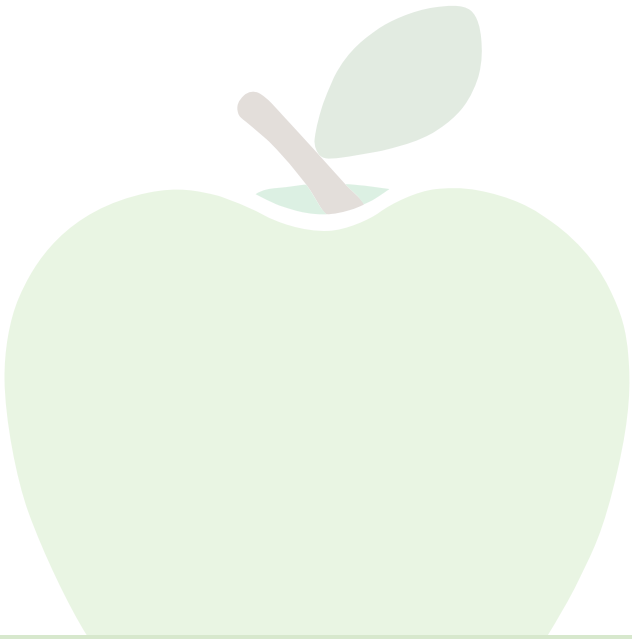
Dimensions



Model	ED8W-XXU ED8W-XXG	ED12W-XXU ED12W-XXG	ED25W-XXU ED25W-XXG
A	55.4mm	55.4mm	69mm
B	55mm	55mm	71mm
C	264.6mm	264.6mm	377mm
D	69mm	55.4mm	69mm
E	22.2mm	22.2mm	22.2mm

TYPICAL WIRING DIAGRAM





2016 © Green Apple Lighting USA