

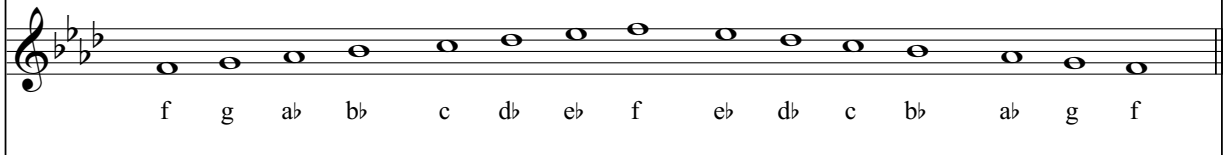
# f minor

relative major: A $\flat$  +

key signature: b $\flat$  e $\flat$  a $\flat$  d $\flat$

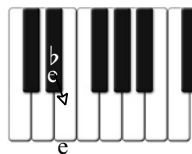
## f minor natural

The natural minor simply borrows the key signature of it's relative, A $\flat$  major.

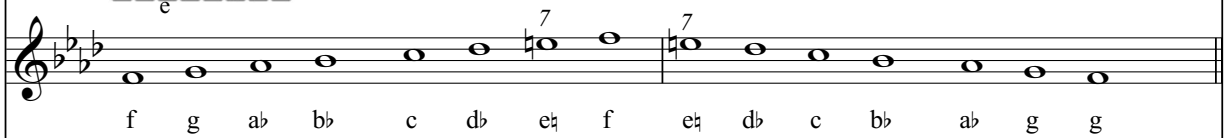


## f minor harmonic

The 7th note is raised a half step ascending and descending the scale.



The 7th note is e $\flat$  (see the key signature) and it is raised to e $\natural$  creating the *leading note*.



## f minor melodic

The 6th and 7th notes are raised a half step ascending the scale and lowered a half step descending the scale.

Ascending the scale the 6th note is d $\flat$  (see the key signature) and is raised to d $\sharp$ .

