

Course Disc Golf Values – Morning tee times available starting at Sunrise until half an hour after sunrise.

Tee times available up to 3 days in advance.
Call Wild Horse Golf Shop at 702-434-9000 ext. #1.
Identify reservation as "Disc Golf."
\$10 fee includes cart! Dress code enforced.
Outside food & beverages prohibited.



Want to help with or sponsor the 2017 GCC here at Wild Horse? Contact director at lvdgc@cox.net



Two meter rule is in effect.
Sand traps are a hazard:
Take one-stroke penalty and play it where it lies;
No relief from sand traps.
All tee pads are on a cart path except Holes 12 & 18.
All cart paths are O.B.
Hole 18 has a mandatory (must go left of large tree in front of tee pad).



Hole	Dist.	Par	Out of Bounds
1	450'	3	Cart path & beyond to right.
2	438'	3	Cart path & beyond to right, green, fence & beyond behind basket. Sand traps are hazards.
3	267'	3	Cart path & beyond to right, green, fence & beyond behind basket. Sand traps are hazards.
4	378'	3	Cart path & beyond to left, green, fence & beyond to right.
5	708'	4	Cart path & beyond to left, fence & beyond to right.
6	399'	3	Cart path & beyond to left, green, cart path & beyond behind basket.
7	705'	4	Cart path & beyond to left, water.
8	516'	4	Cart path & beyond to left, TEE 9's cart path & beyond to right, cart path & beyond behind basket. Sand trap is a hazard.
9	453'	3	Cart path & beyond to left, water, green.
10	606'	4	Cart path & beyond to left, fence & beyond to right, green. Sand traps are hazards.
11	410'	3	Area BETWEEN tee and grass is O.B. (must clear cart path to be safe), green, cart path & beyond behind basket. Sand trap is a hazard.
12	597'	4	TEE is on FRONT & RIGHT-SIDE of LONG grass tee pad. Cart path & beyond to left, TEE 17's cart path & beyond to right.
13	380'	3	Cart path & beyond to left, TEE 16's cart path & beyond to right.
14	411'	3	Area BETWEEN tee and grass is O.B. (must clear cart path to be safe), TEE 16's cart path & beyond to right, water.
15	575'	4	Cart path & beyond to right, fence & beyond to left. Sand trap is a hazard.
16	702'	4	Cart path & beyond to right, water area, green, cart path & beyond near basket. Sand traps are hazards. Creek near sand traps and basket is casual water.
17	585'	4	Cart path & beyond to left. Sand traps are hazards.
18	495'	3	TEE is left of small tree. Mandatory left of large tree in front of tee. Cart path & beyond to left, green, cart path & beyond behind basket.
Total	9,075'	62	

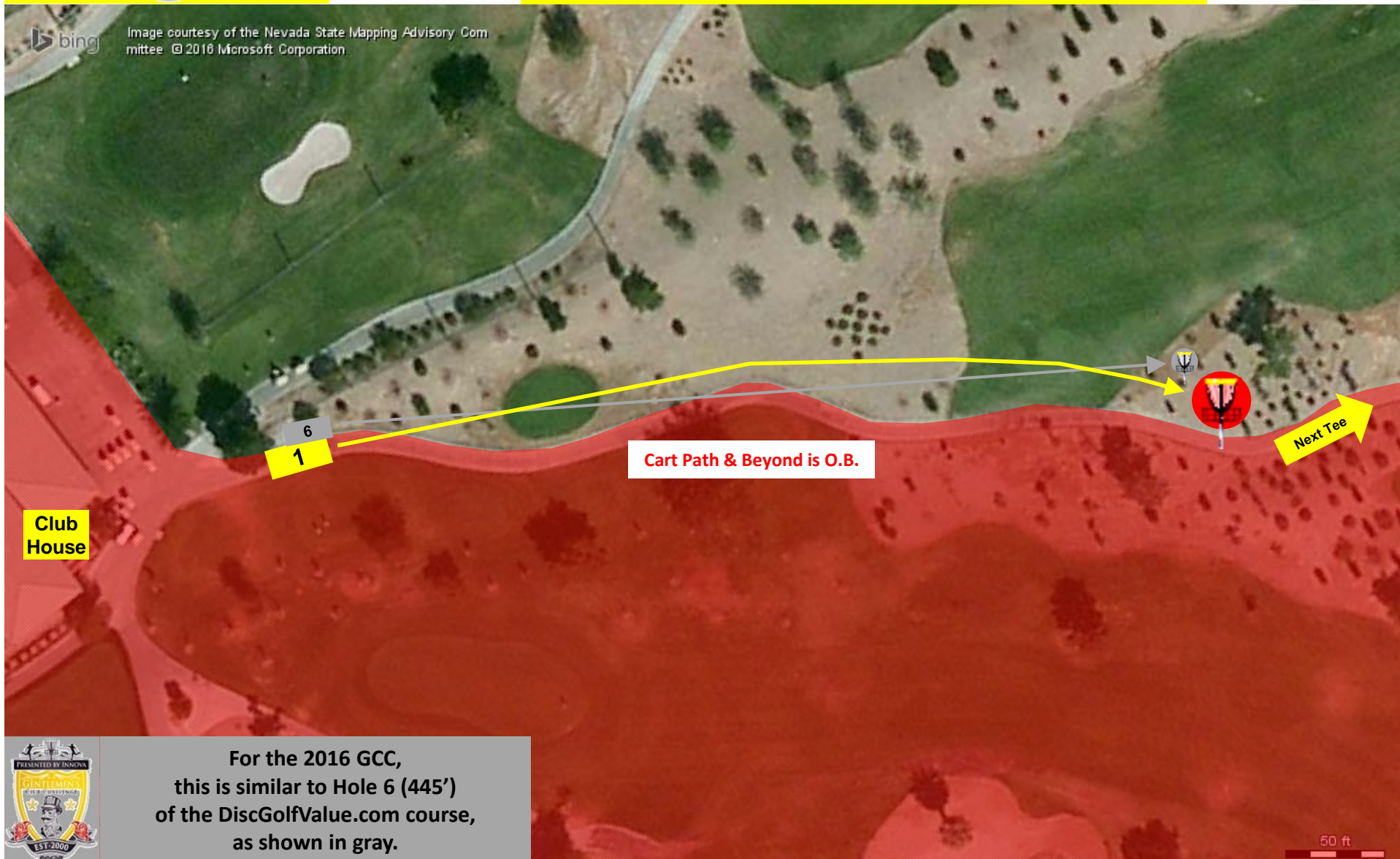
Hole 1

Distance - 450' Par 3



Your Logo/Information here!

If you would like to sponsor the 2017 GCC, please contact the director at lvdgc@cox.net. Your logo/information will be added to this individual map from now until the prior the 2017 GCC.



For the 2016 GCC,
this is similar to Hole 6 (445')
of the DiscGolfValue.com course,
as shown in gray.



Hole 2

Distance - 438' Par 3

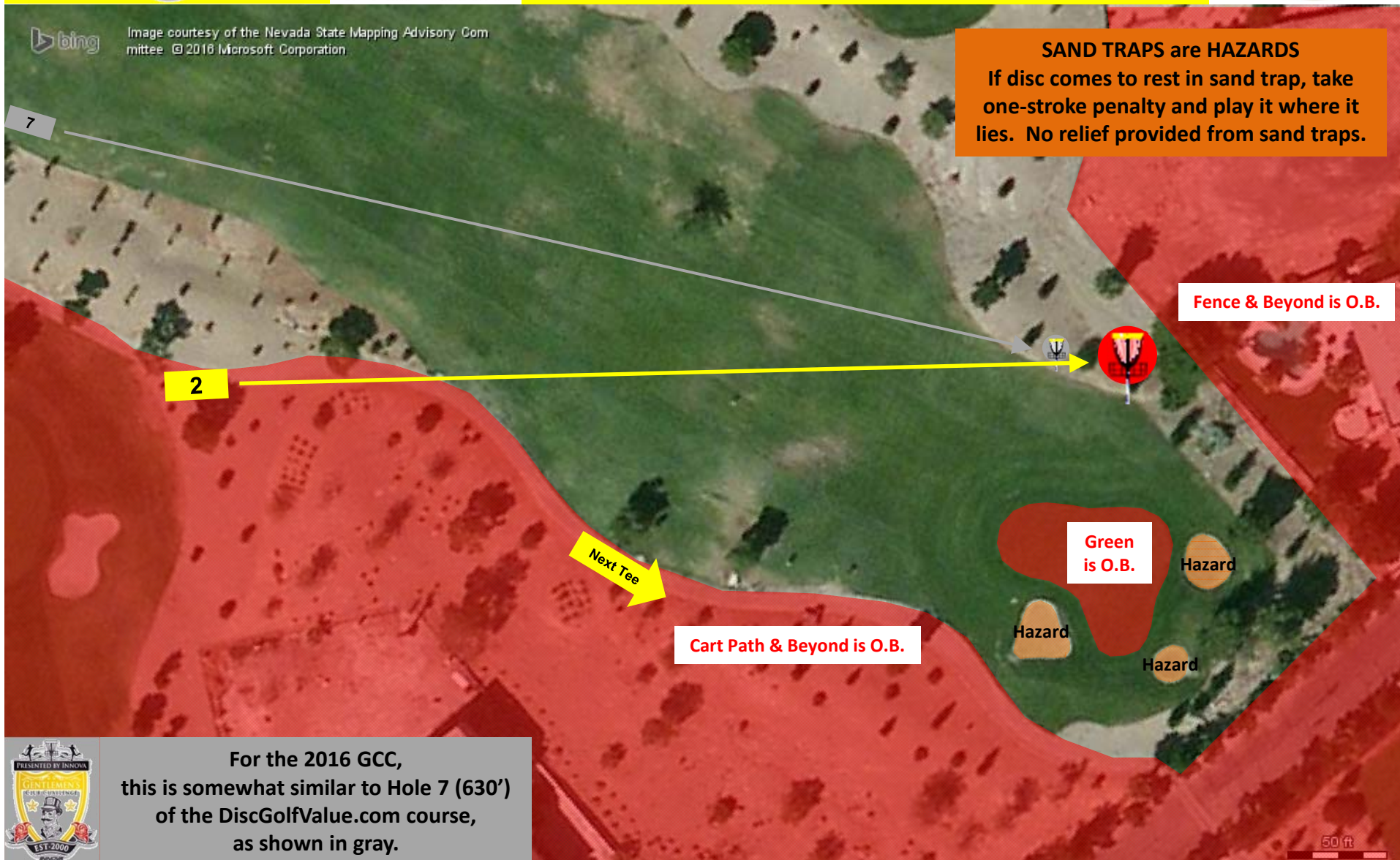


Your Logo/Information here!

If you would like to sponsor the 2017 GCC, please contact the director at lvdgc@cox.net. Your logo/information will be added to this individual map from now until the prior the 2017 GCC.



Image courtesy of the Nevada State Mapping Advisory Committee © 2016 Microsoft Corporation



For the 2016 GCC, this is somewhat similar to Hole 7 (630') of the DiscGolfValue.com course, as shown in gray.

50 ft

Hole 3

Distance - 267' Par 3



Your Logo/Information here!

If you would like to sponsor the 2017 GCC, please contact the director at lvdgc@cox.net. Your logo/information will be added to this individual map from now until the prior the 2017 GCC.



Image courtesy of the Nevada State Mapping Advisory Committee © 2016 Microsoft Corporation

SAND TRAPS are HAZARDS
If disc comes to rest in sand trap, take one-stroke penalty and play it where it lies. No relief provided from sand traps.

Fence & Beyond is O.B.

Green
is O.B.

Hazard

Hazard

Hazard

Cart Path & Beyond is O.B.

Next Tee



For the 2016 GCC,
this is similar to Hole 8 (273')
of the DiscGolfValue.com course,
as shown in gray.

50 ft

Hole 4

Distance - 378' Par 3



Your Logo/Information here!

If you would like to sponsor the 2017 GCC, please contact the director at lvdgc@cox.net. Your logo/information will be added to this individual map from now until the prior the 2017 GCC.



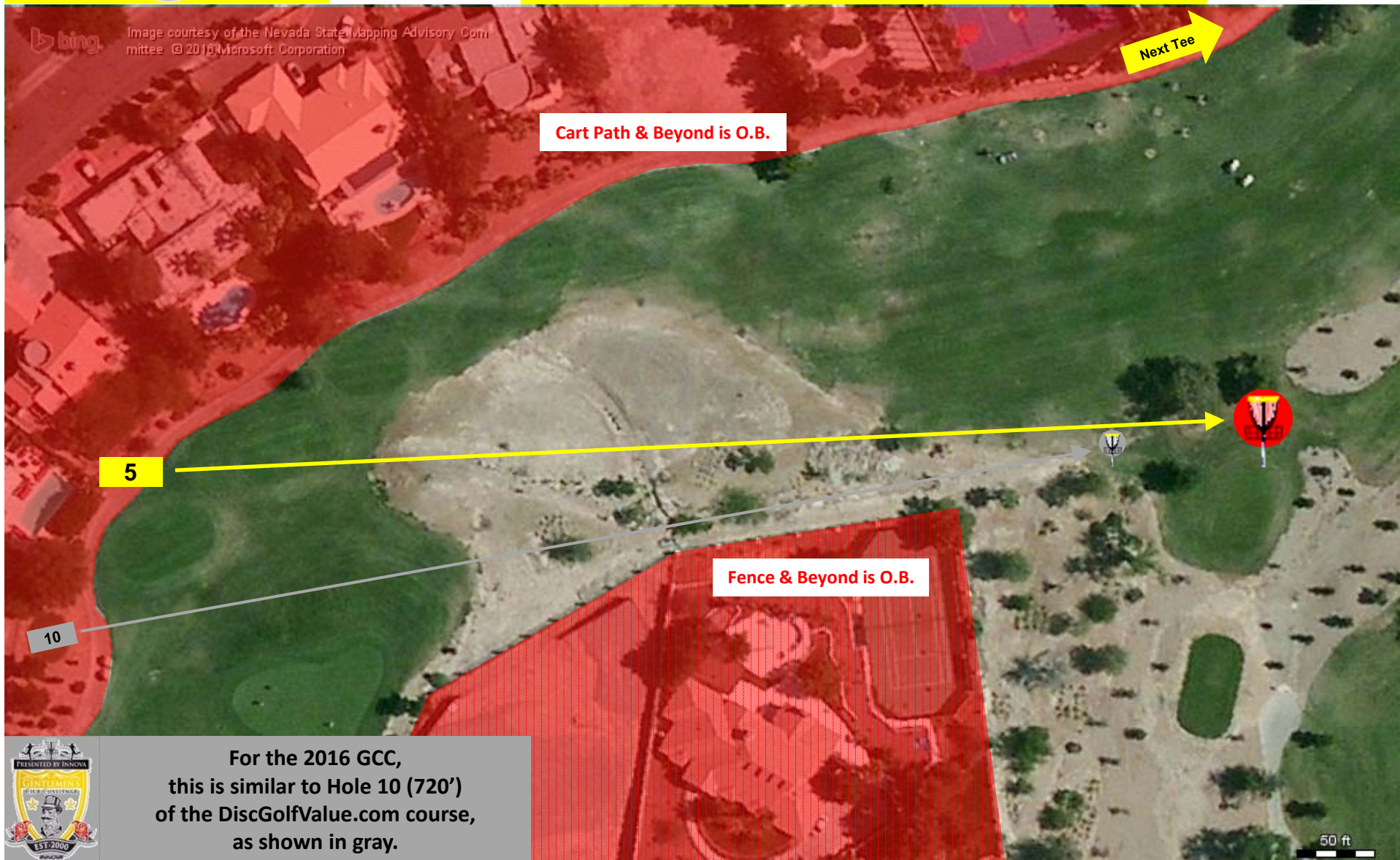
Hole 5

Distance - 708' Par 4



Your Logo/Information here!

If you would like to sponsor the 2017 GCC, please contact the director at lvdgc@cox.net. Your logo/information will be added to this individual map from now until the prior the 2017 GCC.



For the 2016 GCC,
this is similar to Hole 10 (720')
of the DiscGolfValue.com course,
as shown in gray.

Hole 6

Distance - 399' Par 3



Your Logo/Information here!

If you would like to sponsor the 2017 GCC, please contact the director at lvdgc@cox.net. Your logo/information will be added to this individual map from now until the prior the 2017 GCC.



For the 2016 GCC, this is somewhat similar to Hole 11 (594') of the DiscGolfValue.com course, as shown in gray.



Hole 7

Distance - 705' Par 4



Your Logo/Information here!

If you would like to sponsor the 2017 GCC, please contact the director at lvdgc@cox.net. Your logo/information will be added to this individual map from now until the prior the 2017 GCC.



For the 2016 GCC, this is a combination of Hole 12 (453') & Hole 14 (294') of the DiscGolfValue.com course, as shown in gray.

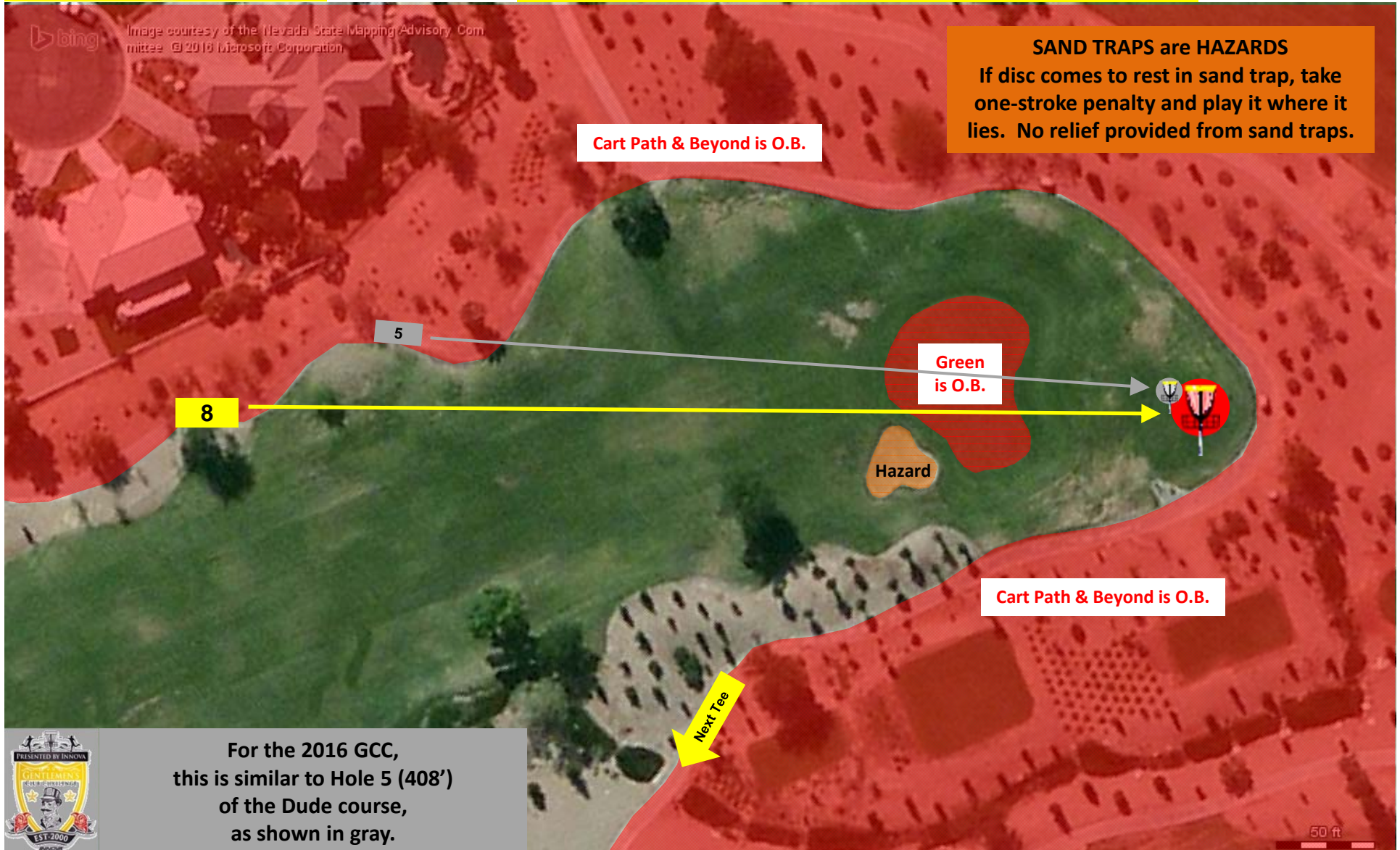
Hole 8

Distance - 516' Par 4



Your Logo/Information here!

If you would like to sponsor the 2017 GCC, please contact the director at lvdgc@cox.net. Your logo/information will be added to this individual map from now until the prior the 2017 GCC.



For the 2016 GCC, this is similar to Hole 5 (408') of the Dude course, as shown in gray.

Hole 9

Distance - 453' Par 3



Your Logo/Information here!

If you would like to sponsor the 2017 GCC, please contact the director at lvdgc@cox.net. Your logo/information will be added to this individual map from now until the prior the 2017 GCC.



Hole 10

Distance - 606' Par 4



Your Logo/Information here!

If you would like to sponsor the 2017 GCC, please contact the director at lvdgc@cox.net. Your logo/information will be added to this individual map from now until the prior the 2017 GCC.



For the 2016 GCC,
this is similar to Hole 16 (928')
of the DiscGolfValues.com course,
as shown in gray.

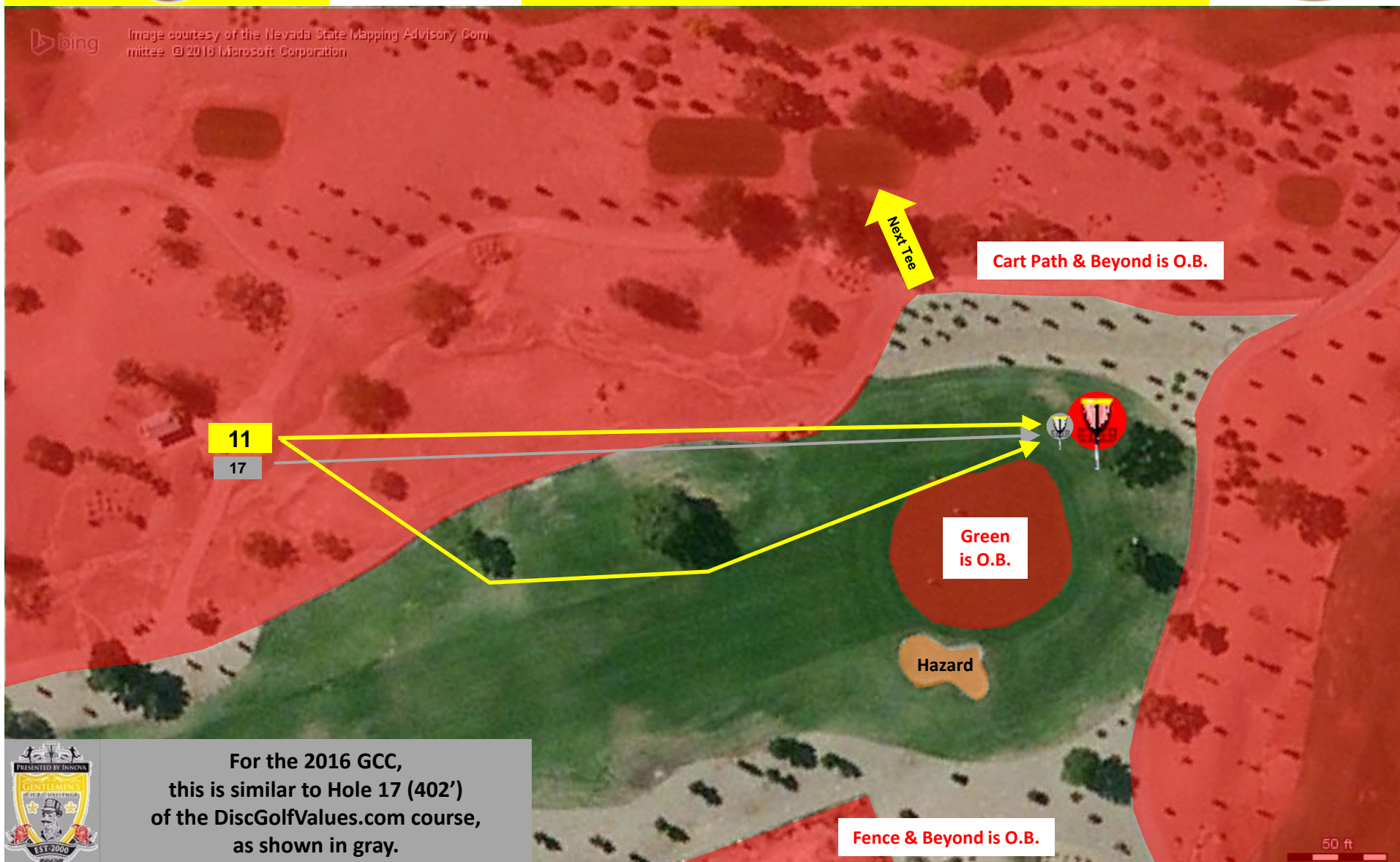
Hole 11

Distance - 410' Par 3



Your Logo/Information here!

If you would like to sponsor the 2017 GCC, please contact the director at lvdgc@cox.net. Your logo/information will be added to this individual map from now until the prior the 2017 GCC.



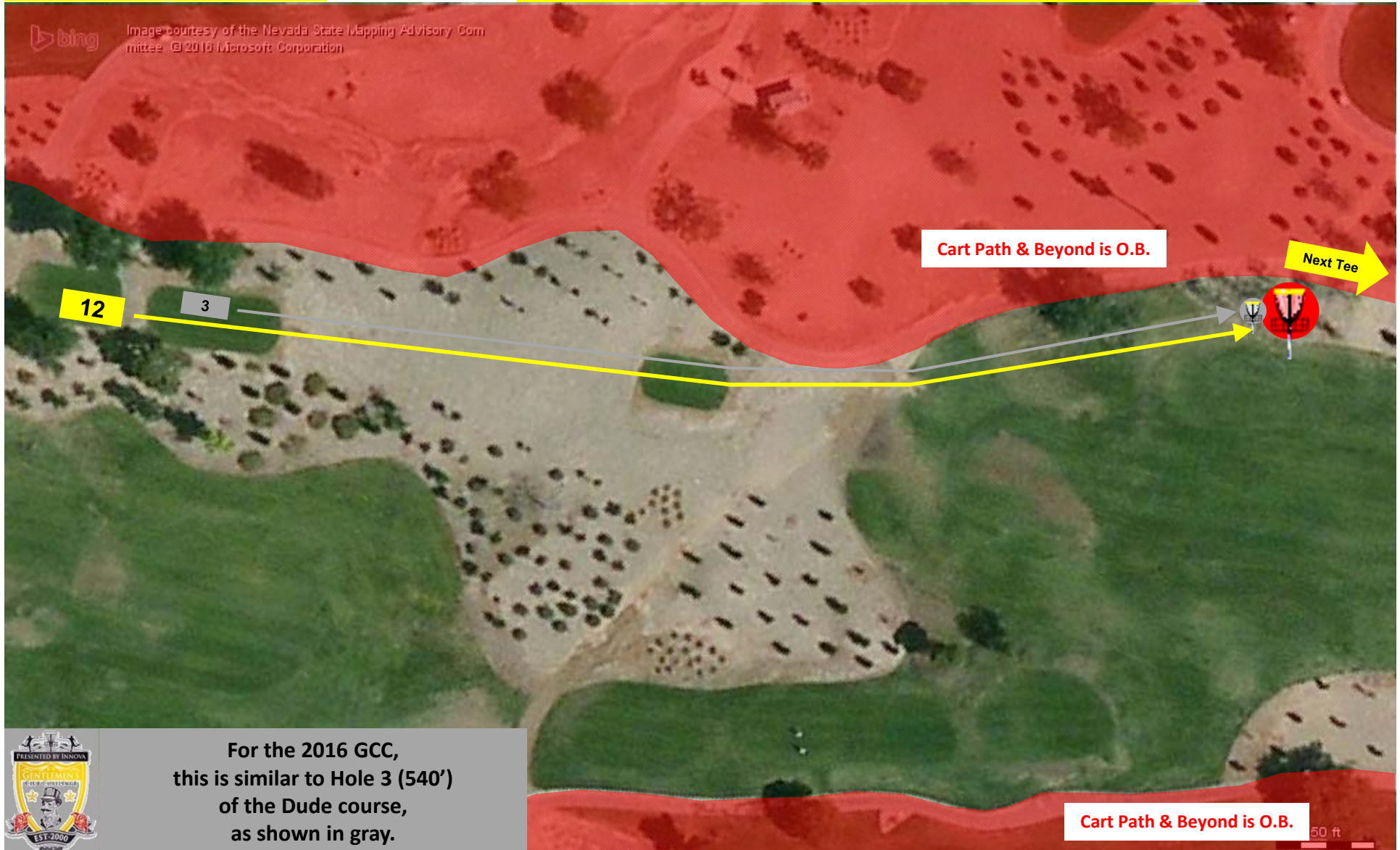
Hole 12

Distance - 597' Par 4



Your Logo/Information here!

If you would like to sponsor the 2017 GCC, please contact the director at lvdgc@cox.net. Your logo/information will be added to this individual map from now until the prior the 2017 GCC.



Hole 13

Distance - 380' Par 3



Your Logo/Information here!

If you would like to sponsor the 2017 GCC, please contact the director at lvdgc@cox.net. Your logo/information will be added to this individual map from now until the prior the 2017 GCC.



Image courtesy of the Nevada State Mapping Advisory Committee © 2016 Microsoft Corporation

Cart Path & Beyond is O.B.

Next Tee

13

6

Cart Path & Beyond is O.B.



For the 2016 GCC, this is similar to Hole 6 (366') of the Dude course, as shown in gray.

50 ft

Hole 14

Distance - 411' Par 3



Your Logo/Information here!

If you would like to sponsor the 2017 GCC, please contact the director at lvdgc@cox.net. Your logo/information will be added to this individual map from now until the prior the 2017 GCC.



For the 2016 GCC, this is similar to Hole 7 (411') of the Dude course, as shown in gray.

Hole 15

Distance - 575' Par 4



Your Logo/Information here!

If you would like to sponsor the 2017 GCC, please contact the director at lvdgc@cox.net. Your logo/information will be added to this individual map from now until the prior the 2017 GCC.



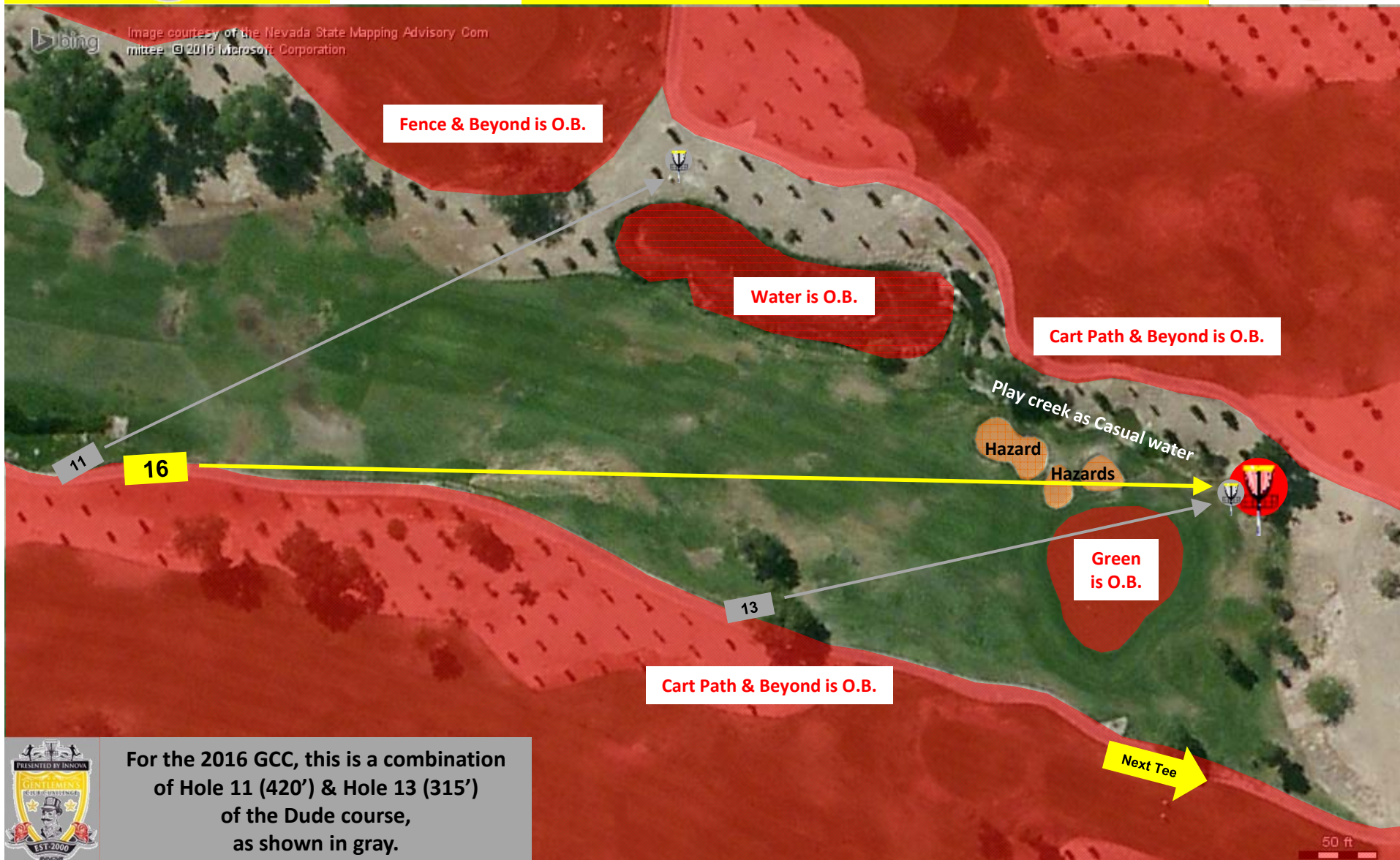
Hole 16

Distance - 702' Par 4



Your Logo/Information here!

If you would like to sponsor the 2017 GCC, please contact the director at lvdgc@cox.net. Your logo/information will be added to this individual map from now until the prior the 2017 GCC.



For the 2016 GCC, this is a combination of Hole 11 (420') & Hole 13 (315') of the Dude course, as shown in gray.

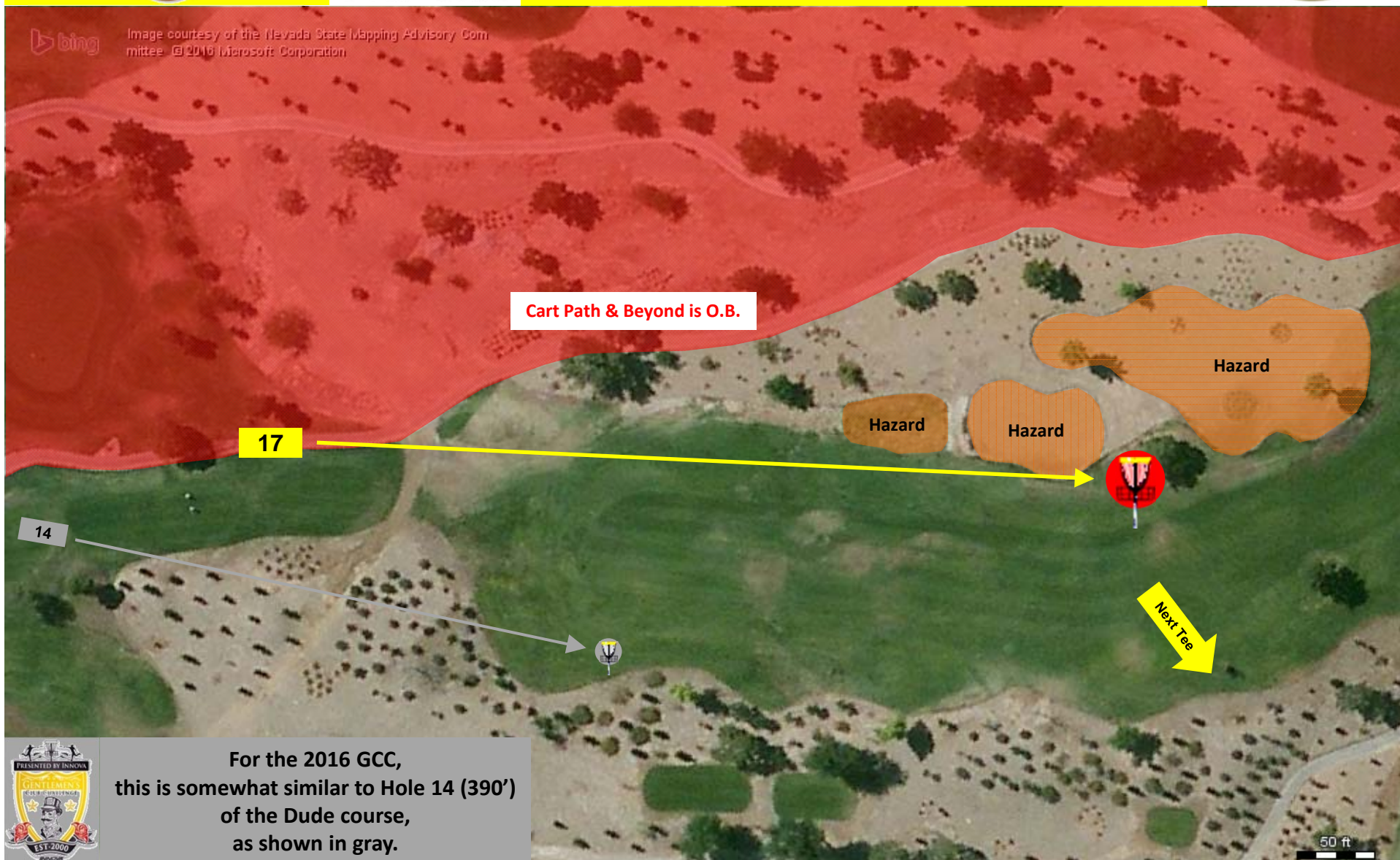
Hole 17

Distance - 585' Par 4



Your Logo/Information here!

If you would like to sponsor the 2017 GCC, please contact the director at lvdgc@cox.net. Your logo/information will be added to this individual map from now until the prior the 2017 GCC.



For the 2016 GCC, this is somewhat similar to Hole 14 (390') of the Dude course, as shown in gray.



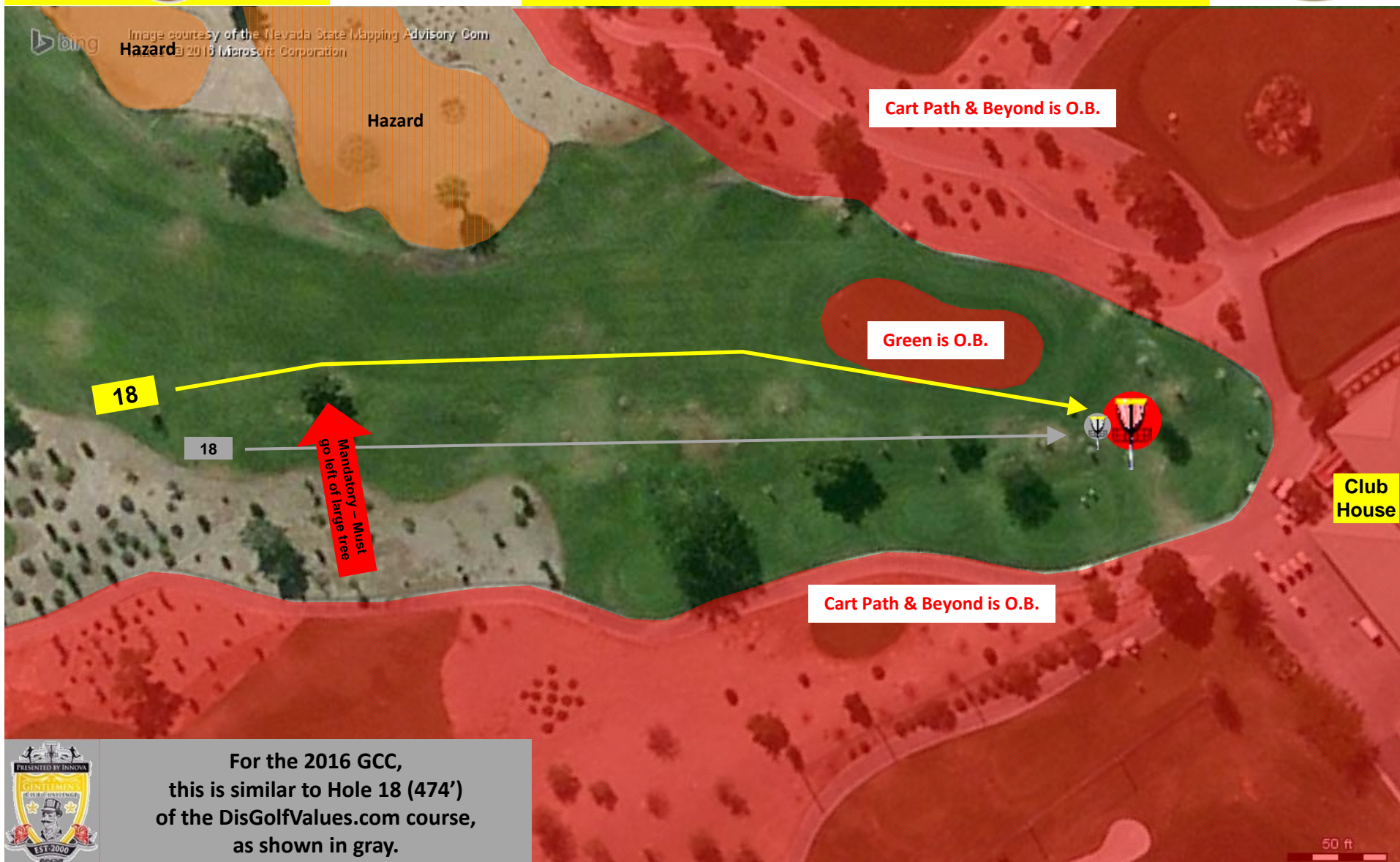
Hole 18

Distance - 495' Par 3



Your Logo/Information here!

If you would like to sponsor the 2017 GCC, please contact the director at lvdgc@cox.net. Your logo/information will be added to this individual map from now until the prior the 2017 GCC.



For the 2016 GCC, this is similar to Hole 18 (474') of the DisGolfValues.com course, as shown in gray.