

EXTERIOR DOOR SCHEDULE

VERIFY ALL DOOR SWINGS WITH FLANS
VERIFY ROUGH OPENINGS WITH MANUFACTURER

①	ENTRY w/ DUEL SIDE LIGHTS	3'-0" X 7'-0"	1
②	TRIPLE PATIO	9'-0" X 7'-0"	1
③	SINGLE PATIO	2'-4" X 7'-0"	1
④	GARAGE	9'-0" X 9'-0"	3
⑤	FIRE RATED	2'-4" X 7'-0"	1

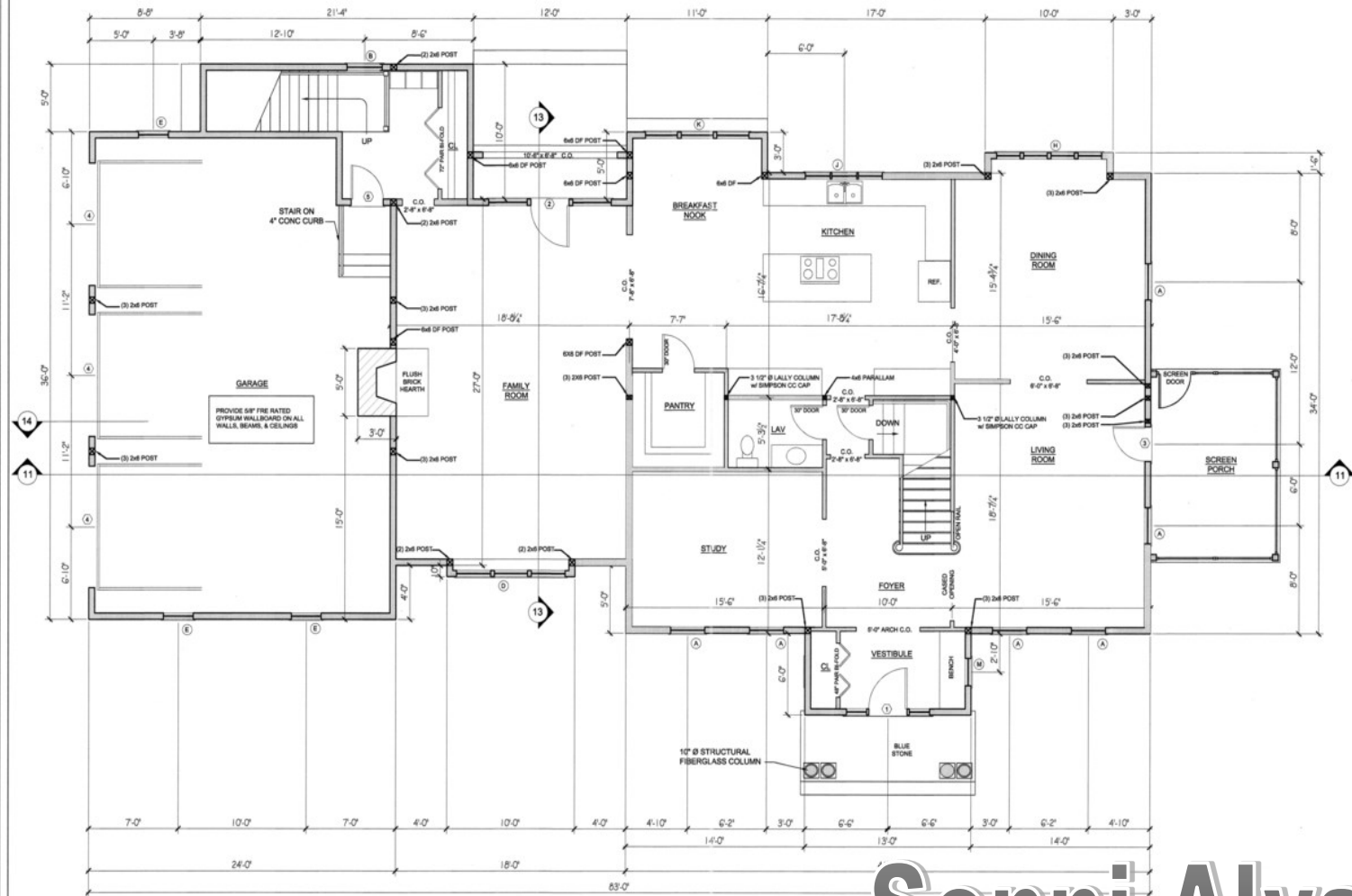
NO.	ROOM	STRUCTURAL REVISION	REASON	DATE

Ownership and use of documents
These documents are not to be
reproduced, stored in a retrieval
system, or transmitted in any form
or by any means, electronic, mechanical,
photocopying, recording, or by any other
information storage and retrieval system,
without the prior written permission of
Campbell Smith Architects, Inc.

CAMPBELL / SMITH
ARCHITECTS, INC.
AT HALLS CORNER
22 DEPOT STREET, DUXBURY, MA 01934-7181

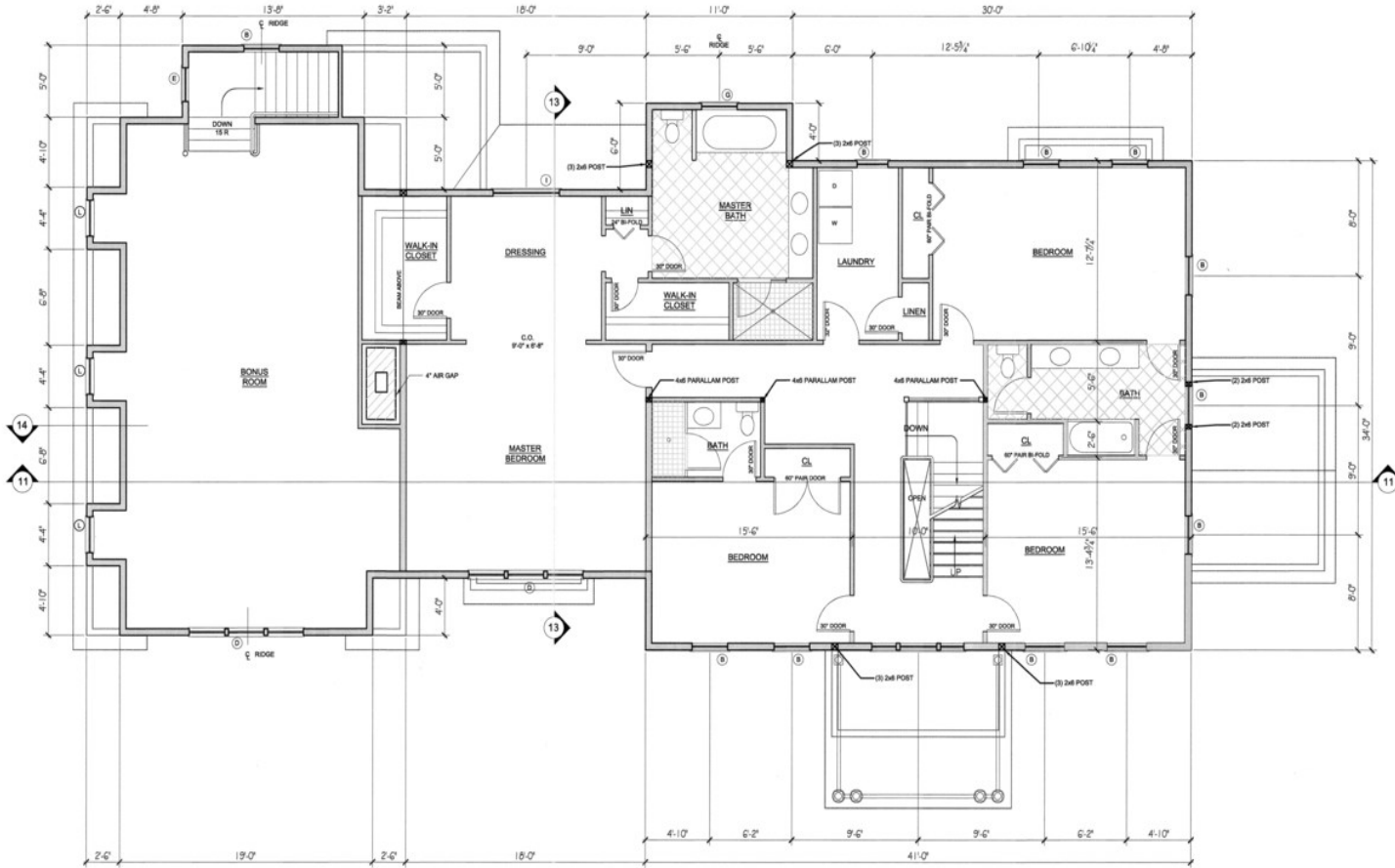
NEW RESIDENCE
SONNI ALYSSA
BOLTON, MA

DATE: 12.10.12
SCALE: AS SHOWN
SHEET NO: 2



FIRST FLOOR PLAN
SCALE: 1/4" = 1'-0"

Sonni Alyssa



SECOND FLOOR PLAN
SCALE: 1/4" = 1'-0"

Sonni Alyssa

CD No.	12-2R12
DATE	12-2R12
SCALE	AS SHOWN
Sheet No.	3
TITLE	NEW RESIDENCE SONNI ALYSSA BOLTON, MA
LOCATION	AT HALLS CORNER 22 DEPOT STREET, DUNELURY, MA 01934-7181
ARCHITECT	CAMPBELL / SMITH ARCHITECTS, INC. AT HALLS CORNER 22 DEPOT STREET, DUNELURY, MA 01934-7181
NO./DATE	BT/
REVISION	STRUCTURAL REVISION
DATE	12.10.12

Ownership and use of documents: Drawings and specifications are instruments of service and are the property of the Architect. These documents are not to be used for any other project, for any other purpose, or for any other parties, than those specifically authorized by contract, without specific authorization by Campbell Smith Architects, Inc.

