

# South Bend Signal Company

## Large Scale Bridge Order Form


Name \_\_\_\_\_  
 Street Address \_\_\_\_\_  
 City \_\_\_\_\_ State \_\_\_\_\_ Zip \_\_\_\_\_  
 Phone \_\_\_\_\_  
 E-mail \_\_\_\_\_

Amount Submitted [ \_\_\_\_\_ ]

Bridge Type: Place [X]	Price
[ ] AC300 Cantilever B&O /C&O	\$100.00
[ ] AC310 Cantilever ATSF	\$100.00

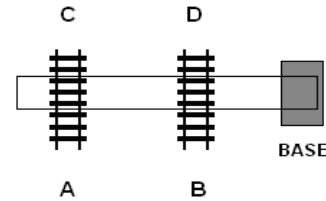
Color: Black [ ] Silver [ ]

Signal Type: (place [X] Signal Head Cost: \$20.00 each

[ ] AC101					
[ ] AC102					
[ ] AC103					
[ ] AC104					
	AC100	AC101	AC102	AC103	AC104

### Signal Layout:

Refer to the different configurations above right to select signal placement. Write the letters below which correspond to where the signals are to be mounted.



AC300: B&O/C&O  
 AC310: ATSF

Cost Calculation: Carry TOTAL PRICE to Amount Submitted above.

ID #	QTY	Bridge Type	Cost	
AC300		ATSF Cantilever Signal Bridge	\$100.00	
AC310		B&O/C&O Cantilever Signal Bridge	\$100.00	
		Signal Type	Each head	
		AC100 Searchlight	\$20.00	
		AC101 Color Light	\$20.00	
		AC102 Tri-Light	\$20.00	
		AC103 Position Light	\$20.00	
		AC104 Color Position Light	\$20.00	
		Sub Total		
		Shipping	\$8.00	
		TOTAL PRICE		

Make Check or Money Order Payable to:

South Bend Signal Co  
 2303 Creek Rd. Niles, MI 49120