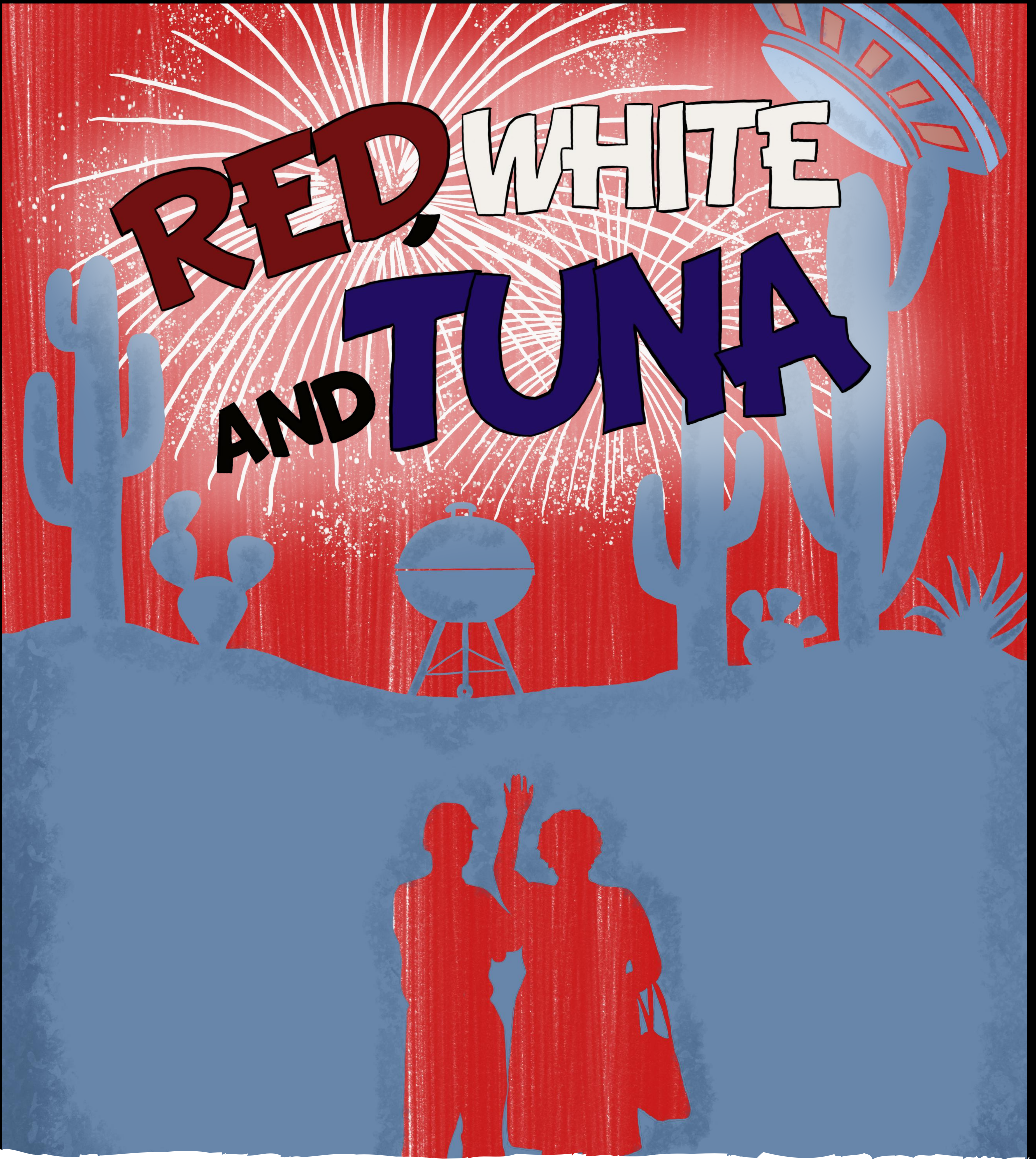


# PLAYBILL

ON PITCH PERFORMING ARTS

#THEATRE MATTERS

# RED, WHITE AND TUNA



FIRST  
COMMUNITY  
BANK

discover  
**davis**  
UTAH'S AMUSEMENT CAPITAL

Rocky Mountain Power  
Foundation

Sylvan  
Learning<sup>sm</sup>

LINK  
EDUCATION  
LEAGUE

HOME<sup>2</sup>  
SUITES BY HILTON

Our Purpose...

# Building our Communities

As a local bank, we build our communities one dream at a time. When you open a checking account, you receive a **\$25 donation token** that can go towards a **bank-sponsored charity**.

Bank Local

🏛️ Get your \$25 Donation token today!



## All the tools you need

Every new personal checking account includes...

- ✓ Free Standard VISA® Debit Card
- ✓ Free Mobile Banking
- ✓ Free Mobile Check Deposit
- ✓ Free Thank You \$25 Give
- ✓ Free Online Banking & Bill Pay
- ✓ Free eStatements with check images
- ✓ Free Check Images
- ✓ \$25 Buy Back of old checks/debit cards from another institution

## Bank-sponsored charities

We work with **16 different charities** in Utah. Check out our website [fcbutah.com](http://fcbutah.com) to learn more!

Support Local

🏛️ Get your \$25 Donation token today!



Unless specified otherwise, customer purchases checks. Other fees such as overdraft, continuous overdraft, etc. may apply. See fee schedule for details. Free \$25 Give to bank-sponsored charities given at the time of account opening. Ask us for details. Bank rules and regulations apply. \$25 for checks and debit cards from another financial institution. Your account will be credited at the time the checks/debit cards are presented.



# RED, WHITE AND TUNA CAST LIST



**DAN TATE:**

ALRES STRUVIE  
DIDI SNAVELY  
PETEY FISK  
MOMMA BYRD  
CHARLENE BUMILLER  
STANLEY BUMILLER  
VERA CARP  
HELEN BEDD  
GARLAND POTEET  
AMBER WINDCHIME



**BRANDON STAUFFER:**

THURSTON WHEELIS  
ELMER WATKINS  
BERTHA BUMILLER  
PEARL BURRAS  
R.R. SNAVELY  
INITA GOODWIN  
LEONARD CHILDERS  
JOE BOB LIPSEY  
STAR BIRDFEATHER



**LEGACY** ★  
**PEDIATRIC DENTISTRY**  
 DR. SCOTT FOLKMAN



3225 West Gordon Ave, Suite G; West Layton

**801.544.3400**

Call for an appointment today!



[www.legacypediatricdentistry.com](http://www.legacypediatricdentistry.com)

**A dentist your kids will be excited to go to!**

- ★ Awesome "outer-space" themed office & FUN kid-friendly staff
- ★ TV's above chairs streaming **NETFLIX** for kids
- ★ Specialist in infants, children, teens, special-needs children/adults
- ★ Full range of services, including sedation
- ★ Most insurance accepted, please call with questions
- ★ Check out our Reviews on **Google** & **facebook**.

**\*New Patient Gift**



**\$5 Gift Card**  
of your choice!

\*Must present this coupon on your first visit to receive gift card. Not valid with free Toddler Exam.

**No Insurance Special**

**\$79**

Includes exam,  
X-rays, cleaning,  
& fluoride.

Insurance will be billed, if available, maximum out-of-pocket.

**free toddler exam**  
for kids 2 & under



No out-of-pocket expense.  
Insurance will be billed, if available.



**LEGACY** ★  
**PEDIATRIC DENTISTRY**  
 DR. SCOTT FOLKMAN

CELEBRATE THE MAGIC

TREASURE THE MEMORIES



CONTACT FOR A FREE NO OBLIGATION QUOTE!

ashleyramsey@d2travel.com  
760-994-5840

*Destinations  
To Travel*

WITH ASHLEY  
RAMSEY



ON PITCH PERFORMING ARTS PRESENTS:

RED, WHITE  
AND TUNA

Written by:

*Faston Williams, Ed Howard, and Joe Sears*

Direction

*Heather Jackson*

Original Costume Design

*Stacey Haslam*

Light Design

*Josh Rice*

Sound Design/Booth

*Heather Jackson*

Set Painter

*Carole Taylor*

Costume Run Crew

*Teresa Howell, Caitlin Olsen, Jenn Tate*

OPPA! STAFF

Executive Director

*Brandon Stauffer*

Admin. Coordinator

*Leslie Barrett*

Education Director

*Ashley Ramsey*

Production Management

*Kennedy Miller*

Costume Shop Manager

*Amanda Larsen*

“Red, White and Tuna” is presented by arrangement with Concord Theatricals on behalf of Samuel French, Inc. [www.concordtheatricals.com](http://www.concordtheatricals.com)  
The videotaping or other video or audio recording of this production is strictly prohibited

Utah  
**REAL**  
Estate.homes

**MATT HAWKES**  
**REAL ESTATE**  
— 801.869.0268 —



**WE SOLD ANOTHER  
HOME IN YOUR AREA!**

**Visit**

***UtHomeValues.com***

**for your Home Value!**

*or scan QR code*



real  
REAL BROKER LLC

# DIRECTOR'S NOTE

When the 2024 season was announced last year and Red, White, and Tuna was included, I immediately knew I wanted to be on the team. After the incredible experience I had with Tuna Christmas last year, I didn't want to miss out on the adventure this show would be.

And I was absolutely right. This show has been a fantastic experience and so much of that is due to the talent, hard work, creativity, and friendship of Dan and Brandon. This experience and this show would not be the same without these two wonderful people. I thank them with my whole heart.

I also want to thank my family for supporting my passion and sacrificing hours with me so I could focus on the show. I love you! Thank you to On Pitch Performing Arts for the opportunity to bring this show to the stage. And finally, thanks to all of you for attending. Happy 4th, Y'all!

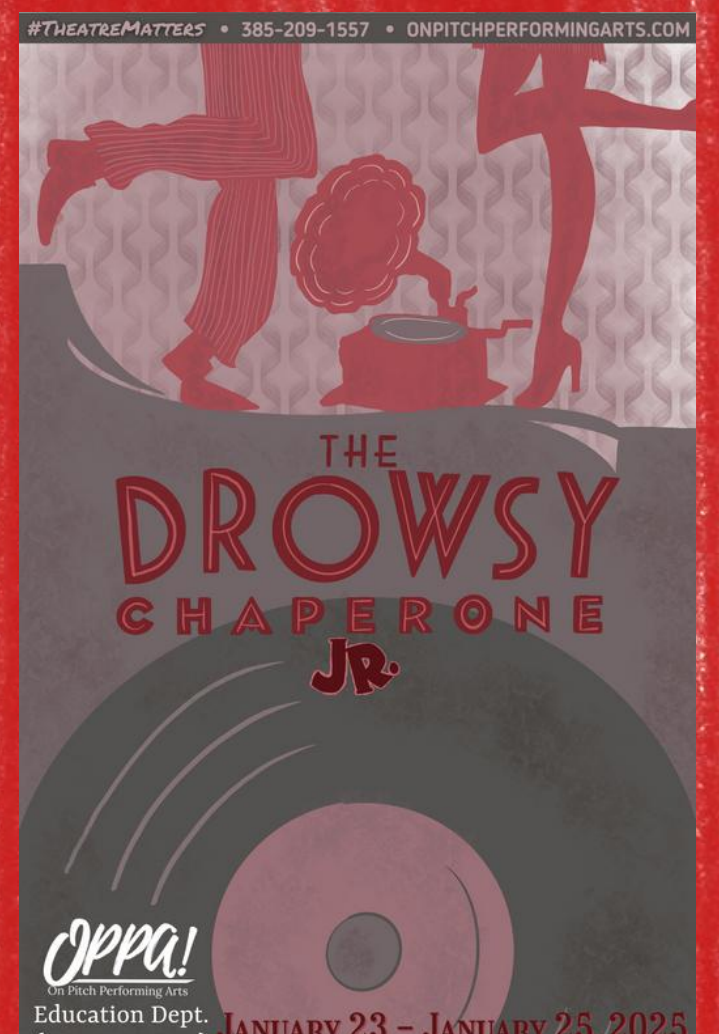
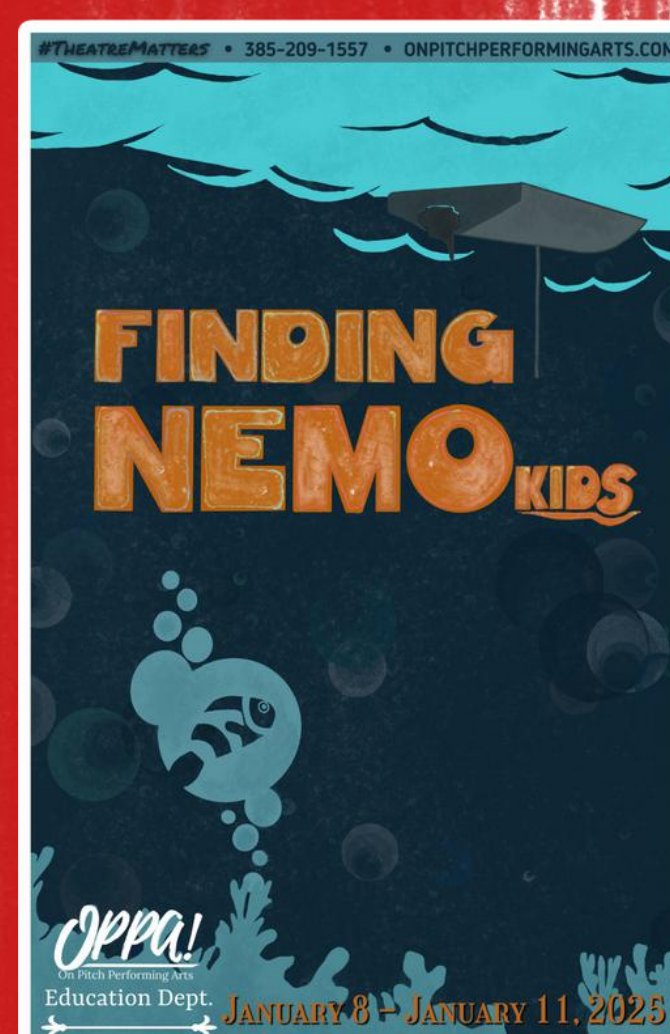
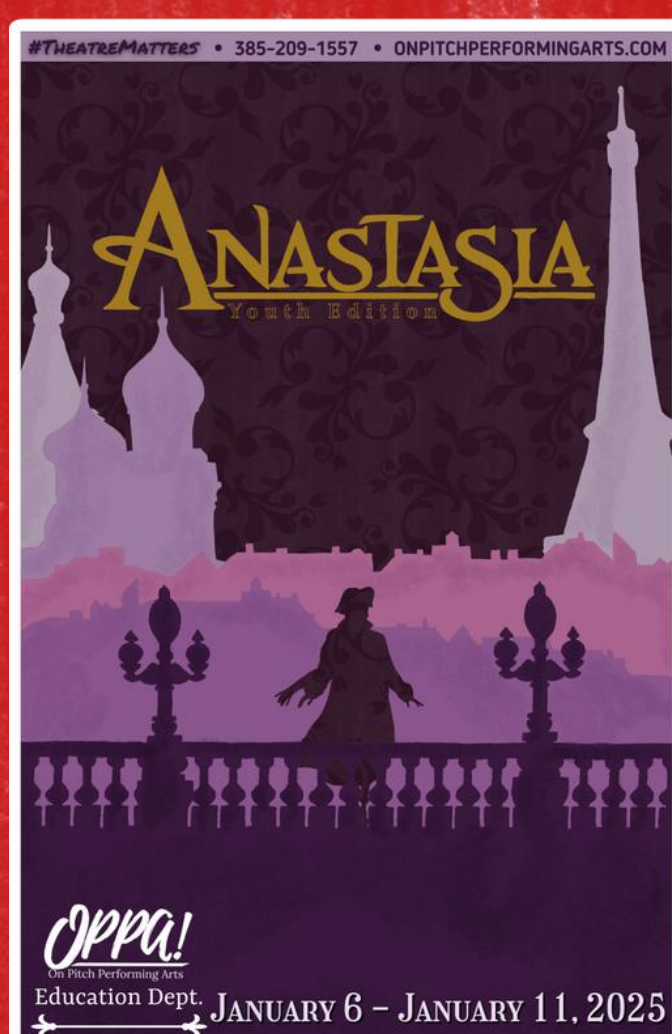
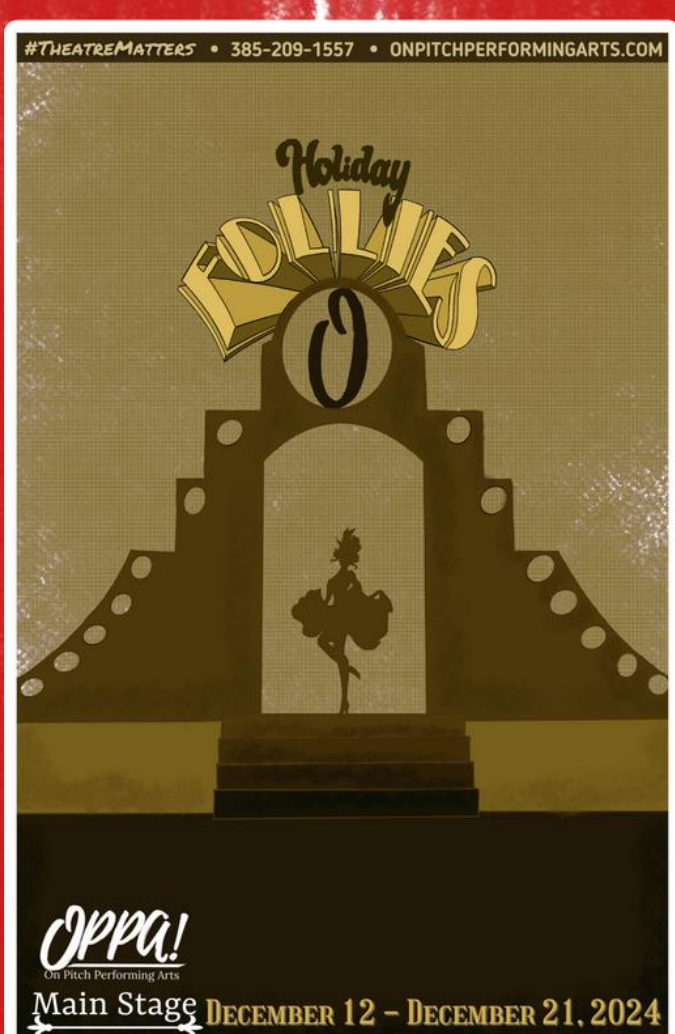
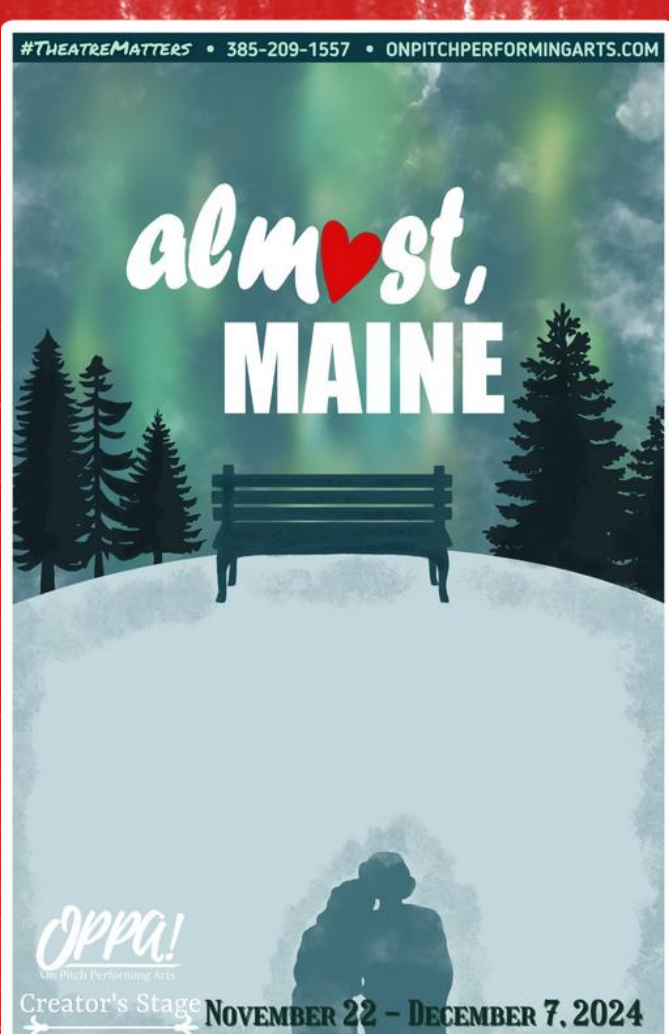
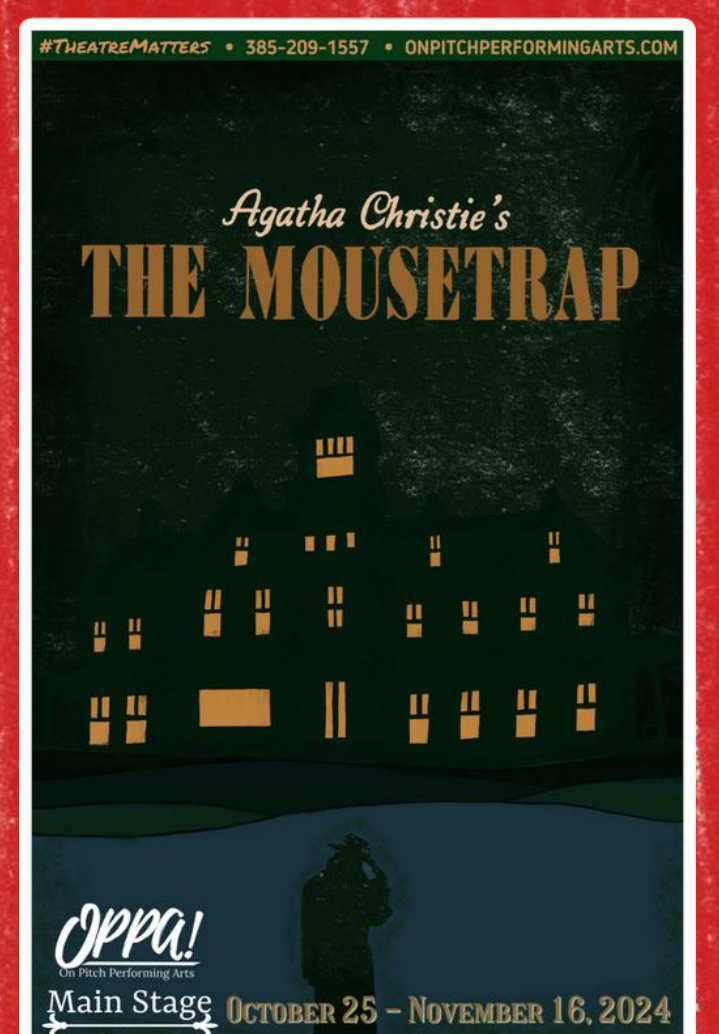
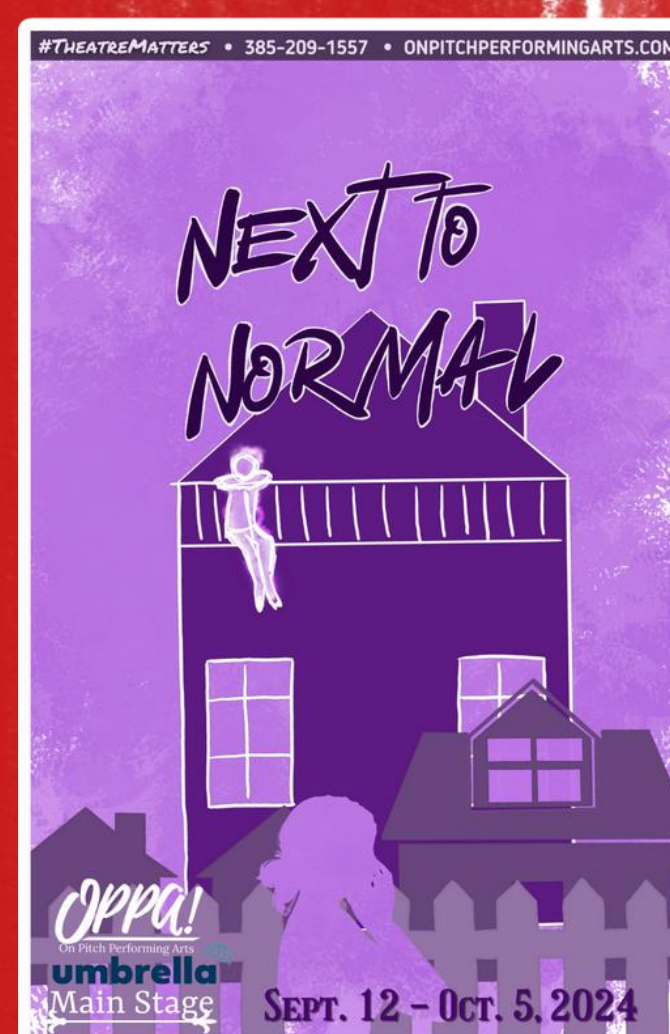
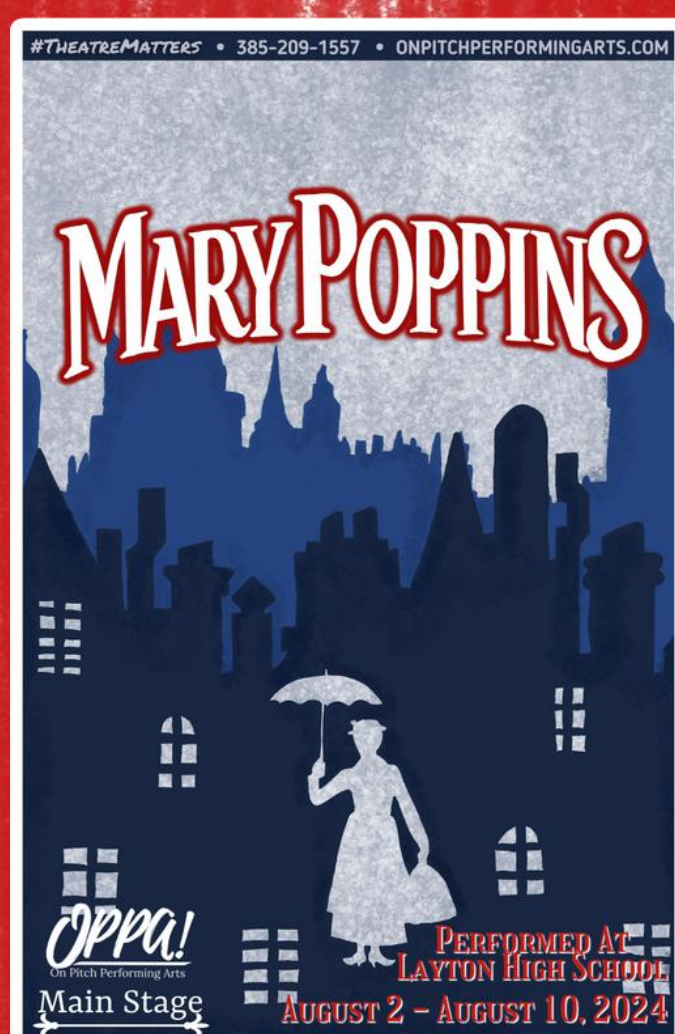
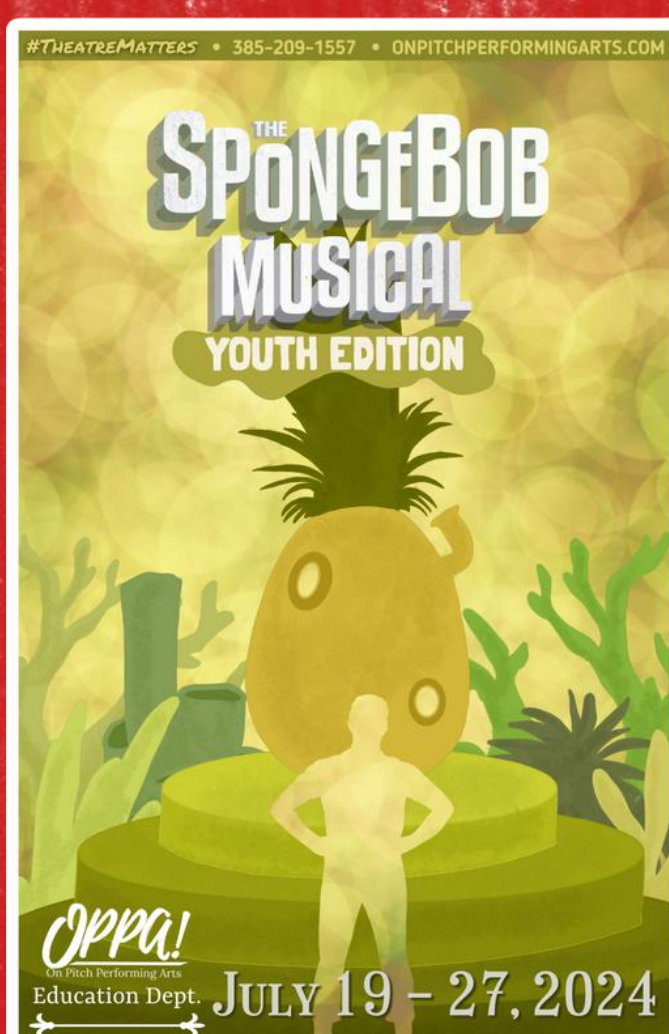
*Heather Ann Jackson*

## FROM THE ACTORS

We want to thank everyone that has helped in this process. A special shout out to Heather Ann Jackson who not only brings this show to life from the booth but as the director made this show what it is! Thank you Heather, for being you, and for always laughing at us! One more shout out to our amazing team of dressers, we could not do this without them. THANK YOU!

*-Dan and Brandon*

2024





# OPENING THE CAN ON TUNA

THE TUNA PLAYS HAVE ALWAYS BEEN A LOVE LETTER TO TEXAS WRITTEN WITH A POISONED PEN. IN THE 1980S, JASTON WILLIAMS, JOE SEARS, AND ED HOWARD WROTE THESE PLAYS IN REACTION TO THE RISE OF THE MORAL MAJORITY, A POLITICAL ORGANIZATION FOUNDED IN 1979 BY JERRY FALWELL, SR., ASSOCIATED WITH THE CHRISTIAN RIGHT AND THE REPUBLICAN PARTY. THE TUNA PLAYS ARE FIERCE AND FUNNY SATIRES OF LIFE IN TEXAS AND ALL AROUND THIS COUNTRY. THEY ARE BRUTAL, AND SADLY, THE TARGETS THAT ARE MOCKED IN THESE PLAYS HAVE ONLY GOTTEN A STRONGER FOOHOLD IN BOTH TEXAS BEINGS AND THE UNITED STATES. THEY FEATURE FLAWED, SOMETIMES TRULY HORRIBLE, FUNNY HUMANS DOING THE BEST THEY CAN AND SOMETIMES STILL MISSING THE BIGGER PICTURE.

SATIRE IS ONE OF THE FEW PLACES IN OUR SOCIETY WHERE WE CAN SPEAK TRUTH TO POWER AND LAUGH. FROM MARK TWAIN TO SATURDAY NIGHT LIVE, WE DELIGHT IN POKING FUN AT THE POWERFUL AND UNCOMFORTABLE FORCES IN OUR LIVES. A TUNA CHRISTMAS LIVES IN THIS LONG TRADITION, LAMPOONING THE LIVES OF THE SO-CALLED MORAL MAJORITY, BUT LEAVING US TO QUESTION: WAS THIS REALLY WRITTEN IN 1989, OR JUST LAST WEEK?

THESE CHARACTERS ARE UNHINGED, BUT WHY DO I FEEL LIKE I KNOW THEM?

SHOULD WE LET THIS KEEP ON HAPPENING?

IN THIS THIRD EDITION OF THE GREATER TUNA SERIES, AN IMPENDING HIGH SCHOOL REUNION BRINGS OUT THE BEST — AND MORE OFTEN THE WORST — IN THE CITIZENS OF TUNA. WHO WILL BE CROWNED THE REUNION QUEEN? NASTY SPITFIRE TALK AMONG THE COMPETITORS, WHOSE EXTRAVAGANT OPINIONS ARE BASED ON RUMOR AND SUSPICION, STIRS UP COMEDIC MOMENTS THAT GET YOU CHUCKLING BEFORE YOU REALIZE WHAT'S HAPPENED. LINES STEEPED IN SARDONIC SYRUP POUR OUT OF CHARACTERS' MOUTHS. THROUGH SUBTERRANEAN COMMENTS ON SIMPLEMINDED RELIGIOUS ORTHODOXY AND COMMUNITY PRESSURE, RED, WHITE AND TUNA EXPOSES THE INDISCERNIBLE SNARE OF INFECTIOUS SOCIAL OBLIGATIONS AND APPEARANCES.



DAN TATE AS DIDI



# LINK EDUCATION LEAGUE

Helping students become:

CREATIVE

COLLABORATIVE

COMPASSIONATE

CRITICAL THINKERS

What does learning at Link Education League look like?

Scan the QR code to see it in action!



LEARN MORE & APPLY AT [LINKEDUCATIONLEAGUE.COM](http://LINKEDUCATIONLEAGUE.COM)



EDUCATION  
FOR THEIR FUTURE  
NOT OUR PAST

NOW ENROLLING!

**THE SPONGEBOB  
MUSICAL  
YOUTH EDITION**



# SATIRE OUT OF THE CAN

AS LONG AS POLITICS HAS EXISTED, SO HAS ITS MOCKERY. GOING BACK THOUSANDS OF YEARS TO 400 BCE, WHEN PLAYWRIGHT AND "FATHER OF COMEDY" ARISTOPHANES WROTE ABOUT RELIGION AND VARIOUS POLITICAL FIGURES IN ATHENS, ARTISTS AND WRITERS HAVE USED THEIR MEDIUMS TO HUMOROUSLY COMMENT ON THE STATE OF THEIR GOVERNMENT AND TOPICAL AFFAIRS. SATIRE USES HUMOR AND EXAGGERATION TO COMMENT ON AND RIDICULE CURRENT EVENTS OR PUBLIC FIGURES, OFTEN POINTING OUT HYPOCRISY, STUPIDITY, OR LOGICAL FALLACIES. OVER HUMAN HISTORY, THE MAKING, DISTRIBUTION, AND RECEPTION OF SATIRICAL WORKS HAVE REFLECTED THE STATE OF THE WORLD AND THE GOVERNMENT'S RELATIONSHIP TO THE PUBLIC.

IN AMERICA, SATIRE CAN BE TRACED BACK TO THE EARLY 1700S, WHEN THE COLONIES WERE SEEKING INDEPENDENCE FROM BRITAIN. AT THIS TIME, MOST SATIRE TOOK THE FORM OF POLITICAL CARTOONS, WHICH COULD BE ENJOYED BY BOTH THE UPPER CLASS AND THE LARGER MAJORITY OF ILLITERATE WORKING-CLASS AMERICANS. THESE CARTOONS PERMEATED AMERICAN AND EVEN BRITISH CULTURE, THEIR WIDE CIRCULATION PLANTING THEM NOT ONLY IN NEWSPAPERS, BUT ON FLYERS AND EVEN CHINAWARE, PROVIDING REVOLUTIONISTS THE OPPORTUNITY TO SUBTLY SHOW THEIR ALLEGIANCE TO DINNER GUESTS. THE CIRCULATION OF POLITICAL OPINION AS ENTERTAINMENT BROUGHT ATTENTION TO THE STATE OF THE GOVERNMENT, EVENTUALLY RALLYING THE SUPPORT NEEDED TO WIN THE REVOLUTIONARY WAR. THE CARTOONS NOT ONLY IMPACTED THE MAJORITY OPINION ON GREAT BRITAIN'S RELATIONSHIP WITH THE COLONIES, BUT INFLUENCED AMERICAN POLITICS INTO THE PRESENT DAY; CARTOONIST THOMAS NAST POPULARIZED THE DONKEY AND ELEPHANT ICONOGRAPHY OF THE DEMOCRATIC AND REPUBLICAN PARTIES THANKS TO HIS CARTOONS IN HARPER'S WEEKLY. WITH COUNTLESS EXAMPLES OF SATIRE ENTERING MAINSTREAM CULTURE THROUGHOUT HISTORY, IT'S CLEAR THAT THE CONTROVERSIAL HUMOR STICKS WITH US. BUT HOW DO WE GAUGE IF SATIRE IS GOING TOO FAR?

TO AN EXTENT, SATIRE IS INHERENTLY INCENDIARY, AS IT SEEKS TO EXPLORE OFTEN DIVISIVE TOPICS & PUSHES THE BOUNDARIES OF ACCEPTABILITY IN ORDER TO MAKE A STATEMENT IN AN ATTENTION-GRABBING AND ENTERTAINING WAY. "ROBUST SATIRE IS OFTEN A

SIGN OF CRISIS AND THE ABILITY TO SHARE AND CONSUME IT IS A SIGN OF A FREE SOCIETY," SAYS SOPHIA MCCLENNEN, PROFESSOR OF INTERNATIONAL AFFAIRS AT PENN STATE. "WE SEE SATIRE EMERGE WHEN POLITICAL DISCOURSE IS IN CRISIS AND WHEN IT BECOMES IMPORTANT TO USE SATIRICAL COMEDY TO PUT POLITICAL PRESSURE ON MISINFORMATION, FOLLY, AND THE ABUSE OF POWER." THAT BEING SAID, THE PUBLIC RECEPTION TO SATIRICAL WORKS HAS VARIED WILDLY OVER TIME, DEPENDING ON THE LARGER CONTEXT OF WHAT IS GOING ON IN THE WORLD.

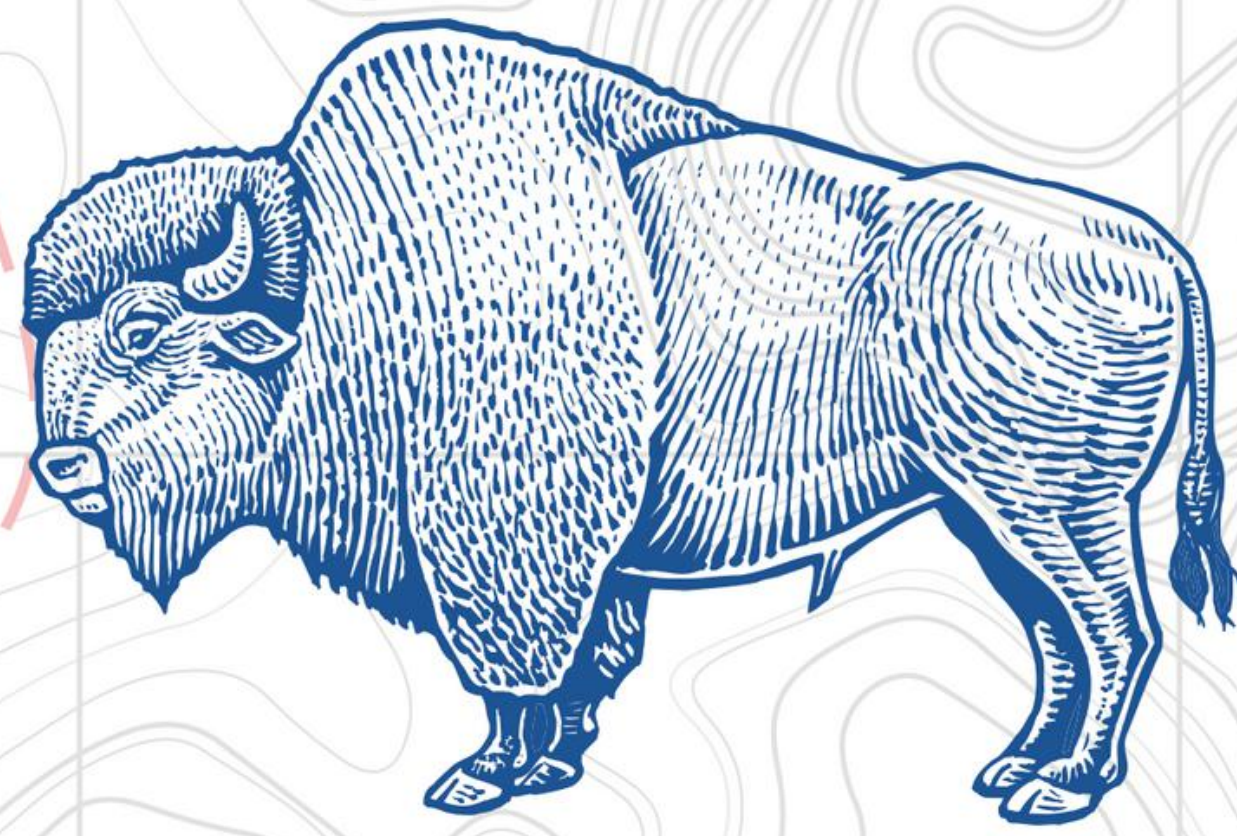
SATIRE PLAYS AN INTERESTING ROLE IN OUR CULTURE TODAY; WITH INCREASING CONVERSATIONS AROUND SYSTEMS OF INEQUALITY AND WHO HAS THE RIGHT TO TELL WHICH STORIES (OR MAKE WHICH JOKES) AND POLITICAL AND SOCIAL DIVISIONS COMING TO A FEVER PITCH, THE FINE LINE BETWEEN EFFECTIVE SATIRE AND SATIRE THAT GOES TOO FAR IS GETTING THINNER AND HARDER TO ANTICIPATE.

SATIRE STAPLES OF MODERN AMERICAN CULTURE HAVE BEEN STRUGGLING TO STAY RELEVANT IN TODAY'S ENTERTAINMENT LANDSCAPE. LATE-NIGHT TELEVISION, MARKED BY ITS TOPICAL POLITICAL HUMOR, HAS BEEN SEEING LOWER AND LOWER RATINGS. THERE ARE A HANDFUL OF REASONS FOR THIS: THE GENRE'S FORMAT-INCOMPATIBILITY WITH STREAMING SERVICES, AN OVERSATURATION OF SIMILAR SHOWS COMMENTING ON THE SAME ISSUES, A HEIGHTENED FIXATION ON POLITICS RATHER THAN HUMAN INTEREST. ONE NOTABLE REASON FOR THE GENRE'S DECLINE THAT IS DISCUSSED LESS, HOWEVER, IS THE WRITER AND AUDIENCE'S ABILITY TO EVOLVE SATIRE TO WORK IN THE CURRENT CLIMATE.

SATIRE IS A POWERFUL FORM OF POLITICAL AND SOCIAL COMMENTARY, BUT ITS EFFICACY HEAVILY RELIES ON SATIRE WRITERS AND ARTISTS' ABILITIES TO ANTICIPATE HOW CURRENT EVENTS WILL INFORM THE AUDIENCE RECEPTION. SOME SATIRES OF THE PAST, LIKE A TUNA CHRISTMAS, PROVIDE COMMENTARY FOR ISSUES STILL RELEVANT TODAY, EVEN IF THE WAY WE'VE COME TO TALK ABOUT THOSE ISSUES HAS SHIFTED. THE QUESTION REMAINS THEN: CAN WE ADAPT SATIRICAL FORMATS OF THE PAST TO REFLECT TODAY'S CLIMATE, OR CAN SATIRE ONLY BELONG IN THE PRESENT?

BRANDON STAUFFER AS BERTHA





## **FOUND IN DAVIS COUNTY**

**Intermountain expertise with Davis County convenience is now available right in your backyard.**

**Layton Hospital provides a comprehensive complement of services, including:**

### **EMERGENCY**

Trauma Level III  
Stroke Receiving Center  
Observation Unit  
TeleHealth Integration  
Accelerated Care Model

### **WOMEN'S HEALTH**

Labor & Delivery  
Simply Birth  
NICU  
Outpatient Lactation  
24/7 Laborist Coverage

### **SURGICAL**

Robot Assisted Surgeries  
Orthopedics  
General Surgery  
Same Day/Endo/GI  
GYN Surgeries

To learn more about our services or find a provider, visit  
*[LaytonHospital.org](http://LaytonHospital.org)*



**Intermountain<sup>®</sup>  
Layton Hospital**



# HOME 2 SUITES LAYTON


803 Heritage Park Blvd  
Layton, UT 84041

## OUR HOTEL FACILITIES

---

- ✓ Extended Stay Hotel
  - ✓ Swimming pool
  - ✓ Kitchenettes
  - ✓ 24 Hour Fitness Room
  - ✓ Outdoor BBQ Grills
  - ✓ Much More
- 

CONTACT US

 801-820-9222

# KEEP MOVING FORWARD with Sylvan!



## SYLVAN HAS EXACTLY WHAT YOU NEED

More than 7 million parents have trusted Sylvan to deliver results. No matter what your family's needs are, we have solutions to help. And we've adapted to the new ways kids are learning.

### IN CENTER TUTORING

Personalized support from our great teachers!

- Get personalized attention with in person, face-to-face sessions
- Get guided support that is personalized to your child.
- Work on skill gaps
- Get ahead and master new skills

**Mention "OPPA" for a discount** **20%**

### Online Classes

Same great teachers, from the comfort of your home.

- Teachers lead live, small group classes ( 1 Teacher to 2 students)
- Skills and confidence growth to be ready for the next school year
- Interactive and fun activities to keep kids engaged and spark a love of learning

**Classes start with a monthly as low as \$299/mo.**

### Homework Support

Valid only at Sylvan Learning of Layton or Bountiful

Core 4 ( up to 4 hrs. a month)  
Basic 8 ( up to 8 hrs. a month)  
Super 16 ( up to 16 hrs. a month)

**Monthly packages starting @ \$200 a month**

### Sylvan of Layton

575 N Main Street

**801-543-4400**

layton.ut@sylvanlearning.com

### Sylvan of Bountiful

845 S Main Street Ste. B5

**801-543-4400**

Layton.ut@sylvanlearning.com

# Our exclusive Creators Club

## **PATRON:**

Amanda Larsen

Amy Shaffer

Danielle Bendinelli

Dave Green

Michelle Green

Eric Ludlow

Glenda & Rob Smith

Heather Ann Jackson

Joshua Rice

Kelly Silvester

Leslie Barrett

Mandie Harris

Teresa Howell

Jeff Duncan

## **SUPPORTER:**

Anne Jones

Ashley Ramsey

Terry Davis

Caitlin Olsen

Chelsea Morris

Matt Higgins

Natalee Stuart

Sommer Ellsworth

Tyler Neil

Anonymous

## **ADMIRER:**

Chris & Jen Morgan

## **ENTHUSIAST:**

Rachel Helwig

Dan Tate

Creator Club Members are our most passionate supporters, and their monthly giving ensures that our mission will continue.

The support we receive from the Creators Club allows us to create children's theatre, community theatre, produce new works, and expand the arts in our community.

Select perks may include: Priority performance seating, Exclusive Creator Club events, Advance ticketing opportunities, Autographed cast memorable, gift shop discounts and VIP invitations.

All club members receive complimentary access to select performances of shows in our Creator's Stage series.

**OPPA!**  
On Pitch Performing Arts

**Thank You is never enough.**



# OPENING THE CAN ON THE CHARACTERS



DAN TATE AND BRANDON STAUFFER

# WHO TYPED THE TUNAS?



## ED HOWARD

IS THE CO-AUTHOR OF THE PLAYS GREATER TUNA, A TUNA CHRISTMAS, RED, WHITE AND TUNA AND TUNA DOES VEGAS. HE ALSO CO-AUTHORED SPLENDORA BASED ON THE NOVEL BY EDWARD SWIFT, AND THE BOOK AND LYRICS OF THE MUSICALS THE BODY SNATCHERS AND BOY PROBLEMS. OTHER WORKS INCLUDE THE SUMMER OF DAISY FAY AND THE GLORY GETTER, BOTH BASED ON DAISY FAY AND THE MIRACLE MAN, THE FIRST NOVEL BY FANNY FLAGG; HAMLET, TEXAS, A MODERN DAY RETELLING OF SHAKESPEARE'S HAMLET SET IN WEST TEXAS ON THE RANCH OF AN OIL TYCOON; AND BOOK AND LYRICS FOR THE TEMPEST TOSSED, A MUSICAL COMEDY SPOOF OF THE THE TEMPEST FEATURING SHAKESPEARE AND THE MUSES. THE TUNA TRILOGY PLAYS WERE AWARDED THE LOS ANGELES DRAMALOGUE AWARD, THE SAN FRANCISCO BAY AREA CRITICS AWARD, AND RECEIVED HELEN HAYES AWARD NOMINATIONS. AFTER ITS CRITICALLY ACCLAIMED BROADWAY DÉBUT, A TUNA CHRISTMAS WAS PUBLISHED IN BEST PLAYS OF 1995 AND GARNERED FOR MR. SEARS A TONY NOMINATION.



## JASTON WILLIAMS

IS CO-AUTHOR AND CO-STAR OF GREATER TUNA AND THE WILDLY SUCCESSFUL TUNA TRILOGY. MR. WILLIAMS HAS BEEN CREATING THE CITIZENS OF TUNA SINCE 1982. HE HAS RECEIVED WASHINGTON DC'S HELEN HAYES AWARD NOMINATIONS FOR A TUNA CHRISTMAS AND RED, WHITE AND TUNA AS WELL AS THE SAN FRANCISCO BAY AREA CRITICS AWARD FOR GREATER TUNA. MR. WILLIAMS RECEIVED THE L.A. DRAMALOGUE AWARD FOR BOTH GREATER TUNA AND A TUNA CHRISTMAS AND THE TEXAS GOVERNOR'S AWARD FOR OUTSTANDING CONTRIBUTION TO THE ARTS BY A NATIVE. IN HIS HOMETOWN OF AUSTIN, TEXAS, HIS ACTING CREDITS ARE EXTENSIVE, MOST RECENTLY APPEARING AT ZACHARY SCOTT THEATRE IN THE LARAMIE PROJECT. HE WORK-SHOPPED HIS AUTOBIOGRAPHICAL ONE-MAN SHOW I'M NOT LYING TO CRITICAL ACCLAIM AT AUSTIN'S STATE THEATRE OF TEXAS AND RETURNED IT THERE FOR A FULL PRODUCTION IN FEBRUARY OF 2004 AS WELL AS A BENEFIT PERFORMANCE AT WASHINGTON DC'S KENNEDY CENTER. HIS LATEST AUTOBIOGRAPHICAL PLAY COWBOY NOISES PREMIERED IN AUSTIN IN FEBRUARY 2008 TO CRITICAL ACCLAIM.



## JOE SEARS

IS CO-AUTHOR AND CO-STAR OF GREATER TUNA AND THE WILDLY SUCCESSFUL TUNA TRILOGY. MR. SEARS HAS TOURED EXTENSIVELY WITH TUNA TRILOGY PRODUCTIONS SINCE 1982. HIS SIXTH TOUR OF A TUNA CHRISTMAS INCLUDED HIS BROADWAY DEBUT FOR WHICH HE RECEIVED A 1995 TONY AWARD-NOMINATION FOR BEST ACTOR IN A PLAY. HE ORIGINATED GREATER TUNA OFF-BROADWAY WHEN THE SHOW PREMIERED IN 1982 AND HAS PERFORMED IN THE HIGHLY SUCCESSFUL NATIONAL TOURS AND STARRED IN THE NORMAN LEAR SPECIAL OF GREATER TUNA WHICH AIRED ON HBO. MR. SEARS HAS BEEN ACTING PROFESSIONALLY FOR MORE THAN 30 YEARS. HE RECEIVED THE 1993 LOS ANGELES DRAMALOGUE AWARD FOR BEST ACTOR IN A TUNA CHRISTMAS. HE PERFORMED IN THE MUSICAL COMEDY THE FANTASTICKS AT FORD'S THEATRE IN WASHINGTON, DC AND AT CASA MAÑANA THEATRE IN FORT WORTH. HE MADE HIS MOVIE DEBUT WITH TOMMY LEE JONES AND MATT DAMON IN THE GOOD OLD BOYS. MR. SEARS ALSO OWNS AND OPERATES CODY STAGE, A SUMMER STOCK THEATRE COMPANY IN CODY, WY.