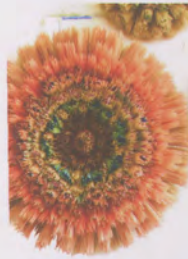


Rooibos Tea



街头艺术家



01 ONLY★  
CS1604  
Nm 27000

14G\*1P

Hp1961  
JACQUARD

47%Nylon 44%Viscose 9%Metallised Fibre



# STREET ARTISTS





STOCK  
 MOSS  
 02  
**MOSS\*** 14G\*1P  
 CS0876  
 Nm 58000  
 91%Nylon 9%Spandex



STOCK  
 TOPIA  
 03  
 16G\*1P **TOPIA\***  
 FY4085  
 Nm 31700  
 51%Nylon 49%Viscose



STOCK  
 TOPIA  
 04  
 14G\*1P **ELLIE**  
 FY8521  
 Nm 24000  
 62%Viscose 38%Nylon



STOCK  
 TOPIA  
 05  
**VELOUR** 7G\*1P  
 FY7599  
 Nm 7000  
 100%Nylon



STOCK  
ALPACA

06  
**MACY** 3G\*1P  
FY7455  
Nm 7500  
78% Mercerized Wool  
20% Nylon 2% Spandex



STOCK MOSS

STOCK MOSS

07  
**SYNA**  
3G\*1P Nm 2300 FY6446  
5G\*1P Nm 4800 FY6447  
100% GRS Polyester



STOCK  
ALPACA

08  
**KAMA** 7G\*1P  
FY8812  
Nm 8500  
70% Wool 27% Nylon  
3% Spandex





09  
**LEILA** 3G\*1P  
 FY8463  
 Nm 3500  
 31% Mercerized wool  
 44% Polylana 25% Nylon



10  
**KITE\***  
 FY8793  
 Nm 3700  
 38% Cashmere  
 37% Extrafine Merino Wool  
 25% Nylon



11  
**MIFFY** 9G\*1P  
 FY8431  
 Nm 12500  
 68% GRS Polyester  
 29% GRS Nylon 3% Spandex



12  
**BILLY** 3G\*1P  
 FY4920  
 Nm 5000  
 80% Baby Alpaca  
 18% Nylon 2% Spandex





13

**VENT** 9G\*1P  
FY8678  
Nm 16000  
72%Acrylic  
25%Nylon 3%Spandex



14

**TIKA\*** 3G\*1P  
FY8781  
Nm 3/16000  
72%Acrylic  
25%Nylon 3%Spandex



15

3G\*1P **HOBBY\***  
FY7918  
Nm 2600  
39%Wool 22%Alpaca 25%Acrylic  
13%Nylon 1%Spandex



15

3G\*1P **HOBBY RWS**  
FY8173  
Nm 2600  
39%RWS Wool 22%Alpaca 25%Acrylic  
13%Recycled Nylon 1%Spandex



16

**KINA** 9G\*1P  
FY8322  
Nm 12500  
67%Wool 30%Nylon  
3%Spandex





STOCK

ALMA

17

3G\*1P

ALMA\*

FY8283

Nm 4000

41%Alpaca 22%Wool

20%Cotton 16%Nylon

1%Spandex



STOCK

ALPACA

18

BUBBLE

3G\*1P

FY0122

Nm 2600

39%Wool 22%Alpaca

25%Acrylic 13%Nylon

1%Spandex



STOCK

ALPACA

BUBBLE RWS 3G\*1P

FY7505

Nm 2600

39%RWS Wool 22%Alpaca

25%Acrylic 13%Recycled Nylon

1%Spandex



STOCK

ALPACA

19

5G\*1P BUBBLE MINI

FY7831

Nm 5500

42%RWS Wool 19%Alpaca 13%Recycled Acrylic

12%Acrylic 13%Recycled Nylon

1%Spandex







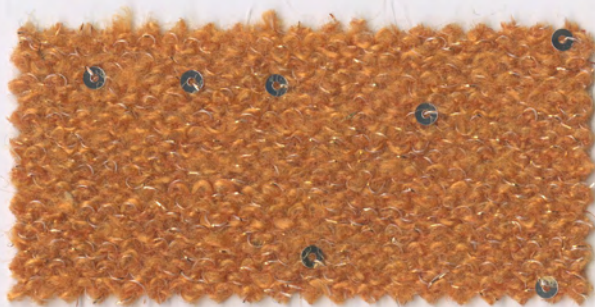
20  
**RONNIE★** 5G\*1P  
 FY8505  
 Nm 4000  
 51%Polyester 49%Metallised Fibre


# MASH-UP GAME

混搭游戏



*Champagne gold*

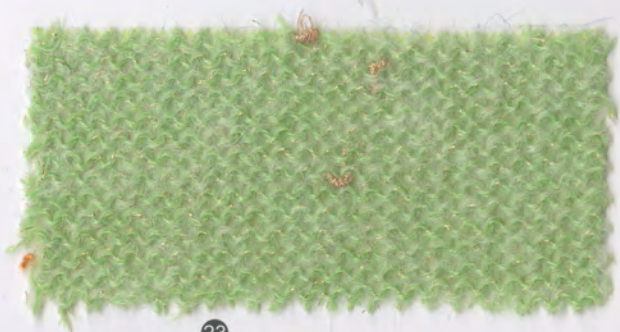


STOCK  **21** **ANANAS\*** 5G\*1P  
CF0820  
Nm 8000  
7% Mohair 54% Acrylic  
20% Nylon 17% Polyester  
2% Spandex  
ANANAS



STOCK  **22** **ALIDA\*** 5G\*1P  
FY8692  
Nm 6000  
100% Polyester  
ALIDA

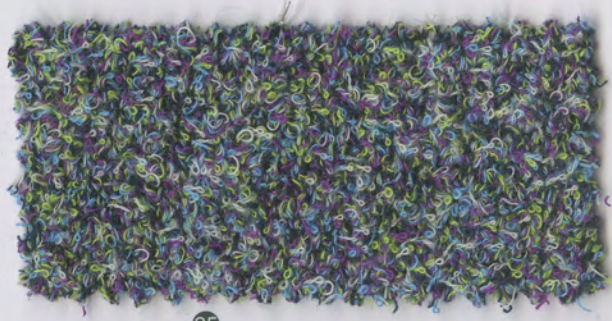




STOCK **23**  
**LIZZY** 5G\*1P  
 FY8745  
 Nm 6300  
 26%Kid Mohair 25%Mercerized Wool  
 46%Nylon 3%Metallised Fibre



STOCK **24**  
**ADA** 7G\*1P  
 FY8805  
 Nm 13000  
 26%Mercerized Wool 10%YAK 41%Nylon  
 15%Polyester 5%Metallised Fibre 3%Spandex



STOCK **25**  
**MELODY\*** 3G\*1P  
 FY6687  
 Nm 3800  
 60% Cotton  
 22%Wool 18%Nylon



STOCK  
26  
JANICE\* 3G\*1P  
FY6958  
Nm 4000  
34%Polyester 19%Nylon  
16%Wool 16%Viscose  
12%Metallised Fibre 3%Cashmere



STOCK  
27  
ANITA 1.5G\*1P  
FY8823  
Nm 2200  
36%Wool 20%Alpaca 23%Acrylic  
14%Nylon 6%Metallised Fibre 1%Spandex



STOCK  
28  
COCA\* 7G\*1P  
FY8708  
Nm 6700  
91%Nylon  
9%Metallised Fibre







# CLASSIC ESSENCE

经典本质



29

COZY★

CF0841

Nm 2/52000

30%Extrafine Merino Wool

30%PVA 22%Nylon

18%Tencel

Hp1960  
JACQUARD

16G\*1P



Toacco Brown





31  
**MANGO\*** 14G\*1P  
 CF0860 *Corespun*  
 Nm 2/32000  
 44%Acrylic 26%Polyester  
 25%Nylon 5%Wool



STOCK  
 SNOWY SOLID  
 30  
**CYPRESS**  
 CF0869  
 Nm 2/120000  
 53%Silk 42%Cotton  
 5%Cashmere



STOCK  
 PAVO  
 32  
**MARLIN**  
 CF0880  
 Nm 2/42000  
 80%Wool  
 10%Tencel 10%Linen



STOCK  
 SNOWY SOLID  
 33  
**CALLA**  
 CS3026  
 Nm 2/100000  
 77%EcoVero Viscose  
 23%Polyester



STOCK  
 SNOWY SOLID  
 34  
**MESSA** 16G\*1P  
 CF0840  
 Nm 2/80000  
 100%Extrafine Merino Wool

LENZING  
**Eco Vero™**





STOCK  
SNOWY SOLID

35

14G\*1P **SAMUEL**  
Corespun CS2440  
Nm 2/50000  
72%Refibra 28%Polyester



STOCK  
OTTO

37

16G\*1P **OTTO\***  
CF0872  
Nm 2/60000  
87%Extrafine Merino Wool  
13%Silk



STOCK  
ALPACA

36

**MOCO** 9G\*1P  
FY8295  
Nm 16000  
78%Extrafine Merino Wool  
22%Nylon



STOCK  
ALFRED

38

**ALFRED\*** 16G\*1P  
C3916  
Nm 36000  
83%Dull Viscose 17%Elite



Anti-bacterium  
and anti-stinking



ANTI UV



STOCK  
TOPIA

39

14G\*1P **PIKKA**  
FY8548  
Nm 21500  
65%Extrafine Merino Wool  
35%Nylon







40  
**BASOL**★ 5G\*1P  
FY7515  
Nm 12000  
68%Llama 29%Nylon  
3%Spandex



41  
**PUFF** 7G\*1P  
FY8724  
Nm 10000  
67%Baby Camel  
33%GRS Nylon



42  
**NAPOLI**★ 7G\*1P  
FY4973  
Nm 12000  
26%Superfine Alpaca 10%Wool  
25%Acrylic 38%Nylon 1%Spandex



44  
**LOIS** 7G\*1P  
FY7362  
Nm 10000  
65%Baby Alpaca  
33%Nylon 2%Spandex



43  
**ARYA** 3G\*1P  
FY6866  
Nm 6500  
70%Alpaca  
28%Nylon 2%Spandex







**47**  
**ROAM** 7G\*1P  
 FY7309  
 Nm 11000  
 56%Cashmere 6%Mercerized Wool  
 32%Nylon 6%Spandex



**45**  
**FINOLA**   
 5G\*1P Nm 18000 FY7707  
 55%Mercerized Wool  
 42%Nylon 3%Spandex

**FINOLA RWS**  
 5G\*1P Nm 18000 FY8170  
 55%RWS Mercerized Wool  
 42%GRS Nylon 3%Spandex



**46**  
**PALA**   
 7G\*1P Nm 12500 FY7655  
 32%Alpaca 32%Mercerized Wool  
 33%Nylon 3%Spandex

**PALA RWS**  
 7G\*1P Nm 12500 FY8172  
 32%Alpaca 32%RWS Mercerized Wool  
 33%GRS Nylon 3%Spandex



**49**  
**ANGUS**  
 FY7807  
 Nm 25000  
 46%Baby Alpaca 12%Wool  
 39%Nylon 3%Spandex



**48**  
 7G\*1P  
**FLUFFY II**  
 FY7554  
 Nm 12500  
 32%Kid Mohair 32%Mercerized Wool  
 33%Nylon 3%Spandex





LENZING™  
**Eco Vero™**



50

**ECO-TOOTLES**

12G\*1P Nm15000 JC1492

7G\*1P Nm 2/15000 JC1495

5G\*1P Nm 4/15000 JC1498

30%Recycled Wool 30%EcoVero Viscose

5%Cashmere 35%Recycled Nylon



51

**DEKER**

12G\*1P Nm 16000 FY8123

47%Mercerized Wool

31%Acrylic 22%Nylon



**DEKER RWS**

12G\*1P Nm 16000 FY8171

47%RWS Mercerized Wool

31%Acrylic 22%GRS Nylon



52

**RE-VERTU\***

JC1473 Nm 4500 5G\*1P

JC1474 Nm 2300 3G\*1P

30%Wool 70%GRS Polyester



53

3G\*1P **ZONNA**

FY4580

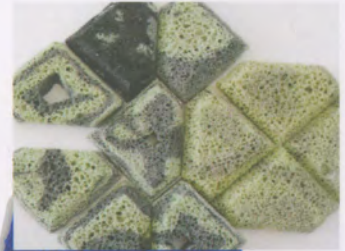
Nm 6000

60% Cotton

40% Polyester

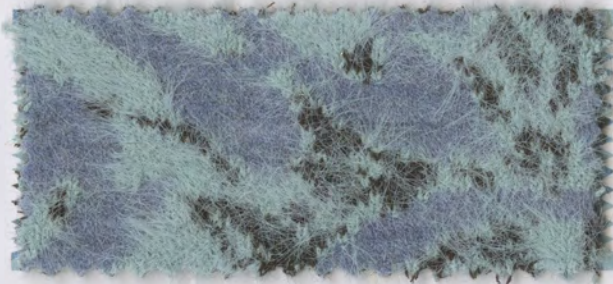






# EXPLORATION

探索角度 **PERSPECTIVE**



Hp1964  
JACQUARD



STOCK  
TESSA



STOCK  
TESSA

54

**TESSA\***  
FY4772 Nm 10000 9G\*1P  
100%Nylon

**VIVECA**  
FY7504 Nm 10000 9G\*1P  
68%GRS Nylon 32%Nylon



*Pastel Turquoise*



STOCK  
TOPIA  
55  
**GLORY** 9G\*1P  
FY8667  
Nm 12500  
100%Nylon



STOCK  
HUGO  
56  
**HUGO\***  
FY8502  
Nm 4300  
58%RWS Wool  
36%GRS Polyester  
6%Nylon



STOCK  
TOPIA  
57  
**TAYRE** 12G\*1P  
FY7836  
Nm 19000  
100%Nylon



STOCK  
TOPIA  
58  
**KIWI**  
FY8209  
Nm 24000  
65%Viscose 35%GRS Nylon







59  
LALA  
FY8649  
Nm 5000  
100%Nylon

5G\*1P



60  
TESSA II  
FY5715  
Nm 8000  
100%Nylon

7G\*1P



61  
SUZANNE\* 5G\*1P  
FY7950  
Nm 7500  
53% Cotton 43% Nylon  
4% Spandex



STOCK  
ALPACA  
62  
**ROSA** 5G\*1P  
FY8810  
Nm 4300  
76% Mercerized Wool  
24% Nylon



63  
**KIMBLEY\***  
3G\*1P Nm 3500 FY8075  
55%Wool 41%Nylon  
4%Acrylic



**KIMBLEY RWS**  
3G\*1P Nm 3500 FY8174  
55%RWS Wool  
41%GRS Nylon 4%Acrylic



64  
**SEMI** Hand Knitting  
FY8135  
Nm 1700  
100%GRS Nylon



65  
**UMA\***  
3G\*1P  
FY8318  
Nm 3900  
90% Cotton 10% Nylon







STOCK  
VITA  
66  
**VITA\*** 3G\*1P  
FY8747  
Nm 2800  
38% Cotton 29% Wool  
9% Alpaca 24% Polyester



STOCK  
SNOWY SOLID  
67  
**WINO** 3G\*1P  
FY8598  
Nm 3000  
90% Cotton 9% Nylon  
1% Spandex



STOCK  
TESSA  
68  
1.5G\*2P **LORETTA**  
FY7747  
Nm 1900  
88% Viscose 12% Nylon



STOCK  
ALPACA  
69  
**SODA** 3G\*1P  
FY6800  
Nm 2600  
85% Mercerized Wool  
15% Nylon



**OWO** 1.5G\*1P  
 Y8606  
 Nm 1100  
 18%Wool 9%Alpaca  
 65%Acrylic 8%Nylon



1.5G\*1P  
**DUNA**  
 FY6932  
 Nm 600  
 46%Wool  
 46%Acrylic 8%Nylon



**BANBO** 1.5G\*1P  
 FY8136  
 Nm 2500  
 75%Baby Alpaca  
 25%Nylon



3G\*1P  
**DORY★**  
 FY8536  
 Nm 2700  
 20%Wool 13%Alpaca  
 19%Acrylic 48%Nylon





# SILK DRY



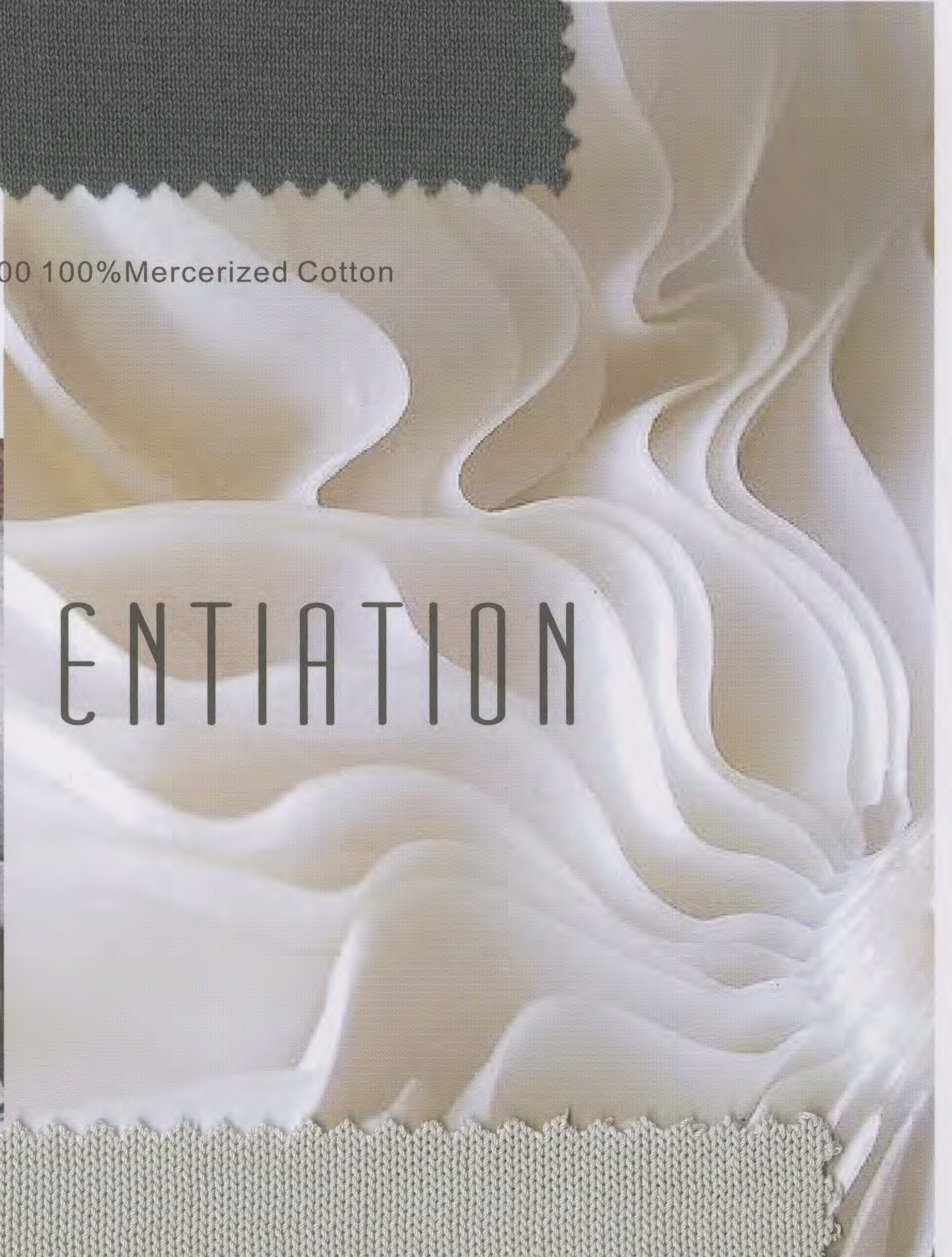
No1 : DENISE CS1489 Nm 6000 50%Silk 50%Cotton



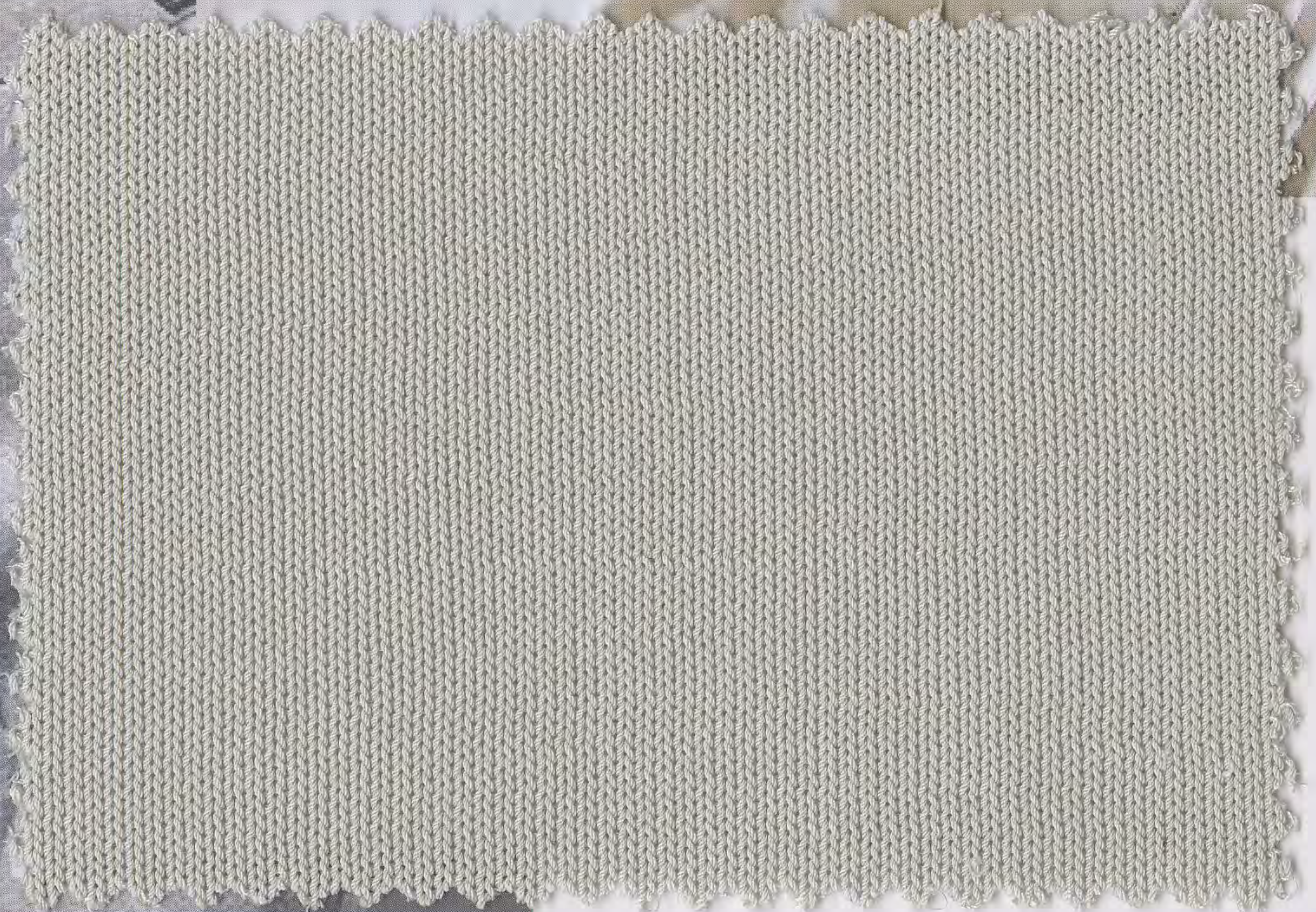




No2 : ELTON CS1096 Nm 2/110000 100% Mercerized Cotton



DIFFERENTIATION



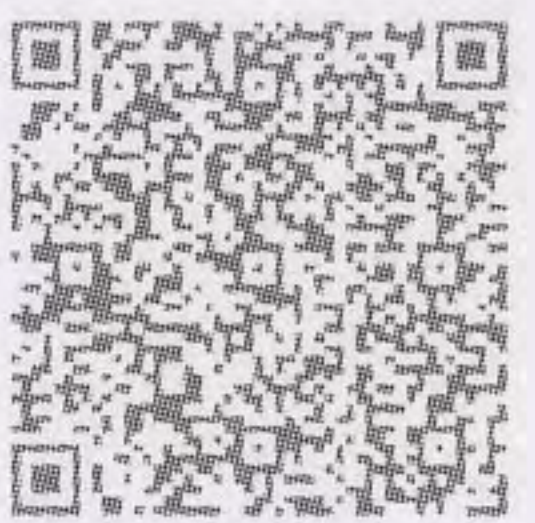
No2 : ELTON CS2063 Nm 13500 100% Mercerized Cotton







No3 : CLOVER CS1790 Nm 3/102000 80%Cotton 20%Linen



.....GREAT QUALITY





No4 : ZUMBA CS2295 Nm 2/116000 100%Silk



LIGHT



*Silk refresh*





No5 : TIM CS0710 Nm 2/120000 55%Tencel 25%Cotton 20%Silk

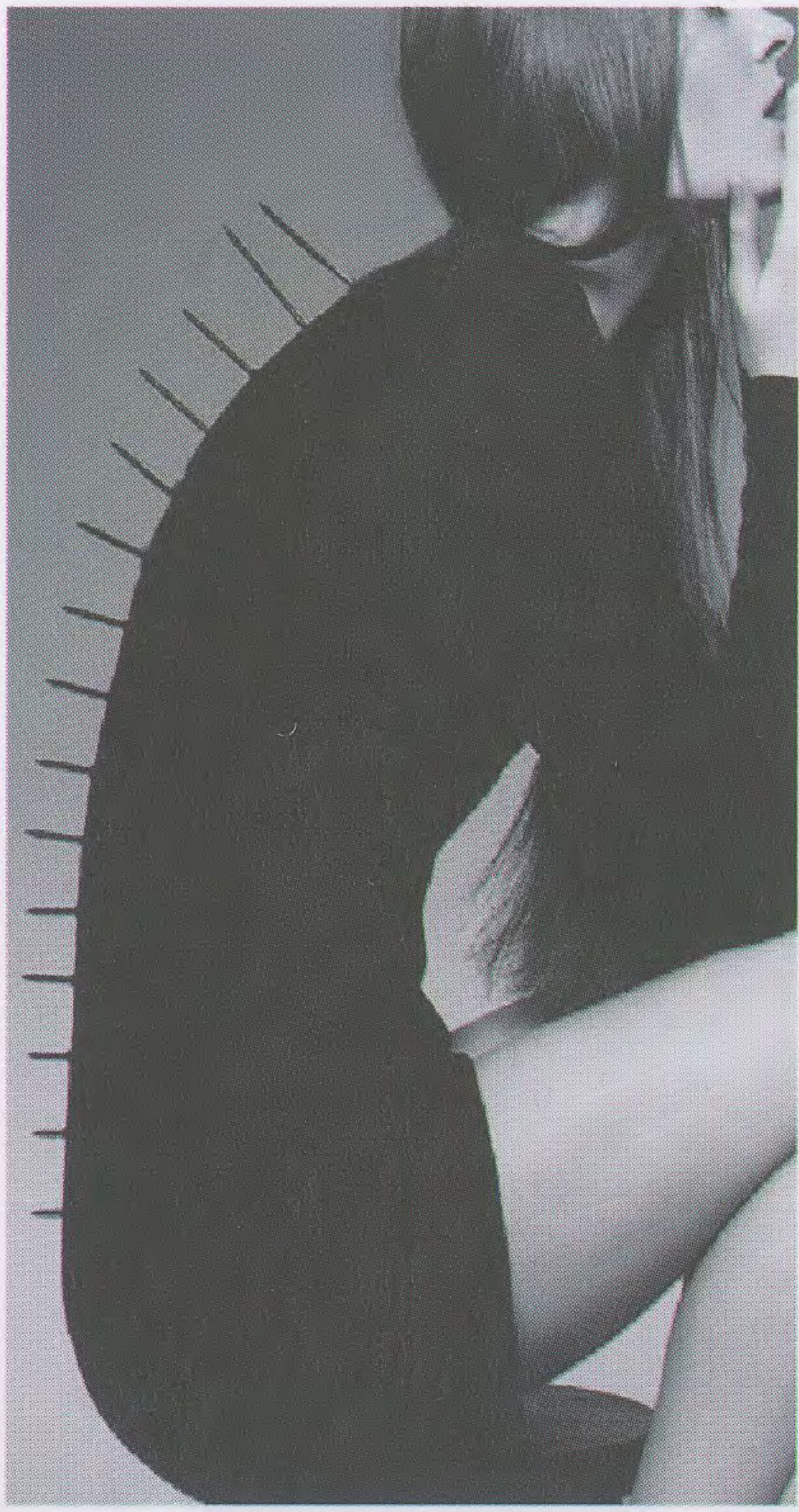
SPIRIT



No6 : CONNOR CS1217 Nm 3/105000 85%Cotton 15%Silk







UPCYCLE



No7 : ONLY CS1604 Nm 27000 47%Nylon  
44%Viscose 9%Metallised Fibre





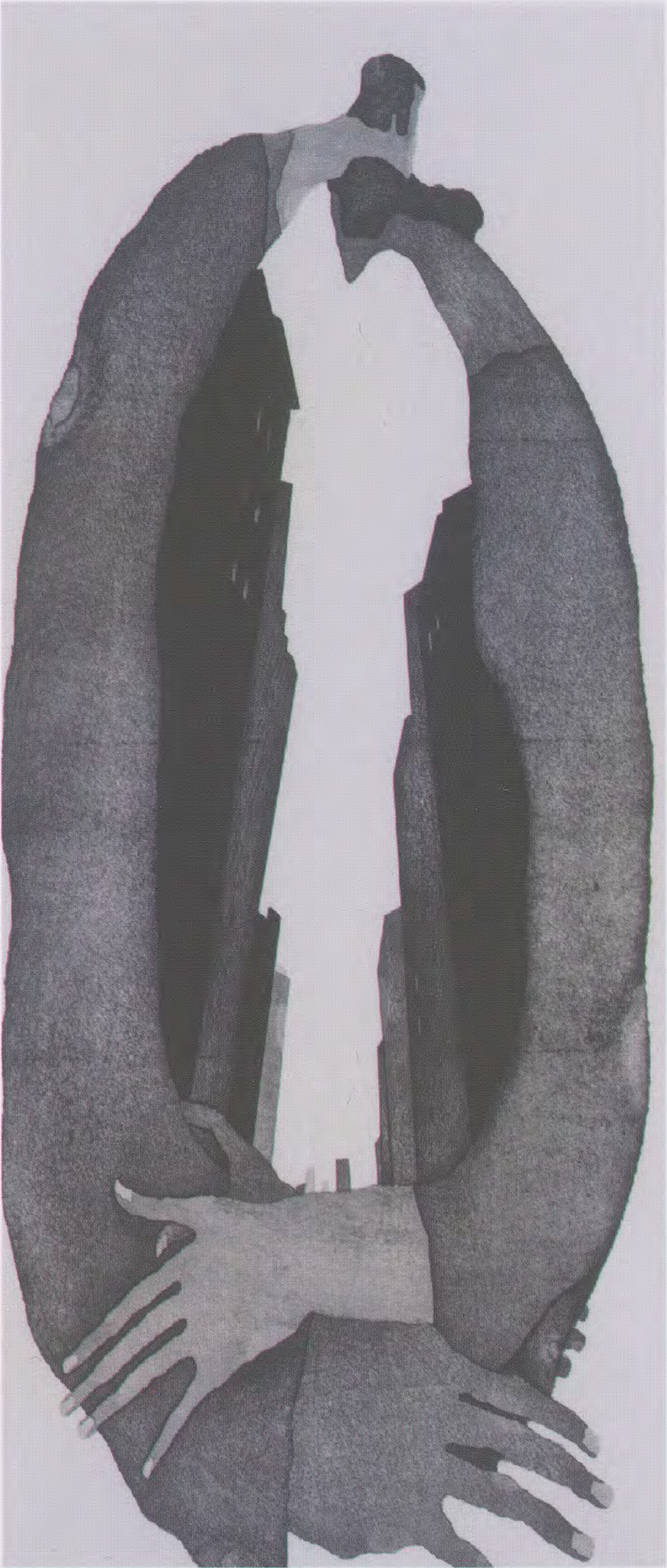
No8 : LOFT C6175 Nm 38000 75%Viscose 25%Polyester



No7 : TOPIA FY4085 Nm 31700 51%Nylon 49%Viscose







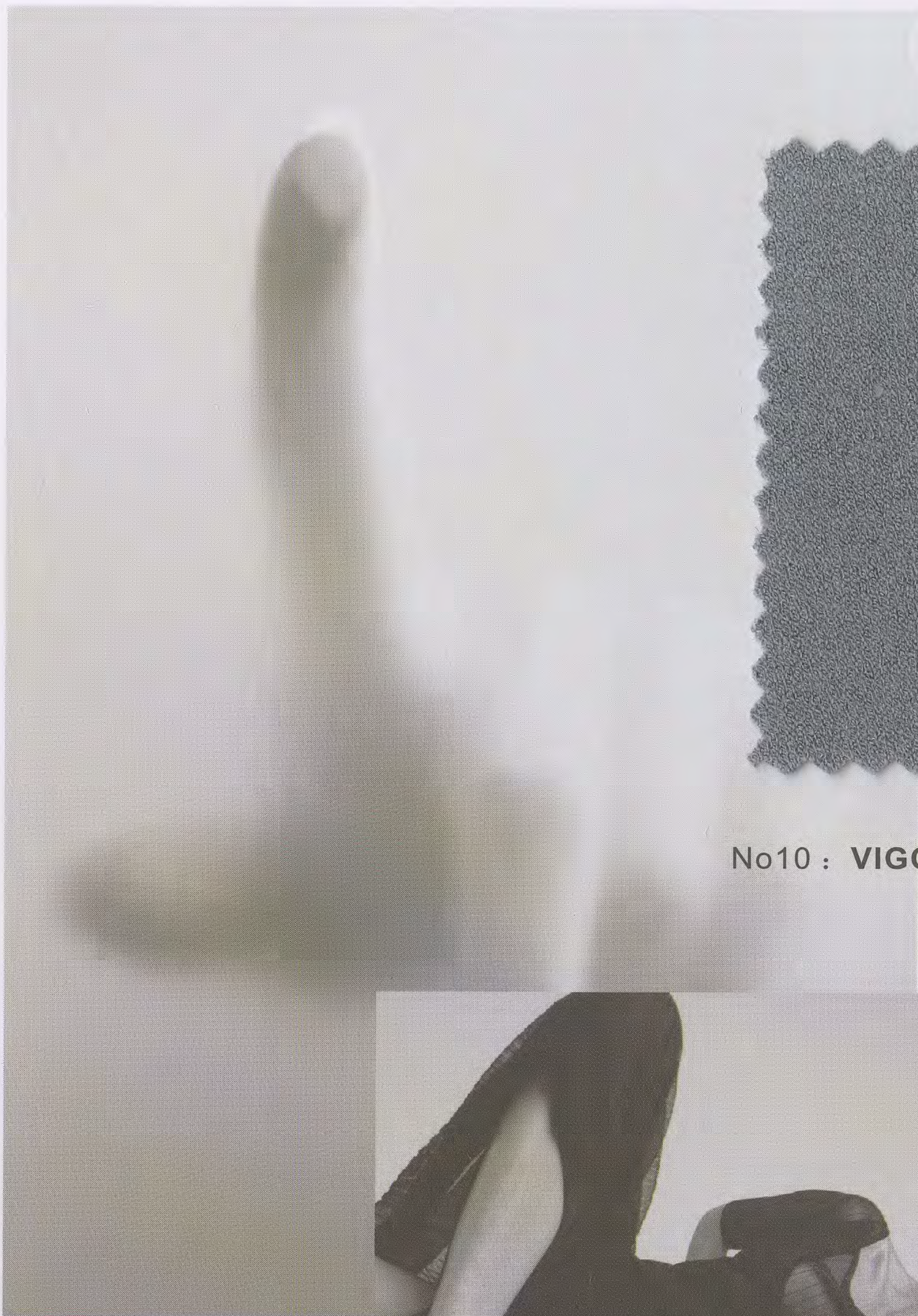
# TACTILE



No9 : GRECO C9019 Nm 3/80000 50%Wool 50%PVA







No10 : **VIGODA** C8644 Nm 2/80000 82%Viscose 18%Polyester



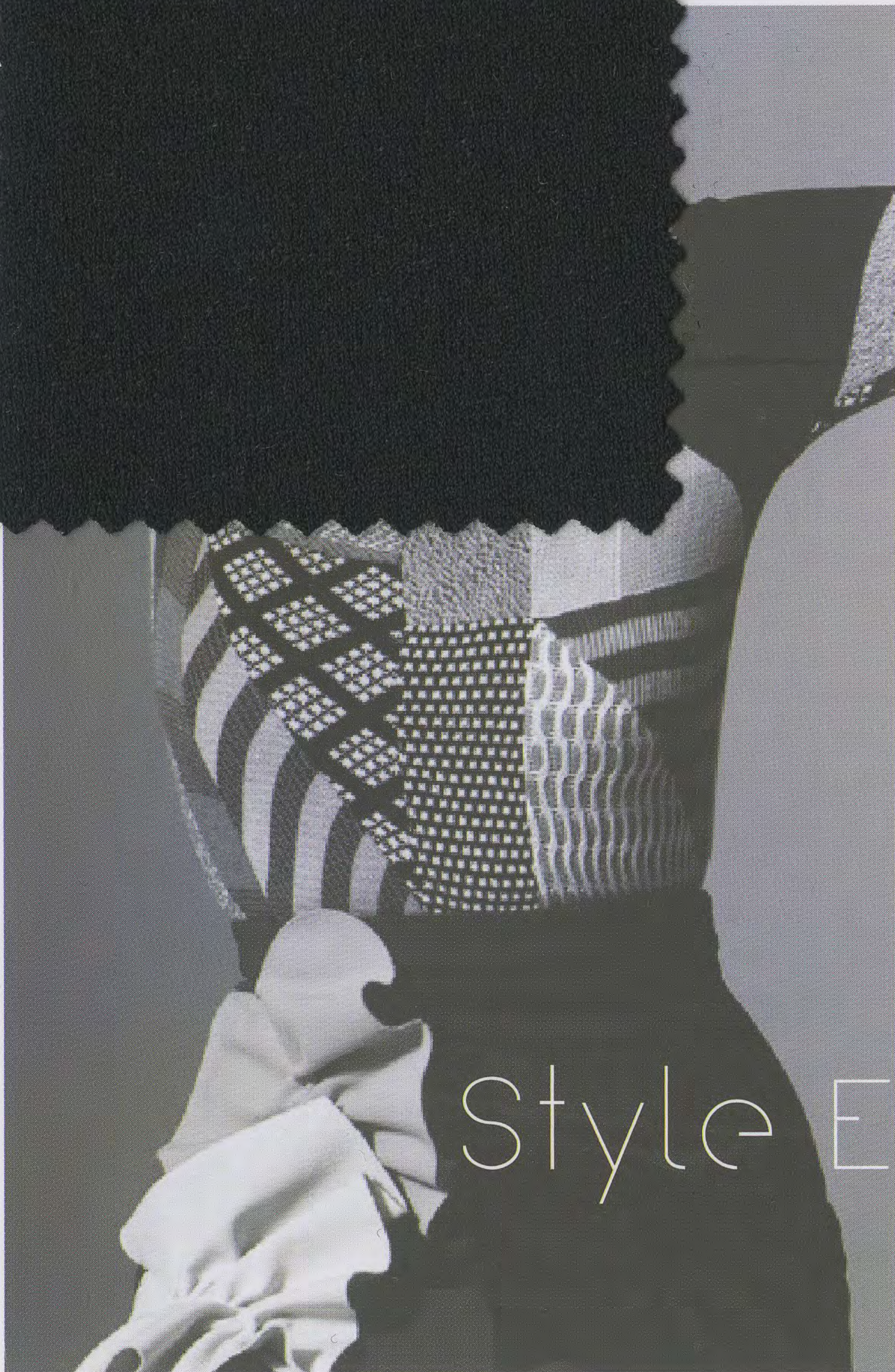
No11 : **FLEECE** FY4405 Nm 16000 100%Cotton







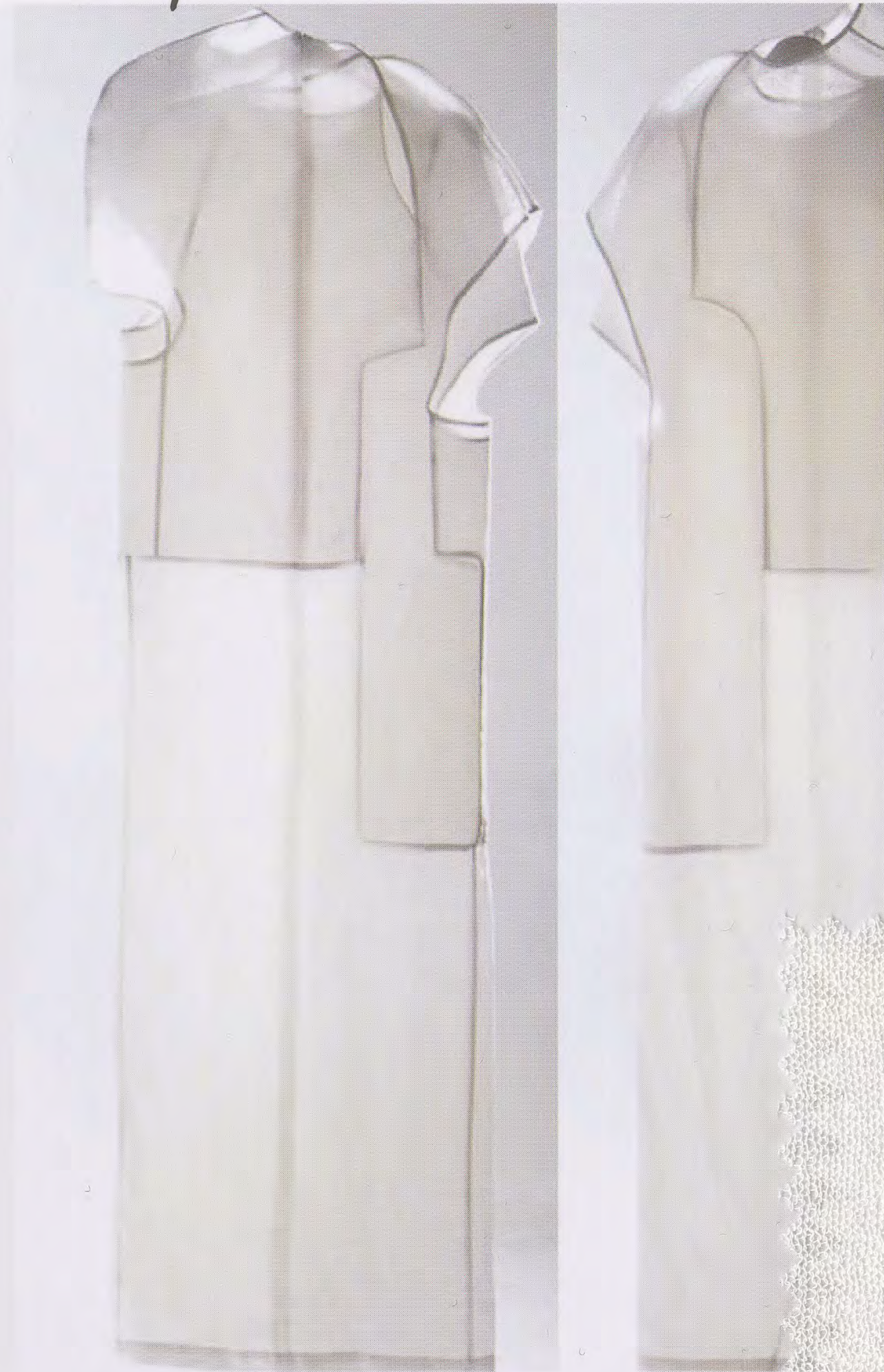
No12 : SENNA CS0489 Nm 2/90000  
88%Viscose 12%Elite



Style Evolvement



# Style Evolvement



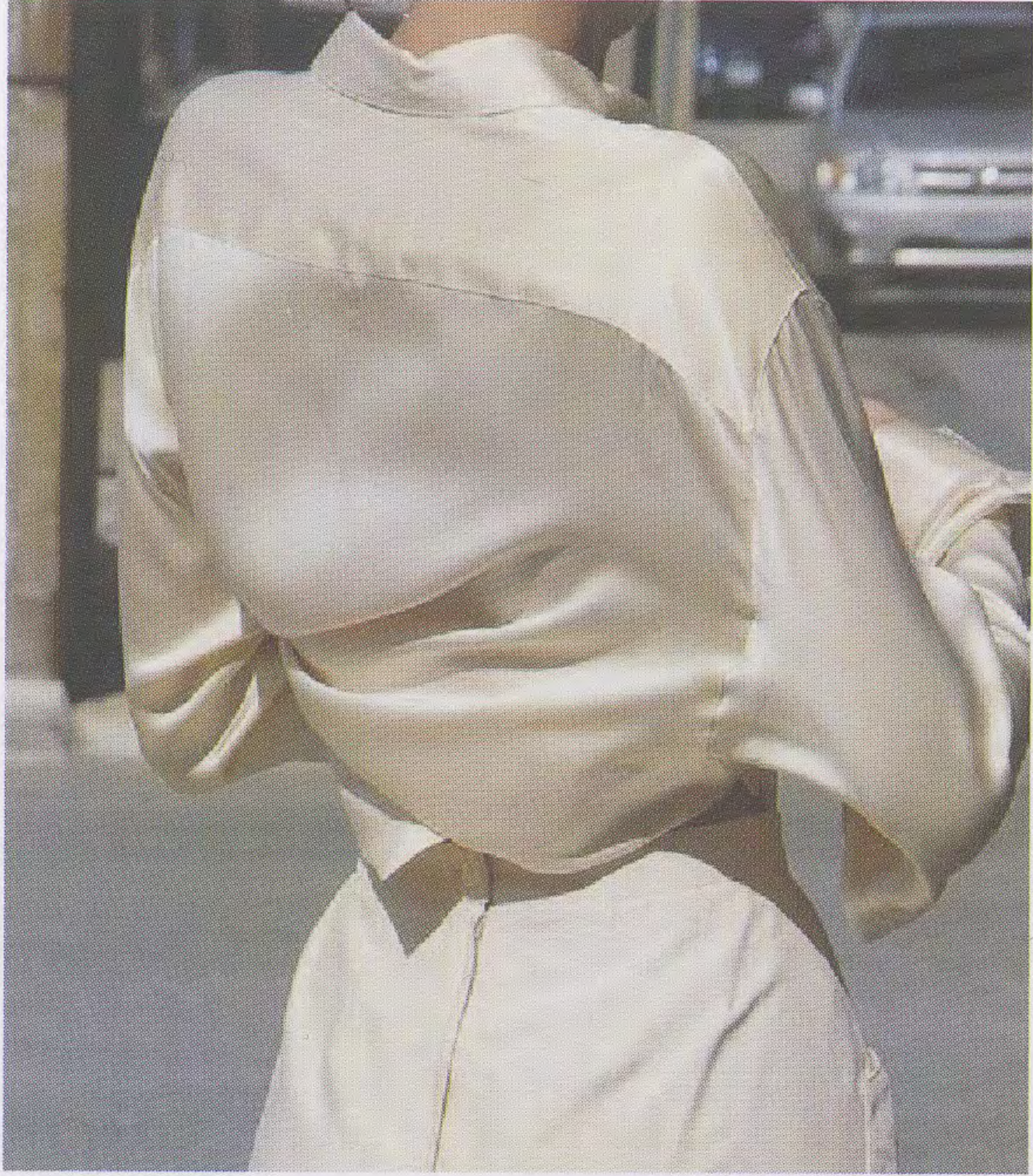
**No13 : ECO WHEAT CS1930 Nm 68000**  
85%EcoVero Viscose 15%Nylon



**No13 : ECO WHEAT CS2527 Nm 45000**  
90%EcoVero Viscose 10%Nylon



NOCTURNAL INNOVATION



No14 : MORGEN CS1377 Nm 3/75000  
100%Enka Viscose



# Fine and close



**No15: SPHENE C8945** Nm 2/75000

**SPHENE C8945-1** Nm 3/75000

**SPHENE CF0227** Nm 6000

70% Mercerized Wool 30% Silk







**No17 : AMERI FY7466 Nm 16000**  
51%Cashmere 49%Silk



# EXTRASENSORY



**No16 : KAMMI C3370 Nm 2/60000 70%Silk 30%Cashmere**





# Trailblazer

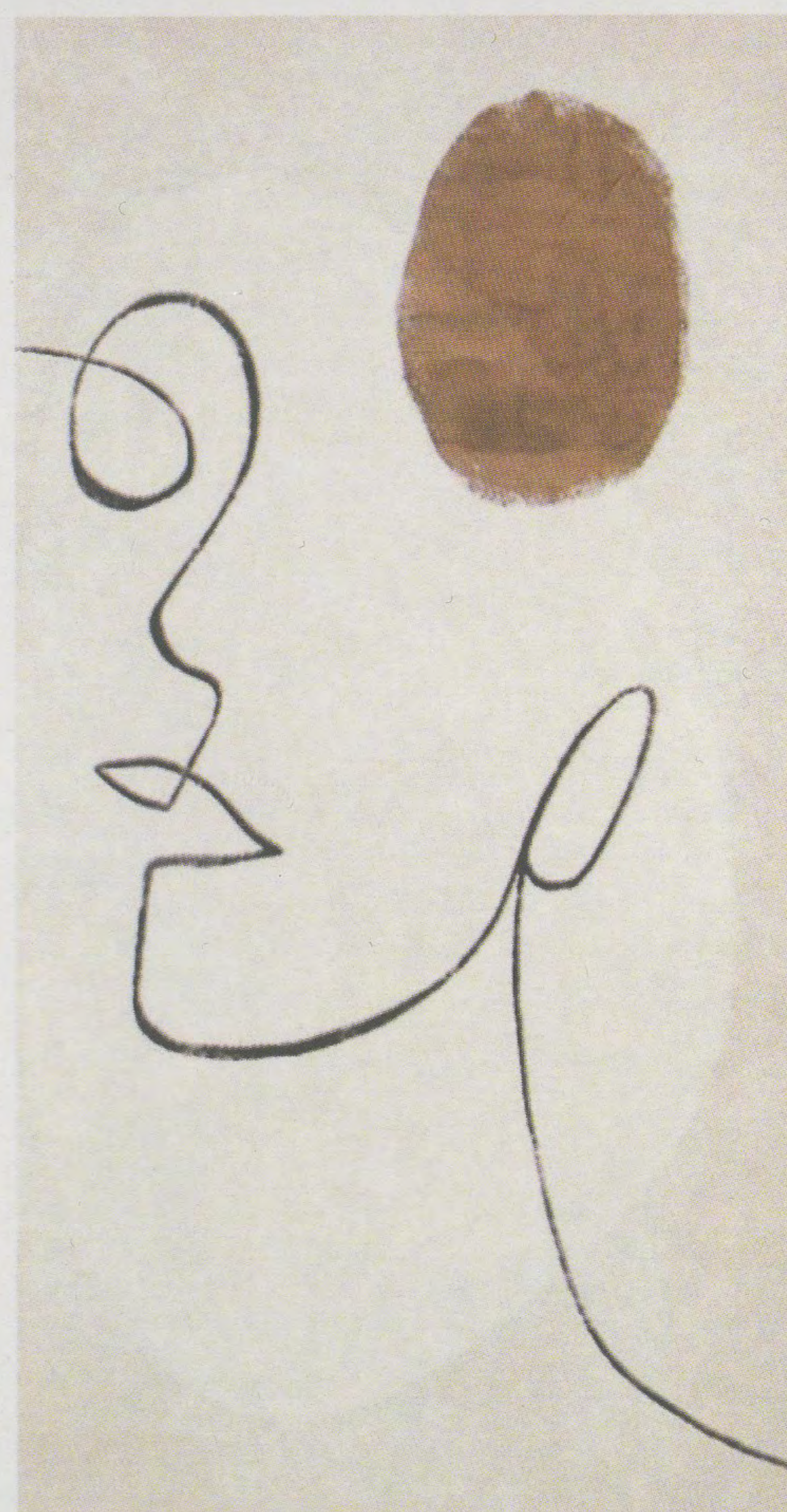
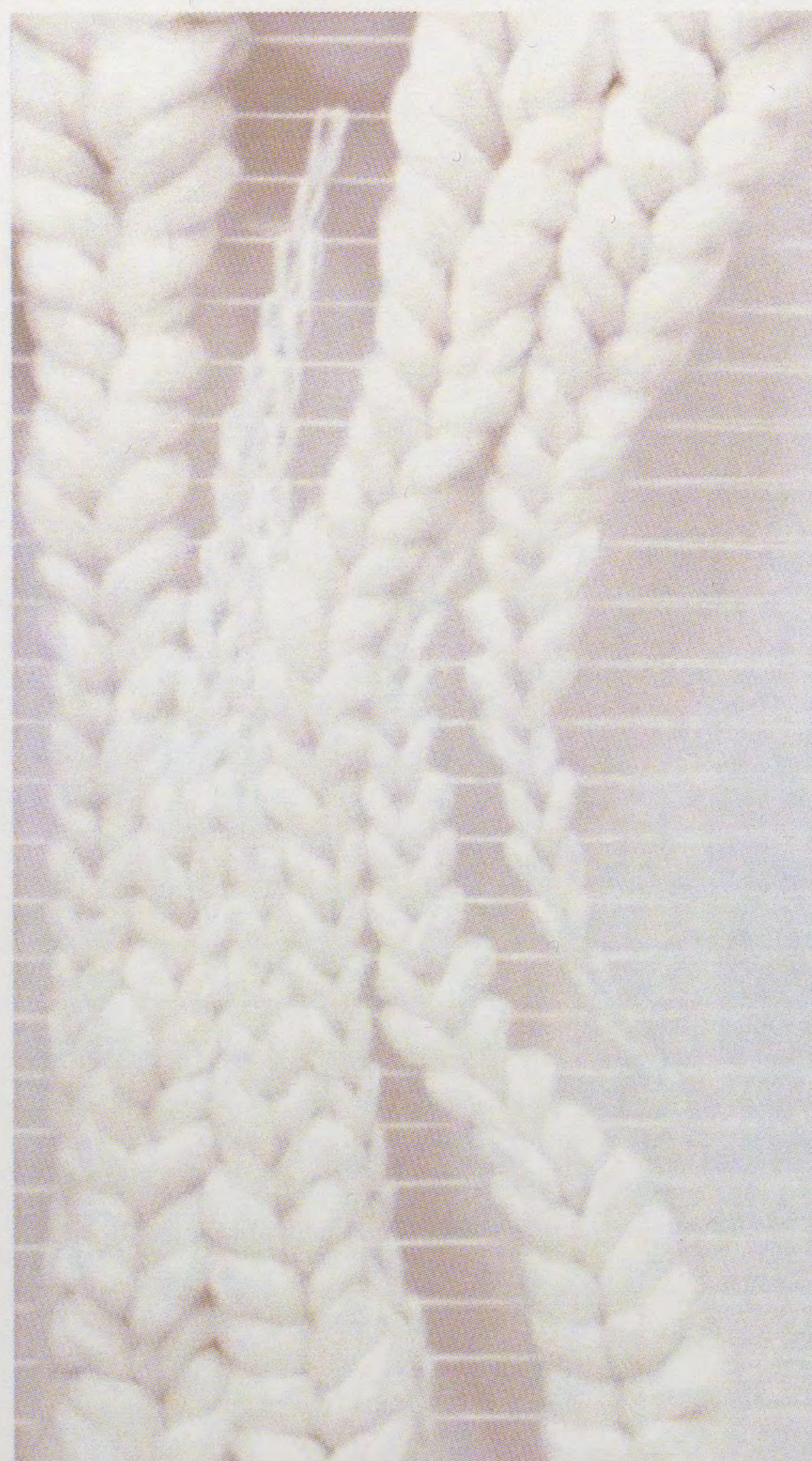


**No16 : MALTA CF0728 Nm 26000**  
61%Silk 27%Cashmere  
12%Metallised Fibre





# SCULPTURE



**No18 : SQUARE FY6005-1 Nm 900**  
53%Alpaca 47%Wool





Warm plush



**No19:** LICIA FY7923 Nm 22000 54%Wool 10%Cashmere  
27%Nylon 6%Metallised Fibre 3%Spandex





# *Warm plush*



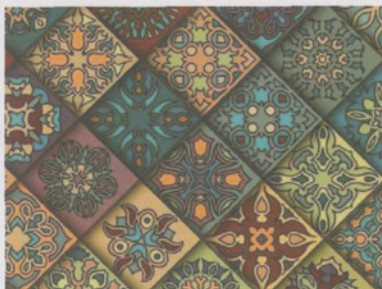
**No20: LENA JC1508 Nm 2/24000 100%Cashmere**







## LAMBSKIN TOUCH



**No21: CONNIE** FY7993 Nm 20000

57%Cashmere 25%Silk 18%Nylon





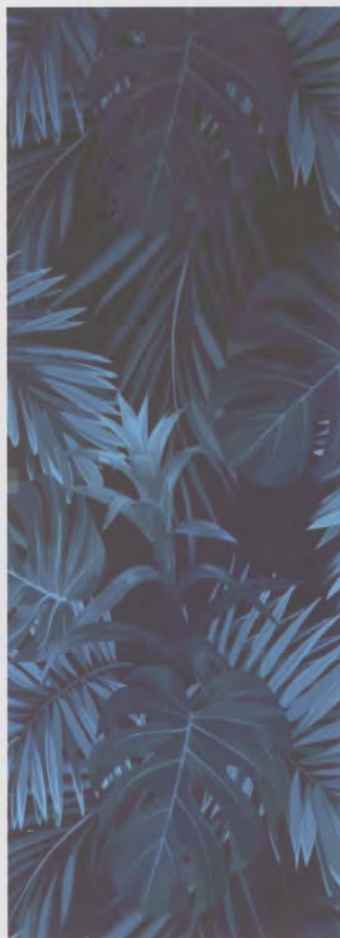
# DELICATE TEXTURE



**No22:** LOTTILE HN2354 Nm 2/60000  
70%Wool 20%Silk 10%Cashmere



**No23:** ALINE CF0727 Nm 2/50000  
60%Tencel 25%Linen 15%Cashmere







**No24:** SCHNEE CS2993 Nm 2/135000  
60%Silk 40%PVA



Delicate texture



**No25:** RUMI CF0708 Nm 2/60000  
87%Basolan Wool 13%Elite





**No26: MARILLA CF0781 Nm 26000**  
69%Cashmere 22%PVA 5%Nylon  
4%Metallised Fibre

*Break through the extreme*







**SNOWY★** 14G\*1P  
C2795  
Nm 2/50000  
72%EcoVero Viscose  
28%Polyester



**SNOWY★** 9G\*1P  
C8858  
Nm 10000  
72%EcoVero Viscose  
28%Polyester

**SNOWY★** 7G\*1P  
C8860  
Nm 7000  
72%EcoVero Viscose  
28%Polyester



Anti-bacterium  
and anti-sticking



LENZING™  
**Eco Vero™**





**ATHENAWOOL** 14G\*1P  
CF0598  
Nm 2/68000  
52%Viscose 38%Polyester  
10%Wool



16G\*1P

**ARES FSC**  
CF0706  
Nm 2/80000  
58%Nylon 32%FSC Viscose  
10%RWS Wool



**ECO SNOWOOL** 14G\*1P  
CF0650  
Nm 2/49000  
43%EcoVero Viscose  
42%Nylon 15%Wool



LENZING™  
**Eco Vero™**



14G\*1P  
**ELVIS**  
C7699-1  
Nm 2/50000  
45%Acrylic  
30%Polyester 25%Wool



**PELAGIA** 14G\*1P  
C9051  
Nm 2/60000  
43%Viscose  
25%Wool 32%Nylon



14G\*1P  
**SNOWOOL**  
C5053-1  
Nm 2/49000  
43%Viscose  
42%Nylon 15%Wool







**SUNNY** 14G\*1P  
 C3208  
 Nm 2/50000  
 72%EcoVero Viscose  
 28%Polyester



LENZING™  
**Eco Vero™**

14G\*1P **ATHENA**  
 C3003  
 Nm 2/68000  
 62%EcoVero Viscose  
 38%Polyester



LENZING™  
**Eco Vero™**



**RETRO** 14G\*1P  
 C9995  
 Nm 2/68000  
 62%Viscose  
 38%Polyester



14G\*1P **COSTA**  
 CS1937  
 Nm 2/50000  
 70%EcoVero Viscose  
 30%Sorona®



 **sorona** LENZING™  
**Eco Vero™**





14G\*1P **CAMDEN ECO HT**  
CF0620  
Nm 2/48000  
50%EcoVero Viscose  
23%Nylon 27%Polyester



LENZING™  
**Eco Vero™**



**PANSY II** 14G\*1P  
C3043  
Nm 2/48000  
79%Viscose  
21%Nylon



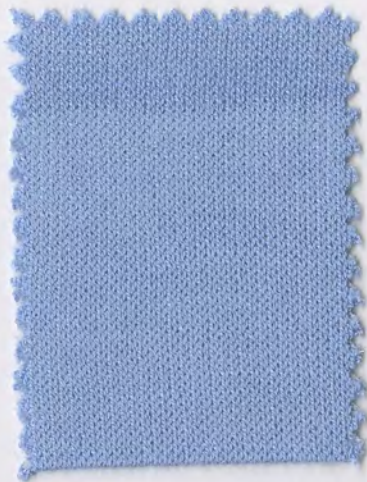
16G\*1P **VIGODA FSC**  
CS2583  
Nm 2/80000  
82%FSC Viscose  
18%Polyester



**CHLOE** 14G\*1P  
C4693  
Nm 2/48000  
70%Tencel  
30%Polyester  
**MINI CHLOE** 16G\*1P  
CS2531  
Nm 2/62000  
79%Tencel  
21%Polyester







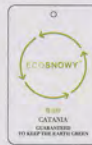
**SNOWPOLY** 14G\*1P  
 CS1855  
 Nm 2/50000  
 72%EcoVero Viscose  
 28%Recycled Polyester



LENZING™  
**Eco Vero™**



12G\*1P **CATANIA**  
 CS0865  
 Nm 2/40000  
 47%PTT 30%Viscose  
 23%Polyester



**AMELIA** 12G\*1P  
 CS1876  
 Nm 2/42000  
 62%Viscose 24%Polyester  
 10%Nylon 4%Metallised Fibre



14G\*1P **CANVAS\***  
 C9612 / C9820  
 Nm 2/50000  
 72%EcoVero Viscose  
 28%Polyester



LENZING™  
**Eco Vero™**



SUSTAINABLE  
 TEXTILE



	1	2	3	4	5	6	7	8
A	 YC9252	 YC9251▲	 YC4135	 YC6611命▲	 YC1860●命▲	 YC4086▲	 YC6594#	 YC4170#
B	 YC9266	 YC4131●	 YC4143●▲	 YC6607#●	 YC2838#▲	 YC9254	 YC4091▲	 YC9256
C	 YC4178#	 YC1872●	 YC6587#●	 YC2837-1#命▲	 YC1865#命▲	 YC9255	 YC1885●▲	 YC1887●▲
D	 YC1873命	 YC4132	 YC9253	 YC6609#	 YC4085命▲	 YC6612●▲	 YC6595#	 YC4171#
E	 YC6581#	 YC9267	 YC6586#	 YC1861#●命	 YC9243▲	 YC4090	 YC1867▲	 YC6599#
F	 YC6580#▲	 YC6583#	 YC6584#●	 YC6589#	 YC1866●命▲	 YC6593#	 YC6596#	 YC6614●
G	 YC6619▲	 YC4133	 YC6618●▲	 YC4079命▲	 YC2840-1#●命	 YC6592-1	 YC4112#▲	 YC6615●



9



YC4100●▲



YC6601-1▲



YC6597-1



YC4096●



YC9259



YC6613▲



YC4094●▲

10



YC4102●▲



YC4097●



YC9261



YC9257



YC9258



YC9263▲



YC9262

11



YC6663▲



YC6602#



YC9260



YC4104●▲



YC4110▲



YC1882●



YC6600-1

12



YC4175#



YC1883



YC4108



YC6603#



YC4115●



YC9248



YC4111●▲

13



YC1874●▲



YC4113●



YC4176#



YC9265▲



YC4118●▲



YC9268



YC6605#

14



YC4177#●▲



YC9264



YC1875#



YC6573#



YC6574#



YC9249



YC6576#▲

15



YC6617▲



YC6577#



YC9250



YC4121●▲



YC6571#



YC4123●▲



YC6572#

16



YC1858●▲



YC6570#



YC9412▲



YC6616▲



YC1877#



YC1876#



YC4124●▲



17



YC1859●命



YC4072▲



YC2832#●命▲



YC2833#命▲



YC1857●▲



YC6569#●▲



YC9380

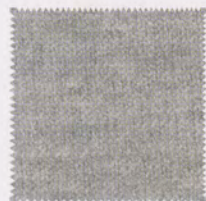
18



YC2836#命▲



YC2831#▲



YC2834#命



YC6604#●



YC4074▲



YC5281#命



YC1878●命▲

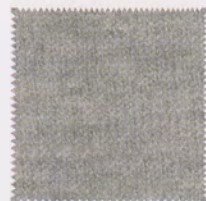
19



YC6606#



YC4073●▲



YC2835#命▲



YC1856#●命▲



YC4071#命



YC4080●命▲



YC1854●命▲

▲命●	YC1854	19G	▲●	YC4102	10A		YC6597-1	9C
▲命#●	YC1856	19D	▲●	YC4104	11D	#	YC6599	8E
▲●	YC1857	17E		YC4108	12C		YC6600-1	11G
▲命●	YC1858	16A	▲命	YC4110	11E	▲	YC6601-1	9B
命●	YC1859	17A	▲●	YC4111	12G	#	YC6602	11B
▲命●	YC1860	5A	▲#	YC4112	7G	#	YC6603	12D
命#●	YC1861	4E	●	YC4113	13B	#●	YC6604	18D
▲命#	YC1865	5C	●	YC4115	12E	#	YC6605	13G
▲命●	YC1866	5F	▲●	YC4118	13E	#	YC6606	19A
▲	YC1867	7E	▲●	YC4121	15D	#●	YC6607	4B
●	YC1872	2C	▲●	YC4123	15F	#	YC6609	4D
命	YC1873	1D	▲命●	YC4124	16G	▲命	YC6611	4A
▲●	YC1874	13A	●	YC4131	2B	▲●	YC6612	6D
#	YC1875	14C		YC4132	2D	▲	YC6613	9F
#	YC1876	16F		YC4133	2G	●	YC6614	8F
#	YC1877	16E		YC4135	3A	●	YC6615	8G
▲命●	YC1878	18G	▲●	YC4143	3B	▲	YC6616	16D
●	YC1882	11F	#	YC4170	8A	▲	YC6617	15A
	YC1883	12B	#	YC4171	8D	▲●	YC6618	3G
▲●	YC1885	7C	#	YC4175	12A	▲	YC6619	1G
▲●	YC1887	8C	#	YC4176	13C	▲命	YC6663	11A
▲#	YC2831	18B	▲#●	YC4177	14A	▲	YC9243	5E
▲命#●	YC2832	17C	#	YC4178	1C		YC9248	12F
▲命#	YC2833	17D	命#	YC5281	18F		YC9249	14F
命#	YC2834	18C	▲#●	YC6569	17F		YC9250	15C
▲命#	YC2835	19C	#	YC6570	16B	▲	YC9251	2A
▲命#	YC2836	18A	#	YC6571	15E		YC9252	1A
▲命#	YC2837-1	4C	#	YC6572	15G		YC9253	3D
▲#	YC2838	5B	#	YC6573	14D		YC9254	6B
命#●	YC2840-1	5G	#	YC6574	14E		YC9255	6C
命#	YC4071	19E	▲#	YC6576	14G		YC9256	8B
▲	YC4072	17B	#	YC6577	15B		YC9257	10D
▲●	YC4073	19B	▲#	YC6580	1F		YC9258	10E
▲	YC4074	18E	#	YC6581	1E		YC9259	9E
▲命	YC4079	4G	#	YC6583	2F		YC9260	11C
▲命●	YC4080	19F	#●	YC6584	3F		YC9261	10C
▲命	YC4085	5D	#	YC6586	3E		YC9262	10G
▲	YC4086	6A	#●	YC6587	3C	▲	YC9263	10F
	YC4090	6E	#	YC6589	4F		YC9264	14B
▲	YC4091	7B		YC6592-1	6G	▲	YC9265	13D
▲●	YC4094	9G	#	YC6593	6F		YC9266	1B
●	YC4096	9D	#	YC6594	7A		YC9267	2E
●	YC4097	10B	#	YC6595	7D		YC9268	13F
▲●	YC4100	9A	#	YC6596	7F		YC9380	17G
						▲	YC9412	16C

# : Melange

● : Stock service in EU

命 : Stock service of Athena

▲ : Stock service of Snowy

Noted: Snowy/Athena/Sunny available melange