



**Masonic**  
Charitable Foundation

# Masonic Charitable Foundation: **Who are we?**

For freemasons  
for families  
for everyone

[mcf.org.uk](http://mcf.org.uk)

**Make your own origami  
Eddie the Teddy!**



See inside for  
step-by-step  
instructions



## Did you know...?

### > The Masonic Charitable Foundation

is a charity funded entirely by freemasons.



### > We award over £5.5 million

every year to hundreds of local and national charities.



[www.mcf.org.uk/community](http://www.mcf.org.uk/community)

### > We tackle some of the biggest challenges facing society.

We're currently focussed on reducing loneliness later in life and ensuring a positive future for young people.



### > We operate 18 care homes

across England and Wales which provide high quality care for both masonic families and local people.

[www.rmbi.org.uk](http://www.rmbi.org.uk)



### > Make a trend with Eddie the Teddy!

- 1 Follow @Masonic\_Charity on Twitter or 'Like' us on Facebook.
- 2 Share a photo of you and your origami Eddie using the hashtag #MCFteddy for a chance to be featured on our social media pages!

### We support around 5,000 freemasons and their family members each year.

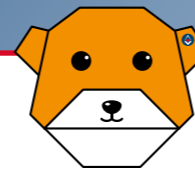
Where there is a financial, health, family or care need, we can help freemasons and their:

- Married or life-partners
- Widowed partners
- Children, stepchildren and grandchildren (under the age of 25 and in full-time education)

[www.mcf.org.uk/support](http://www.mcf.org.uk/support)

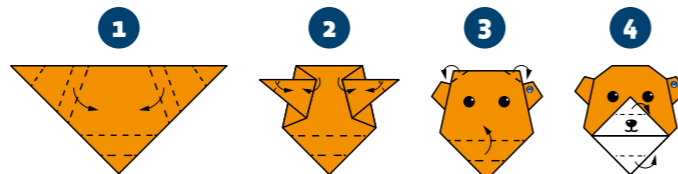


### Make an origami Eddie the Teddy! Say 'hi' to Eddie!



#### > Tear off the opposite page and follow the four steps below:

- 1 Fold sheet in half along diagonal line and make one further fold along dotted lines to each corner as shown.
- 2 Make two further folds to each side along dotted lines.
- 3 Turn over and fold up one half of base along dotted line. Fold back top corners along dotted lines.
- 4 Fold two corners backward along the dotted lines.



> Our Grand President is HRH The Duke of Kent, Grand Master of the United Grand Lodge of England.

> There are around 200,000 freemasons in England and Wales. All freemasons share the values of:

> We fund research into a wide range of disabilities, diseases and conditions.

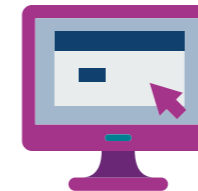
We've recently helped to develop a new test for prostate cancer and a more effective mode of healthcare for people with cystic fibrosis!



> Every year, freemasons give **£46 million** to charitable causes.

> To find out more about freemasonry, including how to join, please visit:

[www.ugle.org.uk](http://www.ugle.org.uk)



**Masonic**  
Charitable Foundation

Find out more about what we do

020 3146 3333

[info@mcf.org.uk](mailto:info@mcf.org.uk)

[mcf.org.uk](http://mcf.org.uk)

@Masonic\_Charity

@themcf

masonic\_charity

MasonicCharitableFoundation

Charity number 1164703.  
Company number 09751836.



For freemasons, for families, for everyone  
mcf.org.uk

