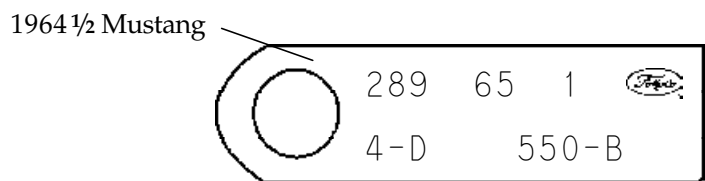
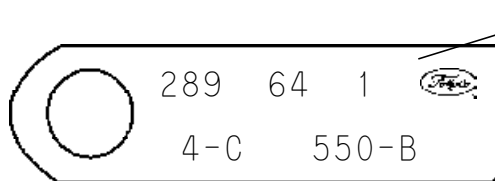
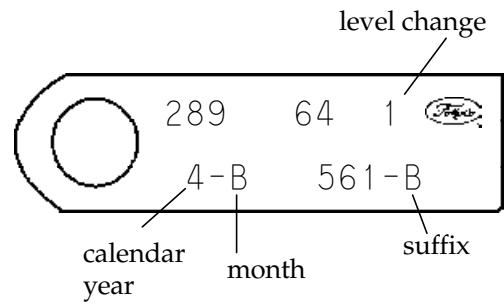
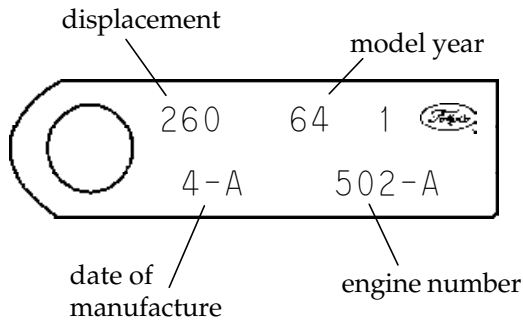


## Engine Tag Samples

(taken from actual engine tags)



Note that on this March tag for a 1964 1/2 Mustang 289 4V the production year is stamped as 64, but on the April tag it is stamped as 65 (these are from actual tags). To see a picture of an actual 1964 1/2 Mustang 289 HiPo tag stamped with a 64 see Volume I, page 4-7, photo 4A5(b).

