

FWDP Newsletter

Volume 31 Issue 4 April 2016



Fort Worth Decorative Painters is a Chapter of the Society of Decorative Painters Celebrating 31 Years

Color Me Beth!

Thank you, thank you, thank you to the very small crowd who painted the bunny project with me last month. I just adore those bunnies and have painted several of them for gifts now. We even brainstormed together about some other wonderful surfaces and uses for this pattern and I can hardly wait to try some of them.

I'm a little puzzled though. Since a couple of years ago, when we started letting members decide which projects to choose, it seems that fewer and fewer of you actually join in and paint. How is that possible? YOU picked these projects and since the teachers never know how many of us will show up, they have to prep for a full house every meeting. It's really the teachers taking the hit for supplies, instructions and samples that she prepped and also for the time she put into getting materials ready for you. I'm afraid at this rate we will lose our teachers since it is very frustrating to do all the prep work and then have very little interest. I encourage each of you to take a look at how you view Chapter programs and recognize the gift that each class presents to you. You're not crazy about the project? That's fine. If there's not too much expense involved in the project how about painting portions of it on a Memory Box or other item you could give away or donate for a good cause. None of us knows so much that we can't find something to learn from every one of our teachers. It's really good for us old dogs to keep trying new tricks because it keeps us young and fresh. Please join in and paint. Every project. Every month. Our teachers give us their best and they deserve the best enthusiasm that each of us can give in return.

At our last Chapter meeting our budget for the year was discussed and approved. Please see a Board member if you have any questions.

Nancy and Armida revealed the theme for our Christmas Party this year. A Color Wheel Christmas! I'm so excited about this theme! I'm a color theory nut so this is right up my alley. Be sure to check out their article.

Jan McCleery's Saturday Special is coming up quickly and the April meeting will be your last chance to sign up with Dusti in person. If you've never taken a class with Jan, it's an event never to be forgotten. Ever. Jan is one of a kind and her classes are just as fun as she is. Again, your Chapter funds are being used to produce these Saturday Specials. It's a fabulous opportunity to send a full day with friends, get a great lesson from talented teachers and have a nice lunch with your painting buds. Who could ask for more! (I have a wooden goose if anyone is interested. I'll have it at the meeting.)

I've been trying like crazy to keep the "meeting" part of our gathering as short as humanly possible so we can get straight to the painting. If I forget to mention something, please let me know! It seems like forever between our meetings and you are some of my very favorite folks so I really can't wait to see everyone at the meeting! Hope you'll ALL be there ready to shine. Beth



Meeting is April 18, 2016

6:00 Social 6:30 Meeting

April
Showers



Bring
May
flowers

FWDP supports the Society of Decorative Painters. Dues are \$50/year. You must be a member of SDP to belong to FWP.

Visit the website at: www.decorativepainters.org

Sunshine—Larue Hughes

Ladies, Please remember to continue to pray for Jan McCleery. She had major surgery today but surgery went well. Also for Jeanette Johnson, she had a pet scan today and has another appointment with an eye specialist. She says she is going to beat this. Way to go Jeanette! Peggy Gililand has had 3 shots in her back and is expecting to feel better soon.



If you know of someone who needs a card, please let me know.

"Friendship doubles our Joy and divides our sorrow"(Author unknown)

LaRue Hughes- 817-834-5048

HAPPY BIRTHDAY TO:

3/25 Bettye Stevens

4/6 Delfa Tarin

4/13 Pam Martinez

5/10 Sherida D'Ambra

5/13 Armida Guzman

5/15 Louise Smith

Treasurer's Report—Sharlene King

Treasury report: - March 29

Checking, Bank of America	\$4,557.91
Savings, Bank of America	5,209.24
Total	\$9,767.15

Membership—Mary Helen Horne

FWDP has 26 members

Please continue to invite art friends that you come in contact with as your move around your community.

Mary Helen

Monthly Raffles—Sharlene King

April raffle items will be provided by Yvonne Lowrie, Pam Martinez, Vera Hudnall & LaRue Hughes.

Many thanks to the wonderful prizes donated for March meeting by Pam, Connie & Juanita.



Sharlene

Memory Boxes

I have not been able to attend the meetings due to family illnesses. Keep painting boxes so we have them when the need arises.

Thanks a lot,
Judy Wallis



Items for Newsletter

If you bring a homemade food item to the meeting, please share it.....bring me a copy or send by email so I can put it in the newsletter.

March Meeting



Beth teaching Flopsy, Mopsy and....now we just need her to look up!



Connie, Sharlene & Louise



Vicki, Louise & Connie—great dinner



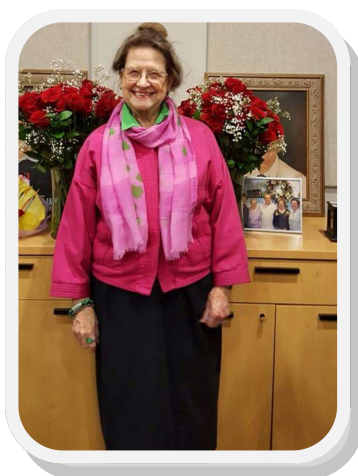
Board meeting—important business!



Vicki, Vera & LaRue



The Raffle Table



Yvonne Lowrie celebrated her 80th birthday with Girl Scout and Painting Friends. Wishing her many more years of fun and happiness.



April Project—LaRue Hughes—Gold Work



Gold Chippendale Style Posies

(adapted from a Pattern by Susan Abdella)

Ladies this is not as hard as it looks- You Can Do It !

Supply List:

Surface of your choice. The pattern is 7-8" round)

HAIR DRYER

Glaze medium - I have enough to share

Blending Gel/ Extender - I can share

Sealer

White graphite

Kneaded Eraser

Gloss varnish

Spray bottle or wet palette

Brushes

Foam Brush

(For Base Coating)

#4,#6,#8 Filberts

1 inch Flat

Good Liner

Paints:

Splendid Gold Dazzling Metallics

Naphthol Red

Red Violet

Avocado

Black Forest or Hauser Dark Green

Ultramarine Blue or Ultra Blue Deep

Black Plum

Grape Juice

Dioxazine Purple

Raw Sienna

White

Black

To be done before class: Base your Surface:

Method 1: Mix 3 parts Naphthol Red and 1 (scant) part Black and an equal part of sealer. After the first coat dries, use a brown paper bag to lightly sand. (If your paint is too thick, add 1 drop of water and mix well to use on your second coat). Do not use sealer if you apply a second coat. If you use this method, make sure you have left over in case it is needed to clean up background. (I used this method on the large plate.)

Method 2: Base surface using Black Plum and a equal amount of sealer. Sand lightly with Paper bag.(If your paint is too thick add 1 drop of water and mix well to apply a second coat without the sealer. Force dry with hairdryer.

1.Trace the pattern onto tracing paper. Be careful to position the tracing in the center of your surface. Slip white graphite underneath and use stylus to **LIGHTLY** go over the main pattern lines.

2. Using your #6 or #8 filbert, load your brush with Splendid Gold. You will be using the straight comma stroke. Remember they will show through the transparent washes we will apply in class. Begin your comma stroke on the left of the flower petal from the outside toward the center, overlapping slightly using about 3 strokes for each petal of the large flower, 2 strokes on the medium petals and 1 on the smaller petals. Leave a little distance between petals to show a separation. You should be able to see 5 separate petals of 3 on the large flower. Check your pattern for the others. Do the same with the leaves.

3. Use the kneaded eraser to erase the pattern lines remaining. The transparent washes will not cover them.

Wrap your surface and bring to class and we will add the finishing touches!

Hope to see you all at our April Meeting!

LaRue



Stroke on Flowers and Leaves

Hospitality—Louise Smith & Juanita Munoz

The following have signed up to bring food to the April meeting:

Main Dish - Beth Stodieck and Vera Hudnall

Side Dish - Dusti Dancer

Dessert - Yvonne Lowrie

Drink - Louise

Recipe Corner

TACO LASAGNA

Prepared by Sharlene King

Ingredients

1 pound ground beef
1/2 cup chopped green pepper
1/2 cup chopped onion
2/3 cup water
1 envelope taco seasoning
1 can (15 ounces) black beans, rinsed and drained
1 can (14-1/2 ounces) Mild Rotel diced tomatoes, undrained
6 -8 corn tortillas (enough for 2 layers in pan)
1 can (16 ounces) refried beans

3 cups (12 ounces) shredded Mexican cheese blend

Directions

1. In a large skillet, cook the beef, green pepper and onion over medium heat until meat is no longer pink; drain. Add water and taco seasoning; bring to a boil. Reduce heat; simmer, uncovered, for 2 minutes. Stir in black beans, refried beans and tomatoes. Simmer, uncovered, for 10 minutes.
2. Place 1/2 of tortillas in a greased 13x9-in. baking dish. Spread with half of the bean and beef mixture; sprinkle with 1 cup cheese. Repeat layer. Top with remaining tortillas and cheese.
3. Cover and bake at 350° for 20 - 25 minutes or until heated through. Bake another 5 minutes until melted. **Yield:** 9 servings.

<http://www.tasteofhome.com/recipes/taco-lasagna>



Saturday Specials

It is time to start signing up for our Saturday Specials for 2016!

Our Saturday Special schedule looks like this:

Saturday: May 14th – Goose/Duck with Cat tails (in oils) Jan McCleery teaching

August 20th – Flowers on Canvas (oils) Nancy Genetti teaching

November 19th - Reindeer Plate (acrylics) Judy Briscoe teaching

We have three WONDERFUL teachers lined up for this year, we all need to come to the seminars and support them. Come join us and bring a friend. This year we will have two lessons in oils, it will be a great time to try something new if you haven't painted in oils. For those of us that have painted in oils it will be a treat to dip into them again. If you have any questions please give me a call or send me an email.

It is time to sign up for the May Saturday Special. Jan will be teaching on a duck decoy (this can also be painted on a surface of your choice.) This is an oil project, but Jan said she can have acrylic instructions for anyone that wants them. Jan will have a palette for those that need one and she will not be charging for it. If you can paint in acrylics you can paint in oils. Pictures of the project are on the website and in the newsletter.

Jan suggested that if you have never painted in oils before that you reduce your pattern so that you don't have as many cat tails and flowers (not make it smaller in size, but fewer items to paint) this will make it easier to finish during the class. This piece can be painted on anything, A flower pot, a metal or wood tray, a pottery crock, a metal can, anything. She will send pictures of painted samples when she has them finished.

Saturday Specials are days filled with Painting, good food, Painting, fun, Painting, friends and fellowship, and more PAINTING! Come join us and bring a friend that wants to paint, remember for the Saturday Specials you don't have to be a member. These are days to reach out to painters that are looking for a great group of people to paint with.

The fee for the Saturday Special is \$20 and it includes lunch. **Please sign up at the April meeting so we can begin to plan for lunch (we will be having a box lunch from Schlotzky's, so I will need to know what type sandwich you want. Original, Ham, or Turkey.) Jan will also need a firm head count for palettes before she leaves San Angelo.**

See me to sign up.

See you at the meeting, Dusti 817-480-7308

August Saturday Special—Surface

In August we will be painting two floral canvases in oils. Don't be afraid of painting in oils, it is really very easy!

You may paint on any surface you desire, but if you would like to paint on the triangle canvas they will be need to be ordered. These canvases have not been found in the area. The triangle is 12". Cost is \$8.00 per canvas with a special price of \$15.00 for two.

Please let Dusti know if you would like the canvas when you sign up. If there are enough wanting canvases at the April meeting, they can be delivered at the May meeting, the last meeting before summer break. If not, they will be ordered later and you will be responsible for picking up your canvas.

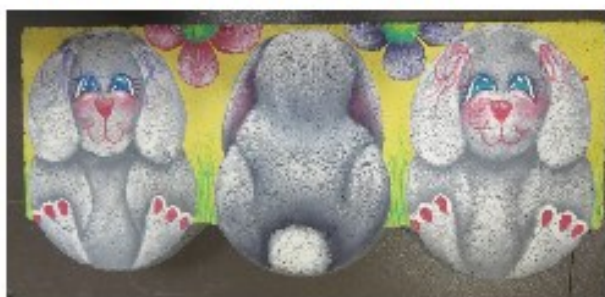
FWDP 2016 MEETING PROJECTS



January—Snowman—Nancy Genetti



February—Chicken Housework Apron—Beth



March—Flopsy, Mopsy... - landscape Stone
Beth Stodieck



April—Goldwork Floral Box—LaRue Hughes



May—Texas Wildflower Wreath—Dusti Dancer

September—Make it Take it—Armida Guzman



October—Scarecrow jar lid—Nancy Genetti



November—Joy Canvas Pillow—Sharlene



May 14

Goose with Cattails—Acrylics

Jan McCleery



August 20

Pair of Florals - oils

Nancy Genetti



Oct (TBA)

Reindeer—Acrylics

Judy Briscoe

Minutes—March 21, 2016

The meeting was called to order at 6:30 pm by President Beth Stodieck. Following items were discussed:

Announcements:

Minutes: Minutes approved as written.

Programs: Tonight Beth is teaching bunnies on landscape paver. April's project will be taught by LaRue, Goldwork on a plate. LaRue said to bring a hair dryer if possible and explained the prep for the piece.

Membership: There 26 paid members for this year. Membership rosters were distributed.

Treasurer's report: Checking 5,004.95 Savings 5,209.16 for a total of 10,213.91. Budget was voted on and approved unanimously.

Newsletter: Deadline is March 26.

Seminar: Sandy Aubuchon seminar was a great success and everyone that attended learned and had fun. Members were reminded that you cannot even take a class a convention for the price the chapter charges. Everyone should take advantage of these bargains.

Quarterly Saturday Special: The first Saturday Special will be May 14 with Jan McCleery in oils. Dusti is taking money tonight. Will be taking money for the August Saturday Special in April.

Christmas Party: Beth announced that Nancy Genetti & Armida Guzman have volunteered to coordinate the Christmas Party. If you would like to decorate a table, please see one of them. The Theme will be A Color Wheel Christmas.

Hospitality: Members were thanked for the food & drinks brought tonight. List going around for next month.

Memory Boxes

Monthly raffle: Sharlene thanked those that brought raffle items tonight. She asked for volunteers for next month.

Sunshine: Many members are having health issues and/or undergoing tests, etc. and couldn't be here tonight. Especially keep Jeanette Johnson, Jan McCleery and Peggy Gilliland in your prayers.

Old Business:

Meeting Adjourned at 6:45 for painting with Beth.

Respectfully submitted,

Nancy Genetti

Recording Secretary

2016 Board



Elected Officers:

President:	Beth Stodieck
Vice/Program/Pres. Elect:	Armida Guzman
Vice/Membership/Directory:	Mary Helen Horne
Secretary/Newsletter:	Nancy Genetti
Treasurer:	Sharlene King & Dusti Dancer

Committees:

Christmas Party:	Armida Guzman & Nancy Genetti
Hospitality/Table Attendant:	Louise Smith/ Juanita Munoz
Monthly Raffle:	Sharlene King
Website/Publicity:	Suzane Godley
Parliamentarian:	
Saturday Specials	Dusti Dancer
Seminars	Nancy Genetti
Sunshine/Birthdays:	LuRue Hughes
Memory Boxes	Judy Wallis

Christmas Party—Armida & Nancy



The Theme for this year's Christmas Party is “A Color Wheel Christmas”

1. We need three volunteers to decorate tables:

This includes a centerpiece to be raffled off and a small favor for each at your table

This year each table will be decorated in a primary color—Blue, Red or Yellow. (It is permissible to use analogous, complimentary or split complimentary colors as long as the main color is the primary you have chosen.) Get those color wheels out!

Please think about this and be ready to volunteer for a table at the April meeting.

First to sign up gets their choice of primary color.

2. Silent Auction

The silent auction is our main income for the year. We would like to have some wonderful pieces this year that members can't resist bidding on.

We ask that the pieces be no older than 2 years.

If older than 2 years, a special piece, i.e. from a noted artist, a Decorative painting historical piece, etc. will be considered by the committee.

3. We will have gifts of five again this year. Beth will be in charge of these.

4. Please paint a special ornament to be exchanged. We are getting fewer and fewer each year. This has always been a fun part of the party. Some of us have ornaments from 30-40 years ago and are they wonderful to bring out at Christmas time. Dusti will be in charge of the ornament exchange.

5. And.....we will have a great dinner as always, along with a few surprises.

Anyone that would like to help or have any suggestions, please see Armida or Nancy.

Sandy Aubuchon Seminar

Everyone that attended Sandy's seminar had a great time and learned a lot. Her color class on Friday was especially helpful for most. Take a look at the photos and see what fun we had!



Sandy with her projects



Watching intently



Great seminar!



Showing the flowers on shirt



Nancy watches Sandy paint flowers

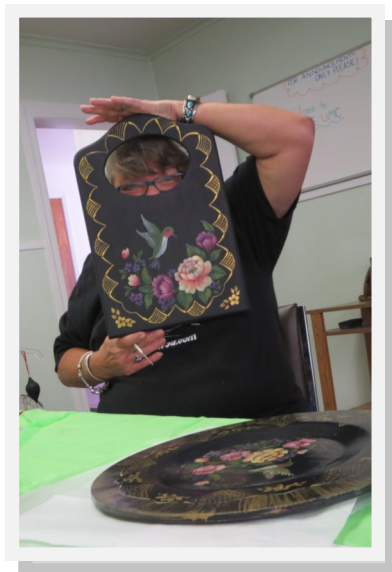


Everyone look up now!

Sandy Aubuchon Seminar



Sandy



Beth



Dusti



Sandy teaching color theory



Vera & Armida



Louise

A big thanks goes to all who helped make the Seminar a success. Dusti secured the location, Beth took care of the food, Louise keep hospitality and set up well under control and Nancy took care of the teacher.

SDP Corner



The first issue of 2016 of the Decorative Painter has been mailed. Be sure to look for your 2016 membership card on the cardboard insert inside the plastic cover.

Check your email for the Ezines sent out by SDP. That have lots of information in them along with downloadable projects. Maybe someday our chapter will be featured.

An Absentee Ballot for electing SDP officers at this year's conference and instructions for submitting it are on page 87 of the new Decorative Painter. Ballots must be postmarked no later than May 1.

Birth Announcement!

Oklahoma City Painting Palooza



(by definition – an all-out Crazy Event)

Due Date - September 26 – October 1, 2016

Size - Small (to begin with) but ***Mighty*** Parents -

Bear With Us, Rol Publications & Turtle Hollow.

Due to an apparent void in this part of our country, that has a huge painting population, we are looking to put the Best of the Best together to bring a frenzy of painting fun, education, laughter and shopping to the southwest.

Rally ALL your painting buddies & friends to come join us for the most enjoyable time you can imagine

The Sheraton Hotel info is on the web site if you want to make reservations for your room. Only \$89.00/night

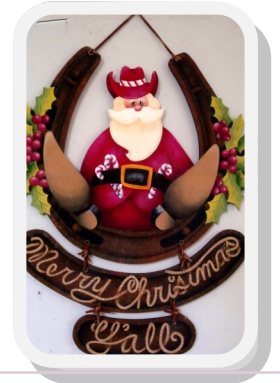
Registration is now open

Out and About



Bluebonnet Chapter—Sandi Strecker Seminar—
Thursday & Friday, April 28-29, 2016.

Cost will be \$100 for two days (that includes your lunch) If interested contact Diana Pfau—(h) 817-477-3415 (c) 817-846-7698- dipaints@hotmail.com



Yellow Rose seminar April 22 & 23, 2016 with one of the premier national seminar teachers, **Chris Haughey**. Chris owns Cupboard Distributing.

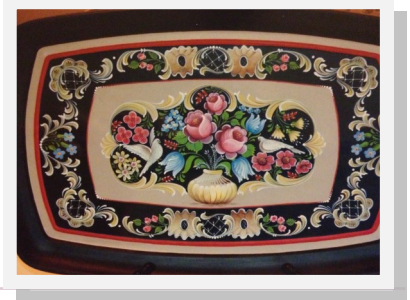
Cost of seminar is \$77 Friday and \$73.00 on Saturday. THIS FEE INCLUDES PREPPED SURFACE AND LUNCH. If interested contact Nancy Genetti— ngenetti@tx.rr.com (h) 972-238-0373 © 214-929-0539

Friday, April 22 – *Merry Christmas Santa*

Saturday, April 23– *Holly Jolly*



Debbie Hoelzel will be in Texarkana July 9-10, 2016. They will be painting this tray. It's a Scottie Foster piece, and the form of painting is Bauernmalerei. Debbie will provide the Jo Sonja paint, and she will bring brushes to sell. (She uses a Jo Sonja's # 1350 Golden Taklon Round brushes # 3, 4 or a 5.) We haven't set a definite cost of the seminar at this point. If interested please contact Linda Ballard at ballard4b@yahoo.com



Save the Dates

Lynn Andrews will be coming to Wildflowers Chapter in Sherman September 21 & 22

Rosemary West will be coming to San Angelo June 18 & 19

Fort Worth Decorative Painters

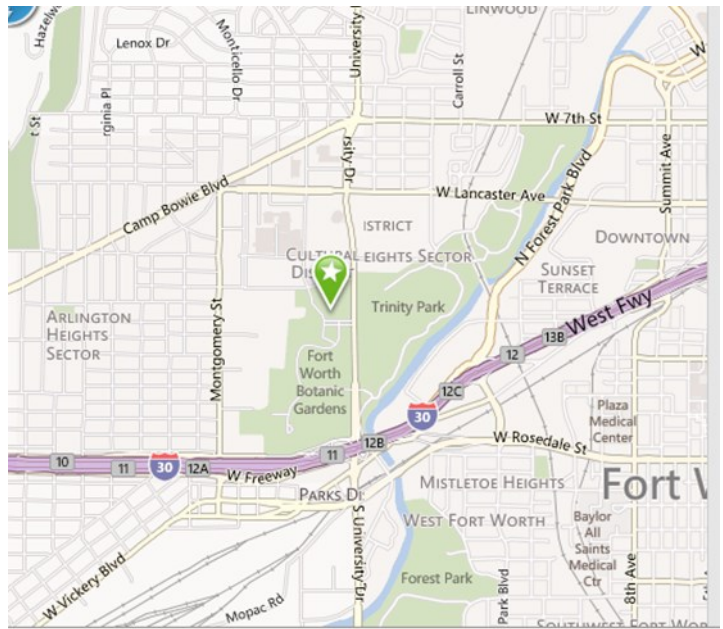
Nancy Genetti
Newsletter Editor
1117 Eton Drive
Richardson, TX 75080

Facebook:

Fort Worth Decorative Painters (FWDP)

www.fwdecorativepainters.com

Next Newsletter Deadline 4-26-16



FWDP Meets the Third Monday of February, March, April, May, September, October & November.

January Meeting 4th Monday and the Christmas Party 2nd Monday in December.

At the

**Botanical Gardens
3220 Botanic Garden Blvd.
Fort Worth, TX 76107**

2016 Dates to Remember

April 18—Regular Meeting—LaRue Hughes—Goldwork floral box
April 26—Board Meeting
May 14—Saturday Special—Jan McCleery—Goose with cattails
May 16—Regular Meeting—Dusti Dancer—Texas Wildflower Wreath
August 20—Saturday Special—Nancy Genetti—Floral Canvases
August 23—Board Meeting
September 19—Regular Meeting—Armida Guzman—Make It Take It
September 27—Board Meeting
October ?? - Saturday Special—Judy Briscoe—Reindeer
October 17—Regular Meeting—Nancy Genetti—Scarecrow jar lid
October 25—Board Meeting
November 21—Regular Meeting—Sharlene King—Joy Canvas Pillow
November 22—Board Meeting (if needed)
December 12—Christmas Party—A Color Wheel Christmas