

Public Law 84-99 Rehabilitation Workshop

Rachael Orellana, PE
Flood Risk Program Manager
USACE, Sacramento District





SETTING THE STAGE FOR TODAY'S WORKSHOP

- Helpful WebEx Features for Today's Workshop
- Introductory Activity & Poll
- Silver Jackets (SJ) Program – What is it?
- CA Emergency Response Exercise SJ Project





HELPFUL WEBEX FEATURES





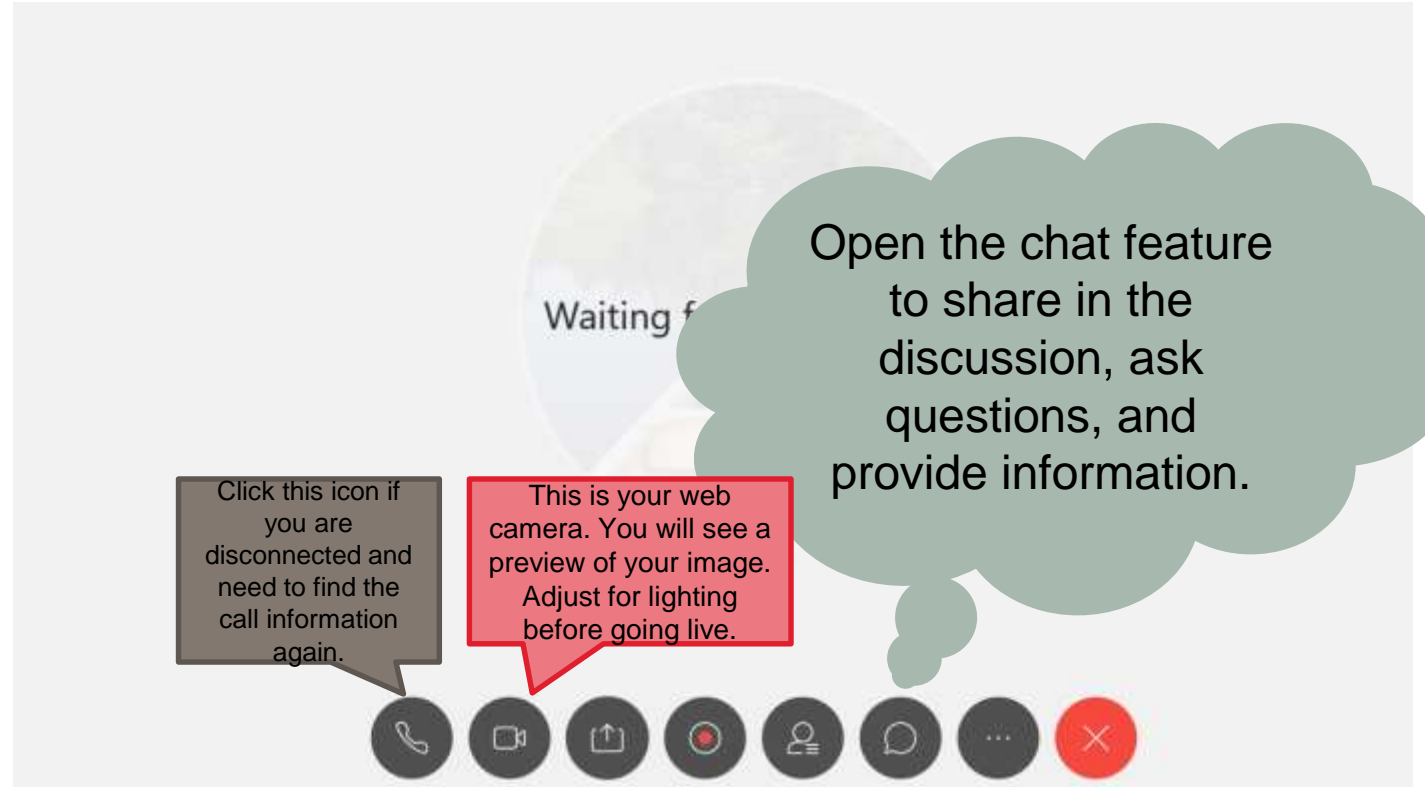
SPEAKING AND ASKING QUESTIONS

Since we have a packed agenda, we have put everyone in listen only mode.

Please enter any questions in the chat.

Speakers, to unmute, press *6 on phone.

Optional: turn on video camera





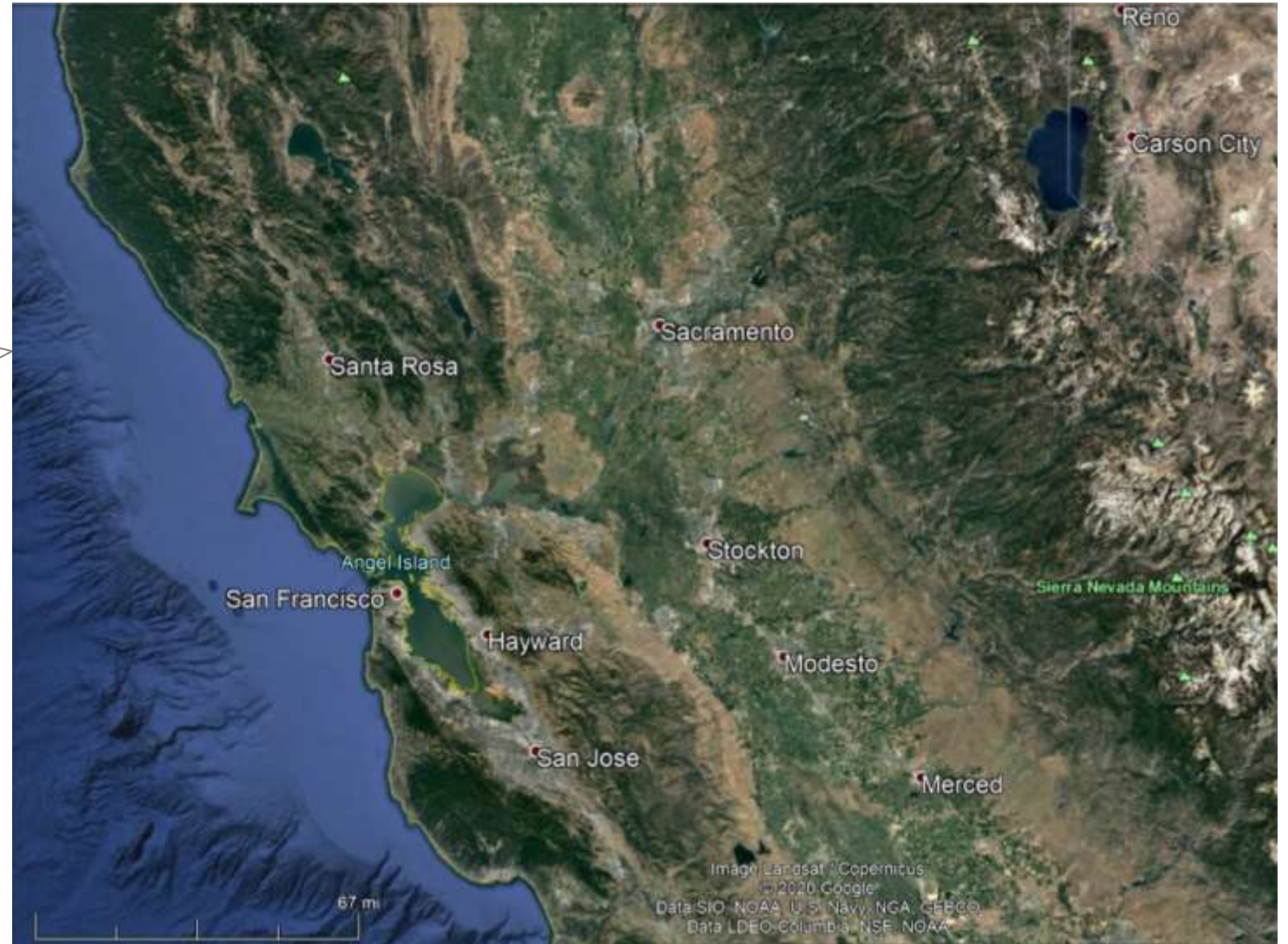
INTRODUCTORY ACTIVITY & POLL





Where Are You?

Use your ANNOTATE PEN on the left to mark up one of the maps – pick a contrasting color!





WHAT IS SILVER JACKETS?





SILVER JACKETS – WHAT IS IT?

8



“Many partners, one team”



- State-led interagency teams
- Bring together Federal, State and locals



Interagency Projects

- 12-18 months
- Typically <\$150K of USACE Support



Each dollar invested by USACE leverages another dollar in project-focused partner contributions





CA EMERGENCY RESPONSE EXERCISE SILVER JACKETS PROJECT





PROJECT ORIGIN





THIS SILVER JACKETS PROJECT INCLUDES:

- Today's PL84-99 Rehabilitation Workshop
- Additional Virtual Workshop(s) / Round Table Discussion(s)
 - Could feature additional details from any of the 1st workshop speakers
 - Could include a facilitated virtual Round Table Discussion to:
 - ❖ clarify State or Federal processes
 - ❖ provide a forum for local voices to be heard for process improvements
 - Will be organized only if requested
- PL84-99 Rehabilitation Table Top Exercise
 - Could be virtual or in-person
 - Targeting Spring 2021
- Delta Region Flood Exercise
 - Full scale, interactive flood simulation event
 - In-field activities
 - Interagency communication and participation





TODAY'S WORKSHOP AGENDA

1:30PM-4:30PM



Time	Topic
1:30 PM – 1:45 PM	Overview of the workshop agenda and introductions <ul style="list-style-type: none">Rachael Orellana, USACE
1:45 PM – 2:35 PM	End of flood to submission of sites: <ul style="list-style-type: none"><u>USACE</u>: Josh Jimerfield<u>DWR</u>: Liz Bryson, Wade Wylie, George <u>Qualley</u> (15 min); <u>CVFPB</u>: Angeles <u>Caliso</u>/Eric Miao (10min)<u>Local</u>: Tom Engler (10min)
2:35 PM – 3:25 PM	Site eligibility: <ul style="list-style-type: none"><u>USACE</u>: Josh Jimerfield/Juan Gonzalez (15 min)<u>CVFPB</u>: Angeles <u>Caliso</u>/Eric Miao (15min)<u>Local</u>: Paul Detjens/Chris Lau (15min)Additional Q&A: 5 min
3:25 PM – 4:15 PM	Completed PIR to completed rehabilitation: <ul style="list-style-type: none"><u>USACE</u>: Josh Jimerfield (15min)<u>CVFPB</u>: Angeles <u>Caliso</u>/Eric Miao (10min); <u>DWR</u>: Dave <u>Wheeldon</u> (15min)<u>Local</u>: Meegan Nagy (15min)Additional Q&A: 5 min
4:15 PM – 4:30 PM	Open Discussion and Closing Remarks <ul style="list-style-type: none">Rachael Orellana, USACE



YOUR PARTICIPATION



We want to hear from you on how to make these virtual offerings and table top exercise helpful for you. The poll at the end of today's workshop will be used to determine future offerings.

Ideas? Interested in joining the planning committee?

Please put your comments in the chat or contact:

Rachael Orellana

Rachael.Orellana@usace.army.mil

(916) 557- 7009



**SESSION ONE:
END OF FLOOD TO
SUBMISSION OF SITES**

USACE REHABILITATION PROGRAM

Joshua Jimerfield – Sacramento District
P.L. 84-99 Program Manager
2020



**US Army Corps
of Engineers®**



PROGRAM OVERVIEW



What is the Rehabilitation Program

- A method for LMAs to receive Federal support following a flood
- A commitment to providing reliable flood damage reduction

How Does the RP Work

- Post flood event District Commander declares flood emergency
- Defining the statement “of other than ordinary nature.”
- Active status
- Notification process
- Submission of requests for assistance



QUESTIONS



Contact Information:

Joshua Jimerfield

PL 84-99 Program Manager

Joshua.j.jimerfield@usace.army.mil

Work: 916-557-6974

Cell: 916-807-0026

CALIFORNIA DEPARTMENT OF WATER RESOURCES

USACE PL 84-99 Rehabilitation Workshop

August 5, 2020

Elizabeth Bryson, P.E.
Chief, Flood Operations Branch

Wade Wylie, P.E.
Chief, Flood Projects Inspections
and Assessment Branch

George Qualley, P.E.
Retired DFM Chief
1989-2000; 2008-2009



Overview

- FOC roles and responsibilities – Liz Bryson
- Flood response field operations – Wade Wylie
- The 1997 Experience – George Qualley

DWR Emergency Response

PROTECT



Life, Property, &
Infrastructure



Environment



Water Quality
& Supply

AUTHORITY

Derived From:

- CA Emergency Services Act (Govt. Code 8607)
- State Emergency Plan
- CA Water Code Section 128

FOC Responds to...

- High water / flooding
- Large and/or intense storms
- Earthquakes / tsunamis
- Dam incidents



Emergency Response

Federal

State

County

Local



SEMS

*The California
Standardized Emergency
Management System (SEMS)
follows the Incident
Command Structure to
respond to emergencies
statewide.*

*Emergencies start and end
at the local level*

The FOC...

Provides:

- Situational awareness
- Technical and direct assistance
- **Conduit for federal assistance under Public Law 84-99**

Does NOT:

- Declare emergencies
- Order evacuations
- Permanently repair levees

FOC's Role

Coordinate DWR's response to flooding statewide

- Two centers
 - Sacramento
 - Eureka



FOC Operations Role During An Event

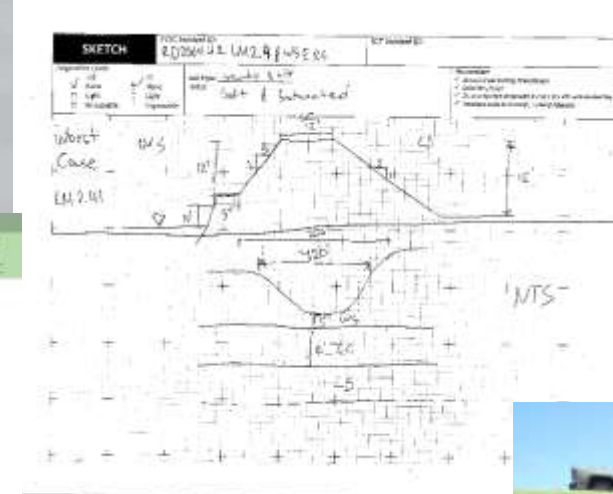
- Responds to requests for flood fight assistance
- Provides technical assistance for flood fights, etc.
- Performs site assessments and documentation
- Reports on incidents to flood managers
- FOC **does not** determine PL 84-99 eligibility



Post-Event Operations Data Available

- Incident status reports (ICS-209)
- Engineers Flood Threat Assessment
- Photos
- Other docs

INCIDENT STATUS SUMMARY									
Date	12/11/19	Time	8:15am	Location	RD 200412, LINDSEY, CA	Incident Type	Emergency	Priority	ERS
Case No.	RD 20041	Page	2	Line	2.41	Line	19	Line	19
Officer	Keith Veltkamp	Phone	209-595-5534	Line		Line		Line	
We note down the Division Road down south end of Monterey Road									
Line	31,652,463	Line	31,652,463	Line	31,652,463	Line	31,652,463	Line	31,652,463
Line	31,652,463	Line	31,652,463	Line	31,652,463	Line	31,652,463	Line	31,652,463
180' erosion caused by an edge. Center portion of erosion is within the prime LMA. Waked erosion to monitor at 11am on 12/11. According to the photos, erosion progressed by 5 feet in about 24 hours. Vertical erosion is about 10 feet.									
Erosion is very deep & further westward protection & erosion is progressing. Therefore, I recommend to use revetment to stabilize it. Temporary flood light methods with wet rocks.									
Erosion is progressing at significant rate. It might cut into levee crown hinge within next days plus continue to monitor where remaining trees.									
Prepared by	Keith Veltkamp	Reviewed by	Keith Veltkamp	Line		Line		Line	
Take photos according to the Photo Documentation Procedures for ERS and upload to the California ERS Map.									



FLOOD ENGINEERING

Engineer's Flood Threat Assessment

State of California
Natural Resources Agency
Department of Water Resources
DIVISION OF FLOOD MANAGEMENT

Engineer's Flood Threat Assessment

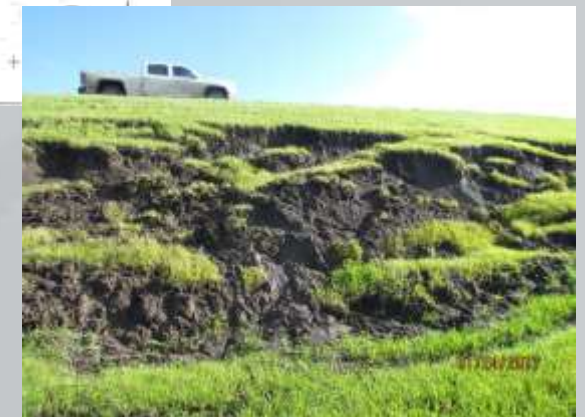
December 2019

John B. Land
Secretary for Reservoirs
California Natural Resources Agency

David Newman
Governor
State of California

Karla Herrold
Director
Department of Water Resources

For Official Use Only



Positioning Well For PL 84-99 Rehabilitation

- Document damage sites
 - Stakes/lathe, paint, sketches, photos, etc.
- Perform maintenance per USACE O+M Manuals
- Address deficiencies identified in DWR and USACE inspection reports
 - LOI or SWIF


State of California - Department of Water Resources - Division of Flood Management - Flood Project Integrity & Inspection Branch
Flood Control Project Maintenance
Levee Inspections
Maintenance Issue Types Only, Levee Inspection Report By Mile - Fall 2019

Sacramento Maintenance Yard Maintenance Area 0009

Waterway	Bank	Unit Miles	Inspector	Inspector
Unit No. 01 Sacramento River	Left	19.35	10/02/2019 10/04/2019	Laz Dad

LM Start	2.30	Rating	M	Issue No.	244
LM End	2.30	Issue Type +	Ma	Location +	LS
Category	Earthen Levee		GPS Latitude/Longitude		
			Start	End	
Item	Slope Stability		38.517702°	38.517705°	
			-121.525941°	-121.525941°	
DWR ID	DWR_MA0009_01_F_2019_244				
Comment Code					
S2: Repair the levee slope damaged by foot traffic and prevent access where possible					
Inspector Comment					


Photo 1 of 2: FA_2019_MA0009_201_244_20191006_00514.jpg



View of erosion on the landside shoulder due to foot path. Fall 2019

LM Start	2.30	Rating	M	Issue No.	244 (cont)
LM End	2.30	Issue Type +	Ma	Location +	LS
Category	Earthen Levee		GPS Latitude/Longitude		
			Start	End	
Item	Slope Stability		38.517524°	38.517526°	
			-121.526431°	-121.526431°	
DWR ID	DWR_MA0009_01_F_2019_322				
Comment Code					
S2: Repair the levee slope damaged by foot traffic and prevent access where possible					
Inspector Comment					


Photo 1 of 2: FA_2019_MA0009_201_244_20190904_00160.jpg



Updated view of foot path on the landside slope. Spring 2018

LM Start	2.33	Rating	A/W	Issue No.	322
LM End	2.33	Issue Type +	Ma	Location +	WS
Category	Earthen Levee		GPS Latitude/Longitude		
			Start	End	
Item	Slope Stability		38.517524°	38.517526°	
			-121.526431°	-121.526431°	
DWR ID	DWR_MA0009_01_F_2019_322				
Comment Code					
S2: Repair the levee slope damaged by foot traffic and prevent access where possible					
Inspector Comment					

Photo 1 of 1: FA_2019_MA0009_201_322_20190904_00221.jpg



View of the slope stability on the waterward side of the levee looking downstream. Spring 2016

Location	Rating	Issue Type
LS: Landside	A: Acceptable	W: Waterward
WS: Waterward	M: Moderate	C: Critical
CB: Canal	U: Unacceptable	EX: Excessive

Monday, December 23, 2019 14:34

FINAL DATA

Page 10 of 114

Awaiting PL 84-99 Rehabilitation

LMA's should:

- Develop contingency plans for damaged sites
- Look for additional funding sources for repairs
- Perform maintenance on minor damages

1995 vs. 1997 FLOOD DAMAGES

1995 PL 84-99 REHAB. IN BUTTE BASIN

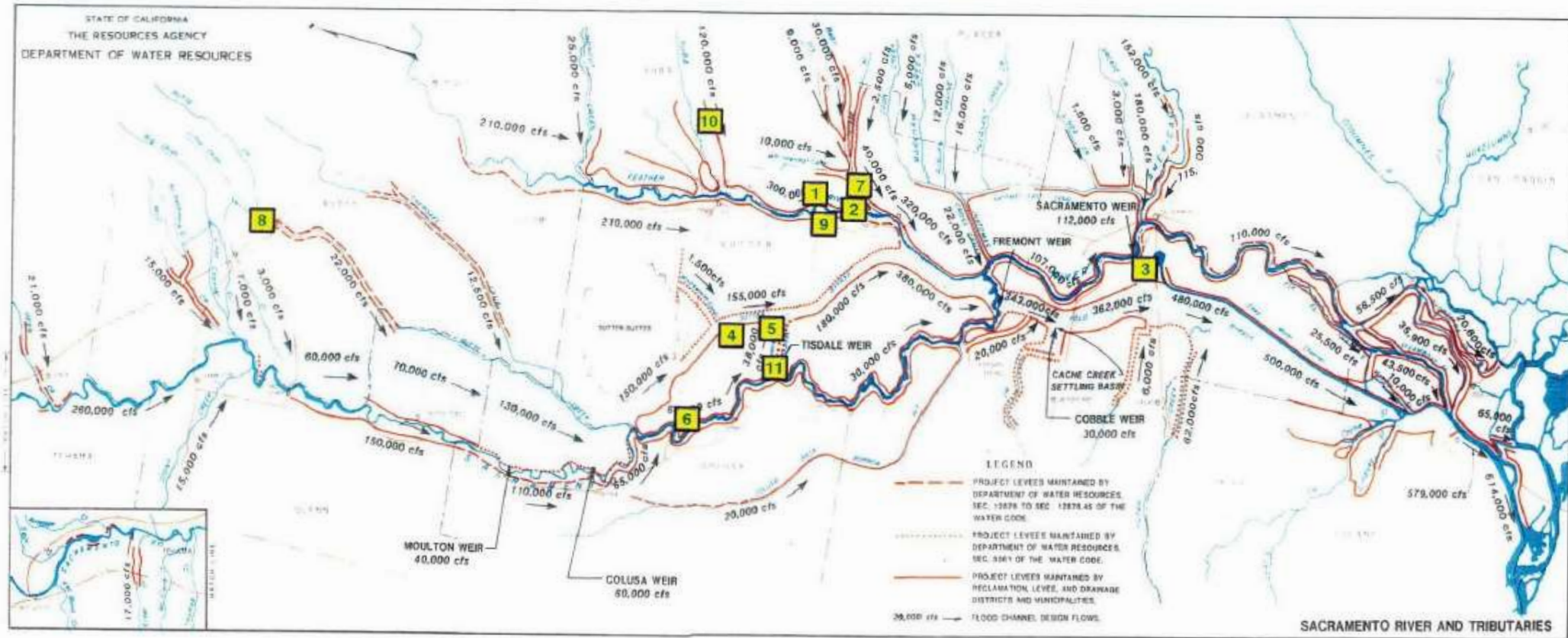
- 1995 Flood was “Medium Big”; Great Flood of 1997 was “Really Big”
- Similar Sac/SJ Basin Flood Damages: \$498 million (1995), \$524 million (1997)
- All 58 California Counties were “Governor Declared” in January and/or March ‘95
- 1995 “Triple January” hit hardest on Sacramento River Basin
- 1995 “One-fourth February” allowed repairs & Dual-path telemetry install
- 1995 “Triple March” hit hardest on SJ West Side Tributaries (Arroyo Pasajero flows washed out I-5 bridges, causing six fatalities)
- Butte Basin PL 84-99: Road 29 washed out in January; fixed in February; washed out again in March. State-built Flood Relief Structures also repaired twice.
- USACE Modeling study of Butte Basin Overflow Area in summer 1995 led to SPK dropping future PL 84-99 eligibility for Butte Basin Plan of Flood Control Features

PL 84-99 REHABILITATION DURING GREAT FLOOD OF 1997

- December 1996 was very wet, with considerable low-elevation snow
- Three subtropical storms added 30 inches of rain to Feather River Basin from late December through early January 1997
- Record flows stressed the Sacramento River flood system to capacity, and overwhelmed the San Joaquin River flood system
- Levee breaks on Feather River and Sutter Bypass and overtopping of Bear River levees resulted in extensive damage and loss of life in deep floodplains
- Dozens of levees failed throughout the SJ River system; widespread flooding
- Two slides from FEAT Report: 11 locations on Sac River system, and 15 locations on SJ River system, most with multiple repair sites

Sacramento River System

January 1997 Levee Problems



1 Feather River Levee Break (Left Bank)

2 Feather River Levee Relief Cuts (Left Bank)

3 Sacramento Bypass Levee Repair (Left Bank)

4 Sutter Bypass Levee Break (Right Bank)

5 Sutter Bypass Levee Relief Cuts (Right Bank)

6 Meridian Emergency Dike

7 Bear River Levee Overtopping And Breaks (Right Bank)

8 Butte Creek Levee Restoration (Both Banks)

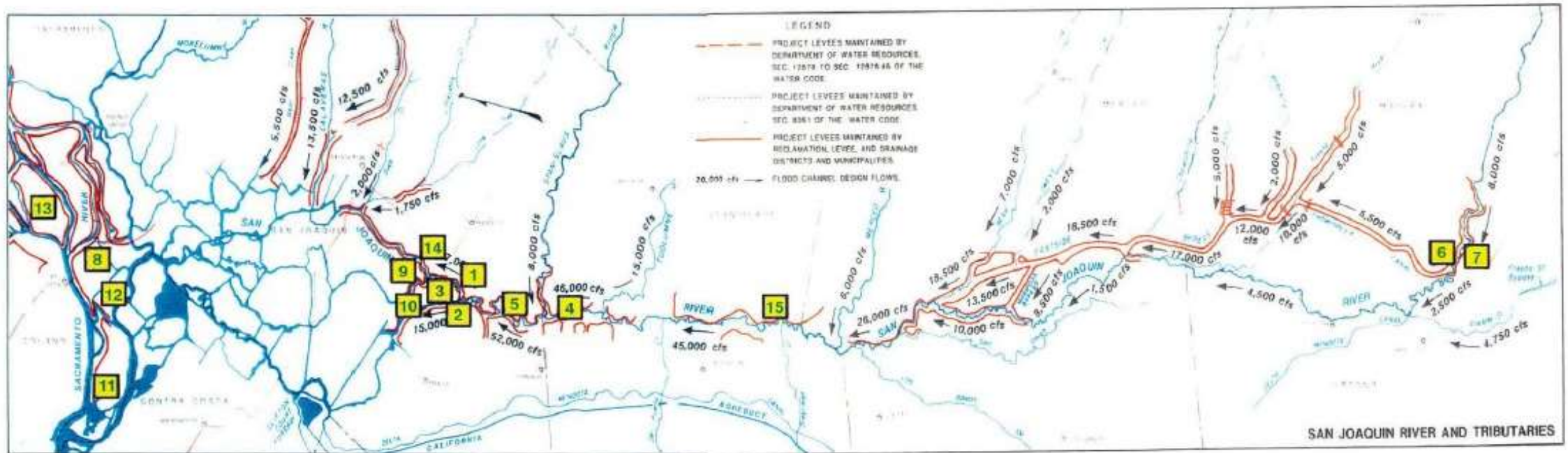
9 Feather River Levee Repair (Right Bank)

10 Yuba River Mining Debris Dike Repair

11 Tisdale Bypass Levee Repair (Right Bank)

San Joaquin River System

January 1997 Levee Problems



1 San Joaquin River Trahern & Walthall Levees (Flood Fights)

2 Paradise Cut Levee Break "A"

3 Paradise Cut Levee Break "B"

4 & 5 Lower San Joaquin River Multiple Levee Breaks

6 Upper San Joaquin River Multiple Levee Breaks (Right Bank)

7 Upper San Joaquin River Multiple Levee Breaks (Left Bank)

8 Brannan-Andrus Island Boils And Levee Sloughing (3 Sites)

9 Upper Roberts Island Levee Seepage (Flood Fight)

10 Stewart Tract (Flood Fight)

11 Sherman Island Levee Slumping

12 Twitchell Island Levee Sloughing (2 Sites)

13 Ryer Island Levee Sloughing

14 San Joaquin River Levee Seepage At RD17 (Right Bank)

15 San Joaquin River Levee Slumping At RD2063 (Right Bank)

PL 84-99 REHABILITATION DURING GREAT FLOOD OF 1997

- USACE introduced Project Information Report (PIR's) to evaluate Rehab. sites
- DWR established Levee Rehabilitation Unit to facilitate USACE Rehab. efforts by providing relocations, R/W, haul roads, easements, borrow sites, mitigation lands
- Costs for deferred maintenance were to be fully reimbursed to State by LMA's
- Reclamation Board forwarded 90 letters written by LMA's to USACE for rehab
- Total number of sites repaired in the Sacramento and San Joaquin flood systems following the 1997 Flood numbered in the hundreds
- PL 84-99 Rehab. was accomplished in two Phases:
 - Phase II Repairs closed breached levees to regain a moderate level of protection
 - Phase III Repairs were performed in 1997 under pre-existing Project Cooperation Agreements between USACE and Reclamation Board for each federal project

FLOOD OPERATIONS CENTER



(916) 574-2619



flood_center@water.ca.gov

Resources

California Data Exchange Center (CDEC)

<http://cdec.water.ca.gov>

CA-NV River Forecast Center (CNRFC)

<http://www.cnrfc.noaa.gov/>

PUBLIC LAW 84-99 WORKSHOP



Angeles Caliso, Enforcement Section Chief

Eric, Miao, Enforcement Section

August 5, 2020



Overview of Presentation

CVFPB's Role in following Key Stages:

- ◎ End of Flood to Submission of Sites
- ◎ Site Eligibility
- ◎ Repair Design thru Construction



CVFPB's Role

- ◎ Non-Fed Sponsor for Federally Authorized Projects
- ◎ Develop and execute Local and Federal Agreements
- ◎ Responsible for LERRDs (Lands, Easements, Right-of-Way, Relocation, Disposal)
 - Liaison between the USACE and Locals
 - Coordinate for all site visits, pre and post construction meetings
 - Weekly coordination meetings with USACE and DWR



End of Flood Submission of Sites

- ◎ USACE opens PL 84-99 and issues “Notice to Public Sponsors”
 - Provides 30-days for submissions
- ◎ CVFPB initial screening and review of submittal
 - Verify LMA PL 84-99 Eligibility Status (active/inactive)
 - Review submittals (template)
- ◎ Participate in Joint Inspections
- ◎ Initiate weekly coordination calls w/USACE and DWR
- ◎ Continuous updates to Locals and stakeholders



Rehab Request Template

PL 84-99 Rehabilitation Assistance Request Form
US Army Corps of Engineers Sacramento District

Date of Request:

Project Name:

National Levee Database ID:

Name of Agency:

Agency Representative:

Phone Number:

Email:

☐ Public Sponsor ☐ Local Maintaining Agency (check one)

If LMA, Name of Public Sponsor:

Rehabilitation Program Eligibility

Last USACE Inspection Date: <input type="text"/>	Current Rating: <input type="text"/>
--	--------------------------------------

Location of Project

County: <input type="text"/>	Township: <input type="text"/>
City: <input type="text"/>	Section: <input type="text"/>
Waterway: <input type="text"/>	Range: <input type="text"/>

Location of Damaged Site No. 1 of

START Lat. Long: <input type="text"/>	END Lat. Long: <input type="text"/>
---------------------------------------	-------------------------------------

Description and extent of damage (attach additional pages if needed):

Please attach a map showing location of damage and photos of damage at each site. If you have more than one site, then fill out as many copies of the next page as needed.

Any additional information?

Lessons learned from 2017



- ◎ Joint USACE/CVFPB/DWR/LMA inspection of sites
- ◎ LMA review of draft PIRs
- ◎ DWR Real Estate Branch engagement prior to issuance of Take Letters
- ◎ Continuous communication with LMAs ahead of construction

Areas of Improvement



- ◎ Staff changes- transfer of information
- ◎ USACE criteria used to determine site criteria
- ◎ Coordination with LMAs and Real Estate early in Site Assessment process
- ◎ Identification of encroachments removal/modification & necessary permitting (CVFPB, 408, CDFW, etc.)
- ◎ Continued LMA engagement & review of documents (design plans, staging areas, etc.)
- ◎ Develop consistent approach to requests from State/LMAs on betterments
- ◎ Continuous communication with LMAs & other stakeholders ahead of construction

State POC's



◎ CVFPB

- Angeles Caliso, Enforcement Section Chief
 - Angeles.Caliso@cvflood.ca.gov (916) 574-2384
- Eric Miao, Enforcement Section
 - Eric.Miao@cvflood.ca.gov (916) 574-1717

◎ DWR

- Kent Zenobia, Supervising Engineer
 - Kent.Zenobia@water.ca.gov (916) 574-1351
- Dave Wheeldon, Branch Chief
 - Dave.Wheeldon@water.ca.gov (916) 574-1243

◎ DWR Real Estate

- Brian Ferrero, Right-of-way Agent
 - Brian.Ferrero@water.ca.gov (916) 654-7560



QUESTIONS (?)

Presented by:

Angeles Caliso, Enforcement Section Chief

Central Valley Flood Protection Board

angeles.caliso@cvflood.ca.gov

(916) 574-2384

PL 84-99 Rehabilitation Workshop

End of Flood to Submission of Sites

Tom Engler

P.E. and CFM

MBK Engineers

Contact: engler@mbkengineers.com

General Overview

- Local issues are minimal during this phase: End of Flood to Submission
 - Biggest question- Does event trigger PL 84-99 program?
 - Sometimes its obvious, sometimes its not
 - 2017 vs 2019 event differences
- Communication is decent at this stage, but there's room for improvement
 - USACE and State visit local districts prior to submittal initiation to help determine which sites are worth spending resources on to pursue in the PL 84-99 program

Valuable Questions for Pre-submittal Communication

1. **When are sites part of the project (PL 84-99) and when are they not?**

- Some sites denied because they are not eligible- -usually erosion sites located away from levee toe, but in the projected waterside levee prism.
- Is there a defined project limit?
- Are channel repairs considered part of the project (bank erosion with potential to affect levee integrity)?
- Are sites previously identified as 'monitoring sites' eligible for PL 84-99?
- At what point is a site considered damage vs Sac Bank erosion? Is there a specific distance or amount of damage?

2. **How is the B/C ratio calculated?**

- Are there publicly available documents for districts to determine levee system benefit calculations to get idea on how much damage can be justified for repairs?

3. **Is there a way for locals to be engaged in proposed design (input on methodology and extent)?**

- Aware of sensitive lands and facilities.
- Familiar with past performance and local conditions that may affect repair methodology.
- Will be responsible for OMRR&R after the fact.

SESSION TWO: SITE ELIGIBILITY

USACE REHABILITATION PROGRAM

Joshua Jimerfield – Sacramento District
P.L. 84-99 Program Manager
2020



**US Army Corps
of Engineers®**



SITE ELIGIBILITY



How Eligibility is Determined

- Active status
- Most recent inspections
- SWIF/LOI status
- Review of as-built drawings

What Could Affect Eligibility

- Deficient or deferred maintenance
- Poor maintenance
- BCR < 1.0



QUESTIONS



Contact Information:

Joshua Jimerfield

PL 84-99 Program Manager

Joshua.j.jimerfield@usace.army.mil

Work: 916-557-6974

Cell: 916-807-0026

PUBLIC LAW 84-99 WORKSHOP



Angeles Caliso, Enforcement Section Chief

Eric, Miao, Enforcement Section

August 5, 2020



Overview of Presentation

CVFPB's Role in following Key Stages:

- ◎ End of Flood to Submission of Sites

- ◎ Site Eligibility

- ◎ Repair Design thru Construction

Site Eligibility



- ◎ Participate in Joint Inspections
- ◎ Provide USACE assistance/documentation on sites for determination
- ◎ USACE determination of eligibility



QUESTIONS (?)

Presented by:

Angeles Caliso, Enforcement Section Chief

Central Valley Flood Protection Board

angeles.caliso@cvflood.ca.gov

(916) 574-2384

PL 84-99 Rehabilitation Contra Costa County Perspective



Paul Detjens & Chris Lau

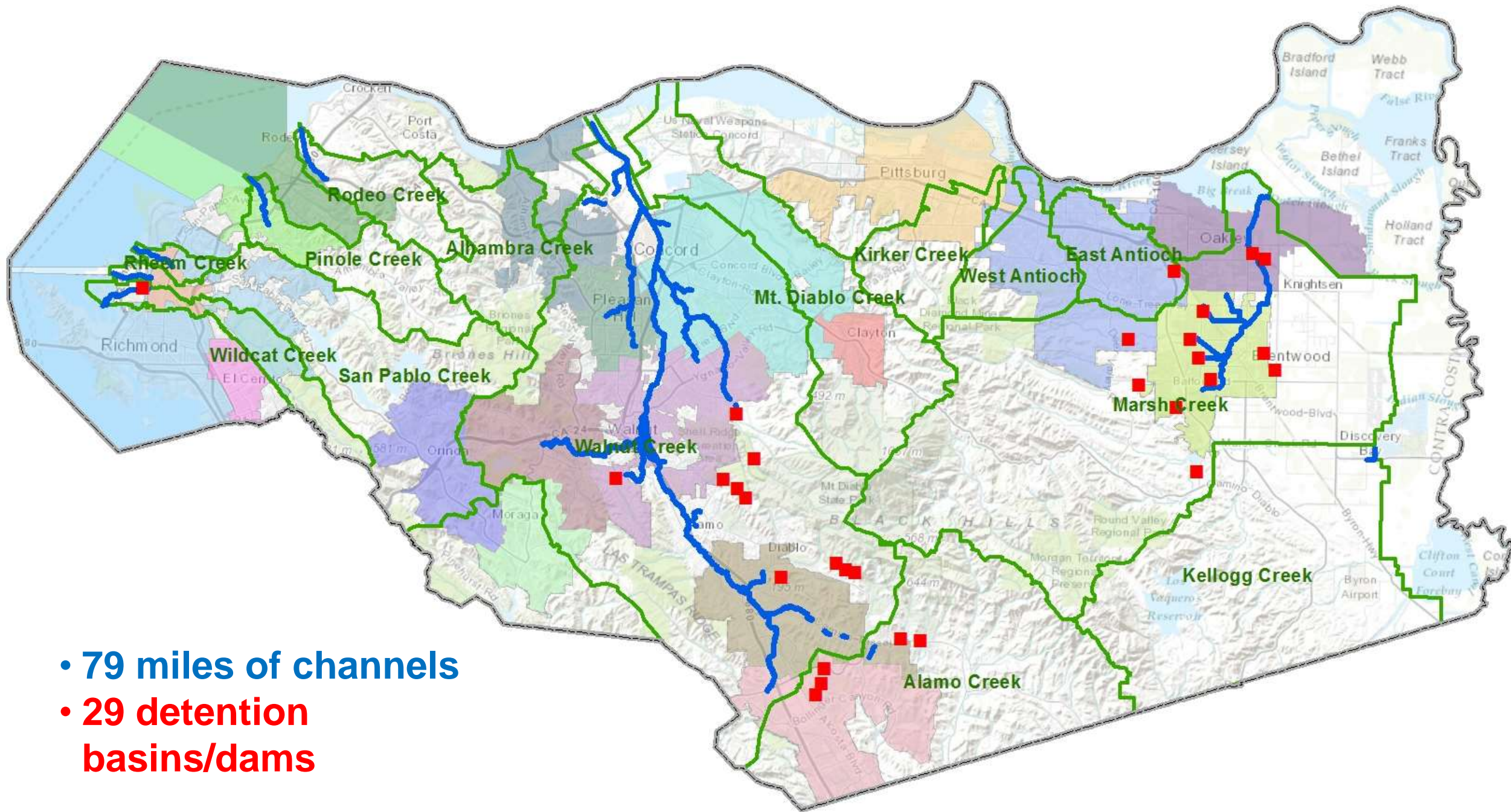
August 5, 2020



Contra Costa County
Flood Control
& Water Conservation District

Contra Costa







Grayson Creek Bank Failure

- *Left bank storm damage at levee toe.*
- *CCCSD treatment plant on other side of levee.*
- *Very high risk area.*









Experiences with PIR and Cooperative Agreement

COOPERATION AGREEMENT
BETWEEN
THE UNITED STATES OF AMERICA
and
STATE OF CALIFORNIA, CONTRA COSTA COUNTY FLOOD CONTROL & WATER
CONSERVATION DISTRICT
for
REHABILITATION OF A FEDERAL FLOOD CONTROL WORK
FOR SACRAMENTO BASIN SPRING 2019 ORDER 1 SITE

THIS AGREEMENT, entered into this ____ day of _____, 2019, by and between the DEPARTMENT OF THE ARMY (hereinafter referred to as the "Government") represented by the District Engineer, Sacramento District, U.S. Army Corps of Engineers, and the CONTRA COSTA COUNTY FLOOD CONTROL & WATER CONSERVATION DISTRICT, (CCCFCWCD) (hereinafter referred to as the "Public Sponsor").

WITNESSETH THAT:

WHEREAS, the Government constructed the Sacramento River Flood Control Project (hereinafter referred to as the Project), authorized by the Flood Control Act (FCA) of 1917, Pub. L. 64-367 § 2, 39 Stat. 948, 949 (1917), by the FCA of 1917 as amended, and governed by the local assurances as authorized and approved by the State of California;

WHEREAS, pursuant to 33 U.S.C. 701n, the Government is authorized to assist in the repair or restoration of flood control improvements threatened or destroyed by floods;

WHEREAS, via written correspondence, the Public Sponsor has requested that the Government repair or restore the project, which was damaged by recent flooding or coastal storms, in accordance with 33 U.S.C. 701n and established policies of the U.S. Army Corps of Engineers; and,

WHEREAS, Public Sponsor hereby represents that it has the authority and legal capability to furnish the non-Federal cooperation hereinafter set forth and is willing to participate in the rehabilitation effort of the authorized project in accordance with the terms of this Agreement;

NOW, THEREFORE, the Government and the Public Sponsor agree as follows:

ARTICLE I - DEFINITIONS AND GENERAL PROVISIONS

For purposes of this agreement:

A. The term "Rehabilitation Effort" shall mean work performed by the Government as described in Exhibit "A" Scope of Work, attached hereto and made a part of the agreement and as generally described in the Project Information Reports (PIR) on file in the Sacramento District Office and approved by the Division Engineer on May 02, 2018.

B. The term "Rehabilitation Effort costs" shall mean all costs incurred by the Public Sponsor and the Government, in accordance with the terms of this Agreement, directly related to implementation of the Rehabilitation Effort. The term shall include, but is not necessarily limited to: actual construction costs, including supervision and inspection costs; costs of contract



US Army Corps
of Engineers®
Sacramento District

CONTRA COSTA COUNTY, CALIFORNIA PL 84-99 SITE 1394-11 REPAIR

USACE SACRAMENTO SIGNATURE BLOCK PREPARED UNDER THE DIRECTION OF:

David G. Ray
Civil Corps of Engineers, Sacramento District

APPROVED BY:

for Rick Poppelman P.E.,
Chief Engineering Division

APPROVED FUNCTIONAL ADEQUACY:

for Scott Thatcher P.E.,
Chief Design Branch

SOLICITATION NO.: W91238-XX-X-XXXX
CONTRACT NO.: W91238-XX-X-XXXX
ISSUE DATE: NOVEMBER 2, 2018

This project was designed by the Sacramento District of the U. S. Army Corps of Engineers. The initials or signatures and registration designations of individuals appear on these project documents within the scope of their employment as required by ER 1110-1-8152

DISTRIBUTION STATEMENT A
APPROVED FOR PUBLIC RELEASE; DISTRIBUTION UNLIMITED



US Army Corps
of Engineers

PROJECT NO.

DATE

SCALE

DESIGN

CONSTRUCTION

OPERATION

MAINTENANCE

REPAIR

RECONSTRUCTION

DEMOLITION

ENVIRONMENTAL

PLANNING

DESIGN

CONSTRUCTION

OPERATION

MAINTENANCE

REPAIR

RECONSTRUCTION

DEMOLITION

ENVIRONMENTAL

PLANNING

DESIGN

CONSTRUCTION

OPERATION

MAINTENANCE

REPAIR

RECONSTRUCTION

DEMOLITION

ENVIRONMENTAL

PLANNING

DESIGN

CONSTRUCTION

OPERATION

MAINTENANCE

REPAIR

RECONSTRUCTION

DEMOLITION

ENVIRONMENTAL

PLANNING

DESIGN

CONSTRUCTION

OPERATION

MAINTENANCE

REPAIR

RECONSTRUCTION

DEMOLITION

ENVIRONMENTAL

PLANNING

DESIGN

CONSTRUCTION

OPERATION

MAINTENANCE

REPAIR

RECONSTRUCTION

DEMOLITION

ENVIRONMENTAL

PLANNING

DESIGN

CONSTRUCTION

OPERATION

MAINTENANCE

REPAIR

RECONSTRUCTION

DEMOLITION

ENVIRONMENTAL

PLANNING

DESIGN

CONSTRUCTION

OPERATION

MAINTENANCE

REPAIR

RECONSTRUCTION

DEMOLITION

ENVIRONMENTAL

PLANNING

DESIGN

CONSTRUCTION

OPERATION

MAINTENANCE

REPAIR

RECONSTRUCTION

DEMOLITION

ENVIRONMENTAL

PLANNING

DESIGN

CONSTRUCTION

OPERATION

MAINTENANCE

REPAIR

RECONSTRUCTION

DEMOLITION

ENVIRONMENTAL

PLANNING

DESIGN

CONSTRUCTION

OPERATION

MAINTENANCE

REPAIR

RECONSTRUCTION

DEMOLITION

ENVIRONMENTAL

PLANNING

DESIGN

CONSTRUCTION

OPERATION

MAINTENANCE

REPAIR

RECONSTRUCTION

DEMOLITION

ENVIRONMENTAL

PLANNING

DESIGN

CONSTRUCTION

OPERATION

MAINTENANCE

REPAIR

RECONSTRUCTION

DEMOLITION

ENVIRONMENTAL

PLANNING

DESIGN

CONSTRUCTION

OPERATION

MAINTENANCE

REPAIR

RECONSTRUCTION

DEMOLITION

ENVIRONMENTAL

PLANNING

DESIGN

CONSTRUCTION

OPERATION

MAINTENANCE

REPAIR

RECONSTRUCTION

DEMOLITION

ENVIRONMENTAL

PLANNING

DESIGN

CONSTRUCTION

OPERATION

MAINTENANCE

REPAIR

RECONSTRUCTION

DEMOLITION

ENVIRONMENTAL

PLANNING

DESIGN

CONSTRUCTION

OPERATION

MAINTENANCE

REPAIR

RECONSTRUCTION

DEMOLITION

ENVIRONMENTAL

PLANNING

DESIGN

CONSTRUCTION

OPERATION

MAINTENANCE

REPAIR

RECONSTRUCTION

DEMOLITION

ENVIRONMENTAL

PLANNING

DESIGN

CONSTRUCTION

OPERATION

MAINTENANCE

REPAIR

RECONSTRUCTION

DEMOLITION

ENVIRONMENTAL

PLANNING

DESIGN

CONSTRUCTION

OPERATION

MAINTENANCE

REPAIR

RECONSTRUCTION

DEMOLITION

ENVIRONMENTAL

PLANNING

DESIGN

CONSTRUCTION

OPERATION

MAINTENANCE

REPAIR

RECONSTRUCTION

DEMOLITION

ENVIRONMENTAL

PLANNING

DESIGN

CONSTRUCTION

OPERATION

MAINTENANCE

REPAIR

RECONSTRUCTION

DEMOLITION

ENVIRONMENTAL

PLANNING

DESIGN

CONSTRUCTION

OPERATION

MAINTENANCE

REPAIR

RECONSTRUCTION

DEMOLITION

ENVIRONMENTAL

PLANNING

DESIGN

CONSTRUCTION

OPERATION

MAINTENANCE

REPAIR

RECONSTRUCTION

DEMOLITION

ENVIRONMENTAL

PLANNING

DESIGN

CONSTRUCTION

OPERATION

MAINTENANCE

REPAIR

RECONSTRUCTION

DEMOLITION

ENVIRONMENTAL

PLANNING

DESIGN

CONSTRUCTION

OPERATION

MAINTENANCE

REPAIR

RECONSTRUCTION

DEMOLITION

ENVIRONMENTAL

PLANNING

DESIGN

CONSTRUCTION

OPERATION

MAINTENANCE

REPAIR

RECONSTRUCTION

DEMOLITION

ENVIRONMENTAL

PLANNING

DESIGN

CONSTRUCTION

OPERATION

MAINTENANCE

REPAIR

RECONSTRUCTION

DEMOLITION

ENVIRONMENTAL

PLANNING

DESIGN

CONSTRUCTION

OPERATION

MAINTENANCE

REPAIR

RECONSTRUCTION

DEMOLITION

ENVIRONMENTAL

PLANNING

DESIGN

CONSTRUCTION

OPERATION

MAINTENANCE

REPAIR

RECONSTRUCTION

DEMOLITION

ENVIRONMENTAL

PLANNING

DESIGN

CONSTRUCTION

OPERATION

MAINTENANCE

REPAIR

RECONSTRUCTION

DEMOLITION

ENVIRONMENTAL

PLANNING

DESIGN

CONSTRUCTION

OPERATION

MAINTENANCE

REPAIR

RECONSTRUCTION

DEMOLITION

ENVIRONMENTAL

PLANNING

DESIGN

CONSTRUCTION

OPERATION

MAINTENANCE

REPAIR

RECONSTRUCTION

DEMOLITION

ENVIRONMENTAL

PLANNING

DESIGN

CONSTRUCTION

OPERATION

MAINTENANCE

REPAIR

RECONSTRUCTION

DEMOLITION

ENVIRONMENTAL

PLANNING

DESIGN

CONSTRUCTION</

Martinez CA 94553
United States







Oct 2, 2019 at 9:45:30 AM
Martinez CA 94553
United States





Complete and
ready for the
winter rains!





SESSION THREE: COMPLETED PIR TO COMPLETED REHABILITATION

USACE REHABILITATION PROGRAM

Joshua Jimerfield – Sacramento District
P.L. 84-99 Program Manager
2020



**US Army Corps
of Engineers®**



PROJECT INFORMATION REPORT



What – When – Who

- Parts and pieces of the PIR
- Creation of the PIR
- Contributors to the PIR
 - Additional considerations during the PIR phase
 - Alternative Plans
 - Betterments



QUESTIONS



Contact Information:

Joshua Jimerfield

PL 84-99 Program Manager

Joshua.j.jimerfield@usace.army.mil

Work: 916-557-6974

Cell: 916-807-0026

PUBLIC LAW 84-99 WORKSHOP



Angeles Caliso, Enforcement Section Chief

Eric, Miao, Enforcement Section

August 5, 2020



Overview of Presentation

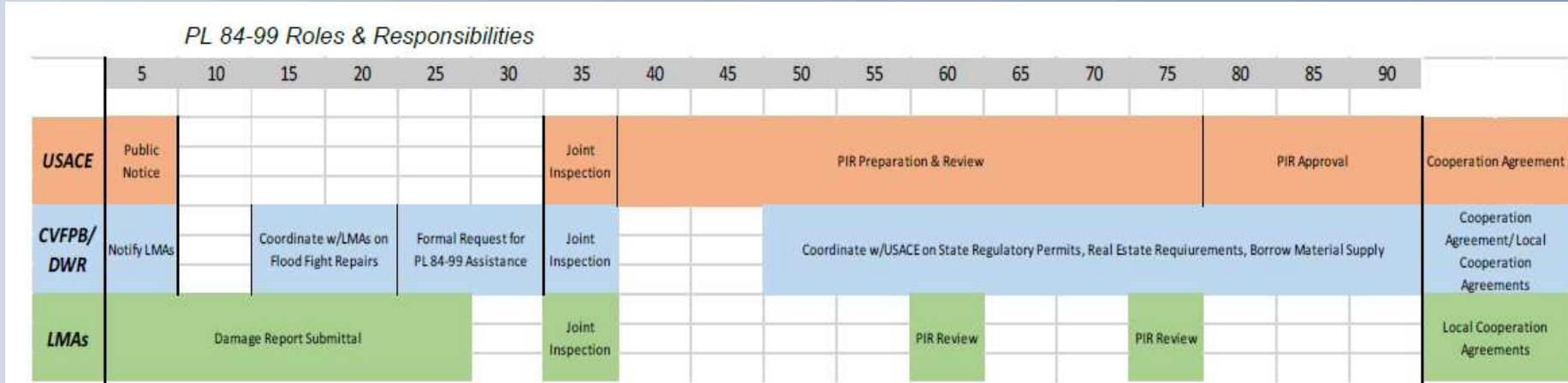
CVFPB's Role in following Key Stages:

- ◎ End of Flood to Submission of Sites
- ◎ Site Eligibility
- ◎ Repair Design thru Construction



PIR completion to Construction

- Repair Footprint determination
- Weekly coordination calls w/USACE and DWR
- Continuous updates to Locals and stakeholders
- Real Estate Branch landowner engagement & relocation of utilities
- Obtain necessary CVFPB Permits & USACE authorizations





QUESTIONS (?)

Presented by:

Angeles Caliso, Enforcement Section Chief

Central Valley Flood Protection Board

angeles.caliso@cvflood.ca.gov

(916) 574-2384

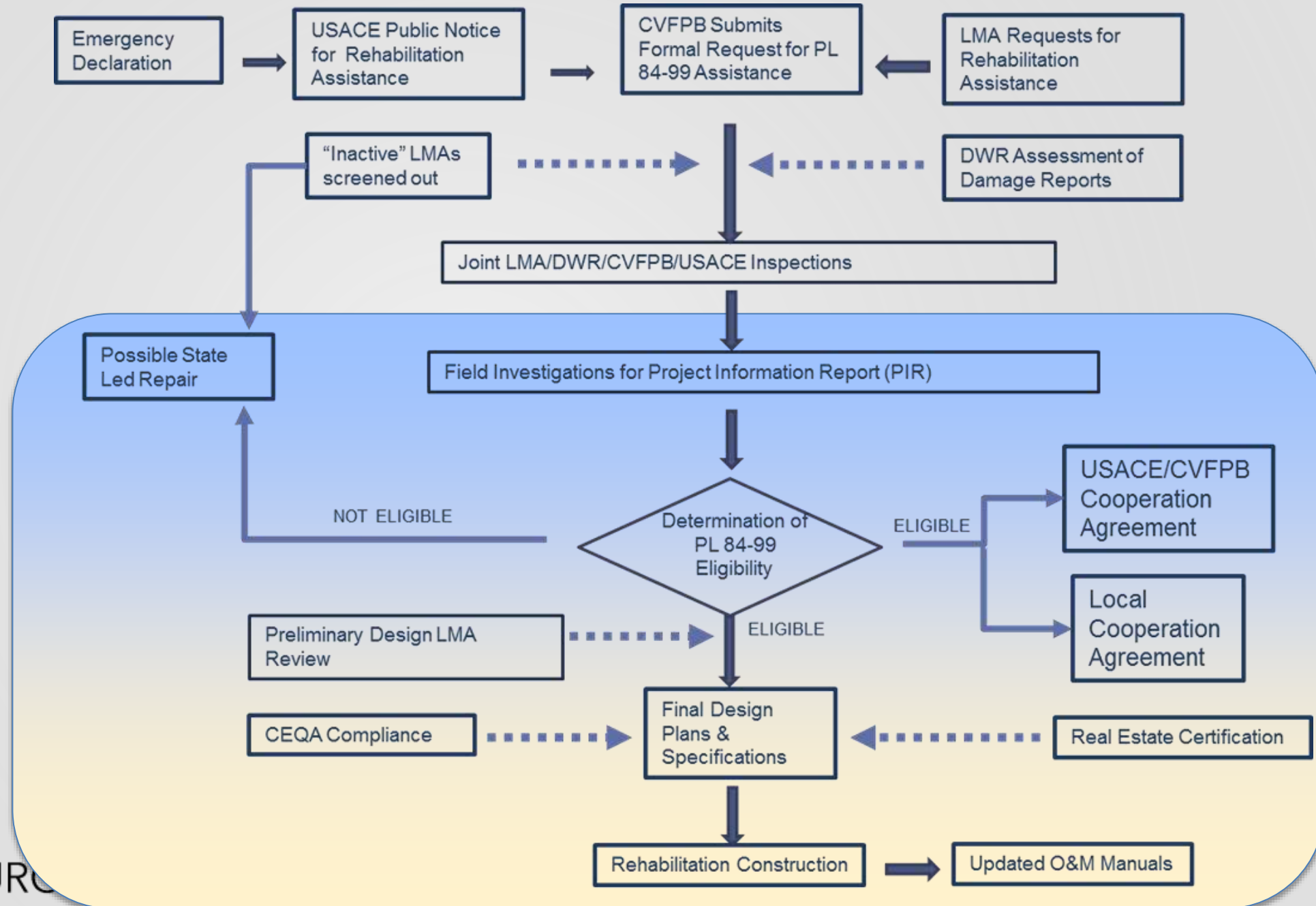
PL 84-99 Process: Completed PIR to Completed Rehabilitation

August 5, 2020

PL 84-99 Workshop

PL 84-99 Rehabilitation Flow Chart

*Final PIR to Project
Completion*



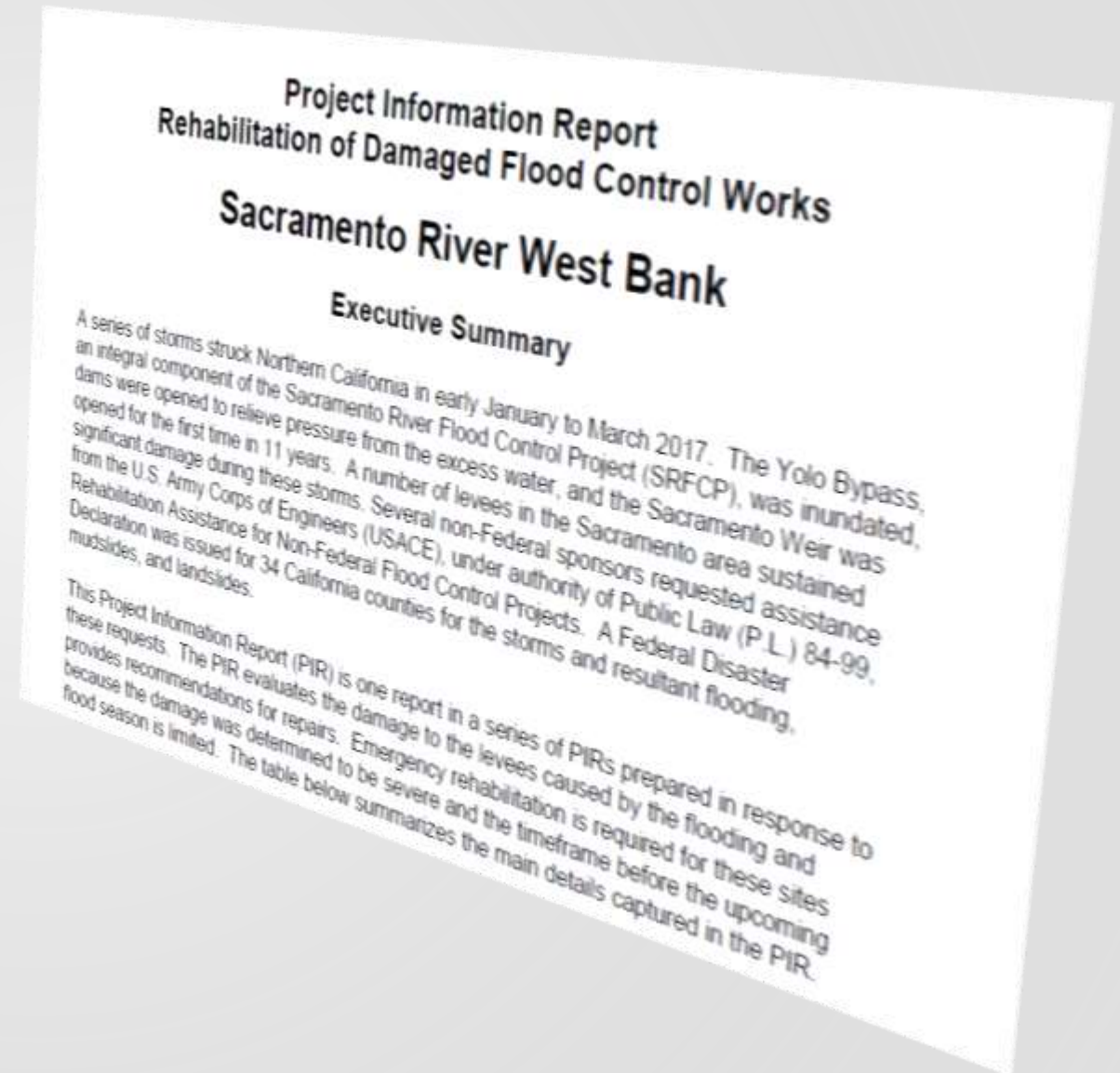
Schedule



Project Information Reports (PIR)

PIR Includes:

- Preliminary designs
- Economic analyses
- Environmental assessment
- The USACE District Command is required to finalize PIRs & get them approved by the Division Command within 90 days after issuance of Public Notice of federal assistance.



Determination of PL 84-99 Eligibility

Site Eligibility Criteria:

- District Active in PL 84-99 RIP
 - Includes LMAs with LOI/SWIF in Place
- Damage related to Specific Event
- Damage impacts levee design geometry
- Project not currently being addressed in another program
- Economically Justified



PL 84-99 Eligibility

NOT PL 84-99 Eligible:

- Possible State-Led Repair or application to another program
- Emergency contingency plans in place
- Continued monitoring by district
- LMA to address themselves
- Districts notified, can review with USACE

PL 84-99 Eligible:

- Local Cooperation Agreement Developed (CVFPB, LMA)
- LMA review and coordination of Preliminary Design
 - State requested Betterments
- Final Design Developed
- Permitting process begins
- Real Estate Certification begins (USACE take letters issued)



Betterment Request

- State determines benefit to modifying preferred USACE PL 84-99 Design
 - Setback alternative
 - Extending site lengths
 - Additional mitigation
- State to cover additional project costs beyond original USACE preferred alternative (Design, Permitting, Construction, Mitigation)
- USACE to incorporate changes to design, permitting and construction activities.



2017 PL 84-99 Eligibility Stats

USACE issued Public Notices for Damages from the for the Storm Event for the Sacramento and San Joaquin Basins*

- 50 LMAs requested rehabilitation assistance
- 366 individual sites
- USACE rejected 294 sites as “inactive” in RIP
- 27 sites identified as “no action”
 - Pre-existing damages, repair in progress through other means
- 45 Sites identified by USACE as actionable in PL 84-99 Rehabilitation Program

*all damaged sites were requested to allow for State-led repair consideration



PL 84-99 – Should I Apply?

USACE issues Public Notices for Damaged Sites, then what?

- Will this impact my ability for other sites to be repaired?
 - Gaming the economic justification approach – more sites, BC ratio goes down
- State-Led or Other Repairs
 - Programs and funding must be available
 - Repair from other State/Federal Programs
 - May have cost share requirements
 - Funding availability
 - PL 84-99 eligibility may disqualify
 - FEMA?
- Risk calculation for LMA



PL 84-99 – FEMA Application

- FEMA and PL 84-99
 - Historically, if the site is PL 84-99 eligible, no FEMA action can taken
 - Some LMAs have made progress in FEMA assistance for repairs from 2017 event
- SRWSLD pursuing assistance from FEMA
 - Repairs rejected from PL 84-99 as “Not part of the project”
 - LMA is PL 84-99 active
 - Site does not qualify for State-Led repair
 - Cost-share components
 - SRWSLD has advanced several steps in FEMA process and have not been denied yet



Project Construction

Required for ATA

- Final Plans and Specifications
- Real Estate Certification
- Environmental Permits – CEQA Compliance
- Funding

Contracting and Construction

- USACE role
- Environmental monitoring
- Tribal and Cultural Monitoring as needed
- State LERRDs related support



Post-Construction

Construction Complete

- Permit conditions met
- Haul routes returned to pre-construction conditions

Mitigation

- Mitigation Monitoring and maintenance plan enacted
- 1st year M/M part of construction contract

USACE turnover to CVFPB

- Conditions of repair have been completed
 - Mitigation in place
 - O&M Manual updated

CVFPB turnover to LMA

- Per conditions of LCA
- Site and mitigation maintenance responsibility of LMA



Last but not Least

Lessons from 2017 PL 84-99:

- Coordination of repair scope and schedule with DWR FOC for contingency plans and emergency operations.
- Coordination of PL 84-99 repairs with existing State and local repair efforts
- Frequent coordination with subject LMAs

For Next Time:

- Tribal monitoring needs and contracting determined in advance
- Increased local outreach and coordination throughout the process



Meegan Nagy

Deputy Manager

Reclamation District 108

Sacramento River West Side Levee District Knights
Landing Ridge Drainage District

Contact: mnagy@rd108.org



Completed PIR to completed rehabilitation: Local Perspective

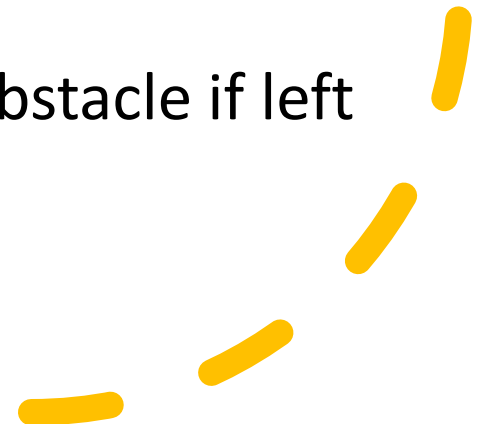
- The locals have very little “official” duties in this step other than signing an LCA with the CVFPB
- Key program for locals because if flood damages aren’t repaired under PL 84-99, we are often left holding the bag for repairs that are well outside our resources.
 - We are the ones requesting help and have to OMRR&R after the fact but are often left out of the process in between

Completed PIR to completed rehabilitation: Local Perspective

PL 84-99 is an efficient authority however when the locals are left out of the process or don't understand the process it can lead to a perception of a cumbersome and bureaucratic authority.


Completed PIR to completed rehabilitation: Local Perspective


- Locals can be your best advocates if you engage them early and often!
 - Locals typically have good relationships with the landowners
 - Locals can sometimes assist with relocations to expedite the process
 - Locals can provide the best options for haul routes, staging and disposal areas which can ultimately save time and money
 - Locals can provide design alternatives that improve local support and potentially reduce costs
 - Locals understand the problem
- Locals can seem like your biggest obstacle if left out of the process



Completed PIR to completed rehabilitation: Local Perspective

- Communication is more complicated when the Local Maintaining Agency is different from the Project Sponsor
 - The PL 84-99 process is intended to be expedited.
 - Due to this, it is imperative that the locals are engaged in the same manner as the State
 - Locals should be afforded the opportunity to attend meetings, conference calls, site visits and receive unedited meeting notes.
 - Locals should be part of the decision-making process
 - Locals need to understand the implications of every decision – specifically when it impacts funding
- Understanding site ranking criteria & its importance in national/District funding
- Understanding the timeline: ER 500-1-1

- 
- Locals should be consulted or engaged in the real estate process
 - Choosing haul routes, staging and disposal areas
 - Landowner interactions
 - Relocations



Completed PIR
to completed
rehabilitation:
Local
Perspective

Completed PIR to completed rehabilitation: Local Perspective

- Locals should be part of the design process
 - Leverage the locals in getting the design team on the ground
 - Local role in betterments decisions
 - Locals should be afforded the opportunity to understand the design process (some sites were designed quickly while others took years)
 - Locals should provide design input (lack of input for total project cost vs. lowest Fed cost)
 - Environmental compliance – being part of the process so disposal/staging areas can be optimized & considered
 - Identifying the physical project footprint – identify the responsible party and do it as soon as possible!
 - Time for review when Feds take years, we get days

Completed PIR to completed rehabilitation: Local Perspective

- Timely project close-out is imperative
 - Locals should understand the close-out process
 - Landowners talk
 - As-builts are critical
 - Landowner compensation should be timely
 - it's a team effort

Completed PIR to completed rehabilitation: Local Perspective

- Would be helpful to understand timelines for each step in the process – It's extremely difficult to keep landowners working on an "emergency" timeline when it takes years to get through design.
- Timeliness to get to construction is critical as every day that passes there are more and more storms to compete against nationwide – how can the locals assist?



CLOSING REMARKS AND OPEN DISCUSSION



YOUR PARTICIPATION

114



We want to hear from you on how to make these virtual offerings and table top exercise helpful for you. This poll will be used to determine future offerings.

Ideas? Interested in joining the planning committee?

Please put your comments in the chat or contact:

Rachael Orellana

Rachael.Orellana@usace.army.mil

(916) 557- 7009





Thank you for joining us for today's Public Law 84-99 Rehabilitation Workshop

Rachael Orellana, PE
Flood Risk Program Manager
USACE, Sacramento District

