



## Level 1 Practice Test 2017-2020

1. Fill in the blanks with the missing letter to complete the musical alphabet from low to high.

B \_\_ DEF    GA \_\_ CD    \_\_ DEFG    E \_\_ GAB    FGAB \_\_

A \_\_ CDE    CDE \_\_ G    DE \_\_ GA    GAB \_\_ D    CDE \_\_ G

2. Draw **1 HALF NOTE** in each measure in **different spaces**.

Write only **one note** in each measure!!


Draw **1 WHOLE NOTE** in each measure on **different lines**.

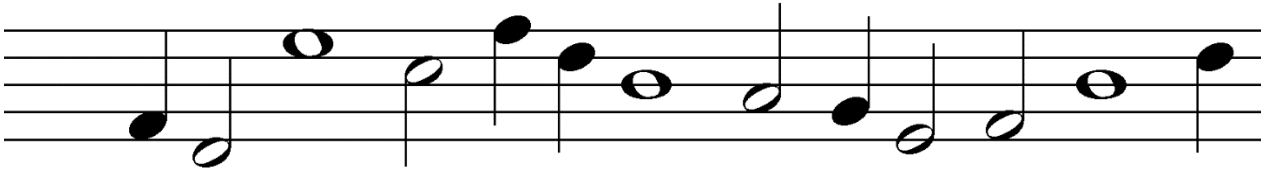

Draw **1 QUARTER NOTE** in each measure in **different spaces**.


Draw **1 HALF NOTE** in each measure on **different lines**.


3. Circle **only** the **QUARTER** notes.



4. Circle **only** the **HALF** notes.



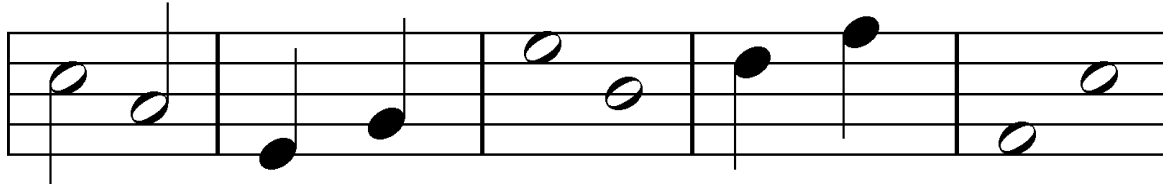
5. Circle **only** the **WHOLE** notes.



6. Circle **ONLY** the notes in **SPACES**.



7. Circle the **HIGHEST** note in each measure.



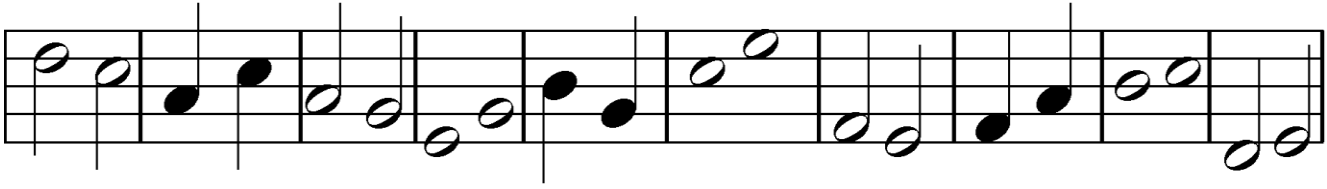
8. Circle the **LOWEST** note in each measure.



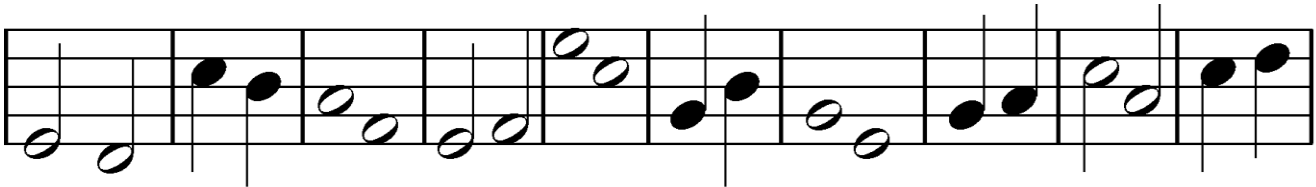
9. Circle **ONLY** the notes on **LINES**.



10. Circle **ONLY** the measures with notes that **SKIP** up or down.



11. Circle **ONLY** the measures with notes that **STEP** up or down.



12. Write the letter in the space that matches the definition.

\_\_\_\_\_ bass clef

\_\_\_\_\_ play or sing softly

\_\_\_\_\_ treble clef

\_\_\_\_\_ play or sing loudly

\_\_\_\_\_ staff



B. *f*

C.

D. *p*

E.

13. Write the letter in the space that matches the notes in the right column.

\_\_\_\_\_ Notes stepping up

\_\_\_\_\_ Notes skipping up

\_\_\_\_\_ Repeated notes

\_\_\_\_\_ Notes on lines

\_\_\_\_\_ Notes stepping down

