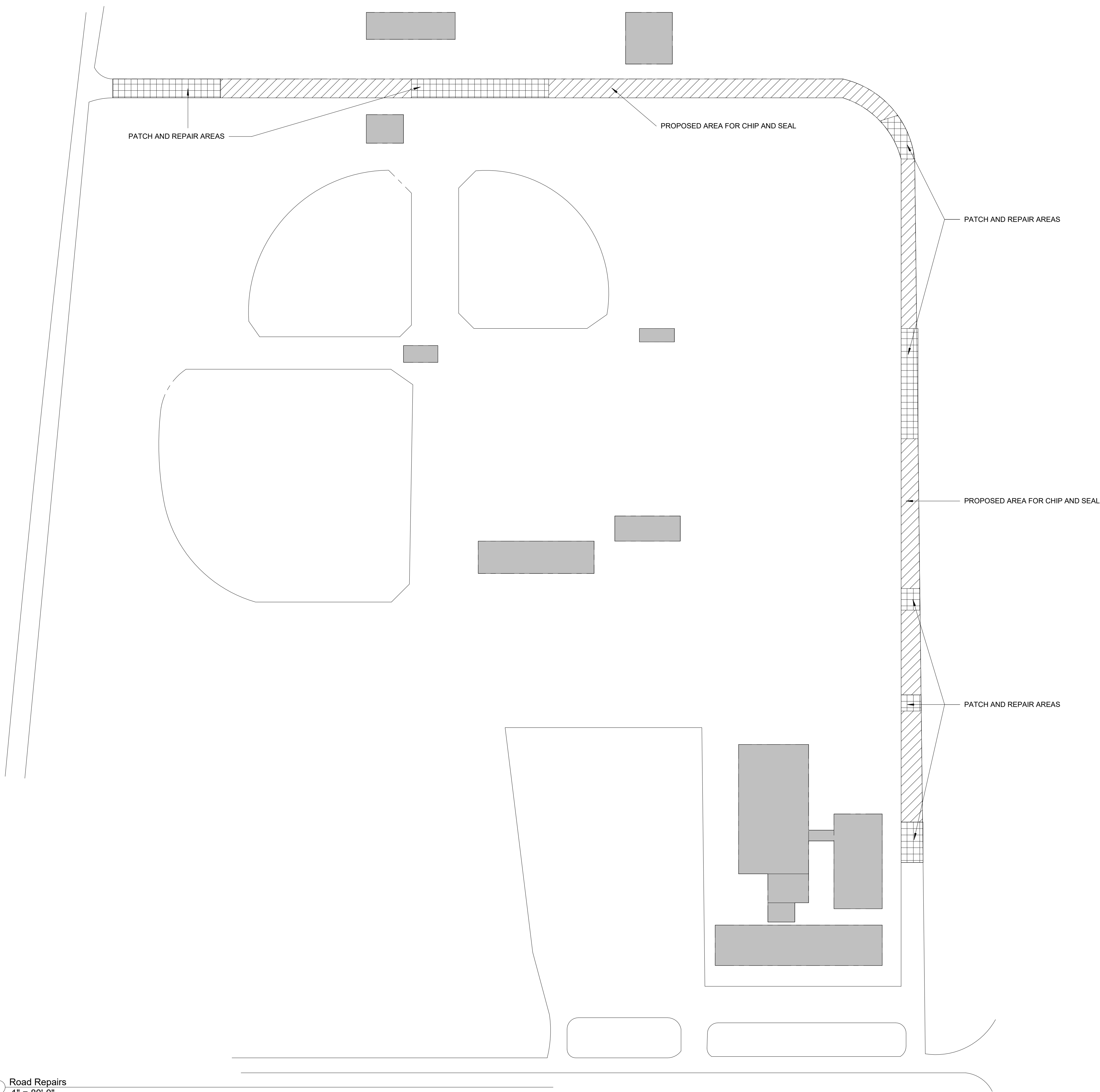
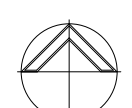


PATCH AND REPAIR TOTAL SF: 18,493 SF +/-
 CHIP AND SEAL TOTAL SF: 58,634 SF +/-

GENERAL NOTES:
 1. PATCH AND REPAIR: EXCAVATE A MINIMUM OR 8" - 10" AND PACK BACK WITH GRAVEL TO EXISTING GRADING TO PREPARE FOR CHIP AND SEAL.

CHIP AND SEAL NOTES:
 1. THE AGGREGATE SHALL CONFORM TO THE REQUIREMENTS OF 703-02, COURSE AGGREGATES EXCEPT AS MODIFIED HEREIN. THE AGGREGATE SIZE SHALL BE NO. 1ST OR NO. 1A, AS SPECIFIED. THE AGGREGATE'S FLAKINESS INDEX SHALL MEET THE REQUIREMENTS OF MATERIALS METHOD 410, "CHIP SEAL GUIDELINES".
 2. WHEN IDENTIFIED BY CONTRACT DOCUMENTS AS A HIGH VOLUME ROADWAY, THE AGGREGATE SIZE SHALL BE NO. 1ST. USE AGGREGATE MEETING ONE OF THE FOLLOWING REQUIREMENTS:
 A. LIMESTONE OR A BLEND OF LIMESTONE AND DOLOMITE HAVING AN ACID INSOLUBLE RESIDUE CONTENT NOT LESS THAN 20.0%.
 B. DOLOMITE.
 C. SANDSTONE, GRANITE, CHERT, TRAP ROCK, ORE TAILINGS, OR OTHER SIMILAR NON-CARBONATE MATERIALS.
 D. USE GRAVEL OR BLEND TWO OR MORE OF: GRAVEL, LIMESTONE, DOLOMITE, SANDSTONE, GRANITE, CHERT, TRAP ROCK, ORE TAILINGS, OR OTHER SIMILAR MATERIALS TO MEET THE FOLLOWING REQUIREMENTS:
 1. SIZE 1ST AGGREGATE. PRODUCE A FINAL BLEND HAVING NONCARBONATE PLUS 1/4 INCH PARTICLES COMPRISING AT LEAST 20.0% OF THE TOTAL AGGREGATE BY WEIGHT WITH ADJUSTMENTS TO EQUIVALENT VOLUMES FOR MATERIAL OF DIFFERENT SPECIFIC GRAVITIES.
 2. SIZE 1A AGGREGATE. PRODUCE A FINAL BLEND HAVING NONCARBONATE PLUS 1/8 INCH PARTICLES COMPRISING AT LEAST 20.0% OF THE TOTAL AGGREGATE BY WEIGHT WITH ADJUSTMENTS TO EQUIVALENT VOLUMES FOR MATERIALS OF DIFFERENT SPECIFIC GRAVITIES.



 NORTH
 ① Road Repairs
 1" = 80'-0"

ambler|architects
 an ambler|weatherly company
 510 SE Dewey Ave., Price Tower, Suite 500
 Bartlesville, OK 74003
 Phone 918.338.3512 Fax 918.338.3511 www.amblerarchitects.com

Oklahoma Union School District
Oklahoma 2018 Bond Issue- Revised
 Route 1 Box 377-7 South Coffeyville, OK 74072

ORIGINAL ISSUE: May 8th, 2019
 REVISED ISSUE
 DRAWN BY: Author
 CHECKED BY: Checker
Road Repairs

REVISION NUMBER

JOB NUMBER 170325
C201

GENERAL NOTES:

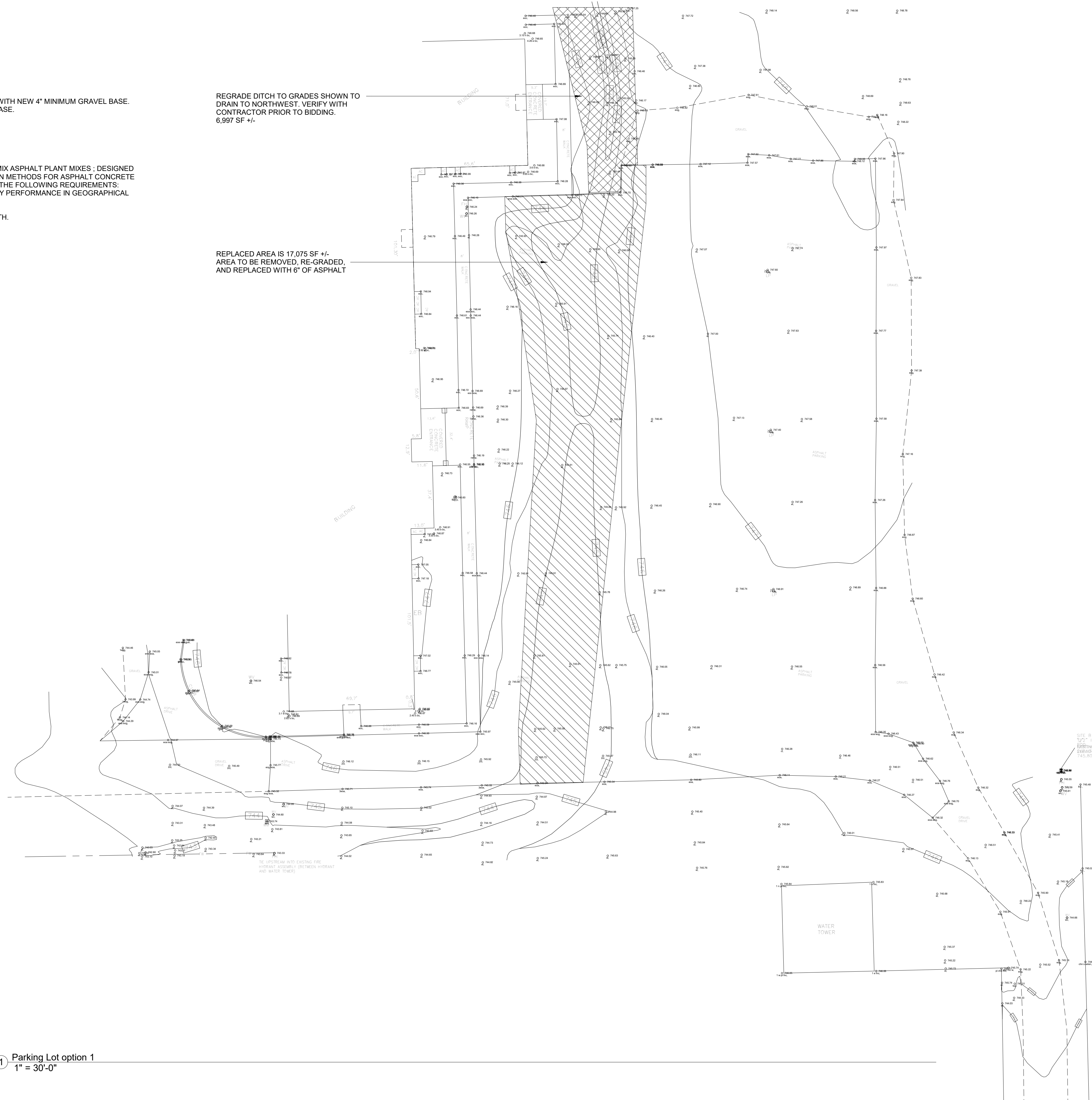
1. DEMO AREA SHOWN AND INSPECT BASE. PACK IN WITH NEW 4" MINIMUM GRAVEL BASE. 6" OF ASPHALT TO BE APPLIED ON TOP OF GRAVEL BASE.

HOT MIX ASPHALT NOTES:

- HOT-MIX ASPHALT: DENSE-GRADED, HOT-LAID, HOT-MIX ASPHALT PLANT MIXES ; DESIGNED ACCORDING TO PROCEDURES IN AI MS-2, "MIX DESIGN METHODS FOR ASPHALT CONCRETE AND OTHER HOT-MIX TYPES"; AND COMPLYING WITH THE FOLLOWING REQUIREMENTS:
1. PROVIDE MIXES WITH A HISTORY OF SATISFACTORY PERFORMANCE IN GEOGRAPHICAL AREA WHERE PROJECT IS LOCATED.
 2. BASE COURSE: TYPE "B" - THREE INCHES DEPTH.
 3. SURFACE COURSE: TYPE "B" - THREE INCHES DEPTH.

REGRADE DITCH TO GRADES SHOWN TO DRAIN TO NORTHWEST. VERIFY WITH CONTRACTOR PRIOR TO BIDDING. 6,997 SF +/-

REPLACED AREA IS 17,075 SF +/- AREA TO BE REMOVED, RE-GRADED, AND REPLACED WITH 6" OF ASPHALT



1 Parking Lot option 1
1" = 30'-0"
NORTH

ambler architects
an ambler/weatherly company
510 SE Dewey Ave., Price Tower, Suite 500
Bartlesville, OK 74003
Phone 918.338.3512 Fax 918.338.3511 www.amblerarchitects.com

Oklahoma Union School District
Oklahoma 2018 Bond Issue- Revised
Route 1 Box 377-7 South Coffeyville, OK 74072

DRAWN BY: Author
CHECKED BY: Checker

ORIGINAL ISSUE: May 8th, 2019
REVISED ISSUE

Parking lot - Option 1

REVISION NUMBER

JOB NUMBER 170325

C202

GENERAL NOTES:

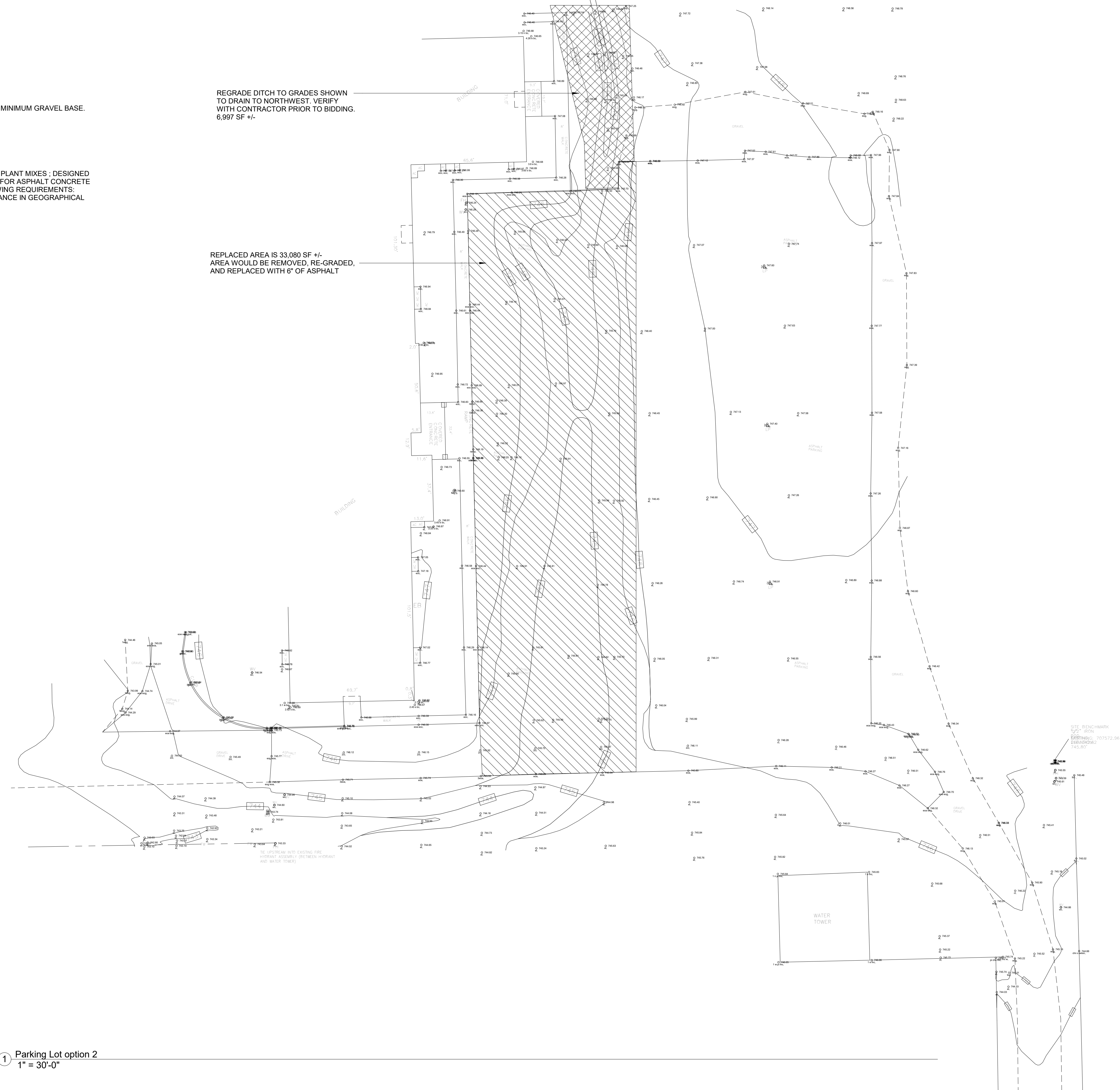
1. DEMO AREA SHOWN AND INSPECT BASE. PACK IN WITH NEW 4" MINIMUM GRAVEL BASE. 6" OF ASPHALT TO BE APPLIED ON TOP OF GRAVEL BASE.

HOT MIX ASPHALT NOTES:

- HOT-MIX ASPHALT: DENSE-GRADED, HOT-LAID, HOT-MIX ASPHALT PLANT MIXES ; DESIGNED ACCORDING TO PROCEDURES IN AI MS-2, "MIX DESIGN METHODS FOR ASPHALT CONCRETE AND OTHER HOT-MIX TYPES"; AND COMPLYING WITH THE FOLLOWING REQUIREMENTS:
1. PROVIDE MIXES WITH A HISTORY OF SATISFACTORY PERFORMANCE IN GEOGRAPHICAL AREA WHERE PROJECT IS LOCATED.
 2. BASE COURSE: TYPE "B" - THREE INCHES DEPTH.
 3. SURFACE COURSE: TYPE "B" - THREE INCHES DEPTH.

REGRADE DITCH TO GRADES SHOWN TO DRAIN TO NORTHWEST. VERIFY WITH CONTRACTOR PRIOR TO BIDDING. 6,997 SF +/-

REPLACED AREA IS 33,080 SF +/- AREA WOULD BE REMOVED, RE-GRADED, AND REPLACED WITH 6" OF ASPHALT



1 Parking Lot option 2
1" = 30'-0"

ambler|architects
an ambler|weatherly company
510 SE Dewey Ave., Price Tower, Suite 500
Bartlesville, OK 74003
Phone 918.338.3512 Fax 918.338.3511 www.amblerarchitects.com

Oklahoma Union School District
Oklahoma 2018 Bond Issue- Revised
Route 1 Box 377-7 South Coffeyville, OK 74072

ORIGINAL ISSUE: May 8th, 2019
REVISED ISSUE
DRAWN BY: Author
CHECKED BY: Checker
Parking Lot - Option 2

REVISION NUMBER

JOB NUMBER 170325

C203