

RANGE
STANDARD OPERATING PROCEDURES
(SOP)

Wildlife Action
Pee Dee, South Carolina Chapter
5821 Albany Road
Coward, South Carolina, 29530

Revised 12/5/17

Effective 1/1/18

An electronic version of this SOP may be accessed at www.wildlifeactionpeedee.com

A hard copy is also kept in the Rifle Range sign-in booth

Table of Contents

CHAPTER 1:
Preamble.....pg 2

CHAPTER2:
Constitution..... pg 3

CHAPTER 3:
Organizational Chart..... pg 4

CHAPTER 4:
Safety Plan..... pg 5

CHAPTER 5:
Range Operations..... pg 6-16

CHAPTER 6:
RSO / CRSO Training & Responsibilities.....pg 17

CHAPTER 7:
Guest and Membership Policypg 18-19

APPENDIX 1:
Outdoor Range Inspection Guide..... pg 20

APPENDIX 2:
Range Safety Briefing..... pg 21-22

APPENDIX 3:
Emergency Report Sheet..... pg 23-24

APPENDIX 4:
Injury Report Form..... pg 25-28

APPENDIX 5:
Sign In-Out Sheet / Hold Harmless Agreement pg 29-30

Revision History pg 31

CHAPTER 1: Preamble

Whereas Wildlife Action is a private nonprofit 501 c(3) tax exempt conservation organization founded in Marion, South Carolina in 1977.

Whereas Pee Dee Chapter range access is limited to WLA members current with their local annual Park Fees and their guests, there are special events open to the public. These events typically include CWP courses, RSO courses, Outdoor Appreciation Day, Hunter Education, Manufacturing Days, Marksmanship Training classes, and other similar events. Donations may be solicited for guests or special events

Whereas Pee Dee Wildlife Action wants to assure operating range safety, the Officers and Board of Directors of Pee Dee Wildlife Action has determined instituting and maintaining a set of Standard Range Operating Procedures to be desirable.

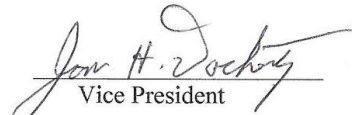
Therefore, the Officers and Board of Directors of Pee Dee Wildlife Action has adopted this Standard Range Operating Procedure to establish a minimum standard requirement for any user of the Pee Dee Wildlife Action range located at 5821 Albany Road Coward, South Carolina

This Standard Range Operating Procedure will be reviewed for updates on a date set by the Officers and Board of Directors of Pee Dee Wildlife Action .

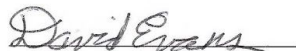
This SOP revision is approved and signed this 5th day of December in the year 2017. This SOP becomes effective on 1/1/2018.



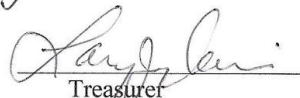
President



Vice President



Secretary



Treasurer



Chief Range Safety Officer

CHAPTER 2: Constitution

Pee Dee Wildlife Action, 5821 Albany Road Coward, South Carolina

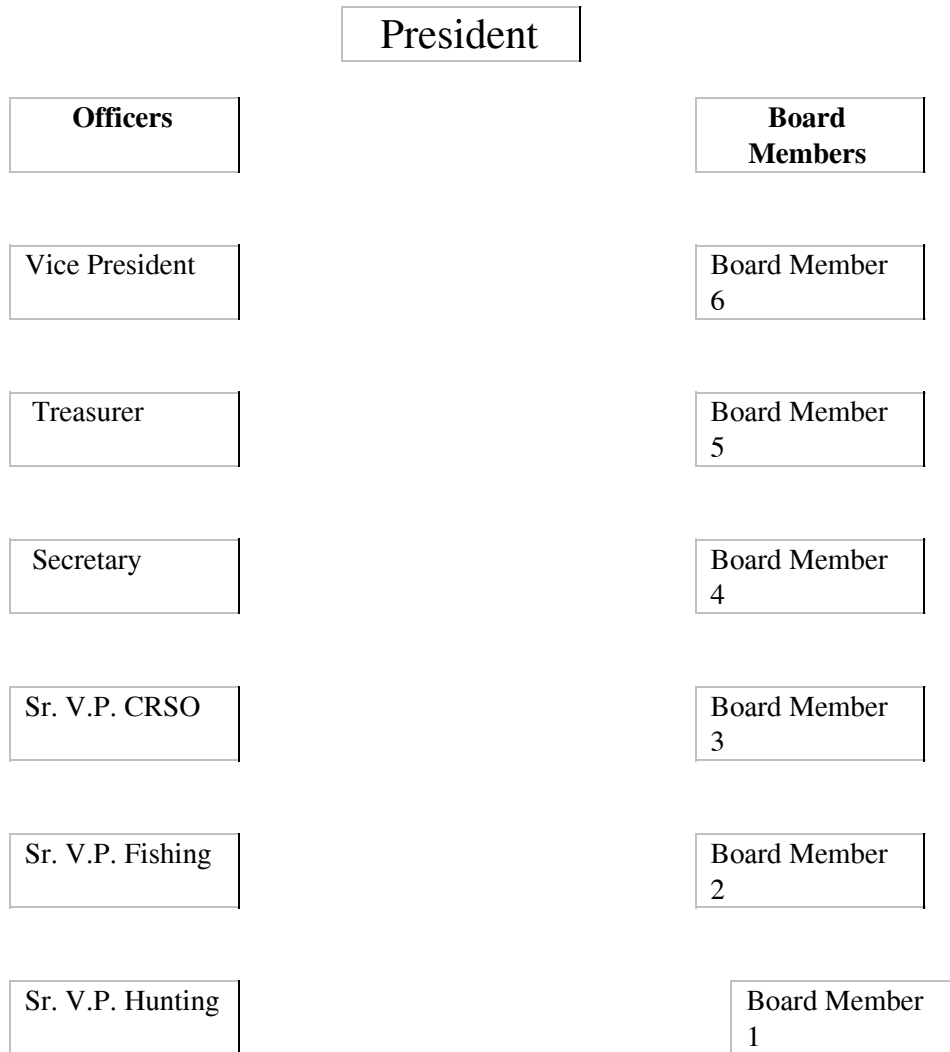
An Executive Committee governs the Pee Dee Chapters interests with Board meetings held once a month. The Executive Committee consists of the following officers: President, Vice President, Secretary, Treasurer, Sr. Vice President CRSO, Sr. Vice President Fishing and Sr. Vice President Environment with six (6) board members. These officers and directors are elected annually for a term of one (1) year.

The Executive Committee has established that the Chief Range Safety Officer (CRSO) is charged with the overall operation of the range.

The objectives and beliefs of the organization are to:

- Raise Public Awareness to diminishing wildlife habitat
- Protect rivers and wetlands from unnecessary destruction and development
- Work to reduce poaching, trespassing and other illegal and inconsiderate outdoor activities and encourage improved behavior of irresponsible outdoor users
- Educate all people, hunters & non-hunters, that our natural resources belong to everyone and that all should share in the cost & benefits of perpetuating them
- Obtain facts on legitimate issues and bypass emotional causes
- Don't just criticize, offer viable alternatives to problems
- Support the right to keep and bear arms
- Share with our youth the outdoor traditions that we have enjoyed and together work to protect those traditions for future generations
- Continue to help "Local Folks Solve Local Problems"
- "To Put Back More Than We Take"

CHAPTER 3: Organization Chart



CHAPTER 4: Safety Plan

Emergency Procedures

- Take charge of the situation.
 - Cease firing, unload.
 - Evaluate the situation.
 - Determine if the injury is a minor or major injury.
 - Designate helpers, if necessary.
- Render Aid.
 - Training and equipment
 - First aid.
 - The first aid kit is located inside the sign-in booth at the Rifle range
 - Determine level of care (Do you Treat or call for help?).
 - Gather information for emergency phone call.
- Call for help
 - Phone numbers are listed in Appendix 3
 - Give dispatcher necessary information.
 - Location (5821 Albany Road, Coward SC)
 - Phone number
 - Your name.
 - What happened.
 - Number of people injured.
 - Condition of injured.
 - Location of person who will direct help to the scene.
- Direct help to the location.
 - Position one or more persons to direct the emergency vehicle.
 - On the main road to the entrance of the facility.
 - On the road to the range.
 - Outside the building.
- Take notes (Reports).
 - Take notes on the times actions were taken.
 - Get statements from witness(es) and quarantine from each other.
 - Complete the required SOP's form. (Appendix 3&4)
 - Notify authorities if necessary.
- If there is a local emergency not connected with the range, all personnel and patrons shall be kept inside the range proper until such time as an all clear is given.
- If appropriate, a media spokesperson will be designated by the Board.
 - Individual members are requested to refrain from media comment.

CHAPTER 5: Range Operations

Purpose of this Standard Operating Procedure.

This Standard Operating Procedure (SOP) is intended to provide a consistent and documented set of rules that govern the range safety officers and serve as minimum guidelines to be followed by all users of the range facilities. Adherence to these rules, regulations and policies helps ensure the continued safety of the range users and adjacent neighbors.

The use of the range facilities at the Pee Dee Chapter of Wildlife Action (PDWLA) is a privilege, and the use of firearms is an inherently dangerous activity. Your activities and actions must always be conducted in a manner that is consistent to safeguard yourself and others against harm or injury, and property against damage or destruction. Adherence to this SOP will protect the lives and safety of all, and preserve your privilege. **Safety is never to be compromised.**

Range Capabilities.

The range governed by this Standard Operating Procedure is composed of three (3) separate outdoor shooting sub-ranges referred to as follows:

The Skeet Range is open to only shotguns.

No other firearms are permitted on this range.

The 25 yard Pistol Range is open to any center or rim fire pistols.

No other firearms are permitted on this range with the exception of specified firearms allowed by the Board for Pee Dee Wildlife Action approved events

The 10yard / 25 yard / 50 yard and 100 yard pistol and rifle range are open to rifles and pistols. For purposes of the SOP, this range is referred to as the Rifle Range. No other firearms are permitted on this range.

Range Operations

The Pee Dee Wildlife Action range is designed to provide access to members who can utilize live fire to become more proficient with firearms.

All Users of the Range

- All RSOs, shooters, and spectators must sign in and sign out of specified range (Make sure to read Conditions when signing).
- Shooters will conduct themselves in an orderly manner at all times and will be responsible for the conduct of any guests they bring.
- All shooters are responsible for their own firearms and ammunition while on the premises.

Range Operations - continued

- Uncased or unholstered firearms not being fired must be benched or racked
 - Actions must be open
 - Chambers must be empty
 - Muzzles must be pointed in a safe direction
 - Magazines or clips must be removed
 - No live or spent ammunition remaining on any part of the firearm
- Do not point firearms at anything except authorized targets.
- Fire at your own target only.
- Give the command “Cease Fire” should an unsafe condition occur.
- Follow the instructions of the RSO.

Alcoholic Beverages and Drugs

Individuals shall not be under the influence of alcoholic beverages, illegal drugs, or drugs that impair judgment (including prescription and over-the-counter medications) before or during live firing. The RSO **shall deny** range access to anyone deemed to be under the influence

Medical Support

In the event of a Medical situation, notify the RSO immediately. Additional information is located in Emergency Procedures Section of this document.

General Range Commands / Standard Firing Line Commands at Wildlife Action

“Cease Firing.” Given when time has expired or at any other time that firing must cease. At this time stop firing immediately. Generally the RSO gives this command, but anyone can give this command if the situation warrants

“Bench your firearm with action open” unload your firearm, place it on the bench / table in front of you with the muzzle pointed downrange and open the action so the RSO can verify the safe condition. (If the action will not stay open an empty chamber indicator, flag, pencil, or some other means can be used to have it in a safe condition which can be checked by the RSO). Magazines or clips must be removed. RSO gives this command.

“The Range is Cold” means that no activity is to take place with firearms. The RSO gives this command. All firearms are benched, with actions open and ejection ports up. No one is allowed to handle firearms when the range is cold. During this period, once the RSO has verified benched firearms and open actions, the shooters may go downrange to hang or check targets, pick up brass or take care of any other issues. Again, no firearms are to be handled at all, including placing in cases or removing from cases. On the Rifle Range after firearms have been verified clear, individuals are to physically vacate the bench area red zone. Also on the Rifle Range the Green Light will be illuminated and horn will sounded to indicate change of status (by RSO).

“3 Minute Prep Time” command will be used by the RSO for shooters to uncase (recase) and handle firearms at the firing line. No one is forward of the firing line. **Firearms remain unloaded with actions open, and magazines or clips unattached during “3 Minute Prep Time”.**

“The Range is Hot” means that the range is staged for live fire. Firearms may be loaded at this time. The RSO gives this command. No one is to go forward of the firing line. As always, the muzzles are to be pointed in a safe direction. On the Rifle Range, the Red Light will be illuminated and horn will be sounded to indicate change of status (by RSO). **“Commence Fire” command by the RSO is the signal to begin live fire**

Shooting Range rules and regulations

The Range rules and regulations are broken down into

- A. General Rules,**
- B. General Range Rules**
- C. Firearm Safety Rules,**
- D. General Range Safety Rules,**
- E. Hygiene Guidelines and Special Concerns**
- F. General outdoor range rules**
- G. Individual sub-range specific rules**
- H. Muzzleloading specific rules**
- I. Administrative rules and policies**

A. General Rules

- All Federal, State, and Local laws are to be followed
- The front gate is to remain open while the range(s) are in use.
- Range RSO has the authority to limit the number of shooters or lanes in use.
- Range RSO has the authority to limit the number of shooters or individuals in a lane
- At no time is a Range RSO to supervise more than 1 range.
- Range RSO must be on duty or designated before a range can be operated
- RSO, shooters, and spectators sign in and sign out must be range specific (Appendix 5 column 5)

A. General Rules-continued

- Beginning in 2018, PDWLA issued name tags must be worn by RSOs and Park Members if using the range facilities. These color coded name tags will be issued each calendar year after all fees are paid and RSO certifications verified.
- Unless the RSO is on the range alone, the Range RSO is not permitted to shoot. All rules and practices apply. Note: Solitary shooting is not a best practice
 - Each range shall be posted with applicable range safety rules and operating procedures.
 - No alcohol will be permitted on any of the range facilities.
 - All forms of illicit drugs, including but not limited to marijuana, depressant or stimulant drugs, or narcotic drugs, are banned from any and all facilities.
 - The primary Range Safety Officer (RSO), or his/her designee, shall be responsible for range safety and enforcement of all range safety rules.
 - The primary Range Safety Officer has the authority at any time to request a demonstration of an individual's ability to safely fire any firearm in question being fired at a rate of fire determined to be too rapid.
 - The primary Range Safety Officer can declare rapid fire as excessive and has the authority to require a slower rate of fire.
 - Persons showing signs of alcohol or drug usage shall be barred from handling any firearms.
 - Persons not complying with the range safety rules will be asked by the RSO to leave the firing line or to leave the range depending upon the severity of the infraction.
 - The RSO shall be identified by introducing him or herself to all participants.
 - Handling of any firearm for any reason is **not permitted** while **anyone** is downrange.
 - All shooting immediately stops upon the command "**Cease Fire.**"
 - Only the primary Range Safety Officer shall have the authority to restart shooting activity after a "Cease Fire" has been called.
 - Any other individual (that is not the primary RSO) issuing the "Commence fire" command shall be considered in violation of this Standard Operating Procedure and shall be asked to vacate the range facility. Any individual refusing to vacate the range shall be turned over to law enforcement personnel to be escorted from the range facility as a trespasser.
 - Loaded Firearms that have malfunctioned, notify the RSO while pointing the muzzle in a safe direction.

B. General Range Rules

- Un-cased or unholstered firearms must be unloaded with the actions open with all clips or magazines removed, and no live or spent ammunition remaining on any part of the firearm at all times while on the property, except when at the firing line preparing to shoot. (range is “HOT”)
- It is the duty and responsibility of each individual that observes an improper or unsafe action at the facility to discreetly bring it to the attention of the Range Safety Officer
- No automatic firearms or the use of devices that replicate automatic fire are allowed
- Extremely rapid firing is not allowed.
Maximum rate of sustained fire is not more than one shot per second.
- Tracer or Incendiary ammunition is not permitted
- No 50 caliber or larger rifle ammunition other than black powder rifle rounds
- All shots will be directed downrange at proper targets in designated areas.
- Only paper targets will be used or Pee Dee Wildlife Action installed bowling pins / steel plates. Pee Dee Wildlife Action Club events may use small tumblers or similar targets on specified ranges
- No explosive targets are permitted
- All shooters under the age of 18 must be accompanied by an adult and be under their direct supervision while shooting or handling firearms.
- Eye and Ear protection is required for all shooting activities involving firearms.

C. Firearm Safety Rules

Rules of Safe Shooting

ALWAYS keep the firearm pointed in a safe direction.

ALWAYS keep your finger off the trigger until ready to shoot

ALWAYS keep the firearm unloaded until ready to use.

Rules of Safe Handling

Know your target and what is beyond.

Be sure the firearm is safe to operate.

Know how to use the firearm safely.

Use only the correct ammunition for your firearm.

Wear ear and eye protection as appropriate.

Never use alcohol or drugs before or while shooting.

Always store firearms so that they are not accessible to unauthorized persons.

Certain types of firearms and many shooting activities require additional safety precautions.

D. General Range Safety Rules.

Know and Obey **all** range rules.

Know where others are at all times.

Shoot only at authorized targets.

Do not handle a firearm or stand in front of the firing line where firearms are present while others are downrange.

Stop shooting immediately upon the command “**CEASE FIRE.**”

E. Hygiene Guidelines and Special Concerns

Refrain from eating, smoking, applying makeup, or placing your hands in the proximity of your mouth or nose while on the range

Cleaning firearms is only permitted on the firing line. Range must be Hot.

Ensure that you wash your hands thoroughly with lead-removing wipes and/or soap and cold water if you decide to eat, drink, smoke, apply makeup, or place your hands in the proximity of your mouth or nose, and prior to leaving the facility.

Wash and restroom facilities are located in the training trailer

Change and wash clothing after a shooting or firearm cleaning session to minimize exposure to airborne lead or solvent and cleaning product residues.

Pregnant women and others who have health concerns should consult a physician before visiting shooting ranges.

F. General Outdoor Range Rules

Shooting Ranges

Shotgun Usage

Only shotgun use is permitted on the Skeet Range. No other type firearms are allowed on the Skeet Range. Shotgun use is limited to the Skeet Range only

General Usage

Pistol Range is open to center fire or rimfire handgun & black powder pistols

Rifle range is open to center fire, rimfire, and black powder firearms.

All projectiles must impact the backstop berm unless it is a Pee Dee Wildlife

Action approved event using specified ground positioned tumblers or similar targets on specified range(s)

G 1. Pistol Range Specific Rules

- No other firearms are permitted on this range with the exception of specified firearms allowed by the Board for Pee Dee Wildlife Action approved events.
- RSO has the discretion to move the shooter to the Rifle Range if using high powered rounds
- Drawing and shooting from a holster is permitted only on the Pistol Range and only under the following conditions:
 - Cleared with RSO first
 - Remove tables or other obstructions between firing position and target
 - Only belt holsters on same hip as shooting hand or front pocket holsters on same side as shooting hand are allowed
 - Only one person at a time and only shooter on the range unless:
 - Pee Dee Wildlife Action approved CWP training is being conducted that permits multiple students to draw and fire
 - Keep finger off trigger unless sights are on target and you are ready to shoot
 - Must be stationary while drawing, shooting, or reholstering
- Shooting at authorized metal targets requires 15 yd minimum distance.

G2. Rifle Range Specific Rules

- Red light is used by the RSO to indicate range is HOT
- Green light is used by the RSO to indicate range is Cold
- Horn is sounded by the RSO to indicate range status is changing
- RSO maintains control of opening and closing the white gate between the firing line and target area
- Shooting at authorized metal targets is only permitted at 100 yd distance unless it is a Pee Dee Wildlife Action approved event using specified ground positioned tumblers or similar targets

G3. Skeet Range Specific Rules

- Skeet Range RSOs must have completed PDWLA Skeet Range Certification to use or operate the Skeet Range facility. This training will cover all the range rules and regulations as well as proper use and operation of the Skeet Range. This training is conducted by individual(s) designated by the PDWLA Board.
- Downrange target area must be checked for people before firing commences. Know where others are at all times.
- Action must be open and shotgun completely unloaded, and racked until ready to use at a shooting station. Completely unloaded shotguns have the magazine removed, and all shells or hulls removed from any part of the shotgun.

G3. Skeet Range Specific Rules -continued

- Only legal modern day 12, 16, 20, 28 or .410 gauge shotguns are allowed.
- Must use 6 -9 size shot unless patterning
- Ground elevation pattern target may be set up by request. Heavy loads to be coordinated with the RSO
- During a cease fire shotgun is completely unloaded, action is open, and then racked
- If a shotgun or trap malfunction occurs or the house runs out of birds a cease fire must be called. Shotguns must be completely unloaded and action open before any shooter steps off the stations or before anyone traverses the range beyond the safety zone. Safety zone is defined by the line connecting the front edge of the shooting stations and goes behind the immediately adjacent trap houses. **To access the berm area for the high house requires both the Skeet Range and the adjacent Pistol Range be made “Cold”**
- If a shell misfires, keep the shotgun pointed downrange for a minimum of 30 seconds before unloading. Do not place the misfired shell in your pocket or pouch
- Only clay targets may be used on the Skeet Range. Clay targets may be commercially purchased and brought to the range (please don't shoot more than you bring) or purchased from PDWLA at a cost per round (25 targets) at a price determined by the Board.
- All persons on the Skeet Range will refrain from passing or conducting activities in front of the open trap house window where one may be in danger of being struck by a clay target.
- Only members who have been successfully completed PDWLA RSO Skeet Range training may enter the trap houses. Under no circumstances are any guests, or other persons who have not been trained and certified to enter the trap houses, load clay targets, open trap house windows, retrieve objects from inside the trap houses, or operate trap machines.
- Housekeeping must be performed after completing your shooting. (range is “Cold”) Hulls must be picked up and disposed of in an appropriate manner. Empty Clay boxes and other containers must be removed and placed in the trash container
- After shooting & before leaving the Skeet Range (done by PDWLA Skeet Range RSO)
 - Roll up release cord and store it in the Low house
 - Turn off the power to the trap machines
 - Release the arms of the trap machines (**Use Caution - stored mechanical energy**)
 - Sweep out the trap houses
 - Close and lock trap house windows and doors
 - Verify storage trailer is locked closed

H. Muzzleloading Safety Rules

- All Range commands must be obeyed at all times.
- Flintlock shooters are to inform the other shooters when ready to shoot.
Generally this is accomplished by loudly stating “Flint”
- Smoking is prohibited, except in designated area
- Bulk Powder must be capped and stored at storage table
- Charge black powder, cap, and prime only at the firing line. Range must be Hot.
- Powder must be loaded into the firearm by means of a single charge measure.
- Pouring powder from flask, horn, or other large container is prohibited.
- Never discharge muzzle loading firearms over or near a loading bench.
- Load muzzle loading firearms only with black powder or an authorized substitute such as Pyrodex.
- Once muzzleloader is capped or primed, the muzzle must be pointed at the target area.
- **DO NOT “BLOW” DOWN THE BARREL TO EXTINGUISH SPARKS.**
- The barrel is recommended to be swabbed with a damp patch between shots to kill any live sparks that may remain in the bore.
- After two falls of the hammer or cock and no main charge ignition it is considered a malfunction:
 - Un-cap or dump the pan,
 - Keep the muzzle pointed down range,
 - Shooter to remain in position for three minutes (3) in case of a hang-fire.
 - Inform the RSO.

I. Administrative Rules & Policies

- The shooting or harassment of any animal is strictly prohibited. Violators of this rule will be ejected from the facility at the discretion of the Range Safety Officer and must petition the Executive Committee within 30 days of violation
- All shooters under 18 years of age **must** be accompanied by an adult or legal guardian of at least 21 years of age, and be under that adult’s direct supervision while shooting.
- **Pistols are not to be used at PDWLA ranges unless the shooter is at least 18 years of age. Only exception if the pistol shooter is less than 18 years of age, the RSO must be the parent (or legal guardian) and be providing instruction to the shooter.**

I. Administrative Rules and Policies -continued

- Remove all trash when leaving the range. Ensure trash is properly disposed of in the correct receptacles. Carting bagged trash or general debris to the county refuse facility for proper disposal is appreciated
- Facilities must be left in a clean and orderly condition after their use.
- Organized club functions may have the priority in the usage of the ranges. (Check the calendar for status).
- Range shooting hours are Monday thru Saturday 9 am until sundown. Sunday is from 2:00pm until sundown. RSO must be on duty or designated. Proper sign-in and sign-out is required by everyone. No shooting during a scheduled meeting or scheduled workdays
- All parking will be in designated areas.
- Range Activities are scheduled on the Club master calendar. Calendar is located on the web at www.wildlifeactionpeedee.com Range activity scheduling takes place either at the Monthly Chapter meeting or by presenting a request to the Club Board of Directors.

Enforcement:

Educate to reduce incidents from occurring.

Warning

Warning shall be of the form that politely describes the breach of rules and a polite request for adherence.

Penalties:

Individual may be politely asked to exit the range.

An individual that refuses to exit the range shall be informed that the County Sheriff will be contacted to remove the individual from the range.

Remediation training may be appropriate

Serious infractions may result in suspension of range privileges being revoked without a refund

I. Administrative Rules and Policies -continued

Range Opening & Inspection Procedures

Primary RSO is to arrive about 15 Minutes before the scheduled event
Sign in the appropriate range usage logbook.
Conduct the daily range safety inspection. (Appendix 1)
Provide access to equipment for the firing line. This includes staplers, ear / eye protection/ restroom facilities and first aid kit.
Review Range Standard Operating Procedures (This Document)
First Aid Kit should be sealed until ready to use.
Report any missing / outdated items to the Chief Range Safety Officer

Check-in Procedures

All attendees need to sign in when they arrive and sign out just before leaving.
Each non-member participant is encouraged to make donation at time of signing in.
Range safety briefing should be performed at this time

Equipment/facility maintenance

Report any damage to the range or equipment to the Chief Range Safety Officer

Range close down procedures.

Ensure that no personnel are remaining on the range and all have signed out.
Remove all equipment from the firing line and secure it within the sign-in booth
RSO is to verify power to Rifle Range status lights and horn is switched off at sign-in booth
Perform any needed housekeeping
Sign out, then lock up storage buildings, Training Center, and park swing gate(s)
locked closed

Range Safety Briefing

All individuals shall have a daily Range Safety Briefing prior to using the range. Shooters who are current RSOs are exempt from this requirement, but are still responsible for compliance to all range safety rules and procedures. Remember each active range still requires a designated RSO who is not permitted to shoot unless he or she is alone on that range ... See Chapter 5 Section A General Rules
If an individual moves to a different range, that person must sign out of the current range and sign into the new range. Range inspection or an additional Safety Briefing by the RSO may be required. Discuss this with the RSO.
Examples of the Range Safety Briefing are included in Appendix 2
All members shall assist the Range Safety Officer with helping guests or fellow members follow the SOPs.

CHAPTER 6: RSO / CRSO Training Requirements

The Pee Dee Wildlife Action Chapter shall have one or more NRA Certified Range Safety Officers on duty or designated while the shooting range is open.

Range Safety Officers Personnel Responsibilities:

- Range Safety Officer (RSO) and Chief RSO (CRSO) training shall be in accordance with the National Rifle Association Guidelines.
- Range Safety Officers are permitted to carry a holstered firearm while on-duty at their discretion. This firearm may be carried in plain view, or concealed if the RSO has the appropriate concealed carry permit. RSOs that carry a firearm on-duty have the understanding that they are carrying for self-defense of their own person or the defense of others, and not for the defense of the property. **Federal, State, and Local Laws apply**
- All shooting activities will have at least one or more **NRA certified** range safety officer(s) present upon that range .
 - **All** Range safety officer(s) including Chief RSO must be certified by the National Rifle Association.
 - The primary RSO shall have complete control of the sub-range during any event.
 - All RSO's must provide their NRA member number or NRA ID number to the CRSO for certification tracking.

Chief Range Safety Officers Personnel Responsibilities:

- Verify members NRA RSO / CRSO certification status
- Maintain list of RSOs who have been PDWLA Skeet Range certified
- Update SOP and Safety Rules as appropriate
- Co-ordinate / Conduct PDWLA RSO and related training
- Support PDWLA sponsored events (including WLA, CMP, and related)
- Enforcement activity with PDWLA Board as appropriate

CHAPTER 7: PDWLA Guest and Membership Policy

Guests

Wildlife Action is a private nonprofit 501 c(3) tax exempt conservation organization foundation. Pee Dee Wildlife Action Chapter range access is limited to WLA members current with their local annual Park Fees and their guests (only special events are open to the public).

Guests should be friends or relatives. Sponsoring member must be a **Pee Dee Wildlife Action RSO** and must be present with the guest(s). Guests should be of good character such that they would be desirable candidates for future membership if circumstances permit.

Guests must be properly signed in and receive the applicable range Safety Briefing by the RSO prior to using the facility. Guests are the responsibility of the sponsoring RSO.

Since range operation requires funding for fixed costs as well as costs associated with normal wear and tear, **donations are** appropriate and appreciated.

Guests should be from out of town (greater than 50 miles).

New Members PDWLA

The Pee Dee Wildlife Action facilities offer a safe operation with great amenities at reasonable cost compared to other facilities in the area. It is staffed, operated, and maintained entirely by volunteers. Membership is a privilege that requires significant responsibility and commitment.

New Members should be a current member of the NRA. New members must be willing to become and maintain NRA Range Safety Officer certification. Membership to the WLA organization is required in order to become a member of the PDWLA. Current Fees are listed on the web page and are subject to change

Chronological steps to become a new member of Pee Dee Chapter Wildlife Action (PDWLA)

1. Inquire if PDWLA openings are available (membership openings may be limited)
2. Must provide 1 letter of recommendation to the PDWLA Board that attests to the good character & volunteer track record of the candidate. The recommendation letter must be from a PDWLA member in good standing who will serve as the candidate's sponsor for membership.
3. Candidate must hold a valid CWP or submit to a background check. (Background check is at the discretion of the Board) If a background check is performed, a background check fee must be paid at this point for the new membership process to continue.
4. Candidate must attend at least one monthly meeting for introduction to the membership and learning more about PDWLA .
5. Candidate is **accepted for membership** by the Board
6. Candidate **becomes a PDWLA member** after paying the WLA general annual membership fee, any local Pee Dee Chapter initiation fee in effect, and the local annual Pee Dee Chapter Park Fee for the calendar year. Hunt Club membership may also be an option if openings are available (additional annual fee required)

New Members PDWLA-continued

- Total Fees = WLA membership + Background check fee (for non CWP holder) + Initiation + Park Fee + Hunt Club Fee (optional)
- Scholarship funds or fee waiver(s) may be possible if candidate expresses hardship condition to the PDWLA President and funds are available
- New membership is not transferable. Fees or membership costs are not prorated or refundable

Current Members PDWLA

- To maintain good standing with all rights and privileges, members must keep WLA membership and local Pee Dee Park Fee current for the calendar year. **Use of the range facility as a guest is not an option if Park Fee is not paid. All fees must be paid by Feb 28th of the calendar year or you can no longer use the range. A late fee will be assessed if payment is not received by that date**
- To maintain good standing with all rights and key privileges, volunteer hours for the previous calendar year must have met minimum expectations (as set by the PDWLA Board). Hardship cases are to be presented to the PDWLA President for approval.
- RSO certifications must also be kept current to maintain Park Key privilege. (Status is tracked in NRA database www.nra.org/training)
- Membership is not transferable. Fees or membership costs are not prorated or refundable

WLA membership only:

Annual or Life Membership in WLA only is a limited membership option. Supporting the objectives and beliefs of the organization is greatly appreciated. Unfortunately this membership category alone does not provide member access to the Pee Dee Chapter's shooting ranges

APPENDIX 1: Daily Outdoor Range Inspection Guide

Range inspected : Pistol Rifle Skeet (circle applicable)

RSO is to use this page as a checklist.

Range is not to be used until this activity is completed and any issues corrected.

This information is used by RSO to complete sign in sheet Appendix 5 column 6.

Notify CRSO or PDWLA President if the problem(s) are not readily correctable

Discard this completed guide after corrective actions have been performed.

Pistol and Rifle Ranges	Skeet Range Items
Ensure that the down range area clear of individuals	Same
Backstop/Impact Area Inspected	Same
Target Frames/Mounts in Good Repair	N/A
Firing Line Marked	Same
Shooting Benches/Tables Inspected	Shooting Stations Inspected
Spectator Area Designated	Same
Supplies Available	Same
RSO Control Area Centralized	Same
First-Aid Kit Filled/Accessible	Same
Range Rules Posted	Same
Gun Racks Available	Same
Trash Receptacles Available	Same
Brass/Dud Buckets Available	Same
Wash Area Identified	Same
	Power cords safely routed

Comments (include name and date)

Range is not to be opened if problem items are not corrected

APPENDIX 2: Typical Range Safety Briefing

Range Safety

Identify all Range Officers.

Purpose of the Event.

Example:

Open shooting.

Recreational

Zeroing firearms.

Match.

Training session.

Hunter Education Range activity.

Skeet Shooting

Range Layout and Limits

Restroom facilities

Spectator area.

Ready or pack up area (is on firing line)

Firing Line.

Safety berms.

Backstop.

Range Safety Rules.

Always keep the firearm pointed in a safe direction.

Always keep your finger off the trigger until ready to shoot

Always keep the firearm unloaded until ready to use.

Know the target and what is beyond

Be sure the firearm is safe to operate

Use only the correct ammunition

Wear ear and eye protection as appropriate

Never use alcohol or drugs before or while shooting

Store firearms so that they are not accessible by unauthorized persons

Know and obey all Range rules

Know where others are at all times

Shoot only at authorized targets

Do not handle a firearm or stand at the firing line, where firearms are present, while others are downrange.

“3 minute prep time “is conducted at the firing line to uncase (recase) firearms.. Firearms remain unloaded with actions open, and magazines or clips unattached.

Nobody goes forward of the firing line.

Brass can be picked up only while range is “Cold”

Stop shooting immediately upon the command “**CEASE FIRE**”

APPENDIX 2: Typical Range Safety Briefing -continued

Firing Line Commands

To ensure that firing line commands are consistent; the following commands are to be used. The commands may vary depending upon the course of fire being shot. Standard range commands will be the normal commands used for all firing lines *except* when competition rules override them.

Standard Pee Dee Wildlife Action Firing Line Commands:

- “Cease Fire”
- “Bench your weapons with actions open”
- “The Range is Cold”
- “3 minute prep time”
- “The Range is Hot”
- “Commence Fire”

Emergency Procedures

Review the Emergency Procedures

Commands that can be given by anyone.

“CEASE FIRING”

Review any applicable range specific rules such as...

- rifle range - RSO will illuminate the Red Light while range is “Hot”
- RSO will illuminate the Green Light while range is “Cold”
- RSO will sound the horn to indicate change of range status
- RSO will open and close the white gate between the firing line and target area

**For additional Pistol or Rifle Range Safety Briefing items refer to
SOP Chapter 5 Sections G1&G2 Pistol or Rifle Range Specific Rules**

**For additional skeet range Safety Briefing items refer to
SOP Chapter 5 Section G3 Skeet Range Specific Rules**

APPENDIX 3: Emergency Report Sheet

EMERGENCY REPORT SHEET

To be turned into the Secretary

EMERGENCY COMMUNICATIONS

Contact	Primary Phone Number	Secondary Phone Number
EMS	911 or 843-669-3911	843-665-2121ext440
Police	911 or 843-669-3911	843-665-2121ext440
Fire	911 or 843-669-3911	843-665-2121ext440
Poison Control Center	911 or 843-669-3911	843-665-2121ext440
PDWLA President	843-861-5175	Get emergency help first
PDWLA CRSO	843-317-1090	Get emergency help first

Immediate Response for Injuries or Illness.

Call a cease-fire if the injured is near the firing line. Ensure that **all** firearms are unloaded & clear
The primary RSO will coordinate.

Notify 911 and provide the following information:

Specific Location or address of incident with directions.

Location: _____

Address: _____

Directions: _____

Telephone Number calling from: _____

Caller's name: _____

What happened:

Possible hazards for rescuers

Number of people injured or ill: _____

Condition of injured or ill:

First Aid Provided:

APPENDIX 3: Emergency Report Sheet-continued

Wait for 911 to hang up first.

First Aid Provider Will:

Identify self to the injured

Inform injured of training (American Red Cross Standard First Aid & CPR).

Offer Aid to Injured

Receive verbal permission from injured (if adult), or parent/guardian (if child) *prior* to giving care

Refrain from giving aid to person that is conscious whom objects

Assume implied permission if person is unconscious or unable to respond

Assume implied permission if person is a child with a serious injury and a parent or guardian cannot be contacted.

Move injured only if life is endangered

Check injured for life threatening condition before providing care. Provide care only within level of training.

Never dispense aspirin or medications; administer activated charcoal or syrup of Ipecac (or other treatments) unless directed to by EMS or Poison Control Center.

RSO or his designate will retrieve the first-aid kit located at the Rifle Range sign in booth

If the accident involves a gunshot or archery injury, RSO will notify police and preserve the scene as it appeared at the time of the incident, plus secure the injured persons gear.

RSO or his designate will go to the range entrance and direct EMS personnel to the injured and remain until the last emergency vehicle has departed the scene.

Coordination

The primary RSO will supervise the situation and ensure fulfillment of emergency procedures by:

Getting names of witnesses

Tasking witnesses to write statements

Notify next of kin once EMS has examined the injured and prepared for transportation to a medical facility, *only if requested by victim.*

Completing injury report forms

Notify the President of Pee Dee Wildlife Action and CRSO concerning the activation of the emergency plan

Notifying insurance company (assist as appropriate)

Evaluating emergency plan for possible revisions

Filing copies of the injury report forms with records as appropriate.

**If appropriate, a media spokesperson will be designated by the Board.
Individual members are requested to refrain from media comment.**

APPENDIX 4: Injury Report Form

EMERGENCY MEDICAL REPORT

INCIDENT DATE _____ TIME _____ LOCATION _____

NAME of PATIENT _____ DATE OF BIRTH _____

ADDRESS _____

CITY _____ STATE _____ SEX _____ PHONE _____

EMERGENCY CONTACT _____ RELATIONSHIP _____

PHONE NUMBER _____

TYPE OF EMERGENCY (**CHIEF COMPLAINT**) _____

WHAT WERE YOU **TOLD**? _____

ALLERGIES: _____ **MEDICATIONS** _____

WHAT DID YOU **OBSERVE**? _____

WHAT IS YOUR **ASSESSMENT** OF THE PROBLEM? _____

WHAT DID YOU DO FOR THE PATIENT? _____

911 CALLED? **YES/NO**. TIME OF ARRIVAL _____ UNIT NUMBER _____

SIGNATURE _____ DATE _____

WITNESS SIGNATURE _____ DATE _____

USE REVERSE SIDE FOR ADDITIONAL SPACE. MORE ON REVERSE? **YES/NO**

APPENDIX 4: Injury Report Form-continued

BACK SIDE OF INJURY REPORT FORM FOR USE AS NEEDED

WITNESS NARRATIVE FORM.

What did you see? _____

What did you hear? _____

What did you do? _____

Signed (by witness)

Date

APPENDIX 5: Hold Harmless Agreement Form

Waiver Form

Wildlife Action agrees to allow the use of Park and Range upon the following understanding agreement, assumption, certification, and release by the member or guest

I agree that I will not allow it to be used by persons other than myself, without the express written consent of WLA

After receiving and understanding the Range Safety Briefing as well as reviewing and understanding the posted rules, I voluntarily assume all risk of accident or damage to my person or property, which may be incurred from or be connected in any manner with my use of the Wildlife Action Park and Range. I also agree to follow safety instruction, rules, and suggestions presented to me. If I am a Pee Dee Wildlife Action Chapter Range Safety Officer (RSO), I accept personal responsibility for these same requirements being met, even if I did not receive a safety briefing by another RSO .

I hereby release Wildlife Action and its affiliates, agents, employees, and the property owners from all claims, demands, actions, causes of actions, and from all liability for damage, loss or injury (of whatever kind, nature, or description) that may arise out of or I may sustain in connection with my use or operation from WLA

I further agree to indemnify and save harmless Wildlife Action, it affiliates, agents, employees, and the property owners from all claims, demands, actions. causes of action, or causes of action including, attorney's fees, expenses and costs of myself or of third parties of whatsoever kind or nature which may arise out of or be in any manner connected with or caused by my use, operation or from Wildlife Action. This release and indemnification shall be binding upon my heirs, administrators, executors, and assigns

By signing this document, I certify that I have received and understand the Range Safety Briefing as well as reviewing and understanding the posted rules plus having read, understand, and accept this agreement and release with its contents and intents. I am signing the reverse side of this document for myself and as the parent or legal guardian for any members of my group under the age of 18. If I am a Pee Dee Wildlife Action Chapter RSO I waive the requirement for a Range Safety Briefing for myself if it was not performed by another RSO and I accept this personal responsibility.

Revision History

Original document issued	10-8-2010
General update	2-17-2015
General update. Consolidated 07-20-12 Skeet Range SOP materials into document. Added guest and membership section.	12-5-2017

