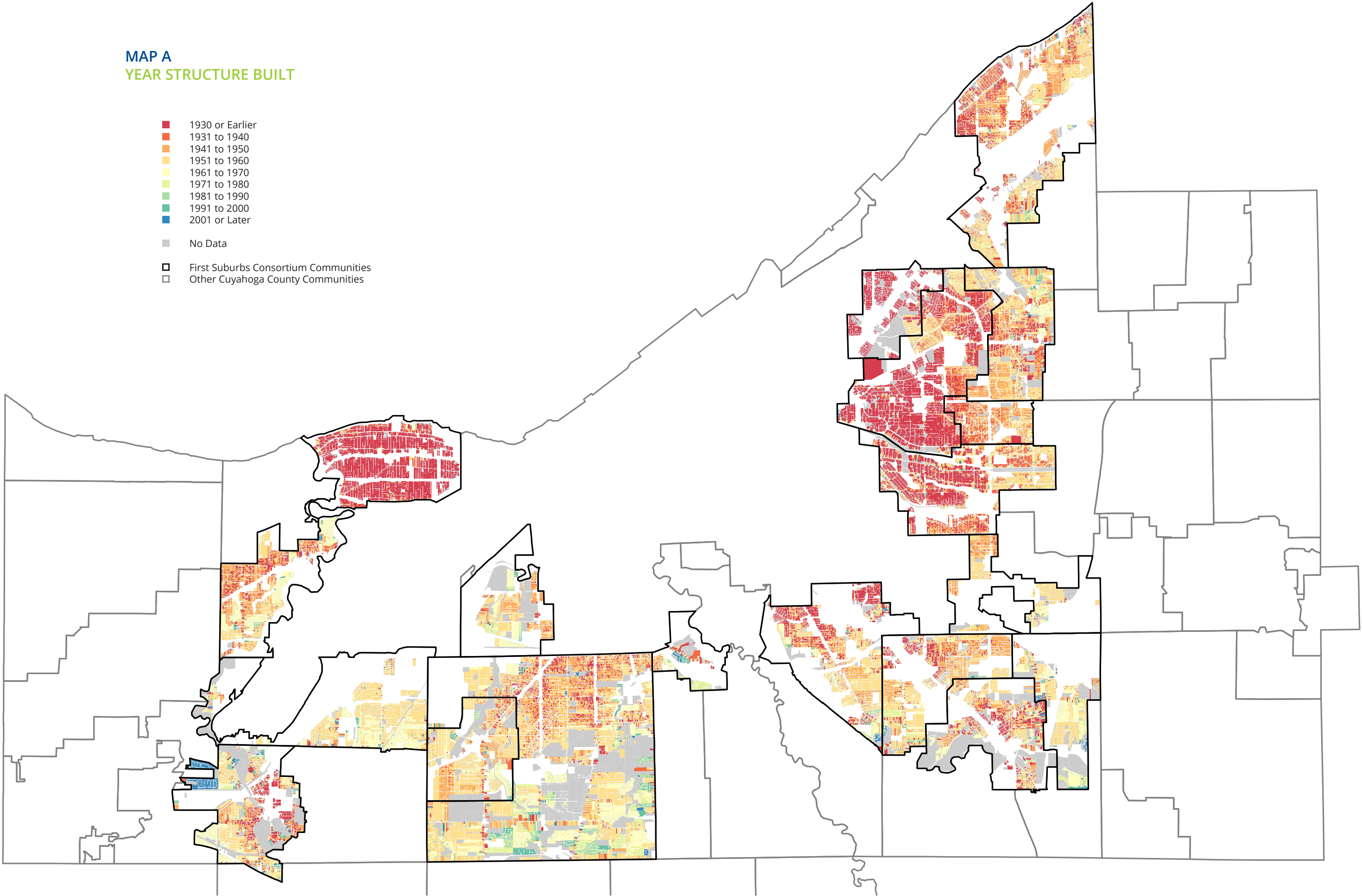


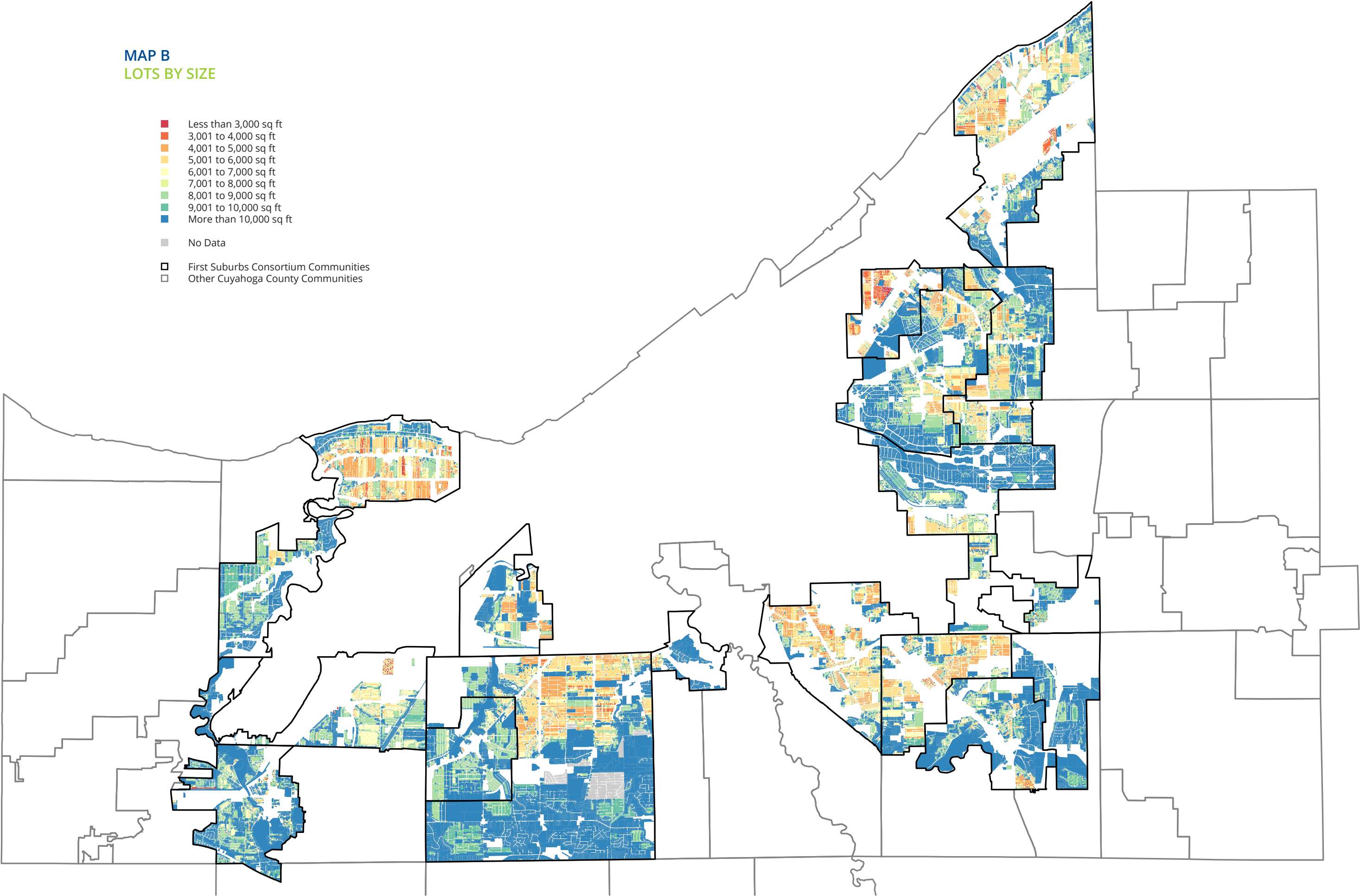
MAP A  
YEAR STRUCTURE BUILT

- 1930 or Earlier
- 1931 to 1940
- 1941 to 1950
- 1951 to 1960
- 1961 to 1970
- 1971 to 1980
- 1981 to 1990
- 1991 to 2000
- 2001 or Later
- No Data
- First Suburbs Consortium Communities
- Other Cuyahoga County Communities



MAP B  
LOTS BY SIZE

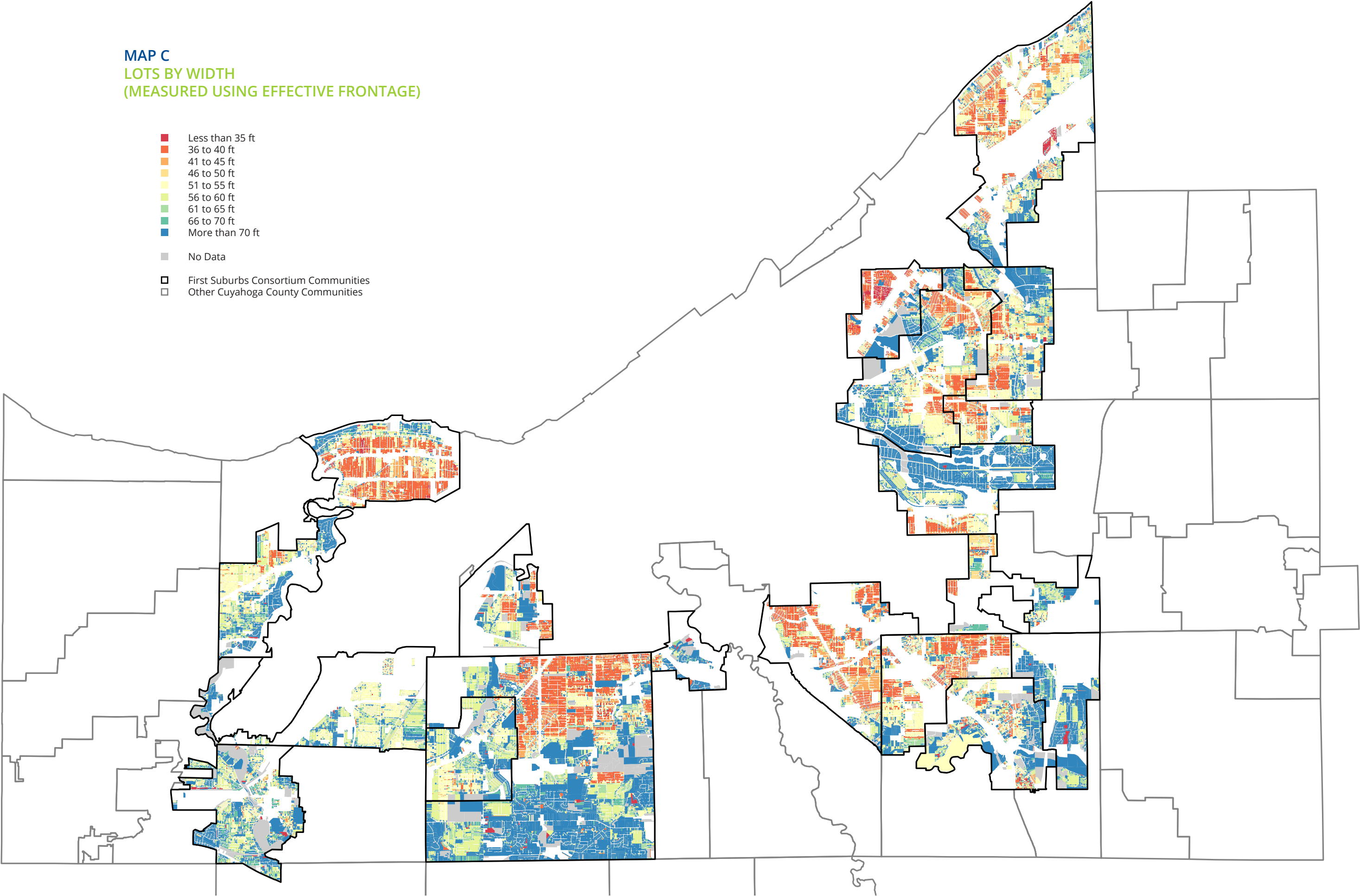
- Less than 3,000 sq ft
- 3,001 to 4,000 sq ft
- 4,001 to 5,000 sq ft
- 5,001 to 6,000 sq ft
- 6,001 to 7,000 sq ft
- 7,001 to 8,000 sq ft
- 8,001 to 9,000 sq ft
- 9,001 to 10,000 sq ft
- More than 10,000 sq ft
- No Data
- First Suburbs Consortium Communities
- Other Cuyahoga County Communities





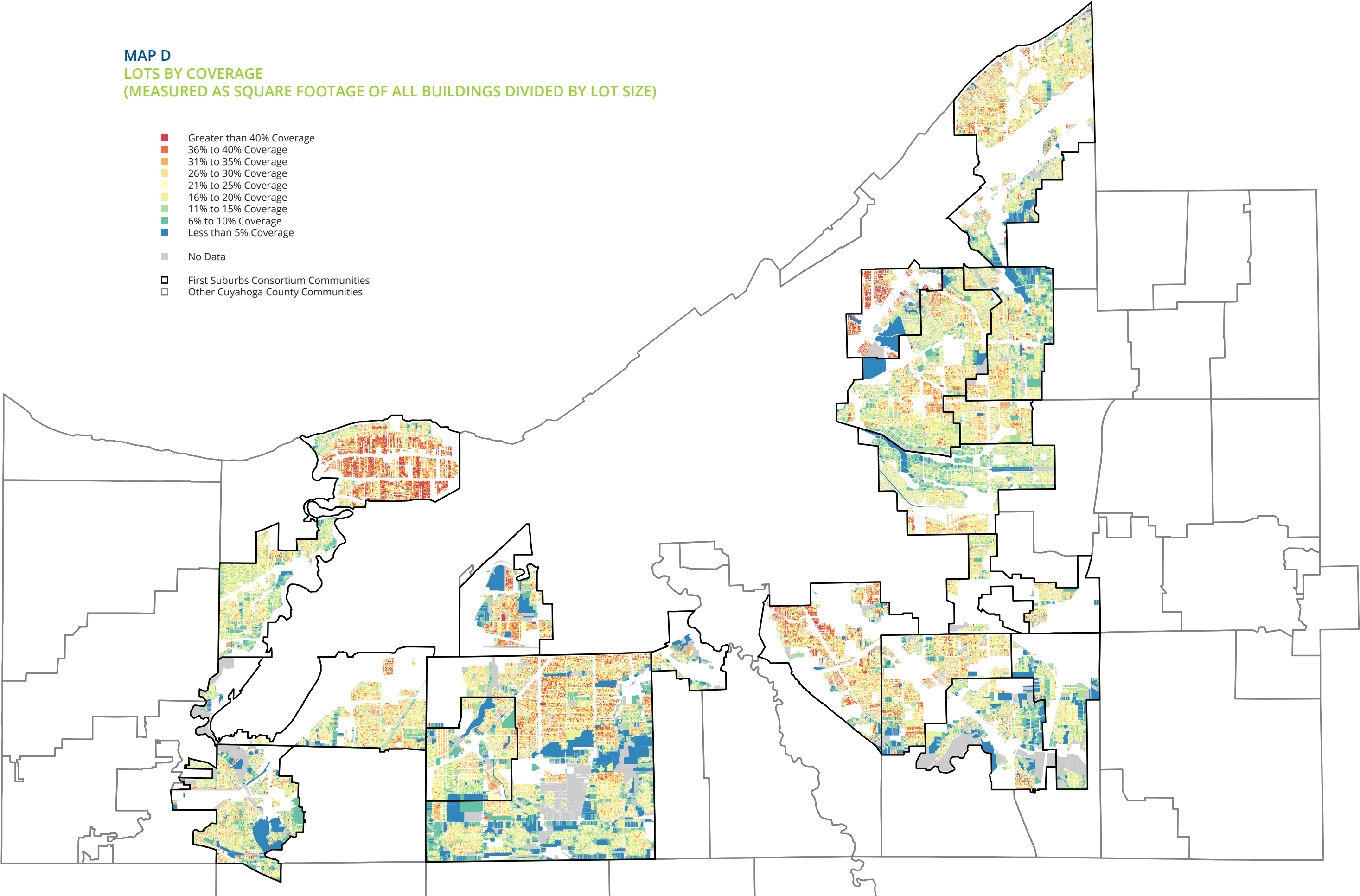
MAP C  
LOTS BY WIDTH  
(MEASURED USING EFFECTIVE FRONTAGE)

- Less than 35 ft
- 36 to 40 ft
- 41 to 45 ft
- 46 to 50 ft
- 51 to 55 ft
- 56 to 60 ft
- 61 to 65 ft
- 66 to 70 ft
- More than 70 ft
- No Data
- First Suburbs Consortium Communities
- Other Cuyahoga County Communities



MAP D  
LOTS BY COVERAGE  
(MEASURED AS SQUARE FOOTAGE OF ALL BUILDINGS DIVIDED BY LOT SIZE)

- Greater than 40% Coverage
- 36% to 40% Coverage
- 31% to 35% Coverage
- 26% to 30% Coverage
- 21% to 25% Coverage
- 16% to 20% Coverage
- 11% to 15% Coverage
- 6% to 10% Coverage
- Less than 5% Coverage
- No Data
- First Suburbs Consortium Communities
- Other Cuyahoga County Communities





MAP E  
LIVABLE AREA  
(MEASURED AS TOTAL LIVING AREA EXCLUDING BASEMENTS)

- Less than 800 sq ft
- 801 to 1,000 sq ft
- 1,001 to 1,200 sq ft
- 1,201 to 1,400 sq ft
- 1,401 to 1,600 sq ft
- 1,601 to 1,800 sq ft
- 1,801 to 2,000 sq ft
- 2,001 to 2,200 sq ft
- More than 2,200 sq ft
- No Data
- First Suburbs Consortium Communities
- Other Cuyahoga County Communities

