

FOLSOM STREET

EAU CLAIRE, WISCONSIN SPACE AVAILABLE FOR LEASE

1,500 Square Feet



High Traffic Location **2523 West Folsom Street, Suite A1**

- ♦ Competitive Rates
- ♦ Flexible Use-Retail, Professional Office, Medical
- ♦ Clairemont & Folsom Signalized Intersection
- ♦ Fast Access to Hwy I94, 312
- ♦ Great Visibility
- ♦ Attractive Arts & Craft Architecture
- ♦ Next to Numerous Customer Generators such as Dollar Tree, Dunkin' Donuts, Menards, Festival Foods West, Holiday Express, Culvers

*For More
Information Contact:*

DAVID SANDERS
715-723-2223



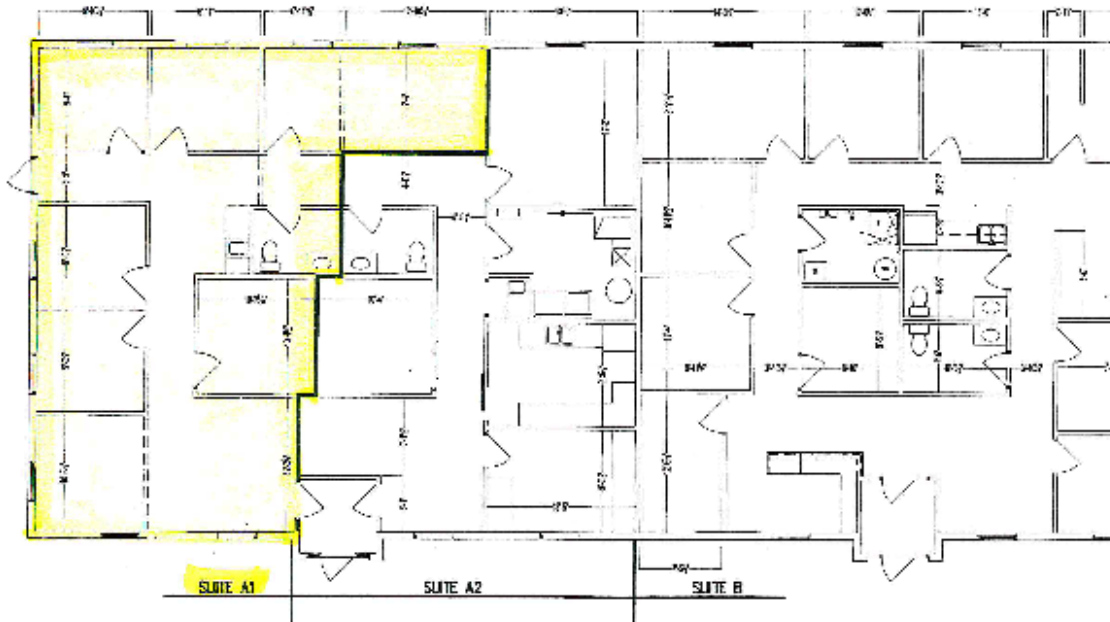
"Your Commercial Real Estate Specialists"

Mid States Development, Inc.

www.midstatesdevelopment.com

dsanders@midstatesdevelopment.com

SPACE AVAILABLE FOR LEASE



Suite A1—Approximately 1,500 Square Feet

CUSTOMER PARKING AT YOUR DOOR

For More Information, Contact:

DAVID SANDERS
715-723-2223 EXT 12

dsanders@midstatesdevelopment.com