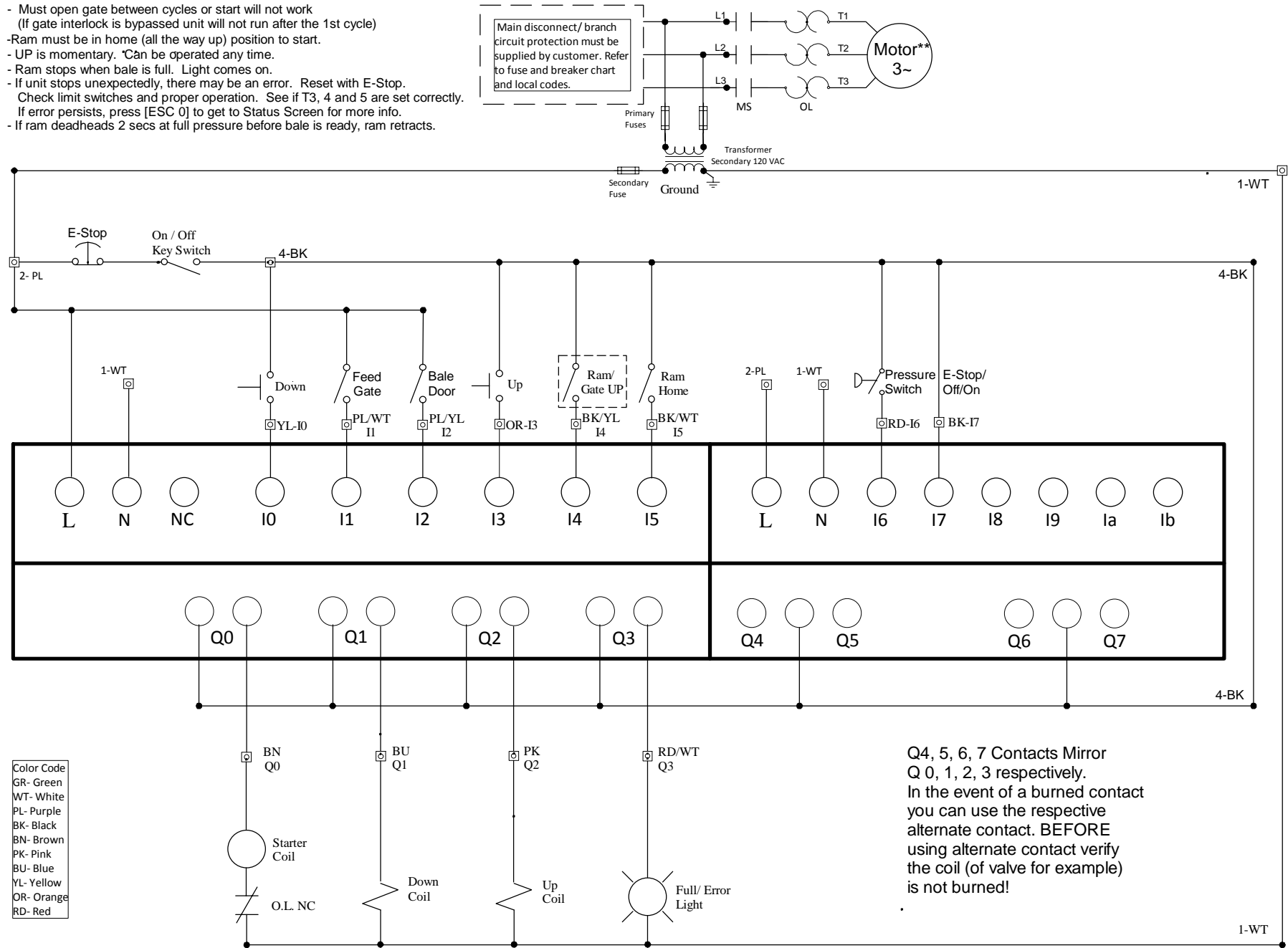


**Notes:**

- Must open gate between cycles or start will not work  
(If gate interlock is bypassed unit will not run after the 1st cycle)
- Ram must be in home (all the way up) position to start.
- UP is momentary. \*Can be operated any time.
- Ram stops when bale is full. Light comes on.
- If unit stops unexpectedly, there may be an error. Reset with E-Stop.  
Check limit switches and proper operation. See if T3, 4 and 5 are set correctly.  
If error persists, press [ESC 0] to get to Status Screen for more info.
- If ram deadheads 2 secs at full pressure before bale is ready, ram retracts.

\*\*For single phase jump T2 to L3 on starter, connect motor to T1 and T3



Versa-Bale V4 Schematic. For support go to [www.versa-bale.net](http://www.versa-bale.net) or call 352-742-4774.