

Chicken Chicks



POULTRY

INFORMATION

BOOKLET

1-855-885-WING

www.ChicknChicks.com

Table of Contents

	<u>Page</u>
Whole Birds	4
Perdue	5
Boneless Breasts, Cutlets, & Tenders	6-9
Cut-Up Parts	9-15
Whole Wings	13-14
Party Wings	14-15
Gizzards, Livers, & Backs	16
Our Halal Chicken	17-19

Your Fresh Poultry purchase is much more important than the price that you pay per pound; it's the Quality of the Product you're buying. With the strict guidelines in place for poultry by the USDA it makes sense to purchase your poultry from the Chicken Chicks.

- A. Our poultry is received, unloaded and stored in a designated poultry room consistently maintaining proper temperature. This is so important for the integrity of the product.
- B. Our Poultry is delivered Fresh from the Farm each & every day. Deliveries are received between 12am to 3am 7 days a week.
- C. The monitoring alarm system is active 24 hours a day, 365 days a year to safe guard the temperature controls & we maintains the freshest poultry. We are currently expanding our current poultry room to stock even more!
- D. We carry all the name brands in Poultry that you would expect. Pilgrim's Pride, Mountaire, Perdue Farms, Wayne Farms, and Murray's.
- E. We deliver to most areas three (3) times per week. Delivering your Fresh Poultry when you need it.
- F. We created this booklet to help our Customers & Sales Team Members identify our poultry items at a glance.
- G. Chicken It's what we do best!



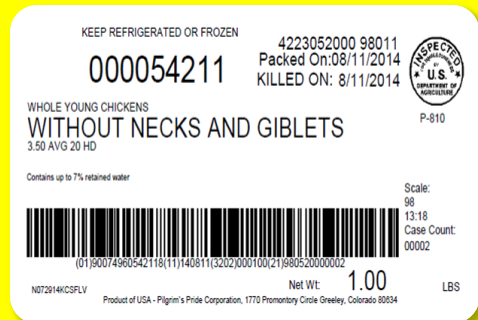
WHOLE BIRDS - WOG=Without Giblets Whole Chicken=With Giblets

ITEM	CODE	BRAND	DESCRIPTION	PACK	
9875	54526	Pilgrim's Pride	2.25lb – 2.50lb WOG	16 Head	CVP
9774	54207	Pilgrim's Pride	2.75lb – 3.0lb WOG	26 Head	Ice Pack
9880	54818	Pilgrim's Pride	3.0lb – 3.25lb WOG	16 Head	CVP
9842	54517	Pilgrim's Pride	3.25lb – 3.50lb WOG	16 Head	CVP
9887	54211/72035	Pilgrim's Pride	3.50lb – 4.0lb WOG	20 Head	Ice Pack

Item #9884 #3538 3.25lbs – 3.5lbs Rotisserie Marinated WOG 12 Head C.V.P. Tied & Injected with a Salt and Water Solution. – Great for Rotisseries



Item #9887 • #54211 • 3.5lbs – 4lbs LBS WITHOUT GIBLETS • 20 Head – Ice Pack



Item #9487 #25205 2.75lbs- 3.0lbs Butterfly (Split) Chicken 24 Head CVP



Item #9450 • #25211 • 3.25lbs – 3.50lbs Butterfly (Split) Chicken • 20 Head – Ice Pack





Perdue Brand Whole Birds, Cutlets & Wings

Item #9961

Code #213 28 Heads
2.50lb Avg. Yellow Whole Chicken Ice Pack



Item #9962 #257 2.75lbs – 3.0lbs Yellow Whole Chicken 30 Head Ice Pack

Item #9433

Code #215 24 Heads
3.0lb Avg. Whole Chicken Fryers



Item #9724

Code #217 20 Heads
3.50lb Avg. Whole Chicken Ice Pack



Item #9632

Code #219 18 Heads
4.0lb Avg. Whole Chicken Ice Pack



ITEM	CODE	BRAND	DESCRIPTION	PACK
9868	431	Perdue	7.0lbs & Up Whole Roaster	10 Head Ice Pack
9636	44030	Perdue	Cutlets Boneless Random (Medium Size)	40lb CVP

Boneless Breasts / Cutlets

Item #9957 #50048 4oz Supertrim Single Lobe Breast CVP 20lbs 80 portions approx.

Item #9958 #2566 4oz Supertrim Single Lobe Breast CVP 20lbs **HALAL *Special Order****

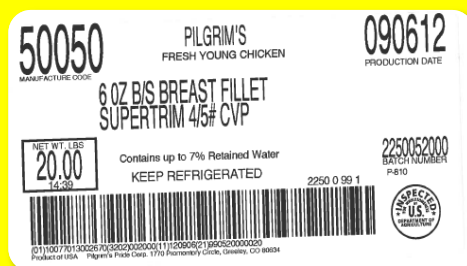


Item #9814 #50049 5oz Supertrim Single Lobe Breast CVP 20lbs 64 portions approx.

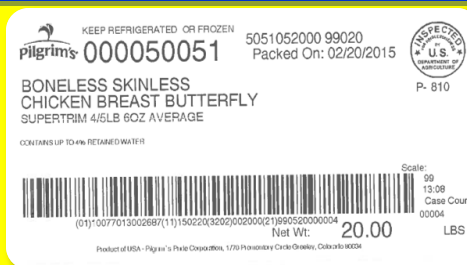


Item #9965 #2565 5oz Supertrim Single Lobe Breast CVP 20lbs **HALAL *Special Order***

Item #9864 #50050 6oz Supertrim Single Lobe Breast CVP 20lbs 54 portions approx.



Item #9802 #50051 6oz Supertrim Double Lobe Breast CVP - 20lbs 54 portions approx. ***SPECIAL ORDER***



Item #9485 #20004 8oz Supertrim Single Lobe Breast CVP 20lbs 40 portions approx.



Boneless Breasts / Cutlets (Continued)

**Item #9853 #50052 8oz Supertrim Double Lobe Breast CVP 20lbs
40 portions approx.**



**Item #9784 #25130 Supertrim Single Lobe Cutlets CVP 40lbs
80 portions approx. 8oz Avg. Portion (Cut from a 6.5lb. Chicken)**



Item #9872 #2567 Supertrim Select Double Lobe Boneless Cutlets CVP 40lbs **HALAL
12oz Avg. Portion (Cut from a 4.5lb. Chicken)**



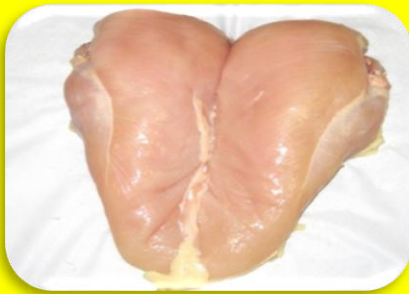
**Item #9851 #25605/155 Jumbo Random Cutlets CVP 40lbs
18-22oz Avg. Portion (Cut from an 8lb. Chicken) **HALAL****

**Item #9545 #25688 Jumbo Black Label Cutlets CVP 40lbs - Single Lobe
18-20oz Avg. Portion (Cut from an 8lb. Chicken)**

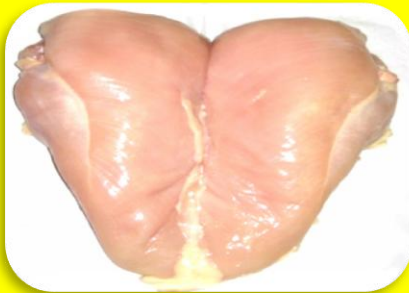


Boneless Breasts / Cutlets (Continued Pt. 2)

Item #9845 #20105/6544/1982 Jumbo Random Cutlets CVP 40lbs
18-22oz Avg. Portion (Cut from an 8lb. Chicken)



Item #9780 #25630 Jumbo Random Cutlets CVP 40lbs
18-22oz Avg. Portion (Cut from an 8lb. Chicken)



Item #9772 #25691 Boneless Breast Tumbled 20% Pump CVP 40lbs
34/18-20oz Avg. Portion (Cut from an 8lb. Chicken)

Boneless Tenders

Item #9808 #25227/455 Jumbo Clipped Tenders CVP 40lbs
183/3-4oz Avg. Portion (Cut from an 8lb. Chicken)



Item #9805 #25240/338 Jumbo Tenders CVP 40lbs
183/3-4oz Avg. Portion (Cut from an 8 lb. Chicken) **HALAL**



HALAL
POULTRY



Boneless Tenders (Continued)

Item #9889 #54936 1oz. Clipped Tenders CVP 40lbs
640/1oz Avg. Portion



CUT UP CHICKEN

8 PIECE



Item #9815 Code #54252
2.25lbs - 2.50lbs 8 PC Cut Chicken 20 Head C.O.2.

Item #9877 Code #54249
2.75 lb - 3.0 lb 8 PC Cut Chicken 16 Head C.V.P.

Item #9762 Code #50414 **Halal**
3.0lbs - 3.25lbs 8 PC Cut Trimmed *Marinated* Chicken 16 Head C.V.P.

Item #9860 Code #1397
3.0lbs - 3.25lbs 8 PC Cut Chicken 16 Head C.O.2. **Halal**

Item #9843 Code #1398
3.25lbs - 3.50lbs 8 PC Cut Chicken 16 Head C.O.2. **Halal**



HALAL
POULTRY

4 PIECE *Special Order*

Item #9968 Code #63320
2.75lbs - 3lbs CVP 4 PC Chicken (Without Giblets) 16 Head **Halal**

Item #9847 Code #54837
3lbs - 3.25lbs CVP 4 PC Chicken (Without Giblets) 16 Head **Halal**

CUT UP CHICKEN (Continued)

9 PIECE

Item #9786 Code #55014 Pilgrim's Pride/Peace
3.5lbs - 9 PC Cut Chicken 24 Head Ice Pack **Halal**



Item #9888 #54483 Chicken Breast Whole Bone In 40lbs CVP
(Cut from a 3lb - 3.50lb Chicken)



Item #9810 #55114 Chicken Breast Split w/Back Bones 40lbs CVP
80-8oz Portions Avg. (Whole Breast Cut in Half w/Bone)

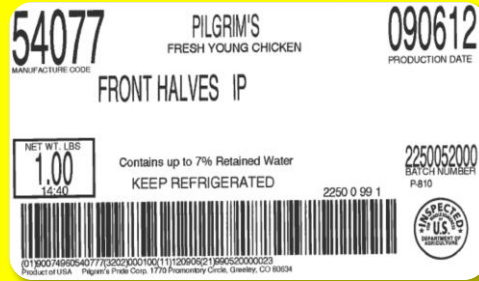


Item #9778 #1024 Chicken Breast Whole Bone In Large 40lbs CVP
(Cut from an 8lb Chicken)



CHICKEN PARTS (CONTINUED)

Item #9726 #54077 Chicken Front Halves 40lbs Ice Pack
(Cut from an 3.5lb Chicken) ***SPECIAL ORDER***



Item #9831 #54856 Leg Quarter Uncut 40lbs CVP

Item #9629 #54083 Leg Quarter Uncut 40lbs Ice Pack **HALAL *SPECIAL ORDER***
50-55 Pieces per case Avg. (Cut from a 3.5lb Chicken)



Item #9791 #55188 Split Thigh & Leg **Halal** 40lbs Ice Pack
64 Legs & 64 Thighs per case Avg. (Cut from a 3.5lb Chicken)



Item #9646 #54855 Whole Leg - No Back 40lbs CVP
(Cut from a 3.0lb - 3.5lb Chicken)



CHICKEN PARTS (CONTINUED Pt. 2)

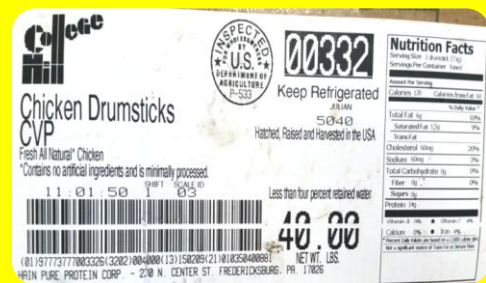
Item #9742 #7650 Whole Leg Jumbo No Back 40lbs C02
38 - 40 Pieces per case Avg. (Cut from an 8lb Chicken)



Item #9829 #54504 Drumsticks Small 40lbs CVP
160 Pieces per case Avg. (Cut from a 3lb Chicken)



Item #9807 #332 Drumsticks Medium/Large 40lbs CVP
130-150 Pieces per case Avg. (Cut from a 5.5lb Chicken)



Item #9796 #25608/156 Thigh Boneless Halal 40lbs CVP
(Cut from a 8.0lb Chicken)



CHICKEN PARTS (CONTINUED Pt. 3)

Item #9782 #47145/4581 Thigh Boneless Bulk 40lbs CVP
(Cut from a 8lb Chicken)



MOUNTAIRE
BONELESS THIGHS CVP 47145
(SKINLESS 4/10)
MAY CONTAIN UP TO THREE PERCENT RETAINED WATER

PACKED 09/21/12
YOUNG CHICKEN KEEP REFRIGERATED
PRODUCT OF U.S.A. 99 11 53 08 0142 P-667
MOUNTAIRE FARMS OF DELAWARE - SELBYVILLE, DE. 19875

INSPECTED
U.S. DEPARTMENT OF AGRICULTURE
4-887

40.0
NET WEIGHT
LBS.

WHOLE WING COMPARISON

Cut From: 8 Lb Chicken 6-6.5 Lb Chicken 3.5-4 Lb Chicken



Jumbo #9876 **Medium #9734** **Small #9972**

Item #9972 #33250 Wings Whole Small 40lbs CVP
200-220 Pieces per case Avg. (Cut from a 3lb Chicken)



KEEP REFRIGERATED OR FROZEN
000033250 5051052000 99020 Packed On: 02/20/2015
WHOLE CHICKEN WINGS

INSPECTED
U.S. DEPARTMENT OF AGRICULTURE
P-810

COOKS UP TO 4% RETAINED WATER

Scale: 99
13.07
Case Count: 00002

Net Wt: 40.00 LBS

Item #9832 #55113 Wings Whole Small **Halal** 40lbs Ice Pack
200-220 Pieces per case Avg. (Cut from a 3lb Chicken)



KEEP REFRIGERATED OR FROZEN
pilgrims 000055113 4216052000 98004 Packed On: 08/04/2014
WHOLE CHICKEN WINGS

INSPECTED
U.S. DEPARTMENT OF AGRICULTURE
P-810

Contains up to 5% retained water

Scale: 98
15.39
Case Count: 00002

Net Wt: 40.00 LBS

CHICKEN PARTS (CONTINUED Pt. 4)

Item #9734 #4614 Wings Whole Medium 40lbs CVP
135-150 Pieces per case Avg. (Cut from a 6.5lb Chicken)



Item #9876 #10129/656 Wings Whole Jumbo 40lbs CVP
120-130 Pieces per case Avg. (Cut from a 8lb Chicken)



Item #9793 #25607 Wings Whole Jumbo Halal 40lbs CVP
120-130 Pieces per case Avg. (Cut from a 8lb Chicken)



PARTY WING COMPARISON

Cut From: 8 Lb Chicken

6-6.5 Lb Chicken

3.5-4 Lb Chicken



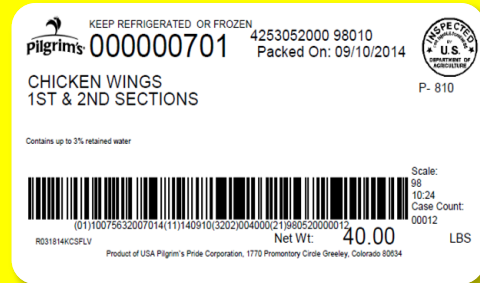
Jumbo #9826
6-8 per pound

Medium #9820
8-10 per pound

Small #9883
12-15 per pound

CHICKEN PARTS (CONTINUED Pt. 5)

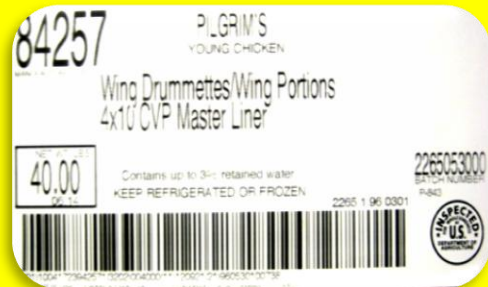
Item #9883 #701 Wings Party Small 40lbs CVP
12-15 Pieces/lb. 540 Pieces per case Avg. (Cut from a 3lb Chicken)



Item #9820 #10146 Wings Party Medium 40lbs CVP
8-10 Pieces/lb. 360 Pieces per case Avg. (Cut from a 5.5lb Chicken)



Item #9826 #84257/451/10033 Wings Party Jumbo 40lbs CVP
6-8 Pieces/lb. 300 Pieces per case Avg. (Cut from a 8lb Chicken)



Item #9747 #10153 Wings Party Jumbo 40lbs CVP



Item #9648 #10198 Wings Party Jumbo 40lbs CVP HALAL *Special Order*
6-8 Pieces/lb. 300 Pieces per case Avg. (Cut from a 8lb Chicken)

CHICKEN GIZZARDS, LIVERS & BACKS

Item #9777 #21132 Chicken Gizzards 4/10lbs Frozen C02



Item #9765 #12656 Chicken Livers 6/5lbs C02 Plastic Tub



Item #2703 #54114 Chicken Backs 40lbs Frozen Ice Pack **Random Sizes**



Our Halal Chicken

Item #9958 # 2566 4oz Supertrim Single Lobe Breast CVP **HALAL *Special Order****



Item #9965 # 2565 5oz Supertrim Single Lobe Breast CVP **HALAL *Special Order***

Item #9872 #2567 Supertrim Select Double Lobe Boneless Cutlets CVP 40lbs **HALAL**
12oz Avg. Portion (Cut from a 4.5lb. Chicken)



Item #9851 #25605/155 Jumbo Random Cutlets CVP 40lbs
18-22oz Avg. Portion (Cut from an 8lb. Chicken) **HALAL**

Item #9805 #25240/338 Jumbo Tenders CVP 40lbs
183/3-4oz Avg. Portion (Cut from an 8lb. Chicken) **HALAL**



Item #9762 Code #50414 **Halal**
3.0lbs - 3.25lbs 8 PC Cut Trimmed *Marinated* Chicken 16 Head C.V.P.

Our Halal Chicken



Item #9843 Code #1398
3.25lbs – 3.50lbs 8 PC Cut Chicken 16 Head C.O.2. **Halal**

Item #9968 Code #63320
2.75lbs – 3lbs CVP 4 PC Chicken (Without Giblets) 16 Head **Halal**

Item #9847 Code #54837
3lbs – 3.25lbs CVP 4 PC Chicken (Without Giblets) 16 Head **Halal**

Item #9786 Code #55014 Pilgrim's Pride/Peace
3.5lbs – 9 PC Cut Chicken 24 Head Ice Pack **Halal**



PEACE BRAND KEEP REFRIGERATED OR FROZEN
000055014 4217052000 98005 Packed On: 08/05/2014
INSPECTED U.S. DEPARTMENT OF AGRICULTURE
P- 810
ALL NATURAL* CHICKEN CUT-UP 9 PIECES
*MINIMALLY PROCESSED NO ARTIFICIAL INGREDIENTS
Contains up to 4% retained water
Scale: 99 11:23 Case Count: 00019
Net Wt: **30.00** LBS
N073014KCSFLV Product of USA Pilgrim's Pride Corporation, 1770 Promontory Circle Greeley, Colorado 80634

Item #9629 #54083 Leg Quarter Uncut 40lbs Ice Pack **Halal *SPECIAL ORDER***
50-55 Pieces per case Avg. (Cut from a 3.5lb Chicken)



KEEP REFRIGERATED OR FROZEN
000054083 4224052000 98012 Packed On: 08/12/2014
INSPECTED U.S. DEPARTMENT OF AGRICULTURE
P- 810
CHICKEN LEG QUARTERS
Contains up to 5% retained water
Scale: 98 08:01 Case Count: 00002
Net Wt: **40.00** LBS
N072814KCSFLV Product of USA Pilgrim's Pride Corporation, 1770 Promontory Circle Greeley, Colorado 80634

Item #9791 #55188 Split Thigh & Leg **Halal** 40lbs Ice Pack
64 Legs & 64 Thighs per case Avg. (Cut from a 3.5lb Chicken)

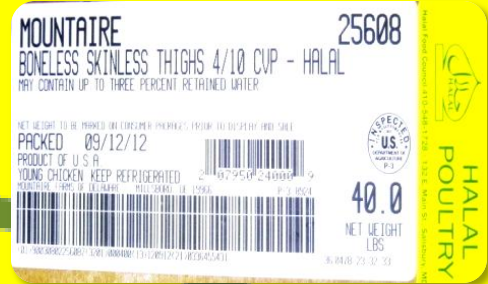


PEACE BRAND KEEP REFRIGERATED OR FROZEN
000055188 4217052000 98005 Packed On: 08/05/2014
INSPECTED U.S. DEPARTMENT OF AGRICULTURE
P- 810
ALL NATURAL* CHICKEN DRUMSTICKS AND THIGHS WITH BACKS
*MINIMALLY PROCESSED NO ARTIFICIAL INGREDIENTS
Contains up to 5% retained water
Scale: 98 08:35 Case Count: 00011
Net Wt: **40.00** LBS
N071414ASFLV Product of USA - Pilgrim's Pride Corporation, 1770 Promontory Circle Greeley, Colorado 80634

Our Halal Chicken



Item #9796 #25608/156 Thigh Boneless **Halal** 40lbs CVP
(Cut from a 8lbs Chicken)



Item #9832 #55113 Wings Whole Small **Halal** 40lbs Ice Pack
200-220 Pieces per case Avg. (Cut from a 3lb Chicken)



Item #9793 #25607 Wings Whole Jumbo **Halal** 40lbs CVP
120-130 Pieces per case Avg. (Cut from a 8lb Chicken)



Item #9648 #10198 Wings Party Jumbo 40lbs CVP **HALAL *Special Order***
6-8 Pieces/lb. 300 Pieces per case Avg. (Cut from a 8lb Chicken)

Poultry In Motion



Chicken Chicks

1.855.885.WING



**If you're buying from another Distributor;
we're BOTH losing money!®**

