



US007937738B1

(12) **United States Patent**  
**Gurantz**

(10) **Patent No.:** **US 7,937,738 B1**  
(45) **Date of Patent:** **May 3, 2011**

(54) **VARIABLE MODULATION UNICAST SYSTEM**

(75) Inventor: **Itzhak Gurantz**, San Diego, CA (US)

(73) Assignee: **Entropic Communications, Inc.**, San Diego, CA (US)

(\* ) Notice: Subject to any disclaimer, the term of this patent is extended or adjusted under 35 U.S.C. 154(b) by 1242 days.

(21) Appl. No.: **10/925,365**

(22) Filed: **Aug. 23, 2004**

(51) **Int. Cl.**  
**H04N 7/173** (2011.01)

(52) **U.S. Cl.** ..... **725/118**

(58) **Field of Classification Search** ..... 725/118  
See application file for complete search history.

(56) **References Cited**

U.S. PATENT DOCUMENTS

- 5,764,699 A \* 6/1998 Needham et al. .... 375/261
- 6,272,190 B1 \* 8/2001 Campana, Jr. .... 375/347

- 6,456,627 B1 \* 9/2002 Frodigh et al. .... 370/465
- 6,804,211 B1 \* 10/2004 Klein et al. .... 370/329
- 7,085,306 B1 \* 8/2006 Voldman et al. .... 375/132
- 2003/0013451 A1 \* 1/2003 Walton ..... 455/447
- 2004/0100588 A1 \* 5/2004 Hartson et al. .... 348/608
- 2005/0100050 A1 \* 5/2005 Huang et al. .... 370/476
- 2005/0114904 A1 \* 5/2005 Monk et al. .... 725/118

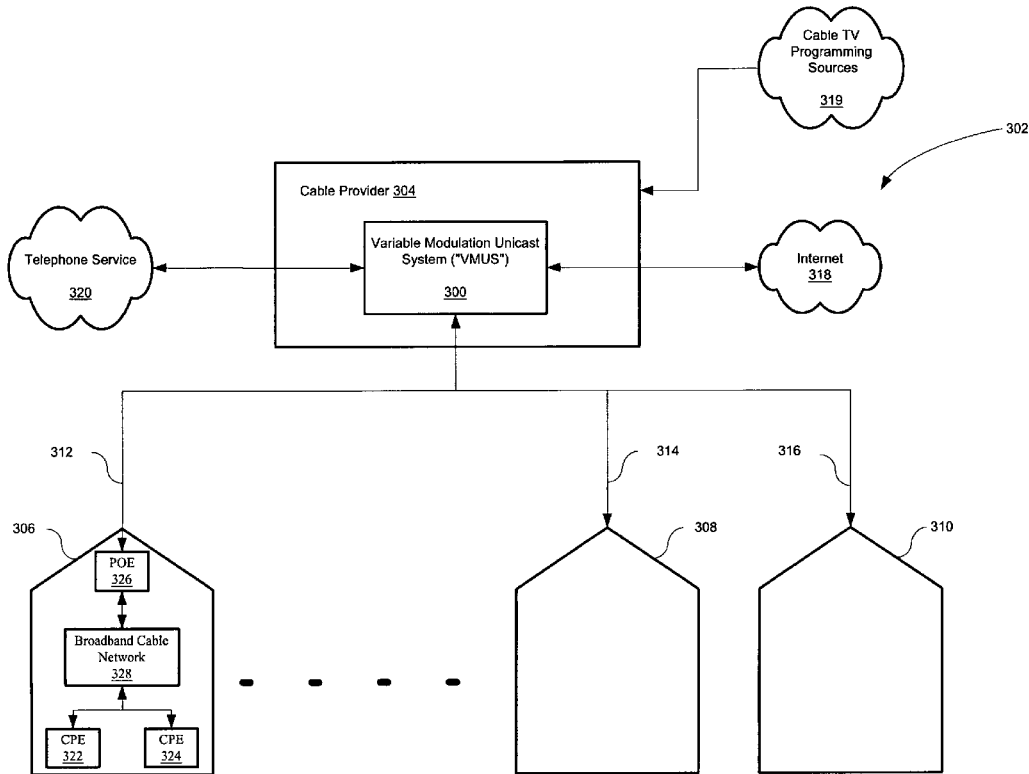
\* cited by examiner

*Primary Examiner* — Christopher Kelley  
*Assistant Examiner* — Mulugeta Mengesha  
(74) *Attorney, Agent, or Firm* — Francisco A. Rubio-Campos; Bruce W. Greenhaus

(57) **ABSTRACT**

A system is described that consists of a variable modulation unicast system that utilizes multiple modulation schemes in a cable network for unicast applications and is capable of assigning users to different channels of differing modulation schemes in the network based on a feedback signal received in response to a transmitted probe signal. The system may also, in response to the feedback signal from a remote device in the network, assign a channel from a plurality of channels having differing carrier frequencies and modulation schemes to the remote device and may also modify the carrier frequencies of the channels.

**2 Claims, 8 Drawing Sheets**



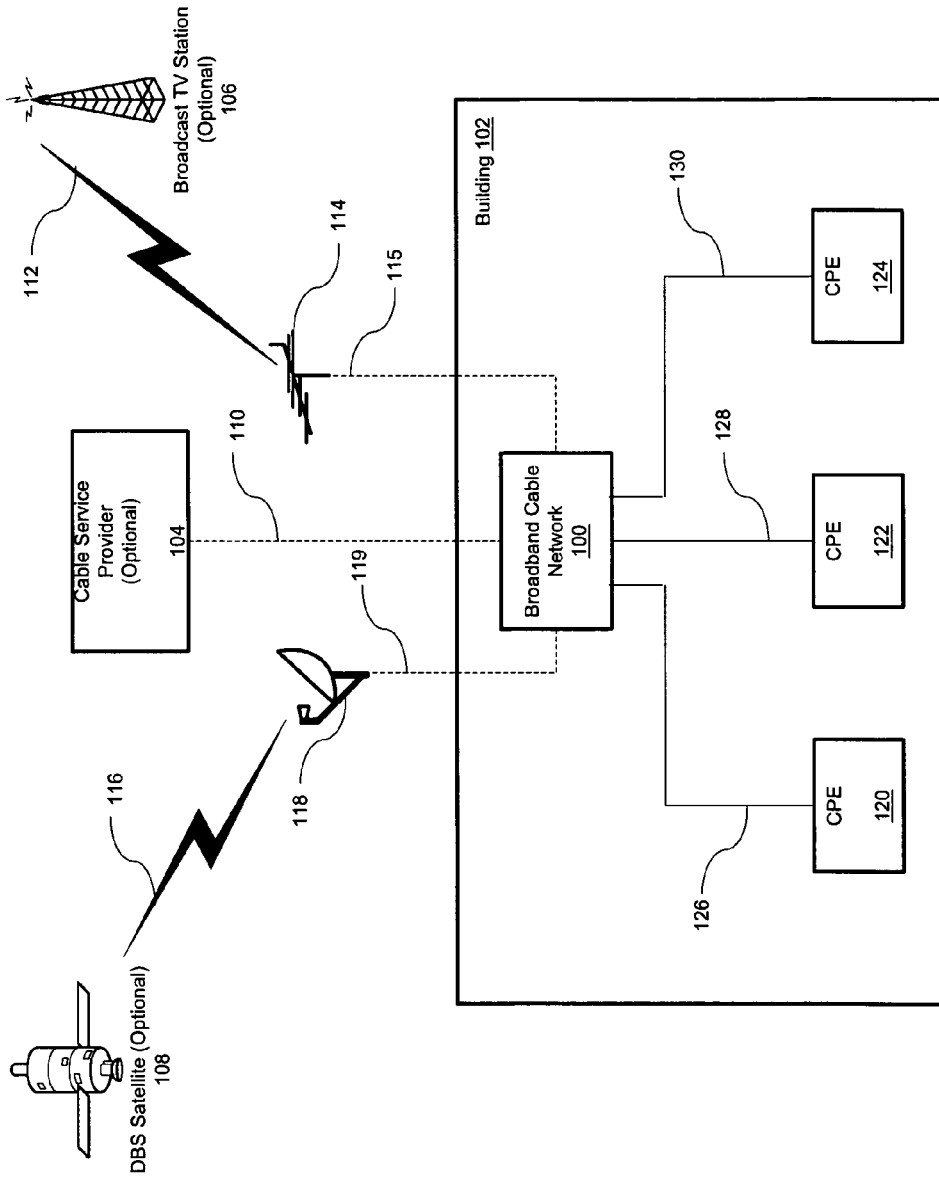


FIG. 1 (Prior Art)

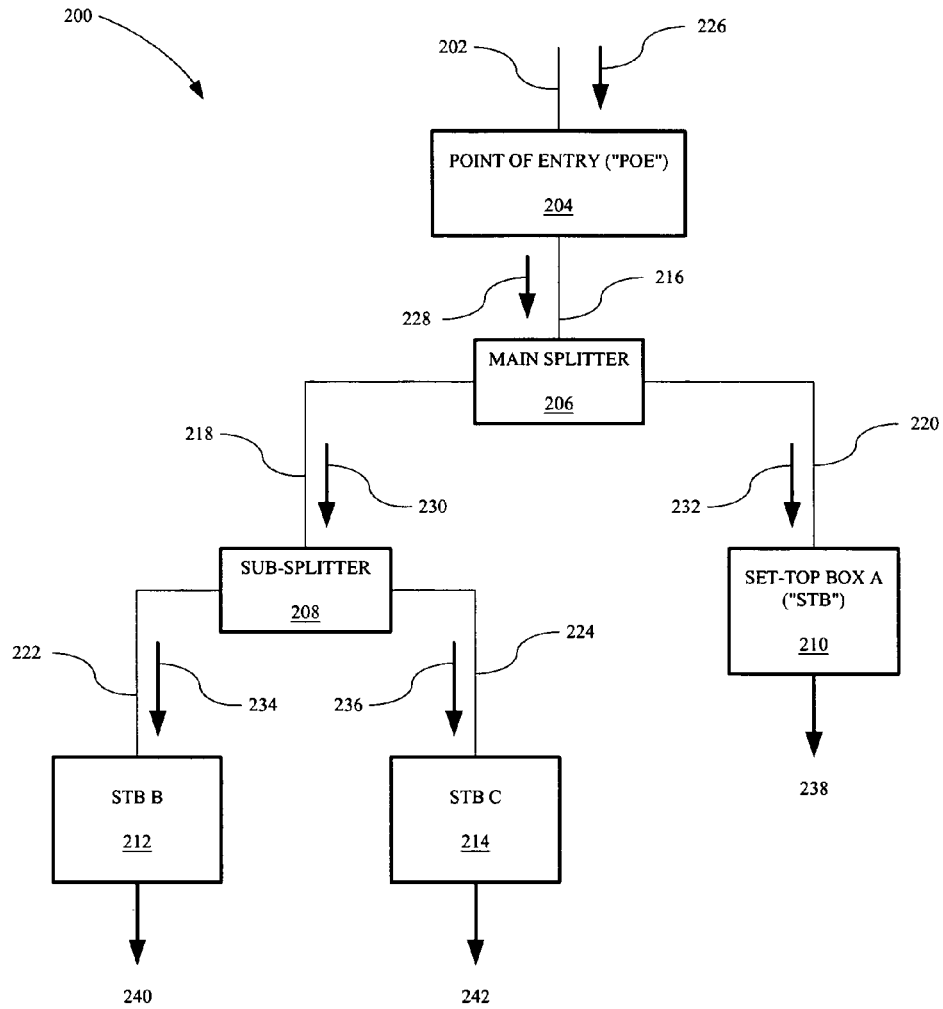


FIG. 2 (Prior Art)

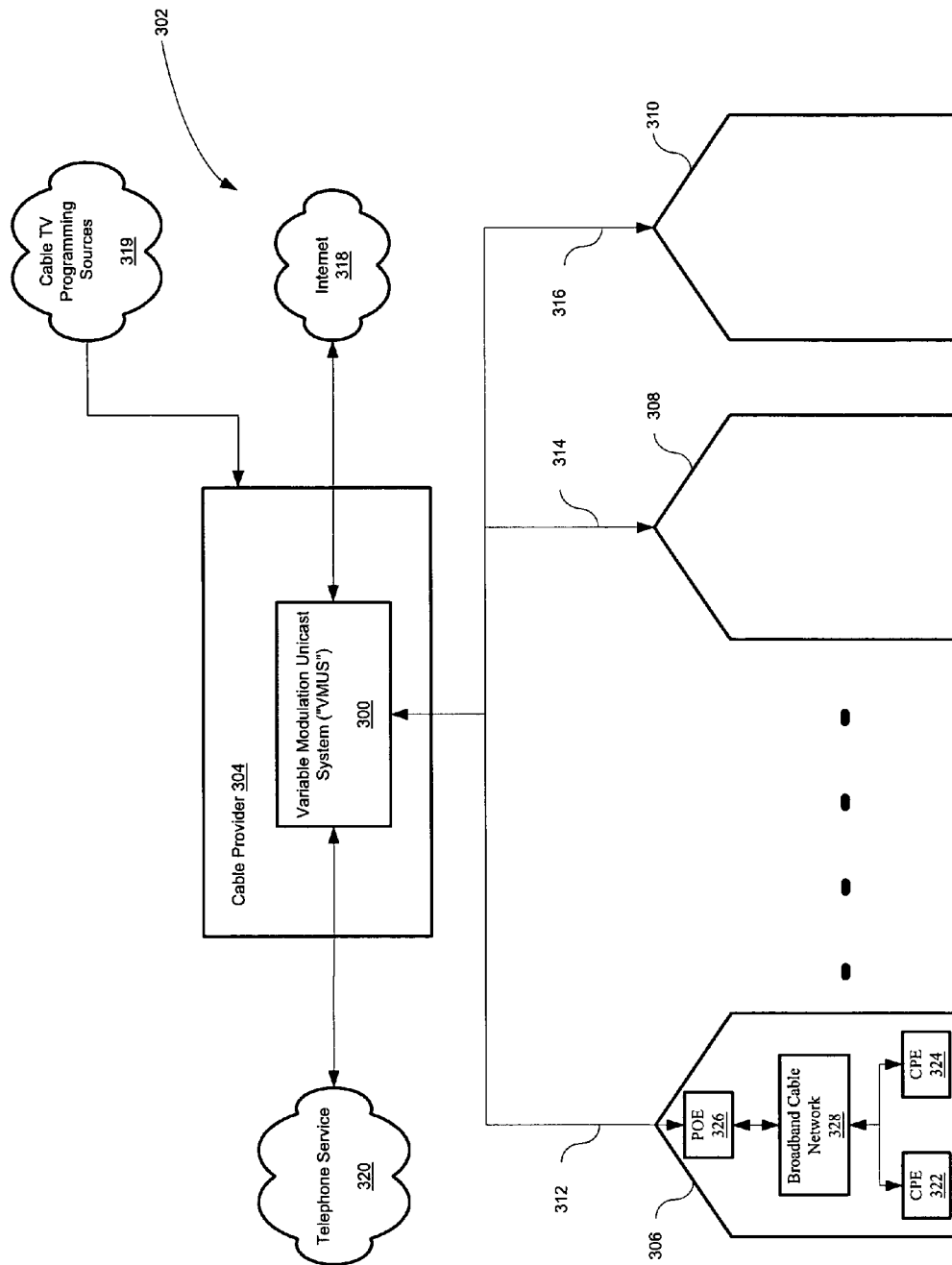


FIG. 3

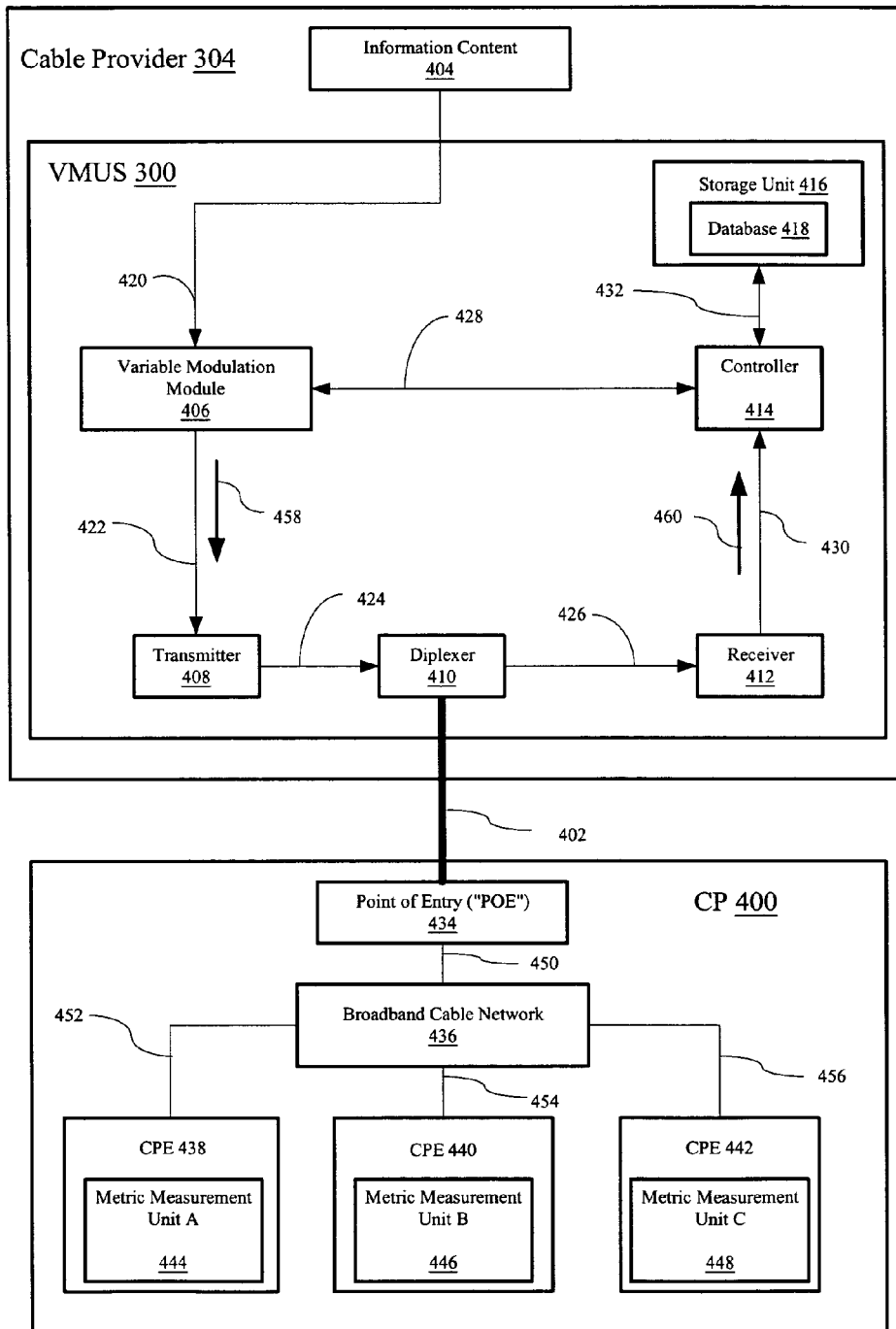


FIG. 4

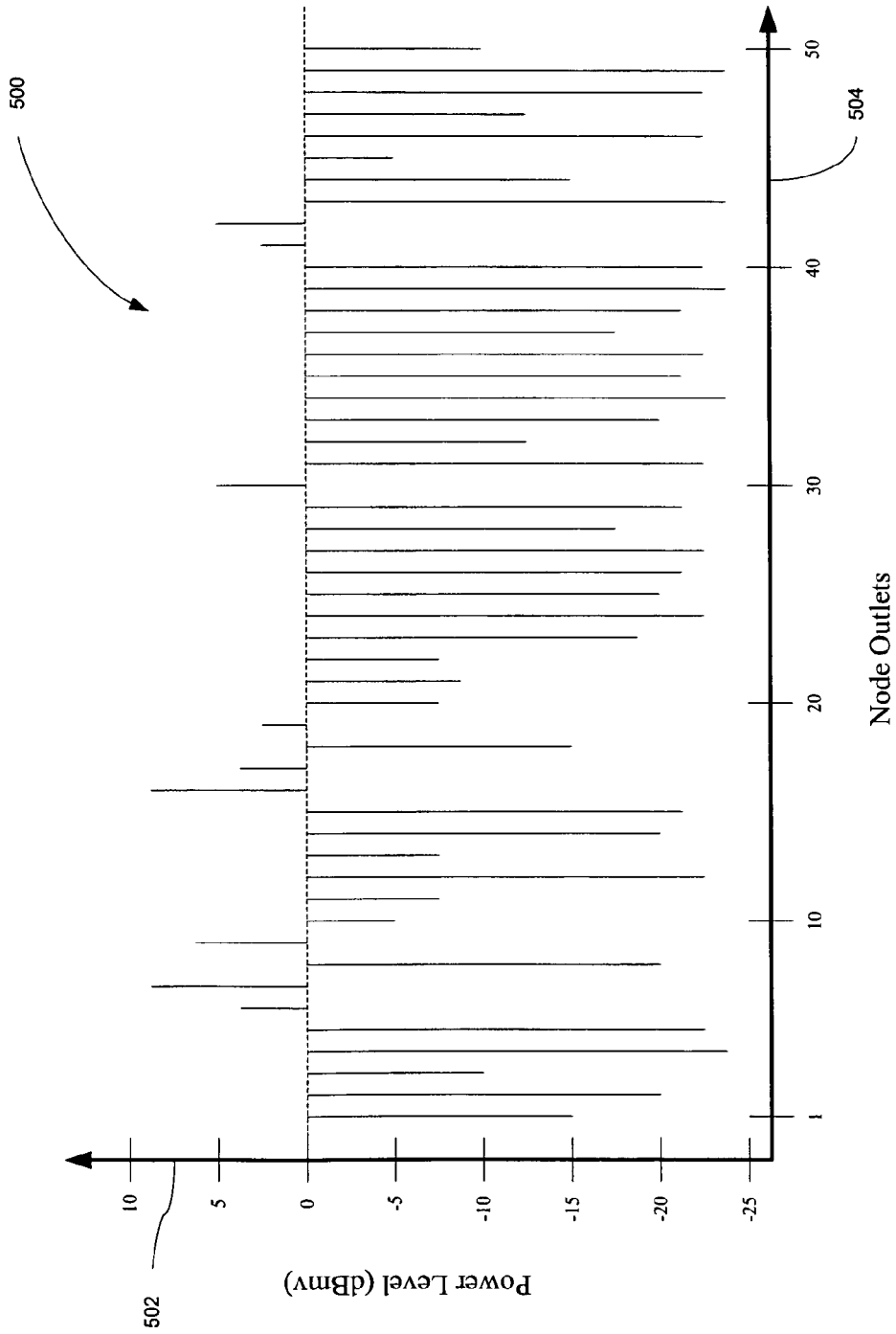


FIG. 5

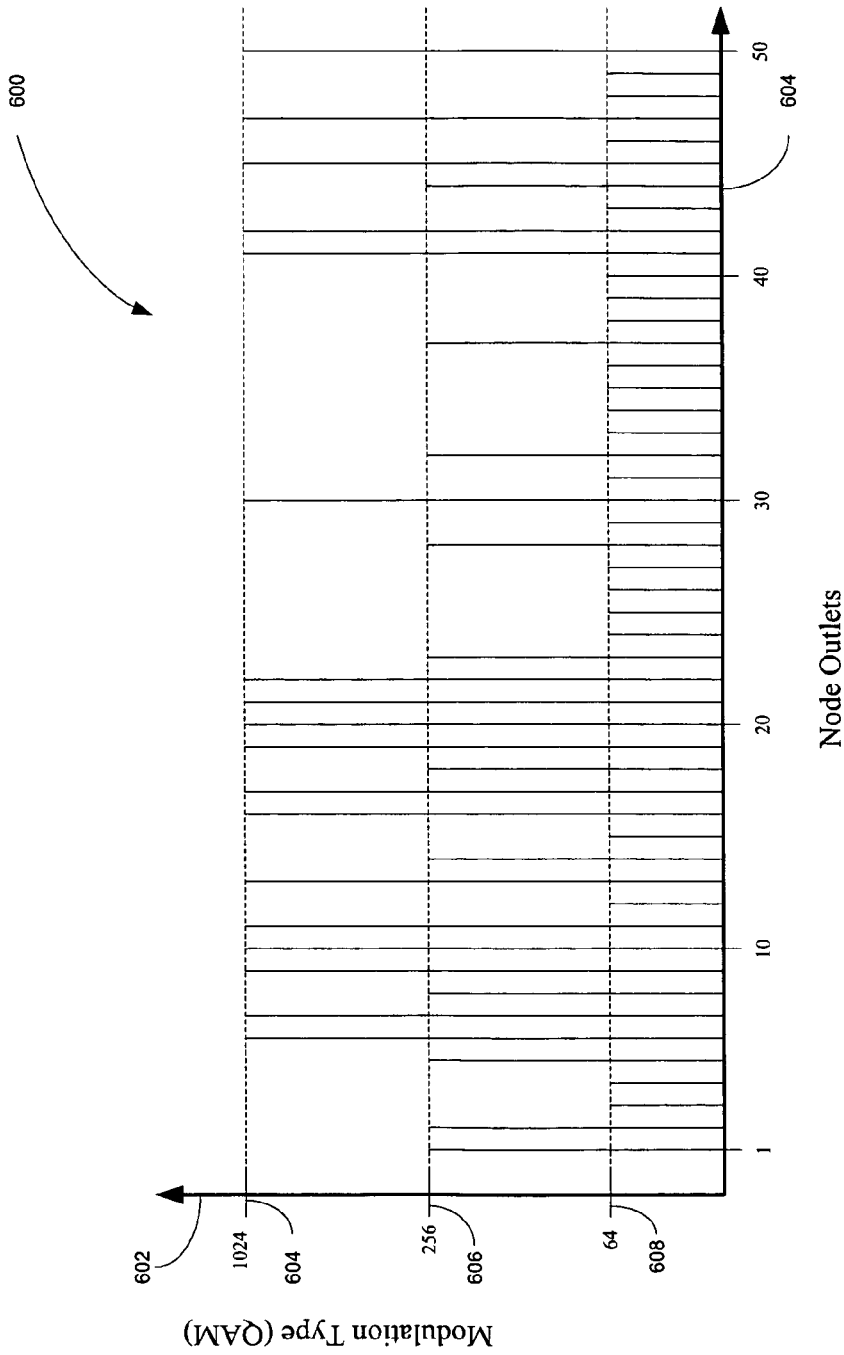


FIG. 6

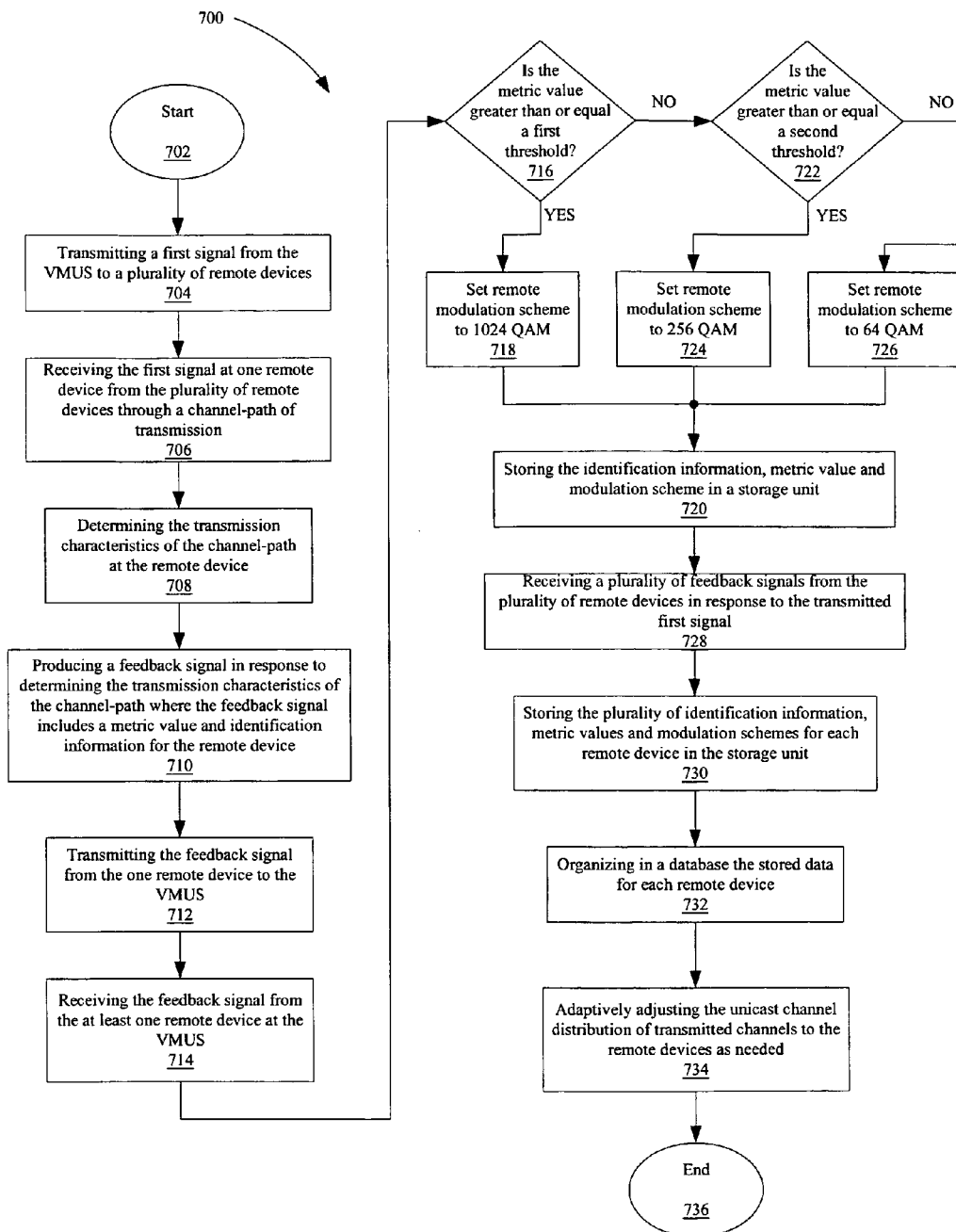


FIG. 7



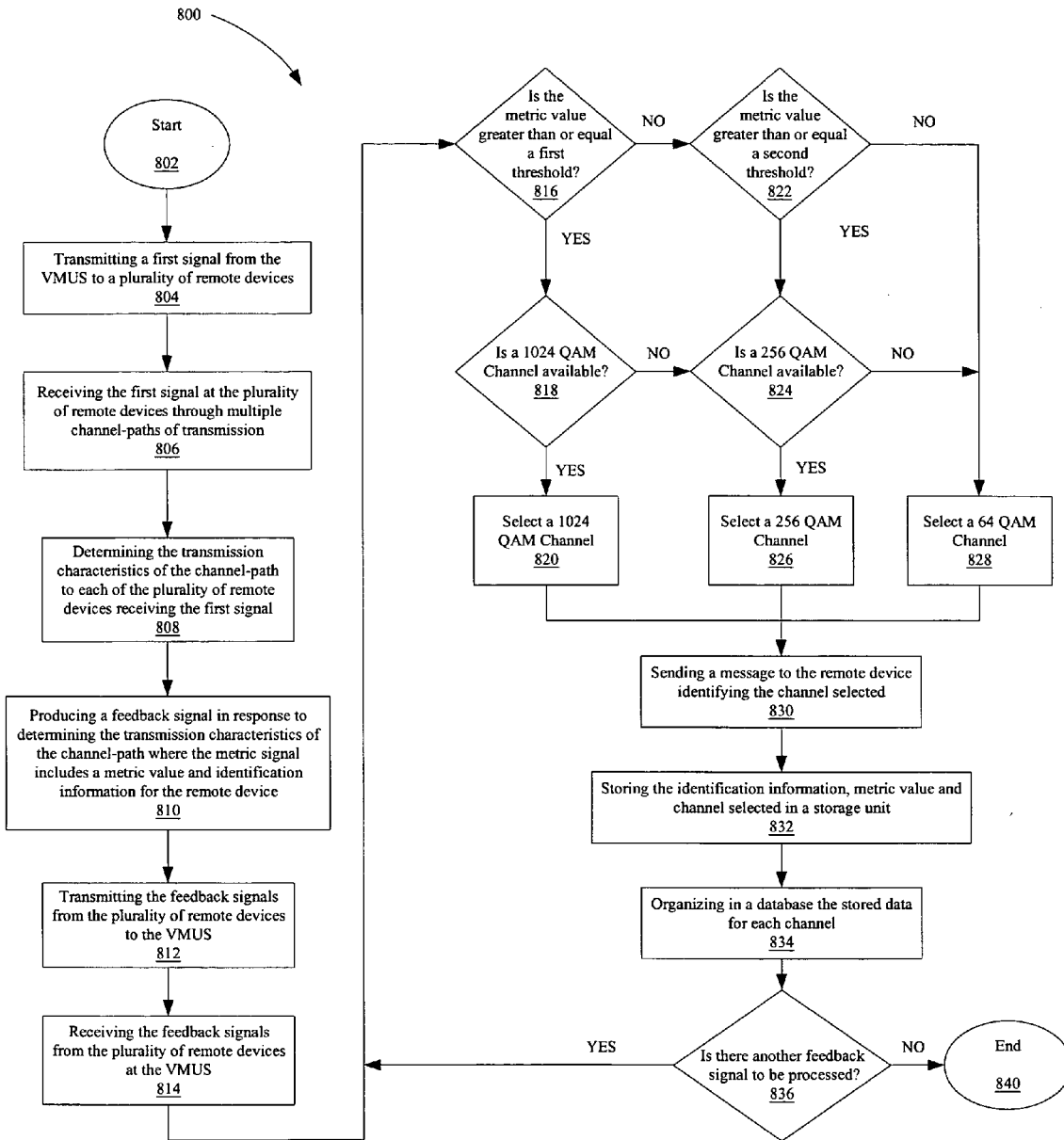


FIG. 8

## VARIABLE MODULATION UNICAST SYSTEM

### BACKGROUND OF THE INVENTION

#### 1. Field of Invention

The invention relates to broadband communication networks and in particular to broadband communication networks utilizing coaxial cable.

#### 2. Related Art

The worldwide utilization of external television (“TV”) antennas for receiving broadcast TV signals, and of cable TV and satellite TV is growing at a rapid pace. These television signals from an external TV antenna, cable TV and satellite TV (such as from direct broadcast satellite “DBS” systems) are usually received externally to a building (such as a home or an office) at a point-of-entry (“POE”). There may be multiple TV receivers and/or video monitors within the building and these multiple TV receivers may be in signal communication with the POE via a broadband cable network that may include a plurality of broadband cables and broadband cable splitters. Generally, these broadband cable splitters distribute downstream signals from the POE to various terminals (also known as “nodes”) in the building. The nodes may be connected to various types of customer premise equipment (“CPE”) such as cable converter boxes, televisions, video monitors, cable modems, cable phones and video game consoles.

Typically, these broadband cable networks are implemented utilizing coaxial cables and coaxial cable splitters, respectively. Additionally, in the case of cable TV or satellite TV, the multiple TV receivers may be in signal communication with the broadband cable network via a plurality of cable converter boxes, also known as set-top boxes (“STBs”), that are connected between the multiple TV receivers and the broadband cable network via a plurality of network nodes.

Typically, a STB connects to a coaxial cable from a network node (such as the wall outlet terminal) to receive cable TV and/or satellite TV signals. Usually, the STB receives the cable TV and/or satellite TV signals from the network node and converts them into tuned TV signals that may be received by the TV receiver and/or video signals that may be received by a video monitor.

In FIG. 1, an example known broadband cable network **100** (also known as a “cable system” and/or “cable wiring”) is shown within a building **102** (also known as customer premises or “CP”) such as a typical home or office. The broadband cable network **100** may be in signal communication with an optional cable service provider **104**, optional broadcast TV station **106**, and/or optional DBS satellite **108**, via signal path **110**; signal path **112**, external antenna **114** and signal path **115**; and signal path **116**, DBS antenna **118** and signal path **119**; respectively. The broadband cable network **100** also may be in signal communication with optional CPEs **120**, **122** and **124**, via signal paths **126**, **128** and **130**, respectively.

In FIG. 2, another example known broadband cable network is shown within a building (not shown) such as a typical home. The cable network **200** may be in signal communication with a cable provider (not shown), and/or satellite TV dish (not shown), and/or external antenna (not shown) via a signal path **202** such as a main coaxial cable from the building to a cable connection switch (not shown) outside of the building. The cable network **200** may include a POE **204** and main splitter **206**, a sub-splitter **208**, and STBs A **210**, B **212** and C **214**.

Within the cable network **200**, the POE **204** may be in signal communication with main splitter **206** via signal path

**216**. The POE **204** may be the connection point from the cable provider, which is, located external to the building of the cable network **200**. The POE **204** may be implemented as a coaxial cable connector, transformer and/or filter.

The main splitter **206** may be in signal communication with sub-splitter **208** and STB A **210** via signal paths **218** and **220**, respectively. The sub-splitter **208** may be in signal communication with STB B **212** and STB C **214** via signal paths **222** and **224**, respectively. The main splitter **206** and sub-splitter **208** may be implemented as coaxial cable splitters. The STBs A **210**, B **212** and C **214** may be implemented by numerous well-known STB coaxial units such as cable television set-top boxes and/or satellite television set-top boxes. Typically, the signal paths **202**, **216**, **218**, **220**, **222** and **224** may be implemented utilizing coaxial cables.

In an example operation, the cable network **200** would receive CATV, and/or broadcast TV and/or satellite TV signals **226** via signal path **202** at the POE **204**. The POE **204** may pass, transform and/or filter the received RF signals to a second RF signal **228** that may be passed to the main splitter **206** via signal path **216**. The main splitter **206** may then split the second RF signal **228** into split RF signals **230** and **232**. The split RF signal **230** is then passed to the sub-splitter **208** and the split RF signal **232** is passed to the STB A **210** via signal paths **218** and **220**, respectively. Once the split RF signal **232** is received by the STB A **210**, the STB A **210** may convert the received split RF signal **232** into a baseband or RF signal **238** that may be passed to a video monitor or a TV set (not shown) in signal communication with the STB A **210**.

Once the split RF signal **230** is received by the sub-splitter **208**, the sub-splitter **208** splits the received split RF signal **230** into sub-split RF signal **234** and **236** that are passed to STB B **212** and STB C **214** via signal paths **222** and **224**, respectively. Once the sub-split RF signals **234** and **236** are received by the STB B **212** and STB C **214**, the STB B **212** and STB C **214** may convert the received sub-split RF signals **234** and **236** into baseband or RF signals **240** and **242**, respectively, that may be passed to video monitors or TV sets (not shown) in signal communication with STB B **212** and STB C **214**, respectively.

Unfortunately, the cable network **200** may introduce significant losses from the POE **204** to STB A **210**, STB B **212** and STB C **214** based on the quality of the splitters and coaxial cables. These losses may result in degraded signal levels at STB A **210**, STB B **212** and STB C **214**. In the past, while utilizing analog transmission schemes, these degraded signal levels usually resulted in some loss in reception quality at STBs as evidenced by such anomalies as ghost and noisy images on some attached video monitors or TV sets.

Unfortunately, these problems have become more important as many cable television providers transition from analog to digital transmissions. Unlike analog transmissions, digital transmissions do not gradually degrade with the transmission channel path performance. Typically, digital transmissions operate in an all or nothing fashion because if the performance of the transmission channel supports the digital transmission, the digital transmission is transmitted through the channel with sufficient quality that results in no visual degradation. Alternatively, if the performance of the transmission channel does not support the digital transmission, the digital transmission will transmit through the channel in a degraded fashion that may result in no video output at the corresponding STB.

Generally, the United States Federal Communication Commission (“FCC”) recommends that analog channels be transmitted at 0 dBmV power level at the TV set in order to produce high quality video signals. However, most cable

providers currently transmit digital transmissions at lower power levels because digital transmissions are more robust.

Presently, many cable providers that transmit digital cable signals utilize quadrature amplification modulation (“QAM”) modulation schemes. Multi-level QAM modulation schemes are well known to those skilled in the art. Typically most cable providers that transmit digital cable signals utilize 64 QAM and 256 QAM modulation schemes and many cable providers are considering transmitting digital cable signals at 1024 QAM.

Unfortunately, digital modulation schemes only operate over channels that have good enough transmission performance capable of supporting the given digital modulation scheme. The higher the digital modulation scheme the higher the needed performance of the channel.

The coaxial cable distribution to a building is controlled by the cable company and typically conforms to well-defined criteria. The in-home cable distribution is typically provided by the homebuilder and is not well controlled, thus possibly resulting in a wide variation in reception. In a typical building the performance of the coaxial cable depends on the coaxial cable distribution and the performance of the building cable wiring in the broadband cable network. The measurement of the total signal performance is represented by the output power received at each node (not shown) connecting the broadband cable network at the different CPEs (such as CPEs). Typically, the output power at each node experiences a large amount of power variance from node to node that may be a result of the splitters and cables within the broadband cable network.

If the output power level at any node is below the needed power level to support the digital modulation scheme transmitted by the cable provider, the cable provider will have to remediate to ensure adequate performance. Usually, the output power level is measured as a signal metric such as the signal-to-noise ratio (“SNR” or “S/N”) of the received signal at the CPE attached at the node, or the received power level P.

As an example, in most cable set-top boxes (“STB”) used as a CPE, a 64 QAM modulation scheme typically requires about 23 to 24 dBmV SNR to operate. Similarly, 256 QAM requires about 30 to 32 dBmV and 1024 QAM requires about 36 to 38 dBmV.

If the SNR is not high enough to support the transmitted digital signal then the cable provider must remediate by means that include either amplifying the transmitted signal at the POE or elsewhere, running new cable from the POE to the node having the problem, or transmitting a lower order digital modulation scheme. Unfortunately, infrastructure remediation is difficult, time consuming, labor intensive and expensive.

As a result, many cable providers find it difficult to transmit higher than 64 or 256 QAM signals even though much of the cable plant might be able to support higher constellations. Unfortunately, the lower modulation scheme results in cable providers utilizing the cable bandwidth less efficiently. This results in a lower number of options for special unicast services such as cable modem applications and video on demand (“VoD”) services.

With the advent of cable modems and VoD, more and more end users are demanding these services. Cable providers, however, only have limited bandwidth to with which to operate.

Therefore, there is a need for a system and method to reduce the bandwidth limitations of the existing cable network for unicast applications such as cable modem and VoD transmission. Additionally, there is a need for a system and

method to vary the digital modulation scheme for transmitting to each CPE in a cable network in order to optimize the cable provider’s bandwidth.

## SUMMARY

A system is described that consists of a variable modulation unicast system that utilizes multiple modulation schemes in a cable network for unicast applications and is capable of assigning users to different channels of differing modulation schemes in the network. As an example of operation, the variable modulation unicast system transmits a first signal to at least one remote device of a plurality of remote devices, receives a feedback signal from the at least one remote device in response to the transmitted probe signal, and determines the modulation scheme in response to the feedback signal. The variable modulation unicast system may also, in response to the feedback signal, assign a channel from a plurality of channels having differing carrier frequencies and modulation schemes, to a remote device in the network. As another example of operation, the variable modulation unicast system may also receive a feedback signal from at least one remote device of a plurality of remote devices that includes a direct request or a direct command for a specific modulation scheme, and then assign a channel having that modulation scheme to that at least one remote device. The variable modulation unicast system is also capable of modifying the carrier frequencies of the channels.

Other systems, methods, features and advantages of the invention will be or will become apparent to one with skill in the art upon examination of the following figures and detailed description. It is intended that all such additional systems, methods, features and advantages be included within this description, be within the scope of the invention, and be protected by the accompanying claims.

## BRIEF DESCRIPTION OF THE DRAWINGS

The invention can be better understood with reference to the following figures. The components in the figures are not necessarily to scale, emphasis instead being placed upon illustrating the principles of the invention. In the figures, like reference numerals designate corresponding parts throughout the different views.

FIG. 1 is a block diagram of an example of an implementation of a known broadband cable network within a building.

FIG. 2 is a block diagram of another example of an implementation of a known broadband cable network within the building shown in FIG. 1.

FIG. 3 is a block diagram of an example of an implementation of a variable modulation unicast system within a cable network in accordance with the present invention.

FIG. 4 is a block diagram of an example of an implementation of the variable modulation unicast system shown in FIG. 3.

FIG. 5 is a graph of an example of a plot of the power level versus node output for each receiving node in a cable network similar to the one shown in FIG. 3.

FIG. 6 is a graph of an example of a plot of the modulation scheme type versus node output for each receiving node in the cable network shown in FIG. 3 corresponding to the power levels shown in the plot of FIG. 4.

FIG. 7 is a flowchart illustrating an example of a method performed by the variable modulation unicast system shown in FIG. 3.

FIG. 8 is a flowchart illustrating another example of a method performed by the variable modulation unicast system.

#### DETAILED DESCRIPTION

In the following description of the preferred embodiment, reference is made to the accompanying drawings that form a part hereof, and in which is shown by way of illustration a specific embodiment in which the invention may be practiced. It is to be understood that other embodiments may be utilized and structural changes may be made without departing from the scope of the present invention.

FIG. 3 is a block diagram of an example of an implementation of a variable modulation unicast system (“VMUS”) 300 within a cable network 302 in accordance with the present invention. The cable network 302 may also include a cable provider 304 and a plurality of customer premises (“CPs”) 306, 308 and 310 where each CP 306, 308 and 310 may be a building such as a multi-dwelling unit or a home. It is appreciated that while only three CPs 306, 308 and 310 are shown, the cable network 302 may include any number of CPs. Each CP may be in signal communication with the VMUS 300 via signal paths 312, 314 and 316, respectively. Additionally, the cable provider 304 also may be in signal communication with the Internet 318 and the telephone system and cable TV programming sources 319.

As an example, CP 306 may be a home with two remote devices receiving cable television programming from the cable provider 304. Examples of the two remote devices may be two customer premises equipment (“CPEs”) 322 and 324. In this example, CP 306 may include a point-of-entry (“POE”) 326, a broadband cable network 328 and the two CPEs 322 and 324. The CPEs 308 and 310 may include, for example, set-top converter boxes (“STBs”) for converting the received cable signals into video signals, cable-ready televisions, cable telephones, video monitors, video game consoles, cable-ready components and appliances and cable modems.

Again, it is appreciated that while only two remote devices (CPEs 322 and 324) are shown, the CP 306 may include any number of remote devices. As an example, many people today have numerous televisions sets in their homes and many also have cable modems for connecting to the Internet 318 as well as cable telephones for connecting to the telephone system 320 via the cable network 302. Additionally, numerous CPs (including CPs 308 and 310) may also have numerous remote devices that may be similar to CPE 322 and CPE 324.

The POE 326 may be any connection, coupler, switch, filter and/or relay that is capable of connecting the signal path 312 from the cable provider 304 to the broadband cable network 328. The broadband cable network 328 may include a plurality of broadband cables (not shown) and broadband cable splitters (not shown). These broadband cables and broadband cable splitters may be implemented utilizing coaxial cables and coaxial cable splitters, respectively. Additionally, the broadband cable splitters may distribute downstream signals from the POE 326 to various terminals (also known as “nodes”) in the building. The nodes (not shown) are connected to CPEs 322 and 324. Also, the broadband cable network 328, in addition to coaxial cables and splitters, may include additional passive and active devices such as bi-directional and/or uni-directional amplifiers, filters, diplexers and other RF components and subsystems.

As an example of operation, the VMUS 300 may be utilized to reduce the bandwidth limitations of the cable network 302 for unicast applications such as cable modem and video-

on-demand (“VoD”) transmission to the remote devices (such as CPE 322 and CPE 324) on the cable network 302. In general, the VMUS 300 reduces the bandwidth limitation of the cable network 302 by varying the digital modulation schemes utilized for transmitting to each remote device in the cable network 302 in order to optimize the bandwidth of the cable network 302.

In operation, the VMUS 300 may transmit a first signal to at least one remote device from a plurality of remote devices, where the first signal utilizes a first modulation scheme. The VMUS 300 may then receive a feedback signal from the remote device, where the feedback signal may include identification information for the remote device and a first metric value representative of the transmission characteristics of a channel-path to the remote device. In response to the received feedback signal, the VMUS 300 may determine a second modulation scheme that it may utilize to transmit a second signal to the remote device. The VMUS 300 may also assign a home-channel, having a home-channel frequency, to the remote device in response to the received first metric value and identification information for the remote device. The VMUS 300 may then transmit the second signal to the remote device utilizing the home-channel.

An example of an architecture for the VMUS 300 may include a transmitter (not shown) capable of transmitting a first signal to at least one remote device, where the first signal utilizes a first modulation scheme. The VMUS 300 may also include a receiver (not shown) capable of receiving a feedback signal from the remote device in response to the transmitted first signal, where the feedback signal includes identification information for the remote device and a first metric value representative of the transmission characteristics of a channel-path to the remote device. The VMUS 300 may further include a controller (not shown) capable of determining a second modulation scheme in response to the received first metric signal and instructing the transmitter to transmit a second signal to the remote device, where the second signal utilizes the second modulation scheme.

In FIG. 4, a block diagram of the VMUS 300 is shown in signal communication with the CP 400 via signal path 402. The VMUS 300 is located at a premises of the cable provider 304 and may be in signal communication with information content 404 provided by the cable provider 304 to the CP 400. As an example of an implementation of the architecture, the VMUS 300 may include a variable modulation module 406, transmitter 408, diplexer 410, receiver 412, controller 414 and storage unit 416 having a database 418. The variable modulation module 406 may be in signal communication with the information content 404 and transmitter 408 via signal paths 420 and 422, respectively. The diplexer 410 may be in signal communication with transmitter 408 and receiver 412 via signal paths 424 and 426, respectively. The controller 414 may be in signal communication with the variable modulation module 406, receiver 412 and storage unit 416 via signal paths 428, 430 and 432, respectively.

The CP 400 may include POE 434, broadband cable network 436 and remote devices CPE 438, CPE 440 and CPE 442. The CPE 438 may include a metric measurement unit A 444, CPE 440 metric measurement unit B 446, and CPE 442 metric measurement unit C 448. The broadband cable network 436 is in signal communication with POE 434, CPE 438, CPE 440 and CPE 442 via signal paths 450, 452, 454 and 456, respectively. Again, it is appreciated that while only three CPEs 438, 440 and 442 are shown, CP 400 may include any number of CPEs. The CPEs 438, 440 and 442 may include, for example, STBs, cable-ready televisions, cable

telephones, video monitors, video game consoles, cable-ready components and appliances and cable modems.

The POE **434** may be any connection, coupler, switch, filter and/or relay that is capable of connecting the signal path **402** from the cable provider **304** to the broadband cable network **436**. The broadband cable network **436** may include a plurality of broadband cables (not shown), broadband cable splitters (not shown), and unidirectional or bidirectional amplifiers (not shown) or other devices. These broadband cables and broadband cable splitters may be implemented utilizing coaxial cables and coaxial cable splitters, respectively. Additionally, the broadband cable splitters may distribute downstream signals from the POE **434** to CPEs **438**, **440** and **442** through the signal paths **452**, **454** and **456**, respectively, and may distribute upstream signals from CPEs **438**, **440** and **442** through the signal paths **452**, **454**, and **456**, respectively.

The variable modulation module **406** is capable of transmitting QAM (i.e., Quadrature Amplitude Modulation) signals over multiple channels at different modulations and of switching the modulation scheme utilized by each channel in modulating the information content **404** based on the instructions from the controller **414** via signal path **428**. The VMUS **300**, utilizing instructions from the controller **414** via signal path **428** to the variable modulation module **406**, is also capable of switching content from one modulated channel at one frequency to another modulated channel (with similar or different modulation and/or modulation scheme) at a different frequency. Examples of variable modulation module **406** include the Motorola® SmartStream Encryptor Modulator (SEM) and the Scientific-Atlanta® Model D9476 16/64/128/256 Modulator (for broadcast).

The transmitter **408** may be a standard cable-type headend transmitter that is well known to those skilled in the art. The transmitter **408** is capable of transmitting the modulated signal **458** produced by the variable modulator module **406** to CP **400**. An example of transmitter **408** is the Motorola® Commander 8 (CM8) upconverter.

The receiver **412** may be the standard cable type upstream receiver at the cable provider **304** capable of receiving control signals from the remote devices (such as CPEs **438**, **440** and **442**), and can be a DOCSIS or an out-of-band (OOB) receiver utilized for receiving cable modem return channel or STB return channel information. Examples of receiver **412** include the Motorola® Omnistar® Dual Return Path Receiver and the Scientific-Atlanta® Atlas Mk II-Digital Terrestrial Receiver. The receiver **412** may receive control signals from the remote devices and pass the control information **460** to the controller **414** via signal path **430**. The diplexer **410** may be any standard diplexer capable of allowing the transmitter **408** to transmit signals to CP **400**, via signal paths **424** and **402**, while also allowing the receiver **412** to receive control signals from CP **400** via signal paths **402** and **426**. The transmitter **408** and the receiver may comprise a single unit (for example, the Scientific-Atlanta® Prisma GbE™ Optical Transmitter/Receiver/Transceiver). Also, the variable modulation module **406** and the transmitter **408** may comprise a single unit (for example, the Scientific-Atlanta® Continuum DVP™ Dense QAM Array [for Voice-on-Demand delivery]).

The controller **414** may be any processor, microprocessor, and/or microcontroller type of device capable of controlling the modulation scheme produced by the variable modulation module **406**. Examples of the controller **414** include the Motorola® NC 1500 Network Controller and the Scientific-Atlanta® C-100 Multiplexer Controller. The controller **414** may be in signal communication with the storage unit **416** for storing data relating to the feedback signals received from the remote devices. The storage unit **416** may include a memory

unit such as a flash non-volatile memory, read-access memory ("RAM") or any other type of memory storage device. The storage unit **416** may also include a database **418** stored within the memory unit for storing the control-related information from the remote devices.

The metric measurement unit A **444**, metric measurement unit B **446** and metric measurement unit C **448** may be any measurement device capable of measuring signal metric values at the remote devices CPE **438**, **440** and **442**, respectively. Examples of the metric values may include the signal-to-noise ratio (also known as the "SNR" and "S/N"), the bit-error rate ("BER"), the packet error rate ("PER"), and the power level and any other similar measurement of the received signal at the corresponding remote device. However, other signal-performance metric values are also possible without departing from the scope of the invention.

The metric values measured by the metric measurement unit A **444**, metric measurement unit B **446** and metric measurement unit C **448** or a representative metric value derived from a plurality of such metric values, may be selectively transmitted to the VMUS **300** by way of the feedback signal in order to determine the signal performance of the received signals from the VMUS **300** at the remote devices. As an alternative to a metric value or a representative metric value, the feedback signal may include a direct request or a direct command from the corresponding CPE (**438**, **440** or **442**) to the controller **414** to send future information to the CPE (**438**, **440** or **442**) at a given modulation scheme, such as 64, 256 or 1024 QAM. In this case, the CPE itself utilizes the metric information to compute a corresponding modulation scheme and informs the controller **414** about the desired modulation together with the identity of the sending CPE. The controller **414** receives the information through the receiver **412**, verifies that an appropriate carrier with the appropriate modulation scheme is available, informs the CPE (**438**, **440**, **442**) about the transition and then sends all future unicast information to the CPE (**438**, **440**, **442**) over the new modulation scheme.

In operation, the VMUS **300** transmits a first signal to the plurality of remote devices that include CPE **438**, CPE **440**, CPE **442** and others. The first signal may be modulated utilizing a first modulation scheme produced by the variable modulation module **406** and transmitted on one channel. The VMUS **300** may transmit the first signal utilizing a known-channel where the known-channel has a known-channel carrier frequency. The known-channel may then function as a "log-on-channel" that allows the remote devices to tune to and receive the known-channel and access (i.e., "log-on") to the cable provider **304**.

As an example of a remote device, CPE **438** may receive the transmitted first signal and in response determine the metric value of the received first signal with metric measurement unit A **444**. The metric value may be a measure of the transmission characteristics of the channel-path from the VMUS **300** to CPE **438** where the channel-path would include the transmission path through the transmission line (such as a coaxial cable) along signal path **402**, POE **434**, the transmission line along signal path **450**, broadband cable network **436** and the transmission line along signal path **452**. If the characteristics of the transmission line along signal path **402** are known, the metric value may also be a measure of the transmission characteristics of the channel-path from the POE **434** to the CPE **438**.

In this example, the representative metric value may be derived from measured values that may include the measured SNR and/or the BER and/or the PER and/or the power level of the received first signal at CPE **438**. CPE **438** may then

produce a feedback signal that includes the representative metric value and some type of identification information for CPE 438. In the case of CPE 438 being a cable modem, the identification information may also include the Internet Protocol (“IP”) address for the CPE 438. CPE 438 then transmits the feedback signal to the VMUS 300 through signal path 452, broadband cable network 436, signal path 450, POE 434 and signal path 402. In the case of CPE 438 being a cable modem, the feedback signal may be transmitted to the VMUS 300 utilizing a control-channel defined by Data Over Cable Service Interface Specifications (“DOCSIS”). The CPE can also send back the information over the out-of-band (OOB) return channel, which is currently being utilized by cable STBs to send information back for VOD and other control functions.

The VMUS 300 receives the feedback signal with receiver 412 and produces the control information signal 460 that includes the representative metric value and identification information from the received feedback signal. The control information signal 460 is passed to the controller 414 and the controller 414 in response may determine a second modulation scheme that is better suited for unicast type transmissions to CPE 438. The controller 414 may utilize a threshold detector (not shown) to determine the second modulation scheme. If the controller 414 determines that another modulation scheme should be utilized in unicast transmissions to CPE 438, the controller 414 instructs the variable modulation module 406 to switch to another modulation scheme on a second channel when transmitting unicast services to CPE 406. The VMUS may also determine that the carrier frequency of a channel should be changed to accommodate the requirements of the system; that is, if another channel is required for the second modulation scheme, the controller 414 may instruct the variable modulation module 406 to assign a different carrier frequency to a channel, and then that channel would be used to transmit unicast services to CPE 406.

The controller 414 then stores in storage unit 416 (via signal path 432) the identification information, the representative metric value and the selected modulation scheme for CPE 438. The VMUS 300 then transmits a second signal to CPE 438 where the second signal utilizes a second modulation scheme. The second modulation scheme corresponds to the selected modulation scheme from the controller 414 and the second signal may be transmitted utilizing a new home-channel that has a home-channel carrier frequency different than the known-channel carrier frequency. In this example, CPE 438 would then potentially be able to tune to the new home-channel and receive unicast services at a different modulation scheme. Once CPE 438 tunes to the new home-channel, CPE 438 may again measure the transmission characteristics of the home-channel and send back a new feedback signal with metric values associated with the new home-channel. This allows the VMUS to again change the selected modulation scheme in response to a change in the transmission characteristics of the new home-channel.

As an example, if CPE 438 is capable of receiving signals from the VMUS 300 at 1024 QAM and CPE 440 is capable of receiving signals at 256 QAM but some other remote devices on the cable network 302 are only capable of receiving signals from the VMUS 300 at 64 QAM, the cable provider 304 typically will only transmit broadcast signals (i.e., signals transmitted to all remote devices) at 64 QAM to ensure that all remote devices receive the broadcast signals. However, the VMUS 300 allows transmission on a unicast basis to both CPE 438 and CPE 440 at modulation schemes higher than 64 QAM. These unicast transmissions may include unicast ser-

vices associated with either cable modem DOCSIS services or VoD. In this example, the VMUS 300 would transmit unicast services to CPE 438 at 1024 QAM while at the same time transmitting unicast services to CPE 440 at 256 QAM and 64 QAM to other remote devices.

The VMUS 300 may receive a plurality of feedback signals from the plurality of remote devices and store the received metric values or representative metric values, as the case may be, and identification information for each remote device in the storage unit 416. This stored information may be organized in a database 418 and this database 418 may be utilized by the VMUS 300 to adaptively adjust the unicast channel distribution of transmitted channels to the remote devices as needed.

FIG. 5 is a graph of an example of a plot 500 of the measured power level 502 in dBmV versus node number 504 for each receiving node (not shown) connected to a remote device in several cable networks similar to the one shown in 302. This graph is a summary of real cable system measurements. Typically, if the remote device is a digital STB, the noise figure of the remote device is approximately 8 dBmV, which results in approximately -49.6 dBmV noise floor for a 6 MHz cable channel. It is appreciated by those skilled in the art, that the -49.6 dBmV is calculated by taking the thermal noise in combination with the noise figure of 8 dBmV and a channel bandwidth of 6 MHz and a typical room temperature using a standard calculation. Also, for simplicity, the noise floor power level may be rounded to -50 dBmV without affecting the basics of the presented analysis.

As a result, in order to calculate the approximate SNR at a remote device the power received at the remote device is subtracted by -50 dBmV. As an example, if the power received at the remote device is -20 dBmV the resulting SNR would be 30 dBmV by subtracting the noise floor power from the signal power.

In order to receive 64 QAM at a remote device, the remote device typically needs the received signals to have about 23 to 24 dBmV of SNR. In order to receive 256 QAM, the received signals should have about 29 to 30 dBmV of SNR, and 36 to 38 dBmV of SNR is typically needed for 1024 QAM.

In FIG. 6 a graph of an example of a plot 600 of the modulation scheme type (QAM) 602 versus node number 604 for each remote device connected to a receiving node in the cable network 302 is shown. The modulation scheme type 602 values for each node number correspond to the power levels 502 shown in the plot 500, FIG. 5.

The modulation scheme types are shown as having three threshold values at 1024 QAM 604, 256 QAM 606 and 64 QAM 608. The 1024 QAM threshold 604 corresponds to signals having at least -12 dBmV of measured power level at the remote device, the 256 QAM threshold 606 corresponds to signals having at least -20 dBmV of measured power level at the remote device, and the 64 QAM threshold 606 corresponds to signals having between -20 dBmV and -26 dBmV of measured power level at the remote device. The controller 414, FIG. 4, or each of the CPEs (438, 440, 442) may utilize these threshold values to determine proper modulation schemes to transmit to particular remote device.

FIG. 7 is a flowchart 700 illustrating an example of a method performed by the VMUS 300. The process starts in step 702 and in step 704, the VMUS 300 transmits a first signal to the plurality of remote devices. In step 706, a remote device receives the first signal through a channel-path of transmission and, in step 708, the remote device determines the transmission characteristics of the channel-path by measuring the characteristics of the received first signal at the remote device. In step 710, the remote device produces a

feedback signal in response to determining the transmission characteristics of the channel-path where the feedback signal includes a metric value and identification information for the remote device. The remote device then transmits the feedback signal to the VMUS 300, in step 712, and the VMUS receives the feedback signal in step 714. The controller 414 then receives the metric value from the feedback signal and determines the modulation scheme to utilize with the remote device for unicast transmissions.

As an example, if the VMUS 300 operates utilizing the three modulation schemes of 1024 QAM, 256 QAM and 64 QAM, the controller 414 may utilize a threshold detector to determine the proper modulation scheme to use based on the value of the received metric value from the remote device. Assuming in this example that the remote device needs the received signals at the remote device to have about 36 to 38 dBmV of SNR in order to receive 1024 QAM, the controller 414 may utilize a first threshold having a value of approximately 40 dBmV. Similarly, if the remote device needs the received signals at the remote device to have about 30 dBmV of SNR in order to receive 256 QAM, the controller 414 may utilize a first threshold having a value of approximately 32 dBmV. If the received signals have less than 32 dBmV the VMUS 300 may default to transmitting at 64 QAM.

As a result, in decision step 716, if the received metric value is greater than or equal to the first threshold (such as 40 dBmV of SNR), the process continues to step 718 where the VMUS 300 sets the modulation scheme to 1024 QAM and the process continues to step 720. If instead, in decision step 716, the received metric value is less than the first threshold, the process continues instead to decision step 722.

In decision step 722, if the metric value is greater than or equal to a second threshold (such as 32 dBmV), the process continues to step 724 where the VMUS 300 sets the modulation scheme to 256 QAM and the process continues to step 720. If instead, in decision step 722, the received metric value is less than the second threshold, the process continues instead to step 726 where the VMUS 300 sets the modulation scheme to 64 QAM and the process again continues to step 720.

In step 720, the VMUS 300 stores the identification information, metric value and modulation scheme in a storage unit 416 and, in step 728, the VMUS 300 receives a plurality of feedback signals from the plurality of remote devices in response to the transmitted first signal. The VMUS 300 then stores the plurality of identification information, metric values and modulation schemes for each remote device in the storage unit 730 and, in step 732, the VMUS 300 organizes the stored data for each remote device in a database. Finally, the VMUS 300 adaptively adjusts the unicast channel distribution of the transmitted channels to the remote devices as needed based on the database in step 734. The process ends in step 736. Also, the threshold values in 716 and 816 and also in 722 and 822 can have different values at different times. For example, the process may start with an initial threshold for each of the modulation schemes, such as 40 dBmV for 1024 QAM and 32 dBmV for 256 QAM. Once a CPE modulation has been adjusted, a decision on a new threshold may be made in such a way as to prevent frequent switching from occurring. For example, if the original threshold for using 1024 QAM requires SNR greater than 40 dBmV, then switching back to 256 QAM may not occur until the SNR drops below 38 dBmV. This prevents a frequent switching back and forth if the real SNR is just around 40 dBmV and fluctuates slightly due to differences in measurements or very small differences in channel conditions. This concept also applies for all other thresholds in FIG. 7. and FIG. 8.

FIG. 8 is a flowchart 800 illustrating another example of a method performed by the VMUS 300. The process starts in step 802 and in step 804, the VMUS 300 broadcasts a first signal to the plurality of remote devices. In step 806, a plurality of remote devices receives the first signal through their respective channel-paths of transmission and, in step 808, each remote device determines the transmission characteristics of their respective channel-paths by measuring the characteristics of the received first signal at the remote device. In step 810, each remote device produces a feedback signal in response to determining the transmission characteristics of their respective channel-paths where the feedback signal includes a metric value and identification information for the remote device. The remote devices then transmit the feedback signals to the VMUS 300, in step 812, and the VMUS receives the feedback signal in step 814. As in FIG. 7, the controller 414 then receives the metric value from the feedback signal and determines the modulation scheme to utilize with a particular remote device for unicast transmissions.

Using the same example as in FIG. 7, if the VMUS 300 operates utilizing the three modulation schemes of 1024 QAM, 256 QAM and 64 QAM, the controller 414 may utilize a threshold detector to determine the proper modulation scheme to use based on the value of the received metric value from the remote device. Assuming again that the remote device needs the received signals at the remote device to have about 38 dBmV of SNR in order to receive 1024 QAM, the controller 414 may utilize a first threshold having a value of approximately 40 dBmV. Similarly, if the remote device needs the received signals at the remote device to have about 30 dBmV of SNR in order to receive 256 QAM, the controller 414 may utilize a first threshold having a value of approximately 32 dBmV. If the received signals have less than 32 dBmV the VMUS 300 may default to transmitting at 64 QAM.

As a result, in decision step 816, if the received metric value is greater than or equal to the first threshold (such as 40 dBmV of SNR), the process continues to decision step 818. If the received metric value is less than the first threshold, the process continues to decision step 822. In decision step 818, the VMUS 300 determines if a 1024 QAM channel is available, and if so, the process continues to step 820 where a 1024 QAM channel is selected. If instead, in decision step 818, there is no 1024 QAM channel available, the process continues instead to decision step 824.

In decision step 822, if the metric value is greater than or equal to a second threshold (such as 32 dBmV of SNR), the process continues to decision step 824. If the received metric value is less than the first threshold, the process continues to step 828, where a 64 QAM channel is selected by default. In decision step 824, the VMUS 300 determines if a 256 QAM channel is available, and if so, the process continues to step 826 where a 256 QAM channel is selected. If instead, in decision step 824 there is no 256 QAM channel available, the process continues to step 828, where a 64 QAM channel is selected by default.

In step 830, the VMUS sends a message to the remote device that identifies the channel selected by the VMUS 330 in decision steps 818, 826, or 828 for that channel. In step 832, the VMUS 300 stores the identification information, metric value and channel selected in storage unit 416. In step 732, the VMUS 300 organizes the stored data for each remote device and channel in a database. Finally, the VMUS 300, in decision step 836, determines if there is another feedback signal to be processed, and if so, the process repeats itself by going to decision step 816. Otherwise the process ends in step 840.

## 13

The processes in FIGS. 7 and 8 may be performed by hardware or software. If the process is performed by software, the software may reside in software memory located on the storage unit 416 or controller 414 in the VMUS 304. The software in software memory may include an ordered listing of executable instructions for implementing logical functions (i.e., "logic" that may be implemented either in digital form such as digital circuitry or source code or in analog form such as analog circuitry or an analog source such as an analog electrical, sound or video signal), may selectively be embodied in any computer-readable (or signal-bearing) medium for use by or in connection with an instruction execution system, apparatus, or device, such as a computer-based system, processor-containing system, or other system that may selectively fetch the instructions from the instruction execution system, apparatus, or device and execute the instructions. In the context of this document, a "computer-readable medium" and/or "signal-bearing medium" is any means that may contain, store, communicate, propagate, or transport the program for use by or in connection with the instruction execution system, apparatus, or device. The computer readable medium may selectively be, for example but not limited to, an electronic, magnetic, optical, electromagnetic, infrared, or semiconductor system, apparatus, device, or propagation medium. More specific examples, i.e., "a non-exhaustive list" of the computer-readable media, would include the following: an electrical connection (electronic) having one or more wires, a portable computer diskette (magnetic), a RAM (electronic), a read-only memory "ROM" (electronic), an erasable programmable read-only memory (EPROM or Flash memory) (electronic), an optical fiber (optical), and a portable compact disc read-only memory "CDROM" (optical). Note that the computer-readable medium may even be paper or another suitable medium upon which the program is printed, as the program can be electronically captured, via for instance, optical scanning of the paper or other medium, then compiled, interpreted or otherwise processed in a suitable manner if necessary, and then stored in a computer memory.

While various embodiments of the invention have been described, it will be apparent to those of ordinary skill in the art that many more embodiments and implementations are possible that are within the scope of this invention.

What is claimed is:

1. A remote device for use with a variable modulation unicast system, the remote device comprising:
  - a) a receiver that receives signals from the variable modulation unicast system directed to the remote device, the signals having a plurality of modulation techniques, at least the signal having the most efficient technique being broadcast;
  - b) a memory that stores information indicating the identity of the remote device;
  - c) a metric measurement unit, coupled to the receiver, for determining whether the receiver was capable of successfully demodulating at least one of the received signals and generating an indication as to which signals the receiver was able to demodulate;
  - d) a transmitter, coupled to the metric measurement unit and to the memory, the transmitter receiving from the metric measurement unit an indication of whether the receiver was capable of successfully demodulating at least one of the received signals and receiving from the memory, the information indicating the identity of the remote device, and the transmitter transmitting to the variable modulation unicast system:

## 14

- i) the information indicating the identity of the remote device; and
- ii) the indication as to which such signals the remote device is able to demodulate

wherein, if the receiver is able to receive information on the broadcast signal that uses the most efficient modulation technique, then receiving subsequently transmitted information on the broadcast signal, the subsequently transmitted information being modulated using the most efficient modulation technique and otherwise receiving subsequently transmitted information on a unicast signal on which a less efficient modulation technique is used to modulate the subsequently transmitted information to the remote device, and

wherein after the transmitter transmits an indication as to which such signals the remote device is capable of receiving, the receiver attempts to receive only signals transmitted to the remote device using the modulation technique used by the signals that the remote device is capable of receiving.

2. A remote device for use with a variable modulation unicast system, the remote device comprising:
  - a) a receiver that receives signals from the variable modulation unicast system directed to the remote device, the signals having a plurality of modulation techniques, at least the signal having the most efficient technique being broadcast;
  - b) a memory that stores information indicating the identity of the remote device;
  - c) a metric measurement unit, coupled to the receiver, for determining whether the receiver was capable of successfully demodulating at least one of the received signals and generating an indication as to which signals the receiver was able to demodulate;
  - d) a transmitter, coupled to the metric measurement unit and to the memory, the transmitter receiving from the metric measurement unit an indication of whether the receiver was capable of successfully demodulating at least one of the received signals and receiving from the memory, the information indicating the identity of the remote device, and the transmitter transmitting to the variable modulation unicast system:
    - i) the information indicating the identity of the remote device; and
    - ii) the indication as to which such signals the remote device is able to demodulate

wherein, if the receiver is able to receive information on the broadcast signal that uses the most efficient modulation technique, then receiving subsequently transmitted information on the broadcast signal, the subsequently transmitted information being modulated using the most efficient modulation technique and otherwise receiving subsequently transmitted information on a unicast signal on which a less efficient modulation technique is used to modulate the subsequently transmitted information to the remote device, and

wherein after the transmitter transmits an indication as to which signals the remote device is capable of receiving, the receiver attempts to receive only signals transmitted on a frequency on which signals are modulated using the same modulation technique used to modulate the signals the transmitter indicated that the remote device is capable of receiving.