

Blumotion soft closing door hinge

- Formed 18 ga. Stainless steel, 304,402 #4 finish, used for total cabinet conts.
- Stainless steel adjustable shelf and shelf pins
- Stainless steel toekick
- 7"x5/8"dia Stainless steel solid rod handle
- Blumotion Tandembox soft close drawer
- Blumotion soft close hinges

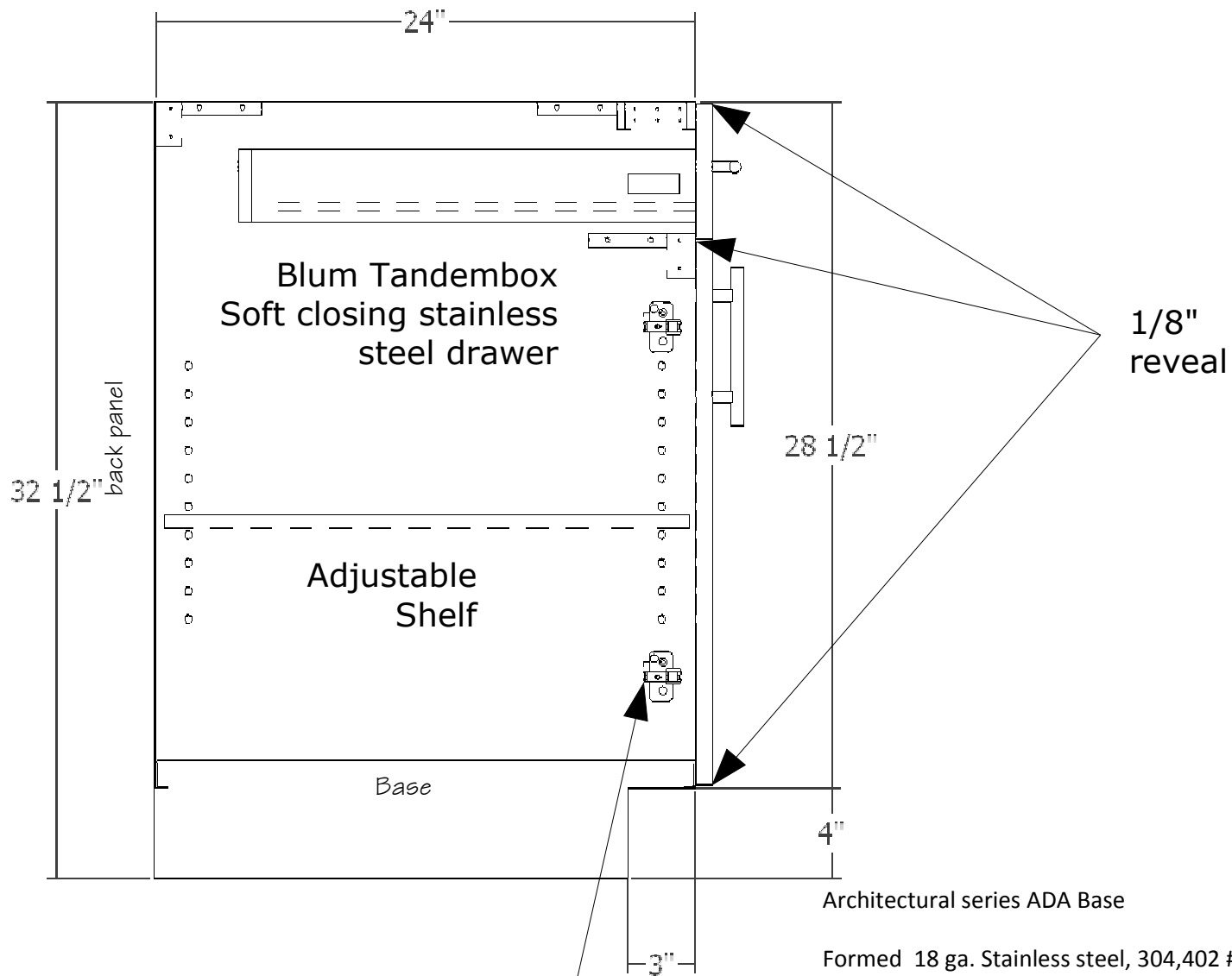
Stainless Steel Kitchens
 PO Box 877
 Mishawaka, IN 46546
 (574)272-2530 Fax(574)272-2533



Quote#	Date
Address:	Name
City:	Architectural series Standard Base Section
State:	Sheet

Approved

Not Approved



Architectural series ADA Base

- Formed 18 ga. Stainless steel, 304,402 #4 finish, used for total cabinet conts.
- Stainless steel adjustable shelf and shelf pins
- Stainless steel toe kick
- 7"x5/8" dia Stainless steel solid rod handle
- Blumotion Tandembox soft close drawer
- Blumotion soft close hinges

Blumotion soft closing door hinge

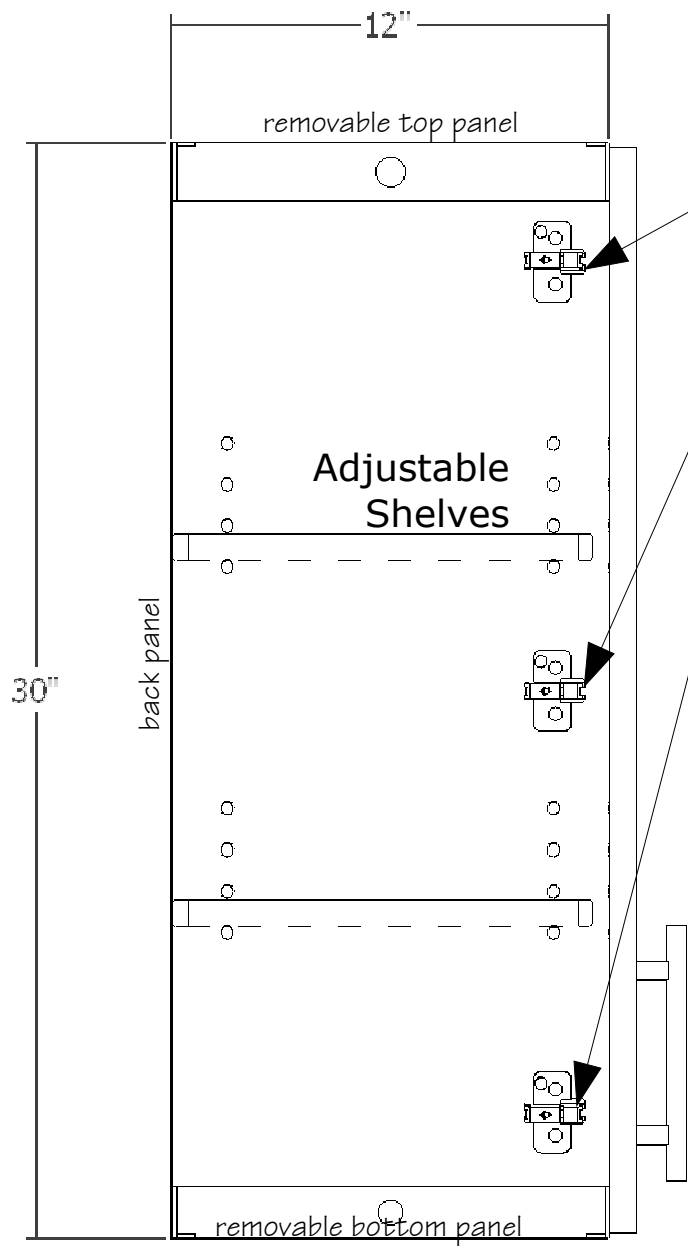
Stainless Steel Kitchens
PO Box 877
Mishawaka, IN 46546
(574)272-2530 Fax(574)272-2533



Quote#	Date
Address:	Name
City:	Architectural series
State:	ADA Base Section
	Sheet

Approved

Not Approved



Blumotion soft close hinges

Adjustable Shelves

Architectural series upper cabinet

Formed 18 ga. Stainless steel,304,402, #4 finish,total cabinet construction
 Stainless steel adjustable shelf and shelf pins
 7"x 5/8"dia. Stainless steel solid rod handle
 Blumotion soft close hinges

bottom panel available with or without lights

Stainless Steel Kitchens
 PO Box 877
 Mishawaka, IN 46546
 (574)272-2530 Fax(574)272-2533



Quote#	Date
Address:	Name Architectural series Standard Upper Section
City:	
State:	Sheet

Approved

Not Approved