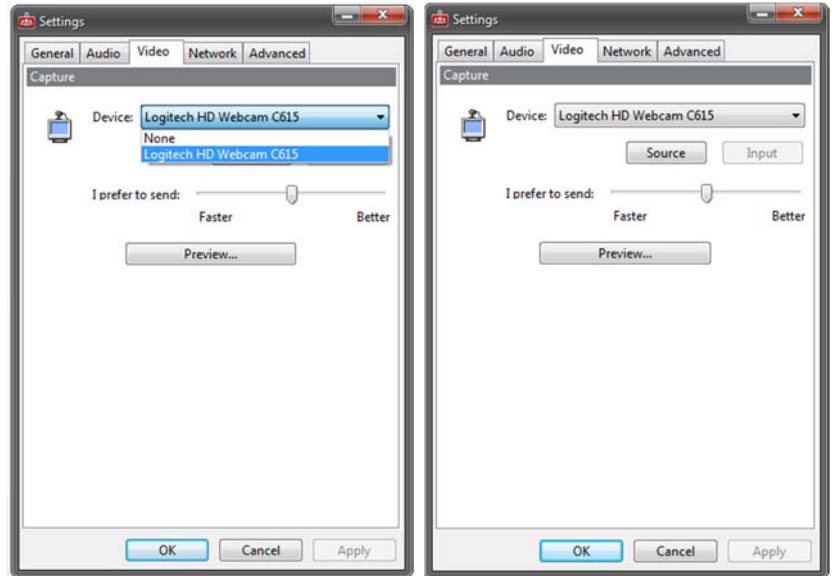


Client Settings - Video Tab

1. Click the Video tab
2. Use the Device pull-down menu to select your preferred video device
3. "I Prefer to send" will determine the speed and quality of the video being sent
 - You will click and drag the slider left if you prefer to send Fast video and are not as concerned about quality
 - You will click and drag the slider to the right if you prefer to send higher quality video
4. Click **<Apply>**
5. Click **<Preview>** to test your video device output



6. You will see your video output



7. Click on the **<Source>** button to control the webcam or adjust the webcam settings

Proceed to Client Settings – Network Tab

