

FIBERGLASS STAMFORD BAFFLES

Glass-Steel, Inc. fabricates Stamford Baffles (also known as Density Current Baffles or Up-flow Baffles) for use in Clarifiers. Stamford type baffles have been used for over (30) years in the water/wastewater industry to divert currents created by the clarifier rake arm as it turns and rakes sludge toward the discharge sump. Stamford Baffles have been made of concrete, galvanized steel, aluminum, and stainless steel. Our pultruded fiberglass Stamford baffles are lower in cost and easier to install than any of the above.

Glass-Steel, Inc. furnishes the Stamford baffles with an integral standoff brace every 8-10 feet. Because our Stamford baffles are fiberglass pultrusions they have superior corrosion resistance and are stronger than most other fiberglass Stamford baffle systems.

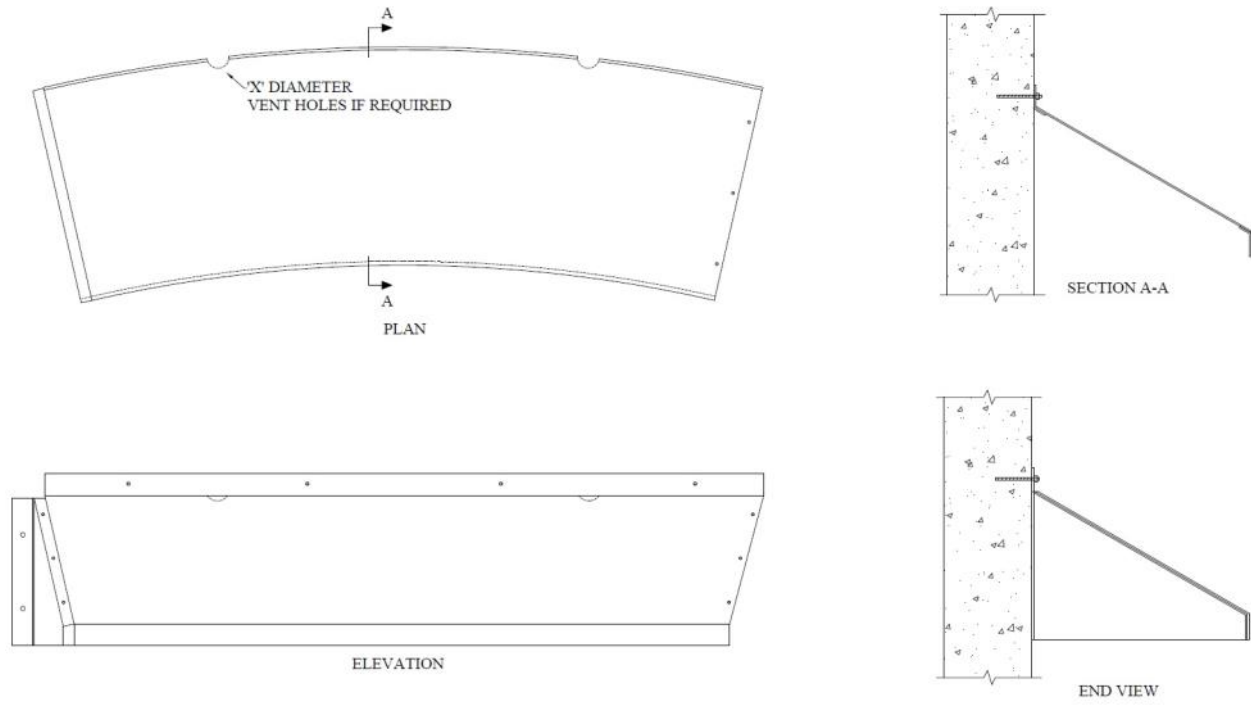
Typical properties are as follows:

Tensile Strength	Typical Hand Lay-up 14,000psi	Glass-Steel, Inc. 30,000psi
Flexural Strength	25,000psi	30,000psi
Flexural Modulus	1.0×10^6 psi	2.5×10^6 psi (full section)
Barcol Hardness	40	40

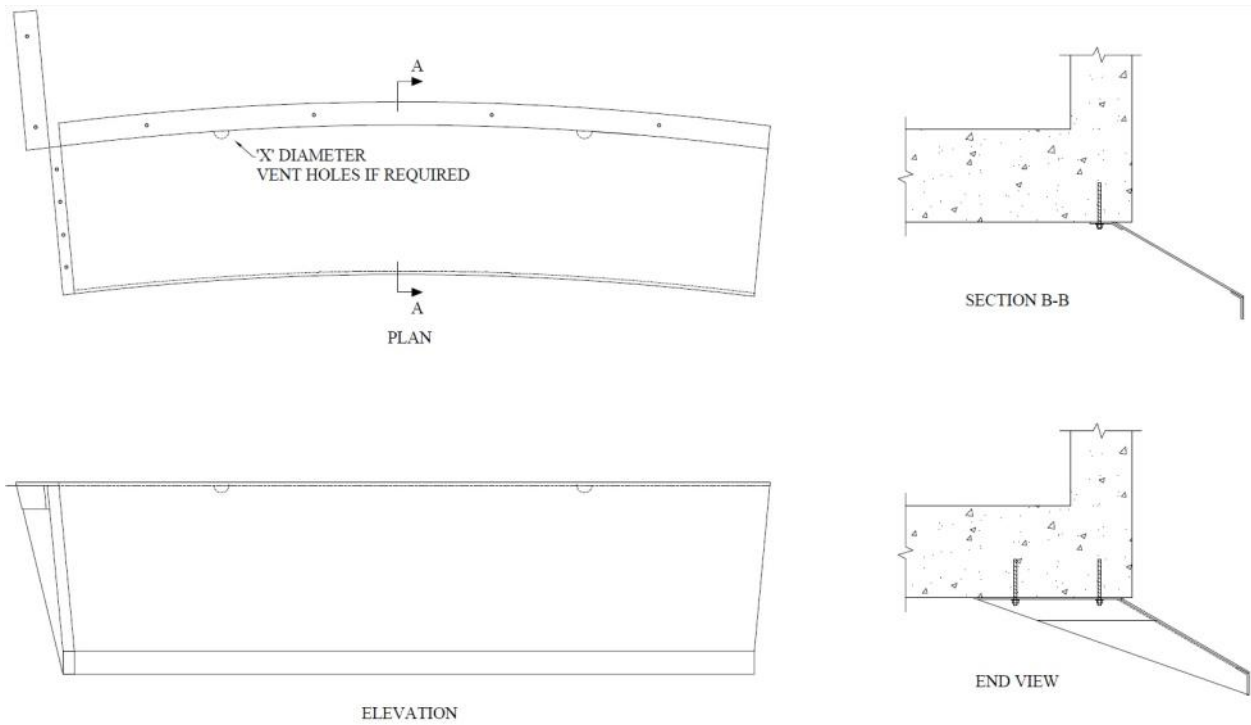
Stamford material thickness is 3/16. Two styles are indicated in the following drawings. Other thickness, styles, and resin systems are available. ■



Pultruded Stamford Baffles installed in California 1991



Wall Mount Stamford Baffles



Trough Mounted Stamford Baffles



Stamford Baffle at Moorehead, KY with 1'6" long baffle brackets with right angle upper bracket for algae sweep.



Closer view of above. All components are pultruded fiberglass shapes with superior strength, corrosion resistance, and UV resistance to molded or hand laid-up materials.



Glass·Steel, Inc.
PO Box 7155
The Woodlands, TX 77387-7155
18468 FM 1314
Conroe, TX 77302
(281) 572-2211 office
(281) 572-2212 fax
www.GlassSteelinc.com