

Richardson Homes, The AP Hill



Elevation is for illustrative purposes only, RH



“The AP Hill”

Model	“The AP Hill”	
AREA CALCULATIONS	FINISHED	UNFINISHED
BASEMENT		1,586'
FIRST FLOOR	1,586'	
SECOND FLOOR	1,302'	
BONUS ROOM		
GARAGE		572'
COVERD PORCHES		314'
DECKS		
PLAN TOTALS	2,888'	2,472'
Total Construction of Home:	5,360 SQ FT	
Overall Width: 66'-0"	Overall Depth: 52'-0"	

Architectural renderings are similarities / conceptions only.

Some floor plans may vary with elevations. Elevations & floor plans may reflect optional features.

Richardson Homes reserves the right to make changes and or substitute products, dimensions, specifications, architectural detail and design without notice.



"The AP Hill"

1st Floor Level: 1,586 SF, heated

Bedrooms: 4

Bathrooms: 2.5

Master Suite: 2nd floor level

Laundry: 1st floor level

Garage: 2- Car spaces

Basement: Full / Finishable Living Space



Main Level Floor Plan

Architectural renderings are similarities / conceptions only.

Some floor plans may vary with elevations. Elevations & floor plans may reflect optional feature.

Richardson Homes reserves the right to make changes and or substitute products, dimensions, specifications, architectural detail and design without notice.



"The AP Hill"

2nd Floor Level: 1,302 SF, heated

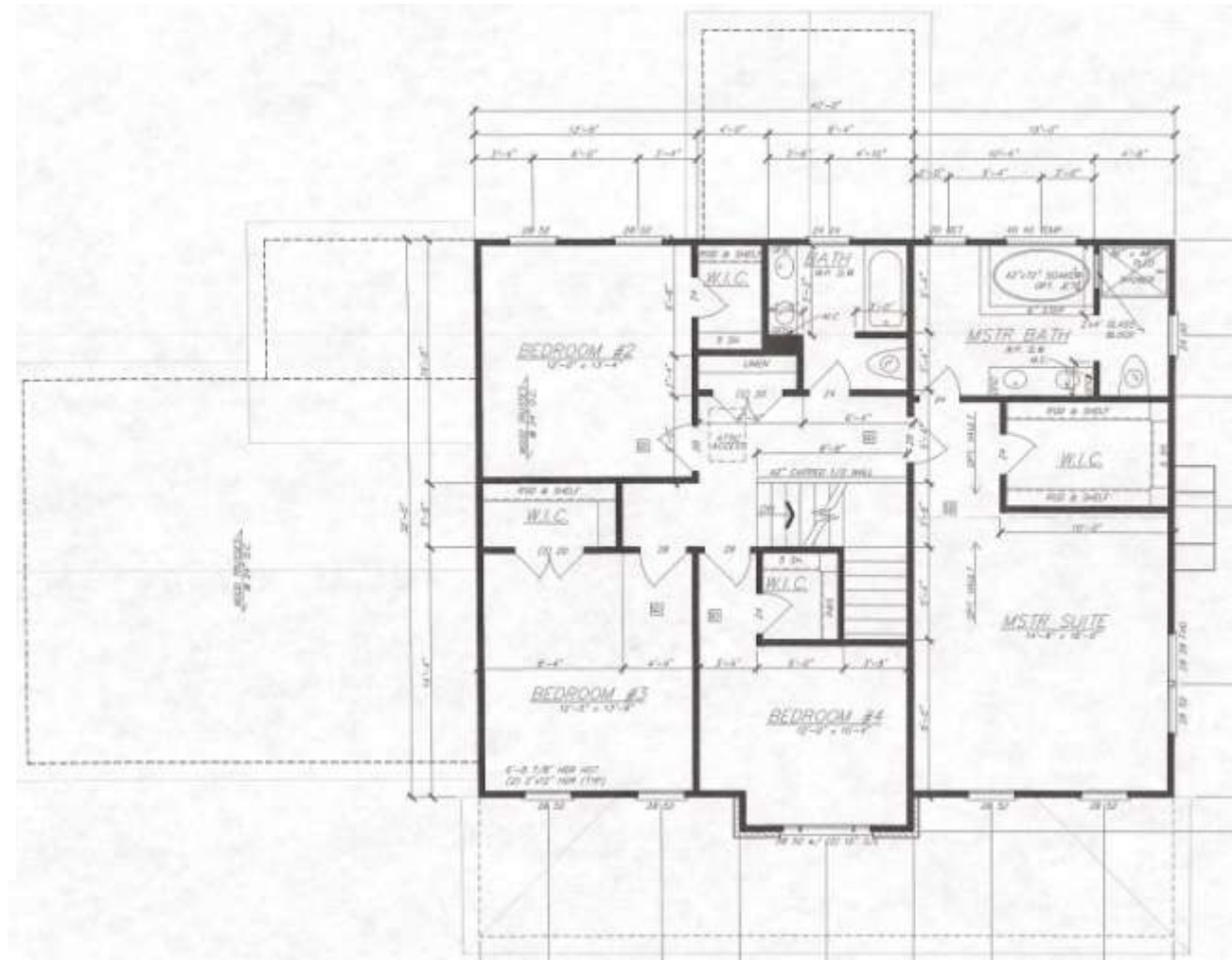
Bedrooms: 4

Bathrooms: 2.5

Laundry: 1st floor level

Garage: 2- Car spaces

Basement: Full / Finishable Living Space



Upper Level Floor Plan

Architectural renderings are similarities / conceptions only.

Some floor plans may vary with elevations. Elevations & floor plans may reflect optional features.

Richardson Homes reserves the right to make changes and or substitute products, dimensions, specifications, architectural detail and design without notice.