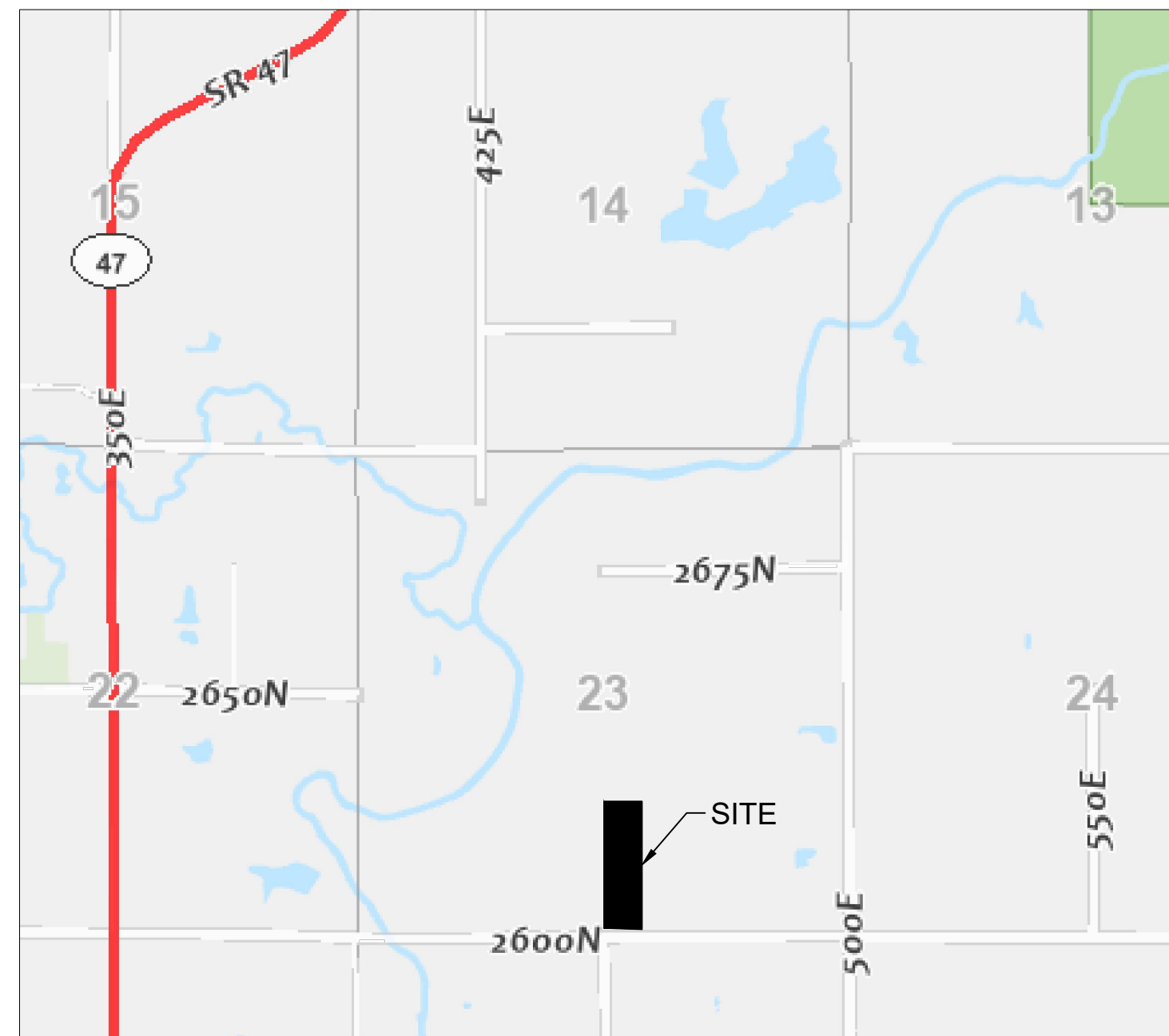
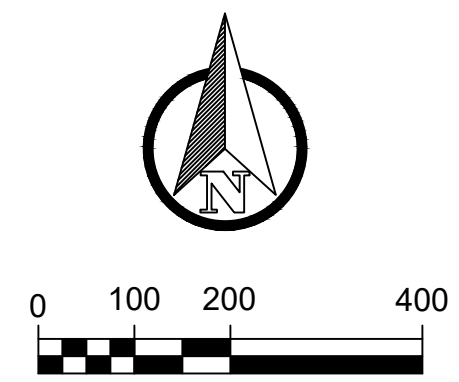
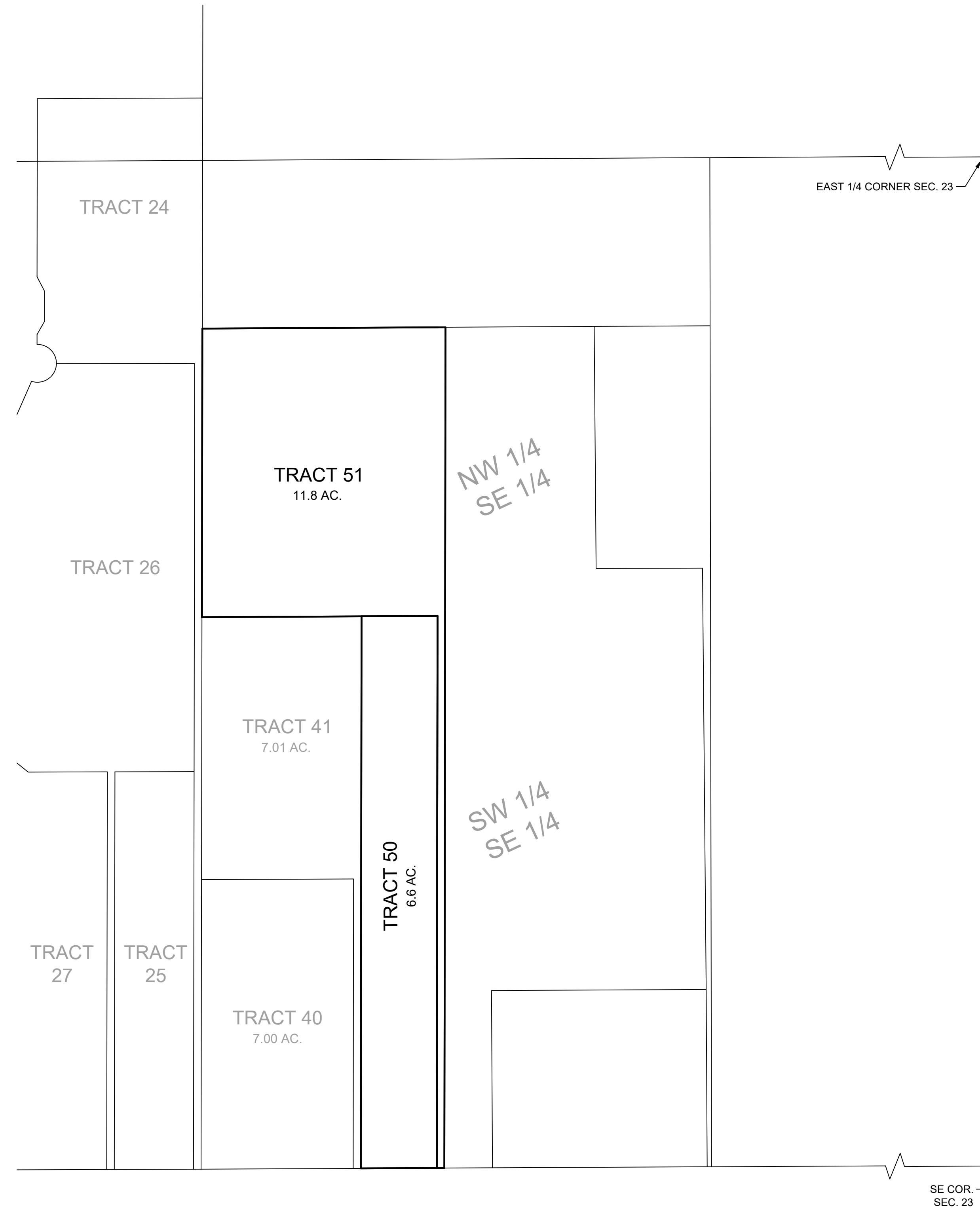


EXHIBIT
 PART OF SECTION 23, TOWNSHIP 21 NORTH,
 RANGE 7 EAST, OF THE THIRD PRINCIPAL MERIDIAN,
 CHAMPAIGN COUNTY, ILLINOIS




LOCATION MAP
NOT TO SCALE



LEGEND

- BOUNDARY OF TRACT SURVEYED
- EXISTING LOT LINE

File Name: S:\000 Projects\194 Tabling Development\194190004 Hidden River\Hidden River ZCAD\194190004_HR2_EXHIBIT.dwg

REV. #	REV. DATE:	REVISION MADE:	 PRECISION ENGINEERING GROUP, INC. P.O. BOX 784 CHAMPAIGN, IL 61824-0784 PHONE: 217.607.9489 CIVIL ENGINEERING - LAND SURVEYING ILLINOIS DESIGN FIRM REGISTRATION NO. 184007585
DATE:	03/14/21	SCALE: AS SHOWN	
FIELD BOOK:	19/73	DRAWN BY: MAM	
CHECKED BY:	SJP		
EXHIBIT			
HIDDEN RIVER PHASE 2 PART OF SEC. 23, T.21 N., R. 7 E., 3rd P.M. CHAMPAIGN COUNTY, ILLINOIS			FILE # 19419004 SHEET 1 OF 1