



SOME OPTIONS MAY BE SHOWN



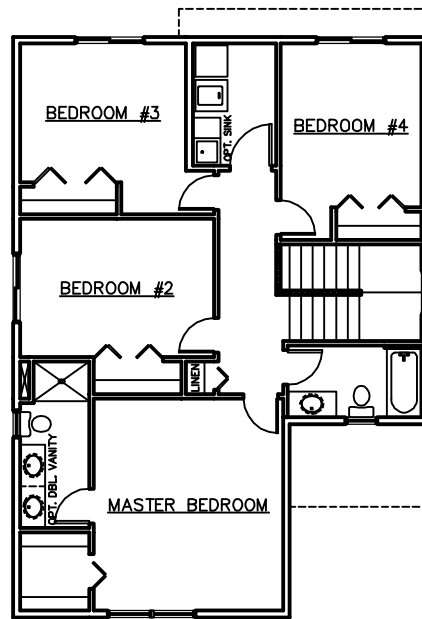
PHOTOS OF PREVIOUS HOME



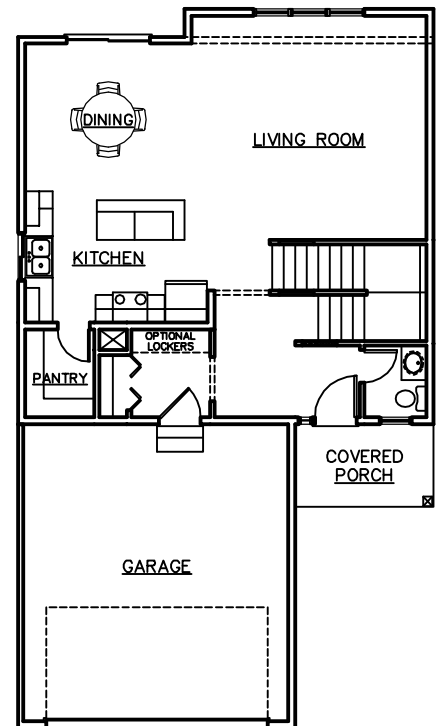
- * 4-5 BEDROOMS, 2-1/2-3-1/2 BATHS
- * 1,996 - 2,420 SQUARE FEET
- * OPEN FLOOR PLAN
- * WALK-IN KITCHEN PANTRY
- * 2ND FLOOR LAUNDRY
- * WALK-IN-CLOSET
- * COVERED FRONT PORCH

ROOM SIZES

MASTER BEDROOM	13'-8" X 15'-4"
BEDROOM #2	14' X 10'-4"
BEDROOM #3	12'-10" X 12'
BEDROOM #4	11'-2" X 13'-4"
LIVING ROOM	17' X 16'
DINING	12' X 11'
KITCHEN	12'-8" X 9'-6"



UPPER LEVEL



MAIN LEVEL



3475 Vermillion Street, Suite 101 ~ Hastings, MN 55033 ~ 651.437.3700 ~ www.gregjhomes.com

Plans and specifications are subject to change without notice. Copyright Greg J Homes of Hastings Inc. 2016